

spegcs.org

2024-2025 Comprehensive Media Guide



Gulf Coast Section

Contents

A photograph of an oil pumpjack (jack-o'-lantern) in an oil field at sunset. The sky is filled with orange and yellow clouds, and the pumpjack is silhouetted against the bright light. The ground is covered in a layer of snow or ice, and there are other pumpjacks visible in the distance.

Page 03 About
SPE-GCS

Page 04 e-Newsletter
Advertising

Page 05 Website
Advertising

Page 06 Advertising
Contacts

About SPE-GCS

Study Groups

- Business Development
- Completions & Production
- Computational Fluid Dynamics
- Data Analytics
- Drilling
- General Meeting
- Northside
- Research & Development
- Reservoir
- Special Interest Group
- Westside

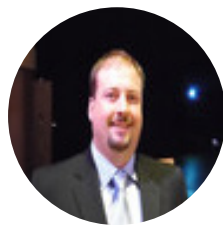
Committees

- Communications
- Community Services
- Continuing Education
- Diversity & Inclusion
- Education
- Innovate
- Membership
- Members in Transition

2024-2025 Programs



Priyavrat Shukla
Programs Chair

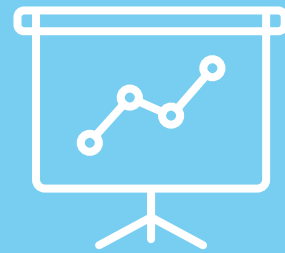


Chad Senters
Programs Vice Chair

BY THE NUMBERS



200+ Active
Volunteers



90+ Technical &
Social Events

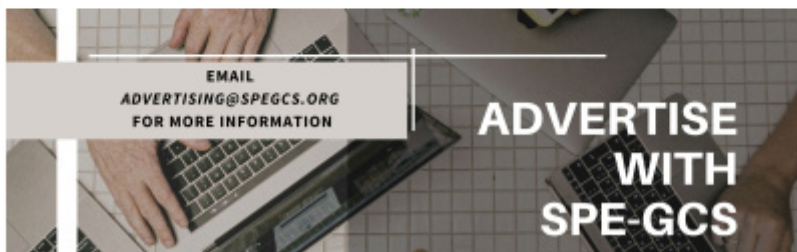
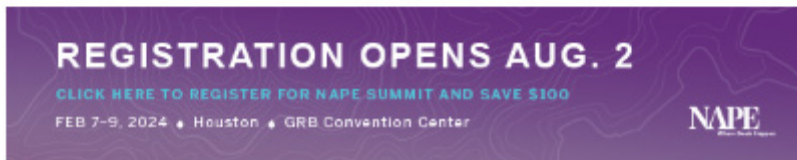


+5,300 Attendees

More Information
www.spegcs.org

Contact Us
advertising@spegcs.org

ADVERTISEMENTS



**TOP
PLACEMENT**

**MIDDLE
PLACEMENT**

**BOTTOM
PLACEMENT**

e-Newsletter Advertising

Reach and Frequency: The Society of Petroleum Engineers Gulf Coast Section distributes a monthly e-Newsletter four times each month to over 9,800 recipients at the beginning of each week.

Each weekly e-Newsletter, on average, has an open rate of 47% and a 3.5% click through rate on each email distributed.

All of our sponsorship spots have ideal placement at the top of each e-Newsletter. Each monthly sponsorship purchase includes 4 impressions each month.

Size Specifications	Ad URLs	Pricing
<ul style="list-style-type: none"> 600 x 118 pixels at 72 dpi. No gifs JPG or PNG 	<ul style="list-style-type: none"> Provide a unique URL using your metrics program so that you can track your ad 	<ul style="list-style-type: none"> Top Placement \$750 Middle Placement \$500 Bottom Placement \$400

We offer a 10% discount on a 6 month ad commitment and a 15% discount on a 12 month ad commitment. We also offer a discount on bundling ads with e-newsletter and homepage ads.

Homepage Advertisements

The Society of Petroleum Engineers Gulf Coast Section online website is a resourceful tool to Gulf Coast Engineers. Members visit the site to sign up for committee and study group events, find members' information, search industry resources, and much more!

Reach and Frequency: The website averages over 25,000 visitors to the homepage each month.

Size Specifications

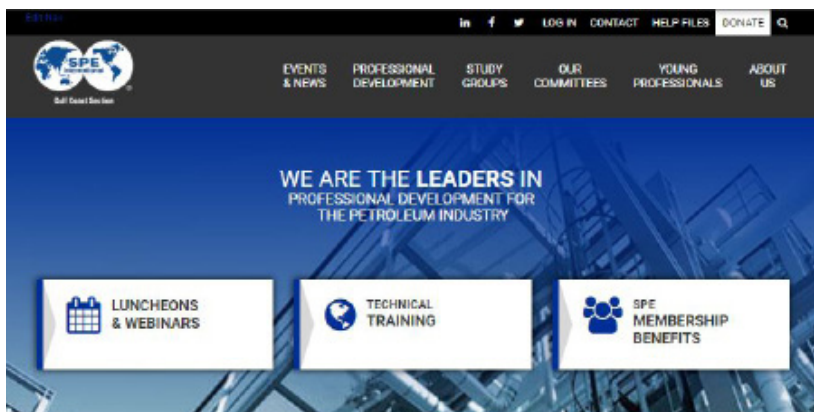
- 356 x 187 pixels at 72 dpi
- No gifs
- JPG or PNG
- Maximum File Size: 20K

Ad URLs

- Provide a unique URL using your metrics program so that you can track your ad

Pricing

- 12 Months - \$1,600
- 6 Months - \$800
- 3 Months - \$400



UPCOMING EVENTS

SEP 05	CONTINUING EDUCATION **COURSE RESCHEDULED** SPE GCS Core SD Learning Tutorial: Deepwater fluids SEP 05 9 A.M. NEWARK TECHNOLOGY CENTER	SEP 05	RESEARCH & DEVELOPMENT Unconventional Enhanced Oil Recovery Well Simulation with Nano Particle Technology. SEP 05 11:30 A.M. SOCIETY OF PETROLEUM ENGINEERS-HOUSTON OFFICE	SEP 05	PERMIAN BASIN Partner: East Hill - Parent Child Well Interaction SEP 05 11:30 A.M. MORRIS CONFERENCE CENTERS - HOUSTON/VESTCHASE
SEP 06	CONTINUING EDUCATION SPE GCS: Continuing Education Tutorial: Gas Lift SEP 06 9:30 A.M. FLOWDO PRODUCTION SOLUTIONS	SEP 06	MEMBERS IN TRANSITION Members In Transition Seminar #38/ Joint meeting with SPE Petrotech Study Group SEP 06 10 A.M. SPE GCS OFFICE	SEP 10	COMPLETIONS & PRODUCTION Completions and Production Symposium: Challenges and Perspectives SEP 10 7:00 A.M. CORE LABORATORIES INC

[VIEW ALL EVENTS >](#)

YOUR AD HERE



6 HOMEPAGE AD SPOTS

We offer a 10% discount on a 6 month ad commitment and a 15% discount on a 12 month ad commitment. We also offer a discount on bundling ads with e-newsletter and homepage ads.

Contact Us



SALES CONTACT

Lindsey Newsome

advertising@spegcs.org

713.494.2582

WEBSITE CONTACT

Lindsey Newsome

advertising@spegcs.org

713.494.2582



PAYMENT CONTACT

Lindsay Rochner

spe-gcs@spe.org

713.457.6821

2024-2025 MEDIA GUIDE



Gulf Coast Section

2042-2025 SPE-GCS Media Guide

©2024 Society of Petroleum Engineers Gulf Coast Section