



Gulf Coast Section

MARCH
2013

CONNECT

SPE GULF COAST SECTION NEWSLETTER



Well Delivery Management

Drill More Wells in Less Time

DRILLING P. 17

**SPE DIGITAL ENERGY CONFERENCE
& EXHIBITION 2013**

March 5th-7th

P. 9

**R&D LEADERSHIP PERSPECTIVES
ON RUNNING A R&D ORGANIZATION**

RESEARCH & DEVELOPMENT P. 23

**INTEGRATION OF SHALE GAS
PRODUCTION DATA AND
MICROSEISMIC FOR FRACTURE
AND RESERVOIR PROPERTIES
USING A FAST MARCHING METHOD**

GENERAL MEETING P. 13

**TWO EMERGING WATER
QUALITY ISSUES IN THE
PERMIAN BASIN**

WESTSIDE & PERMIAN BASIN P. 21/27

SPEGCS.ORG



CHAIRMAN'S CORNER

STEVE BAUMGARTNER
2012-2013 SPE-GCS Chair

The SPE Gulf Coast Section leadership is guided by a Strategic Plan, designed to be a roadmap for the future. It guides policies, programs and decision making for the section in long term tactical planning, annual budgeting and day-to-day operations. The Strategic Plan reaffirms the mission of the Gulf Coast Section, as defined in our bylaws, and directs the section leadership to focus its efforts on a number of areas. Our current Strategic Plan was prepared and approved by the SPE-GCS Board of Directors in 2005. Mike Strathman (Vice Chair) and his 2013 Strategic Plan committee have begun preparation of a new Strategic Plan for the Gulf Coast Section. The 2013 Strategic Plan committee members are Steve Baumgartner (Chair), Hiep Vu (Past Chair), Lucy King (Secretary), Rob Bruant (Treasurer), David Tumino (Vice Treasurer) and Jeanne Perdue (Membership). A draft of the 2013 Strategic Plan will be presented and discussed at the March Board of Directors meeting.

The 2013 SPE-GCS Strategic Plan will address four areas:

- Professional Development for Members
- Investment in Community
- Membership Support
- Administrative and Financial Governance

The SPE-GCS Strategic Plan calls for a Long Range Plan (LRP) outlining specific action items and initiatives that are shaped by the Strategic Plan. The LRP currently in place was approved in 2009 for the years 2009-2012. Many of the initiatives of the 2009 LRP have been accomplished or are in progress. The Gulf Coast Section is due for a new LRP. Mike Strathman and his 2013 Strategic Plan Committee will form the 2013 Long Range Planning committee to accomplish this important work. The 2013 LRP committee will be tasked with reviewing implementation of the initiatives outlined in the 2009 LRP and making recommendations for initiatives to be included in the 2013-2016 Plan. The new LRP will be guided by and aligned with the 2013 Strategic Plan. It is important that the new LRP incorporates changes that the SPE-GCS membership wants, while not changing established and well-appreciated initiatives of the section. To that end, we ask each of you to communicate with the members of the LRP Committee to voice your opinions and suggestions on new initiatives to be pursued over the next three years, as well as which established initiatives should continue to be supported by our section.

In September, we announced that we were giving the SPE-GCS website (<http://www.spegcs.org/>) a facelift. Valerie Martone (Communications) accepted the challenge of managing this project. We thank her for all the time and effort she contributed to successfully completing the project.

The simple, organized format of our new site (which went live in January) makes it easy to navigate to what you are interested in, whether it is tracking down a presentation you heard, learning how to advertise your company with us or even finding a photo of you and your colleagues at a recent SPE-GCS event. One of the improvements in the new site is the integration with the SPE website as well as social networking sites. We encourage you to sign up for the e-newsletter, become a member or connect with other members on our various social media outlets. Please visit the new site and let us know what you think.

Andrea Hersey was recently announced as the prize-winner for the SPE Gulf Coast North America Region in the 2012 Build the World of SPE membership recruitment contest. She recruited more SPE members during 2012 than anyone else in the region. Congratulations to Andrea on this significant achievement.

Register now for the 40th Annual SPE Gulf Coast Section Golf Tournament. This Gulf Coast Section event contributes significantly to our Scholarship Fund, which helps college and university students who will enter our industry. The scholarships are extremely important to help address the unprecedented demand in the energy industry for scientists, engineers and technicians.

We would like to know how we can serve your interests with programs and activities organized by the SPE Gulf Coast Section study groups and committees. Please send us your comments and suggestions. My email address is sbaumgartner@marathonoil.com.

FEATURES

March 2013

STUDY GROUPS

RESEARCH & DEVELOPMENT
03/07/13

*R&D Leadership Perspectives on Running
an R&D Organization*

P. 23

NORTHSIDE
03/12/13

*Shale Resource Assessment & Development –
Full Life Cycle Integrated Approach*

P. 19

GENERAL MEETING
03/14/13

*The Emergence of Liquefied Natural Gas as
a Transportation Fuel in North America*

P. 11

DIGITAL ENERGY
03/20/13

*Upstream Unification-Bringing
Together Disciplines Through Better
Software Integration*

P. 15

DRILLING
03/20/13

*Well Delivery Management- Drill
More Wells in Less Time*

P. 17

PERMIAN BASIN/ WESTSIDE
03/20/13

*Two Emerging Water Quality Issues in
the Permian Basin*

P. 21

RESERVOIR
03/25/13

*Integration of Shale Gas Production
Data and Microseismic for Fracture
and Reservoir Properties*

P. 25

COMPLETIONS & PRODUCTION
03/27/13

*Hydraulic Fracturing of Horizontal Wells—
Realizing the Paradigm Shift That Has
Been 30 Years in Development*

P. 13



P. 30

13TH ANNUAL SPORTING CLAYS
TOURNAMENT

Friday, June 7, 2013



P. 33

2013 SPE-GCS GOLF TOURNAMENT
Monday, April 15th, 2013

COMMITTEES

YOUNG PROFESSIONALS
03/14/13

*A Recipe for Shameless, Constructive
Self-Promotion*

YP Happy Hour

AUXILIARY
March 2013 Activities

P. 29

MORE

2013 EAST TEXAS OILFIELD EXPO

P. 8

2013 SPE DIGITAL ENERGY
CONFERENCE & EXHIBITION

P. 9

IN EVERY ISSUE

THEN & NOW

by Buddy Woodroof

P. 4

SPE-GCS MEMBERSHIP REPORT
January 2013

VOLUNTEER SPOTLIGHT
Amy Timmons

P. 7

SPE GULF COAST SECTION
DIRECTORY

Your guide to your organization leaders

P. 34

RICE/UH SPE STUDENT CHAPTER
MEMBER RECEIVES AWARD

P. 28

THURS
March 14

7:30 AM TO 10:30 AM

SPE-GCS BOARD OF DIRECTORS MEETING

LOCATION

*SPE Houston Office
10777 Westheimer Rd.
Suite 1075
Houston, TX 77042*

EVENT CONTACT

*Sharon Harris
713-457-6821 EXT. 821
713-779-4216 FAX
sharris@spe.org*

THEN & NOW

Column by
BUDDY WOODROOF

March 1998

Pemex continues to drop reserve estimates, this time for their southern region, dropping the total from 11.862 billion boe (the last year) to 11.056 billion boe. (There goes the peso again!)

Shell and Unocal resolve the lawsuit filed by Shell regarding protection of proprietary E&P data that could be potentially transferred to Unocal by a number of former Shell employees hired by Unocal.

As the turn of the century approaches, an international research firm reports the results of an operator poll ranking foreign countries in the following order as to their favorable status for new E&P ventures: U.K., Australia, Brazil, Kazakhstan, Indonesia, Algeria, Venezuela, Argentina, Egypt, and Azerbaijan.

The U.A.E. bans all oil-related barge traffic in their territorial waters and ports after a barge sinks trying to smuggle Iraqi oil through the Persian Gulf. The resulting spill forced the closure of desalination plants, which supply drinking water to the region.

Light, sweet crude oil - \$15.23/bbl; Natural gas - \$2.21/MMbtu; U.S. active rig count - 957

March 2002

ExxonMobil reports plans to enter the Taiwanese retail market, which was just recently opened to foreign competitors. Until they secure a foothold in the market, they plan to buy products from state-run Chinese Petroleum Corp. for resale. (Interesting marketing strategy!)

Gaz de France signs a contract with a French shipbuilder to construct the world's first diesel electric LNG carrier. The vessel will be the first of its kind to use diesel-electric propulsion.

The Sakhalin I Consortium plans to build an advanced, special-purpose rig to drill extended-reach wells to offshore targets from a land-based site on Sakhalin Island, Russia.

Forest Oil and Anschutz International will soon be selling gas from the Orange basin offshore South Africa. The natural gas will ultimately be used to generate electric power in Cape Town.

Light sweet crude oil - \$23.26/bbl;
Natural gas - \$2.62/MMbtu; U.S. active rig count - 769

March 2012

El Paso reports plans to sell its exploration and production business, EP Energy Corp., for \$7.15 billion to affiliates of Apollo Global Management LLC and Riverstone Holdings LLC.

The USGS issues the first shale oil and gas estimates for Alaska's North Slope at 2 billion bbl of oil and 80 tcf of gas which are technically recoverable.

A European Union technical committee hands Alberta oil sands' producers a small victory by declining to declare fuels made from bitumen to be greater emitters of greenhouse gases than those from other types of crude oil.

The Sabine Pass LNG export project takes a step toward a final investment decision by entering an exclusive agreement for financing worth \$2 billion.

Light, sweet crude oil - \$104.20/bbl;
Natural gas - \$2.57/MMbtu; U.S. active rig - 1,975

THE REST OF THE YARN

This month we continue our extended look at the life and times of oil magnate John D. Rockefeller.

After a long, tense day at the office in downtown Cleveland, Rockefeller would go home to Euclid Avenue, read the evening newspaper and enjoy his family. But he didn't drink. In keeping with his firm religious beliefs, he was a strict teetotaler.

It was with his children that Rockefeller really let down his guard. He balanced fine china on his nose to amuse them. He taught them to skate and swim and ride bicycles. On moonlit nights, he led family bike journeys through the woods, attaching a white handkerchief to his back so the children could follow him easily.

John and Cettie sheltered their children from the family's growing

wealth, paying them tiny allowances, encouraging them to earn spending money by sharpening pencils and doing other household chores and teaching them the importance of duty to one's fellowman, good sense and, above all, religion.

Fortunately for Rockefeller, the Baptist doctrine did not discourage the pursuit of financial gain. The faith's roots were Puritanism and the Puritans saw the ability to earn and save as virtues. Rockefeller, writes one biographer, had a "sense that he was one of God's soldiers and religion made him great." Without religion, without the belief that he was serving God as he grew richer, Rockefeller might not have been such an exuberant capitalist. "I believe the power to make money is a gift from God," he cheerfully declared, "to be developed and used to the best of our ability for the good of mankind."

Next month, his business philosophy begins to take shape and along comes Standard Oil.

Then & Now March

QUIZ

In what year was the first structural map of an oilfield published and who is credited with its preparation?

Answers to Last Month's Quiz

The component of natural gas that flows through a hole faster, conducts heat better and transmits sound at a higher velocity than any other gas except for hydrogen is helium.

Congratulations to Last Month's Winner

MARK GLASER WITH WEATHERFORD

If you would like to participate in this month's quiz, e-mail your answer to contest@spe.org by noon, March 15. The winner, who will be chosen randomly from all correct answers, will receive a \$50 gift card to a nice restaurant.

HiWAY

FLOW-CHANNEL HYDRAULIC FRACTURING SERVICE



Mark of Schlumberger © 2013 Schlumberger 123456789

Increase Production While Saving Water, Proppant, and Time.

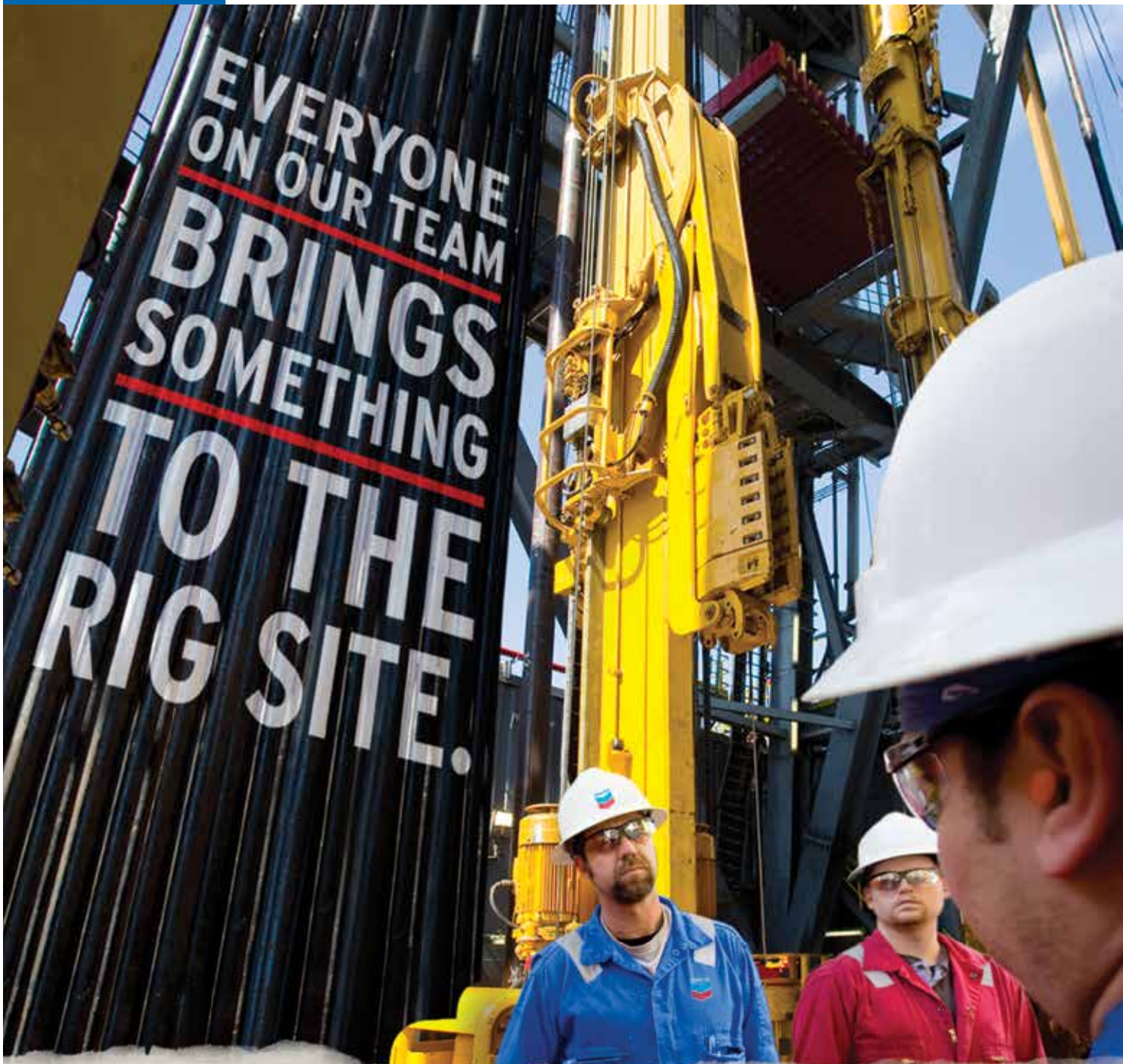
HiWAY* flow-channel hydraulic fracturing creates infinitely conductive pathways within the proppant pack, enhancing productivity and operational efficiency. On average, HiWAY jobs increase production 20%, use 40% less water, and consume 60% less proppant.

To date, HiWAY technology has been used in more than 10,000 stages. It has helped

- conserve over 350 million gallons of water
- save 1 billion pounds of proppant
- prevent more than 400 screenouts
- eliminate over 55,000 road journeys.

slb.com/HiWAY

Schlumberger



At Chevron, you'll join a team with the technology to take on big challenges, the integrity to do it responsibly, and the drive to keep the world moving forward. Are you up to the job?

We're Hiring Experienced Drilling & Completions Professionals

Requisition No:	Position:
032225279	Completions Engineering Advisor - Shale
006427470	Deepwater Drilling Engineer
032224758	Well Control Instructor

JOIN THE CHALLENGE.



Human Energy®

To learn more about these positions and to apply visit chevron.com/careers

An equal opportunity employer that values diversity and fosters a culture of inclusion. CHEVRON, the CHEVRON Hallmark and HUMAN ENERGY are registered trademarks of Chevron Intellectual Property LLC. © 2013 Chevron U.S.A. Inc. All rights reserved.

SPE-GCS MEMBERSHIP REPORT

January 2013

JANUARY 2013

Total: 10,899

YP: 1,879

NOVEMBER 2012

Total: 15,292

YP: 3,198

	JANUARY		NOVEMBER	
<i>SPE-GCS Members</i>	<i>Total</i>	<i>YP</i>	<i>Total</i>	<i>YP</i>
<i>New Members</i>	138	56	160	75
<i>Transferred to Section</i>	94	N/A	222	N/A
<i>Transferred out of Section</i>	166	N/A	120	N/A
<i>Unpaid</i>	4,853	1,379	1,669	625
<i>Student Members</i>	<i>Paid</i>	<i>Unpaid</i>	<i>Paid</i>	<i>Unpaid</i>
<i>Texas A&M</i>	278	383	791	136
<i>UH/Rice</i>	98	142	267	58
<i>HCC</i>	19	21	44	15
<i>Total</i>	395	546	1,102	209
<i>Total Paid/Unpaid</i>	11,294	5,399	16,394	1,878
<i>% Paid</i>	67.7%		89.7%	



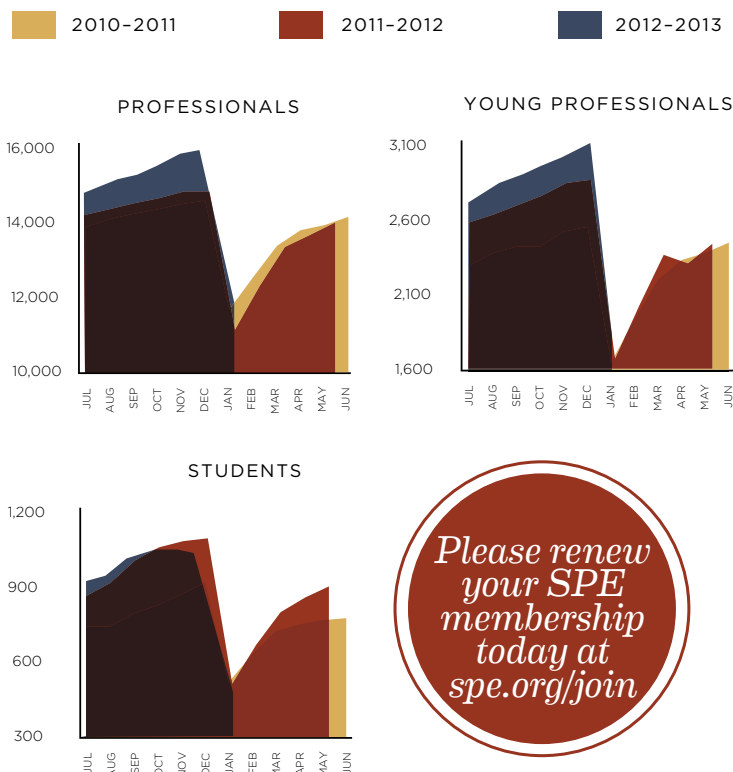
VOLUNTEER SPOTLIGHT

Amy Timmons

This month the Gulf Coast Section wishes to recognize the volunteer efforts of Amy Timmons, who serves not only as the Treasurer and Web Communications Chair for the Permian Basin Study Group, but also as Web Communications/Publicity Chair for the Drilling Study Group.

Late last October, the Texas Railroad Commissioner, who was scheduled to present at the Permian Basin Study Group meeting on November 13, had to reschedule his talk for the spring. Amy took it upon herself to scramble and find someone to fill that slot on short notice. She ended up getting T. Scott Campbell, Business Development Manager for Production Systems at Weatherford, to speak about deliquification at that study group meeting.

Amy is currently a reservoir stimulation sales specialist for Weatherford, where she designs frac jobs and prepares pricing proposals. Prior to that, she was a marketing communications specialist at BJ Services, working her way up from senior secretary. She earned her degree in Business Management from Le Tourneau University in 2007.



Please renew
your SPE
membership
today at
spe.org/join

Andrea Hersey Wins Recruiting Contest – Again

Andrea Hersey, past chair of the Young Professionals Committee, received a letter of commendation from SPE President Egbert Imomoh, recognizing her as a winner in SPE's 2012 Build the World of SPE Membership Recruitment Contest. Andrea recruited more SPE members during 2012 than anyone else in the Gulf Coast Region. This is the second time in a row she won for recruiting new SPE members! Who is going to beat her next year?

WED-TH
March 6-7



EAST TEXAS OILFIELD EXPO

The 2013 East Texas Oilfield Expo will be held on Wednesday, March 6th and Thursday, March 7th, 2013 at the Maude Cobb Convention Center in Longview, Texas. Approximately 1200 exhibitors from across the country will converge in Longview for the two-day event, making this the largest oil and gas trade show in the ArkLaTex region. Companies from every facet of the industry will be on hand, and there will also be heavy equipment displays, demonstrations, door prizes and more.

The East Texas Oilfield Expo is one-of-a-kind for this region, both in its scope and in its policies which protect the investments of our exhibitors and sponsors and ensure everyone present can enjoy a relaxed but professional, industry-oriented atmosphere. Our Public Attendance Policy outlines how we ensure the crowd attending our event is industry-only to ensure maximum attendee relevance, protect exhibitor investment and maximize your ROI and lead-gathering potential.

We provide many opportunities for oil and gas companies and organizations to be involved in the show. Besides exhibiting, we provide many sponsorship options for purchase, including A La Carte options. We also offer advertising opportunities including the ability to advertise at our future expos!

This is an exciting time for all companies who do business in the ArkLaTex. We look forward to your participation in our upcoming show, and are ready to assist you in any way to ensure your involvement is a total success.

REGISTER

easttexasoilfieldexpo.com/register-to-attend/

CONTACT

Texas Classic Productions LLC
2107 Courthouse Dr., Ste. 106
Longview, Texas 75605
866-918-5550
info@texasclassicproductions.com

ADVERTISING OPPORTUNITIES

easttexasoilfieldexpo.com



"Used by the field pumpers ...
...all the way up to management!"

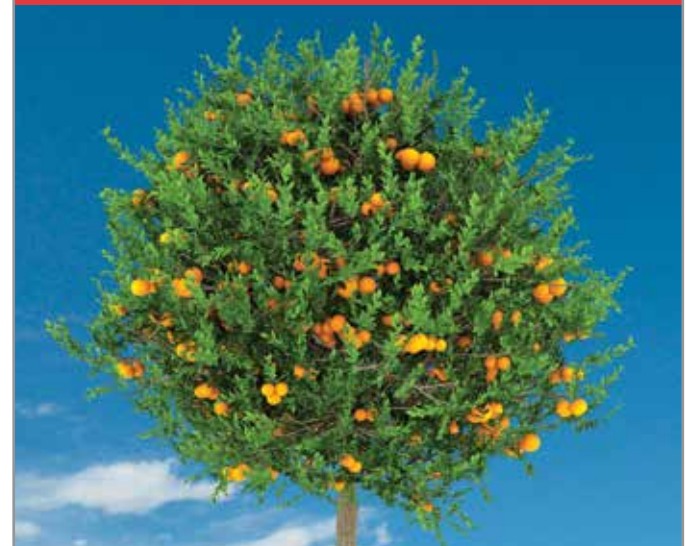


Oilfield Production Management Software

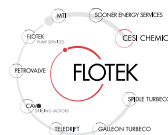
www.productioneer.com
(713) 401-9584

- Production Allocation
- Production Reporting
- 24/7 Support
- Desktop & Web App

SAVING THE PLANET, ONE FRAC AT A TIME



Our latest citrus-based hydraulic fracturing chemicals will revolutionize the way the world thinks about fracturing and will improve your production.



For more information contact
cesimkt@flotekind.com
or call
832-308-CESI (2374)

SPE DIGITAL ENERGY CONFERENCE AND EXHIBITION 2013

The SPE Digital Energy Conference and Exhibition is an international event, which addresses the key aspects of digital oilfield developments. Digital Energy 2013 will present the leading innovations that are moving our industry forward and provide a forum for collaboration among innovators, implementers, and end users.

Technical Program Highlights

Session topics include digitizing business and operating processes, artificial intelligence, remote operations, risk management, workflow transformation, and more.

SPE Training Classes Offered

Enhance your skills through SPE training courses, being held before the Digital Energy Conference. Learn more about the courses on intelligent well technology and oilfield data mining.

Sponsors and Advertisers

An array of unique promotional opportunities can help you design the perfect program to enhance your company's experience at the SPE Digital Energy Conference and Exhibition.

You can expose attendees and other businesses to your company and promote your expertise within the industry. We have a variety of high-impact sponsorship and advertising opportunities, including our new mobile app.

For complete details and registration, visit the website at:

www.spe.org/events/dec/2013/index.php

TU-TH
March 5-7

Event Info

LOCATION

*The Woodlands Waterway Marriott
Hotel and Convention Center
1601 Lake Robbins Drive
The Woodlands, Texas 77380
281-367-9797*

CONTACT

registration@spe.org

DEADLINE

*The early bird registration
deadline is February 19, 2013.*



SAVE THE DATE: SPE-GCS ANNUAL AWARDS BANQUET

Save the date and make plans to attend the SPE-GCS Annual Awards Banquet to be held on Thursday, May 23rd, 2013. Mr. Clarence P. Cazalot, President and CEO of Marathon Oil, will be addressing the audience. More details will be announced in the April and May Connect. For information regarding sponsorship opportunities, please contact James Rodgerson at james.rodgerson@bp.com.

THURS
May 23

SPEAKER

*Mr. Clarence P. Cazalot,
President and CEO of Marathon Oil*

LOCATION

*Rice Hotel, Crystal Ballroom
909 Texas Avenue
Houston, TX 77002*

CONTACT

*James Rodgerson
james.rodgerson@bp.com*

Intertek

Westport Technology Center

Providing Expertise in Reservoir Characterization and Optimization

Services include:

- PVT and Fluid Phase Behavior
- Routine and Special Core Analysis
- Enhanced Oil and Gas Recovery
- Geochemistry
- Petroleum Geology and Petrophysics
- Unconventional Reservoirs
- Drilling Fluids
- Flow Assurance
- Oilfield Corrosion
- Petroleum Microbiology

Intertek
Westport Technology Center
6700 Portwest Drive
Houston, Texas
713.479.8400
westportservices@intertek.com

www.intertek.com



Not all ball-drop systems are created equal.

- Red Adair



Jordan, Engineer, U.S.A.

Packers Plus invented the open hole, multi-stage ball drop StackFRAC® system over ten years ago and since then many other companies have followed in our footsteps.

Next time you complete a well, ask yourself if you're really using Packers Plus. Contact us today and let us help you maximize your assets.



www.packersplus.com

Don't put your offshore stimulation program on hold.



Stop waiting for old boats and outdated equipment.

Our stimulation fleet includes many of the industry's newest, most innovative vessels incorporating advanced instrumentation and redundant, job-critical equipment.

Of course, it takes more than modern technology to ensure your well gets the right treatment the first time. Drawing on our global expertise, we carefully plan each job to ensure a customized fluid system is delivered reliably and efficiently—lowering NPT and risk while enhancing your production and profits.

 bakerhughes.com



TETRA Technologies, Inc.



30 Years...Providing Solutions to the Oil & Gas Industry

- Well Testing
- Frac Flow Back
- Sand Management
- Early Production Facilities
- Data Acquisition Systems
- Production Enhancement
- Wellhead Compression
- Completion Fluids
- Casing Clean-Up Tools
- Fluid Filtration Services
- Frac Water Management
- Cased-Hole Wireline Services



Focused on Energy. Dedicated to Service.

tetrathec.com

© 2010 TETRA and the TETRA logo are registered trademarks of TETRA Technologies, Inc. All Rights Reserved.

THURS
March 14

11:30 AM TO 1:00 PM

The Emergence of Liquefied Natural Gas as a Transportation Fuel in North America

The current market environment in North America presents a unique opportunity to utilize liquefied natural gas (LNG) as a commercial fuel in various transportation, high-horsepower and industrial applications. An amalgam of key market factors, including, but not limited to, the abundance of domestic natural gas supply, the current price trajectory of both natural gas and oil-indexed fuels and the recent technological advances in the production of natural gas-powered engines have catalyzed the conversion of historical oil-derived fuel demand to LNG.

James Edward Burns, General Manager, LNG for Transport, Shell Americas will lead a discussion on the key commercial, technical and regulatory developments in this exciting new business space.

James Burns

James created Shell's small-scale LNG business in the Americas and currently serves as the General Manager for Shell's LNG for Transport activities throughout the Americas region. He is responsible for the division's overall strategy, execution, project deliveries and customer service in key transport sectors including marine, road transport and rail.

Drawing upon more than 20 years of experience in fundamental areas of both upstream and downstream sides of the energy business, including commercial, trading, and finance, James manages a team with unique transport

sector experience. The team is strategically positioned in key markets and is charged with identifying, maturing and operating business opportunities and growing the division.

Previously, James has held various positions in both global and regional roles based out of the United Kingdom, the Netherlands as well as the United States. After receiving a BBA, with an emphasis on marketing from California State University, James earned a EMBA from the University of Houston.



Event Info

SPEAKER

James Burns
GM, LNG for Transport - Americas
Shell

LOCATION

Petroleum Club
800 Bell Street, 43rd floor
Houston, TX 77002

EVENT CONTACT

Barry Faulkner
281-627-8790
barryfaulkner@earthlink.net

MEMBERS

\$35 before 3/13/13, \$40 after

NON-MEMBERS

\$40 before 3/13/13, \$45 after



DRILLING, FIREFIGHTING AND BLOWOUT SPECIALISTS

Neal Adams Services

A Proud Tradition of Well Control Excellence

Neal Adams
PhD, P.E.

Professional Services
Well Control Advisory Services, Relief Wells, Capping,
Contingency Planning, Safety

16434 De Lozier Street Tel: 713-849-4323
Houston, Texas 77040 Fax: 713-849-1943
E-mail: nealadams@comcast.net Cell: 713-817-6013



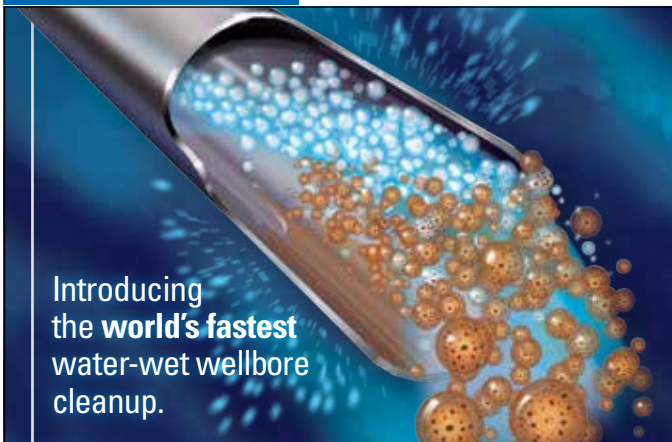
**STRESS
ENGINEERING
SERVICES INC.**

13800 Westfair East Drive
Houston, TX 77041-1101
Phone: 281.955.2900
www.stress.com

Engineering Problem Solvers



DESIGN • ANALYSIS • TESTING



Introducing the **world's fastest** water-wet wellbore cleanup.

The DEEPCLEAN[®] pill combines solvents and surfactants to create the world's first double emulsion cleanup pill.

The unique application of water-in-oil-in-water technology improves film removal and droplet dispersion, and can deliver water-wet tubulars with minimal contact time at lower chemical concentrations than conventional displacements.

Avoid completion NPT and future interventions, while protecting near wellbore reservoir permeability.



A Schlumberger Company

www.miswaco.slb.com

[®]Mark of M-I LLC

PREMIER INDUSTRY EVENTS DEVOTED TO RAPIDLY EMERGING TECHNOLOGY

MPUR

Houston, May 9th

MPUR fosters the sharing of emergent ideas in multiphase pumping and provides a focus on topics such as Subsea, Heavy Oil and Facility Minimization in Shale Gas/Oil Developments.

RESERVES for UNCONVENTIONALS

Houston, March 7-8

This two-day short course will examine methods available to forecast production and estimate reserves in unconventional (low to ultra-low permeability, hydraulically fractured, shale gas) reservoirs, and will identify the strength of weaknesses of commonly used methods.

Learn about our other events:

www.petroleumetc.com

PROCESS IMPROVEMENT

MAXOIL IS A GLOBAL CONSULTANCY WITH A PROVEN TRACK RECORD IN ENHANCING OIL AND GAS PRODUCTION, ASSET AND FIXED OPERATIONAL EFFICIENCY



- Gas Treatment
- Fluids Separation
- Produced Water Management
- Trouble Shooting
- Debottlenecking
- Process Engineering
- Flow Assurance
- Advanced Diagnostics
- Production Chemistry

MATURE ASSET OR NEW DEVELOPMENT - PROCESS OPTIMIZATION VIA A HOLISTIC APPROACH

Team of Industry Specialists
Practical Cost Effective Solutions
Objective Technical Assessments
Application of Operational Expertise



contact@maxoilsolutions.com • www.maxoilsolutions.com
ABERDEEN | LONDON | HOUSTON | STAVANGER | KUALA LUMPUR | PERTH



Oilwell Guidance, LLC

14427 Interdrive West, Houston, TX 77032
832-554-2477 oilwellguidance.com

MWD & LWD Services & Personnel Mud Pulse, EM & Resistivity Technology



- Proven, reliable Positive Pulse MWD technology, for directional-only or directional + gamma
- Fully-trained on-site support personnel
- Complete fleet maintenance programs with QA systems



NITROGEN WELL TEST WIRELINE WELL OPTIMIZATION CONSULTING FLARESTACK PRODUCTION SERVICES



www.priorityenergyllc.com

877-317-7467

COMMITTED TO SAFETY

Hydraulic Fracturing of Horizontal Wells—Realizing the Paradigm Shift That Has Been 30 Years in Development

“The latest multi-stage well completion and stimulation technologies have revolutionized the development of unconventional resources.”

Horizontal drilling as a field development technique was pioneered in the early 1980s. As drilling technology advanced, the industry was rapidly able to increase the extended reach of wells and the length of lateral drilled. However, for much of this time, the completion was limited to single zone techniques employing chemical and pressure diversion technologies in an attempt to stimulate the lateral section. Gradually, the industry went through a phased period of testing, culminating in the mechanical isolation technologies of “sliding sleeve” and “plug-and-perf” completions. The outcome of this has been a paradigm shift in unconventional field development where the use of horizontal wells with 15 to 40 mechanically isolated stimulation zones (stages) have resulted in a step change in field development costs and, as a consequence, resulted in the US horizontal rig-count reaching over 50% of all active rigs drilling.

The presentation is divided into three sections:

- A review of horizontal well stimulation technology development including the author’s first-hand experience of West Texas tests in the 80s, North Slope Alaska wells in the 90s and current applications in a variety of unconventional resources,
- A discussion of the two main types of multi-stage completion technologies being employed together with the application of both cross-linked and slickwater fracturing, and
- A review of current applications and results.

Dr. C. Mark Pearson

Dr. C. Mark Pearson is an SPE distinguished member who has over 30 years of experience in both the E&P and service industries. He is a well-known industry expert in the field of well completion and stimulation technology. He has published over 30 technical papers and has received a number of industry accolades for the economic impacts of his work.

He is President of Liberty Resources LLC, a Denver-based independent E&P company currently on a 4-rig drilling and completion program in the Bakken Oil Shale of North Dakota where he and his team have applied multi-stage completion and stimulation technology over the past three years to the extent that 35-stage horizontal wells are now standard for field development.

Event Info

SPEAKER

Dr. C. Mark Pearson
President
Liberty Resources LLC

LOCATION

Greenspoint Club
16925 Northchase Dr
Houston, Texas 77060

EVENT CONTACT

Jonathan Godwin
281.921.6526
jgodwin@carboceramics.com

MEMBERS

\$35 in advance, \$40 at door

NON-MEMBERS

\$35 in advance, \$40 at door

SAVE THE DATE

The Completions and Productions Study Group along with the Digital Energy Study Group will be hosting a joint dinner event on Wednesday, April 24th, 2013. Be on the lookout for more information!

VIKING CRITICAL WELL ENGINEERING CONSULTING SERVICES
ENGINEERING, L.C.
VIKING'S TEAM OF HIGHLY TRAINED PETROLEUM PROFESSIONALS LEND THEIR EXPERIENCE TO CREATIVE WELL DESIGNS.
WE CAN HELP PLAN AND EXECUTE YOUR TOUGH WELLS.

- PETROLEUM CONSULTING
- HTHP WELL DESIGN
- PROJECT MANAGEMENT
- FAILURE ANALYSIS
- TRAINING

VISIT OUR WEBSITE: WWW.VIKINGENG.NET
OR CALL: (281) 870-8455 IN HOUSTON

1st Annual
Oil & Gas Charity Golf Tournament
Benefiting **houston foodbank**

April 1, 2013
Pine Crest Golf Club
\$125 per player

Contact:
Jerry Murphy
(832) 284-2955
jmurphy@pvicom.com
www.pvisoftware.com

hosted by Pegasus Vertex, Inc.

PetroSkills®

Build Your Foundation

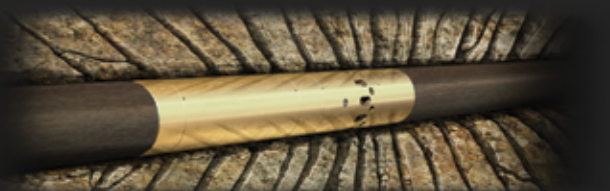
To maximize convenience, PetroSkills will deliver its most popular courses multiple times in the Houston area over the next few months. These courses build a firm foundation and a solid platform for careers in their disciplines.



- **Basic Petroleum Engineering Practices – BE:**
April 15-19, July 8-12, 9-13 Sept, Nov 18-22
- **Production Operations 1 – PO1:**
June 10-21, Sept 16-27, Dec 2-13
- **Applied Reservoir Engineering – RE:**
April 22-May 3, June 17-28, July 15-26, Nov 4-15, Dec 2-13
- **Completions and Workovers – CAW:**
June 24-28, October 7-11, November 11-15
- **Directional, Horizontal, and Multilateral Drilling – DHD:**
April 1-5, Dec 2-6
- **Evaluating and Developing Shale Resources – SRE:**
May 20-24, August 26-30

For details on these or our other 250 sessions in the Gulf Coast, contact Patty Davis, (832) 426-1203 or patty.davis@petroskills.com, or see details and full selection at www.petroskills.com

RECORD-BREAKING PERFORMANCE



62 INDEPENDENTLY-TREATED STAGES WITH THE NEW SUPER-PORT STIMULATION SLEEVE

AVAILABLE FOR OPENHOLE, CEMENTED, AND HPHT APPLICATIONS



CONTACT YOUR LOCAL PEAK REP AT 713.223.5751 OR INFO@PEAKCOMPLETIONS.COM

Waterflood

Commissioning & Startup

Materials & Corrosion

Chemical Systems Engineering

Flow Assurance

GATE
GIBSON APPLIED TECHNOLOGY & ENGINEERING LLC

16360 Park Ten Place
Suite 206
Houston, TX 77084
P (281) 398-5781
F (281) 398-0935
www.gatellc.com

PATENTED **proNova™** by TDE
DRILLING PERFORMANCE

CREW PERFORMANCE MEASUREMENTS

AUTOMATIC OPERATIONS DETECTION

INVISIBLE LOST TIME DETECTION

281.755.7595
www.pronova-tde.com

Upstream Unification-Bringing Together Disciplines Through Better Software Integration

Upstream disciplines have worked in segments with specific handoff artifacts and debriefing. Although available upon request or through information systems, direct and correlated information could see improvement. Southwestern Energy has undertaken the task of unifying the various real time activities (specifically geosteering, drilling, completions and production) into a synergistic set of tools and methodologies. This effort includes continuing improvement of external vendor toolsets, internal operations and rapid response applications and solutions.

Mark Reynolds will present an overview of the various initiatives, highlight some of the successes and outline potential follow-on prospects.

Mark Reynolds

Mark Reynolds is the Solution Architect for Upstream Integrated Operations. He is responsible for pulling together individual systems, repositories, control and operations centers to add value, efficiency and safety to the upstream exploration and production environments.

Save the Date

JOINT DINNER

The Completions and Productions Study Group along with the Digital Energy Study Group will be hosting a joint dinner event on Wednesday, April 24th, 2013.

Be on the lookout for more information!

Event Info

SPEAKER

*Mark Reynolds
Architect, Upstream Integrated
Operations
Southwestern Energy*

LOCATION

*The Courtyard on St. James Place
1885 Saint James Place
Houston, TX 77056*

EVENT CONTACT

*Carol Piovesan
949-232-6353
cpiovesan@apooffshore.com*

MEMBERS

\$35

NON-MEMBERS

\$35

Advanced Ceramics Make the Difference



Breakthrough sand control technology

Innovative thrust bearings

(714) 384-9488 www.petroceram.com

ceradyne, inc.
PetroCeram™

MOST VERSATILE PIPELINE

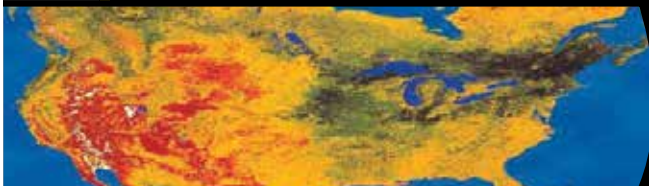
Proudly modernizing pipelines. Again.

FLEXPIPE SYSTEMS
A SHAWCOR COMPANY

www.flexpipesystems.com
www.shawcor.com

PHDWIN™

Integrated Economics & Decline Curve Software



EVEN MORE POWERFUL WITH

PHDRMS™

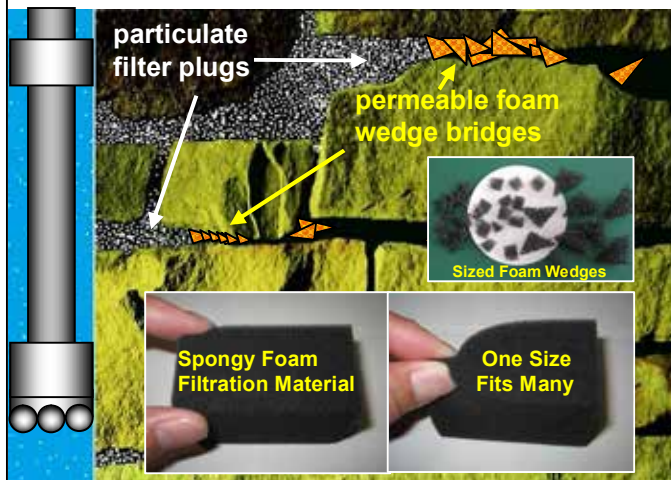
Intuitive Interface
Affordably Priced
60-Day Money-back Guarantee

Schedule an **online**
presentation
TODAY!

POWERFUL FLEXIBLE SECURE

TRC CONSULTANTS, LC
888.248.8062 | www.phdwin.com

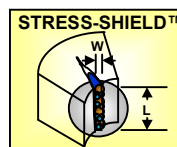
New LCM that One Size Fits Many™ for Cementing/Drilling to Meet the New Requirements



Squeeze Pills
Remedial Only



Mixed in Mud
Preventive & Remedial



GeoMechanics Based
Preventive Only

For case histories and other details, contact Max Wang at 281-450-4944 or go to www.sharp-rock.com

Sharp-Rock Technologies, Inc.

© 2012 Sharp-Rock Technologies, Inc. All rights reserved.

Control With Confidence

Engineered Prevention, Response & Results

Whether onshore, offshore or underground, Cudd Well Control has complete solutions for well planning and intervention. As a Qualified Third Party, we provide the necessary oversight to help you meet NTL-05 and NTL-06 requirements. Our team of engineering experts will assist you with a wide range of services, from rig inspections and blowout contingency planning, to specialized training and modeling. With a proven track record of success confronting blowouts and problem wells in any environment, Cudd Well Control is the preferred choice.

Well Control Services:

- Oil Well Firefighters and Blowout Specialists
- Well Control & Kick Resolution
- Underground Blowouts
- Dry Ice/Cryogenic Freeze Services
- Hot Tap and Valve Drilling Services
- Engineering Services
- Rig Inspections
- Drilling Plan Enhancements
- Blowout Contingency Planning
- Specialized Training
- Relief Wells
- Kick Modeling
- Gas Dispersion Modeling
- BOEMRE Compliance



www.cuddwellcontrol.com • +1.713.849.2769

Innovative Proppant Technology



OilPlus PROPPANTS

New OilPlus™ Proppants
Provide Enhanced Oil
Recovery for Your Well.

E-mail us at info@momentive.com

MOMENTIVE

Polar Star™

Oilfield Consultants
Guiding your projects along the right path

Call us for help with:

- Downhole equipment designs
- Completion design development
- Equipment selection

- Marketing plans
- Sales collateral
- Sales promotion

Contact: James Garner

Phone: (281) 797-5186

Fax: (281) 485-7078

P.O. Box 3462, Pearland, TX 77588

Email: james.garner@polarstarconsultants.com

Web Site: www.polarstarconsultants.com

Well Delivery Management- Drill More Wells in Less Time Improving Efficiency

With the introduction of newly developed production technologies to extract oil and natural gas from previously difficult or inaccessible sources, many oil and gas companies have chosen to tap the potential of onshore gas divisions to positively affect their bottom line. These assets may drill thousands of wells per year. The challenge of planning and tracking numerous wells increases daily as companies leverage new technologies and strive to manage costs.

Key Challenges:

- How to manage enormous volumes of data
- How to deliver wells more quickly and more efficiently
- How to exchange data across disciplines, applications and assets
- How to cope with Excel Hell

This presentation will review a case study involving a major oil company that undertook an audit revealing one gas asset was using more than 100,000 spreadsheets and 500 databases to manage well data with manual intervention still required to take well data through to the geologic and reservoir models. Each onshore gas asset managed planned wells with somewhat different processes and tools. In response, the company launched an initiative to define an onshore gas roadmap for new standard solutions. The initiative would offer a collaborative environment that allowed each asset to learn and improve from other assets and to streamline business processes in the overall well delivery process.

Theresa Parks

Teresa Parks is the Solution Lead for Well Delivery and Well Integrity Management focusing on delivering business value while partnering with the business to understand challenges, processes and context to apply the appropriate solutions. She has over 15 years of Information Technology

experience within the Oil & Gas, Telecom and IT Service sectors. Her experience includes IT Project Management and Business Analysis for E & P projects. Teresa is a graduate of UT Arlington with a B.S. in Management Information Systems.



Event Info

SPEAKER

*Theresa Parks
Solution Lead, Well Delivery and
Well Integrity Management
Wipro Technologies*

LOCATION

*Greenspoint Club
16925 Northchase Dr.
Houston, Texas 77060*

EVENT CONTACT

*Amy Timmons
713-836-6563
amy.timmons@weatherford.com*

MEMBERS

\$35

NON-MEMBERS

\$35

Slider
Automated Directional Drilling

IMPROVE YOUR HORIZONTALS

- ✓ ON-BOTTOM TOOL FACE ORIENTATION
- ✓ INCREASED MOTOR LIFE
- ✓ INCREASED ROP & HORIZONTAL REACH CAPABILITY
- ✓ ELIMINATES ORIENTATION TIME LOSSES

www.slb.com **Schlumberger**

Vibration Technology, Inc.
Workover □ Completions □ Drilling

Leading the industry in stuck pipe recovery.

Shreveport □ New Iberia □ Houston

For more information, log on to:
vibrationtechnology.com

INNOVATIVE TECHNOLOGY FOR REMOVING STUCK TUBULARS



FACT: No foreign proppant can match CARBO's quality.

CARBO Ceramics® has maintained the highest standards of proppant quality from the mine to the wellsite for more than 30 years. Don't put your multimillion dollar investment at risk with marginal alternatives – trust CARBO.



Test your knowledge
FracOrFiction.com
 Or text* CARBO to 99000

Reel SIMPLE

When corrosion is not an option, choose

FIBERSPAR ®

THE LEADER IN SPOOLABLE PIPELINE SYSTEMS

Go to www.fgspipe.com for more information DELIVERING EXPERIENCESM

NOV Fiber Glass Systems

Email: fgspipe@nov.com

Directionally challenged?

If your directional drilling program is more challenging than you expected, maybe you need a new directional driller. Maybe you need Ryan Directional Services, Inc.

Ryan has experience in virtually every important oil and gas shale play. We know the potential roadblocks and how to address them before they cost you money. And that takes drilling to a new level of efficiency.

Call Ryan at 281.443.1414 and see how our directional drilling program will change your experience from challenging to rewarding.

www.nabors.com



Rose & Associates

UCRA Course

Advanced decision analysis and resource play assessment course

UCRA Software

To model, risk and value staged drilling in resource plays

allisondunn@roseassoc.com

Transferring E & P Risk Assessment Expertise
 Instruction • Software Tools • Practical Consultation

Shale Resource Assessment & Development — Full Life Cycle Integrated Approach

A full lifecycle integrated approach for shale resource is an essential process to establish value creation and to ensure reserves and production growth. With this process, key issues and uncertainties in shale resource development are resolved as plays evolve from concept screening, to exploration and resource assessment, to full development. The integrated approach relies upon key elements, which include Field Demonstrations and Mechanistic Studies.

The design, planning and implementation of systematic and “scalable” field demonstrations are essential elements required to address strategic, development and operational issues. Mechanistic studies are utilized to understand the key production drivers. Shale gas productivity is typically much lower than conventional reservoir systems and often lower than tight gas reservoirs. The flow behavior in these systems must be understood and quantified in order to effectively characterize and predict well and reservoir performance behavior. The primary take-away from this presentation is that new processes and advances in field demonstrations and mechanistic models are key factors required for appraisal and development of global shale resources.

P. K. Pande

P.K. Pande manages an integrated team of subsurface professionals including geologists, geophysicists and reservoir engineers in application of subsurface technologies and best practices for unconventional and Deepwater resources.

He has also served as Subsurface Manager, Ourhoud Field, Algeria, the country's second largest oilfield. He has contributed to the development and reservoir management of

numerous world-class reservoirs including Alaska's Prudhoe Bay, North America's largest oilfield and Endicott, the first arctic offshore oilfield. He was actively involved in the design, planning and implementation of the Prudhoe Bay Miscible Gas Project, the largest enhanced oil recovery project in the world. He served as Project Manager for U.S. Department of Energy's flagship project on improved recovery and reservoir characterization methods for shallow-shelf carbonate reservoirs in the Permian Basin.



Event Info

SPEAKER

*P. K. Pande
Director, Reservoir Technology
Anadarko Petroleum Corporation*

LOCATION

*Greenspoint Club
16925 Northcase Drive
Houston, Texas 77060*

EVENT CONTACT

*Sumitra Mukhopadhyay
281-784-5742
smukhopadhyay
@superiorenergy.com*

MEMBERS

\$35

NON-MEMBERS

\$40

TIW
www.tiwtools.com
DRILLING AND COMPLETION SOLUTIONS

Compass Directional Guidance, Inc.
Manufacturer & Supplier of
MWD & LWD Systems, Including EM & Resistivity

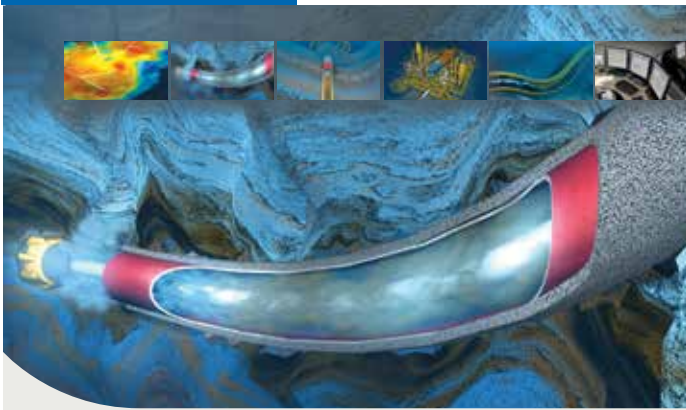
14427 Interdrive West
Houston, TX 77032
832-554-2474
www.compass-mwd.com

Ready to ship kits, full fleet maintenance & 24/7 support

Parts sales, now made easier via our online store

Shop technician & field operator training, at our facility or yours

Scan the QR code for more information



Proven dynamic well control solutions

Challenging wells are becoming more commonplace and requires advanced simulation tools to plan and operate with acceptable risk. Increased complexity decreases margins making accurate dynamic models even more important.

Combining the WELLFLO, OLGA® and Drillbench® technology, SPT Group is providing a range of user friendly, dynamic models tailored for the drilling industry. A unique combination of simulation power and efficient user interfaces yields a working environment ideally suited for the drilling life cycle.

IADC/SPE Managed Pressure Drilling & Underbalanced Operations
San Antonio, April 17-18 2013

SPT GROUP
A Schlumberger Company

FREECAP® SWELLABLE PACKER

40,000 swellable packers sold

99.9% success rate

575°F (302°C) maximum temperature (FREECAP GT)

8 standard polymer blends

4 top challenges: cement integrity, multi-stage fracturing, zonal isolation, SAGD applications

1 proven solution

Think all swellable packers are alike? Numbers tell a different story.

For ensuring cement integrity and optimizing multi-stage completions, FREECAP® swellable packers are chosen by operators who know that packer performance matters. Add our exceptional customer service and deliveries that can help you plan your wells on a tight timeline, and the advantages really add up. Isn't it time you made FREECAP® swellable packers your No. 1 choice?


TAM INTERNATIONAL
Inflatable and Swellable Packers

PERFORMANCE MATTERS.

www.tamintl.com/performance matters



Even the best equipment can't do it alone.

Hunting's reputation for excellence in well construction technology is just part of the picture. From tubular goods and connection technologies to mud motors, everything we manufacture is made better by the most respected engineers in the business, and our 24/7 support, repair and testing across North America, Europe, Asia and the Middle East. Optimize your drilling investment with Hunting.

To learn more, visit www.huntingplc.com



© 2011 Hunting (HOS1125/0511/spegcs)



FMC Technologies

**More uptime.
More fracturing.**

**We put you first.
And keep you ahead.**

www.fmctechnologies.com

Two Emerging Water Quality Issues in the Permian Basin

This talk summarizes two different water quality issues that are on the rise in the Permian Basin. Algal blooms in frac ponds and increasing salinity of the aquifer can each contribute to erratic performance of borate-cross-linked guar fracturing fluids if they are not addressed. We present two case studies where a first-principles approach to the underlying chemistry yielded superior fluid performance in the face of these significant challenges.

Bruce MacKay

Bruce MacKay has been with Schlumberger for seven years, first as a Product Developer and Research Scientist, and most recently, as the Client Support Laboratory Manager for the North American business unit of Schlumberger Well Services. Prior to joining SLB, he was a Visiting Scientist at the California Institute of

Technology after completing a Ph.D. in inorganic chemistry at the University of British Columbia. His area of expertise, broadly stated, is the application of chemical knowledge to problems in stimulation fluids.

Event Info

SPEAKER

Bruce MacKay
Product Developer &
Research Scientist
Schlumberger

LOCATION

Norris Westchase Center
9990 Richmond Ave., Suite 102
Houston, Texas 77042

EVENT CONTACT

Amy Timmons
713-836-6563
Amy.Timmons@Weatherford.com

MEMBERS

\$35

NON-MEMBERS

\$40

NOTE

This is a joint event with the Westside Study Group

ppitech.net (713) 464-2200

The Quality Assurance Solution

Where On-Demand Technology Meets On-the-Ground Expertise

PPI Quality & Asset Management LLC

PETROpro software suite

Integrated Energy Services, Inc.

Robert Barba
Petrophysicist

Log Analysis
Completion Optimization

500 N. Capital of TX Hwy
Building 4-150
Austin, TX 78746
C: (713) 823-8602
F: (713) 583-9400
RBarba75@gmail.com

www.integrated-energy-services.com

ARE YOU IN THE KNOW ABOUT
FLOW ASSURANCE?

WANT YOUR OFFSHORE
OPERATIONS TO BE
ON TARGET?

LOOKING FOR THE PLACE TO BE
WHEN IT COMES TO
SUBSEA?

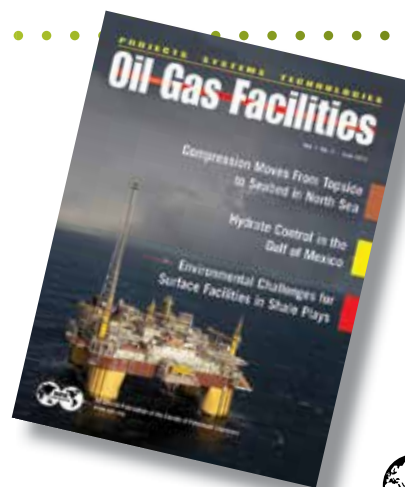
Oil and Gas Facilities

**The best magazine for projects, facilities,
and construction professionals.**

Subscribe today!

Get a one-year subscription for only USD 39*

www.spe.org/go/ogfsignup



*Not an SPE member? Get special savings when you join SPE.

Official publication of the Society of Petroleum Engineers

THURS
March 07

11:30 AM TO 1:00 PM

R&D Leadership Perspectives on Running an R&D Organization

Ben van den Brule will be discussing management of a research organization. Included in this discussion will be topics regarding balancing the project portfolio between incremental and blue sky projects, people development in R&D organizations, R&D tools and methods (lean development, crowd sourcing, etc.) and leveraging collaborations outside of oil & gas. His talk will be followed by a question and answer session.

Ben van den Brule

Ben van den Brule graduated cum laude as a Mechanical Engineer and obtained a PhD in Applied Physics. He worked at the Philips Research laboratories from 1982 to 1991 until he joined Shell in Rijswijk. He has worked in the general research group and was part of the team that started Shell Gamechanger. After that, he left to be the Burgers Professor at TU Delft where he held a chair in Rheology between 1995

and 2000. In 2000, he returned back to Shell full time and joined the management team of Shell's upstream R&D. In 2007, he moved to Houston to become the manager of Research and Engineering of the Unconventional Oil directorate. Currently, he is the Vice President for Unconventional Technologies in Shell's Innovation, Research and Development Organization.

Event Info

SPEAKER

*Ben van den Brule
Vice President for
Unconventional Technologies
Shell*

LOCATION

*Norris Westchase Center
9990 Richmond Ave., Suite 102
Houston, Texas 77042*

EVENT CONTACT

*Skip Davis
281-359-8556
skdavis@technologyintermediaries.com*

MEMBERS

\$35 before 3/4/13, \$40 after

NON-MEMBERS

\$40 before 3/4/13, \$45 after

DIRECTIONAL
AND
HORIZONTAL
DRILLING
SPECIALISTS



WWW.NOVADIRECTIONAL.COM

INTEGRATED PRODUCTION SERVICES



Coiled Tubing & Nitrogen
Eline & Slickline
Snubbing
Plunger & Gas Lift
Flowback & Production Testing
Pressure Testing & Nipple Up-Down

www.ipsadvantage.com

Measured Solutions from
The Completion Diagnostics Company

Annular Pack Quality?

With ProTechnics gamma-gamma density imaging services you can directly measure:

- Annular pack quality
- Top of annular pack
- Long-interval pack coverage
- Horizontal gravel-pack quality

PACKSCAN



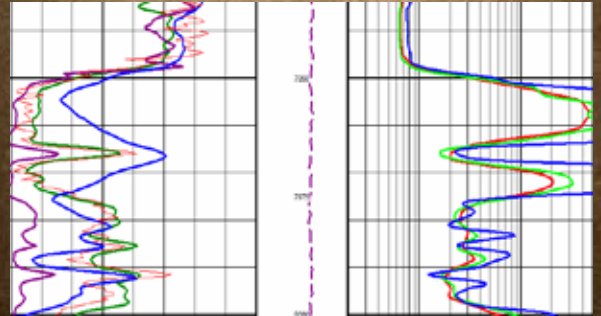
ProTechnics

A Production Enhancement division of Core Laboratories

www.corelab.com/protechnics 713-328-2320



TGS DELIVERS LAS PLUS



More than just your standard LAS.

LAS Plus upgrades the standard LAS to a full curve suite, including all available gamma ray, spontaneous potential, caliper, resistivity, conductivity, sonic, density, density correction, neutron, tension and rate of penetration curves. This data has been closely examined for standardization and quality assurance and is ready for cross-section, formation evaluation and petrophysical analysis.

Access LAS Plus data quickly and easily through the online well data portal, LOG-LINE Plus®!

Learn more at WWW.TGS.COM



www.GeoSteering.com

Specialists in geosteering with LWD

Real-time and 24 / 7

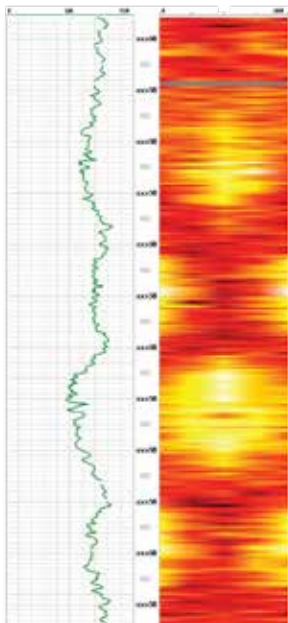
GR to Quad-Combo
Image Interpretation
Resistivity Modeling

USA

Bakken & Three Forks,
Niobrara, Eagleford,
Granite Wash, Woodbine,
Permian, Haynesville,
Barnett, Woodford, etc

International

Middle East, Europe, Latin
America, China etc.



Real-time Log from Eagle Ford Geosteering Job

281-573-0500
info@geosteering.com



A FULL SERVICE WELL TESTING COMPANY

- Well Testing Services
- Frac Flow Back and Well Clean-up
- Drill Stem Testing (DST)
- Perforating Services
- Subsea Intervention/Landing String Assemblies
- Pipe Line Services
- Wireline
- Water Treatment



www.pts-technology.com
281-498-7399

Integration of Shale Gas Production Data and Microseismic for Fracture and Reservoir Properties

We present a novel approach to calculate drainage volume and well performance in shale gas reservoirs using a Fast Marching Method (FMM) combined with a geometric pressure approximation. Our approach can fully account for complex fracture network geometries associated with multistage hydraulic fractures and their impact on the well pressure and rates. The major advantages are its simplicity, intuitive appeal and computational efficiency. For example, we can compute and visualize the time evolution of the well drainage volume for multimillion cell geologic models in seconds without resorting to reservoir simulation. A geometric approximation of the drainage volume is then used to compute the well rates and the reservoir pressure.

The speed and versatility of our approach makes it ideally suited for parameter estimation via inverse modeling of shale gas performance data. We utilize experimental design to perform the sensitivity analysis to identify the most significant parameters and a genetic algorithm to calibrate the relevant fracture and matrix parameters in shale gas reservoirs by history matching of production data. In addition to the production data, microseismic information is utilized to help us constrain the fracture extent and orientation and to estimate the stimulated reservoir volume (SRV). The proposed approach is applied to a fractured shale gas well. The results clearly show reduced uncertainty in the estimated fracture parameters and SRV, leading to improved forecasting and reserve estimation.

Dr. Michael King

Dr. Michael J. King is Professor and Holder of the Foundation CMG Chair in Robust Reduced Complexity Modeling and the LeSuer Chair in Reservoir Management in the Department of Petroleum Engineering at Texas A&M University. He is the recipient of the 2011 SPE Reservoir Description and Dynamics Award, has served as

a Distinguished Lecturer for the SPE and is the co-author of the SPE textbook on Streamline Simulation: Theory and Practice. He joined A&M in 2009 after enjoying 27 years with BP America, both in the U.S. and overseas. His original training was in Physics and Mathematics and he has a PhD from Syracuse University.



Event Info

SPEAKER

*Dr. Michael King
Professor, Department of
Petroleum Engineering
Texas A&M University*

LOCATION

*The Courtyard on St. James Place
1885 Saint James Place
Houston, TX 77056*

EVENT CONTACT

*Jose Villa
281-544-2612
j.villa@shell.com*

MEMBERS

\$35

NON-MEMBERS

\$40



RYAN DIRECTIONAL SERVICES

A NABORS COMPANY

NABORS.COM

Engineers - need technical document development help?

- Drilling & completion programs
- Engineering reports & specifications
- Manuals & instructions
- Printing, binding & publication



ZAETRIC®

www.zaetric.com
713-621-4885
inquiries@zaetric.com

Are you having EAGLE FORD PROBLEMS?

No problem for Signa.

Know what to expect...

- Knowledge
- Feasibility
- Engineering

...Expect what you know

- Management
- Execution
- Analytics

Over 2 Million feet of Eagle Ford experience

→ IMPROVED ROI

→ MINIMAL NPT

Drilled one foot @ a time

Signa Engineering Corp.
Houston, TX USA
www.signaengineering.com

Signa Professional Engineers
Customer Satisfaction
Contact: Dave Roseland
281.774.1026

LUFKIN Expect More

More SYSTEMS
More SERVICES
More LOCATIONS

Pump jacks with legendary quality and reliability have been the reputation of Lufkin for more than 100 years. In that same tradition, Lufkin now offers more artificial lift systems, more support services and more locations to serve operators around the world. These highly engineered solutions, supported by our experienced staff, deliver optimum production from your oil and gas wells.

Now, more systems and services to meet your requirements:

Field Optimization	Plunger Lift
Beam Pumping Units	Gas Lift
Hydraulic Pumping Units	Completion Products
Progressing Cavity Pumps	Maintenance & Repair
Reciprocating Pumps	Training
Automation	

Scan for More Product Information

The Energy Flows Through Us®

LUFKIN.COM

STIMULATION MONITORING

To get the most out of every frac, real-time near- and far-field monitoring is a winning combination.

In unconventional plays, you're challenged by how to make more oil or gas while reducing costs and meeting environmental parameters. Halliburton has the solution: distributed temperature sensing—used in conjunction with microseismic fracture mapping—that gives operators the ability to make adjustments during a treatment to help assure every planned zone is treated.

What's your stimulation monitoring challenge?
For solutions, visit www.pinntech.com

Solving challenges.™

Pinnacle
A HALLIBURTON SERVICE

© 2013 Halliburton. All rights reserved.

EVENT RECAP

Thank you to the Young Professionals and the Tennis committee for providing this month's photos. We'd like to feature more photos from our section events and luncheons in the Connect. If your committee or study group has photos from your recent events, luncheons, dinners or conferences, please send the original, high resolution file to the Connect editor at editor@spegcs.org.



gyrodata

- » High Accuracy Gyro Wellbore Surveying and Guidance
- » Rotary Steerable Automated Drilling Systems
- » Monitor SWD™: Survey While Drilling (Inc, Az, TF)
- » Mud Motor Services and Rentals

Gulf Coast Sales and Operations 24 hour contact

(281) 213-6300 / (832) 667-9450

or see <http://www.gyrodata.com/>



Dyna-Drill®

Manufacturers of
Drilling Motor Components

- Mud Motor Power Sections
- Coil Tubing Power Sections
(Sizes: 2 7/8" to 11 1/2")
- Matrix-3® Coated Bearings
- Precision Machining
(Sizes: 1 11/16" to 3 3/4")

www.dyna-drill.com

Power That Lasts™



RICE/UH SPE STUDENT CHAPTER MEMBER *Receives SPE-Dallas Section Scholarship Award*



Samarth P. Saxena is one of the recipients of SPE – Dallas Section Scholarships awarded for the year 2012-2013. He is currently pursuing his Masters in Petroleum Engineering from University of Houston. He has a Masters in Electrical Engineering from University of Houston and a Bachelors Degree in Electrical Engineering from Maulana Azad National Institute of Technology, India.

His current focus is on his thesis “Development of a Simple Tunable Viscosity Model for Hydrocarbon Mixtures.” His current areas of interest include fluid properties, flow behavior and drilling optimization. He is currently working as a co-op at Halliburton in the Wireline and Perforating PSL. He has been the recipient of three scholarships, two grants and one fellowship during his tenure as a full-time student at University of Houston. He is a member of SPE and IEEE and serves as a committee member for SPE – UH/Rice Student Chapter. He is also a member of Phi Beta Delta and Golden Key International Honor Societies.

Broaden your expertise.



NExT oil and gas training and career development instructs more than 10,000 E&P professionals every year.

With hands-on mentoring and coaching, at a Schlumberger training facility or on the job, NExT training can help you expand your technical expertise.

To view our full list of courses and to enroll, visit www.NExTtraining.net

Featured Course—Geological Field Trip

Fluvial and Deltaic Architecture and
Advanced Modeling using Petrel Software

May 10–17, 2013

Utah and Colorado, USA

NExT
A Schlumberger Company

**FOR TOTAL
WATER MANAGEMENT**

SELECT
ENERGY SERVICES
selectenergyservices.com

THURS
March 14

11:30 AM TO 1:00 PM

A RECIPE FOR SHAMELESS, CONSTRUCTIVE SELF-PROMOTION

Your education begins when you are confronted with a problem to which the answer is not in the back of any book and for which no equation has ever been derived. The skill required for life is to be able to create a solution for the unsolvable problem and to be able to sell that solution to an audience that really wants a perfect answer. Come and listen to 50 years of experience of doing just that.

DR. GEORGE E. KING is a registered professional engineer with over 40 years of experience since joining Amoco Research Center in 1971. His technical work has provided advances in foam fracturing, production from unstable chalk, underbalanced perforating, sand control reliability, gas shale completions and fracturing. Currently, he is working with new technologies for Apache Corporation. He holds degrees in Chemistry from Oklahoma State University, as well as Chemical Engineering and Petroleum Engineering from the University of Tulsa, where he also taught completions and workovers for 11 years as an adjunct professor. He has written 65 technical papers and was awarded the 2004 SPE Production Operations Award and the 2012 Engineer of the Year award from the Houston Region of the Texas Society of Professional Engineers. He is Apache's Distinguished Engineering Advisor.

SPEAKER

Dr. George King
Distinguished Engineering Advisor
Apache Corp

LOCATION

Petroleum Club
800 Bell Street, 43rd Floor
Houston, TX 77002

CONTACT

Pavitra Timbalia
504-717-3804
pavitra.a.timbalia@exxonmobil.com



“Learn, Network, Door Prizes”

May 17, 2013
8:00am - 4:30pm

The United Way Center
50 Waugh Drive
Houston, TX 77007

For Registration Updates Check:

<http://www.spegcs.org/committees/young-professionals>

 @SPEYP

 <https://www.facebook.com/spegcs.yv>

 SPE Gulf Coast YP



EEC 2013 Co-Chairs:

Carlos Hernandez at carlos.hernandez@chevron.com or
Alex Beszterda at alex.c.beszterda@conocophillips.com

MARCH YOUNG PROFESSIONALS SOCIAL

DATE

March 14, 2013

LOCATION

Sawyer Park
2412 Washington Ave
Houston, TX 77007
713-398-8442
sawyerparkhouston.com

TIME

6:30-8:30 pm

INFO

Free Refreshments & Appetizers!

DETAILS

Please visit SPEGCS.org

FRIDAY
June 7

13th Annual Sporting Clays Tournament

Registration

Time Preference AM PM

Team Captain _____ City/State/Zip _____

Company _____ E-Mail _____

Address _____ Phone _____

SPE Member Name /Number _____

Shooter No 2 _____ Shooter No 4 _____

Company _____ Company _____

E-Mail _____ E-Mail _____

Phone _____ Phone _____

Shooter No 3 _____ Shooter No 5 _____

Company _____ Company _____

E-Mail _____ E-Mail _____

Phone _____ Phone _____

METHOD OF PAYMENT

Payment: Check Visa MC AMEX DISC

Card Number _____ Expiration Date _____

Name as it appears on card _____

Signature _____

Email _____

Total to Charge Card _____

(Make checks payable to SPE-GCS)

COST

\$850 per 5-person team
Includes a 100-round course

LOCATION

Rio Brazos Hunting Preserve
4430 Guyler Rd.
Simonton, TX 77476
www.rio-brazos.com

REGISTRATION

Yim Szeto
832-816-8966
361-798-3862 Fax

REGISTRATION INFO

At least one shooter must be a
current SPE member

Shooters provide own ammo
(No. 7 ½, 8, 9 shot ONLY)

Starting time and station sent
to team captain only

Sponsors will receive first
consideration

Mail entry form with payments to:
SPE-GCS Sporting Clays
10777 Westheimer Road, Suite 1075
Houston, TX 77042

Tournament Sponsorship

SPONSORSHIP COMMITTEE CHAIRPERSON

Greg Rachal

MI-Swaco a Schlumberger Company

713-628-3341

grachal2@slb.com

- Diamond Sponsor** **\$7,500**
As a diamond sponsor, your company will be recognized as a Corporate Sponsor of the tournament and the company name will appear on the sponsor board. Your sponsorship entitles you to four (4) complimentary teams in the tournament and V.I.P. parking.
- Platinum Sponsor** **\$5,000**
As a platinum sponsor, your company name will appear on the sponsor board. Your sponsorship entitles you to two (2) complimentary teams in the tournament and V.I.P. Parking.
- Gold Sponsor** **\$3,500**
As a gold sponsor, your company name will appear on the sponsor board. Your sponsorship entitles you to one (1) complimentary team in the tournament and V.I.P. parking.
- Silver Sponsor** **\$2,000**
As a silver sponsor, your company name will appear on the sponsor board. Your sponsorship entitles you to V.I.P. parking.
- Bronze Sponsor** **\$1,500**
As a bronze sponsor, your company name will be on the sponsor board. Your sponsorship entitles you to V.I.P. parking.
- Entry Gift Sponsor (limited to 3)** **\$5,000**
As an entry gift sponsor, your company name will be on the sponsor board and on entry gifts (to be determined by committee) handed out to each shooter.
- Shuttle Cart Sponsor (limited to 3)** **\$2,000**
As a shuttle cart sponsor, your company name will appear on the sponsor board and on the shuttle carts used at the tournament.
- Shotgun Sponsor** **\$1,200**
As a shotgun sponsor, your company name will appear on the sponsor board. Your sponsorship entitles you to personally present the shotgun on stage at the tournament to the winner.
- Shooter # Sponsor** **\$1,000**
As a Shooter # Sponsor, your company name will appear on each competitor # that all participants will display.
- Scorecard Sponsor** **\$1,000**
As a scorecard sponsor, your company name will be on the sponsor board, competitor #, and on each scorecard
- Corporate Sponsor** **\$500**
As a corporate sponsor, your company name will be on the sponsor board.
- Hospitality Tent Sponsor (limited to 5)** **\$500**
As a hospitality sponsor, your company name will be on the sponsor board. As part of your sponsorship, you will be allowed to set up at or near the pavilion to provide one of the following: (1) Breakfast, (1) Lunch, (2) Drinks, or (1) Gun Cleaning Service.
- Station Sponsor** **\$250**
As a station sponsor, your company name will appear on the sponsor board. As part of your sponsorship, you will be asked to set up a tent at an assigned station to provide refreshments for shooters throughout the day.

SEE BACK OF THIS PAGE FOR SPONSORSHIP FORM

In order to receive full advertisement benefit of your sponsorship, your sponsorship form and payment must be received by May 1st, 2013.



COMMITTEE SPORTING CLAYS

Sponsorship Form

**MAIL SPONSORSHIP FORM
& PAYMENT TO**

SPE-GCS Sporting Clays
10777 Westheimer Road
Suite 1075
Houston, TX 77042

PLEASE CHECK THE LEVEL OF SPONSORSHIP YOU WISH TO CHOOSE

All sponsorship levels will receive next year's tournament information approximately one month before the general membership mail-out. All sponsors receive preference on shooting times when possible. All profits will be used for SPE scholarships, local charities, community service projects, and member services.

- | | | | |
|--|--|---|--|
| <input type="checkbox"/> Diamond Sponsor
\$7,500 | <input type="checkbox"/> Bronze Sponsor
\$1,500 | <input type="checkbox"/> Shotgun Sponsor
\$1,200 | <input type="checkbox"/> Corporate Sponsor
\$500 |
| <input type="checkbox"/> Platinum Sponsor
\$5,000 | <input type="checkbox"/> Entry Gift Sponsor
\$5,000 | <input type="checkbox"/> Shooter # Sponsor
\$1,000 | <input type="checkbox"/> Hospitality Tent Sponsor
\$500 |
| <input type="checkbox"/> Gold Sponsor
\$3,500 | <input type="checkbox"/> Shuttle Cart Sponsor
\$2,000 | <input type="checkbox"/> Scorecard Sponsor
\$1,000 | <input type="checkbox"/> Station Sponsor
\$250 |
| <input type="checkbox"/> Silver Sponsor
\$2,000 | | | |

Company _____ Contact Name _____

Mailing Address _____ Phone _____

City/State/Zip _____ Fax _____

METHOD OF PAYMENT

Payment: Check Visa MC AMEX DISC

Card Number _____ Expiration Date _____

Name as it appears on card _____

Signature _____

Email _____

Total to Charge Card _____

(Make checks payable to SPE-GCS)

COMMITTEE AUXILIARY

MARCH 2013 ACTIVITIES

The Houston SPE Auxiliary will not meet in March 2013. Please watch for news of our April meeting at which we will honor all of our past Presidents.

If you know someone who is interested in joining us or our activities, please contact Nancy Giffhorn, 281-360-4631 or rgiffhorn@AOL.com

EVENT

March 27, 2013

HOSTESS

Maxine Hillman

BOOK

*The Physick Book of
Deliverance Dane
by Katherine Howe*

MORE INFO

*Martha Lou Broussard
713-665-4428*

**DISCUSSION
LEADER**

Martha Lou Broussard



2013 Golf Tournament

KINGWOOD COUNTRY CLUB | DEERWOOD COUNTRY CLUB

You are cordially invited to attend the 40th Annual SPE-GCS Golf Tournament. This Gulf Coast Section event is an important part of fundraising for our Scholarship Fund, which helps send several potential clients or co-workers to college. These scholarships are even more important now with an unprecedented Industry demand for increased engineering, resources and people. We need your support more than event. Please consider participating or sponsoring the event. Visit <http://www.spegcs.org/events/2069/> for more information and to register for the annual golf tournament.

When you select one of our prestigious Masters or Bachelors sponsorship packages, a specific student scholarship is awarded in your company's name; you will help select the recipient, specify the engineering discipline, and have the chance to present the scholarship at the awards banquet. All of the benefits of the Deerwood or Kingwood Gold package are included, as appropriate.

Premium Sponsorships

MASTERS SPONSORSHIP OPTIONS 2, 3, OR 4 TEAMS | \$5,000

The golfing choices for Masters are:

- Masters A: 2 Deerwood Teams
- Masters B: 1 Deerwood Team and 2 Kingwood Gold Teams
- Masters C: 4 Kingwood Gold Teams

BACHELORS SPONSORSHIP OPTIONS 1 OR 2 TEAMS | \$2,500

The golfing choices for Bachelor's sponsors are:

- Bachelors A: 1 Deerwood Team
- Bachelors B: 2 Kingwood Gold Teams

Team Only

DEERWOOD COURSE | \$1,850

All Deerwood teams are Gold level sponsorships, and include

- One foursome team on the premier course
- Morning or afternoon tee time
- Complimentary Food, Cigars and Open Bar throughout the day.
- Special recognition on our tournament table boards and in the tournament book

KINGWOOD GOLD | \$1,200

- One foursome on your choice of Kingwood Country Club golf courses
 - Choice of morning or afternoon shotgun start
 - Appetizers in the clubhouse after the round.
- In addition to the above, Kingwood Gold sponsors receive special recognition (including your company logo) on our tournament table boards and in the tournament book.

KINGWOOD REGULAR | \$700

For all Kingwood registrations, we will try to accommodate your choice of course when you express a preference.

SPE GULF COAST SECTION DIRECTORY

Your guide to your organization leaders

Officers

CHAIR

Steve Baumgartner, Marathon Oil Corp.
281-435-0264
sbaumgartner@marathonoil.com

VICE-CHAIR

Mike Strathman, The Trinity Group, Inc.
713-614-6227
mike-strathman@att.net

SECRETARY

Lucy King, Kinder Morgan CO₂ Company
713-369-9017
lucy_king@kindermorgan.com

TREASURER

Robert Bruant, Jr., BP America, Inc.
281-366-2157
Robert.Bruant@bp.com

VICE TREASURER (ADHOC)

David Tumino, Murphy Oil
281-717-5123
tuminospe@hal-pc.org

CAREER MANAGEMENT

David Flores, Lucas Energy, Inc.
713-528-1881
dflores@lucasenergy.com

COMMUNICATIONS

Valerie Martone, Anadarko
832-636-3196
valerie.martone@anadarko.com

COMMUNITY SERVICES

Xuan (Sun) VandeBerg Harris, Consultant
832-444-5143
xuan.harris@gmail.com

EDUCATION

Gabrielle Guerre, RyderScott
713-750-5491
gabrielle_guerre@ryderscott.com

MEMBERSHIP

Jeanne Perdue, Occidental Oil and Gas
713-215-7348
jeanne_perdue@oxy.com

PAST CHAIR

Hiep Vu, Kosmos Energy
214-593-5095
hvu@kosmosenergy.com

PROGRAMS

David Tumino, Murphy Oil
281-717-5123
tuminospe@hal-pc.org

SOCIAL ACTIVITIES

Scott McLean, Express Energy Services
281-772-4927
smclean@eeslp.com

TECHNOLOGY TRANSFER

Russ Neuschaefer, Schlumberger
281-285-1775
rneuschaefer@slb.com

YOUNG PROFESSIONALS

Sandeep Peadam, ConocoPhillips
713-591-5738
sandeep.padam@conocophillips.com

DIRECTOR 2012-14

Alex McCoy, Occidental Oil and Gas
713-366-5653
alexander_mccoy@oxy.com

Kevin Renfro, Anadarko

832-636-8613
kevin.renfro@anadarko.com

Wolfgang Deeg, Shell

281-544-8279
wjfdeeg@spemail.org

DIRECTOR 2011-13

Jeff Whittaker, Welltec
281-398-9355
jwhittaker@welltec.com

Marise Mikulis, Baker Hughes, Inc.

281-275-7288
marise.mikulis@bakerhughes.com

Steve Turk, Weatherford

281-260-1300
stephen.turk@weatherford.com

SPE GULF COAST NORTH AMERICA REGIONAL DIRECTOR

Bryant Mueller, Aclaro Softworks, Inc
713-781-2000 x 300
bryant.mueller@aclaro.com

Committee Chairs

AWARDS

James Rodgerson, BP
281-221-4085
james.rodgerson@bp.com

CONTINUING EDUCATION

Dorian Hicks, Rice University
713-444-3230
dth1@rice.edu

ESP WORKSHOP

John Patterson, ConocoPhillips
281-221-5298
john.c.patterson@conocophillips.com

GOLF

Cameron Conway, Cactus Pipe
281-217-0660
cconway@cactuspipe.com

INTERNSHIPS

Gabrielle Guerre, Ryder Scott
713-750-5491
gabrielle_guerre@ryderscott.com

MAGIC SUITCASE

Sean K. O'Brien, Chevron
832-854-3660
sean.obrien@chevron.com

NEWSLETTER

Kim Tran, Energy XXI
713-826-7492
editor@spegcs.org

SCHOLARSHIP

Tanhee Galindo, BASF
713-428-4919
tanhee.galindo@basf.com

SPORTING CLAYS

Tim Riggs, Inwell Directional Drilling
713-201-4290
tim.riggs@inwell.com

TENNIS

Bob Fu, BP
713-591-9808
bob.fu@bp.com

WEB TECHNOLOGY

Subash Kannan, Anadarko
713-385-7242
subash_kannan@yahoo.com

SECTION MANAGER

Kathy MacLennan, SPE-GCS
713-779-9595 x 813
kmaclennan@spe.org

Study Group Chairs

BUSINESS DEVELOPMENT

Steve Mullican, Grenadier Energy Partners
281-907-4120
smullican@grenadierenergy.com

COMPLETIONS & PRODUCTION

Mark Chapman, CARBO Ceramics
281-921-6522
mark.chapman@carboceramics.com

DIGITAL ENERGY

Carol Piovesan, APO Offshore
949-232-6353
cpiovesan@apooffshore.com

DRILLING

Joe Tison, Greene Tweed
281-784-7805
wtison@gtweed.com

GENERAL MEETING

James Maffione, Decision Strategies
713-465-1110
jmaffione@decisionstrategies.com

HEALTH, SAFETY, SECURITY, ENVIRONMENT AND SOCIAL RESPONSIBILITY

Trey Shaffer, ERM
281-600-1016
trey.shaffer@erm.com

INTERNATIONAL

Michael Cherif, ExxonMobil
713-656-7303
michael.h.cherif@exxonmobil.com

NORTHSIDE

Naval Goel
650-307-7267
navalgoel@hotmail.com

PERMIAN BASIN

Dan Tobin, ConocoPhillips
832-486-2924
Dan.C.Tobin@conocophillips.com

PETRO-TECH

Marci Nickerson, Consultant
713-446-3400
mnick52@sbcglobal.net

PROJECTS, FACILITIES, CONSTR.

Bill Kinney, Technip
281-249-2799
wkinney@technip.com

RESEARCH & DEVELOPMENT

Skip Davis, Technology Intermediaries, LLC
281-359-8556
skdavis@technologyintermediaries.com

RESERVOIR

Jose Villa, Shell
281-544-2612
j.villa@shell.com

WATER & WASTE MANAGEMENT

Joseph Kilchrist, Ziff Energy
713-302-2727
jkilchrist@sbcglobal.net

WESTSIDE

Alex McCoy, Occidental Oil & Gas
713-366-5653
alexander_mccoy@oxy.com

CONNECT

Information

Newsletter Committee

CHAIRMAN | Kim Tran
editor@spegcs.org

AD SALES | Pat Stone
starlite1@sbcglobal.net

BOARD LIAISON | Valerie Martone

EDITOR/DESIGN | Deuce Creative
deucecreative.com

SPE Houston Office

GULF COAST SECTION MANAGER

Kathy MacLennan | kmaclellan@spe.org

GCS ADMINISTRATIVE ASSISTANT

Sharon Harris | sharris@spe.org

HOURS & LOCATION

10777 Westheimer Road, Suite 1075

Houston, Texas 77042

P 713-779-9595

F 713-779-4216

Monday - Friday 8:30 a.m. to 5:00 p.m.

Photo Submissions

We are looking for member photos to feature on the cover of upcoming issues! Photos must be at least 9" by 12" at 300 DPI. Email your high resolution picture submissions to:
editor@spegcs.org

Change of Address

To report a change of address contact:
Society of Petroleum Engineers
Member Services Dept.
P.O. Box 833836
Richardson, Texas 75083-3836
1.800.456.6863
service@spe.org

Contact

For comments, contributions, or delivery problems, contact editor@spegcs.org.

NEVER DIG & HAUL AGAIN!

Salt Damaged Soils Restored



NON-PROFIT ORGANIZATION
U.S. POSTAGE PAID
PERMIT NO. 6476
HOUSTON, TX



20 YEARS OF PROVEN TECHNOLOGY

Remediate and restore salt damaged soils.

DeSalt Plus™ was developed for treatment of sodium damaged soils. It quickly displaces and removes sodium from the soil, restoring the soil to a natural growing condition.

Distributors in the USA, Canada, and Mexico

(281) 723-8282
sosenvironmental.com

SOCIETY OF PETROLEUM ENGINEERS
GULF COAST SECTION

10777 Westheimer Road
Suite 1075
Houston, TX 77042

CALENDAR

March 2013

Sunday	Monday	Tuesday	Wednesday	Thursday	Friday	Saturday
						1 2
		Petro-Tech East Texas Oilfield Expo	East Texas Oilfield Expo	Research & Development East Texas Oilfield Expo		
3	4	Digital Energy Conf & Exhibition	5	6	7	8 9
		Northside		General Meeting Board Of Directors		
10	11		12	13	14	15 16
			Digital Energy Drilling Permian Basin & Westside			
17	18	19	20	21	22	23
			Completions & Production Auxiliary	Reservoir		
24/31	25	26	27	28	29	30