



Gulf Coast Section

FEBRUARY
2013

CONNECT

SPE GULF COAST SECTION NEWSLETTER

Beyond Shale Production:

Infrastructure, Industry and Jobs

GENERAL MTG P.13

THE NEW SPEGCS.ORG

P. 9

**ACCELERATING TECHNOLOGY
DEVELOPMENT THROUGH
INVESTMENT IN YOUNG COMPANIES
WITH EXCITING TECHNOLOGY**

RESEARCH AND DEVELOPMENT P. 23

**UNCONVENTIONAL WISDOM IN
SHALE OIL/GAS COMPLETIONS &
MICROSEISMICS INTERPRETATION**

NORTHSIDE P.17

**FIVE THINGS YOU DIDN'T WANT
TO KNOW ABOUT HYDRAULIC
FRACTURES**

COMPLETIONS & PRODUCTION P.15

SPEGCS.ORG

CHAIRMAN'S CORNER

STEVE BAUMGARTNER
2012-2013 SPE-GCS Chair



The SPE Gulf Coast Section leadership succession process is guided by identifying incoming talent and by participating members of study groups, committees and board positions. As more volunteers move up in our organization, more positions become vacant, creating an opportunity for you to get involved. The future success of the GCS lies in the hands of these volunteers. I challenge you to review the many opportunities available within our section and contact the corresponding committee or study group chair and offer your support. Simply log on to www.spegcs.org and select the committees or study groups that interest you. Your details will be forwarded to the appropriate chair who will then contact you.

The GCS Scholarship Committee is now taking applications for the 2013-2014 academic year. The Committee is dedicated to increasing interest in the petroleum industry among graduating high school seniors and retaining students currently enrolled in petroleum-related academic disciplines. The committee works diligently to insure a steady flow of focused, high quality and talented graduates entering the petroleum industry. The deadline for applications is February 11, 2013. For more details about the program, please go to www.spegcs.org.

The 2013 Engineers Week Celebration will be held on February 17-23, 2013. Congratulations to the 2013 SPE-GCS Engineer of the Year nominee, Dr. John Lee with University of Houston and the SPE-GCS Young Engineer of the Year, Valerie Martone with Anadarko Petroleum Corporation. Both of these members deserve recognition for their enthusiasm and dedication to the section and the Society of Petroleum Engineers. Valerie will receive her award at the Young Engineer of the Year banquet on Monday, February 18.

As I mentioned in my December column, Hiep Vu (Past Chair) and the SPE-GCS Succession Planning and Nominating Committees have been hard at work identifying qualified candidates to fill various board positions for the 2013-2014 program year. During the SPE-GCS December Board meeting, Hiep presented the following slate of candidates for the Board's consideration: Vice Chair Jeanne Perdue, OXY;

Vice Treasurer Lucy King, Kinder Morgan; Secretary David Flores, Lucas Energy; Director-at-Large Dr. John Lee, University of Houston; Director-at-Large Trey Shaffer, ERM; and Director-at-Large Deepak Gala; Shell.

The Board voted unanimously to accept the proposed candidates for the upcoming program year—their biographies are featured in this issue of the *Connect*. Thank you to Hiep and his committees for providing the Board with a solid slate of section officers. I am confident that our future officers will help the section continue to deliver on its mission.

The SPE Gulf Coast Section Nominating Committee led by Hiep Vu is collecting nominations for international and regional SPE awards. International awards recognize individuals that make significant technical and professional contributions to the petroleum engineering profession and to the worldwide oil and gas industry. Regional and section awards recognize members who contribute exceptional service and leadership within SPE as well as making significant professional contributions within their technical discipline. Any member can nominate a deserving candidate either through the Nominating Committee or directly to SPE on or before the deadline of February 15, 2013. Details can be found on the SPE website (www.spe.org).

Please send your comments and suggestions to me at: sbaumgartner@marathonoil.com.

CONNECT

Information

Newsletter Committee

CHAIRMAN *Kim Tran*
SALES *Pat Stone*
BOARD LIAISON *Valerie Martone*
EDITOR/DESIGN *Deuce Creative*
deucecreative.com

*For comments, contributions,
or delivery problems, contact
editor@spegcs.org.*

*The deadline for each issue is
6 weeks before publication on the
first of each month. The SPE Gulf
Coast Section newsletter is published
twelve times each program year
and is mailed to more than
15,000 SPE members in Houston.*

SPE Houston Office

*Gulf Coast Section Manager
Kathy MacLennan
kmaclelland@spe.org*

*GCS Administrative Assistant
Sharon Harris
sharris@spe.org*

*10777 Westheimer Road, Suite 1075
Houston, Texas 77042
Phone 713-779-9595
Fax 713-779-4216*

*Office hours: 8:30 a.m. to 5:00 p.m.
Monday through Friday*

Advertising

*For information on advertising
in this newsletter or on the SPE
GCS website, please contact:
Pat Stone | 281-530-9711
starlite1@sbcglobal.net*

Photo Submissions

*We are looking for member photos
for upcoming issues! Email your
high resolution pictures to:
editor@spegcs.org*

FEATURES

February 2013

STUDY GROUPS

GENERAL MEETING

Beyond Shale Production: Infrastructure, Industry and Jobs

P. 13

COMPLETIONS & PRODUCTION

Things You Didn't Want to Know about Hydraulic Fractures

DIGITAL ENERGY

Study Group Meeting

P. 15

NORTHSIDE

Unconventional Wisdom in Shale Oil/Gas Completions & Microseismics Interpretation

P. 17

PERMIAN BASIN

Wolfcamp Shale in the Permian Basin

P. 19

PETRO-TECH

Spatial Data Management – Science and Application

P. 21

RESEARCH AND DEVELOPMENT

Accelerating Technology Development through Investment in Young Companies with Exciting Technology

P. 23

RESERVOIR

Analytical Waterflood Surveillance & Optimization

P. 25

WESTSIDE

A Look Back at Eagle Ford Completion Trends

P. 27

COMMITTEES

YOUNG PROFESSIONALS

Young Engineer of the Year Valerie Martone

Executive Club Winners

P. 28

AUXILIARY

February 2013 Activities

EDUCATION

2013-2014 SPE-GCS Scholarship

P. 29

IN EVERY ISSUE

THEN & NOW

by Buddy Woodroof

P. 5

SPE-GCS MEMBERSHIP REPORT

January 2013

VOLUNTEER SPOTLIGHT

Valerie Martone

P. 7

SPE GULF COAST SECTION

DIRECTORY

Your guide to your organization leaders

P. 30

MORE

THE NEW SPEGCS.ORG

P. 9

NEW BOARD MEMBERS

2013-2014

P. 11

THE SPE HYDRAULIC FRACTURING TECHNOLOGY CONFERENCE

February 4 -6, 2013

RESERVOIR SIMULATION

SYMPOSIUM

February 18 -20, 2013

P. 18

THURS
February 14

7:30 AM TO 10:30 AM

SPE-GCS BOARD OF DIRECTORS MEETING

LOCATION

*SPE Houston Office
10777 Westheimer Rd.
Suite 1075
Houston, TX 77042*

EVENT CONTACT

*Sharon Harris
713-457-6821 EXT. 821
713-779-4216 FAX
sharris@spe.org*

LUFKIN

Expect More

More **SYSTEMS**
More **SERVICES**
More **LOCATIONS**

Pump jacks with legendary quality and reliability have been the reputation of Lufkin for more than 100 years. In that same tradition, Lufkin now offers more artificial lift systems, more support services and more locations to serve operators around the world. These highly engineered solutions, supported by our experienced staff, deliver optimum production from your oil and gas wells.

Now, more systems and services to meet your requirements:

- | | |
|---------------------------------|---------------------------------|
| Field Optimization | Plunger Lift |
| Beam Pumping Units | Gas Lift |
| Hydraulic Pumping Units | Completion Products |
| Progressing Cavity Pumps | Maintenance & Repair |
| Reciprocating Pumps | Training |
| Automation | |

Scan for More Product Information



The Energy Flows Through Us®

LUFKIN.COM

FRAC or **FICTION**

FACT: No foreign proppant can match CARBO's quality.

CARBO Ceramics® has maintained the highest standards of proppant quality from the mine to the wellsite for more than 30 years. Don't put your multimillion dollar investment at risk with marginal alternatives – trust CARBO.

CARBO®
 C E R A M I C S

Test your knowledge
FracOrFiction.com
 Or text CARBO to 99000



Even the best equipment can't do it alone.

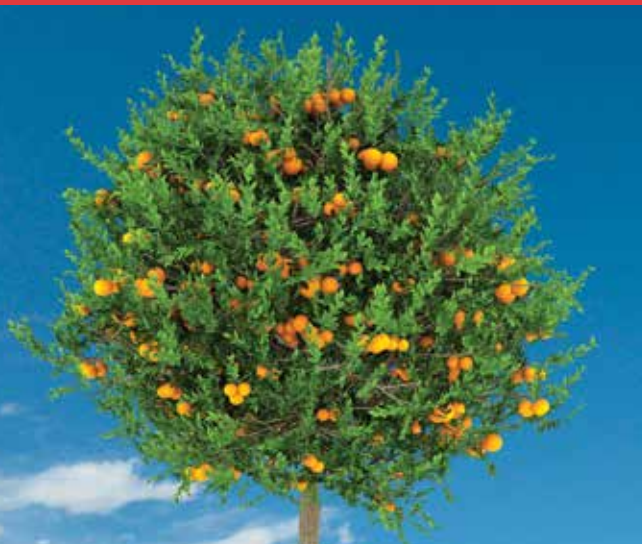
Hunting's reputation for excellence in well construction technology is just part of the picture. From tubular goods and connection technologies to mud motors, everything we manufacture is made better by the most respected engineers in the business, and our 24/7 support, repair and testing across North America, Europe, Asia and the Middle East. Optimize your drilling investment with Hunting.

To learn more, visit www.huntingplc.com

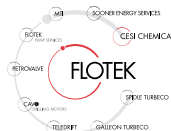


© 2011 Hunting (HOS1125/0511/spegs)

SAVING THE PLANET, ONE FRAC AT A TIME



Our latest citrus-based hydraulic fracturing chemicals will revolutionize the way the world thinks about fracturing and will improve your production.



For more information contact
cesimkt@flotekind.com
 or call
 832-308-CESI (2374)

THEN & NOW

Column by
BUDDY WOODROOF

FEBRUARY 1962

Plans have surfaced for the spudding of the first wildcat in Ireland by Ambassador Oil and its partners. Reports are that the roughnecks will be very small men wearing green coveralls.

Meanwhile, back across the pond, wildcatting efforts in Nevada and Washington continue to turn up dry.

Nitrogen is touted as holding promise of solving so many oilfield production problems that demand may ultimately exceed supply. (What about CO₂, folks?)

The first vessel ever designed specifically for drilling, the drill ship "Cuss II," prepares to spud its first hole in Cook Inlet, Alaska.

U.S. active rig count – 1,647

FEBRUARY 1987

A new African counterpart to OPEC is off to a rocky start as Libya refuses to accept Egypt's membership.

Meanwhile, Venezuela continues its efforts to boost its stature in the world oil markets by stressing its higher crude production capacity and insisting on a bigger OPEC production quota. (So, what else is new with OPEC, APEC, et al?)

As oil companies lobby against them, alcohol fuels designed to address air quality concerns continue to get mixed results from states considering the alternate fuels. (Even ultra-liberal Colorado delays any implementation efforts in its state.)

Brazil's deepwater Campos Basin play continues to sizzle, and accelerated drilling plans are reported by the Brazilian government.

U.S. active rig count – 916

FEBRUARY 2002

Despite the seesaw effect of OPEC production decisions on global crude oil quality, there has been little change in the long-standing 55:45 (sour: sweet) global split. (Is that ratio higher than you thought it would be?)

Gulf of Mexico spar development continues apace, with on-going progress on Murphy's Medusa and Dominion-Williams' Devils Tower truss spars.

The U.S. wind industry ends its most productive year by doubling previous records for new installations. However, the expiration of the federal wind production tax credit at the end of the year is clouding the future for this renewable energy source.

Russian President Vladimir Putin continues his cagey end game with the U.S. and Saudi Arabia—ostensibly deferring to the Saudis with what appears to be minimal production cutbacks, while courting the U.S. over the Iraq situation by portraying his country as a reliable oil supply alternative to the Middle East.

Light sweet crude oil - \$19.71/bbl; Natural gas - \$2.05/MMBtu; U.S. active rig count – 853

THE REST OF THE YARN

This month we continue our extended look at the life and times of oil magnate, John D. Rockefeller.

On August 28, 1859, an event occurred that would dramatically impact the future of Rockefeller. A man named Edwin L. Drake tapped a rich reservoir of crude oil near Titusville, Pennsylvania, about 70 miles from Cleveland. Drake's discovery of America's first producing oil well marked the start of the modern petroleum industry. Even in those pre-automobile days, oil was extremely valuable because it could be refined into kerosene for lamps and lubricants for factories and farms.

When news of Drake's strike hit Cleveland, businessmen raced to build refineries and find the quickest, most efficient way to transport kerosene to the East Coast and Europe. Rockefeller found himself in the right place at the right time.

The firm of Clark and Rockefeller purchased a half interest in a refinery company in 1863, and for the next few years, Rockefeller devoted himself to the oil business, studying it, analyzing it, and ultimately falling in love with it. The "bubbling crude," he determined, was the something big he had been seeking. In 1865, at age 25, he purchased operating control of Cleveland's largest refinery. "Someday," he blurted out, "I'll be the richest man in the world." Meanwhile, Rockefeller was establishing a stable home life. In 1864, he married Laura Celestia Spelman—nicknamed Cettie—a deeply religious woman with whom he would have five children, only four of whom would survive to adulthood (one daughter lived for only a year after her birth).

Next month, a close look at JDR's values and the raising of his children.

ANSWERS TO JANUARY'S QUIZ

The Kirkuk field in Iraq is the Middle East oil field that was drilled on an oil seep that was mentioned in Biblical times.

FEBRUARY'S QUIZ

What component of natural gas flows through a hole faster, conducts heat better, and transmits sound at a higher velocity than any other gas except for hydrogen?

CONGRATULATIONS TO NOVEMBER'S WINNER - GEORGE FENATI WITH BONANZA CREEK ENERGY

If you would like to participate in this month's quiz, e-mail your answer to contest@spe.org by noon February 15th. The winner, who will be chosen randomly from all correct answers, will receive a \$50 gift card to a nice restaurant.

Intertek

Westport Technology Center

Providing Expertise in Reservoir Characterization and Optimization

Services include:

- PVT and Fluid Phase Behavior
- Routine and Special Core Analysis
- Enhanced Oil and Gas Recovery
- Geochemistry
- Petroleum Geology and Petrophysics
- Unconventional Reservoirs
- Drilling Fluids
- Flow Assurance
- Oilfield Corrosion
- Petroleum Microbiology

Intertek
 Westport Technology Center
 6700 Portwest Drive
 Houston, Texas
 713.479.8400
 westportservices@intertek.com

www.intertek.com



**“Used by the field pumpers ...
 ...all the way up to management!”**



Oilfield Production Management Software
 www.productioneer.com
 (713) 401-9584

- Production Allocation
- Production Reporting
- 24/7 Support
- Desktop & Web App

Don't put your offshore stimulation program on hold.



Stop waiting for old boats and outdated equipment.

Our stimulation fleet includes many of the industry's newest, most innovative vessels incorporating advanced instrumentation and redundant, job-critical equipment.

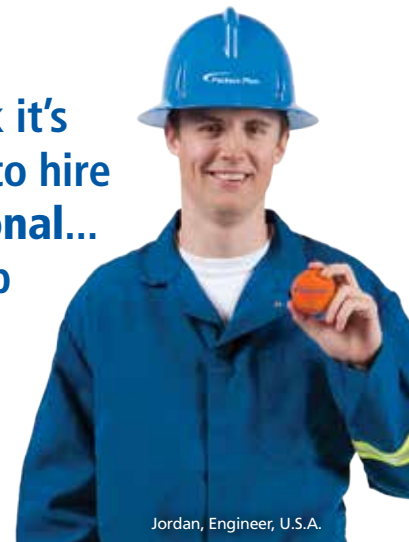
Of course, it takes more than modern technology to ensure your well gets the right treatment the first time. Drawing on our global expertise, we carefully plan each job to ensure a customized fluid system is delivered reliably and efficiently—lowering NPT and risk while enhancing your production and profits.

 bakerhughes.com



“If you think it's expensive to hire a professional... to do the job wait until you hire an amateur.”

- Red Adair



Jordan, Engineer, U.S.A.

Packers Plus invented the open hole, multi-stage ball drop StackFRAC® system over ten years ago.

Next time you complete a well, ask yourself if you're really using a Packers Plus system. Contact us today and let us help you maximize your assets.



www.packersplus.com

SPE-GCS MEMBERSHIP REPORT

January 2013

JANUARY 2013

Total: 10,899

YP: 1,879

NOVEMBER 2012

Total: 15,292

YP: 3,198

	JANUARY		NOVEMBER	
	Total	YP	Total	YP
<i>SPE-GCS Members</i>				
<i>New Members</i>	138	56	160	75
<i>Transferred to Section</i>	94	N/A	222	N/A
<i>Transferred out of Section</i>	166	N/A	120	N/A
<i>Unpaid</i>	4,853	1,379	1,669	625
<i>Student Members</i>	<i>Paid</i>	<i>Unpaid</i>	<i>Paid</i>	<i>Unpaid</i>
<i>Texas A&M</i>	278	383	791	136
<i>UH/Rice</i>	98	142	267	58
<i>HCC</i>	19	21	44	15
<i>Total</i>	395	546	1,102	209
<i>Total Paid/Unpaid</i>	11,294	5,399	16,394	1,878
<i>% Paid</i>	67.7%		89.7%	

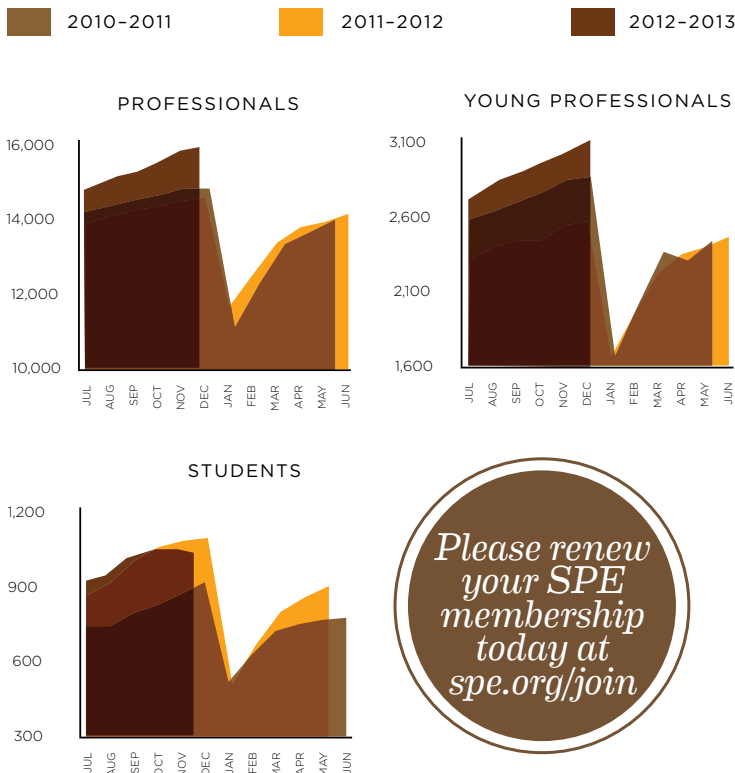


VOLUNTEER SPOTLIGHT

Valerie Walker Martone

The Society of Petroleum Engineers Gulf Coast Section (SPE-GCS) has selected Valerie Walker Martone as the 2013 Young Engineer of the Year (more on page 28). Valerie has worked very hard on the Section website makeover, and the Board would like to take this opportunity to thank her.

Valerie began her service in SPE GCS as the Vice Treasurer, Construction and Facilities Study Group, where she helped implement the successful Expanding Facilities Knowledge Workshop series. She was an Ambassador Lecturer at Rice University, University of Houston, and Texas A&M Kingsville. In 2008, Valerie was selected to be on SPE-GCS Young Professionals Board, where she co-chaired the Emerging Engineers Conference. She also enjoyed interviewing SPE-GCS potential scholarship recipients and serving on the Executive Event Committee. She then served on the SPE-GCS Board of Directors as Director-at-Large, and subsequently as Communications Chair overseeing the section's website and newsletter upgrades.





**OUR
ENGINEERS
LAY THE
GROUNDWORK
FOR DECADES OF
PROGRESS.**

At Chevron, you'll join a team with the technology to take on big challenges, the integrity to do it responsibly, and the drive to keep the world moving forward. Are you up to the job?

Chevron is hiring experienced production and reservoir engineers.

Please visit us online at chevron.com/careers to learn more and apply.

**JOIN THE
CHALLENGE.**



Human Energy®

THE LAUNCH OF THE NEW SPEGCS.ORG

By Valerie Martone, 2012-2013 Communications Director

In the September Connect, we announced that we were giving SPEGCS.ORG a facelift by rolling out an enhanced new website. The sleek new site would be faster, more user friendly, easier to maintain, more efficient and engaging. Our hope was that the new website would better align our members with the information they needed at their fingertips. We wanted to streamline the event creation and registration process for our volunteers and boost all the information tools that our members and visitors use everyday, such as the job board, committee and study group event registration, and archives of the presentations given.

The simple, organized format of our new site makes it easy to navigate to what you're interested in, whether it's tracking down a presentation you heard, learning how to advertise your company with us, or even finding a photo of you and your colleagues at a recent SPE-GCS event. One of the great things about our new site is its integration with SPEI as well as social networking sites such as LinkedIn, Facebook, Google+ and even Twitter.

We encourage you to sign up for the e-newsletter, become a member, or connect with other members on our various social media outlets. Make this your "go-to" place to connect with what's happening in SPE-GCS.

Visit the new site now and let us know what you think. We'd love to hear your feedback.

We'd like to thank all who were involved for making these much-needed improvements a reality. Now what are you waiting for? **Check it out and mark it as a favorite!**



HiWAY

FLOW-CHANNEL HYDRAULIC FRACTURING SERVICE



Mark of Schlumberger © 2013 Schlumberger 12/28/12/12

Increase Production While Saving Water, Proppant, and Time.

HiWAY* flow-channel hydraulic fracturing creates infinitely conductive pathways within the proppant pack, enhancing productivity and operational efficiency. On average, HiWAY jobs increase production 20%, use 40% less water, and consume 60% less proppant.

To date, HiWAY technology has been used in more than 10,000 stages. It has helped

- conserve over 350 million gallons of water
- save 1 billion pounds of proppant
- prevent more than 400 screenouts
- eliminate over 55,000 road journeys.

slb.com/HiWAY

Schlumberger

New Board Members 2013-2014



**SECRETARY:
DAVID FLORES**
Production Manager
Lucas Energy

David Flores has 24 years experience in engineering, management and consulting in the petroleum industry. He has extensive experience in well completions, sand control and production operations. David has completed projects in North and South America, the Gulf of Mexico, Asia and the Middle East. He has authored numerous engineering publications for the SPE and AADE. In 1988, he earned a MS in Petroleum Engineering from Texas A&M University. He has also served as the Completion and Production Study Group Chairman, Director-At-Large and Career Management Chairman for the Society of Petroleum Engineers Gulf Coast Section Board of Directors. David is also a past recipient of the SPE Production and Operations regional award.



**DIRECTOR-AT-LARGE:
DEEPAK GALA**
SME – Well Control Engineering
Shell

Deepak is the SME- Well Control Engineering at Shell and is based in Houston, TX. He has BS degree in chemical engineering from Mumbai University, a Master's degree in natural gas engineering from Texas A&M University Kingsville and a Master's degree in finance from Tulane University.

His oilfield career began in 2004 as a field engineer and then transitioning to a well-control engineer for Cudd Well Control where he gained industry experience in well-control engineering, blowout contingency plans, rig inspections, snubbing and coil-tubing operations. After joining Weatherford in 2006, he worked in air drilling, underbalanced drilling and managed-pressure drilling

operations. In 2009, he became the United States region's engineering lead, supporting the drilling hazard mitigation business unit where he helped to develop training standards, lead engineering studies, perform risk analyses on challenging wells and identify the appropriate applications. In 2011, he moved into a new role as North America Operational Excellence Manager. His added responsibilities included overseeing QHSSE teams at the district level, systems engineering, business process optimization, financials, training and competency for the drilling hazard mitigation business unit. In Q4 of 2011, he transitioned into a technical-commercial role as a Commercial Manager, where he headed the United States tender response team and acted as the point-man for multiple product line tenders. He oversaw the tender, contract execution and administration processes.

With a dedication to advancing technology in his field, he has co-authored over 15 technical publications and is an instructor of "Introduction to Underbalanced Drilling" and "Introduction to Managed Pressure Drilling" at SPE conferences. He is co-author of a chapter on underbalanced drilling in the SPE's Advanced Drilling & Well Technology textbook and is currently developing a new textbook that explores drilling hazard solutions.

His professional memberships include SPE, IADC, AADE, & CFA.



**VICE CHAIR:
JEANNE PERDUE**
Technical Writer
Occidental Petroleum,
Middle East Support Team

Jeanne Perdue is a Technical Writer at Occidental Petroleum. After earning a BS in Chemistry from SUNY at Albany, she worked as a chemist and information specialist at the Texaco Research Labs. She then became an oil journalist, working as a technical editor at Hart's E&P magazine and launching Upstream Technology magazine. Perdue has served as Scholarship Chair, Community Services Chair, Secretary and Membership Chair of the SPE Gulf Coast Section. She has received SPE service awards at the section, regional, and international levels and was instrumental in launching the SPE eLibrary and Magic Suitcase programs. Perdue was twice elected to the Alief ISD school board and now serves on the industry advisory boards of HCC's PetroTech program and the UH Petroleum Engineering Dept.



**DIRECTOR-AT-LARGE:
W. JOHN LEE**
Professor and Cullen
Distinguished University Chair
University of Houston - Petroleum
Engineering Department

John Lee is Professor of Petroleum Engineering and holder of the Cullen Distinguished University Chair at The University of Houston. John holds BS, MS and PhD degrees in chemical engineering from the Georgia Institute of Technology.

Prior to his professorship, he worked for ExxonMobil early in his career and specialized in integrated reservoir studies. He later joined the Petroleum Engineering faculty at Texas A&M and became a Regents Professor of Petroleum Engineering. While at A&M, he also served as a consultant with S.A. Holditch & Associates, where he specialized in reservoir engineering aspects of unconventional gas resources. He joined the University of Houston faculty in September 2011.

He served as an Academic Engineering Fellow with the U.S. Securities & Exchange Commission (SEC) in Washington during 2007-2008 and was a principal architect of the modernized SEC rules for reporting oil and gas reserves.

John is the author of three textbooks published by SPE and has received numerous awards from SPE including the Lucas Medal, the DeGolyer Distinguished Service Medal and Honorary Membership. He is a member of the U.S. National Academy of Engineering and the Russian Academy of Natural Sciences.



**VICE TREASURER:
LUCY KING**
Reservoir Engineer
Kinder Morgan

Lucy King is a reservoir engineer with Kinder Morgan CO2 Company, L.P. She has been responsible for SEC reserves reporting since 2004. She has over 30 years experience in reservoir engineering, financial analysis, production engineering and operations with emphasis on secondary and tertiary recovery. Prior to joining Kinder Morgan, Lucy spent seven years with Miller and Lents, Ltd. and over 15 years with Amoco Production Company. While at Amoco, she worked on all aspects of the Slaughter Field CO2 projects (pilots, project approval, implementation and start-up) and subsequently worked in West Texas for the start-up of the projects.

From 1984 through 1987, Lucy was an active member of the South Plains Section in Lubbock, TX and held most Section offices. She chaired the section in 1986-1987. In 1987, Lucy received the SPEI Young Member Outstanding Service Award. She was a long-standing member of the Gulf Coast Section General Meeting Committee serving in all positions, including chairman. In 2009, Lucy received a Section Service Award from the Gulf Coast Section. She was a 2010-2012 Director-at-Large and 2012-2013 Secretary for the Gulf Coast Section. Lucy is a member of the SPE Technical Interest Group (TIG) Coordinating Committee and has been the chair for the SPE Reservoir Management TIG since 2003.

Lucy holds a BS in chemical engineering from Tulane University. She is a member of the Society of Petroleum Evaluation Engineers (SPEE), a registered professional engineer in the State of Texas and a 30+ year member of the SPE.

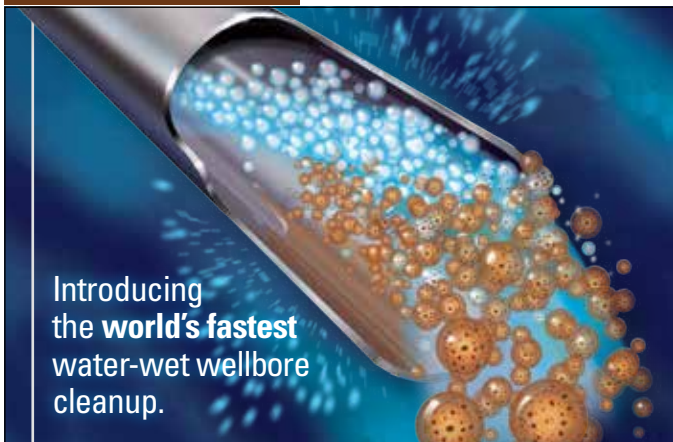


**DIRECTOR-AT-LARGE:
TREY SHAFFER**
Managing Partner
Environmental Resources Management

Mr. Trey Shaffer is a Senior Partner with Environmental Resources Management (ERM) based in Houston, Texas. Trey joined ERM in 2003. His current position is Managing Partner, Oil & Gas – North America.

For nearly 25 years, Mr. Shaffer has focused on delivering a broad range of environmental consulting and construction services to oil and gas sector clients around the world. He has had the opportunity to hold senior leadership roles in operations, client management and sector leadership functions. Mr. Shaffer is currently the Managing Partner for ERM's Oil & Gas Sector in North America and he is broadly familiar with all aspects of ERM's business. He supports clients with a variety of needs including climate change, transaction services, management systems, sustainability, impact assessment and permitting for upstream greenfield development/new construction, brownfield re-development and broad environmental and regulatory compliance.





Introducing the **world's fastest** water-wet wellbore cleanup.

The DEEPCLEAN[®] pill combines solvents and surfactants to create the world's first double emulsion cleanup pill.

The unique application of water-in-oil-in-water technology improves film removal and droplet dispersion, and can deliver water-wet tubulars with minimal contact time at lower chemical concentrations than conventional displacements.

Avoid completion NPT and future interventions, while protecting near wellbore reservoir permeability.



A Schlumberger Company

www.miswaco.slb.com

*Mark of M-I LLC

PATENTED proNova™ by TDE

DRILLING PERFORMANCE

Drilling Tracking Report

CREW PERFORMANCE MEASUREMENTS

AUTOMATIC OPERATIONS DETECTION

INVISIBLE LOST TIME DETECTION

281.755.7595
www.pronova-tde.com

TETRA Technologies, Inc.



30 Years...Providing Solutions to the Oil & Gas Industry

- Well Testing
- Frac Flow Back
- Sand Management
- Early Production Facilities
- Data Acquisition Systems
- Production Enhancement
- Wellhead Compression
- Completion Fluids
- Casing Clean-Up Tools
- Fluid Filtration Services
- Frac Water Management
- Cased-Hole Wireline Services



tetrathec.com

Focused on Energy. Dedicated to Service.

© 2010 TETRA and the TETRA logo are registered trademarks of TETRA Technologies, Inc. All Rights Reserved.

PETROFLEX LETS YOU ATTEND THESE LIVE, INSTRUCTOR-LED PETROSKILLS CLASSES FROM YOUR LOCATION- THROUGH YOUR COMPUTER!



Q1 2013 SESSIONS

RESERVOIR ENGINEERING FOR OTHER DISCIPLINES - REO / 25 Feb - 1 March

BASIC PETROLEUM TECHNOLOGY - BPT 4-8 March

PRODUCTION CHEMISTRY - OGPC 4-8 March

OVERVIEW OF THE PETROLEUM INDUSTRY - OVP / 12-13 March

RESERVOIR MANAGEMENT - RM 18-22 March

STRUCTURAL AND STRATIGRAPHIC INTERPRETATION OF DIPMETERS AND BOREHOLE-IMAGING LOGS - SSI 18-22 March

APPLIED HSE MANAGEMENT - HS28 18-22 March

GAS LIFT - GLI / 1-5 April

FOUNDATIONS OF PETROPHYSICS - FPP 1-5 April

SEISMIC VELOCITIES AND DEPTH CONVERSION - SVDC / 8-12 April

STRATEGIC THINKING: A TOOL-BASED APPROACH - STT / 9-11 April

PETROLEUM GEOCHEMISTRY: TOOLS FOR EFFECTIVE EXPLORATION AND DEVELOPMENT - MGT / 15-19 April

SHE AUDITING - A MANAGEMENT SYSTEMS APPROACH - HS47 / 15-19 April

APPLIED SEISMIC ANISOTROPY FOR FRACTURED RESERVOIR CHARACTERIZATION - ASAF 15-19 April

RESERVOIR MANAGEMENT FOR UNCONVENTIONAL RESERVOIRS - RMUR / 15-19 April



FOR MORE INFORMATION, SEE OUR WEBSITE OR CONTACT PATTY DAVIS AT PATTY.DAVIS@PETROSKILLS.COM OR (281) 433-7744

Beyond Shale Production: Infrastructure, Industry and Jobs

The first part of this presentation will present the impact of rapidly increasing shale oil and gas production and reserves on the need for new midstream energy infrastructure in the United States to handle crude oil, natural gas and natural gas liquids. Examples of several major projects that are currently underway will be cited.

The second part of the presentation will be a discussion of how the increasing production and reserves are impacting U. S. industrial growth, particularly in the petrochemical sector, but in other areas as well.

Finally, the overall impact and job creation associated with the new shale oil and gas production will be examined.

Bill Ordemann

Bill Ordemann is the Group Senior Vice President of Unregulated NGLs, Crude Oil and Natural Gas Assets of the general partner of Enterprise Products Partners L.P. He is responsible for the company's onshore and offshore natural gas and crude oil pipelines, natural gas processing and storage assets and NGL fractionation and storage facilities. Enterprise Products Partners is one of the largest publicly traded partnerships and a leading North American provider of midstream energy services.

Bill began his 31-year career with Shell's upstream exploration and production organization and held positions of increasing levels of responsibility in engineering, operations and management related to offshore and gulf coast production operations. He made the transition into midstream operations in 1995 and for the

next four years worked on developing plans and new infrastructure to handle increasing "rich" gas production from the deep water Gulf of Mexico. Bill joined Enterprise as Vice President of its general partner in connection with its purchase of certain midstream energy assets from Shell in 1999. He was elected Sr. Vice President in 2001 and continued developing midstream infrastructure, particularly in the Rocky Mountain region, until being elected as Executive Vice President and COO in 2007 with responsibilities for Enterprise's Operations, Engineering and EHS&T functions. He returned to the commercial side of the business and assumed his current role in 2012.

Bill holds a B.S. in Chemical Engineering from Virginia Tech.

Event Info

SPEAKER

Bill Ordemann
Group Senior Vice President Apache
Enterprise Products Partners L.P.

LOCATION

Petroleum Club
800 Bell Street, 43rd floor
Houston, TX 77002

EVENT CONTACT

Barry Faulkner
281-627-8790
barryfaulkner@earthlink.net

MEMBERS

\$35 before 2/13/13, \$40 after

NON-MEMBERS

\$40 before 2/13/13, \$45 after

VIKING
ENGINEERING, L.C.

- PETROLEUM CONSULTING
- HTHP WELL DESIGN
- PROJECT MANAGEMENT
- FAILURE ANALYSIS
- TRAINING

CRITICAL WELL ENGINEERING
CONSULTING SERVICES

VIKING'S TEAM OF HIGHLY TRAINED
PETROLEUM PROFESSIONALS
LEND THEIR EXPERIENCE TO
CREATIVE WELL DESIGNS.

WE CAN HELP PLAN AND
EXECUTE YOUR TOUGH WELLS.

VISIT OUR WEBSITE: WWW.VIKINGENG.NET
OR CALL: (281) 870-8455 IN HOUSTON

Rose & Associates

UCRA Course
Advanced decision analysis and resource
play assessment course

UCRA Software
To model, risk and value staged drilling in
resource plays

allisondunn@roseassoc.com

Transferring E & P Risk Assessment Expertise
Instruction • Software Tools • Practical Consultation

Waterflood

Commissioning & Startup

Materials & Corrosion

Chemical Systems Engineering

Flow Assurance

GATE
GIBSON APPLIED TECHNOLOGY & ENGINEERING LLC

16360 Park Ten Place
Suite 206
Houston, TX 77084
P (281) 398-5781
F (281) 398-0935
www.gatellc.com

New LCM that One Size Fits Many™
for Cementing/Drilling to Meet the New Requirements

particulate filter plugs

permeable foam wedge bridges

Sized Foam Wedges

Spongy Foam Filtration Material

One Size Fits Many

<p>WEDGE-SET®</p> <p>Squeeze Pills Remedial Only</p>	<p>QUIK-WEDGE™</p> <p>Mixed in Mud Preventive & Remedial</p>	<p>STRESS-SHIELD™</p> <p>GeoMechanics Based Preventive Only</p>
---	---	--

For case histories and other details, contact Max Wang at 281-450-4944 or go to www.sharp-rock.com

Sharp-Rock Technologies, Inc.

© 2012 Sharp-Rock Technologies, Inc. All rights reserved.

Directionally challenged?

If your directional drilling program is more challenging than you expected, maybe you need a new directional driller. Maybe you need Ryan Directional Services, Inc.

Ryan has experience in virtually every important oil and gas shale play. We know the potential roadblocks and how to address them before they cost you money. And that takes drilling to a new level of efficiency.

Call Ryan at 281.443.1414 and see how our directional drilling program will change your experience from challenging to rewarding.

www.nabors.com

RYAN DIRECTIONAL SERVICES, INC.
A NABORS COMPANY

RECORD-BREAKING PERFORMANCE

62 INDEPENDENTLY-TREATED STAGES WITH THE NEW **SUPER-PORT** STIMULATION SLEEVE

AVAILABLE FOR OPENHOLE, CEMENTED, AND HPHT APPLICATIONS

PEAK COMPLETIONS
INNOVATION | QUALITY | EXPERIENCE

CONTACT YOUR LOCAL PEAK REP AT 713.223.5751 OR INFO@PEAKCOMPLETIONS.COM

STUDY GROUP COMPLETIONS/PRODUCTION

Five Things You Didn't Want to Know about Hydraulic Fractures

This presentation will touch on elements from three of Mike's more popular seminars:

- Confessions of a Frac Engineer: Things I wish a geologist had taught me
- Proppant Performance: Recognizing that fractures degrade
- Refracs: When do they work and when do they fail?

We often envision fractures as if they were simple, planar features that are relatively consistent in width and durable in their flow capacity. Photographs from minebacks and core-throughs of actual fractures will be shown along with the performance implications. Our oversimplified models typically result in poorly designed completions and missed opportunities. Frequently, we blame the underperformance of a well on "poor reservoir quality" instead of correctly recognizing the inadequacy of our created fractures.

Mike has recently written two large papers summarizing the refrac results from more than 140 published restimulation studies. He will only have time to touch on refrac issues during this presentation but promises to share some refrac thoughts and references.

Mike Vincent

Mike Vincent is a consulting engineer with more than 20 years of experience in economic optimization of hydraulic fractures. After completing his degree at the Colorado School of Mines, he worked with Amoco in Denver and with ARCO in Anchorage, Kuparuk and Denver. Mike started Insight Consulting in 1996, specializing in fracture design and reservoir analyses. Mike has also provided technical support to CARBO Ceramics since 1997, allowing him to analyze frac treatments in reservoirs around the world. He has written more than 25 technical papers, has been awarded two patents and has instructed more than 100 seminars on fluid flow, fracture design and practical production optimization. Mike frequently lectures at universities and presents fracturing schools to numerous companies and organizations. He recently served as a Distinguished Lecturer and Distinguished Author for SPE.

WEDS
February 27

11:30 AM TO 1:00 PM



Event Info

SPEAKER

Mike Vincent
President
Insight Consulting

LOCATION

Greenspoint Club
16925 Northchase Drive
Houston, TX 77060

EVENT CONTACT

Jonathan Godwin
281-921-6526
jgodwin@carboceramics.com

MEMBERS

\$35 Pre-Registered / \$40 Walk-In

NON-MEMBERS

\$35 Pre-Registered / \$40 Walk-In

STUDY GROUP DIGITAL ENERGY

LOCATION

Courtyard on St. James
1885 St. James Pl
Houston, TX 77056

EVENT CONTACT

Carol Piovesan
949-232-6353
chrobon@yahoo.com

Digital Energy Study Group Meeting

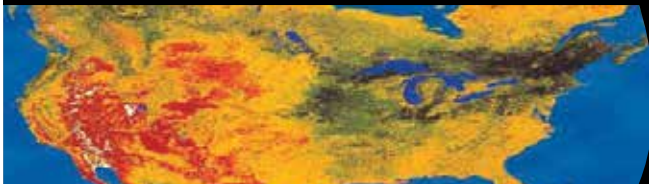
The speaker for the February 20th Digital Energy Study Group luncheon will be announced at a later date. Please check your emails for a meeting announcement from the Digital Energy Study Group. If you have any questions, feel free to contact Carol Piovesan.

WEDS
February 20

11:30 AM TO 1:00 PM

PHDWIN™

Integrated Economics & Decline Curve Software



EVEN MORE POWERFUL WITH

PHDRMS™

**Intuitive Interface
Affordably Priced
60-Day Money-back Guarantee**

Schedule an **online presentation**
TODAY!

POWERFUL FLEXIBLE SECURE

TRC CONSULTANTS, LC
888.248.8062 | www.phdwin.com

Control With Confidence

Engineered Prevention, Response & Results

Whether onshore, offshore or underground, Cudd Well Control has complete solutions for well planning and intervention. As a Qualified Third Party, we provide the necessary oversight to help you meet NTL-05 and NTL-06 requirements. Our team of engineering experts will assist you with a wide range of services, from rig inspections and blowout contingency planning, to specialized training and modeling. With a proven track record of success confronting blowouts and problem wells in any environment, Cudd Well Control is the preferred choice.

Well Control Services:

- Oil Well Firefighters and Blowout Specialists
- Well Control & Kick Resolution
- Underground Blowouts
- Dry Ice/Cryogenic Freeze Services
- Hot Tap and Valve Drilling Services
- Engineering Services
- Rig Inspections
- Drilling Plan Enhancements
- Blowout Contingency Planning
- Specialized Training
- Relief Wells
- Kick Modeling
- Gas Dispersion Modeling
- BOEMRE Compliance



www.cuddwellcontrol.com • +1.713.849.2769

Reel Simple



Fiberspar LinePipe™ is the lower cost alternative to welded steel or stick fiberglass for in-field gathering or injection systems. Just unreel it and go.

- » 20% lower total installed costs than welded steel
- » Installs in half the time
- » Fewer people and less equipment means a safer installation
- » No corrosion, ever
- » Field proven: over 15,000 oil and gas wells and 450 North American operators

Reel after reel, you'll reduce installed and operating costs, safety risks and construction time with Fiberspar LinePipe. Call Jim Chartier at 281.797.4166 or email jchartier@fiberspar.com.

FIBERSPAR® THE LEADER IN SPOOLABLE PIPELINE SYSTEMS WWW.FIBERSPAR.COM

API Q1, ISO 9001:2008, ISO/TS 29001 registered.
© 2012 Fiberspar Corporation. Fiberspar and LinePipe are marks of Fiberspar Corporation. (FBS1263-1/0812/spegc)



PROCESS IMPROVEMENT

MAXOIL IS A GLOBAL CONSULTANCY WITH A PROVEN TRACK RECORD IN ENHANCING OIL AND GAS PRODUCTION. ASSET AND FIXED OPERATIONAL EFFICIENCY



- Gas Treatment
- Fluids Separation
- Produced Water Management
- Trouble Shooting
- Debottlenecking
- Process Engineering
- Flow Assurance
- Advanced Diagnostics
- Production Chemistry

MATURE ASSET OR NEW DEVELOPMENT -
PROCESS OPTIMIZATION VIA A HOLISTIC APPROACH

Team of Industry Specialists
Practical Cost Effective Solutions
Objective Technical Assessments
Application of Operational Expertise



contact@maxoilsolutions.com • www.maxoilsolutions.com
ABERDEEN | LONDON | HOUSTON | STAVANGER | KUALA LUMPUR | PERTH

TUES
February
12

11:30 AM TO 1:00 PM

STUDY GROUP NORTHSIDE

Unconventional Wisdom in Shale Oil/Gas Completions & Microseismics Interpretation

65 years have passed since the first hydraulic fracture treatment in the Hugoton Field. However, the now mature hydraulic fracturing technology for conventional plays has proven to be insufficient when applied to the extremely low permeability, fractured formations common to the unconventional plays under development today. To address this, the industry has turned to newer technologies, like microseismic monitoring, and to common practices like data mining but still, many of the completion designs for unconventional developments are generated in a trial-and-error fashion. Because of this, as well as the lack of predictive tools, empirical 'wisdom' has emerged such as the concepts of 'complexity,' 'brittleness,' 'fracability,' and 'Stimulated Reservoir Volume' (SRV).

The presentation will focus on the role of geomechanics in understanding the fundamental physics behind the stimulation of fractured, unconventional plays. Moreover, the geomechanical foundations, or lack thereof, for the common empirical 'wisdom' for the completion of unconventional plays will be reviewed including the geomechanical significance of microseismicity. The presentation will also focus on the application of the new numerical techniques that overcome the limitations of pseudo-3D models for stimulation design in unconventional plays.

Marisela Sanchez-Nagel

Dr. Sanchez-Nagel is currently General Manager and Principal Engineer with Itasca Houston. She has more than 20 years of oil and gas industry experience in geomechanics for near-wellbore and reservoir geomechanics applications. She started her career at Intevp, the technology center of PDVSA, in Venezuela and worked there for 15 years. She then became president of Global GeoSolutions, an independent geomechanics consulting company in Latin America. Sanchez-Nagel later worked for GMI for two years before coming to Itasca Houston as General Manager in 2007. Dr. Sanchez-Nagel has worked on many geomechanical projects around the world, has presented at numerous geomechanics schools throughout North and South America, is on the 2013 ARMA Program Committee and is currently serving as a 2012-2013 SPE Distinguished Lecturer.



Event Info

SPEAKER

Marisela Sanchez-Nagel
General Manager and Principal
Itasca

LOCATION

Greenspoint Club
16925 Northchase Drive
Houston, TX 77060

EVENT CONTACT

Curtis Smith
832-523-1213
curtissmith@nobleenergyinc.com

MEMBERS

\$35

NON-MEMBERS

\$40



Compass Directional Guidance, Inc.
Manufacturer & Supplier of
MWD & LWD Systems, Including EM & Resistivity

14427 Interdrive West
Houston, TX 77032
832-554-2474
www.compass-mwd.com



Ready to ship kits, full fleet maintenance & 24/7 support

Parts sales, now made easier via our online store

Shop technician & field operator training, at our facility or yours

Scan the QR code for more information

Advanced Ceramics Make the Difference



Breakthrough sand control technology



Innovative thrust bearings

(714) 384-9488 www.petroceram.com



SOCIETY OF PETROLEUM ENGINEERS HYDRAULIC FRACTURING TECHNOLOGY CONFERENCE FEB 4-6, 2013

The SPE Hydraulic Fracturing Technology Conference is an important event for our industry. Focusing on the enabling technology for the development of vast unconventional resources, this conference leads the way for information and demonstrations on hydraulic fracturing. It features a dynamic combination of keynote addresses, technical presentations, and networking and exhibiting opportunities.

VENUE

The Woodlands Waterway Marriott Hotel & Convention Center
1601 Lake Robbins Drive
The Woodlands, Texas 77380
Phone: 281.367.9797

INFORMATION & REGISTRATION

<http://www.spe.org/events/hftc/2013/>

SOCIETY OF PETROLEUM ENGINEERS RESERVOIR SIMULATION SYMPOSIUM FEB 18 -20, 2013

The SPE Reservoir Simulation Symposium offers engineers and scientists the chance to see and discuss leading-edge technologies and applications in reservoir simulation. It also provides an unparalleled opportunity to network with other technical professionals in the field.

WHO SHOULD ATTEND

- Reservoir Engineers
- Research Engineers
- Petroleum Engineers
- Scientists
- Geologists/Geoscientists
- Managers and Supervisors
- Executives
- Educators and Students
- Consultants

VENUE

The Woodlands Waterway Marriott Hotel & Convention Center
1601 Lake Robbins Drive
The Woodlands, Texas 77380
Phone: 281.367.9797

INFORMATION & REGISTRATION

<http://www.spe.org/events/rss/2013/>



FREECAP® SWELLABLE PACKER

40,000 swellable packers sold

99.9% success rate

575°F (302°C) maximum temperature (FREECAP GT)

8 standard polymer blends

4 top challenges: cement integrity, multi-stage fracturing, zonal isolation, SAGD applications

1 proven solution

Think all swellable packers are alike? Numbers tell a different story. For ensuring cement integrity and optimizing multi-stage completions, FREECAP® swellable packers are chosen by operators who know that packer performance matters. Add our exceptional customer service and deliveries that can help you plan your wells on a tight timeline, and the advantages really add up. Isn't it time you made FREECAP® swellable packers your No. 1 choice?


TAM INTERNATIONAL
Inflatable and Swellable Packers

PERFORMANCE MATTERS.

www.tamintl.com/performancematters

Integrated Energy Services, Inc.

Robert Barba
Petrophysicist

Log Analysis
Completion Optimization

500 N. Capital of TX Hwy
Building 4-150
Austin, TX 78746
C: (713) 823-8602
F: (713) 583-9400
RBarba75@gmail.com

www.integrated-energy-services.com

 **Pegasus Vertex, Inc.**

MUDPRO
Drilling Mud Reporting

713-981-5558
sales@pvicom.com
www.pvicom.com



Wolfcamp Shale in the Permian Basin

The Wolfcamp Shale in southern Midland Basin is a world-class source rock located in peak oil generation and early gas generation window. Its storage space includes matrix porosity, natural fractures and organic materials. The mineral composition and lithology are similar to the Eagle Ford Shale, with a high density of natural fractures. The oil and gas in place is estimated to be more than 100 MMBoe per section of 640 acres. Due to the extent of Wolfcamp Shale coverage, it could potentially become one of the largest hydrocarbon discoveries in U.S. This talk will discuss discovery, pilot evaluation and potential development concept associated with Wolfcamp oil shale resource play.

J. Ross Craft

J. Ross Craft has served as President and Chief Executive Officer since the formation of Approach Resources in September, 2002. Prior to forming Approach Resources, Mr. Craft co-founded Athanor Resources Inc. in 1998 and was the Executive Vice President until its merger with Nuevo Energy Company in September, 2002. Mr. Craft has more than 30 years of experience in the oil and gas industry and holds a B.S. in Petroleum Engineering from Texas A&M University. Mr. Craft is also an Eagle Scout.



Event Info

SPEAKER

*J. Ross Craft
President
Approach Resources, Inc.*

LOCATION

*Norris Conference Center
9990 Richmond Ave,
South Bldg, Suite 102
Houston, TX 77042*

EVENT CONTACT

*Amy Timmons
713-836-6563
amy.timmons@weatherford.com*

MEMBERS

\$35 before 2/15/13, \$40 after

NON-MEMBERS

\$40 before 2/15/13, \$45 after

INTEGRATED PRODUCTION SERVICES

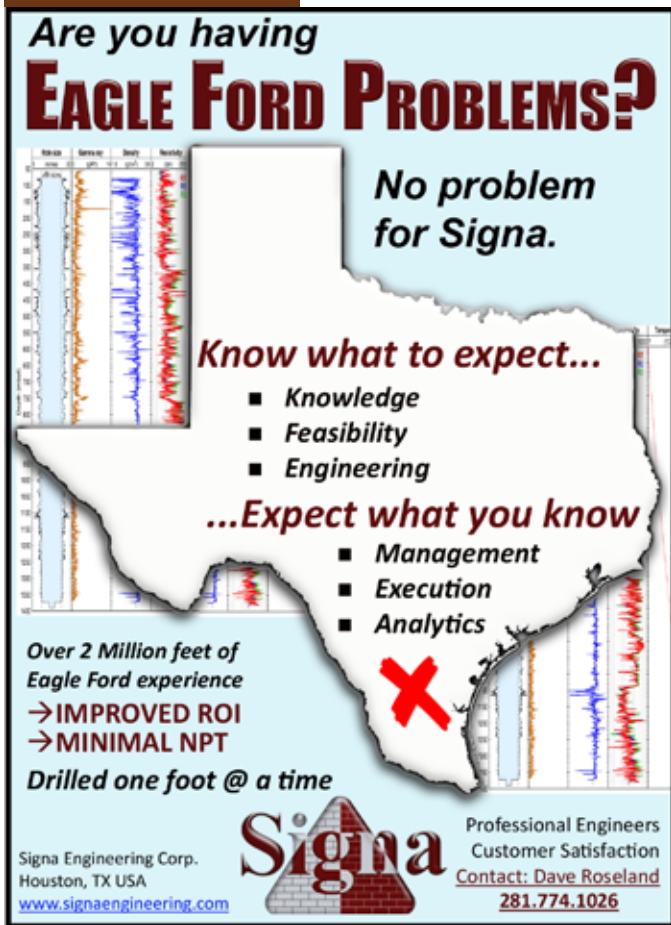


Coiled Tubing & Nitrogen
Eline & Slickline
Snubbing
Plunger & Gas Lift
Flowback & Production Testing
Pressure Testing & Nipple Up-Down

www.ipsadvantage.com

www.tiwtools.com
DRILLING AND COMPLETION SOLUTIONS

Are you having
EAGLE FORD PROBLEMS?



No problem for Signa.

Know what to expect...

- Knowledge
- Feasibility
- Engineering

...Expect what you know

- Management
- Execution
- Analytics

Over 2 Million feet of Eagle Ford experience
 → IMPROVED ROI
 → MINIMAL NPT
 Drilled one foot @ a time

Signa Professional Engineers
 Customer Satisfaction
 Contact: Dave Roseland
 281.774.1026

Signa Engineering Corp.
 Houston, TX USA
 www.signaengineering.com

FMC Technologies

**More uptime.
 More fracturing.**



We put you first.
 And keep you ahead.
 www.fmctechnologies.com

Engineers - need technical document development help?

- Drilling & completion programs
- Engineering reports & specifications
- Manuals & instructions
- Printing, binding & publication



ZAETRIC®
 www.zaetric.com
 713-621-4885
 inquiries@zaetric.com

Innovative Proppant Technology



OilPlus PROPPANTS

New OilPlus™ Proppants Provide Enhanced Oil Recovery for Your Well.

E-mail us at info@momentive.com **MOMENTIVE**

NES
 NAVIGATE ENERGY SERVICES

Leaders in unmanned MWD technology
 Survey While Drilling for wireline gyro replacement
 High Temp 185°C MWD with Gamma
 Houston – Lafayette – Permian Basin – Denver

www.navigateenergy.com
 832.300.0030
 info@navigateenergy.com



MOST VERSATILE PIPELINE

Proudly modernizing pipelines. Again.

FLEPIPE SYSTEMS
 A SHAWCOR COMPANY

www.flexpipesystems.com
www.shawcor.com

Spatial Data Management – Science and Application

This presentation will describe the scientific basis of maps used in support of exploration and production and then show some examples of what happens when these sciences are misunderstood or ignored during collection of and data entry into our projects, applications and databases.

Jonathan Stigant

Jonathan Stigant graduated with a B.Sc in Engineering Science from the University of Durham. He spent 11 years in the Royal Navy, six as a hydrographic surveyor. In 1981, Jonathan emigrated to Houston, Texas and has spent 30 + years working for a wide range of companies including Chevron for 14 years and Devon Energy for five years. He now works as an independent consultant providing training and geospatial quality management to a variety of oil and gas operators worldwide. Jonathan has made numerous presentations and lunch and learns. His talks provide a hard-hitting, as well as humorous, focus on a foundational technology.

Event Info

SPEAKER

*Jonathan Stigant
President
Stigant Enterprises Inc.*

LOCATION

*Sheraton Brookhollow
3000 North Loop West
Houston, TX 77092*

EVENT CONTACT

*Marci Nickerson
marci.nick@gmail.com*

MEMBERS

\$38 before 2/6/13, \$48 after

NON-MEMBERS

\$38 before 2/6/13, \$48 after



Oilwell Guidance, LLC
14427 Interdrive West, Houston, TX 77032
832-554-2477 oilwellguidance.com

**MWD & LWD Services & Personnel
Mud Pulse, EM & Resistivity Technology**



- Proven, reliable Positive Pulse MWD technology, for directional-only or directional + gamma
- Fully-trained on-site support personnel
- Complete fleet maintenance programs with QA systems



ppitech.net (713) 464-2200

Engineering and Construction Services

Right of Way • Pipelines • Foundations
Engineering • Design



**PPI
Engineering &
Construction Services LLC**

ARE YOU IN THE KNOW ABOUT
FLOW ASSURANCE?

WANT YOUR OFFSHORE
OPERATIONS TO BE
ON TARGET?

LOOKING FOR THE PLACE TO BE
WHEN IT COMES TO
SUBSEA?

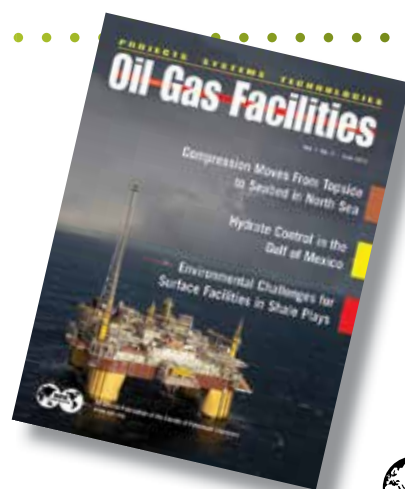
Oil and Gas Facilities

**The best magazine for projects, facilities,
and construction professionals.**

Subscribe today!

Get a one-year subscription for only USD 39*

www.spe.org/go/ogfsignup



*Not an SPE member? Get special savings when you join SPE.

Official publication of the Society of Petroleum Engineers

Accelerating Technology Development through Investment in Young Companies with Exciting Technology

Statoil Technology Invest (STI) is looking for young companies with exciting technology that will improve the effectiveness of Statoil's oil and gas or renewables operations. By making equity investments and having active participation on the boards, we help management accelerate their company's development so as to become profitable and independent suppliers to Statoil and the rest of the energy industry. STI forms a central part of Statoil's Technology Commercialization unit, which also runs Statoil's LOOP program in Norway and UK. STI works with suppliers to fund new product developments required by our operations. Our portfolio consists of circa 20 equity investments and 20 LOOP projects, and we are actively looking for new investments.

Ingebrigt Masvie

Ingebrigt Masvie serves as an investment manager with Statoil Technology Invest, the corporate technology venture unit of Statoil, an international energy company with operations in 37 countries and headquartered in Norway. Ingebrigt has been serving on the boards of directors for several Statoil Technology Invest portfolio companies: Marine Cybernetics, Ocean Riser Systems, Navita, Ocean Saver and Statoil GTL. Having earned his Masters of Science in Engineering Cybernetics at the Norwegian

University of Science and Technology, Ingebrigt started out his career as a research engineer with the Norwegian classification society Det Norske Veritas. After obtaining his MBA from UNC Chapel Hill in 1995, Ingebrigt joined PA Consulting as a management consultant before moving to the technology venture investment business, first with Venturos and since 2006, with Statoil Technology Invest. In addition to his MSc and MBA, Ingebrigt holds an advanced degree in Russian language.

Event Info

SPEAKER

Ingebrigt Masvie
Investment Manager
Statoil

LOCATION

Norris Conference Center
9990 Richmond Ave,
South Bldg, Suite 102
Houston, TX 77042

EVENT CONTACT

Skip Davis
281-359-8556
skdavis100@gmail.com

MEMBERS

\$35 before 2/1/13, \$40 after

NON-MEMBERS

\$40 before 2/1/13, \$45 after

DIRECTIONAL
AND
HORIZONTAL
DRILLING
SPECIALISTS



WWW.NOVADIRECTIONAL.COM

NITROGEN ✦ WELL TEST ✦ WIRELINE
WELL OPTIMIZATION
CONSULTING ✦ FLARESTACK
PRODUCTION SERVICES



www.priorityenergyllc.com

877-317-7467

COMMITTED TO SAFETY

Measured Solutions from
The Completion Diagnostics Company

Fracture performance?

With ProTechnics combined spectral and production imaging services you can directly measure:

- Fracture effectiveness
- Wellbore connectivity
- Production allocation
- Water production problems
- Stage production contribution
- After-frac production baseline

COMPLETION
PROFILER®



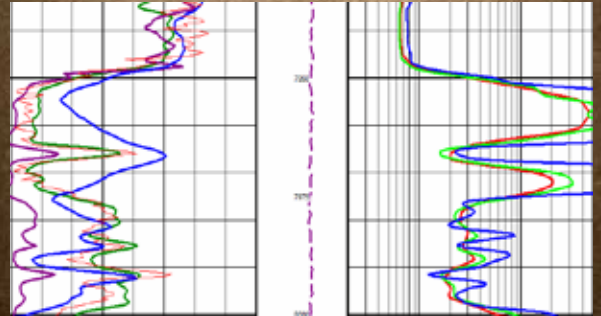
ProTechnics

A Production Enhancement division of Core Laboratories

www.corelab.com/protechnics 713-328-2320



TGS DELIVERS LAS PLUS



More than just your standard LAS.

LAS Plus upgrades the standard LAS to a full curve suite, including all available gamma ray, spontaneous potential, caliper, resistivity, conductivity, sonic, density, density correction, neutron, tension and rate of penetration curves. This data has been closely examined for standardization and quality assurance and is ready for cross-section, formation evaluation and petrophysical analysis.

Access LAS Plus data quickly and easily through the online well data portal, LOG-LINE Plus®!

Learn more at WWW.TGS.COM



1 SOURCE

FOR TOTAL WATER MANAGEMENT

SELECT ENERGY SERVICES
selectenergyservices.com

A FULL SERVICE WELL TESTING COMPANY

- Well Testing Services
- Frac Flow Back and Well Clean-up
- Drill Stem Testing (DST)
- Perforating Services
- Subsea Intervention/Landing String Assemblies
- Pipe Line Services
- Wireline
- Water Treatment

www.pts-technology.com
281-498-7399

Analytical Waterflood Surveillance and Optimization

There are numerous published analytical and simulation methods for the design of waterfloods; however, the literature has, to an extent, been silent on reservoir surveillance to help monitor and improve existing waterfloods.

This talk will focus on the general reservoir engineering workflow used to conduct surveillance and analyze waterflood performance. This will be done by conducting analytical waterflood diagnostics and optimization potential on real waterflood case studies. After examining waterflood diagnostics at a field/reservoir level, the concept of communication analysis will be introduced at a pattern/individual well level to specifically pinpoint areas with upside potential (water cycling/channeling, poor communication, etc) where techniques such as gel treatments and pattern reconfigurations would be ideal.

Over the last few years, the author has been involved in designing and implementing waterfloods in tight oil reservoirs, such as the Bakken, using multi-stage horizontal producers and injectors. The upside potential of waterflooding these tight reservoirs and the key parameters to consider will be presented using simulation data as well as actual field results.

Kerry Sandhu

Kerry Sandhu, General Manager (Canada) at Gaffney, Cline & Associates, a division of Baker Hughes, has worked on numerous reservoir characterization/reservoir simulation projects both locally and internationally. He graduated with distinction from the University of Calgary with a B.Sc. in Oil and Gas Engineering. He has worked as a reservoir engineer for 11 years where, in addition to co-authoring several technical papers, he has worked on various reservoir engineering studies including projects focused on tight oil reservoirs, waterflooding, CO₂ immiscible/miscible flooding, naturally fractured reservoirs, offshore waterflooding of reservoirs, heavy oil waterflooding, thermal simulation (SAGD, CSS, and steam flooding) and horizontal multi-stage frac optimization. He is a registered professional engineer in Alberta and is a member of both SPE and APEGGA.



Event Info

SPEAKER

Kerry Sandhu
General Manager - Canada
Gaffney, Cline & Associates

LOCATION

Courtyard on St. James
1885 Saint James Place
Houston, TX 77056

EVENT CONTACT

Jim Honefenger
281-584-0363
jimhone@aol.com

MEMBERS

\$35 Pre-Registered / \$45 Walk-in

NON-MEMBERS

\$40 Pre-Registered / \$45 Walk-in



DRILLING, FIREFIGHTING AND BLOWOUT SPECIALISTS

Neal Adams Services

A Proud Tradition of Well Control Excellence

Neal Adams
PhD, P.E.

Professional Services
Well Control Advisory Services, Relief Wells, Capping,
Contingency Planning, Safety

16434 De Lozier Street Tel: 713-849-4323
Houston, Texas 77040 Fax: 713-849-1943
E-mail: nealadams@comcast.net Cell: 713-817-6013



13800 Westfair East Drive
Houston, TX 77041-1101
Phone: 281.955.2900
www.stress.com

Engineering Problem Solvers



DESIGN • ANALYSIS • TESTING

www.**GeoSteering**.com

Specialists in geosteering with LWD

Real-time and 24 / 7

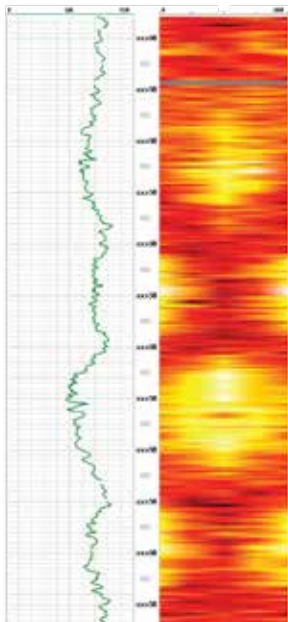
GR to Quad-Combo
Image Interpretation
Resistivity Modeling

USA

Bakken & Three Forks,
Niobrara, Eagleford,
Granite Wash, Woodbine,
Permian, Haynesville,
Barnett, Woodford, etc

International

Middle East, Europe, Latin
America, China etc.



Real-time Log from Eagle Ford Geosteering Job

281-573-0500
info@geosteering.com

PREMIER INDUSTRY EVENTS DEVOTED TO
RAPIDLY EMERGING TECHNOLOGY

MPUR

Houston, May 9th

We are pleased to announce that the annual Multiphase Pump User Roundtable (MPUR) is celebrating it's 15th anniversary in 2013!

MPUR fosters the sharing of emergent ideas in multiphase pumping and provides a focus on topics such as Subsea, Heavy Oil and Facility Minimization in Shale Gas/Oil Developments.

Find out more at www.mpur.org

Learn about our other events:
www.petroleumetc.com

STIMULATION MONITORING

To get the most out of every frac, real-time near- and far-field monitoring is a winning combination.

In unconventional plays, you're challenged by how to make more oil or gas while reducing costs and meeting environmental parameters. Halliburton has the solution: distributed temperature sensing—used in conjunction with microseismic fracture mapping—that gives operators the ability to make adjustments during a treatment to help assure every planned zone is treated.

What's *your* stimulation monitoring challenge?
For solutions, visit www.pinntech.com

Solving challenges.™

Pinnacle
A HALLIBURTON SERVICE

© 2013 Halliburton. All rights reserved.

A Look Back at Eagle Ford Completion Trends

This presentation will examine the completion trends in several of the most active counties in the Eagle Ford play. More specifically, it will summarize drilling permits issued, completion trends and proppant usage across four counties. It will also include completion results for five key counties: La Salle, Karnes, Milam, DeWitt and Dimmit. Together, these counties accounted for 65% of the 1000+ Eagle Ford completions performed in October 2012. These completion results and completion trends should prove useful to operators and service companies that plan to be active in the Eagle Ford play in 2013 and beyond.

Todd Bush

Todd Bush founded Energent Group to provide upstream market research and intelligence through data compilations and related services. He is actively engaged with operators and oilfield service companies to extract and compile industry trends from public and proprietary data. He received his BBA in Information & Operations Management from Texas A&M and his MBA from the Rice University Jones School of Management.

Event Info

SPEAKER

Todd Bush
Founder
Energent Group

LOCATION

Norris Center - Westchase
9990 Richmond Ave.,
South Bldg., Suite 102
Houston, TX 77042

EVENT CONTACT

Alex McCoy
713-366-5653
alexander_mccoy@oxy.com

MEMBERS

\$35 before 2/18/13, \$40 after

NON-MEMBERS

\$40 before 1/18/13, \$40 after

Polar Star 

Oilfield Consultants
Guiding your projects along the right path

Call us for help with:

Downhole equipment designs
Completion design development
Equipment selection

Marketing plans
Sales collateral
Sales promotion

Contact: James Garner

Phone: (281) 797-5186

Fax: (281) 485-7078

P.O. Box 3462, Pearland, TX 77588

Email: james.garner@polarstarconsultants.com

Web Site: www.polarstarconsultants.com



Vibration Technology, Inc.
Workover □ Completions □ Drilling

Leading the industry in stuck pipe recovery.

Shreveport □ New Iberia □ Houston

For more information, log on to:
vibrationtechnology.com

INNOVATIVE TECHNOLOGY FOR REMOVING STUCK TUBULARS



Slider
Automated Directional Drilling

IMPROVE YOUR HORIZONTALS

- ✓ ON-BOTTOM TOOL FACE ORIENTATION
- ✓ INCREASED MOTOR LIFE
- ✓ INCREASED ROP & HORIZONTAL REACH CAPABILITY
- ✓ ELIMINATES ORIENTATION TIME LOSSES

www.slb.com 

COMMITTEE YOUNG PROFESSIONALS

2013 SPE-GCS Young Engineer of the Year

Valerie Walker Martone



The Society of Petroleum Engineers Gulf Coast Section (SPE GCS) is pleased to select Valerie Walker Martone as the 2013 Young Engineer of the Year. Valerie is currently a Senior Upstream Operations Engineer at Anadarko Petroleum Corporation for the Mozambique LNG project, Anadarko's largest natural gas discovery to date. Previously, she worked in the deep water Gulf of Mexico division as a Senior Production Engineer for the following eastern gulf assets: Independence Hub, Neptune, Blind Faith and Pompano. In 2011, Valerie was presented Anadarko's Innovators Award for developing a new procedure that saved millions of dollars in potential lost production. Before joining Anadarko, Valerie worked at BHP Billiton in the facilities, production and reservoir engineering disciplines on their Shenzi, Atlantis, Neptune, Mad Dog, Mustang, Starlifter and West Cameron 76 assets in the Gulf of Mexico shelf and deep waters. She also is one of the founders of their Young Professionals Organization.

Valerie graduated from Texas A&M University in 2004 with a Bachelors of Science Degree in Mechanical Engineering with numerous honors including Pi Tau Sigma (National Mechanical Engineering Honor Society), Dean's List and National Collegiate Honors while being active in her sorority, Kappa Delta. Valerie enjoys engineering for its challenges and creative problem solving while collaborating with others. Valerie's hobbies include painting,

playing her violin in the church orchestra, Aggie sporting events, golfing, traveling the world, reading and especially spending time with her family.

Valerie's accomplishment will be published in the Houston Business Journal and she will receive her award at the Young Engineer of the Year Banquet.

SOCIETY OF PETROLEUM ENGINEERS GULF COAST SECTION EXECUTIVE CLUB WINNERS

Congratulations To Our Winners!

PLATINUM MEMBER

Todd Janik
Wins a \$100 Gift Card



GOLD MEMBER

Kari Wexler
Wins a \$75 Gift Card



SILVER MEMBER

Jonathan Benedict
Wins a \$50 Gift Card

NOW REPRESENT YOUR COMPANY AND SCHOOL.

The Executive Club is expanding to help recognize the companies and universities that support our members. Look for more details soon.

Email Carlos Fernandez to find out more about the Executive Club!

carlos.f.fernandez@exxonmobil.com

COMMITTEE EDUCATION

2013-2014 SPE-GCS SCHOLARSHIP

Renewable yearly scholarship (\$1,500/semester, \$3,000/academic year) up to 4 years:

- Eligibility for renewal is dependent upon maintaining a GPA of at least 3.0, majoring in engineering, and pursuing a career in the Oil & Gas industry

The requirements for first time applicants:

- Currently reside in Houston OR 29-county Gulf Coast area
- Enroll in an engineering or science program at a university in the Fall
- Currently be a high school senior
- Minimum SAT score of 1650
- Short essay (approx. 500 words)
- High school academic record
- Activities, awards and honors
- SAT and/or ACT score
- Professional Reference letters
- Financial need (if applicable, not required)
- Be a U. S. citizen

The process:

- Scholarship committee reviews each application
- Selected applicants are interviewed in the second round (April 2013)
- After the interviews, the scholarship committee meets and collectively decides the 2013-14 scholarship recipients (May 2013)

NOTE: Each 2013-14 first-time scholarship recipient may be eligible for a summer internship with an oil & gas company on availability

Information

TO APPLY

Log on to the SPE Gulf Coast Section homepage and select the Scholarship/Internship committee page. A link to instructions and the online application are located in the center.

QUESTIONS

gcs-scholarship@spemail.org

INSTRUCTIONS & APPLICATION

<http://spegcs.org/scholarship-app/instructons/>

DEADLINE

Complete scholarship form by 2/13/2013

Broaden your expertise.



NExT oil and gas training and career development instructs more than 10,000 E&P professionals every year.

With hands-on mentoring and coaching, at a Schlumberger training facility or on the job, NExT training can help you expand your technical expertise.

To view our full list of courses and to enroll, visit www.NExTtraining.net

Featured Course—Geological Field Trip

Fluvial and Deltaic Architecture and
Advanced Modeling using Petrel Software
May 10–17, 2013
Utah and Colorado, USA

NExT
A Schlumberger Company

COMMITTEE AUXILIARY

AUXILIARY FEBRUARY ACTIVITIES

DATE

Friday, February 8, 2013
11:00 AM

DEADLINE

Tuesday, February 5, 2013

COST

\$32 (Checks Only, Please)

LOCATION

McCormick and Schmick's Seafood Restaurant
1151-01 Uptown Park Blvd. 77056
713-840-7900

CONTACT

Nancy Hill
281-809-5515
nancyhill2444@sbcglobal.net

Evelyn Earlougher

281-419-1328
earlougher@comcast.net

SPE GULF COAST SECTION DIRECTORY

Your guide to your organization leaders

Officers

CHAIR

Steve Baumgartner, Marathon Oil Corp.
281-435-0264
sbaumgartner@marathonoil.com

VICE-CHAIR

Mike Strathman, The Trinity Group, Inc.
713-614-6227
mike-strathman@att.net

SECRETARY

Lucy King, Kinder Morgan CO₂ Company
713-369-9017
lucy_king@kindermorgan.com

TREASURER

Robert Bruant, Jr., BP America, Inc.
281-366-2157
Robert.Bruant@bp.com

VICE TREASURER (ADHOC)

David Tumino, Murphy Oil
281-717-5123
tuminospe@hal-pc.org

CAREER MANAGEMENT

David Flores, Lucas Energy, Inc.
713-528-1881
dflores@lucasenergy.com

COMMUNICATIONS

Valerie Martone, Anadarko
832-636-3196
valerie.martone@anadarko.com

COMMUNITY SERVICES

Xuan (Sun) VandeBerg Harris, Consultant
832-444-5143
xuan.harris@gmail.com

EDUCATION

Gabrielle Guerre, RyderScott
713-750-5491
gabrielle_guerre@ryderscott.com

MEMBERSHIP

Jeanne Perdue, Occidental Oil and Gas
713-215-7348
jeanne_perdue@oxy.com

PAST CHAIR

Hiep Vu, Kosmos Energy
214-593-5095
hvu@kosmosenergy.com

PROGRAMS

David Tumino, Murphy Oil
281-717-5123
tuminospe@hal-pc.org

SOCIAL ACTIVITIES

Scott McLean, Express Energy Services
281-772-4927
smclean@eeslp.com

TECHNOLOGY TRANSFER

Russ Neuschaefer, Schlumberger
281-285-1775
rneuschaefer@slb.com

YOUNG PROFESSIONALS

Sandeep Pedam, ConocoPhillips
713-591-5738
sandeep.pedam@conocophillips.com

DIRECTOR 2012-14

Alex McCoy, Occidental Oil and Gas
713-366-5653
alexander_mccoy@oxy.com

Kevin Renfro, Anadarko

832-636-8613
kevin.renfro@anadarko.com

Wolfgang Deeg, Shell

281-544-8279
wjfdeeg@spemail.org

DIRECTOR 2011-13

Jeff Whittaker, Welltec
281-398-9355
jwhittaker@welltec.com

Marise Mikulis, Baker Hughes, Inc.

281-275-7288
marise.mikulis@bakerhughes.com

Steve Turk, Weatherford

281-260-1300
stephen.turk@weatherford.com

SPE GULF COAST NORTH AMERICA REGIONAL DIRECTOR

Bryant Mueller, Aclaro Softworks, Inc
713-781-2000 x 300
bryant.mueller@aclaro.com

Committee Chairs

AWARDS

James Rodgerson, BP
281-221-4085
james.rodgerson@bp.com

CONTINUING EDUCATION

Dorian Hicks, Rice University
713-444-3230
dth1@rice.edu

ESP WORKSHOP

John Patterson, ConocoPhillips
281-221-5298
john.c.patterson@conocophillips.com

GOLF

Cameron Conway, Cactus Pipe
281-217-0660
cconway@cactuspipe.com

INTERNSHIPS

Gabrielle Guerre, Ryder Scott
713-750-5491
gabrielle_guerre@ryderscott.com

MAGIC SUITCASE

Sean K. O'Brien, Chevron
832-854-3660
sean.obrien@chevron.com

NEWSLETTER

Kim Tran, Energy XXI
713-826-7492
editor@spegcs.org

SCHOLARSHIP

Tanhee Galindo, BASF
713-428-4919
tanhee.galindo@basf.com

SPORTING CLAYS

Tim Riggs, Inwell Directional Drilling
713-201-4290
tim.riggs@inwell.com

TENNIS

Bob Fu, BP
713-591-9808
bob.fu@bp.com

WEB TECHNOLOGY

Subash Kannan, Anadarko
713-385-7242
subash_kannan@yahoo.com

SECTION MANAGER

Kathy MacLennan, SPE-GCS
713-779-9595 x 813
kmaclennan@spe.org

Study Group Chairs

BUSINESS DEVELOPMENT

Steve Mullican, Grenadier Energy Partners
281-907-4120
smullican@grenadierenergy.com

COMPLETIONS & PRODUCTION

Mark Chapman, CARBO Ceramics
281-921-6522
mark.chapman@carboceramics.com

DIGITAL ENERGY

Carol Piovesan, APO Offshore
949-232-6353
cpiovesan@apooftshore.com

DRILLING

Joe Tison, Greene Tweed
281-784-7805
wtison@gtweed.com

GENERAL MEETING

James Maffione, Decision Strategies
713-465-1110
jmaffione@decisionstrategies.com

HEALTH, SAFETY, SECURITY, ENVIRONMENT AND SOCIAL RESPONSIBILITY

Trey Shaffer, ERM
281-600-1016
trey.shaffer@erm.com

INTERNATIONAL

Michael Cherif, ExxonMobil
713-656-7303
michael.h.cherif@exxonmobil.com

NORTHSIDE

Naval Goel
650-307-7267
navalgoel@hotmail.com

PERMIAN BASIN

Dan Tobin, ConocoPhillips
832-486-2924
Dan.C.Tobin@conocophillips.com

PETRO-TECH

Marci Nickerson, Consultant
713-446-3400
mnick52@sbcglobal.net

PROJECTS, FACILITIES, CONSTR.

Bill Kinney, Technip
281-249-2799
wkinney@technip.com

RESEARCH & DEVELOPMENT

Skip Davis, Technology Intermediaries, LLC
281-359-8556
skdavis@technologyintermediaries.com

RESERVOIR

Jose Villa, Shell
281-544-2612
j.villa@shell.com

WATER & WASTE MANAGEMENT

Joseph Kilchrist, Ziff Energy
713-302-2727
jkilchrist@sbcglobal.net

WESTSIDE

Alex McCoy, Occidental Oil & Gas
713-366-5653
alexander_mccoy@oxy.com

MEMBER

Information

Reservations

For all SPE-GCS topical luncheons and social activities, please register online at www.spegcs.org. You must provide your SPE member number to receive member prices. Guests who have not made a reservation online will be charged an additional amount at the door. Walk-ins are not guaranteed admittance.

Reservations and cancellations required for all events.

• No-shows will be billed.

• Walk-ins will be charged extra.

Mastercard, Visa, American Express, Discover, and Diner's Club are accepted for advance reservations only. The technical and other opinions expressed by speakers at the Gulf Coast Section meetings may not have been reviewed by SPE and do not necessarily reflect the position of SPE, the Gulf Coast Section, its officers, or members. The only forum for rebuttal and discussion is during the meeting.

Change of Address

If you would like to report a change of address please contact:
Society of Petroleum Engineers
Member Services Dept.
P.O. Box 833836
Richardson, Texas 75083-3836
1.800.456.6863
service@spe.org

gyro/data

- » High Accuracy Gyro Wellbore Surveying and Guidance
- » Rotary Steerable Automated Drilling Systems
- » Monitor SWD™: Survey While Drilling (Inc, Az, TF)
- » Mud Motor Services and Rentals

Gulf Coast Sales and Operations 24 hour contact

(281) 213-6300 / (832) 667-9450

or see <http://www.gyrodata.com/>



Dyna-Drill®

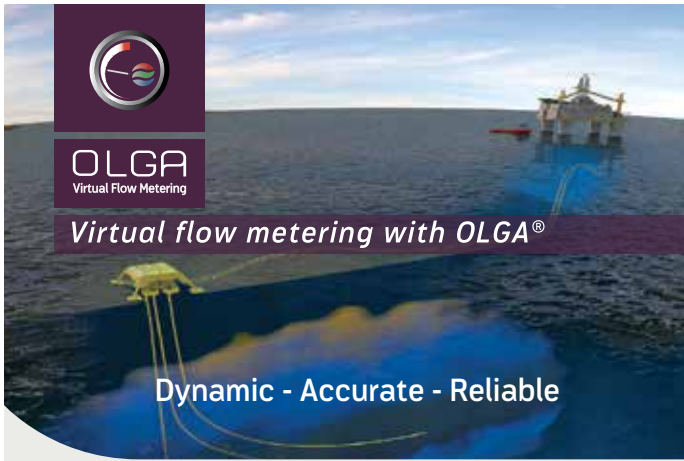
Manufacturers of
Drilling Motor Components

- Mud Motor Power Sections (Sizes: 2 7/8" to 11 1/2")
- Coil Tubing Power Sections (Sizes: 1 11/16" to 3 3/4")
- Matrix-3® Coated Bearings
- Precision Machining

www.dyna-drill.com

Power That Lasts™





The OLGA® Virtual Flow Metering (VFM) system is used on production wells to better monitor and control the production from subsea fields. OLGA VFM calculates flow rates throughout the production system by using the first principle multiphase transient flow simulator OLGA.

OLGA® Online offers 25 years of flow assurance experience, development and verification to operators and engineers.

Visit SPT Group at:
 Digital Energy Booth 101
 SSTB Booth 560
 March 5-7, 2013

SPT GROUP
 A Schlumberger Company

be dynamic®



NON-PROFIT ORGANIZATION
 U.S. POSTAGE PAID
 PERMIT NO. 6476
 HOUSTON, TX

SOCIETY OF PETROLEUM ENGINEERS
 GULF COAST SECTION

10777 Westheimer Road
 Suite 1075
 Houston, TX 77042

CALENDAR

February 2013

Sunday	Monday	Tuesday	Wednesday	Thursday	Friday	Saturday
						1
	SPE Hydraulic Fracturing Technology Conf.	SPE Hydraulic Fracturing Technology Conf.	SPE Hydraulic Fracturing Technology Conf.	Research & Development	Auxiliary	2
3	4	5	6	7	8	9
		Northside Petro-Tech	Drilling	General Meeting Board Of Directors		
10	11	12	13	14	15	16
	SPE Reservoir Simulation Symposium	SPE Reservoir Simulation Symposium Permian Basin	SPE Reservoir Simulation Symposium Digital Energy			
17	18	19	Westside 20	21	22	23
			Completions & Production	Reservoir		
24	25	26	27	28		