

CONNECT

SPE GULF COAST SECTION



APRIL 2018



Optimization in Unconventional Oil & Gas: How Far Can We Go?

Countering Human Trafficking: Risks and Strategies for the Oil and Gas Industry

2018 Reservoir Technology Symposium

NORTHSIDE

HSSE-SR

SPECIAL EVENTS

APRIL FEATURES

In Every Issue

CHAIR'S CORNER

02 Trey Shaffer

CALENDAR & MEMBERSHIP REPORT

05 April 2018

VOLUNTEER SPOTLIGHTS

07 Jody Mahoney
Mohammed Dooply

THEN & NOW

09 Buddy Woodroof

Study Groups

DIGITAL TRANSFORMATION

11 Announcing the launch of the Digital Transformation Study Group!

RESEARCH & DEVELOPMENT

11 4/5/18
Imaging P- and S-wave 9 Component Seismic Data

HSSE-SR

12 4/10/2018
Countering Human Trafficking: Risks and Strategies for the Oil and Gas Industry

NORTHSIDE

13 4/10/2018
Optimization in Unconventional Oil & Gas: How Far Can We Go?

GENERAL MEETING

13 4/12/2018
Beating the Competition – Deepwater vs. Shale

WESTSIDE

14 4/18/2018
Hydraulic Fracture Geometry Characterization Using Low-Frequency DAS Signal

NORTHSIDE

14 4/19/2018
Surfactant Chemistry and Its Impact on Oil and Gas Recovery in Shale Plays

DRILLING

15 4/19/18
Operators' Group, Rig Contractors, and OEM/Service Company Work to Solve Rig Data Quality Issues

COMPLETIONS & PRODUCTION

15 4/25/2018
Production Optimization With Artificial Lift and Why Should You Care

BUSINESS DEVELOPMENT

16 4/25/2018
Tellurian – The LNG Export Race

Special Events

PERMIAN BASIN

17 4/12/2018
2018 Permian Basin Symposium: Permian Basin Challenges & Opportunities in a Cyclic Oil & Gas Industry

GEOMECHANICS

18 4/18/2018
Geomechanics Congress: Recent Advancement in Petroleum Geomechanics

DATA ANALYTICS

19 4/19/2018
Data Science Convention: Transforming the Upstream O&G Industry with Advanced Data Science Solutions

RESERVOIR

20 4/26/2018
2018 Reservoir Technology Symposium: Maximizing Our Resource

Committees

MEMBERS IN TRANSITION (MIT)

21 4/20/2018
27th Seminar Series

CONTINUING EDUCATION

22 4/20/2018
Accelerated Learning Tutorial: Introduction to Petroleum Geology

YOUNG PROFESSIONALS

23 4/11/2018
Artificial Lift for Unconventionals

24 4/15/2018
Volunteering at The Beacon

24 4/26/2018
The Digital Oilfield

25 5/5/2018
Introduce a Girl to Engineering Day at Rice University

EDUCATION

26 Where Are They Now? Past Scholarship Winner: Scott Joyce

Recognition

SAVE THE DATE!

27 5/24/2018
2018 SPE-GCS Awards & Scholarships Banquet

Announcement

UNIVERSITY OF HOUSTON

28 Graduate Certificate Program: Unconventional Energy Sources

Student Chapters

SPE-GCS STUDENT CHAPTERS

29 Texas A&M University
University of Houston





Board Activity Update

TREY SHAFFER, 2017 – 2018 SPE-GCS CHAIR

A number of key activities are underway to renew the Board of Directors and address findings from an internal

audit conducted for the Gulf Coast Section by Grant Thornton. I've provided a brief summary of this work by the Board for the members of the Gulf Coast Section.

Election of Gulf Coast Section Board Members

We have begun our nomination process to elect several key Board positions. The Nominating Committee will be chaired by Deepak Gala, and members include Marise Mikulis, Karin Gonzalez, Mohammad Tabatabaei, Nils Kageson-Loe, Bill Davis, and Mike Redburn.

The Nominating Committee will proceed as follows:

1. The Nominating Committee will prepare a slate of candidates for each office and the date and location of a vote for the following positions: one candidate each for the position of vice chair, secretary, vice treasurer, and three at-large directors. The Nominating Committee will also nominate one candidate for each director (key committee chair) position to be appointed by the chair.
2. The deadline to submit nominations will be April 15.
3. Please submit nominations to Deepak Gala at deepak.gala@shell.com and Taylor Wright at spe-gcs@spe.org
4. Slate of candidates will be presented at the May 17, 2018, Board of Directors meeting for approval.
5. The results will be published via e-mail or the newsletter following the Board meeting in June.

All nominees must meet the qualifications for section membership defined in Article IV of the Gulf Coast Section Bylaws.

Gulf Coast Section Audit

In support of the governance requirements of SPE and the Gulf Coast Section, Grant Thornton was retained to undertake an operational review of SPE-GCS from October 30-November 3, 2017. Prashant Sainani, Gulf Coast Section Treasurer, facilitated the audit with support from myself, Taylor Wright, and Vicki Rau. I thought it would be useful to share the following excerpt from the executive summary with members:

“The operational review focused on the Section’s underlying governance and structure and the policies, procedures and operations within the financial management and communication business processes for FY 2018 as of November 2017. The review primarily focused on benchmarking current operating processes against leading practices for not-for-profit and trade organizations. Observations and recommendations are relative to a not-for-profit or trade organization with an already established set of procedures aligned with leading practices.

Grant Thornton identified several notable processes during the review:

- SPE-GCS has active membership and encourages both petroleum engineers and adjacent disciplines to join the Section.
- Despite the energy industry down cycle and subsequent decrease in membership and funding, SPE-GCS established the scholarship fund to support students in the profession.
- The annual budgeting process combines input from all levels, including committees, study groups, and the executive committee.”

The auditors reviewed and assessed relevant documentation, including bylaws, organizational charts, roles and responsibilities, policies, financial data for 2016- 2017, and key presentations.

Continued on page 3

Chair's Corner, Continued from page 2

During the review, process design and control procedures were tested on a limited basis to determine compliance with internal policies and procedures and industry leading practices.

A number of potential operational improvements and opportunities were identified, including opportunities to improve accounting controls, policies, and procedures, as well as governance associated with the scholarship endowment fund. To address these findings, Sunil Lakshminarayanan has accepted the role of Audit Committee Chair. Sunil has developed an action plan and is working closely with the Board of Directors to address the findings.

The Gulf Coast Section has a long history, and the volunteers serving on the Board of Directors are doing great things on behalf of our section and industry. Please join me in thanking the dedicated members of the GCS Board of Directors: www.spegcs.org/committees/board-of-directors/.

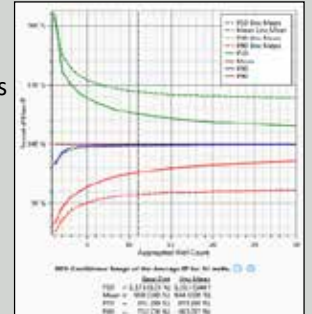


ProjectRA

Project Resource Analysis & Cash Flow Tool

Software for the Integrated Probabilistic Economic Modeling of Unconventional Projects to Address the Challenges of:

- Multiple play segment characterization
- Forecasting from limited data sets
- Pilot-sizing and confidence of achieving the mean
- Modeling type well decline variability
- Full-cycle economics
- Modeling in either scoping or detailed development mode



Contact us at www.roseassoc.com or 713-528-8422

LSi, the software
company of **Rose & Associates**

SUBJECT MATTER EXPERTS

DESIGN
ANALYSIS
TESTING

STRESS
ENGINEERING
SERVICES INC.

281.955.2900
www.stress.com

HOUSTON • CINCINNATI • NEW ORLEANS • BATON ROUGE • CALGARY

CHANGE HAS ITS REWARDS.



entero[®] MOSAIC[™]

Reserves, Economics, and Decline Software

Is your reserves reconciliation a highly laborious, time-intensive, and error-prone process? Do you wish you could streamline the process using a fully automated push-button solution?

With the large amount of data you're reconciling, and the limited time you have, there is a better solution. Entero MOSAIC is the only reserves, economics, and decline system that delivers a fast and meaningful measure of your company's performance in hours, rather than weeks.

- **EFFICIENCY:** Experience up to 50% in productivity gains
- **INTEGRITY:** Have confidence in your data with better visibility
- **TRUST:** Improve security through role based user/data management
- **INSIGHT:** Built-in stored results with scenario comparisons at the portfolio level

Learn more at www.entero.com/entero-mosaic, or call 1.877.261.1820

entero
energy software

SUNDAY	MONDAY	TUESDAY	WEDNESDAY	THURSDAY	FRIDAY	SATURDAY
				• Research & Development		
01	02	03	04	05	06	07
		• HSSE-SR • Northside	• Young Professionals	• 2018 Annual Permian Basin Symposium • General Meeting		
08	09	10	11	12	13	14
• Young Professionals			• 2018 Geomechanics Congress • Westside	• Data Science Convention • Board of Directors • Northside	• Training: Introduction to Petroleum Geology • Members in Transition Seminar	
15	16	17	18	19	20	21
			• Completions & Production • Business Development	• 2018 Reservoir Technology Symposium • Young Professionals	• 2018 Reservoir Technology Symposium Workshop	
22	23	24	25	26	27	28
29	30	31				

Upcoming Special Events

Mark Your Calendars

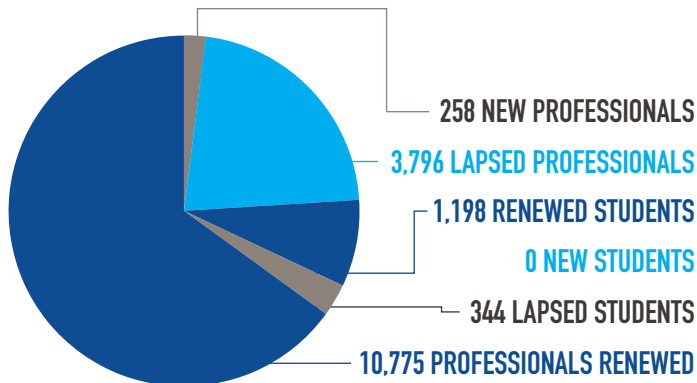
APRIL

- 12 PERMIAN BASIN SYMPOSIUM
- 18 GEOMECHANICS CONGRESS 2018
- 19 DATA SCIENCE CONVENTION
- 26 RESERVOIR TECHNOLOGY SYMPOSIUM

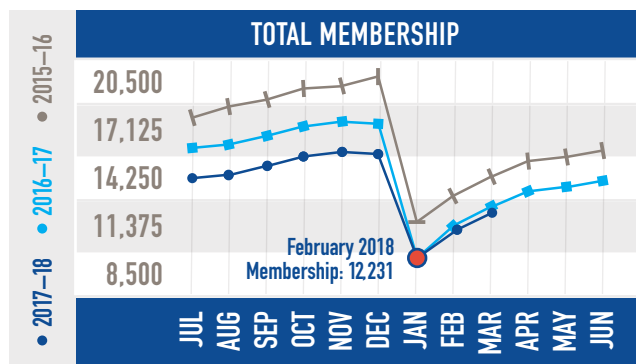
MAY

- 24 EMERGING ENGINEERS SYMPOSIUM

Membership Through February 2018



Current Membership Trends



Board of Directors Meeting

WHEN Apr 19, 7:30 – 10:30am
WHERE SPE Houston Office:
 10777 Westheimer Rd, Ste 1075
 Houston, TX 77042
R.S.V.P. Taylor Wright
 T (713) 457-6821
 F (713) 779-4216
spe-gcs@spe.org

Study Group Pricing

Unless specified separately in the registration website:
MEMBERS: \$40/\$55 Walk-in
NON-MEMBERS: \$55
STUDENTS/MIT/Retired SPE: \$15

SCALEGUARD

SCALE WORKOVERS FOR NEARLY 2 YEARS

A single application of SCALEGUARD proppant-delivered scale-inhibiting technology has maintained production rates and eliminated costly workovers for nearly two years in previously scale-prone wells in Manitoba, Canada. Similarly impressive results have been achieved in over 200 wells across North America.

The numbers speak for themselves

For more production enhancing technologies that improve your initial production, EUR and ROI numbers, talk to CARBO.

Read the full story
carboceramics.com/manitoba

CARBO
 Production. Enhanced.

JODY MAHONEY



Jody Mahoney got involved with SPE at the University of New South Wales in Australia, where she received her bachelor's in petroleum engineering. She then moved to Perth and became involved in the Western Australian Section of SPE. After five years in Perth, she moved to Houston and became involved in

events focused on unconventional. In 2015, she reached out to Mohammad Tabatabaei, who welcomed her into the GCS Reservoir Study Group. She served as Vice Treasurer and is now Program Chair.

Jody is the Subsurface Manager for the Mad Dog Field at BHP Billiton. As a reservoir engineer, she has worked deepwater GOM, onshore unconventional, and offshore Australia assets.

Volunteering with SPE allows Jody to meet talented, interesting people, all with a common interest. Conversations with these brilliant people keep her volunteering no matter how busy life and work become.

MOHAMMED DOOPLY



Mohammed Dooply has published technical papers, held technical committee memberships, and chaired sessions at SPE conferences. Since 2016, he has served on the Drilling Program Subcommittee for ATCE. He also serves as

Arrangement Chair for the Drilling Study Group.

Mohammed is a Deepwater Cementing Technical Specialist for Schlumberger, where he provides technical support for worldwide deepwater cementing operations. After earning a degree in mechanical engineering from the University of Indonesia, Mohammed joined Schlumberger in 1998 as Cementing Field Engineer in Indonesia. He has held cementing technical and managerial positions in Schlumberger operations. He is a member of AADE.


PVI Software Training

Four courses for drilling and completion engineers to develop their software modeling competence and skills



- Well Cementing
- Torque and Drag
- Drilling Hydraulics
- Mud Reporting

Free 1-month Software License Included

 Pegasus Vertex, Inc. | Drilling Software
(713)981-5558 | info@pvisoftware.com




VIKING
ENGINEERING
Quality. Integrity. Commitment.

PASSION IS ENERGY
We have a Passion for Well Integrity

Engineering | Quality Assurance | Failure Analysis
www.vikingeng.net | 281.870.8455

5

REASONS

95% of users would recommend PHDWin to a friend or colleague

Free trial at www.phdwin.com



1. Sophisticated Engineering Tools
2. Robust Economics
3. Easy to Learn & Easy to Use
4. Language of the O&G Industry
5. Best in Class Meets Best Value

Download your fully functional trial at www.phdwin.com

PHDWIN

TRC Consultants, LC
 888.248.8062
www.phdwin.com

WORTHWHILE CONVERSATIONS

PROTECTING YOUR BLIND SIDE

HAROLD: Cyber fraud and identity theft are hitting the news repeatedly. How concerned should people be?

PHILLIP: Plenty. It is America's fastest-growing crime and Texas is one of the top 5 states in victims per 100,000 in population. Almost everyone at least knows someone personally who has been victimized. Our Wealth Management Committee – a group that includes attorneys, MBAs, CPAs, CFA® charterholders and CFP® practitioners – has devoted increased discussion to this topic every year for the last four years. We consider it a critical area of our risk management conversations with clients.

HAROLD: "Risk management" is usually a code word for insurance. Is this an insurance issue?

PHILLIP: Insurance is really only on the fringe of cyber fraud risk. It's also fair to say that signing up for one of the credit fraud monitoring services, while possibly worthwhile, is certainly no panacea. You must take proactive steps to create an effective defense. That makes it a

standout compared to many other risk-management strategies, and therefore unique compared to most of what we have experienced in our 46 years of advising clients.

HAROLD: What are some of those "proactive steps?"

PHILLIP: Locking down your credit bureau files, creating a "deterrence" protocol with your credit card usage, and putting penetration "armor" on your major asset accounts – these are a few, but more than time permits detailing. The key is to invest the time, preferably with the help of someone qualified to give counsel, to develop a set of strategies that work efficiently for you and are relatively hassle-free to maintain. At Linscomb & Williams, our Wealth Advisors are prepared to invest that time with you as part of a client-centered wealth management conversation. We are ready to start that conversation on a no-cost, no-obligation, exploratory basis at our offices in the Houston Galleria or The Woodlands.



Phillip Hamman discusses cyber fraud and what proactive measures clients can take with J. Harold Williams. (Left to right: Phillip Hamman, CFA, CFP®; J. Harold Williams, CPA/PFS, CFP®)

For more information, or a copy of our Form ADV, Part II, with all of our disclosures, call Harold Williams at 713 840 1000 or visit www.linscomb-williams.com.

LINSCOMB  WILLIAMS
 WEALTH MANAGEMENT SINCE 1971

1400 Post Oak Boulevard, Ste. 1000 Houston, Texas 77056
 713 840 1000 www.linscomb-williams.com

Linscomb & Williams is not an accounting firm.

THEN & NOW

APRIL 1970

Russian oilmen are reportedly involved in exploration-development programs in more than 20 countries, while boasting of enormous new Siberian reserves, all of which are threatened by high production costs.

The infant organization of Arab Petroleum Exporting Countries (Oapec) reports five more Arab producing nations (Algeria, Bahrain, Qatar, Abu Dhabi, and Dubai) as seeking to be admitted, to join present members Kuwait, Saudi Arabia, and Libya.

US rig count: 927

APRIL 1985

London-based Scottish and Marine Oil plc and partners report strong hydrocarbon shows off Sicily in its first well in Italian waters (sure beats working in Muleshoe, TX!).

Conoco looks to install as many as three tension-leg well platforms (TLWP) to develop the deepwater Green Canyon in the Gulf of Mexico, and the three platforms would share a permanently moored tanker, which would contain the production equipment and personnel accommodations.

US rig count: 1,939

APRIL 2000

The movement toward the virtual oil company continues to gain momentum, as McMoRan Exploration and Halliburton announce the formation of an alliance in which Halliburton will take over the operation of McMoRan's Gulf of Mexico E&D program.

Nigeria creates a new police unit—authorized to shoot vandals on sight—to protect its oil pipelines, acknowledging that they have tried all other alternatives and now must resort to this extreme measure.

Light sweet crude oil: \$26.99/bbl

Natural gas: \$2.92/MMbtu

US rig count: 775

THE REST OF THE YARN

This month we continue our look back at the rise and fall of wildcatter Glenn McCarthy, as an unlikely financial partner for his hotel steps forward.

As World War II drew to a close, in the summer of 1945, a broker put McCarthy in touch with an officer at the Equitable Life Assurance Society of the United States. It was a fateful choice. Up and down Fifth Avenue, scores of New York lenders, keenly aware of the massive loans Sid Richardson and Clint Murchison had taken, were flocking to find oilmen of their own to fund. America's third-largest lender, Equitable, was late to the oil game but determined to catch up. Its executives

had opened their oil lending office in Dallas just weeks before, in May 1945. Its first loan was for \$425,000. The second, to McCarthy, would be a jaw-dropping \$22 million, among the largest loans Equitable's board had ever approved. That was only the beginning.

To ascertain McCarthy's creditworthiness, Equitable first commissioned an analysis of his business. In February 1946, a petroleum engineer it had hired valued McCarthy's oil and gas reserves at \$45 million. On the strength of that report, Equitable advanced McCarthy the first \$22 million, all but \$3 million of which went to pay off existing debts. McCarthy knew that more would be coming, and in short order began to put his plans into motion. He moved his offices into the Shell building, taking

up the entire sixth floor, and hired a public-relations man, a Houston radio veteran named Fred Nahas. If McCarthy so much as burped, Nahas made sure it got into the papers. Texas reporters quickly discovered that McCarthy, with his dashing mustache and good looks, was eminently quotable—making him an entirely different animal from taciturn Hugh Roy Cullen or other press-shy Texas oilmen. So frenetic were McCarthy's preparations that year, and so effective Nahas at publicizing them, it sometimes seemed McCarthy was the only oilman in Houston in 1946.

Next month, McCarthy begins his promotional campaign.

HISTORY QUIZ

The majority of the earliest fracturing fluids were oil-based. By 1970 (and within 5%), what percentage of the fracturing fluids being employed were water-based?

If you would like to participate in this month's quiz, e-mail your answer to contest@spe.org by noon April 15. The winner, who will be chosen randomly from all correct answers, will receive a \$50 gift card to a nice restaurant (courtesy of the ProTechnics Division of Core Lab).

ANSWER TO MARCH'S QUIZ

In the early part of the 21st century, John Browne, Group Chief Executive with BP, was quoted as saying, "I believe the American people expect a company like BP, the largest single supplier of oil and gas in this country, to offer answers, not excuses."

Congratulations to February's winner – Jack Courtney



Your Clear Solution for Deepwater Completions

TETRA CS Neptune™ is a high-density (up to a density of 15.4 ppg, 1.85 g/ml), solids-free fluid that provides a viable alternative to zinc bromide and cesium formate brines.

- ▶ Zinc-free with global environmental acceptability
- ▶ Does not require zero-discharge system of work
- ▶ Formulated from renewable products, ensuring continuity of supply
- ▶ Can be reclaimed for reuse, using standard technology
- ▶ Requires no special mixing, handling, or storage equipment at rigsite
- ▶ Can be formulated as a low-solids, reservoir drill-in fluid



TETRA CS Neptune fluid is another innovative solution from TETRA Technologies, Inc.




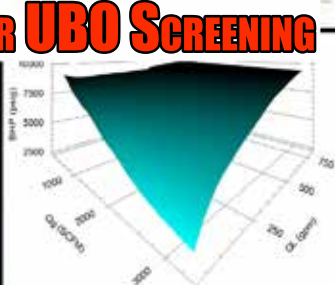


DEDICATED TO THE CØRE 

© 2016 TETRA Technologies, Inc. All Rights Reserved. TETRA and the TETRA logo are registered trademarks, and TETRA CS Neptune is a trademark of TETRA Technologies, Inc.





No-Cost MPD or UBO SCREENING

Get an unbiased review to address your MPD needs using ADVANCED HYDRAULIC SOFTWARE

- Get insight into managing your challenging wells
- Walk away with your analysis and results
- Review your best-fit solution: Conventional, MPD, UBO
- No-obligation consultation
- Get a blueprint for all your service needs (training, execution, personnel, analytics)
- By appointment only, Thursday afternoons in Houston, TX, USA



Contact:
Dr. Sagar Nauduri, PE
281.774.3116
snauduri@sigma.net

Email Taylor Wright today:
SPE-GCS@SPE.ORG

Sigma Engineering Corp.
 Houston, TX USA, 281.774.1000
www.signaengineering.com

CONNECT WITH

CONNECT



We challenge you
to send us your feedback
on anything related
to SPE-GCS.

Email Taylor Wright today:
SPE-GCS@SPE.ORG

DIGITAL TRANSFORMATION

Announcing the launch of the Digital Transformation Study Group!

Tentative Lunch & Learn subjects include:

- OMV Sucker Rod Pump Edge Analytics
- DCP Benefits of Analytics and Physics based IoT
- Transocean, IoT Deployment Lessons Learned

Check the webpage spegecs.org/study-groups/digital-transformation/ for monthly Lunch & Learns Agenda. From that page use the link provided to review your preferences to receive email updates from our study group!

ENABLING DIGITAL TRANSFORMATION - DATA AS DIGITAL CAPITAL



DRIVE Adoption

Data-Driven Decision
Making using IIoT + Big Data +
AI + Cyber Security



SHARE Use Case & Best Practices

Promote Safety, Increase
Productivity, Reduce Costs,
Minimize Environmental Impact



GUIDE The Industry

Towards understanding,
leveraging, and protecting data
a critical enterprise asset.

RESEARCH & DEVELOPMENT

Imaging P- and S-wave 9 Component Seismic Data

RARE is an exclusive, proprietary, state-of-the-art seismic processing algorithm.

- RARE's software extracts weak signals from complex noisy seismic data.
- RARE offers a novel method to extract S-wave information (SV-SV, SH-SH, P-SV and SV-P wavefields) from a Vertical Force Sources (VFS),

traditionally considered to be a P-wave sources, from 2D (1C or 2C) seismic data or 3D multicomponent seismic data.

- RARE enhances P-P wave data and provides vastly improved velocity volumes and reflection imaging.
- R&D includes extraction of the SV-P wavefield from traditional/legacy P-wave datasets.

JOHN ROBINSON

John Robinson has been active in seismic R&D for the past 14 years and is the inventor of RARE Technology (RARE). John holds 18 patents and patent applications in the United States and other countries for RARE Technology. John believed in his technology so much that he used it to successfully drill wells for his own O&G company, e-Wave Exploration, L.P.

EVENT INFO

WHEN

Wed, April 5, 2018
11:30am – 1:00pm

SPEAKER

John Robinson
*Incoming P- and S-wave 9 Component
Seismic Data, Rare Technologies*

LOCATION

Norris Center – Westchase
9990 Richmond Avenue – Suite 102
Houston, TX 77042

CONTACT

Mark Sokolow
mtsokolow@yahoo.com

REGISTER ONLINE

HSSE-SR

Countering Human Trafficking: Risks and Strategies for the Oil and Gas Industry

In the aftermaths of a disaster, such as Hurricane Harvey, a sudden demand for workers can lead to exploitation. Especially in remote areas where workers and services may be limited, there is a risk of illicit labor recruiters providing workers to contractors in their supply chain. There has been

a precedent of legal cases related to Hurricane Katrina and the oil and gas industry. This presentation will discuss potential risks to the industry and provide recommendations for intervention and prevention of labor exploitation.

MINAL PATEL DAVIS

Minal Patel Davis serves as Houston Mayor Sylvester Turner's Special Advisor on Human Trafficking. She is charged with making a local impact on human trafficking from a policy-level perspective and by advancing systems change. She developed and is implementing Turner's Anti-Human Trafficking Strategic Plan. Davis received her JD and MBA from the University of Connecticut and a BA from NYU.

EVENT INFO

WHEN

Tuesday
April 10, 2018
11:30am – 1:00pm

SPEAKER

Minal Patel Davis
Special Advisor to the Mayor on Human Trafficking City of Houston

LOCATION

Marathon Oil Tower
& Conference Center
5555 San Felipe Rd
Houston, TX 77056

CONTACT

Angelo Pinheiro
abpinheiro@marathonoil.com

REGISTER ONLINE

NORTHSIDE

Optimization in Unconventional Oil & Gas: How Far Can We Go?

Unconventional oil and gas resource development in North America has benefited significantly from operators' relentless focus on cost reduction and optimization. A number of workflow improvements and new technologies have enabled operators reduce costs consistently over several years. Some

cost reductions have also come from discounts provided by oilfield service and equipment players following the recession. This presentation will provide an overview of cost optimization in unconventional over the past few years and key drivers along with identifying new opportunities for cost optimization.

UDAY TURAGA



Uday Turaga is Founder and CEO of ADI Analytics, a management consulting firm. Turaga has led ADI for the past nine years and through 300 projects for clients including ExxonMobil, Shell, Saudi Aramco, BASF, GE, Honeywell, and the US Department of Energy. Turaga holds a PhD in fuel science from Penn State and an MBA from UT-Austin. He has authored over 100 papers and patents.

EVENT INFO

WHEN

Tues, April 10, 2018
11:30am – 1:00pm

SPEAKER

Uday Turaga
Founder & CEO, ADI Analytics

LOCATION

SWN Campus
10000 Energy Dr, Spring, TX 77389

CONTACT

Jon Spencer – 281-291-7769
jon.Spencer@tracerco.com

Matt Boothe – 281-731-3140
matt_Boothe@swn.com

[REGISTER ONLINE](#)

GENERAL MEETING

Beating the Competition – Deepwater vs. Shale

This presentation will examine the economic and technology metrics for deepwater and shale as they compete for asset dollars. The oil patch is getting healthy again, but in a vastly different world. Improving efficiencies, completion of “the great crew change,” and emerging/alternative energy sources are keeping prices lower for longer.

Deepwater prospects, once a big part of the oil patch's growth, face significant competitive headwinds, primarily from shale. Shale continues to improve production efficiencies and gain market share. For deepwater to compete, it will need to find new configurations and efficiencies other than just dropping the cost of equipment.

BRIAN SKEELS



At TechnipFMC, Brian Skeels serves as technical advocate and strategic planning specialist for new technologies, HPHT, riserless light well intervention, ROV interfaces, remote robotics, and hydrate remediation programs. Skeels has a BS in mechanical engineering from Cornell University and an MS in ocean engineering from the University of Rhode Island. He is an Adjunct Professor in subsea engineering at the University of Houston.

EVENT INFO

WHEN

Thurs, April 12, 2018
11:30am – 1:00pm

SPEAKER

Brian Skeels
Senior Technical Advisor, TechnipFMC

LOCATION

Petroleum Club of Houston
1201 Louisiana St, 35th Floor
Houston, TX 77002

CONTACT

Barry Faulkner – 281-627-8792
barryf1944@gmail.com

[REGISTER ONLINE](#)

WESTSIDE

Hydraulic Fracture Geometry Characterization Using Low-Frequency DAS Signal

Monitoring and diagnosing completions during hydraulic fracturing operations provides insights into the fracture geometry, interwell frac hits, and connectivity. This presentation will showcase examples using the low-frequency band of the

DAS signal to constrain hydraulic fracture geometry. It will be shown that DAS data in the low-frequency band provide a powerful attribute to monitor small strain and temperature perturbations in or near the monitor wells.

DR. GE JIN



Dr. Ge Jin is a Senior Geophysicist in subsurface technology at ConocoPhillips. He developed a series of applications that utilize DAS signals in the low-frequency band to characterize unconventional reservoirs. Jin obtained his PhD in geophysics from Columbia University and holds BS degrees in geophysics and computer science from Peking University.

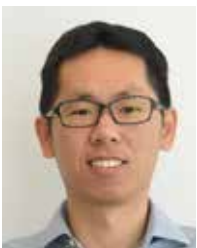
NORTHSIDE

Surfactant Chemistry and Its Impact on Oil and Gas Recovery in Shale Plays

This rescheduled Distinguished Lecturer presentation will give a concise overview on surfactant chemistry and its most relevant parameters to hydraulic fracturing. In particular, the key characteristics of surfactant additives will be discussed in terms of conventional wisdom and newer chemistry. Insights will also be provided

into potential synergies between surfactant and other additives, such as friction reducer, scale inhibitor, biocides and proppant, thereby leading to a better fracturing fluids design. When properly selected, surfactant-containing fracturing fluids tend to lead to better well cleanup and higher ultimate oil recovery.

SPE DISTINGUISHED LECTURER – LIANG XU



Liang Xu is responsible for developing fracturing additives, including surfactant, friction reducer, and proppant transport. He was the recipient of the MVP award for surfactant technologies from Halliburton Academy, and his RockOn surfactant technology was voted the best production chemical in 2013 by World Oil. He has authored or co-authored over 15 SPE papers and several patents.

EVENT INFO

WHEN

Wed, April 18, 2018
11:30am – 1:00pm

SPEAKER

Ge Jin
Senior Geophysicist, ConocoPhillips

LOCATION

Norris Center Westchase
9990 Richmond Ave, Ste 102
Houston, TX 77042

CONTACT

Bharath Rajappa - 832-486-3122
bharath.rajappa@conocophillips.com

[REGISTER ONLINE](#)

EVENT INFO

WHEN

Thurs, April 19, 2018
11:30am – 1:00pm

SPEAKER

Liang Xu
Technical Manager, Halliburton

LOCATION

SWN Campus
10000 Energy Dr, Spring, TX 77389

CONTACT

Jon Spencer - 281-291-7769
jon.Spencer@tracerc.com

Matt Boothe - 281-731-3140
matt_Boothe@swn.com

[REGISTER ONLINE](#)

DRILLING**Operators' Group, Rig Contractors, and OEM/Service Company Work to Solve Rig Data Quality Issues**

IADC/SPE-18962

MATT ISBELL

Matt Isbell graduated from the University of Texas with a BSME and has 27 years of experience optimizing drilling performance in fields around the world. He is a Drilling Optimization Advisor at Hess focused on developing and implementing a continuous improvement process to target and address value limiters during drilling and completion operations.

EVENT INFO**WHEN**

Thurs, April 19, 2018
11:30am – 1:00pm

SPEAKER

Matthew Isbell
Drilling Optimization Advisor
Hess Corporation

LOCATION

Petroleum Club of Houston

CONTACT

Tom Wick – 713-806-2631
twick@hytorc.com

REGISTER ONLINE**COMPLETIONS & PRODUCTION****Production Optimization With Artificial Lift and Why Should You Care**

With more than 95% of US oil wells on artificial lift, significant lease operating costs are tied to artificial lift operations. By not paying attention to lift selection and operations, you may be missing opportunities. Ill-informed lift decisions may also cause unplanned shutdowns and loss of production. Dr. Rajan Chokshi will present observations on:

- How lift practitioners' perspectives have changed.
- Why artificial lift matters whether you are focused on liquids or gas production.
- How operators are improving efficiencies under lower pricing environments while extending the productive life of assets.
- How we are setting ourselves up to derive more benefits from technologies like data analytics, machine learning, and edge computing.

DR. RAJAN CHOKSHI

Dr. Rajan Chokshi is an Artificial Lift and Production Optimizer. With 34-plus years of global experience, he has worked in multi-phase flow, artificial lift optimization, and real-time production monitoring. He has co-authored over 15 SPE papers, delivered SPE webinars, and conducts workshops globally. He has been selected as an SPE Distinguished Lecturer twice.

EVENT INFO**WHEN**

Wed, April 25, 2018
11:30am – 1:30pm

SPEAKER

Rajan Chokshi
Artificial Lift and Production Optimizer
Accutant Solutions

LOCATION

Norris Center, Westchase
9990 Richmond Ave, Ste 102
Houston, TX 77042

CONTACT

Reza Safari - 346-804-8916
reza.safari@weatherford.com

REGISTER ONLINE

BUSINESS DEVELOPMENT**Tellurian – The LNG Export Race**

Tellurian's Vice Chairman and co-founder, Martin Houston, will discuss how the growth in US natural gas production and increasing liquefied natural gas (LNG) exports have impacted the global gas markets – and what role Tellurian has to play.

Tellurian is developing an LNG production and export terminal on the

west bank of the Calcasieu River, south of Lake Charles, LA. The project is expected to be sanctioned in 2019 and to ship its first cargo by 2023. Tellurian is also developing upstream and midstream assets to support its LNG development.

A networking hour in the mezzanine will be followed by an hour-long program, including Q&A.

MARTIN HOUSTON

Martin Houston is co-founder and Vice Chairman of Tellurian. He retired from BG Group in 2014 as Chief Operating Officer and a member of the board of directors. Houston sits on the National Petroleum Council and is a Fellow of the Geological Society of London. He has a bachelor's degree in geology from Newcastle University and a master's in petroleum geology from Imperial College, London.

EVENT INFO**WHEN**

Wednesday
April 25, 2018
5:00-7:00pm

SPEAKER

Martin Houston
*Vice Chairman and Co-Founder
Tellurian*

LOCATION

Four Seasons Hotel Houston
1300 Lamar St
Houston, TX 77010

CONTACT

Heidi Epstein
832-679-7182

heidi.epstein@ihsmarkit.com

REGISTER ONLINE

PERMIAN BASIN



SPE-GCS Permian Basin Study Group Presents 2018 Permian Basin Symposium: Permian Basin Challenges & Opportunities in a Cyclic Oil & Gas Industry

Annually, SPE-GCS hosts the Permian Basin Symposium, a one-day conference primarily focused on the most prolific and active basin in the US. In its 12th year, the event continues to provide a networking forum to discuss and disseminate the latest innovations and technological advances that drive the

Permian Basin's resurgence despite the challenging market conditions. We expect over 300 engineers, scientists, academics, managers, and financial executives to attend.

Please visit www.spegcs.org/PBS for more information.

KEYNOTE SPEAKERS

**MONTE DOBSON**

Senior Vice President of Development,
XTO Energy

**ALLEN GILMER**

Co-Founder and Executive Chairman,
Drillinginfo

EVENT INFO

WHEN

Thursday
April 12, 2018
8:00am – 4:20pm

LOCATION

Norris Center – Westchase
9990 Richmond Ave, Ste 102
Houston, TX 77042

PRICE

Members: \$125
Non-Members: \$150
Students/MIT: \$40

*Please also join us for
happy hour after the event.*

4:30-7:00pm

The General Public
797 Sorella Ct, Ste 118
Houston, TX 77024

REGISTER ONLINE

SPEAKERS

- Abe Abraham and Amy Timmons
- George King – Distinguished Engineering Advisor, Apache
- Kathy Ball – E&P Analytics and Data Science Manager, Devon Energy
- Shauna Noonan – Chief Production Officer, OXY
- Jim Rose – Partner, Sidley Austin LLP
- Patrick Lissonnet – Vice President, Kayne Capital
- Jon Grimmer – Vice President, Quantum Energy Partners
- Joey Hall – Executive VP of Permian Operations, Pioneer Natural Resources
- Dave Sobernheim – Executive VP of Engineering & Technology, Keane Group

GEOMECHANICS

Geomechanics Congress: Recent Advancement in Petroleum Geomechanics

The Geomechanics Congress is an effort from SPE-GCS to contribute and impart technical knowledge to members. Attendees can learn and discuss, with highly recognized speakers, the latest petroleum geomechanics topics and top technology developments. The event will discuss exploration, drilling, completion, and production geomechanics.

Gold Sponsors



Silver Sponsors



EVENT INFO

WHEN

Wed, Apr 18, 2018, 7:30am – 4:00pm

LOCATION

Southwestern Energy
1000 Energy Dr, Spring, TX 77389

CONTACT

Reza Safari – 346-804-8916
reza.safari@weatherford.com

PRICE

Members: \$150, Non-Members: \$175
Students/MIT/Retired: \$75

REGISTER ONLINE

AGENDA

7:30am	Registration/Breakfast	1:10pm	Geomechanical Effects on the Efficiency of Plug & Perf Completions in Unconventional Wells
8:20am	Welcome and safety briefing	1:35pm	How Much Do Proppants Contribute to Production in Unconventional Resources?
8:30am	Keynote	2:00pm	Geomechanical Modeling of Asymmetric Hydraulic Fracture Height Propagation in a Multilayered Rock Using Damage Mechanics and the Material Point Method
9:15am	Using Geomechanics Earlier in the Life Cycle	2:25pm	Second break/networking
9:40am	Salt Flow and Deformation of Reservoir Intervals Within Layered Evaporate Sequences Over Geological Time Scales: Insights From Geomechanical Forward Modeling	2:45pm	Well Productivity Enhancement: From Reservoir Geomechanics to Near-Wellbore Geomechanics
10:05am	Implications of New Stress Mapping for Oil and Gas Production in Tight Formations	3:10pm	Utilizing 3D Geomechanics Models to Evaluate and Influence Production and Injection Operations
10:30am	First break/networking	3:35pm	Coupled Reservoir/Geomechanics/ Stimulation Modeling Workflow to Forecast and Mitigate Infill Degradation
10:45am	Drill Bit Geomechanics: Providing the Data Needed for Mechanical Studies		
11:10am	Pore Pressure Prediction and Wellbore Stability Analysis to Reduce Drilling Risks		
11:35am	Lunch/networking		
12:45pm	Mapping Reservoir Stress Conditions Using Hydraulic Fracturing Microseismicity		

DATA ANALYTICS

Data Analytics Study Group Presents the Data Science Convention Transforming the Upstream O&G Industry with Advanced Data Science Solutions

SPE-GCS will host a one-day Data Science Convention at the Norris Conference Center in Houston on Thursday April 19. The theme is “Transforming the Upstream O&G Industry with Advanced Data Science Solutions.” The convention is intended for upstream oil and gas professionals, academics, and students with interests in emerging data science, machine learning, and artificial intelligence applications.

SPONSORED BY:



AGENDA

- 7:30am** Registration and Reception
- 8:00am** Keynote: Greg Leveille, *CTO, ConocoPhillips*
Session: Levering Emerging Technologies
- 8:30am** Kim Pham, *Assoc. Partner, IBM Global Business Services*
- 9:00am** Dr. Richard Baraniuk, *Victor E. Cameron Professor, Rice University*
- 9:30am** Pallav Sharma, *Chief Scientist, Tachyus*
- 10:00am** Break
- 10:30am** Session: Driving Oilfield Efficiencies and Productivity
Pedro Esteves Aranha, *Technology Advisor, Petrobras*
- 11:00am** Patrick Ruttly, *Sr. Product Manager, DrillingInfo*
- 11:30am** Barry Zhang, *CEO Quantico Energy Solutions*
- 12:00pm** Lunch
- 1:00pm** Keynote: Michael Rowley, *Director of Technology & Innovation BP*
Session: Unlocking New Hydrocarbon Resources
- 1:30pm** Prashant Mehrotra, *Senior Manager, Strategy, Accenture*
- 2:00pm** Dr. Liz Percak-Dennett, *Technology Director, Biota Technology*
- 2:30pm** Break
- 3:00pm** Panel Session: Building Data Science Practices in Organizations
Andy Flowers, *Director, Advanced Analytics, Marathon Oil*
Pradeep Ashok, *Senior Research Scientist, University of Texas, Austin*
Pat Kinder, *Sr. Director, Pioneer Natural Resources*
Troy Ruths, *CEO and Chief Data Scientist, Ruth Analytics and Innov.*
- 4:15pm** Closing Remarks
- 4:30pm** Networking and Exhibition

EVENT INFO

WHEN

Thursday
Apr 19, 2018
7:30am – 6:00pm

LOCATION

Norris Conference Center –
Town & Country
816 Town and Country Blvd #210
Houston, TX 77024

EXHIBITION REGISTRATION

Supriya Gupta
supriya026@gmail.com

Jeremy Vila
jeremypvila@gmail.com

Tom Howes
howestb@gmail.com

PRICE

Members: \$175
Non-Members: \$200
Students/MIT/Retired: \$75
Above pricing ends on 4/18/2018

REGISTER ONLINE

RESERVOIR

2018 Reservoir Technology Symposium Maximizing Our Resource

The Reservoir Study Group annually hosts the Reservoir Technology Symposium to disseminate the knowledge and technology needed to achieve the many objectives of reservoir management, including understanding risk, increasing production and reserves, and maximizing resources.

AGENDA

SESSION 1	Technology & Innovation: Emerging Technologies to Maximize Our Resources
S1.01	Andrew Oghena, Chevron
S1.02	Reza Rastegar, Occidental Petroleum Corporation
S1.03	Hani Elshahawi, Shell
SESSION 2	Production Forecasting & Reserves Estimation
S2.01	Dan Diluzio, Newfield
S2.02	Christine Ehlig-Economides, University of Houston
LUNCH	Keynote Luncheon: Oil Geopolitics and US-Mideast Relations Jim Krane, Rice University's Baker Institute
SESSION 3	Unconventional Reservoirs – A Service Company's Perspective
S3.01	Johannes Will, Dynardo
S3.02	Liz Percak-Dennett, Biota
S3.03	Chet Ozgen, Nitech
SESSION 4	Unconventional Reservoirs – An Operator's Perspective
S4.01	Faye Liu, ConocoPhillips
S4.02	Do Shin, Occidental Petroleum Corporation
S4.03	David Rains, Chevron

SPONSORS

Diamond | 

Platinum | 

Gold | 



3esi • Enersight



Silver | 

Bronze |







EVENT INFO

WHEN

Thurs, Apr 26, 2018, 7:30am – 4:00pm

LOCATION

Anadarko Conference Center
1201 Lake Robbins Dr
The Woodlands, TX 77380

REGISTRATION
& PRICING FOR
SYMPOSIUM

Thursday | April 26, 2018

Early Registration

Member \$100

Non-Member \$125

Late Registration

Member \$125

Non-Member \$150

Walk-In \$150

Registration

Students/MIT/Retired \$50

*Limited spots. See website for details.

REGISTRATION
& PRICING FOR
ONE-DAY
WORKSHOP

Friday | April 27, 2018

One-Day Workshop Sponsored by
3esi-Enersight

Early Registration

Member/Non-Member \$300

Late Registration

Member/Non-Member \$350

Registration

Students/MIT/Retired \$125

[REGISTER ONLINE](#)

MEMBERS IN TRANSITION (MIT)

SPE MiT Initiative: 27th Seminar Series

The SPE Members in Transition Seminar Series features topics of interest to SPE members who are transitioning between jobs during the current industry downturn or who are looking for new opportunities. The agenda for the 27th seminar will include the following programs:

PROGRAM 1

What Type of Mentor Are You?

There are many opportunities to mentor, but you must first determine which mentoring capacity is best suited for you. This discussion will cover the following mentoring categories and the roles the mentor and mentee play in the relationship: technical, job, career, impact, or counseling. Everyday opportunities to give back in this way will also be shared.



CHUCK GREER

Chuck Greer was recently recognized as Chevron Mentor of the Year. His 40-plus-year career includes roles of increasing responsibility at Chevron, Production Management Industries, Growth Resources, and Schlumberger. He received MS and BS degrees in electrical engineering from Virginia Tech.

PROGRAM 2

Data to Make Value-Driven Decisions

Cheng Zhang will demonstrate an effective visual analytical workflow utilizing pertinent geologic and engineering data to generate a type well profile. The type well profile provides an improved understanding of predicted well performance, critical to estimating the economic outcome and thereby reducing risk for value-driven decisions.



CHENG ZHANG

Cheng Zhang partners with OGRE Systems to grow their professional reserve-related brand, R3. He received a BS in petroleum geology from SWPU in China and MS degrees in petroleum engineering from the University of Houston and the University of Wyoming.

PROGRAM 3

BetterSpeak: 3 Steps to Improving How You Say What You Say

Ever gotten irritated when people ask you to repeat something because they couldn't understand you? Ever thought that it may be because you don't speak well? Learn to improve how you speak so people won't keep interrupting you and making your life miserable.



DR. DAVID PELTON

Dr. David Pelton has been a professional communicator/presenter for 45 years and has taught courses in communication and communication-related subjects. He holds degrees from Cornell University, The New England Conservatory of Music, and the University of Cincinnati.

EVENT INFO

WHEN

Friday
April 20, 2018
10:00am – 3:00pm

SPEAKERS

Chuck Greer
Well Abandonment Advisor
Chevron

Cheng Zhang
Business Development Executive
OGRE Systems

Dr. David Pelton
President
Pelton Communications, LLC

LOCATION

Houston Technology Center
410 Pierce St
Houston, TX 77002

CONTACTS

Susan Howes
713-553-5020
c.susan.howes@gmail.com

Ashish Fatnani
832-415-6835
ashish.fatnani@halliburton.com

PRICE

Members: \$40/\$50 Walk-In
Non-Members: \$50
Students/MIT/Retired: \$15

Registration Cap: 70

REGISTER ONLINE

CONTINUING EDUCATION

Accelerated Learning Tutorial: Introduction to Petroleum Geology

This daylong tutorial will give attendees an overview of geological concepts in the context of petroleum exploration and production. Topics include petroleum generation and accumulation and the variables within depositional systems that impact reserve recovery. Attendees will receive a certificate for eight Professional Development Hours.

TOPICS

- Introduction
- Historical geology/geologic time
- Physical geology/depositional processes and stratigraphy
- Depositional basins
- Structural geology
- Petroleum reservoirs/
conventional and unconventional
- Reservoir characterization
- The petroleum prospect
- Reference information

DR. MAGGIE DALTHORP

Maggie Dalthorp most recently served as Exploration Manager for Murex Petroleum Corporation. Prior experiences include running her own company, Moorhouse Associates Inc. Dalthorp holds an MBA and a doctorate in coastal and marine system science from Texas A&M University-Corpus Christi and a bachelor's in geology from The University of Texas at Austin.

EVENT INFO

WHEN

Friday
April 20, 2018
8:30am – 4:30pm

SPEAKER

Dr. Margaret Dalthorp
Exploration Manager
Murex Petroleum Corporation

LOCATION

SPEI Houston Training Center
10777 Westheimer Rd
Houston, TX 77042

CONTACT

Mike Redburn
281-754-8629
mredburn@newpark.com

PRICE

Members: \$350
Non-Members: \$375
Students/MIT/Retired: \$50

REGISTER ONLINE

YOUNG PROFESSIONALS

Artificial Lift for Unconventionals

Artificial lift is a vital application in today's unconventional environment. Two common types of artificial lift are gas lift and hydraulic lift. During this discussion, attendees will learn the basic concepts of these lift systems and how they are being used.

For gas lift, discussion will center on:

- Gas lift's role in providing solutions to today's unconventional fields, where laterals are getting longer and IP targets are growing
- The basics, including its flexibility, which allows engineers to obtain higher initial rates while optimizing life-of-well production.

- Examples of how "conventional" design techniques may be limiting the effectiveness of a gas lift system, while outside-the-box completion options are expanding gas lift's normal operating window.

For hydraulic lift, attendees will learn about and discuss:

- The basics (how it works, its performance, system response, components, configurations, proper operation).
- Specific application topics, especially with regards to early production.

CORBIN MOZISKE



Corbin Moziske is the US Gas Lift Technical Advisor for Liberty Lift Solutions. He provides clients with customized solutions to their specific gas lift programs. He began his career in the field and has over 11 years of experience focused mainly in gas lift. He holds a BS degree from The University of Houston.

OSMAN A. NUNEZ-PINO



Osman A. Nunez-Pino is a Hydraulic Lift Applications Engineer for Liberty Lift Solutions. He holds a BS in mechanical engineering from La Universidad del Zulia in Maracaibo, Venezuela. He has published technical papers with SPE, co-authored technical articles about hydraulic lift systems, and served as an instructor of hydraulic lift technology around the world.

EVENT INFO

WHEN

Wednesday
April 11, 2018
6:30 – 8:00pm

SPEAKERS

Corbin Moziske
US Gas Lift Technical Advisor
Liberty Lift Solutions

Osman A. Nunez-Pino
Hydraulic Lift Applications Engineer
Liberty Lift Solutions

LOCATION

Chevron Office
1400 Smith St
Houston, TX 77002

REGISTER ONLINE

YOUNG PROFESSIONALS

Volunteering at The Beacon



Please join SPE-GCS Young Professionals in their support of The Beacon, a nonprofit organization helping the poor and homeless populations of the Houston area. Since opening in 2007, the Beacon has grown from serving 80 clients per day to serving 600-800 clients daily

in four core programs: The Beacon Day Center, Cathedral Clinic at The Beacon, Brigid's Hope at The Beacon, and Cathedral Justice Project at The Beacon. These four programs come together under one roof to provide meals, showers, laundry service, case management, medical and psychiatric care, pro bono legal services, and pastoral care.

Volunteers will prepare and serve meals and help with the laundry.

EVENT INFO

WHEN

Sun, April 15, 2018
10:30am – 2:00pm

LOCATION

The Beacon
John S. Dunn Outreach Center
1212 Prairie St
Houston, TX 77002

CONTACT

Mollie Garvey
garvey906@gmail.com

[REGISTER ONLINE](#)

YOUNG PROFESSIONALS

The Digital Oilfield



THE BOSTON CONSULTING GROUP

The digital oilfield is a complex ecosystem of operators, oilfield service companies, and technology entrants, both startups and established industry titans. Digital is changing the way customers, suppliers and employees interact, creating new business models, attracting new players and increasing competition.

Please join us to:

- Learn about BCG's view on the 12 digital domains reshaping the energy world.
- Deep dive into digital case studies from real BCG client engagements.
- Hear how BCG is contributing to the digital oilfield transformation.
- Discuss hot topics facing the digital oilfield today and into the future.

This event is sponsored by Boston Consulting Group.

EVENT INFO

WHEN

Thursday
April 26, 2018
5:30 – 7:30pm

LOCATION

Boston Consulting Group
1221 McKinney St, Ste 3000
Houston, TX 77010

CONTACT

Eric Kinsey Regel
504-920-8392
eregel@gateinc.com

[REGISTER ONLINE](#)

YOUNG PROFESSIONALS

Introduce a Girl to Engineering Day at Rice University



In partnership with the Society of Women Engineers Houston and Rice University chapters, SPE-GCS Young Professionals invite you to Introduce a Girl to Engineering Day at Rice University. We will be teaching oil and

gas engineering through hands-on experiments and contests.

Volunteers will assist teams of seventh- to ninth-graders in activities that teach design, planning, the scientific method, and the application of energy and oil and gas principles like density, pressure and porosity.

The morning shift is 8:30am-12:00pm, and the afternoon shift is 12:00 to 4:00pm. Volunteers are encouraged to participate in both shifts if their schedule permits.

EVENT INFO

WHEN

Sat, May 5, 2018
8:30am – 12:00pm and
12:00pm – 4:00pm

LOCATION

Rice University
6100 Main St, Houston, TX 77005

CONTACT

Mollie Garvey
garvey906@gmail.com

REGISTER ONLINE

Delivering stage production insight to enhance recovery and reduce costs.

Tracerco
Providing Insight Onsite

Frac smart, produce more, with Frac Tracers.

A Tracer Production Log™ gives you long-term data to help you plan your next well.

- Drill smarter – higher yields to lower costs
- Optimize well spacing and well trajectory
- Compare geology with oil and gas productivity
- Assess stimulation design effectiveness
- Determine clean out efficiency

Frac smart, recover more with Tracerco technologies.

www.tracerco.com/reservoir-characterisation
T: +1 281 291 7769 | E: tracerco@tracerco.com

WHERE ARE THEY NOW?

Past Scholarship Winner: Scott Joyce

The Scholarship Committee conducted a survey of past recipients of the SPE-GCS scholarship. If you're considering donating to the SPE-GCS scholarship fund or hiring an SPE-GCS scholarship winner, you'll be glad to know that the program has enjoyed considerable success over the past six decades. Here is Scott Joyce's story:

"My favorite college memories include summer internships where I applied my new engineering knowledge in commercial, real-world settings."

As a roustabout for Conoco, based in Carlsbad, NM, I fell in love with the oil and gas industry. I had an opportunity after my daily responsibilities to spend time on a drilling rig, where I learned all about the drilling process (vertical wells back then!)

My junior summer was spent in Mont Belvieu, TX, at a gas fractionator owned by a subsidiary of Chevron. I helped fix some cooling tower problems, and I

worked on startup preparations for a butane isomerization facility. Finally, I worked for BP in Prudhoe Bay, AK. I learned a lot about topside facilities and equipment that summer, and I enjoyed the great Alaskan outdoors!

After graduation, I worked outside of the oil and gas industry for several years and earned my MBA. After completion of my MBA, I went back to the industry I love in 2000 as an energy banker in Houston. I've worked for Bank of America, The Royal Bank of Scotland, and BNP Paribas. I current head Capital One's Energy Technical Services and Special Assets teams, as well as credit risk management for energy and other industries.

The SPE-GCS scholarship allowed me to finish my mechanical engineering degree without having to work as much during the school year. My advice to students is to keep your minds open. The current recovery in the commodity markets should open up opportunities. Those opportunities may not be exactly what you expect, but your career will likely take many twists and turns, and there are many paths to success in the oil



CAREER OVERVIEW

Credit Risk Executive at Energy, Capital One

- Katy Taylor High School – 1990
- Texas A&M University – College Station, BS in Mechanical Engineering
- University of California - Berkeley, MBA

scott.joyce@capitalone.com

and gas business! You may not be able to do exactly what you want to do right out of school, but look for opportunities to learn and add value. For the first several years of your career, I recommend seeking opportunities that expand your future career options. It takes a while to really figure out "what you want to be when you grow up"!



CONTRIBUTE TO THE SPE-GCS SCHOLARSHIP FUND TODAY!

DONATE



2018 SPE Gulf Coast Section Awards and Scholarships Banquet



WHEN:

Thurs, May 24, 2018
5:30pm – 10:00pm

WHERE:

HESS Club
5430 Westheimer Rd
Houston, TX 77056

KEYNOTE

SPEAKER:

Tom Blasingame,
Texas A&M University

Join the SPE Gulf Coast Section as we celebrate another year of student success, emerging professionals, established industry leaders, and longtime members and supporters!

**REGISTER
ONLINE**

PROFESSIONAL REGISTRATION REVIEW COURSES FOR PETROLEUM ENGINEERING

The Courses cover topics on the Texas State Board Petroleum Engineering Professional Examination.

2018 HOUSTON COURSES

I August 20 – 24, 2018

II October 8 – 12, 2018

MORE INFORMATION:

PHONE: 405-822-6761
E-MAIL: bingwines@cox.net
WEBSITE: winrockengineering.com
WEBSITE E-MAIL: winrockpe@gmail.com

NEED PROJECT AND VENDOR MANAGEMENT SUPPORT?

Be prepared by aligning with an on-demand documentation & business/project support provider

- ✓ *Project/vendor management support*
- ✓ *Tech writing & document control*
- ✓ *Overhead cost reduced*
- ✓ *Operational efficiency improved*
- ✓ *Small/startup companies can compete with larger companies*

ZAETRIC®

Technical Writing – Business/Project Support - Printing/Binding
281 298 1878 www.zaetric.com

UNIVERSITY of HOUSTON | ENGINEERING

GRADUATE CERTIFICATE PROGRAM

UNCONVENTIONAL ENERGY SOURCES

The certificate program in unconventional energy sources is a specialized certification to meet the oil industry's current demand for professionals with better understanding of the exploitation and performance of unconventional resources. Tailored for working engineers, courses can be viewed at students' convenience. Online meet-ups and discussions between students and professors provide additional guidance and interaction.

Why the University of Houston?

Located in the Energy Capital of the World, the University of Houston is arguably the best place to pursue a certificate or a degree in petroleum engineering. Houston is home to more energy professionals than any other city in the world. The UH petroleum engineering department is the largest program in the Cullen College of Engineering, underlining the ever-growing demand for a highly skilled petroleum engineering workforce in Houston and beyond.

Courses and Curriculum

Students take four required courses:

PETR 6332

Reserves Estimation I

PETR 6318

Special Topic: Horizontal Drilling

PETR 6330

Fundamentals of Hydraulic Fracturing

PETR 6397

Unconventional Reservoirs

View descriptions of the courses listed above and all graduate petroleum engineering in the [UH Graduate Catalog](#).

For more information on UH Engineering's certificate programs, please visit www.egr.uh.edu/certificate-programs.



North American Student Symposium



During the North America Student Symposium in February at LSU, all members in attendance gained great insight into Big Data technology. The symposium also hosted the regional PetroBowl competition, where the Texas A&M team competed against universities from across the nation. Our members extend a thank-you to all who helped organize this exciting event.

Another event we look forward to every year is Aggieland Saturday, which took place February 10. This is one of the largest recruiting events not only for petroleum engineering, but also for Texas A&M University as a whole. Our members gave tours and presentations to numerous prospective students and their families.

Pictured, Members of Texas A&M SPE at NASS 2018 (from left: Ravi Lad, Jordan Argamany, William Nelson, Kyle Soares, Meaghan Anderson, Magy Avedissian)



North American Student Symposium

Our trip to the North American Student Symposium was a great opportunity for our members to gain practical knowledge through workshops and to meet members from other student chapters.

The following students placed in the symposium's paper contest:

PHD DIVISION

- 1st Clara Palencia
- 2nd Mohab Dessouki
- 3rd (tie) Huy Tran and Yuan-Yun Lin

MASTER'S DIVISION

- 1st Dutt Tripathi
- 2nd Sunit Mathur
- 3rd Jude Rodrigues

BACHELOR'S OF SCIENCE DIVISION

- 1st Diego Barrera

Congratulations to everyone on their noteworthy efforts. Additionally, UHSPE thanks our host, the LSU student chapter, for providing a wonderful experience.

STUDENT CHAPTER DIRECTORY

HOUSTON COMMUNITY COLLEGE

Aileen Lu: aileen.business.us@gmail.com

RICE UNIVERSITY

Eric Vavra: edvi@rice.edu

TEXAS A&M UNIVERSITY

Jordan Argamany: j.argamany@tamu.edu

UNIVERSITY OF HOUSTON

Tony Nowak: president.uhspe@gmail.com

PRAIRIE VIEW A&M

Natalie Russell: natalie.russell789@gmail.com

Take Control of Frac Sand Dust Now

Hexion's Sentinel™ dust suppressant technology helps reduce the amount of respirable silica on location. This low-cost solution is designed to reduce levels below the new OSHA action level of 25 µg/m³. The versatile application method allows users to apply the product at the sand mine, transload or at the frac site.

Visit us at hexion.com/sentinel



HEXION
Helping you make it today's world

SIMPLIFY Your Sand Supply



- MINE...** Premium Northern White along with sand from the Permian's first in-basin facility.
- MOVE...** Proppant through our strategically located, owned and operated, in-basin terminal network.
- MANAGE...** Reliable delivery of proppant the last mile to the well site, safely and efficiently, any way you need it with PropStream™.

HI CRUSH
Performance Under Pressure

Hi-Crush can *Simplify Your Sand Supply*. Learn more at HiCrush.com/propstream

CONNECT



Promote your business in Connect & reach over 16k oil & gas industry influencers every month! SPE-GCS always hits your target audience.

EMAIL OUR ADVERTISING COORDINATOR

FUSION

50,000+ bwpd INJECTION RATE

FUSION proppant consolidation technology is the only stimulation and sand control solution that met major operators' requirements to sustain long-term proppant pack integrity, withstand stress cycling and allow the ultra-high 50,000+ bwpd injection rate needed for their GOM wells.

Additionally, FUSION technology can be employed for stimulation and enhanced sand control in producing wells.

The numbers speak for themselves

For more unique technologies to improve your production, ROI and EUR numbers, talk to CARBO.

Read the full story
carboceramics.com/injection

CARBO
Production. Enhanced.