



Leviathan Field Development
A Safe, Reliable, Environmentally Responsible Gas Supply

Navigating the Challenges of Major Project Execution

Brian Hogan



*Energizing the World,
Bettering People's Lives™*

Forward Looking Statement



This presentation has been prepared by Noble Energy Inc (“Noble”) exclusively for the recipient’s benefit and internal use.

In preparing this document, information available from public sources has been used. No express or implied representation or warranty as to the accuracy or completeness of such information is made by Noble or any other party.

The contents of this document are subject to amendment or change at any time. Noble has not independently verified information obtained from external sources. Noble does not take nor will accept any responsibility or liability (express or implied) for any errors, omissions or misstatements or for the consequences arising from the use of the information contained in this document.

Any views, opinions or conclusions contained in this document are indicative only, are not based on independent research and do not represent any commitment from Noble.

The merits or suitability or benefit of any transaction described in this document to the recipient's particular situation should be independently determined by the recipient and any decision to proceed with any transaction described in this document shall be the sole responsibility of the recipient. Any such decision should involve an assessment of the legal, tax, accounting, regulatory, financial, technical, commercial, credit and other related aspects of any such transaction, based on such information and advice from the recipient's own professional advisers and such other experts as the recipient deems relevant. Noble shall not be liable for the content of, or any failure by the recipient to obtain, such information and advice. The recipient's attention is drawn to the fact that its tax treatment depends on its particular situation and may change in the future.

This document is to be treated in the strictest confidence and is not to be disclosed directly or indirectly to any third party. It is not to be reproduced in whole or in part, nor used for any purpose except as expressly authorized by Noble.

Furthermore, this presentation contains certain “forward-looking statements” within the meaning of the federal securities law. Words such as “anticipates,” “believes,” “expects,” “intends,” “will,” “should,” “may,” “estimate,” and similar expressions may be used to identify forward-looking statements. Forward-looking statements are not statements of historical fact and reflect current views about future events. They include estimates of oil and natural gas reserves and resources, estimates of future production, assumptions regarding future oil and natural gas pricing, planned drilling activity, future results of operations, projected cash flow and liquidity, business strategy and other plans and objectives for future operations. No assurances can be given that the forward-looking statements contained in this presentation will occur as projected, and actual results may differ materially from those projected. Forward-looking statements are based on current expectations, estimates and assumptions that involve a number of risks and uncertainties that could cause actual results to differ materially from those projected. These risks include, without limitation, the volatility in commodity prices for crude oil and natural gas, the presence or recoverability of estimated reserves, the ability to replace reserves, environmental risks, drilling and operating risks, exploration and development risks, competition, government regulation or other actions, the ability of management to execute its plans to meet its goals and other risks inherent in Noble’s business that are discussed in its most recent Form 10-K and in other reports on file with the Securities and Exchange Commission (“SEC”). Noble does not assume any obligation to update forward-looking statements should circumstances or estimates or opinions change.



Noble's History in the Eastern Mediterranean



Sustained and Committed Regional Presence – 40 TCF of Discovered Resources



1999 Noa discovery

2000 Mari-B discovery

2004 **First production from Mari-B**

2009 Tamar discovery
Dalit discovery

2010 Leviathan discovery

2011 Aphrodite (Cyprus) discovery

2012 Tanin discovery
Dolphin discovery
Pinnacles discovery

2013 Karish discovery
Tamar SW discovery

2017 Leviathan Sanction



Eastern Mediterranean Demand

World-class resources in a high-demand region

➤ Tamar 11 Tcfe and Leviathan 22 Tcfe Gross Recoverable Resources

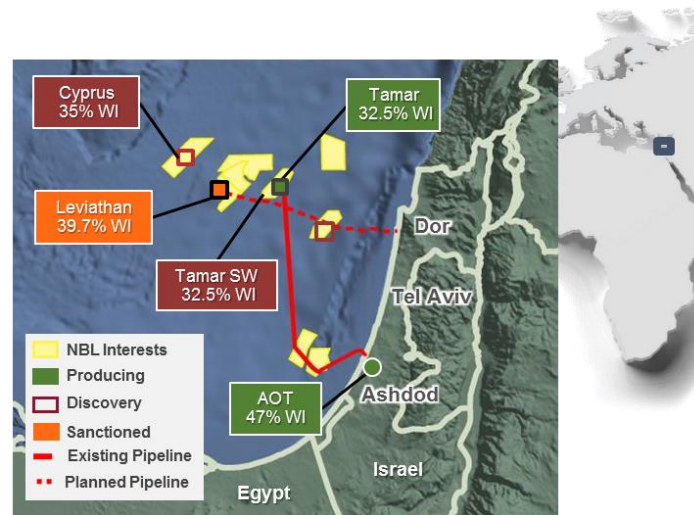
- Tamar currently supplying up to 60% of Israel power generation
- High natural gas demand leading to record Tamar sales volumes

➤ Potential to Expand Ultimate Gross Capacity to Over 4 Bcf/d

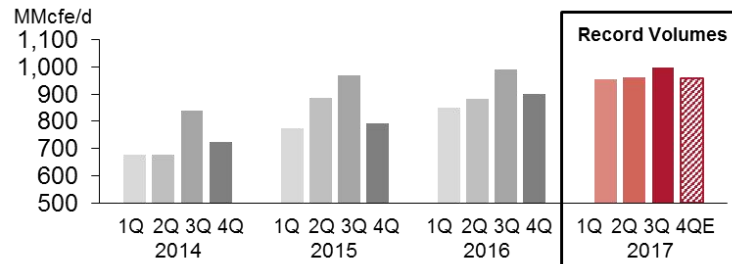
- Tamar current capacity >1.1 Bcf/d; assessing expansion opportunities
- Leviathan ultimate capacity of 2.1 Bcf/d through cost advantaged expansion

➤ Tamar Generates ~\$400 MM Operating Cash Flow to NBL Annually

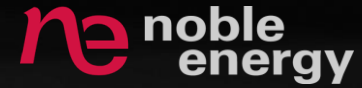
- Margins competitive with U.S. oil plays



Quarterly Israel Gross Sales Volumes



AT A GLANCE



LEVIATHAN DEVELOPMENT

The Leviathan Field is located in the I/15 Leviathan North and I/14 Leviathan South leases, approximately 125 km west of Haifa, Israel, and 35 km west of the Tamar Field in the Eastern Mediterranean Levantine Basin.

The initial phase of development will supply gas to the Israeli domestic market and the region. The field will be produced via subsea wells tied back 115 km to a fixed platform located 10 km off the coast from Dor in 86 m water depth.

The Subsea and Host facilities are designed to accommodate a future expansion which will increase the capacity to 2,100 MMSCFD.

22 TCF ESTIMATED RESERVES

5500 FEET WATER DEPTH AT WELLS

1,200 MMSCFD PRODUCTION CAPACITY

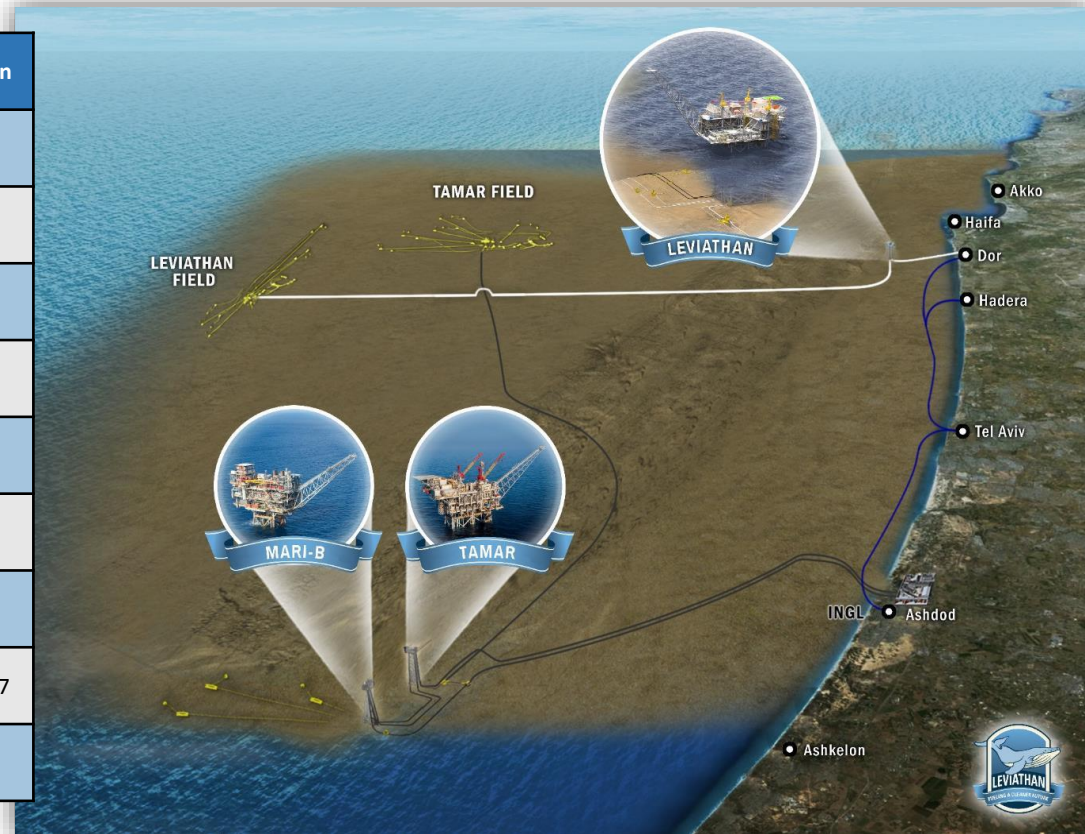
41,600 TONS DECK WEIGHT

34 MONTHS SANCTION TO FIRST GAS



Israel Development Overview

Description	Mari-B	Tamar	Leviathan
Year of First Gas	2003	2013	2019
Installed Capacity (MMscfd)	600	1,200	1,200
Water Depth at Platform (ft)	778	778	282
Water Depth at Wells (ft)	Platform Wells	5,500	5,500
Tieback Distance (miles)	1	93	73
Deck Weight (tons)	5,200	14,300	41,600
Jacket Weight (tons)	14,800	22,000	17,100
Deck Size (ft)	112 x 194	125 x 217	337 x 257
Onshore Area (acres)	8	10	< 1



Leviathan Wells to Delivery Point



Subsea Facts

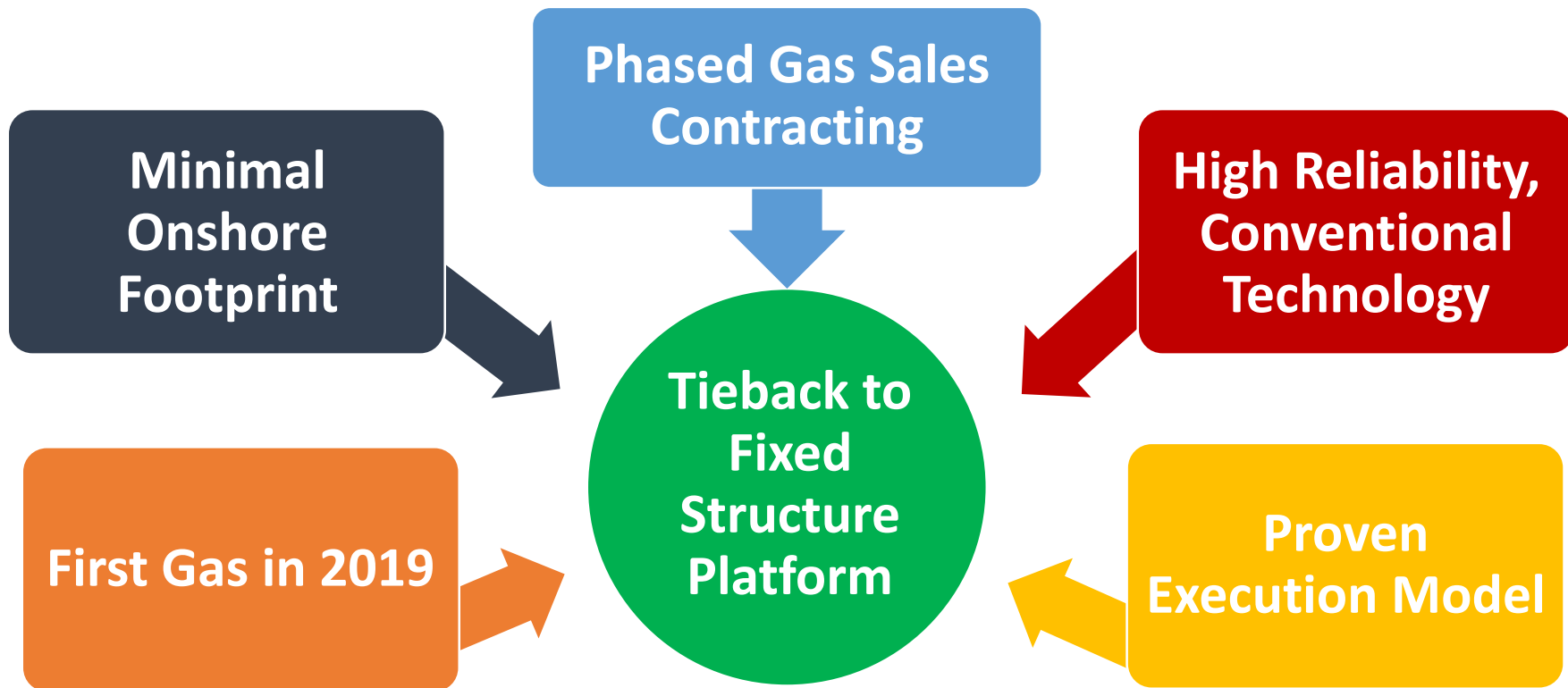
- **4 wells capable of over 300 MMSCFD/each**
- **1,200 MMSCFD Capacity; Expandable to 2,100 MMSCFD**
- **117,000 tons (351 miles) of Line Pipe**
- **92 miles of Umbilicals**
- **430 ton Production Manifold**
- **Approximately 400 Induction Bends**

Host Facility Facts

- **1,200 MMSCFD capacity; Expandable to 2,100 MMSCFD**
- **337 ft x 257 ft Deck**
- **10,000 valves**
- **33 miles of pipe**
- **264 miles of cable**
- **17,100 tons - Jacket Weight**
- **41,600 tons – Deck Weight**

Challenge: Development Plan

The Development Plan needed to address several Key Criteria:



Challenge: Vendor Execution

Significant challenges driven by the 2014 downturn...

Staffing

High Staff Turnover

Reduced Staff Levels

Assess PMT experience and history with company

Assess risk with competing work

Commitment of PMT personnel

Subcontractors

High Staff Turnover

Reduced Staff Levels

Assess PMT experience and history with company

Assess risk with competing work

Verify receipt of payments

Financial Stability

Low backlog to maintain stability

Assessment of work backlog

Thorough credit assessment

Continuous monitoring of financial stability

Challenge: Stakeholder Engagement

Key to Successful Execution at Industry Leading Pace

Early Integration of Key Stakeholders

Executive
Operations
EHS
Quality
Regulatory
Marketing

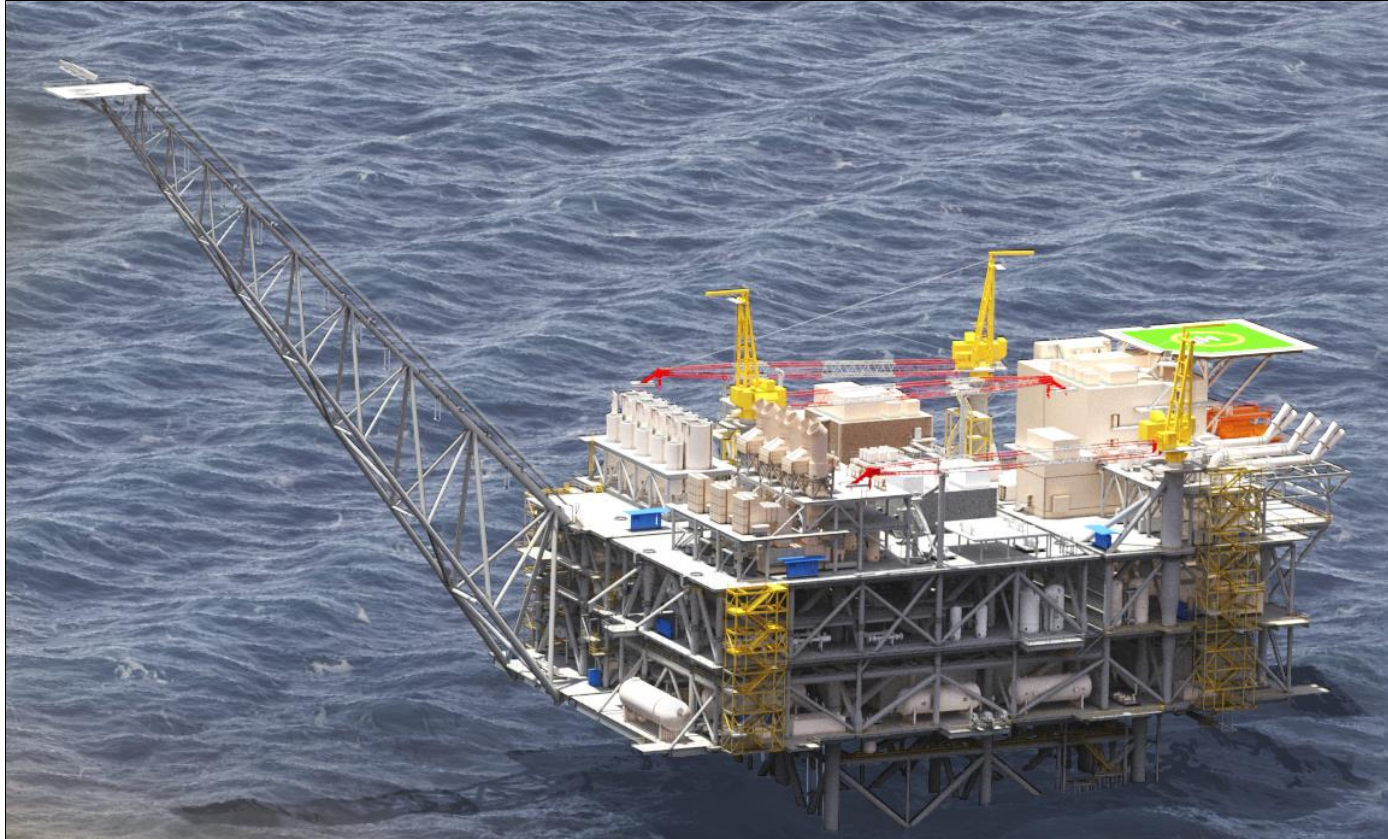
Empower Teams to Make Decisions

Increased efficiency in
decision making
Drives ownership of work
scopes

Executive Engagement

Includes Vendor & Owner
Supports continuous
alignment
Drive ownership
throughout organizations

Future: Regional Export



Conclusion

- **Opportunity to change a Region**
- **Global Execution involving great Suppliers & Contractors**
- **Focus on Safety, Quality and Efficient Execution**
- **Energizing the World, Bettering People's Lives**

Coastal Valve Station

Dor Valve Station



Questions?

Coastal Valve Station

Dor Valve Station

