



Gulf Coast Section

NOVEMBER
2016

CONNECT

SPE GULF COAST SECTION NEWSLETTER

METHOD FOR PORE PRESSURE ESTIMATION USING MECHANICAL SPECIFIC ENERGY AND DRILLING EFFICIENCY

DRILLING P. 15

OIL OUTLOOK 2017: THE SONG REMAINS THE SAME

GENERAL MEETING P. 20

OKLAHOMA RESPONSE TO INDUCED SEISMICITY BY SECRETARY TEAGUE

WATER AND WASTE MANAGEMENT P. 21

US SHALE PLAY REVOLUTION IMPACTS ON DEEPWATER DEVELOPMENT AND GLOBAL ENERGY LANDSCAPE

PF&C P. 17

OIL PATCH ORIENTATION

CONTINUING EDUCATION/CAREER MANAGEMENT

P. 22

SPEGCS.ORG



CHAIR'S CORNER

DEEPAK M. GALA, SHELL

2016-2017 SPE-GCS Chair



Inclusiveness is essential in an increasingly globalized world. I like to say that Houston is “local yet global” because of the diversity that we enjoy. To prepare for this column, I examined SPE’s performance when it comes to gender inclusiveness in leadership. Reports on public companies’ inclusiveness are available; however, very little has been published for non-profit and professional organizations.

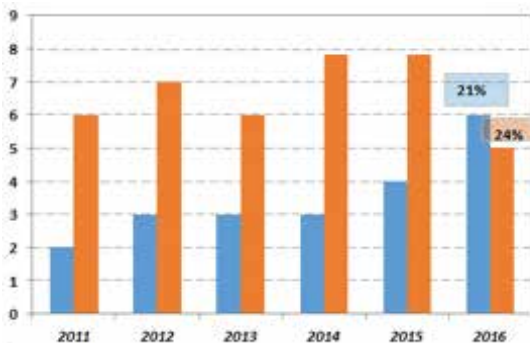
The benefits of an inclusive workplace have been researched and published in *Harvard Business Review* and other journals, and they apply to for-profit as well as non-profit groups and professional organizations such as SPE. Inclusive groups attract and retain talent, can serve increasingly varied customer bases, have stronger brands and reputations, and achieve enhanced business performance. Some companies set specific targets or quotas for female representation in recruiting and talent development to gain strategic benefits in the long run.

CEO Ben van Beurden from Shell, the company for which I work, recently signed the call to action on “Closing the Gender Gap in Oil & Gas” at the World Economic Forum in Davos. Shell supports its guiding principles and is already putting them into practice. Over 40% of Shell’s graduate intake is now female, and women now fill 19% of our senior leadership roles. This is not limited to technical roles.

Many organizations make strong efforts to achieve greater gender diversity during recruiting for entry-level positions. Female representation can be diminished rapidly within the first few promotion cycles. It is important for companies to maintain focus on inclusion for employees at each stage throughout their career paths so that the company has access to the talents of all qualified women and men at senior levels in the organization.

When I looked at the SPE data on female representation, I was pleasantly surprised and encouraged. Female members are represented on the SPEI Board of Directors (21%) and our local GCS Board of Directors (24%).

The dataset below charts the number of female members at board level for SPEI and GCS. The trend has improved as the number of women entering in the oil and gas industry increased in recent years. Flexible working options and corporate targets for collaborating externally also contributed to the rise in the number of women in these roles.



Number of Female Members on SPEI and GCS Boards

GCS board, study group, and committee roles are voluntary leadership positions, and women and men are encouraged to participate. The strong participation by female members seems to indicate that SPEI and GCS have cultures in which all volunteers feel engaged, involved, respected and

connected which provides a true competitive advantage.

As an SPE-GCS officer, I feel indebted to the work of previous leaders in tackling gender issues. To continue the good work, I encourage more women to volunteer for

SPE at the leadership level. We must keep this momentum going. I believe that inclusiveness irrespective of the gender is not only the right thing to do but also the smart thing to do.

SPE-GCS Update

Our Section continues to have strong attendance for its events, and below are three recent examples. In September, the International Study Group, under the leadership of Mary Beth Snodgrass and her team, presented a program discussing the Production Sharing Agreement signed between Talos and Mexico. Loren Long, a petroleum engineer for over 20 years and Managing Director-Mexico at Talos Energy, discussed the bid and the award of two tracts in shallow waters of the Gulf of Mexico. Loren discussed the 15% local requirement and how they plan to accomplish that via purchasing casing and fuel from Mexico. He also reflected about the historical bidding process and how he expects Talos to compete with larger companies in future rounds. Almost 100 professionals attended.

In October, the Permian Basin Study Group, under the leadership of Amy Timmons and her team, presented a panel session on state of the Permian Basin. The panelists were from Occidental, Halliburton and Conoco Phillips. Another event in October was the inaugural Mergers, Acquisitions & Divestments Symposium under the leadership of David Pantoja and his team, the Business Development Study Group. Over 75 professionals attended the event. The workshop welcomes young and mid-career professionals to the commercial and transactional side of the oil and gas industry.

Stay engaged, stay safe,

M. Gala

November 2016

CONTENTS

STUDY GROUPS

- 9 Research & Development**
11.3.16
Induced Seismicity: Does Hydraulic Fracturing Cause Earthquakes?
- 11 Northside**
11.8.16
A Scientific Approach to Developing Unproven Eagle Ford Acreage
- 12 HSSE-SR**
11.8.16
Shell Road Transport Safety Program
- 13 Reservoir**
11.8.16
Accelerating the Field Development Planning Process With Data-Driven Technologies
- 15 Drilling**
11.9.16
Method for Pore Pressure Estimation Using Mechanical Specific Energy and Drilling Efficiency
- 16 Westside**
11.9.16
An Integrated Approach to Candidate Selection for Refracturing Success
- 17 General Meeting**
11.12.16
Oil Outlook 2017: The Song Remains the Same
- 18 Projects, Facilities & Construction**
11.15.16
US Shale Play Revolution Impacts on Deepwater Development and Global Energy Landscape

- 19 Permian Basin**
11.15.16
Using Hydraulic Jet Pumps as an Economic Alternative to ESPs
- 20 Business Development**
11.16.16
Managing Price & Revenue Risk Amid Heightened Market Uncertainty
- 21 Water and Waste Management**
11.16.16
Oklahoma Response to Induced Seismicity, by Secretary Teague

COMMITTEES

- 22 Continuing Education/Career Management**
11.3.16
Oil Patch Orientation
- 22 Young Professionals**
11.5.16
Houston Heart Walk
- 23 Auxiliary**
11.11.16
Informal Lunch: Rio Ranch
- 23 Education**
11.8.16
2016 Annual SPE-GCS Petroleum Engineering High School Recruiting Fair
- 24 Education**
Where Are They Now: Oliver Wilson
- 24 Education**
Scholarship Fund Update

MORE

- 25 Members in Transition (MiT)**
11.4.16
10th Seminar Series
- 26 Special Announcements**
SPE-GCS Entrepreneurship Cell Launched to Integrate the Oil and Gas Innovation Ecosystem

Chevron Receives 2016 SPE Gulf Coast Region Corporate Supporter Award

IN EVERY ISSUE

- 5 Volunteer Spotlight**
Jessica Badger
Obiajulu J. Isebor
- 6 Then & Now**
Buddy Woodroof
- 27 Event Recap**
Emerging Engineers Conference
- 29 SPE-GCS Student Chapter Section**
Rice
TAMU
University of Houston
- 30 SPE-GCS Directory**

BOARD OF DIRECTORS MEETING
THURSDAY, NOVEMBER 17 | 7:30 TO 10:30 AM | HOUSTON SPE OFFICE



Navigate uncertain times.
Rethink how you work.

Entero[®] MOSAIC[™]

Reserves, Economics, and Decline Software

Isn't it time to stop manipulating data through the backend, creating manual queries to report in Excel, questioning your application security, getting frustrated with poor scenario comparisons, or using 3rd party tools to enter and edit data?

Entero MOSAIC delivers *ASSET INTELLIGENCE* to help you do your work faster, with less effort. It is **one comprehensive solution** that supports corporate, project, and well level processes for reserves, economics, and declines.

- ◊ **EFFICIENCY:** Experience up to 50% in productivity gains
- ◊ **SPEED:** Go from weeks to hours in entry, editing, evaluating, reconciling, and reporting
- ◊ **INTEGRITY:** Have confidence in your data with better visibility
- ◊ **TRUST:** Improve security through role based user/data management
- ◊ **INSIGHT:** Built-in stored results with scenario comparisons at the portfolio level

Learn more at www.entero.com/mosaic, or call toll-free at 877.261.1820.

entero
energy software



SPE-GCS VOLUNTEER SPOTLIGHT

This month the SPE Gulf Coast Section is excited to feature Jessica Badger and Obiajulu (Obi) Isebor as Volunteers of the Month.



JESSICA BADGER

Jessica joined SPE in 2014, not long after starting her first job in the oil and gas industry. Shortly after joining, Jessica reached out to the Membership Committee Chair to find out how to get more involved. As it turned out, the Membership Committee was looking for help and happened to be a great fit for Jessica. Through her involvement with the Membership Committee, Jessica has served in numerous capacities and built many new friendships.

The encouragement of co-workers and the desire to learn more about an industry entirely new to her got Jessica involved in SPE. She is the Marketing Specialist at Corrosion Resistant Alloys, where she builds brand recognition for the just-in-time mill manufacturer of high-quality corrosion-resistant alloy tubulars. She earned her bachelor of business administration degree in marketing and corporate communications from Southern Methodist University.

Jessica says: "Volunteering with SPE is an excellent opportunity to use whatever skills you have to help this community of people do great things for the industry, for education, and for each other – and meet some great people in the process! I would highly recommend it to anyone looking to get more involved in the oil and gas community."



OBIAJULU J. ISEBOR

Obi's involvement with SPE goes back to his grad school days at Stanford University, when he served as Secretary for the student chapter, presented at SPE conferences, and even won the PhD Student Paper Contest at the 2013 SPE ATCE.

After presenting at the 2014 Reservoir Technology Forum, Obi was so impressed with how well the forum was run that he joined the Reservoir Study Group responsible for organizing the event. The RSG Sponsorship Chair for the past two years, Obi now serves as Program Coordinator. Obi and the other RSG officers organize topics and speakers for the monthly RSG luncheons and the Annual Reservoir Technology Forum.

Obi is a reservoir engineer with three years of experience with BP, working on advanced reservoir simulation and optimization with direct application to fields in several regions. He has a master's in petroleum engineering and a PhD in energy resources engineering, both from Stanford.

As a volunteer, Obi is motivated by the need to give back to a society that has given him so much, both as a student and a professional. He feels the need to set a good example and to be a mentor to students and early professionals, while expanding his own network and continuing to learn from SPE and all the distinguished knowledge it houses. What he enjoys most about volunteering is the people he works with – the selfless individuals who give their time and energy to create an environment for professional networking, knowledge management and dissemination in order to increase the competence of professionals and students alike, in an industry that is uncertain and constantly under pressure. Obi believes SPE runs on the fuel provided by these people.

THANK YOU BOTH FOR ALL THAT YOU DO FOR SPE!

THEN & NOW

COLUMN BY BUDDY WOODROOF

NOVEMBER

1956

Try your luck at this true-or-false oil finder IQ test, circa 1956 (See History Quiz):

- 1) Oil production usually occurs on the up-thrown or landward side of the Gulf Coast down-to-the-coast faults.
- 2) Salt domes usually have several different producing horizons.
- 3) Reef structures often appear to intensify with depth on seismic cross sections.
- 4) In the Mid-Continent, microstructures normally are high-relief anticlines.
- 5) Salt domes are known for their high reserves and long producing life.
- 6) Refraction surveys give a detailed picture of the subsurface.

**East Texas crude oil - \$2.90/bbl;
US active rig count - 2,542**

NOVEMBER

1976

A deal is near between the British Aircraft Corp. and the National Iranian Oil Co. in which the BAC is to supply its Rapier missile system to Iran in return for about 16,000 bbl/day of crude over a six-year period.

E&P companies reporting third-quarter profit gains include Standard of California, Gulf, Standard of Indiana, ARCO, and Standard of Ohio. (Reminds me of that old folk song ...“Where Have All the Flowers Gone?”)

US and Canadian energy officials are discussing a joint venture involving the use of abandoned coal mines on Belle Island, Newfoundland, for the storage of approximately 100 million bbl of crude or products.

President-elect Jimmy Carter and the new Congress will be forced to make a quick decision on price-decontrol for gasoline, the last major petroleum product still under price controls.

US active rig count - 1,818

NOVEMBER

1996

Cambridge Energy Research Associates reports that the E&P industry spends an average of \$6 billion per year on IT, or approximately 25 cents for every bbl produced.

Texaco unveils a massive restructuring plan to include the creation of separate business units under newly realigned upstream and downstream operations; the formation of a worldwide natural gas and power group and worldwide lubricants group; and the formation of leadership councils designed to share information, speed decision-making, allocate resources, and monitor progress along business lines. (Six years later, Texaco merges with Chevron!)

Brazil moves closer to privatizing its state petroleum company Petrobras under a National Petroleum Agency overseer.

Despite rumors of Gazprom's financial troubles and political instability stemming from President Boris Yeltsin's health problems, demand for shares in Russia's largest firm exceeds all expectations.

**Light sweet crude oil - \$22.89/bbl;
natural gas - \$2.73/MMbtu;
US active rig count - 838**

THE REST OF THE YARN

This month, we attempt an overview of Teddy Roosevelt's presidency.

Roosevelt was a contemporary of Sigmund Freud, but a less self-analytical man would be hard to imagine. He was outer-directed in every way and keenly receptive to the possibilities of the moment. Henry Adams, the most subtle mind of Roosevelt's day, was exactly right when he called him “pure act.”

TR entered the White House after three decades during which Congress had consistently had the upper hand over the president. He lost no time in making it plain that he was a different breed. The “imperial presidencies” that followed, from those of FDR to Lyndon Johnson to George W. Bush, all owe something to his example.

When Congress did nothing to curb the power of the trusts — huge

monopolistic corporations — Roosevelt simply directed his Justice Department to start bringing suits. When Congress balked at embarking on the Panama Canal, Teddy found a way to go forward. “I took the Isthmus,” he later explained, “started the canal and then left Congress — not to debate the canal, but to debate me.” He added dryly, “But while the debate goes on, the canal does too.” No one would ever have to wonder what he meant when he said, “While president, I have been president — emphatically.”

He did everything emphatically. Above all, he had a supreme sense of the great future in store for the US. No one was ever more certain of the nation's destiny. Few presidents have been more formidable in shaping it. More than that, he gave the nation a picture of itself as a place that

could not fail to succeed, because it produced people who were vigorous and commanding — people like Theodore Roosevelt. It's not just that he was excited to be an American. He made it more exciting to be one.

Next month, some of TR's famous sayings that are commonplace today.

THEN & NOW
NOVEMBER
QUIZ

Take the oil finder IQ test (see "November 1956") by listing your answers to the six questions as T or F. For example: 1) T, 2) F, 3) T, etc.

**ANSWER TO
OCTOBER'S QUIZ**

The statement should have read: "The new president of Socony Mobil Oil Co. de Venezuela started as a tool dresser (not a roughneck) on a cable-tool rig." The term "roughneck" came after the cable-tool rig era.

SEPTEMBER'S WINNER

Lucas Mezzano

Tenaris

To participate in this month's quiz, e-mail your answer to contest@spe.org by noon November 15. The winner, who will be chosen randomly from all correct answers, will receive a \$50 gift card to a nice restaurant.

**2015 PROFESSIONAL ENGINEERING EXAM
RESULTS FOR PETROLEUM ENGINEERING**

First Timers 61% Second+ Timers 32%
National Average Pass Rate 54%

PE Exam Application Deadline Date: November 1, 2016
Next Petroleum PE Exam Date: November 28, 2016

2016 HOUSTON COURSES
November 22 – 26, November 26 – 30

P: 405-822-6761 | E: bingwines@cox.net
winrockengineeringinc.com

**The latest stator
elastomer technology from
PV Fluid Products!**



**Drive down non-productive time with
drilling solutions that work!!**

- Minimal chemical swell
- Improved stator life in aggressive applications
- Able to maintain higher differential pressures
- Advanced fit philosophy provides broader temperature range
- Reduced chunking failures
- Higher ROP
- Increased bottom line

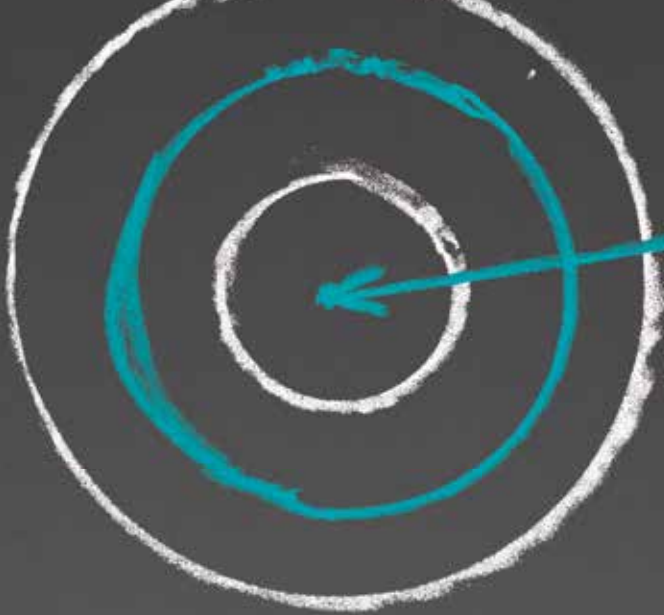


PV Fluid Products
The PROGRESSIVE
rotor and stator company



www.pvfluid.com





YOU CAN MEET
YOUR TARGETS.

OR BE ONE.



It all depends on the accuracy of your production forecast. And no engineering and reserves software delivers accuracy like Value Navigator®.

Nail your forecast. Ace your economics. Perfect your reserves. Boost productivity. Deliver on production targets and netbacks. Happy CEO. Happy investors. Happy you. Val Nav is engineered for results like that – and times like these.

More than 300 of North America's top E&P companies choose Val Nav. Find out why.

Visit energynavigator.com/targets or call Lynn Babec at 1-866-856-9544.



Val Nav®

by ENERGY NAVIGATOR

RESEARCH & DEVELOPMENT

Induced Seismicity: Does Hydraulic Fracturing Cause Earthquakes?

Confusion exists within the oil and gas industry and especially with the general public regarding whether hydraulic fracturing is related to an increase in earthquakes in some areas. This is a fair question because there does appear to be a correlation around high fracking activity, such as in Oklahoma. This presentation takes the latest studies by the USGS and answers this question. It further discusses recommendations to mitigate the earthquake problem, some of which are being implemented.

BRIAN SCHWANITZ



Brian Schwantz is a graduate of Michigan Technological University in applied geophysics. He has worked in the oil field service industry for the past 39 years, having spent 25 years with Schlumberger in various positions and product lines. He is a Welltec Fellow, acting as a senior technical advisor. Schwantz has 36 years as an active SPE member and 22 published SPE papers and trade journal articles. He was an SPE Distinguished Lecturer in 2012-2013. He spent 13 years on the international board of ICoTA (Intervention and Coiled Tubing Association). He serves on the SPE Energy Information Committee. In September, he received the SPE's 2016 Production and Operations Award at the ATCE in Dubai.



EVENT INFO

Thursday 11.3.16

11:30 AM - 1:00 PM

SPEAKER

Brian Schwantz
Senior Technical Advisor
Welltec

LOCATION

Norris Center - Westchase
9990 Richmond Ave, Ste 102
Houston, TX 77042

EVENT CONTACT

Kitty Harvey
281-901-3245
kitty.harvey@c-a-m.com

MEMBERS

\$40/\$50 Walk-In

NON-MEMBERS

\$50

STUDENT/MIT

\$15

MUDPRO
Drilling Mud Reporting Software

Pegasus Vertex, Inc. | Drilling Software
(713)981-5558 | info@pvsoftware.com

PHDWIN™

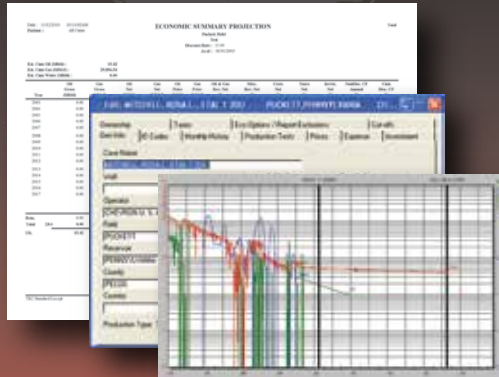
Integrated Economics & Decline Curve Analysis

NOW EVEN MORE POWERFUL WITH

PHDRMS™

Reserves Management System

The *complete solution* for evaluating, managing, and reporting reserves and performance data.



Schedule an **online** presentation **TODAY!**

TRC Consultants, LC 888-248-8062 www.phdwin.com

Visualize the Possibilities



At Petrolink we see things a little more clearly.

You can too with our advanced real-time visualization tools. From customizable displays and collaborative environments to powerful analytics and reporting, we help you spot trends, gain insights and see the potential in your operations.

www.petrolink.com



INWOOD SOLUTIONS, LLC
Enhanced oil recovery • Petroleum engineering

Petroleum Engineering
Enhanced Oil Recovery
Project Management
Profitability Analysis
Reservoir Simulation

Dr. J Roger Hite
Inwood Solutions, LLC
(713) 385-5343
hite@inwood-solutions.com

NORTHSIDE

A Scientific Approach to Developing Unproven Eagle Ford Acreage

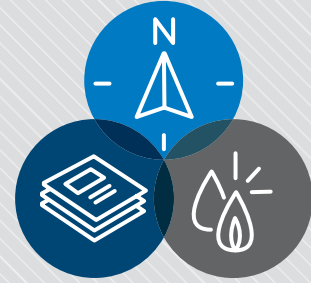
In 2014, when oil was US\$100/bbl, and most core Eagle Ford positions were held by majors or larger independents, Battlecat Oil & Gas implemented a strategy to prove up acreage outside of “the core of the core” of the Eagle Ford shale play. Battlecat Oil & Gas put together an experienced operational team, partnering with Lime Rock Partners, to pursue the project starting in Gonzales County.

The presentation will go in depth examining the EURs, frac designs, lateral placements, and geology of surrounding wells. The story of Bobcat #1, Battlecat’s first Eagle Ford well in the area of interest, will be told, from the leasing of the acreage to the production of the well, including seismic analysis, engineered completion, microseismic and tracer results, and artificial lift methods.

ANDREW FISHER



Andrew Fisher has two years of experience as an engineer at Battlecat Oil & Gas, LLC. He earned his bachelor of science in petroleum engineering from Texas A&M University in 2015.



EVENT INFO

Tuesday 11.8.16
11:30 AM - 1:00 PM

SPEAKER

Andrew Fisher
Petroleum Engineer
Battlecat Oil & Gas

LOCATION

Southwestern Energy Company
10000 Energy Dr
Spring, TX 77389

EVENT CONTACT

Matt Boothe
281-731-3140
matt_boothe@swn.com

MEMBERS

\$40/\$50 Walk-In

NON-MEMBERS

\$50

STUDENTS/MIT/RETIRED SPE

\$15



Is challenging project documentation draining your resources?

WE can help with;

- ✓ Technical Writing
- ✓ Data Book Compilation
- ✓ Project Management
- ✓ Printing & Binding

ZAETRIC® 281-298-1878 www.zaetric.com



EVENT INFO

Tuesday 11.8.16
11:30 AM - 1:00 PM

SPEAKER

Muhammad Owais Sultan
 North America Crude Road
 Transport HSSE Manager
 Shell Trading

LOCATION

Marathon Oil Tower
 5555 San Felipe St
 Houston, TX 77056

EVENT CONTACT

Kathleen Antoine
 (713) 496-5456
 kantoine@hess.com

MEMBERS

\$40/\$50 Walk-In

NON-MEMBERS

\$50

STUDENTS/MIT/RETIRED SPE

\$15

NOTE

Parking is available in the
 Visitor Garage, Levels G-1 and G-2.

HSSE-SR

**Shell Road Transport
 Safety Program**

With a changing business environment, sustainable safety performance is the key for business success. To address a lack of well-defined safety standards, especially in the crude business, Shell Trading (STUSCO) launched its Road Transport Safety program to drive a culture change in the haulers organization and set minimum Road Transport HSSE standards as part of our working partnership.

The primary key to success is to address driver behavior and organizational culture so that safety is not just a slogan, but a core value that is delivered from the top down. The CEO and director levels of our haulers organization must own the safety program and demonstrate visible and felt HSSE leadership to drive the change in safety culture and HSSE performance. Individual road transport KPIs are developed and agreed upon with haulers to ensure performance is monitored and kept on track.

Shell Trading's RT HSSE program sets minimum standards for equipment and driver training that are above industry standards or US DOT requirements. These include items like a robust IVMS system, roll stability control, and defensive driver and fatigue awareness training. Compliance with our standards is checked via a system of hauler audits and field assurance by Shell staff and a selected group of contractors.

MUHAMMAD OWAIS SULTAN



Muhammad Owais Sultan is the North America Crude Road Transport HSSE Manager for Shell Trading, overseeing crude oil trucking in the United States and Canada. A graduate of Ohio State University, he has been with Shell for over 21 years in supply and distribution roles. He began his career with Shell Pakistan Limited in Karachi and has worked in multiple countries. Currently, he is based in Houston. He has worked in local, regional and global roles covering operations management, planning, and strategy. Before his current role, he was the Road Transport Operations Manager for Middle East South Asia, including India, Pakistan, Oman, and Dubai, and turned around HSSE performance in the region.

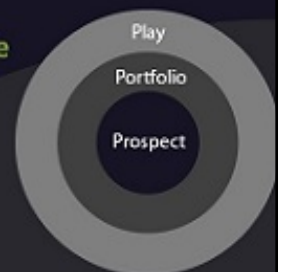
Rose & Associates

Courses Consulting Software

**Unconventional Resource
 Valuation and Assessment Course**
 (3 to 5 days)

UCRA Software
 To model, value and risk
 drilling in resource plays

www.roseassoc.com



RESERVOIR

Accelerating the Field Development Planning Process With Data-Driven Technologies

A data-driven technology for diagnosing reservoir conditions and generating field development plans for mature assets is presented, based on machine learning and automation of standard petroleum engineering workflows, without requiring a full field simulation model. Ideally suited for large, complex oil fields with large data sets (e.g. thousands of wells producing over many decades), these field development plans are prepared within three weeks using this technology to serve as operating plans and reserves basis.

- Phase I (one week): Organizing all well data, including logs, production/injection, completions, etc.
- Phase II (two hours): Automated or machine-assisted workflows for geological mapping, estimating flow contribution by stratigraphic flow unit, decline curve analysis, material balance history matching, fractional flow modeling, drainage area estimation for all wells by flow unit, identifying pay behind pipe, identifying unswept/bypassed oil pockets, and waterflood optimization.
- Phase III (two weeks): Technical validation by senior engineers, during which opportunities that are technically valid with high confidence proceed to economic modeling.

Recent applications of this technology have resulted in field development plans including recompletions targeting pay behind pipe, artificial lift upgrades and optimizations, offline well reactivations, new well locations, and waterflood plans.

JEREMY B. BROWN



As a QRI Reservoir Management Analyst, Jeremy B. Brown has been deployed to national oil companies in Kuwait, Mexico, and China and on some of the world's largest reservoirs. He currently supports the giant Raudhatain and Sabriyah fields of Kuwait. Brown previously worked as Senior Staff Engineer in reservoir engineering for ExxonMobil, assigned to projects in Alaska, Australia and the Pacific.

Before joining ExxonMobil, he worked as lead research engineer for the Design Institute for Physical Properties Research, a thermodynamics research initiative directed by the American Institute of Chemical Engineers. Brown has a bachelor of science in chemical engineering from Brigham Young University and master's in petroleum engineering from the University of Houston.



EVENT INFO

Tuesday 11.8.16

11:30 AM – 1:30 PM

SPEAKER

Jeremy B. Brown
Analyst - Reservoir Management
QRI

LOCATION

Sullivan's Steakhouse
4608 Westheimer Rd
Houston, TX 77027

EVENT CONTACT

Alexandra Martinez
956-249-0994
adinorah.martinez@gmail.com

MEMBERS

\$40/\$50 Walk-In

NON-MEMBERS

\$50

STUDENT/MIT

\$15

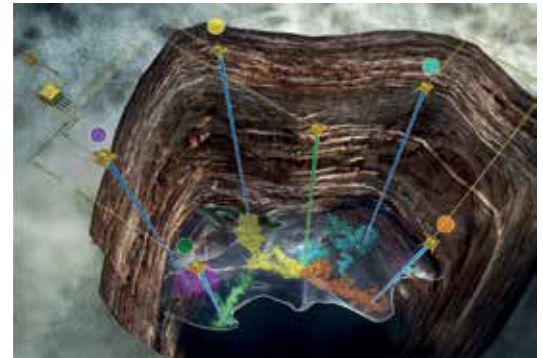


Johnson Matthey

Understand well connectivity using tracer technology

A Tracerco interwell chemical tracer study gives you critical data to help you optimize field development.

- Well connectivity determination
- Cross flow evaluation of faults and layers
- Pore volume swept calculation
- Sweep efficiency measurement
- Residual oil saturation determination



Flood smart, recover more with Tracerco technologies

To learn more about our local field and lab capabilities contact:

4106 New West Drive, Pasadena, TX 77507, USA

Tel: +1 281-291-7769 | Fax: +1 281-291-7709 | <http://hubs.ly/H03-lkQ0>



No-Cost MPD or UBO SCREENING

Get an unbiased review to address your MPD needs using **ADVANCED HYDRAULIC SOFTWARE**

- Get insight into managing your challenging wells
- Review your best-fit solution: Conventional, MPD, UBO
- Get a blueprint for all your service needs (training, execution, personnel, analytics)



Signa Engineering Corp.
Houston, TX USA, 281.774.1000
www.signaengineering.com

- Walk away with your analysis and results
- No-obligation consultation
- By appointment only, Thursday afternoons in Houston, TX, USA

Contact:
Dr. Sagar Nauduri, PE
281.774.3116
snauduri@signa.net

Reduce water. Save money.

Hexion's AquaBond™ proppants reduced water by 92% without hindering the flow of oil compared to traditional resin coated sand in laboratory testing.

AquaBond proppants are enabling operators to reduce formation water disposal costs, maximize well profitability, and lower cost per BOE.

Visit us at hexion.com/oilfield

© 2016 Hexion Inc. All rights reserved. TM and ® denote trademarks owned by or licensed to Hexion Inc.

DRILLING

Method for Pore Pressure Estimation Using Mechanical Specific Energy and Drilling Efficiency

An energy-based drilling mechanics methodology, the “DEMSE” method, has been demonstrated to be useful in predicting pore pressure. The MSE and drilling efficiencies used in the DEMSE method are calculated from downhole drilling parameters and subsurface log data. The DEMSE approach, which is based on physical principles, is an improvement over the traditional empirical drilling parameter methods such as modified d-exponent. Pore pressure estimates from the DEMSE method generally agree in magnitude and trend with the pressure estimates derived from sonic log data. These findings demonstrate that downhole drilling mechanics data, when properly utilized, can be used as an independent method for estimating pore pressure in real-time at the bit (while drilling), and for post-well analysis for improving pore pressure forecasts.

REZA MAJIDI



Reza Majidi is a Geomechanics Specialist with BP. He focuses on drilling geomechanics, wellbore stability, lost circulation mitigations, wellbore strengthening, pore pressure, and fracture gradient challenges. He graduated with a PhD in petroleum engineering from the University of Tulsa in 2008 and spent three years as research associate and adjunct professor at the University of Tulsa Drilling Research Program.



EVENT INFO

Wednesday 11.9.16

11:30 AM – 1:00 PM

SPEAKER

Reza Majidi
Geomechanics Technical Specialist
BP America Inc.

LOCATION

The Petroleum Club of Houston
1201 Louisiana St, 35th Floor
Houston, TX 77002

EVENT CONTACT

Tom Wick
713-806-2631
fieldwick2@gmail.com

MEMBERS

\$40/\$50 Walk-In

NON-MEMBERS

\$50

STUDENTS/MIT/RETIRED SPE

\$15

Critical Well Engineering

www.vikingeng.net

Petroleum Consulting
Multi-String Analysis
Material Selection
Well Construction
QA/TPI Surveillance
Failure Investigation
Training

VIKING
ENGINEERING

The Way Tubular Design Should Be



EVENT INFO

Wednesday 11.9.16

11:30 AM - 1:00 PM

SPEAKER

Jason Baihly
Commercial and Risk Assessment
Manager
Schlumberger

LOCATION

Norris Center - Westchase
9990 Richmond Ave, Ste 102
Houston, TX 77042

EVENT CONTACT

Stephen Loving
713-328-2244
stephen.loving@corelab.com

MEMBERS

\$40/\$50 Walk-In

NON-MEMBERS

\$50

STUDENTS/MIT/RETIRED SPE

\$15

WESTSIDE

An Integrated Approach to Candidate Selection for Refracturing Success

Refracturing in unconventional plays has gained popularity in the past few years. Factors behind this include many of the older laterals being under-stimulated, improvements in degradable chemical diverters, low recovery factors in unconventional, and operators trying to improve their overall capital efficiency. Before choosing the appropriate method to divert and isolate in refracturing treatments, the candidates must be carefully selected.

This presentation will discuss various single and multi-dimensional approaches to refracturing candidate selection. Questions such as what makes a good refracturing candidate and how should one go about selecting a refracturing candidate will be answered. Multi-dimensional approaches, including a multivariable and a matrix approach, will be covered. A detailed example applying the matrix approach to over a dozen refractured laterals across a single basin will be presented, including production results. A candidate vetting process, including key reservoir, well construction, and completion considerations, will be articulated to help avoid common pitfalls when finalizing a refracturing candidate. Lastly, a candidate selection and execution case study workflow example will be covered for a recently refractured lateral.

JASON BAIHLY



Jason Baihly is the Commercial and Risk Assessment Manager for Schlumberger. He develops alternative business models to help operators perform projects with minimal impacts on their capital budgets for new, DUC, and refracturing applications. Baihly also leads Schlumberger's integrated refracturing efforts, including candidate recognition, economic analysis, job design, marketing, and R&D.

His team has reviewed refrac candidates from over 40 plays and executed refracs in approximately 20 plays.

Baihly has 15 years of experience focused in tight rock plays including tight sands, carbonates, and shales. He has worked in various aspects of the oil and gas industry, including pressure pumping services, completions, consulting services, asset management, and integration. Baihly has a BS in civil engineering from the South Dakota School of Mines and Technology and an MSc in petroleum engineering management from Heriot Watt University in Edinburgh, Scotland.

GENERAL MEETING

Oil Outlook 2017: The Song Remains the Same

In this wide ranging presentation, Carl Larry will review the past year: what was good, what was not so good, and what went completely wrong. He'll look to next year with an eye on probable changes, not only to the fundamentals of the market (rising supply, rising demand), but also global implications (countries on the verge of economic collapse) and the effects of a new US president.

He will discuss the widening gap between the Western and the Eastern oil systems. Larry will touch on the hopes and goals of Mexico and other Latin American countries. Canada will be vetted, and its increasing presence in midstream markets may indicate it has sights on greater influence in the US market.

Additionally, Larry will give an overview of the future of the American Oil Dream and of what the Internet of Things means to the oil industry. He will discuss how big data can be applied now and into the next year. Much has been made about a "connected digital oilfield." Larry will look into the idea that, as with most things in this industry, the tried and true usually prevails. He will

CARL LARRY



Carl Larry is a Director of Business Development at Frost & Sullivan and the principal oil and gas consultant. Frost & Sullivan is a consulting firm that provides market research and analysis, growth strategy consulting, and corporate training across multiple industries. Larry has provided commodity research and market insight to some of world's largest hedge funds and commodity trading houses, financial institutions, and physical oil and gas producers.

Larry was involved in energy trading for 15 years, covering all aspects of brokerage, research and marketing. He started his career trading Eurodollars on the floor of the Chicago Mercantile Exchange. He then became Director of Futures Research for ABN AMRO and Barclays Capital in New York and has worked on marketing and trading energy derivatives for Citigroup and Credit Suisse in Houston.

Larry's frequent media appearances have included CNBC, Bloomberg TV, BNN Canada, China Central TV, The Wall Street Journal, and BusinessWeek. He has made presentations for the Asian Pacific Petroleum Conference in Singapore and in Vienna during OPEC meetings.

ONLINE REGISTRATION: spgcs.org/events/3384/



EVENT INFO

Thursday 11.10.16

11:30 AM - 1:00 PM

SPEAKER

Carl Larry

Director of Business Development
& Principal Consultant - Oil & Gas
Frost & Sullivan

LOCATION

The Petroleum Club of Houston
1201 Louisiana St, 35th Floor
Houston, TX 77002

EVENT CONTACT

Barry Faulkner
281-627-8790

barryfaulkner@earthlink.net

MEMBERS

\$40/\$50 Walk-In

NON-MEMBERS

\$50

STUDENTS/MIT/RETIRED SPE

\$15



EVENT INFO

Tuesday 11.15.16
11:30 AM -1:00 PM

SPEAKER

Doreen Chin, PhD, PE
 VP of Systems & Operability
 Subsea Engineering
 Technologies, LLC

LOCATION

TBD

EVENT CONTACT

Sean Liburd
 713-412-4310
 sliburd@gateinc.com

MEMBERS

\$40/\$50 Walk-In

NON-MEMBERS

\$50

STUDENTS/MIT/RETIRED SPE

\$15

PROJECTS, FACILITIES & CONSTRUCTION

US Shale Play Revolution Impacts on Deepwater Development and Global Energy Landscape

The unconventional play development in the US has unlocked massive shale oil/gas reserves and has been considered the biggest game changer of recent years. The US has become the No.1 unconventional oil and gas producer in the world. Influenced by the US success, the global unconventional play exploration had been active until the market downturn.

This presentation discusses the impact of the US unconventional play (shale/tight oil/gas) revolution on the deepwater industry and on global energy landscape. The objective is to explore:

- What will be the contribution of shale oil/gas to the future global energy landscape?
- Will the high development costs, environmental challenges, and low oil prices impair this contribution?
- How will the deepwater industry live on while facing the impact of low oil prices and the unconventional revolution?

The slump of oil prices in recent years has obstructed the momentum of the shale revolution and forced the deepwater industry to hold back its development pace. The oil and gas industry was thought to be entering its wintery period. However, the recent movement of unconventional play has allowed several producers to bring their break-even price to below \$40 by focusing on new technologies and operation excellence improvement. Such a trend may trigger new momentum for “Shale Revolution 2.0,” which will pose new and more rigorous challenges to the deepwater industry.

DOREEN CHIN, PHD, PE



Dr. Doreen Chin is the Vice President of Systems and Operability Solutions at Subsea Engineering Technologies (SET), LLC. She holds a PhD in mechanical engineering from the University of Houston. In 1997, Chin discovered the “turning angle” phenomenon in phase-change heat transfer and multiphase flow in a thin channel relating to cooling mechanism in nuclear reactor central core. She was named Fellow of the American Society of Mechanical Engineers at 2010.

Chin has over 30 years of experience in oil and gas, power generation and academia, including a long history of working for Shell and for service companies. Her experience includes technology development, engineering design, research, transient and steady-state multiphase flow and thermal analysis, safe and cost-effective management of flow assurance risks, subsea processing/subsea production system design, system operability, and operation strategies.

PERMIAN BASIN

Using Hydraulic Jet Pumps as an Economic Alternative to ESPs

Due to the rapidly declining life cycle of horizontal shale wells, the use of ESPs as a long-term lift solution, when compared to the overall production cycle, can present numerous challenges to an operator. Because of the short-term use and expense tied to ESPs, Weatherford has explored various ESP replacement technologies with the goals of lowering OPEX and increasing run life and reliability. Hydraulic jet lift in the Permian Basin is replacing ESPs and problematic rod lift wells due to high deviation and wear. This high-level discussion will give an overview of hydraulic jet pump systems, explore case histories in problematic wells, and outline the overall decisions made to utilize hydraulic jet lift based on run life and reduced OPEX expenses.

BARRY PHILLIPS

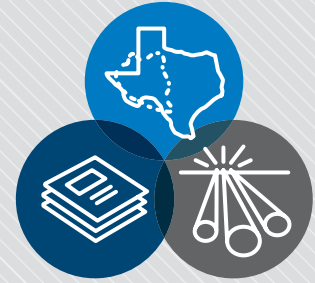
Barry Phillips is US Sales Manager of Technical Sales for the Hydraulic Lift product line at Weatherford Artificial Lift Systems in Houston. Phillips studied petroleum engineering at the University of Southwestern Louisiana. He entered the workforce in 1982 with National Production Systems (now ARMCO) working with artificial lift systems, specifically focused on hydraulic lift systems. Phillips has an extensive field sales and service background, both in the domestic and international markets, and now focuses on the Permian Basin and Eagle Ford Shale Plays.



UNITY OIL & ENERGY SOLUTIONS, INC.

Guar Gum Powder of various grades · Readily available in Houston for immediate delivery · We are one of the **largest stockist** of high performing Guar Gum Powder

16000 Barkers Point Lane Ste 228 | Houston, TX
832.314.7317 | www.UnityOilEnergy.com



EVENT INFO

Tuesday 11.15.16

11:30 AM – 1:00 PM

SPEAKER

Barry Phillips
US Sales Manager - Hydraulic Lifts
Weatherford

LOCATION

Norris Center - Westchase
9990 Richmond Ave, Ste 102
Houston, TX 77042

EVENT CONTACT

Amy Timmons
atimmons@flogistix.com

MEMBERS

\$40/\$50 Walk-In

NON-MEMBERS

\$50

STUDENTS/MIT/RETIRED SPE

\$15



EVENT INFO

Wednesday 11.16.16

5:00 PM – 7:30 PM

SPEAKER

John Saucer
Vice President of Research
and Analysis
Mobius Risk Group

LOCATION

Four Seasons Houston
1300 Lamar St.
Houston, TX 77010

EVENT CONTACT

Cody Felton
281-221-3042
cody.felton@energynet.com

MEMBERS

\$40/\$55 Walk-In

NON-MEMBERS

\$50/\$55 Walk-In

STUDENTS/MIT/RETIRED

\$15 Pre-Registered

BUSINESS DEVELOPMENT

**Managing Price & Revenue
Risk Amid Heightened Market
Uncertainty**

Over the past two years, low petroleum prices and heightened price volatility have presented a challenging operating environment for oil and gas producers. With growing optimism around energy prices, managing price risk, or hedging, will play a much larger role in our industry moving forward. This increase in hedging activity will focus on risk to forward revenues, as well as risk to “deal value” as ownership of upstream assets increasingly changes hands.

Please join us for a lively look back on hedging strategies, history, and current hedging coverage of US companies. The popular format of a networking hour followed by an hour-long program, including a Q&A session, will begin at 5:00 PM in the mezzanine

JOHN SAUCER



Before joining Mobius Risk Group as Vice President of Research and Analysis, John Saucer spent 13 years at the Houston-based energy fund AAA Capital Management Advisors as a Trading Principal and Petroleum Specialist. Previously, he was a Vice President of Commodity Futures Sales at Citigroup. During his 12 years at Citigroup, he also spent seven years as a Vice President of Energy Analysis, responsible for fundamental research in the Futures Research Department. Before Citigroup, Saucer spent five years as a senior editor at Petroleum Argus, a leading international oil market publication. Saucer is a graduate of The University of Texas with a BA in economics.

WATER AND WASTE MANAGEMENT

Oklahoma's Response to Induced Seismicity - Secretary Teague

The Water and Waste Study Group is pleased to have Michael Teague, Secretary of Energy and Environment for the State of Oklahoma present at their upcoming meeting. Secretary Teague will give an overview of the state's efforts to respond to seismicity by working together with a very diverse group of stake holders. He will also share insights on the conversation that is happening around both the short-term and long-term opportunities for produced water.

We are limiting the number of registrants to 130, so please register as soon as possible. Note that check-in, registration and networking will begin at 11AM. The meeting will start at 11:30AM.

MICHAEL TEAGUE

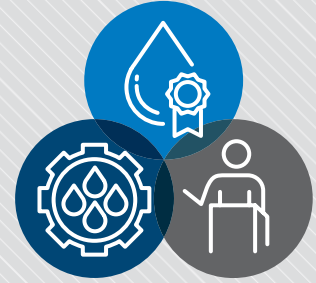


Michael Teague serves as Oklahoma's first Secretary of Energy and Environment. Appointed in 2013, he is responsible for coordinating over 30 state agencies, boards, compacts, and commissions in advancing policies that encourage energy production and environmental stewardship throughout Oklahoma.

Prior to his appointment, Teague served in the U.S. Army for nearly 30 years before retiring with the rank of Colonel. As the commander of the Tulsa District of the U.S. Army Corps of Engineers he managed a civil works program encompassing all of Oklahoma, a large portion of southern Kansas and the panhandle of northern Texas. He oversaw over 700 employees in engineering, construction, and operations, with an annual budget of \$700 million.

Throughout his career, Teague has dealt with construction, power generation and distribution, water supply and flood control, and environmental impact studies. He has facilitated and negotiated numerous solutions involving federal and state agencies, tribes, and local stakeholders.

Teague received a bachelor's degree in Civil Engineering from Norwich University. He also received master's degrees in Operations Analysis from the Naval Postgraduate School and in National Security and Strategic Studies from the Naval War College. We are excited to have Secretary Teague meet with us and hope you can join us.



EVENT INFO

Wednesday 11.16.16

11:30 AM - 1:00 PM

SPEAKER

Michael Teague
Secretary of Energy and Environment
State of Oklahoma

LOCATION

Oxy
5 Greenway Plaza
Houston, TX 77046

EVENT CONTACT

Reshmy Mohanan
713-309-5238
reshmy.mohanan@griffindewatering.com

MEMBERS

\$40/\$50 Walk-In

NON-MEMBERS

\$50

STUDENTS/MIT/RETIRED SPE

\$15

Oil Patch Orientation

The Oil Patch Orientation is the most popular SPE-GCS course. The course is a non-technical audio-visual guided tour through the oil patch, illustrating the basic equipment and techniques used in the discovery, development and production of petroleum.

Agenda:

- Introduction/Outline of the Day
- The Economics & Future of the Petroleum Industry
- Theory of the Origins of Hydrocarbons
- Reservoir Parameters (e.g.: Porosity/Permeability)
- Geology of Petroleum & Geophysics
- Drilling Basics
- Well Logging
- Well Completions
- Reservoir Drive Mechanisms
- Production Equipment (sub-surface & surface)
- Midstream & Downstream Topics
- Offshore and Deepwater Drilling and Production

REGISTRATION

spegcs.org/events/3395

EVENT INFO

THURSDAY

11.3.16

8:30 AM - 4:30 PM

LOCATION

SPE Houston Training Center
10777 Westheimer Rd, Ste 1075
Houston TX 77042

EVENT CONTACT

Sunil Lakshminarayanan
832-627-3470
sunil_lakshminarayanan@oxy.com

MEMBERS & NON-MEMBERS

\$350

STUDENTS/MIT

\$100/\$175

SPE-GCS YP Houston Heart Walk 2016

Please join SPE-GCS Young Professionals in their support of the American Heart Association, the largest voluntary health organization dedicated to defeating heart disease, stroke, and other cardiovascular diseases.

Our team is participating in the American Heart Association's Heart Walk to promote physical activity to build healthier lives. Imagine the impact if we reduce death and disability from cardiovascular diseases and stroke — the nation's No. 1 and No. 5 killers — by 20% by 2020!

The Young Professionals community outreach committee invites you to join our SPE-GCS YP team to support AHA's premier fundraising event. It will be also a good opportunity to meet people and release some stress from the workweek.

Thank you, walkers, donors and volunteers who help fight heart disease and stroke. There is no fee to join the walk. However, we invite you to donate any amount to this cause.

EVENT INFO

SATURDAY

11.5.16

8:00 AM - 1:00 PM

LOCATION

Texas Medical Center: SEL Lot
1522 William C Harvin Blvd
Houston, TX 77030

EVENT CONTACT

Catalina Leal
832-7295462
catalina.leal@bakerhughes.com

REGISTRATION

pegcs.org/events/3360/



Informal Lunch

The SPE-GCS Auxiliary will not have a formal luncheon and program in November. Meet us for an informal lunch at Rio Ranch for conversation and friendship with separate checks.

LOCATION

Rio Ranch
9999 Westheimer Rd
Houston, TX 77042

EVENT CONTACT

Evelyn Earlougher
281-419-1328
earlougher@comcast.net

EVENT INFO

FRIDAY

11.11.16

11:00 AM

2016 Annual SPE-GCS Petroleum Engineering High School Recruiting Fair

High school students can learn about exciting and financially rewarding careers in the oil and gas industry during a recruiting fair November 8 at Houston's Memorial High School.

The two-hour event will feature a 30-minute slate of speakers, including recent graduates, industry leaders, and university recruiters.

Universities recruiting at past fairs have included Rice, Colorado School of Mines, LSU, Marietta College, Montana Tech, University of Oklahoma, Penn State, UT-Austin, Texas A&M, Texas Tech, University of Tulsa, and University of Missouri-Rolla.

The event is presented by the SPE-GCS High School Recruiting Fair Committee. Industry professionals and student chapter volunteers are welcome.

Throughout the school year, SPE volunteers are available to speak to students and adults about the oil business, thereby increasing public understanding of the science and engineering involved in our industry.

EVENT INFO

TUESDAY

11.8.16

7:00 PM - 9:00 PM

LOCATION

Memorial High School
935 Echo Lane
Houston, TX 77024

EVENT CONTACT

Kory IZard
kory.izard@chevron.com



Where Are They Now?

PAST SCHOLARSHIP WINNERS

The Scholarship Committee recently conducted a survey of past recipients of the SPE-GCS scholarship. If you're considering donating to the SPE-GCS scholarship fund or hiring an SPE-GCS scholarship winner, you'll be glad to know that the program has enjoyed considerable success over the past six decades. Here's winner Oliver Wilson's story:

My favorite memory from my college has to be the time I spent with four friends coding our reservoir simulation software package. The course was taught by Dr. Albert Reynolds and required each student to code (in C++ or Fortran) a fully implicit, 3D, and two-phase simulator from scratch. I was the only undergraduate in the class and spent countless hours with the graduate students learning how to code and debug the software. During our breaks we would set up LAN video-game sessions, which were a blast! To this day I stay in contact with my four friends from the class, and some of them are even coming to my wedding. The aspects of simulation that I learned during this course really set me up well for my first role at Chevron as a reservoir simulation engineer in the deepwater Gulf of Mexico.

I graduated from the University of Tulsa about three years ago. Since then, I have held two positions at Chevron. The first one was working as a lead engineer for a major capital project at a top-tier asset in the deepwater Gulf of Mexico. The project has successfully been moved to field in development, which is a big achievement for not only me, but also for Chevron. My second role, which is my current position, is working as the Real-Time Reservoir Management (RTRM) Program Manager. This role is unique because it ties many IT aspects with engineering components. We use automated workflows via models to calculate well rates, automatically update production history in simulation models, and will soon allow for system network optimization. RTRM has enabled a lot of production for our deepwater Gulf of Mexico assets and will continue to do so!

My most notable SPE position has to be my time as SPE student chapter president at the University of Tulsa. The SPE scholarship was a very important contributing factor to me achieving my degree at the University of Tulsa. When I accepted entry to the university, I was not going to receive financial support from my family, so it was very important for me to apply for scholarships. My financial situation resulted in me being listed as a non-traditional student. As a result, I am very thankful to the SPE for enabling my education.

OLIVER WILSON



CAREER OVERVIEW

Real Time Reservoir Management Program Manager at Chevron

- Marine Military Academy – 2009
- University of Tulsa, BS in petroleum engineering – 2013

CONTACT

oliver-wilson@utulsa.edu

SPONSORSHIP

spegcs.org/sponsorship-opportunity/

DONATION INFO

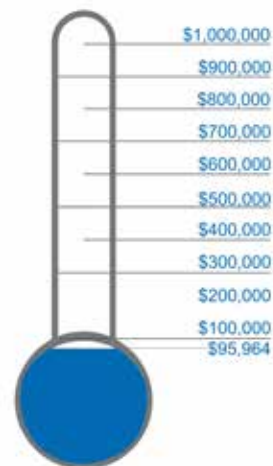
spegcs.org/spegcs-scholarship-fund/

SPE-GCS Scholarship Fund Update

We are excited to announce the status update for our fundraising efforts. As of October 1st, 2016 we have raised **\$95,937** to support our scholarship program! So far, we have received donations from past scholarship recipients who wanted to give back, SPE-GCS Board of Directors, SPE-GCS Study Group and Committee Leaders, SPE-GCS Event Attendees, SPE-GCS Members and Associates, SPEi Leaders, and company donations.

For more information about our scholarship fund, scholarship program or our current donor list, please visit www.spegcs.org/spegcs-scholarship-fund/. You will find testimonials from past scholarship recipients and learn about the impact that SPE-GCS scholarships had on their lives and professional careers. If you have not yet donated, we invite you to visit our website and support our efforts as a member of the SPE-GCS family and fellow industry professional. As a reminder, all donations are tax-deductible. We also encourage you to find out if your company has a matching program that could make your individual donation go even further!

FUND STATUS



Members in Transition Initiative

TENTH SEMINAR SERIES

The SPE Members in Transition Seminar Series features topics of interest to SPE members who are between jobs during the industry downturn or who are looking for new career opportunities. The agenda for the 10th seminar in the series will include “Developing Your Business Edge to Become the Best You,” “The Glass Is Half Full – Shifting Perception to Achieve Results,” “Maximizing your LinkedIn Profile,” and a discussion of resources for SPE members.

Program 1: Developing Your Business Edge to Become the Best You

While commodity prices may vary, the value of the best stock in your portfolio, “You,” is something you manage. Develop a business edge to be the best you in your career. Learn the four roles you need to master to stay relevant. Walk away with specific items to address in your development plan and hear about Katie Mehnert’s edgy journey from corporate life to entrepreneurship.



KATIE MEHNERT

Katie Mehnert is the Chief Everything Officer of Pink Petro™, the global community and career resource aimed at disrupting the energy gender gap. Pink Petro has members worldwide in over 500 companies. Mehnert has held global leadership roles with BP and Shell. She is a graduate of Louisiana State University in communications and Rice University’s Executive Energy program.

Program 2: The Glass Is Half Full – Shifting Perception to Achieve Results

This presentation will examine the way you see yourself, other people, and situations. You will be able to look for opportunities rather than problems, strengths rather than weaknesses, and what can be done instead of what can’t be done in both your work and your personal life.



MARGARET A JOHNSON

Margaret A Johnson, President of Ideal Training Inc., helps professionals unleash creativity, ignite ideas, and remove barriers to success. Her experiences range from engineering and management in power to sales and consulting in the oil and gas industry. She holds a BS in mechanical engineering, an MBA, a professional engineering license, and coaching credentials.

Program 3: Maximizing your LinkedIn Profile

Instead of just applying for jobs on company websites, you can optimize your LinkedIn profile to help employers find and contact you. In this session, you’ll learn how HR professionals search for talent. You’ll find out how to make your profile stand out and how to use the right keywords to get discovered.



VERONICA REYES

Veronica Reyes, Globalwide Talent President, has more than 20 years’ experience in technical service and staffing services. She educates others on how to rebrand their skills to transition into new occupations and industries. She provided transition services to thousands affected by the end of NASA’s Shuttle Program. Reyes holds degrees in social science and humanities.

EVENT INFO

FRIDAY

11.4.16

10:00 AM – 3:00 PM

SPEAKERS

Katie Mehnert
Chief Everything Officer
Pink Petro™

Margaret A Johnson
President
Ideal Training Inc.

Veronica Reyes
President
Globalwide Talent

LOCATION

Houston Technology Center
410 Pierce St
Houston, TX 77002

EVENT CONTACT

Susan Howes
713-553-5020
c.susan.howes@gmail.com

Ashish Fatnani
832.415.6835
ashish.fatnani@halliburton.com

MEMBERS

\$40/\$50 Walk-In

NON-MEMBERS

\$50

STUDENTS/TRANSITIONING

\$15

Registration capped at 70

SPE-GCS Entrepreneurship Cell Launched to Integrate the Oil and Gas Innovation Ecosystem

The Entrepreneurship cell is a new sub-committee under the Innovate Committee which is responsible for the oversight of technology for the Gulf- Coast Section. This initiative aims to share success stories and learnings from oil and gas startups with the SPE community and to become the one-stop knowledge transfer shop for any oil and gas entrepreneur.

The Entrepreneurship Cell's first event was sponsored by Halliburton's Landmark Solutions. It was held September 20 at the Iron Yard (a Houston code boot camp) and gathered several oil and gas entrepreneurs, investors, and decision makers.

The panel session was followed by a conversation on the state of oil and gas innovation ecosystem. Panelists included Matt Dawson, Investment Director at Statoil and CTO of Statoil spin-out Reveal Energy Services; Zee Mohamed, CEO of Zahroof Valves

Inc.; and Troy Ruths, CEO and Chief Data Scientist at Ruths.

The diverse backgrounds of the panelists made for a fruitful conversation, providing a very practical perspective on how to develop technology and shorten the adoption cycle in oil and gas.

The group founders are entrepreneurs from Marathon Oil, Halliburton, National Oilwell Varco, and Biota Technology. The group is set to hold monthly events such as panel discussions, Shark Tank-style pitch and feedback sessions, startup CEO speeches, and happy hours. For more info on the next events, visit spegcs.org.



Chevron Receives 2016 SPE Gulf Coast Region Corporate Supporter Award

At the Emerging Engineers Conference on June 23 at the ExxonMobil campus in The Woodlands, SPE Gulf Coast Regional Director Roger Hite presented Chevron with the 2016 Regional Corporate Supporter Award in front of a packed house of 250 Young Professionals.

Here is a list of the active Gulf Coast Section leaders from Chevron for the 2015-16 year:

- Simeon Eburi – Education Chair, Board member
- Jennifer Pinnick – Scholarship Chair, Education Committee member
- Chiedozie Ekweribe – Young Professionals (YP) Chair, Young Engineer of the Year
- Sahil Malhotra – YP Program Coordinator
- Ernesto Valbuena – Emerging Engineers Conference Chair



During the 2015-16 program year, Chevron gave many presentations and participated in panel discussions at our study group meetings and events:

- Roughneck Camp, David Payne, VP, Global Drilling & Completion
- Emerging Engineers Conference, Chris Riccobono, DWEP Subsurface Manager, and Simeon Eburi, Decision & Economic Analysis Advisor
- R&D Study Group, Kimberly McHugh, GM Drilling & Completions
- Annual Awards Banquet Keynote Speaker, Janeen Judah, 2017 SPE President
- Business Development Study Group, Stephen P. Thurston, VP Deepwater Exploration & Projects, Chevron North America E&P
- Projects, Facilities & Construction Study Group, Jim Crompton, retired from Chevron after 37 years
- Drilling Study Group, Graham Mensa-Wilmot, Senior Advisor, Drilling Engineer in Chevron's Energy Technology Company
- Projects, Facilities & Construction Study Group, Ernesto Valbuena, Petroleum Engineer

Chevron was very generous with their employees' volunteer hours and financial support for membership and active participation in SPE, whether for professionals, young professionals, or students. Student chapter membership grew from 2,086 to 2,613 with dues underwritten by Chevron. So it was with heartfelt thanks that we presented Chevron with our 2016 Regional Corporate Supporter Award.

EVENT RECAP

The Emerging Engineers Conference (EEC), organized by the SPE-GCS Young Professionals, is an annual symposium for oil & gas industry professionals with less than 10 years of experience. The 2016 edition of the EEC hosted over 230 industry professionals in June for a full day of technical and career development discussions at the ExxonMobil Campus in North Houston. The SPE-GCS YP Board would like to express sincere gratitude to all the speakers, panelists, and sponsors that participated in this year's conference.



0553

DAYS

0000

WORKOVERS

SCALEGUARD

Proppant-delivered
scale-inhibiting technology

Reduce your LOE with the longest-lasting scale inhibition treatment by far...and counting

SCALEGUARD® proppant-delivered scale-inhibiting technology is a unique, long-term well maintenance solution that assures optimal production and significantly reduces LOE.

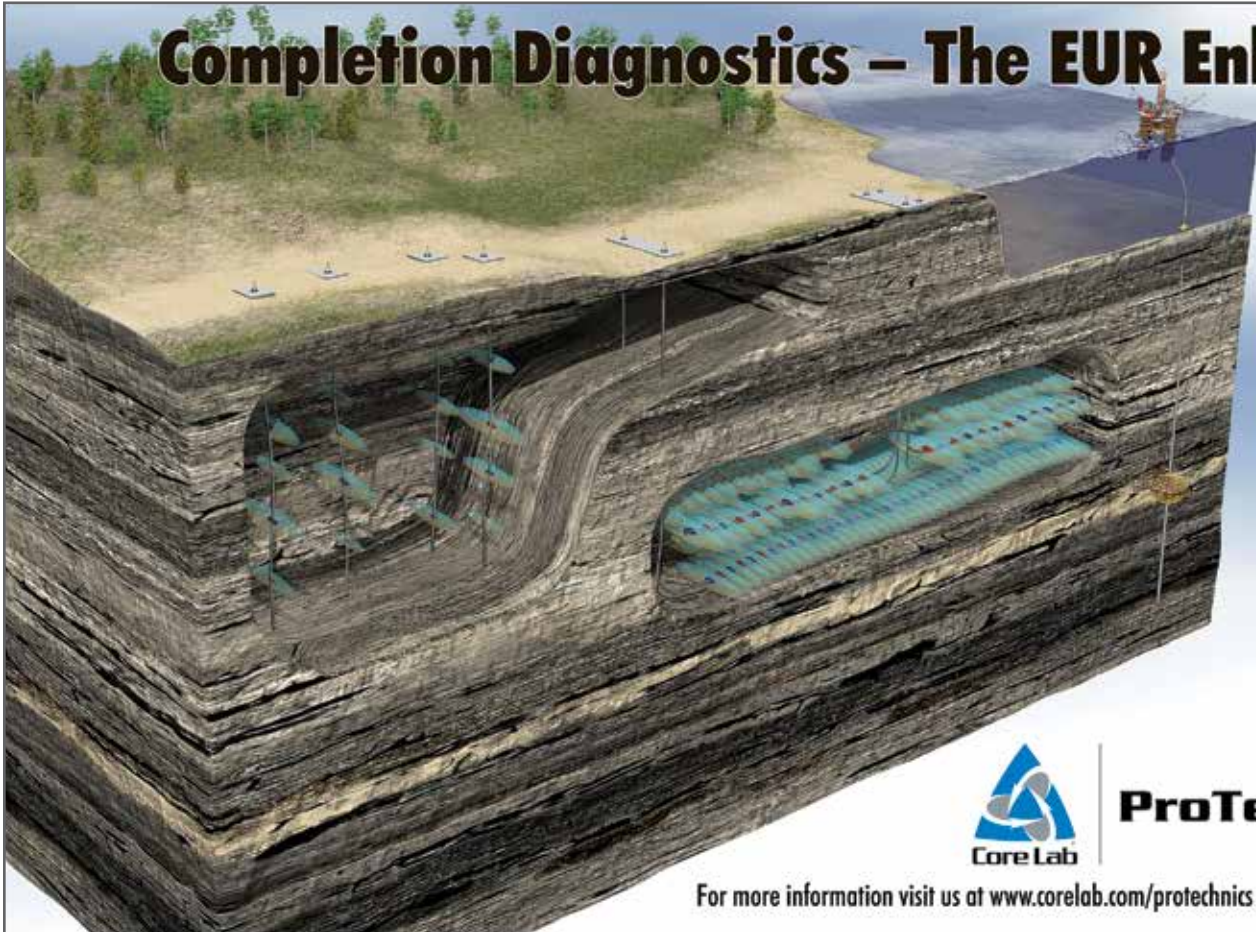
Each treatment can be designed to last the life of the well, and one Uinta operator is saving over \$160,000 per well in maintenance costs each year.

carboceramics.com/scaleguard

CARBO

Production. Enhanced.

Completion Diagnostics – The EUR Enhancer



ProTechnics

For more information visit us at www.corelab.com/protechnics or call 713-328-2320

SUBJECT MATTER EXPERTS

DESIGN
ANALYSIS
TESTING

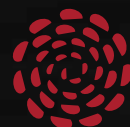
 **STRESS
ENGINEERING
SERVICES INC.**

281.955.2900
www.stress.com

HOUSTON • CINCINNATI • NEW ORLEANS • BATON ROUGE • CALGARY

DELIVERING GLOBAL SOLUTIONS FOR E & P CHALLENGES

- Drilling & Completion
- Well Control
- Reservoir & Production



**SIERRA
HAMILTON**

+1.713.956.0956 • Sierra-Hamilton.com

SPE-GCS STUDENT CHAPTERS

RICE-SPE

Evening with Industry

On September 14, we invited all SPE members to attend Evening with Industry, a casual networking event for Rice engineers to connect with companies and organizations. Students learned about companies, met recruiters, and chatted about opportunities before the Career Fair.

ChBE Fall Lecture & Networking Dinner

On October 6, we joined in the annual Fall Lecture & Networking Dinner featuring John Perez, owner of Houston-based Cognascents Consulting Group. He shared his insights on entrepreneurship, including his own experience as the founder of two startups, and led a discussion with other Rice ChBE alumni from diverse career paths.

SASE 2016 National Conference in Dallas

We invited our SPE members to attend the SASE (Society of Asian Scientists & Engineers) 2016 National Conference in Dallas October 13-15. SASE Conference was the largest conference and career fair for Asian Americans in the United States.

A Special Invitation: Advisory Board

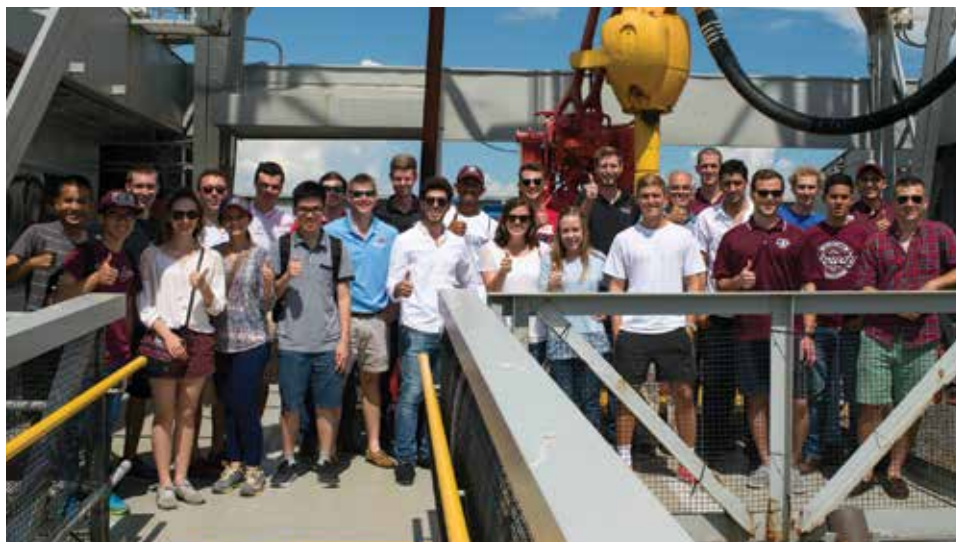
The committee is launching an advisory board to invite both Rice alumni and industry representatives to give student members advice and help them build personal connections. If you are interested and willing to support us, please contact Pengfei (Patrick) Dong, pdi8@rice.edu.

TAMU-SPE

TAMU-SPE Starts the Year Off Strong

We were honored to have Jeff Spath, 2014 SPE International President and current CEO of Texas Oil and Gas Institute, speak at our first general meeting of the year. Additionally, we had the honor of having 2017 SPE International President Janeen Judah give a presentation on why she loves “the big, messy, politically incorrect oil business.” Spath and Judah are both proud Aggie petroleum engineers, and we were glad they could come back to Aggieland to talk to us!

On September 9, TAMU-SPE hosted its annual Career Enhancement Event in Texas A&M’s Memorial Student Center. This daylong career fair brought in 27 companies, and over 600 students attended. During the first half of the day, companies gave presentations and provided information on internship/co-op/full-time opportunities. In the second half of the day, students mingled with the recruiters during the open-floor session.



On September 17, the chapter visited the Ocean Star Offshore Drilling Rig & Museum in Galveston. Dr. Heitor Lima and industry partners from BHP Billiton served as tour guides for the rig trip and familiarized over 20 freshmen and sophomores with the components of an offshore drilling rig while demonstrating the necessity for further innovation in deepwater drilling.

UH-SPE

UH SPE Golf Tournament

The University of Houston’s Society of Petroleum Engineers is accepting sponsors for our Golf Tournament fundraiser at BlackHorse Golf Club in Cypress. The tournament will be noon to 5 PM November 18.

We would like to extend our deepest gratitude toward our current sponsors, who, with their donations, will fund technical and soft-skills workshops, drilling rig tours, and student success initiatives. Sponsorship packages range from \$150 to \$3,000. All sponsors will be recognized and acknowledged for their specific donation to UHSPE in addition to their package benefits.

Contact event coordinator Johnny Soudah at vp.external@uhspe.org for a registration packet. The deadline to submit a registration packet is November 1. We look forward to hosting you November 18!

Student Chapter Directory

HOUSTON COMMUNITY COLLEGE

Raymond McCoy
rqm3rd@yahoo.com

RICE

Yichen Liu
astron.liuy@gmail.com

TEXAS A&M

Alex Lambros
alex.lambros@tamu.edu

UNIVERSITY OF HOUSTON

GQ Guo
president@uhspe.org

DIRECTORY

2016-2017 Board of Directors

CHAIR

Deepak Gala, Shell
832-377-2732
deepak.gala@shell.com

VICE CHAIR

Trey Shaffer, Environmental Resource Mgmt.
281-704-3664
trey.shaffer@erm.com

PAST CHAIR / ADVANCEMENT COMMITTEE

Ivor Ellul, CiSK Ventures
713-240-2740
iellul@ciskventures.com

SECRETARY

Marise Mikulis, Baker Hughes
281-723-2901
marise.mikulis@bakerhughes.com

TREASURER

David Flores
281-381-5828
david_p_flores@yahoo.com

VICE TREASURER

Prashant Sainani, ConocoPhillips
214-315-5427
prash87@gmail.com

Board Committee Chairs

CAREER MANAGEMENT, MIT

Sunil Lakshminarayanan, Occidental
713-344-1249
sunil_lakshminarayanan@oxy.com

C. Susan Howes,
Subsurface Consultants & Associates
713-798-2444
c.susan.howes@gmail.com

COMMUNICATIONS

Bryan Marlborough,
Gate Premier Solutions
985-232-0318
bryan.marlborough@gmail.com

COMMUNITY SERVICES

Lisa Li, Williams
281-814-6849
yuli2008@comcast.net

EDUCATION

Simeon Eburi, Chevron
832-854-3134
simeon.eburi@chevron.com

INNOVATE COMMITTEE

John Reichardt, RPS Group
713-595-5121
john.reichardt@rpsgroup.com

MEMBERSHIP

Kris Pitta
713-204-5141
pittakris@gmail.com

PROGRAMS

Fady Chaban, CDEUS
832-387-7249
chabanf@gmail.com

SOCIAL ACTIVITIES

James Jackson
281-376-1993
jjackson5223@gmail.com

YOUNG PROFESSIONALS

Nii Ahele Nunoo, NOV
507-304-5416
nii.nunoo@nov.com

DIRECTORS AT LARGE 2016-2018

Mohammad Tabatabaei
Newfield Exploration
281-674-1535
mtabatabaei@newfield.com

Robert Estes
713-204-5141
ra-estes@att.net

Ernie Prochaska, NOV
281-221-1434
ernie.prochaska@nov.com

DIRECTORS AT LARGE 2015-2017

John "J.J." Jackson, Unimin Corp.
832-247-0233
jsjackson@unimin.com

Alvin Barber, Schlumberger
713-689-2725
abarberspe@gmail.com

Mark Fleming, Suntrust Robinson Humphrey
832-603-2305
mark.fleming@suntrust.com

SPE GULF COAST NORTH AMERICA REGIONAL DIRECTOR

J. Roger Hite, Inwood Solutions, LLC
713-385-5343
hite@inwood-solutions.com

Committee Chairs

AUXILIARY

Nancy Giffhorn
rgiffhorn@aol.com

OILFIELD GAMES

Lindsey Ferrell, Frontline Group
spevolunteer@frontline-group.com

AWARDS BANQUET

Jeremy Viscomi,
Petroleum Technology Transfer Council
jviscomi@pttc.org

ESP WORKSHOP

Barry Nicholson, OXY
barry-nicholson@oxy.com

GOLF CO-CHAIR

Robin Smith
robin77095@att.net

INTERNSHIPS

David Li, DSL Ocean Group
dsl6625@yahoo.com

NEWSLETTER

Brittini Romero, Unimin
editor@spegcs.org

PUBLICITY

Pablo Perez, Bardasz
pablo.perez@bardasz.com

SCHOLARSHIP

Jennifer Pinnick, Chevron
gcssholarship1@gmail.com

SPONSORSHIP

David Pantoja, Citi A&D Group
david.pantoja@citi.com

SPORTING CLAYS

Paul Conover, NOV
paul.conover@nov.com

TENNIS

Erin Chang, BP
erin.chang@bp.com

WEB TECHNOLOGY

Lindsey Newsome,
Newsome Marketing Group
lindseynewsome@gmail.com

Study Group Chairs

BUSINESS DEVELOPMENT

David Pantoja, Citi A&D Group
david.pantoja@citi.com

COMPLETIONS & PRODUCTION

Jonathan Godwin
jongodwin@hotmail.com

DRILLING

Ernie Prochaska, NOV DDS
ernie.prochaska@nov.com

GENERAL MEETING

Robert Saucedo, ASHMIN
rsaucedo@ashmin.com

HSSE AND SOCIAL RESPONSIBILITY

Trey Shaffer, Environmental Resources
Management (ERM)
trey.shaffer@erm.com

INTERNATIONAL

Mary Beth Snodgrass, Local Content LLC
mbs@localcontent.com

NORTHSIDE

Sumitra Mukhophadhay, Superior Energy
sumitra.mukhophadhay@
superiorenergy.com

PERMIAN BASIN

Amy Timmons
atimmons1114@gmail.com

PETRO-TECH

Jessica Morgan, Blackstone Minerals
jmorgan@blackstoneminerals.com

PROJECTS, FACILITIES, CONSTRUCTION

Chris Shaw, Shell
c.shaw@shell.com

RESEARCH & DEVELOPMENT

Kitty Harvey, Cameron
kitty.harvey@c-a-m.com

RESERVOIR

Freddy Alvarado, Chevron
freddy.alvarado@chevron.com

WATER & WASTE MANAGEMENT

Barbara Denson, Weston Solutions
barbara.denson@WestonSolutions.com

WESTSIDE

Steve Loving, Core Laboratories, LP
stephen.lovings@corelab.com

CONNECT

INFORMATION

EDITOR

Brittni Romero | editor@spegcs.org

ADVERTISING COORDINATOR

Brendan Marlborough
advertising@spegcs.org

BOARD LIAISON

Bryan Marlborough
bryan.marlbrough@gmail.com

LAYOUT & DESIGN

DesignGood | designgoodstudio.com
kristie@designgood.com

GULF COAST SECTION ADMINISTRATOR

Taylor Wright | spe-gcs@spe.org

HOURS & LOCATION

10777 Westheimer Rd, Ste 1075
Houston, TX 77042
713-779-9595 x 813 | F 713-779-4216
Monday - Friday 8:30 a.m. to 5:00 p.m.
Work Schedule - 09/80

For comments, contributions, or delivery
problems, contact editor@spegcs.org.

November 2016 CALENDAR

SUNDAY	MONDAY	TUESDAY	WEDNESDAY	THURSDAY	FRIDAY	SATURDAY
			1	2	Research & Development Cont. Ed/Career Mgmt. 3	Members in Transition (MiT) 4 Young Professionals 5
6	7	Northside HSSE-SR Reservoir Education 8	Drilling Westside 9	General Meeting 10	Auxiliary SPE-GCS office closed 11	12
13	14	PF&C Permian Basin 15	Business Development Waste & Water Mgmt 16	Board of Directors 17	18	19
20	21	22	23	Thanksgiving Holiday SPE-GCS office closed 24	SPE-GCS office closed 25	26
27	28	29	30			



Your Clear Solution for Deepwater Completions


TETRA CS Neptune™ is a high-density (up to a density of 15.4 ppg, 1.85 g/ml), solids-free fluid that provides a viable alternative to zinc bromide and cesium formate brines.

- ▶ Zinc-free with global environmental acceptability
- ▶ Does not require zero-discharge system of work
- ▶ Formulated from renewable products, ensuring continuity of supply
- ▶ Can be reclaimed for reuse, using standard technology
- ▶ Requires no special mixing, handling, or storage equipment at rigsite
- ▶ Can be formulated as a low-solids, reservoir drill-in fluid

TETRA CS Neptune fluid is another innovative solution from TETRA Technologies, Inc.

tetratec.com



DEDICATED TO THE CØRE 

© 2016 TETRA Technologies, Inc. All Rights Reserved. TETRA and the TETRA logo are registered trademarks, and TETRA CS Neptune is a trademark of TETRA Technologies, Inc.



SOCIETY OF PETROLEUM ENGINEERS GULF COAST SECTION

10777 Westheimer Road
Suite 1075
Houston, TX 77042

NON-PROFIT
ORGANIZATION
U.S. POSTAGE
PAID
PERMIT NO. 6476
HOUSTON, TX

YOUR AD COULD BE HERE! ADVERTISE WITH US & REACH OVER 16,000 OIL AND GAS INDUSTRY INFLUENCERS EVERY MONTH!

Buy ads that really produce

SPE-GCS hits your target audience

Flexible ad sizes in full-color, glossy publication

SPECIAL PRICING & PROMOTIONAL RATES AVAILABLE FOR A LIMITED TIME, CONTACT US NOW!

ADVERTISING COORDINATOR
Brendan Marlborough
advertising@spgcs.org



ARE YOU AN ADVERTISING SALES PROFESSIONAL LOOKING FOR YOUR NEXT MOVE? BECOME A PART OF A TEAM THAT INCLUDES PROFESSIONALS FROM THE TOP PETROLEUM INDUSTRIES IN THE GULF COAST REGION.

Society of Petroleum Engineers is currently hiring for an **ADVERTISING SALES COORDINATOR** to join the Connect newsletter team. This is a great opportunity to build relationships while earning a generous commission based income.

Primary focus will be to prospect and secure ad sales for the SPE-GCS Connect monthly newsletter.

FOR MORE INFO CONTACT
Communications Chair
Bryan Marlborough
bryanmarlborough@gmail.com