



Gulf Coast Section

OCTOBER
2016

CONNECT

SPE GULF COAST SECTION NEWSLETTER

SPE-GCS 2016 MERGERS, ACQUISITIONS & DIVESTMENTS SYMPOSIUM

BUSINESS DEVELOPMENT P. 26

ACCELERATED LEARNING TUTORIAL: INTRODUCTION TO WELL TESTING AND PRESSURE TRANSIENT ANALYSIS

CONTINUING EDUCATION/CAREER MANAGEMENT P. 22

INTERNATIONAL EXPECTATIONS FOR RESERVES AND DUE DILIGENCE REPORTS

INTERNATIONAL P. 23

GUIDANCE FOR DECISION QUALITY FOR MULTI-COMPANY UPSTREAM PROJECTS

GENERAL MEETING P. 15

SPE-GCS 33RD ANNUAL TENNIS TOURNAMENT

P. 27



CHAIR'S CORNER

DEEPAK M. GALA, SHELL

2016-2017 SPE-GCS Chair

I wanted to reflect back over past year or so and provide an update on rig counts and oil markets in general.



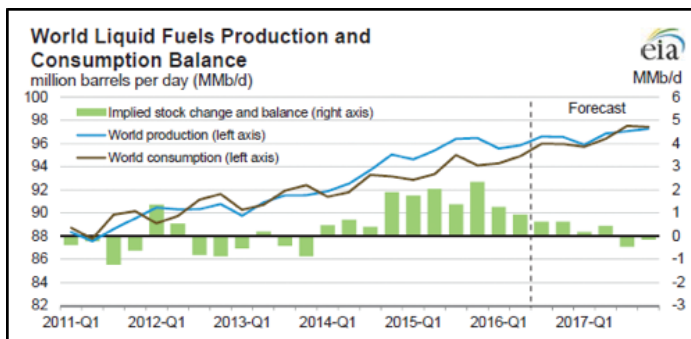
Rig Counts

After over a year and half of declines, the US land rig count bottomed out in May at close to 375, an 80% decline from the peak in November 2014. The rig count increased to almost 500 by the end of August and continues to climb. Most of the gains have been driven by horizontal oil and gas wells. Permian operators remain at the forefront of driving the increases. U.S. offshore rig count is still decreasing and is currently at 18. It is down 50 over the last six quarters. Source - Baker Hughes

Production

West Texas Intermediate (WTI) serves as benchmark for oil pricing in North America, in both the crude oil physical market and the crude oil futures market. It reached \$50 per barrel in early June, sparking optimism for a sustained price recovery. Since then, prices have settled in the low- to mid-\$40s, reflecting concern about oversupply and growth in the global economy. Crude prices are still up from the low of mid \$20s in February, a point most forecasters believe to be the trough.

The US Energy Information Administration forecasts WTI to average \$42 through the remainder of the year and \$52 in '17. The average regular pump price of gasoline is forecast to be \$2.26/gallon, almost -15% YoY change.



Source - U.S. Energy Information Administration

The EIA estimated June '16 world production at 96.3 million barrels per day (MMbbl/d) with world consumption 95.6 MMbbl/d. Consumption is not expected to exceed production until mid-'17 as shown in the graph above.

US crude oil production is projected to decrease from an average of 9.4 million b/d in 2015 to 8.7 million b/d in 2016 and 8.3 million b/d in 2017. EIA estimates that onshore crude oil production will continue declining until mid-2017 at least and that overall US crude oil production will remain below the 9.7 million b/d level reached in April 2015 at least for next few years.

OPEC Update

Gabon rejoined OPEC as of July 1, following a 21-year hiatus. Gabon produces more than 0.2 million b/d of crude oil. Iran has not been able to increase its crude exports for the past three months. OPEC production is at historical high levels, and production gains from Iran, Iraq and Saudi Arabia more than offset production losses from Nigeria, Libya and Venezuela. Source- Petro-Logistics SA

Supply and demand will need to balance before prices rally to sustained higher levels.

At the end of the day, we will likely hit resistance in oil prices before we see some sustainable gains in the oil price.

SPE-GCS UPDATE

Joint Social Event Attracts 150

On August 17th, 2016 the SPE- GCS Young Professionals in conjunction with the SPE-GCS Business Development group organized a successful networking event to kick off the SPE YP year. This annual event was organized to match mentors and mentees from the two diverse groups in oil and gas to share knowledge and network, and announce the events planned throughout the year.

Sporting Clays Raises Almost \$17,000

The 16th annual SPE Gulf Coast Sporting Clays Tournament was held on August 5th at the Westside Sporting Grounds. A total of 31 teams and 155 shooters participated in the event. Thanks to the committee's chair Paul Conover and his team for putting on a well-run and successful event. If you are interested in helping with next year's event, please contact Paul and his contact information is listed in this newsletter.

Kick-Off a Success at RAC

For the first time in SPE GCS, SPE GCS Annual Kick-Off was held on August 23th at a no-cost venue, resulting in savings of USD 8000. Thanks to RAC conference center for hosting the event. Over 120 members attended the event. Section leaders provided an update on the section, upcoming changes in website, staffing and what will be the key drivers in the coming year.

Stay engaged, stay safe,

Deepak M. Gala

Is SPE-GCS meeting your expectations?

We challenge you to send us your feedback on an event you attended, the Connect newsletter or anything else related to SPE-GCS. Write us at spe-gcs@spe.org or directly at Deepak.Gala@shell.com

October 2016

CONTENTS

9 STUDY GROUPS

- 9 Northside**
10.4.16
Understanding Liquid Loading Will Improve Well Performance
- 11 Research & Development**
10.6.16
Internet of Things - Hype or Operational Improvement Opportunity?
- 12 HSSE-SR**
10.11.16
Measuring Sustainability Performance
- 13 Drilling**
10.12.16
Micro Dogleg Detection with Continuous Inclination Measurements and Advanced BHA Modeling
- 15 General Meeting**
10.13.16
Guidance for Decision Quality for Multi-Company Upstream Projects
- 16 Permian Basin**
10.18.16
State of the Permian Basin: A Panel Discussion
- 17 Reservoir**
10.18.16
Hydrocarbon Phase Behavior in Shale Nano-Pores
- 18 Westside**
10.19.16
US Shale: Surviving and Thriving in a Volatile Environment
- 19 International**
10.25.16
International Expectations for Reserves and Due Diligence Reports

- 20 Business Development**
10.26.16
Growing Value in a Highly Competitive Market
- 21 Projects, Facilities & Construction**
10.27.16
Price of Oil

18 COMMITTEES

- 18 Young Professionals**
Houston Heart Walk
- 20 Education**
11.8.16
Save the Date: SPE-GCS Petroleum Engineering High School Recruiting Fair
- 21 Auxiliary**
10.14.16
Informal Lunch: Peli, Peli
- 22 Continuing Education/Career Management**
10.14.16
Accelerated Learning Tutorial: Introduction to Well Testing and Pressure Transient Analysis
- 22 Young Professionals**
10.22.16
Rebuilding Together Houston
- 23 Continuing Education/Career Management**
10.21.16
Networking and Mentoring to Build Beneficial Relationships
- 23 Young Professionals**
10.2.16
Volunteering at The Beacon
- 24 Education**
Where Are They Now: Ravi Meka

P. 27



- 24 Education**
Scholarship Fund Update

25 MORE

- 25 Members in Transition (MiT)**
10.7.16
Ninth Seminar Series
- 26 SPE-GCS 2016 Mergers, Acquisitions & Divestments Symposium**
10.20.16
Hosted by Business Development Study Group
- 27 SPE-GCS 33rd Annual Tennis Tournament**
11.3.16 – 11.4.16

5 IN EVERY ISSUE

- 5 Volunteer Spotlight**
Abe Abraham
Venkata Ajay Gundepalli
- 6 Then & Now**
Buddy Woodroof
- 29 SPE-GCS Student Chapter Section**
Rice
TAMU
University of Houston

BOARD OF DIRECTORS MEETING
THURSDAY, OCTOBER 20 | 7:30 TO 10:30 AM | HOUSTON SPE OFFICE



Navigate uncertain times.
Rethink how you work.

Entero[®] MOSAIC[™]

Reserves, Economics, and Decline Software

Isn't it time to stop manipulating data through the backend, creating manual queries to report in Excel, questioning your application security, getting frustrated with poor scenario comparisons, or using 3rd party tools to enter and edit data?

Entero MOSAIC delivers *ASSET INTELLIGENCE* to help you do your work faster, with less effort. It is **one comprehensive solution** that supports corporate, project, and well level processes for reserves, economics, and declines.

- ◊ **EFFICIENCY:** Experience up to 50% in productivity gains
- ◊ **SPEED:** Go from weeks to hours in entry, editing, evaluating, reconciling, and reporting
- ◊ **INTEGRITY:** Have confidence in your data with better visibility
- ◊ **TRUST:** Improve security through role based user/data management
- ◊ **INSIGHT:** Built-in stored results with scenario comparisons at the portfolio level

Learn more at www.entero.com/mosaic, or call toll-free at 877.261.1820.

entero
energy software

Spotlight On SPE-GCS

VOLUNTEERS



ABE ABRAHAM

This month, the SPE Gulf Coast Section is excited to feature Abe Abraham as Volunteer of the Month. Abe started to actively participate in the SPE-GCS after attending Roughneck Camp 2014. Over the last three years, Abe has held various roles with increasing responsibility: Continuing Education Coordinator, Emerging Engineers Conference (EEC) 2015 Coordinator, and the Co-Chair for Roughneck Camp 2016. Next year, he will serve as the Co-Chair for EEC 2017.

Abe is an Associate Engineer at Eagle Energy in Houston, assisting the operations team with drilling and completions for the US onshore assets. He earned his bachelor of science degree in mechanical engineering and master's in petroleum engineering from University of Houston.

As a proud UH alumnus, Abe organizes facility tours and technical workshops for the UH-SPE Student Chapter. He also leads efforts to increase the University of Houston Petroleum Engineering Program's visibility by building relationships with SPE-Gulf Coast Section, and by recruiting graduates to join the SPE-GCS YP Group.

Abe says, "Volunteering with the SPE-GCS YP Group is an excellent opportunity to develop one's leadership skills, network among energy industry leaders, and to make a difference in our community, while meeting like-minded people and making new friends!"

Thank you for all that you do for SPE and for a job well done on this year's Roughneck Camp, Abe!



VENKATA AJAY GUNDEPALLI

This month, the SPE Gulf Coast Section is delighted to feature Venkata Ajay Gundepalli as Volunteer of the Month. After graduating from the Indian Institute of Technology – Kharagpur with a bachelor of technology degree in mechanical and mining engineering, Venkata went on to receive an MS in petroleum engineering from Texas Tech. That's where he got involved with SPE as well by joining the Student Chapter.

He began his career in 2012 as a petroleum engineer with Ingrain Inc. He is currently in a career transition and has more time to dedicate to his SPE volunteer activities.

This year, Venkata co-chaired Roughneck Camp with our other Volunteer of the Month, Abe Abraham. These two did an outstanding job!

Venkata also serves as Networking Coordinator for the Young Professionals Group and Software Training Coordinator for the Members in Transition Group. Additionally, he volunteers for Education Committee events. Since joining SPE, Venkata has served in several other capacities as well. He was Community Outreach Coordinator for the Young Professionals Group, where he organized a Galveston Beach cleanup in collaboration with SPE Cares. He has helped organize events for Volunteer at Beacon, Rebuilding Together Houston, and Energy4Me.

Venkata says he volunteers for a number of reasons: He enjoys helping people; he feels called to share his talents and time with others; he likes meeting people from different backgrounds and cultures; he appreciates having his comfort zone expanded; and he has fun doing it! He also says that SPE has helped him develop technical and leadership skills he otherwise lacked through its challenging and diverse volunteer opportunities.

Thank you for all that you do for SPE and for a job well done on this year's Roughneck Camp, Venkata!

THEN & NOW

COLUMN BY BUDDY WOODROOF

OCTOBER 1956

Dowell pumps the largest frac treatment to-date in the form of a “Flood Frac” containing 250,000 gallons of fresh water and 200,000 pounds of sand at 52 bpm in the Spraberry Formation in West Texas.

What were the average octane ratings for regular and premium grade gasolines circa 1956, you ask? Ninety for regular and 97 for premium (both contained lead antiknock additives in those days).

The first sulfur-mining operation in the open waters of the Gulf of Mexico is planned by Freeport Sulfur Company, tapping an estimated 30-40 million tons under 45 feet of water in the Grand Isle area approximately 6 miles off the coast of Louisiana.

The Maritime Administration and Atomic Energy Commission are reportedly working on designs for a “nuclear-powered tanker,” whose fuel costs would be higher than conventional tankers, but those costs would be more than offset by increased load, higher speed, and other factors.

**East Texas crude oil - \$2.90/bbl;
US active rig count - 2,546**

OCTOBER 1976

The British are lobbying for a piece of the American offshore pie, specifically along the US Atlantic Coast, especially in light of Britain’s open-door policy that has enabled American companies to play a major role in the North Sea.

At present trends, the US is on track to pay \$30 billion this year for petroleum imports.

Governor Edwin Edwards calls a special session of the Louisiana Legislature to review the state’s capital expenditures and the possible need for added petroleum taxes. (Eddie Edwards was without a doubt one of the most colorful politicians in the state of Louisiana’s very colorful political history.)

International exploration is becoming less attractive to US-based international E&P companies, such as the Sun Co. and Socal, due to the growing threats of nationalization and revolution.

US active rig count - 1,787

OCTOBER 1996

In apparent defiance of UN sanctions, China National Petroleum Corporation signs a production-sharing deal for Al-Ahdab oil field in central Iraq, and its implementation merely awaits Saddam Hussein’s approval.

Meanwhile, US majors continue to pursue downstream joint ventures in China, including BP Chemicals signing a letter of intent with Shanghai Petrochemical Company to build an ethylene plant at Shanghai.

Barrett Resources, surprisingly the apparent highest bidder for a single block in the recent western Gulf of Mexico lease sale, is moving internationally for the first time, entering exploration onshore in Peru.

Concerns over production outages in the Gulf of Mexico from Tropical Storm Josephine boost already-strong oil prices to their highest level in five years.

**Light sweet crude oil - \$24.42/bbl;
natural gas - \$2.26/MMbtu;
US active rig count - 819**

THE REST OF THE YARN

This month, we examine Roosevelt’s gifts to America’s future.

Another of TR’s legacies was an unambiguous gift to the future. Teddy was never more himself than when he was outdoors. He loved nature, knew the songs of dozens of birds, loved to ride, climb, hike, and shoot. As a boy he wanted to be a naturalist, and as a president he became the first to make environmentalism a political issue. Under the tutelage of his friends — Sierra Club founder John Muir, who convinced him that the federal government would be a better protector of parkland

than the states, and US Forest Service chief Gifford Pinchot, who wanted strict controls over commercial use of woodlands — Roosevelt learned to shape his love of nature into a policy to defend it. The year after leaving the White House, he explained his philosophy to an audience in Kansas. He recognized the right, he said, even the “duty” of his generation to use the nation’s natural resources. “But I do not recognize the right to waste them,” he added. “Or to rob, by wasteful use, the generations that come after us.”

We are those generations, and we have him to thank not only for the 150 national forests he created, the 51 national wildlife refuges, and the five national parks, but also for the very idea that air, water, forests, and animal life are in our collective safekeeping. If he were alive today, he would be deeply interested in such matters as climate change and the preservation of species.

Next month, an overview of his presidency.

THEN & NOW
OCTOBER
QUIZ

Correct the error in the following statement:
“The new president of Socony Mobil Oil Co. de Venezuela started as a roughneck on a cable-tool rig.”

**ANSWER TO
SEPTEMBER'S QUIZ**

In 1583, oil-producing Newfoundland became England's first possession in North America.

If you would like to participate in this month's quiz, e-mail your answer to contest@spe.org by noon October 15. The winner, who will be chosen randomly from all correct answers, will receive a \$50 gift card to a nice restaurant.

2015 PROFESSIONAL ENGINEERING EXAM RESULTS FOR PETROLEUM ENGINEERING

First Timers 61% Second+ Timers 32%
National Average Pass Rate 54%

PE Exam Application Deadline Date: October 1, 2016
Next Petroleum PE Exam Date: October 28, 2016

2016 HOUSTON COURSES
October 22 – 26, October 26 – 30

P: 405-822-6761 | E: bingwines@cox.net
winrockengineeringinc.com

0553

DAYS

0000

WORKOVERS

SCALEGUARD

Proppant-delivered
scale-inhibiting technology

Reduce your LOE with the longest-lasting scale inhibition treatment by far...and counting

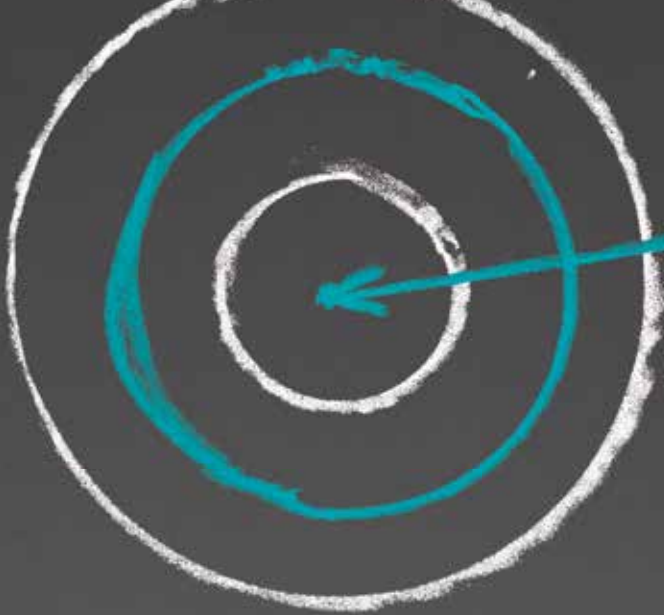
SCALEGUARD® proppant-delivered scale-inhibiting technology is a unique, long-term well maintenance solution that assures optimal production and significantly reduces LOE.

Each treatment can be designed to last the life of the well, and one Uinta operator is saving over \$160,000 per well in maintenance costs each year.

carboceramics.com/scaleguard

CARBO

Production. Enhanced.



YOU CAN MEET
YOUR TARGETS.

OR BE ONE.



It all depends on the accuracy of your production forecast. And no engineering and reserves software delivers accuracy like Value Navigator®.

Nail your forecast. Ace your economics. Perfect your reserves. Boost productivity. Deliver on production targets and netbacks. Happy CEO. Happy investors. Happy you. Val Nav is engineered for results like that – and times like these.

More than 300 of North America's top E&P companies choose Val Nav. Find out why.

Visit energynavigator.com/targets or call Lynn Babec at 1-866-856-9544.



Val Nav®

by ENERGY NAVIGATOR

NORTHSIDE

Understanding Liquid Loading Will Improve Well Performance

Operators of natural gas wells have long used the Turner equation to calculate critical gas velocity to keep gas wells unloaded. The original Turner method was developed for vertical wells, with analysis performed using wellhead conditions. However, this methodology is only applicable to vertical wells with a simple completion geometry. Modern well design most often employs complex geometries, including slant, s-shaped and horizontal well paths, as operators seek to reduce costs and the environmental footprint while maximizing the production rate potential. These geometries require special consideration when estimating critical velocity. Wells produced below the critical velocity will develop a static liquid column that can damage the reservoir and impede productivity. Proper diagnosis of this problem will improve well performance and ultimate recovery.

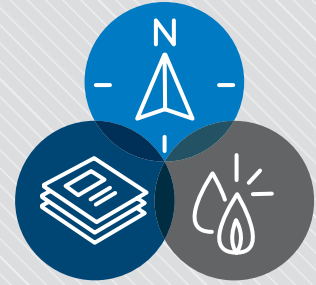
This presentation will provide an overview of historical techniques for detecting liquid loading and provide modifications to the classical Turner method that addresses contemporary well designs. The discussion will include recent advances that address the proper evaluation point based on reservoir and well conditions. The talk will also compare the modified Turner method to the use of multiphase flow pressure drop models for predicting liquid loading and will demonstrate the superiority of using a modified Turner method to determine critical velocity. Flow loop videos will illustrate the result of producing below the critical velocity. Potential improvements will be quantified through field examples for conventional, unconventional and horizontal well applications.

ROB SUTTON



Rob Sutton is a petroleum consultant in Houston. He started his 35-year career with Marathon Oil Company's Gulf Coast Offshore District in 1978. In 1985, he moved to Marathon's Denver Technology Center, where he worked in the Reservoir Management Department and developed Marathon's in-house nodal analysis software. He moved with the technology organization to Houston in 2001 and retired from Marathon in 2014.

Sutton received a BS in petroleum engineering from Marietta College in Ohio. He also holds an MS in petroleum engineering from the University of Louisiana at Lafayette. He has authored 28 papers for SPE and has 10 journal publications. He wrote the chapter on oil PVT correlations in the recently updated Petroleum Engineering Handbook and co-authored a chapter in Gas Well Deliquification. Sutton received SPE's 2014 Production and Operations Award. He was also a SPE Distinguished Lecturer for the 2012-13 and 2015-16 lecture seasons.



EVENT INFO

Tuesday 10.4.16

12:00 PM - 1:30 PM

SPEAKER

Rob Sutton
Consultant

Robert P Sutton Consulting

LOCATION

Southwestern Energy Company
10000 Energy Dr
Spring, TX 77389

EVENT CONTACT

Jon Spencer
281-844-0104

jon.spencer@tracercoco.com

MEMBERS

\$40/50 Walk-In

NON-MEMBERS

\$50

STUDENT/MIT

\$15

PHDWIN™

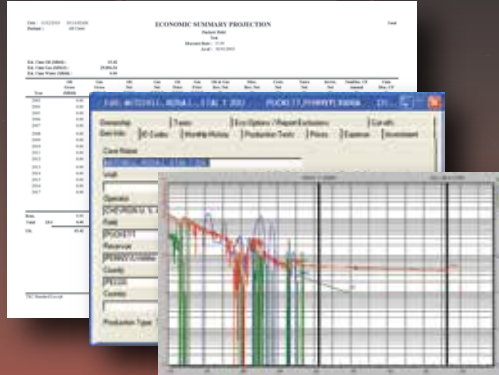
Integrated Economics & Decline Curve Analysis

NOW EVEN MORE POWERFUL WITH

PHDRMS™

Reserves Management System

The *complete solution* for evaluating, managing, and reporting reserves and performance data.



Schedule an **online** presentation
TODAY!

TRC Consultants, LC 888-248-8062 www.phdwin.com

Visualize the Possibilities



At Petrolink we see things a little more clearly.

You can too with our advanced real-time visualization tools. From customizable displays and collaborative environments to powerful analytics and reporting, we help you spot trends, gain insights and see the potential in your operations.

www.petrolink.com



INWOOD SOLUTIONS, LLC
Enhanced oil recovery • Petroleum engineering

Petroleum Engineering
Enhanced Oil Recovery
Project Management
Profitability Analysis
Reservoir Simulation

Dr. J Roger Hite
Inwood Solutions, LLC
(713) 385-5343
hite@inwood-solutions.com

RESEARCH & DEVELOPMENT

Internet of Things – Hype or Operational Improvement Opportunity?

There has been a constant barrage of articles on the Internet of Things (IoT). Is this hype or an opportunity for upstream operators to reduce costs and increase production through better insight and control? This session will provide a pragmatic look at opportunities to innovate by leveraging “things” across the enterprise. Among the challenges to leveraging IoT are fragmentation due to different protocols in hardware and software of different edge (IoT) assets to creating a robust end-to-end integration from the edge to the enterprise. This session will explore emerging trends and new applications in IoT, discuss approaches to operationalizing IoT value, and offer insights from other industries that are embracing IoT.

DR. SETRAG KHOSHAFIAN

Dr. Setrag Khoshafian is one of the industry’s pioneers and recognized experts in digital enterprises, especially digital transformation through the Internet of Things (IoT), Evolved CRM, and intelligent BPM. He has been a senior executive in the software industry for the past 25 years. He has invented, architected and steered the production of several enterprise software products and solutions. Currently, he is Pega’s Chief Evangelist and strategic IoT and BPM technology thought leader involved in numerous technology, thought leadership, marketing, alliance, and customer initiatives. The majority of his time is spent with Fortune 500 companies, specifically on their digital transformational journeys leveraging digital technologies (social-mobile-cloud-analytics-IoT and BPM/DCM).



EVENT INFO

Thursday 10.6.16

11:30 AM -1:00 PM

SPEAKER

Dr. Setrag Khoshafian
Chief Evangelist & VP of
BPM Technology, Pegasystems

LOCATION

Norris Center - Westchase
9990 Richmond Ave, Ste 102
Houston, TX 77042

EVENT CONTACT

Kitty Harvey
281-901-3245
Kitty.harvey@c-a-m.com

MEMBERS

\$40/50 Walk-In

NON-MEMBERS

\$50

STUDENT/MIT

\$15



Is challenging project documentation draining your resources?

WE can help with;

- ✓ Technical Writing
- ✓ Data Book Compilation
- ✓ Project Management
- ✓ Printing & Binding

ZAETRIC® 281-298-1878 www.zaetric.com



EVENT INFO

Tuesday 10.11.16
11:30 AM - 1:00 PM

SPEAKER

Flora Moon
 Sustainability Practice Director
 Expressworks International

LOCATION

Marathon Oil Tower
 5555 San Felipe St
 Houston, TX 77056

EVENT CONTACT

Kathleen Antoine
 713-496-5456
 Kantoine@hess.com

MEMBERS

\$40/50 Walk-In

NON-MEMBERS

\$50

STUDENT/MIT

\$15

HSSE-SR

Measuring Sustainability Performance

Sustainability performance is integral to the way companies like Ikea, Unilever and Novo Nordisk conduct business. When energy industry business decisions are made to “include” sustainability, people can find themselves at a loss to describe what this really means. Measuring sustainability performance can be an even more abstract concept. Aggregation of sustainability data is done for many reasons, some central to our business, others to satisfy external needs.

Appropriate measures of sustainability performance depend on where you and your company sit on the sustainability maturity curve and which segment, department or organization is tasked to carry out the work. Imagine you’ve been tasked to make a project or program more sustainable. Where do you start? Often, understanding what others have done, having the right people in the room to create a game plan, and determining how performance gets measured will help you achieve your sustainability goals. Why is this important? If you measure it, it will get done.

FLORA MOON



Flora Moon is Sustainability Practice Director at Expressworks, a change management consultancy. For over 15 years she has adeptly guided petrochemical clients like DuPont, Williams, Halliburton, and Chevron to navigate systemic and cultural change. In April 2016, she moderated the SPE panel on sustainability and performance in Stavanger, Norway. She co-leads the SPE Sustainability Technical Section Performance Sub-Committee.

Moon has created sustainability capability and capacity in communities serving on the Houston (Texas) Resilience Committee and as project manager/special advisor to a number of public and private projects. She is also the co-designer of a private sustainability investment strategy for Merrill Lynch.

MUDPRO
 Drilling Mud Reporting Software

Pegasus Vertex, Inc. | Drilling Software
 (713)981-5558 | info@pvisoftware.com

DRILLING

Micro Dogleg Detection with Continuous Inclination Measurements and Advanced BHA Modeling

Micro doglegs are a natural effect of any vertical or directional well that can explain a wide variety of downhole problems, from additional torque and drag to an inability to run completions. These doglegs are inherent to the rock-drilling process and can generate borehole spiraling in vertical sections or slide-rotary pattern when using a steerable mud motor in horizontal sections. Standard surveying every 95 feet or so cannot detect these micro doglegs and only gives a partial look at the actual well path.

This presentation will show the results of a case study in unconventional wells where BHA modeling and continuous inclination measurements were compared to identify the slide rotary pattern produced by the steerable motor and its associated micro doglegs.

STÉPHANE MENAND



Stéphane Menand is the President of DrillScan US Inc., based in Houston. Previously, he held a research position at Mines ParisTech University. He has 18 years of experience in the oil and gas industry, mainly as an R&D project manager in directional drilling, drillstring mechanics (torque, drag and buckling), drilling dynamics, and drill-bit performance. Menand has authored SPE and other technical papers and holds patents. He earned a PhD in drilling engineering from Mines ParisTech. Menand serves on the *Journal of Petroleum Technology Editorial Committee* and is associate editor of *SPE Drilling and Completions Journal*.



EVENT INFO

Wednesday 10.12.16

11:30 AM – 1:30 PM

SPEAKER

Stéphane Menand
President
DrillScan US Inc.

LOCATION

The Petroleum Club
1201 Louisiana St, 35th Floor
Houston, TX 77002

EVENT CONTACT

Tom Wick
713-806-2631
fieldwick2@gmail.com

MEMBERS

\$40/50 Walk-In

NON-MEMBERS

\$50

STUDENT/MIT

\$15

Rose & Associates

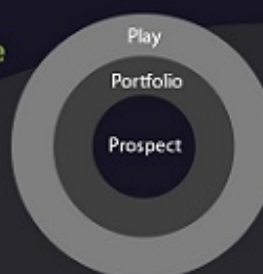
Courses Consulting Software

Unconventional Resource
Valuation and Assessment Course
(3 to 5 days)

UCRA Software

To model, value and risk
drilling in resource plays

www.roseassoc.com



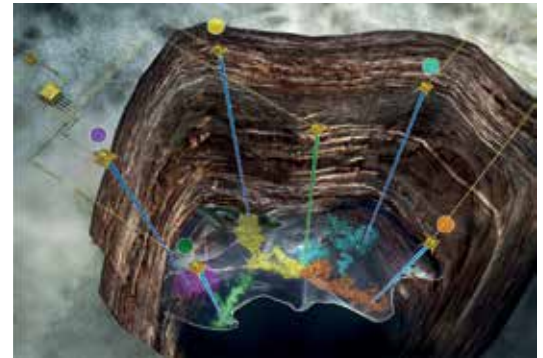


Johnson Matthey

Understand well connectivity using tracer technology

A Tracerco interwell chemical tracer study gives you critical data to help you optimize field development.

- Well connectivity determination
- Cross flow evaluation of faults and layers
- Pore volume swept calculation
- Sweep efficiency measurement
- Residual oil saturation determination



Flood smart, recover more with Tracerco technologies

To learn more about our local field and lab capabilities contact:

4106 New West Drive, Pasadena, TX 77507, USA

Tel: +1 281-291-7769 | Fax: +1 281-291-7709 | <http://hubs.ly/H03-lkQ0>



No-Cost MPD or UBO SCREENING

Get an unbiased review to address your MPD needs using **ADVANCED HYDRAULIC SOFTWARE**

- Get insight into managing your challenging wells
- Review your best-fit solution: Conventional, MPD, UBO
- Get a blueprint for all your service needs (training, execution, personnel, analytics)



- Walk away with your analysis and results
- No-obligation consultation
- By appointment only, Thursday afternoons in Houston, TX, USA

Signa Engineering Corp.
Houston, TX USA, 281.774.1000
www.signaengineering.com

Contact:
Dr. Sagar Nauduri, PE
281.774.3116
snauduri@signa.net

Reduce water. Save money.

Hexion's AquaBond™ proppants reduced water by 92% without hindering the flow of oil compared to traditional resin coated sand in laboratory testing.

AquaBond proppants are enabling operators to reduce formation water disposal costs, maximize well profitability, and lower cost per BOE.

Visit us at hexion.com/oilfield

HEXION
Helping you make it in today's world.

© 2016 Hexion Inc. All rights reserved. ® and ™ denote trademarks owned by or licensed to Hexion Inc.

GENERAL MEETING

Guidance for Decision Quality for Multi-Company Upstream Projects

Regardless of oil price, large joint venture upstream projects have significantly underperformed on cost, schedule and production. Smaller upstream projects have not fared much better. Poor decision quality played a significant role in this underperformance.

For that reason, a group of experienced subject matter experts from across the oil and gas industry worked collaboratively to develop a joint technical report focused on good decision quality. Additional industry input was obtained from a discussion at SPE's Annual Technical Conference and Exhibition in September 2015. The resulting report provides practical advice on the application of decision quality principles during all phases of a project's life cycle, including exploration, development, and operational phases.

The subject matter experts focused on "decision quality" as defined by the Society of Decision Professionals (SDP) in terms of a Decision Makers' Bill of Rights. The focus of this report is on gaining alignment as much as understanding differences of the participants regarding the opportunity, alternatives, information, values, trade-offs, logical analysis, and commitment to action.

SPE and SDP sponsored this effort and believe this technical report to contain valuable information that should be shared broadly with our communities.

CRAIG MCKNIGHT, JD, CPA



Craig McKnight recently retired as the Manager of Decision & Economic Analysis for Deepwater Exploration & Projects and Gulf of Mexico business units for Chevron. He began his career in 1980 as an accountant and held a variety of roles at Chevron, including capital stewardship champion, international gas regional commercial manager - Latin America, international gas decision analysis team leader, planning manager, and executive staff. He has also held positions outside Chevron as an investment banker, lawyer, and tax specialist.

He is a member of the Society of Decision Professionals (SDP) and the Decision Analysis Affinity Group. He is a board member of the local Houston chapter of SDP. He was a co-author of the recently published technical paper on decision quality sponsored by SDP and SPE. He has taught commercial negotiations and decision analysis for many years.

McKnight received an accounting degree from Sam Houston State University and became a CPA in 1985. He received his law degree from South Texas College of Law in 1992, along with his law license.

ONLINE REGISTRATION: spegcs.org/events/3356/



EVENT INFO

Thursday 10.13.16

11:30 AM - 1:00 PM

SPEAKER

Craig McKnight, JD, CPA
Chevron

LOCATION

The Petroleum Club of Houston
1201 Louisiana St, 35th Floor
Houston, TX 77002

EVENT CONTACT

barryfaulkner@earthlink.net
281-627-8790

MEMBERS

\$40/50 Walk-In

NON-MEMBERS

\$50

STUDENT/MIT

\$15



EVENT INFO

Tuesday 10.18.16

11:30 AM - 1:00 PM

SPEAKER

Anton Babaniyazov
Staff Production Engineer
ConocoPhillips

Billy Ray
North American Technology Director
Halliburton

Ken Lizak
Director of Stimulation Design
Occidental Petroleum

LOCATION

Norris Center - Westchase
9990 Richmond Ave, Ste 102
Houston, TX 77042

EVENT CONTACT

Amy Timmons
atimmons@flogistix.com

MEMBERS

\$40/50 Walk-In

NON-MEMBERS

\$50

STUDENT/MIT

\$15

PERMIAN BASIN

**State of the Permian Basin:
A Panel Discussion**

The Permian Basin Group will be hosting a panel discussion discussing general and broad successes, challenges, applications, and production optimization in the Permian Basin including representatives from Occidental Petroleum, ConocoPhillips, and Halliburton.

ANTON BABANIYAZOV



Anton Babaniyazov leads implementation of infill drilling and recompletion programs in Permian Conventional Asset. Before ConocoPhillips, Babaniyazov served in a variety of domestic and international upstream production and development positions for Schlumberger - Integrated Project Management (IPM), including Drilling Engineer in Oman, Facility and Production Engineer in South Africa offshore, Production Lead for gas assets in Romania, and reservoir and production engineering assignments in West Texas. He is a graduate of Tomsk Polytechnic University with MS degree in petroleum engineering.

BILLY RAY

Billy Ray leads the geographic technology teams across North America and manages the College of Completion Engineering and Associate Technical Professional programs. He provides guidance and oversight to advance Halliburton as a technology leader with customers, suppliers, and institutions. Ray led the strategic commodity delivery process of sand and proppants for North America Operations and Halliburton's real-time Sand War room in Houston. Ray joined Halliburton in 1995 as a field engineer in Hobbs, NM. Ray holds a bachelor's degree in petroleum engineering from Texas Tech University. He has authored and co-authored numerous technical publications and holds several patents.

KEN LIZAK



Ken Lizak leads engineers responsible for stimulation design and new technology implementation in the unconventional resource plays at Oxy. Before this position, he spent four years as a Senior Completions Advisor at Apache Corporation. Lizak also served five years as a Senior Production Technologist and Sand Control Subject Matter Expert working with Shell International Exploration and Production. His previous experience includes 20 years at Halliburton with assignments including West Texas, Venezuela, Colombia, Argentina, Houston, and Saudi Arabia. He received a BS in petroleum engineering from Texas Tech University in 1985. He has authored and coauthored numerous SPE and OTC papers.

RESERVOIR

Hydrocarbon Phase Behavior in Shale Nano-Pores

Phase behavior in shale remains a challenging problem in the petroleum industry due to many complexities. One complexity arises from strong surface-fluid interactions in shale nano-scale pores. These interactions can lead to a heterogeneous distribution of molecules, which conventional bulk-phase thermodynamics fails to describe. The majority of current models for phase behavior in shale are based on bulk-phase thermodynamics. There are currently very limited experimental data for hydrocarbon phase behavior in shale systems.

This talk will present recent findings by a multidisciplinary research team at Texas A&M on the hydrocarbon phase change in nano-scale capillaries using experiments, molecular simulation, and a pore-size-dependent equation of state. The team has used two experimental approaches based upon selected "model" porous materials: a) combination of a nano-channel device and epi-fluorescence microscopy, and b) modulated differential scanning calorimetry to accurately measure the effect of confinement on hydrocarbon phase behavior in shale. The talk will also cover recent results using molecular simulation and a pore-size-dependent equation of state to model these experiments.

HADI NASRABADI



Hadi Nasrabadi is an Assistant Professor and the Douglass Von Gonten Faculty Fellow at the Harold Vance Department of Petroleum Engineering at Texas A&M University. Before joining Texas A&M in 2013, he worked for five years at the Petroleum Engineering Program at Texas A&M University at Qatar as Assistant Professor. In 2002, Nasrabadi received his BS degree in civil engineering from Sharif University in Iran. He received his PhD in petroleum engineering from Imperial College, London, in 2006. His research interests include hydrocarbon phase behavior and flow in shale reservoirs, multiscale reservoir simulation using the lattice Boltzmann method, and compositional simulation.



EVENT INFO

Tuesday 10.18.16

11:30 AM -1:00 PM

SPEAKER

Hadi Nasrabadi
Assistant Professor
Texas A&M University

LOCATION

Sullivan's Steakhouse
4608 Westheimer Rd
Houston, TX 77027

EVENT CONTACT

Alexandra Martinez
956-249-0994
adinorah.martinez@gmail.com

MEMBERS

\$40/50 Walk-In

NON-MEMBERS

\$50

STUDENT/MIT

\$15

Critical Well Engineering

www.vikingeng.net

Petroleum Consulting
Multi-String Analysis
Material Selection
Well Construction
QA/TPI Surveillance
Failure Investigation
Training

VIKING
ENGINEERING

The Way Tubular Design Should Be



EVENT INFO

Wednesday 10.19.16

11:30 AM - 1:00 PM

SPEAKER

Jonathan Garrett
Principal Analyst
Lower 48 Upstream Research
Wood Mackenzie

LOCATION

Norris Center - Westchase
9990 Richmond Ave, Ste 102
Houston, TX 77042

EVENT CONTACT

Stephen Loving
713-328-2244
Stephen.loving@corelab.com

MEMBERS

\$40/50 Walk-In

NON-MEMBERS

\$50

STUDENT/MIT

\$15

WESTSIDE

US Shale: Surviving and Thriving in a Volatile Environment

The presentation will cover Wood Mackenzie's forecasts for rig count and production by the major producing regions. It will also cover break-evens and the economics of each for the key onshore plays and where Wood Mackenzie sees the best opportunities for development going forward. Finally, there will be a discussion of OFS inflation (deflation) and how that is expected to evolve.

JONATHAN GARRETT

Jonathan Garrett works on the US Lower 48 Upstream Research team at Wood Mackenzie, focusing on the Rocky Mountains and Northeast regions. He specializes in decline curve analysis, economic modeling, and onshore asset valuation. Recent work includes studying Bakken operator activity, production trends, crude export capacity, and enhanced completions. Before joining Wood Mackenzie, Garrett worked for Schlumberger, both as an offshore field engineer and in completions product development. His work with Schlumberger mainly focused on reservoir monitoring and control. Garrett holds MSE and BSE degrees in industrial and operations engineering from the University of Michigan.

SAVE THE DATE

YP Houston Heart Walk 2016

SATURDAY

11.5.16

8:00 AM -1:00 PM

Please join SPE-GCS Young Professionals in their support of the American Heart Association, the largest voluntary health organization dedicated to defeating heart disease, stroke, and other cardiovascular diseases.

Our team is participating in the American Heart Association's Heart Walk to promote physical activity to build healthier lives. Imagine the impact if we reduce death and disability from cardiovascular diseases and stroke — the nation's No. 1 and No. 5 killers — by 20% by 2020!

LOCATION

Texas Medical Center
SEL Lot
1522 William C Harvin Blvd
Houston, TX 77030

EVENT CONTACT

Catalina Leal
832-729-5462
Catalina.leal
@bakerhughes.com

INTERNATIONAL

International Expectations for Reserves and Due Diligence Reports

It's one of the more troublesome issues within the world of reserves and valuation: What do we mean when we say we are assessing "proved" reserves? The international standard for the classification and categorization of reserves and resources is the Petroleum Resources Management System (or PRMS) promulgated by the SPE, AAPG, SPEE, WPC, and SEG in 2007 with further guidelines published in 2011.

This talk will address the confusion around the term "proved." Attendees will learn how the PRMS defines the term. They will also learn how international operators should consider the uncertainty associated with a development plan and how to value "contingent resources" as defined by the PRMS.

ANDY KIRCHIN



Andy Kirchin is the Executive Vice President in charge of RPS Group's Houston upstream consulting and training services. RPS brought Kirchin to Houston in 2011 to help grow its US consulting business and facilitate an effective exchange of skills between its international offices. Before moving to the US, Kirchin was the Operational Director in charge of RPS Group's City of London office. He has more than 29 years of industry experience and has worked on projects in many of the world's oil and gas regions on both conventional and unconventional plays.



Guar Gum Powder of various grades · Readily available in Houston for immediate delivery · We are one of the **largest stockist** of high performing Guar Gum Powder

16000 Barkers Point Lane Ste 228 | Houston, TX
832.314.7317 | www.UnityOilEnergy.com



EVENT INFO

Tuesday 10.25.16

11:30 AM - 1:00 PM

SPEAKER

Andy Kirchin
Executive Vice President
RPS Group Plc

LOCATION

The Petroleum Club of Houston
1201 Louisiana St, 35th Floor
Houston, TX 77002

EVENT CONTACT

Mary Beth Snodgras
713-882-3665
mbs@localcontent.com

MEMBERS

\$40/50 Walk-In

NON-MEMBERS

\$50

STUDENT/MIT

\$15



EVENT INFO

Wednesday 10.26.16

5:00 PM - 7:30 PM

SPEAKER

Fred L. Callon
CEO
Callon Petroleum Company

LOCATION

TBD

EVENT CONTACT

Cody Felton
281-221-3042
Cody.Felton@energynet.com

MEMBERS

\$40/50 Walk-In

NON-MEMBERS

\$50

STUDENT/MIT

\$15

BUSINESS DEVELOPMENT

Growing Value in a Highly Competitive Market

Throughout the commodity downturn, the Permian Basin has established itself as home to the premier onshore resource plays and has been the site of most of the major milestones that hallmark the recent oil price “green shoots.” After a distinct pivot from a Gulf of Mexico player to a pure-play Permian operator, Callon Petroleum has continued to prove its agility with recent transformative acquisitions in the core of Midland Basin.

FRED L. CALLON



Fred L. Callon is Chairman of the Board and Chief Executive Officer of Callon Petroleum Company. Founded in 1950, Callon Petroleum Company has operated onshore in the Gulf Coast and Mid-Continent regions as well offshore in the Gulf of Mexico. Today, the company’s operations are focused exclusively in West Texas in the Permian Basin. Before joining Callon Petroleum Company, he was employed by KPMG. He earned a BS degree in economics from Millsaps College and a MBA degree from the Wharton School of the University of Pennsylvania. He has over 40 years of experience in the oil and gas industry.

EDUCATION COMMITTEE SAVE THE DATE

Petroleum Engineering High School Recruiting Fair

TUESDAY

11.8.16

7:00 PM - 9:00 PM

To encourage high school students to consider careers in the oil and gas industry, the SPE-GCS will hold a recruiting fair for the Greater Houston area on November 8. All area high school students are welcome, as well as parents and teachers.

The two-hour event will have a 30-minute keynote followed by a recruiting fair, where students can meet with representatives from various universities to discuss their engineering programs and how they relate to oil and gas.

LOCATION

Memorial High School
935 Echo Lane
Houston, TX 77024

EVENT CONTACT

Kory Izard
713-372-3762
Kory.izard@chevron.com

PROJECTS, FACILITIES & CONSTRUCTION

Price of Oil

Continued downward pressure on oil prices means ongoing capital expenditure cuts across the exploration and production (E&P) sector. What level of sustained reinvestment is required to offset depletion and meet demand growth for both oil and natural gas going forward?

We'll discuss:

- Levels of capital spending cuts since 2014 compared to historical reinvestment rates.
- Estimates of capital required over the next five years to replace depletion and meet expected growth.
- The cash-flow outlook for E&P businesses as a guide to their capacity to invest.
- Hard choices required to balance capital investment with other demands on cash flow.
- Ways E&P businesses can balance immediate cash-preservation needs vs. future new-production-investment needs.

ANDREW SLAUGHTER



Andrew Slaughter is the Executive Director of the Deloitte Center for Energy Solutions. He develops strategic analysis and decision-focused insights for clients in the oil and gas industry and the power and utilities sector. Previously, he was Vice President Energy Research for IHS. Before joining IHS in mid-2012, Slaughter was Business Environment Manager for Shell's Upstream Americas energy and petroleum business. Slaughter has been an active participant in a leadership role for recent National Petroleum Council studies undertaken for the US government. He is a member of the *Oil and Gas Journal* Editorial Advisory Board and is a regular contributor to industry forums.



EVENT INFO

Thursday 10.27.16

4:00 PM - 5:45 PM

SPEAKER

Andrew Slaughter
Executive Director, Deloitte
Center for Energy Solutions
Deloitte LLP

LOCATION

TBD

EVENT CONTACT

Sean Liburd
713- 412-4310
sliburd@gateinc.com

MEMBERS

\$40/\$50 Walk-In

NON-MEMBERS

\$50

STUDENT/MIT

\$15

Committee: Auxiliary

Informal Lunch

The SPE-GCS Auxiliary will not have a formal luncheon and program in October. Meet us for an informal lunch at Peli Peli for conversation and friendship with separate checks.

LOCATION

Peli Peli - Vintage Park
110 Vintage Park Blvd
Houston, TX 77070

EVENT CONTACT

Evelyn Earlougher
281-419-1328
earlougher@comcast.net

EVENT INFO

FRIDAY

10.14.16

11:00 AM

Accelerated Learning Tutorial: Introduction to Well Testing and Pressure Transient Analysis

Agenda

- Introduction
- The Value of Well Testing
- Fundamentals of Flow in Porous Media
- The Reason of Type Curves and Diffusivity Equations
- Modeling and Implementation
- Flow Regimes
- Well Test Analysis
- Gas Well Testing
- Naturally Fracture Reservoirs
- Hydraulic Fractured Reservoirs
- Horizontal Wells
- Low Permeability Reservoirs
- Analysis of Production Data and Its Application



FABIÁN VERA

Fabián Vera is a Reservoir Engineer at CDEUS in Houston. He is currently assigned to an overseas project. Previously, he was Reservoir Engineer for the Applied Reservoir Technology Division at Baker Hughes Incorporated. He is author of multiple peer-reviewed publications and a frequent speaker at conferences. He has served as

Ecuador SPE Young Professional Chair, SPE TAMU Committee member, and SPE Young Professional Secretary for the Gulf Coast Section. He has been Co-Chair of the ATCE Unconventional Reservoir Session since 2014.

EVENT INFO

FRIDAY

10.14.16

8:30 AM - 4:30 PM

SPEAKER

Fabián Vera
Reservoir Engineer
CDEUS

LOCATION

SPE Houston Training Center
10777 Westheimer Rd, Ste 1075
Houston, TX 77042

EVENT CONTACT

Sunil Lakshminarayanan
281-248-1443
sunil_lakshminarayanan@oxy.com

MEMBERS/NON-MEMBERS

\$350

MIT/STUDENTS

\$175/\$100

REGISTRATION

spgcs.org/events/3372/

Rebuilding Together Houston

Rebuilding Together - Houston (RT-H) is Houston's largest community outreach organization working to preserve affordable homeownership and revitalize neighborhoods. RT-H provides home repair and renovation services at no cost to low-income homeowners in need, such as the elderly, individuals with disabilities, veterans, and people impacted by natural disasters. RT-H makes improvements such as constructing wheelchair ramps and installing handrails, doors with peepholes, and security locks for homeowners.

RT-H needs volunteers of all experience levels to help with its Fall 2016 Home Repair Program. The YP group will lead a team on October 22 and (if work is not complete) October 29. Please join us as we use our engineering skills to give back to our Houston community.

EVENT LINK, WEEKEND 1

spgcs.org/events/3319/

EVENT LINK, WEEKEND 2

spgcs.org/events/3320/
(second weekend only if required)



EVENT INFO

SATURDAY

10.22.16

7:30 AM - 5:00 PM

LOCATION

TBD (Check online for updates)

EVENT CONTACT

Pervez Agwan
832-859-9399
pervezagwan@gmail.com

Catalina Leal
catalina.leal@bakerhughes.com

Antonio Lazo
Antonio.lazo@chevron.com

Networking and Mentoring to Build Beneficial Relationships

Networking is one of the most powerful tools for accelerating and sustaining successful careers. Learn to grow your networking skills to influence change and to build collaborative relationships that add value for both your career and for your employer.

Mentoring will always be an integral part of our development. It enables us to gain personal and professional skills to face the challenges ahead.

SUSAN HOWES

C. Susan Howes is Vice President of Engineering at Subsurface Consultants & Associates, LLC (SCA). She has co-authored several papers and articles on uncertainty management, risk management, and talent management for SPE conferences and publications. Howes is chair of the SPE Soft Skills Committee. She holds a BS degree in petroleum engineering from the University of Texas.

PEGGY RIJKEN

Peggy Rijken is the Team Leader for the Productivity Enhancement team in the Reservoir and Production Engineering department at Chevron. Rijken holds a doctorate in petroleum engineering from the University of Texas and a master's in mining and petroleum engineering from Delft University of Technology in The Netherlands. Rijken serves on the SPE Talent Council Committee and is the chair for the ATCE SPE Reservoir engineering committee.

REGISTRATION

speecs.org/events/3371/

EVENT INFO

FRIDAY

10.21.16

9:00 AM -12:30 PM

SPEAKERS

Susan Howes
Vice President of Engineering
Subsurface Consultants &
Associates, LLC (SCA)

Peggy Rijken
Team Leader, Productivity
Enhancement team, Chevron

LOCATION

SPE Houston Training Center
10777 Westheimer Rd, Ste 1075
Houston TX 77042

EVENT CONTACT

Sunil Lakshminarayanan
281-248-1443
sunil_lakshminarayanan@oxy.com

MEMBERS/NON-MEMBERS

\$40/\$55 | \$50/\$55

MIT/STUDENTS

\$15

Volunteering at the Beacon

Please join SPE-GCS Young Professionals in their support of The Beacon, a nonprofit organization helping the poor and homeless populations of the Houston area. Since opening in 2007, the Beacon has grown from serving 80 clients per day to serving 600-800 clients daily in four core programs: The Beacon Day Center, Cathedral Clinic at The Beacon, Brigid's Hope at The Beacon, and Cathedral Justice Project at The Beacon. These four programs come together under one roof to provide meals, showers, laundry service, case management, medical and psychiatric care, pro bono legal services, and pastoral care.

More than 85% of the services of The Beacon are operated by volunteers. On October 2, it will be the SPE-GCS Young Professionals who answer the call to service. Please come and bring friends or family.

Please have a good breakfast to stay energized throughout the event, which goes beyond lunchtime and involves some physical activity.

You may also bring gently used or new items to donate.

EVENT INFO

SUNDAY

10.2.16

10:45 AM - 2:00 PM

LOCATION

The Beacon
John S. Dunn Outreach Center
1212 Prairie St
Houston, TX 77002

EVENT CONTACT

Catalina Leal
832-729-5462
Catalina.leal@bakerhughes.com

Where Are They Now?

PAST SCHOLARSHIP WINNERS

The Scholarship Committee recently conducted a survey of past recipients of the SPE-GCS scholarship. If you're considering donating to the SPE-GCS scholarship fund or hiring an SPE-GCS scholarship winner, you'll be glad to know that the program has enjoyed considerable success over the past six decades. Here's winner Ravi Meka's story:

My favorite memory from college was my first summer internship at Marathon Oil in the Sakhalin II project team. Marathon was leading an international partnership to develop a billion-barrel oil discovery in difficult conditions off the east coast of Russia. To meet the engineering hurdles and timeline, work was being done simultaneously in Houston, Korea, Japan, Russia, and Canada, and vendors from all over the world were involved. That was my first real exposure to both how global the oil and gas business is and how enormous the investments and challenges are in developing large oil and gas fields.

Following graduation, I worked for Marathon in Houston as a reservoir engineer in business development and then moved on to roles in finance and strategic planning. During this time I participated in a number of significant transactions for the company, including its exit from Sakhalin and entry into Equatorial Guinea.

After six years at Marathon, I left to attend business school full time and then spent a number of years in management consulting at McKinsey & Company. This gave me the opportunity to work inside a number of different oil and gas and service companies and learn about the many functions needed for organizations to work well, ranging from corporate strategy to field operations. It also gave me the chance to spend time working in Canada, Indonesia and South Africa, which taught me about how the oil business works in other countries and how to work in other cultures.

I currently work for Murphy Oil in Malaysia in a business development role, which allows me to use both my technical background and business skills. I work with a team of engineers and G&G professionals to identify, evaluate, and secure new exploration and production assets for our businesses in Malaysia, Brunei, Vietnam, and Australia.

I served as SPE Gulf Coast Section Scholarship Chair for a number of years. The SPE-GCS scholarship made possible my education and helped me get my summer internship with Marathon Oil, which then led to a full-time offer. I had the privilege of graduating debt-free courtesy of scholarships and internships, and had a full-time job waiting for me upon graduation. Without SPE's support, I wouldn't be where I am today.

My advice to students is that despite the current price environment, the oil and gas industry is and will continue to be an exciting place to work in the US and around the world.

RAVI MEKA



CAREER OVERVIEW

Business Development Manager at Murphy Oil (Kuala Lumpur, Malaysia)

- Clear Lake High School – 1995
- Texas A&M University – BS in petroleum engineering, 1999
- University of Chicago Booth School of Business – MBA, 2007

SPONSORSHIP

spegcs.org/sponsorship-opportunity/

DONATION INFO

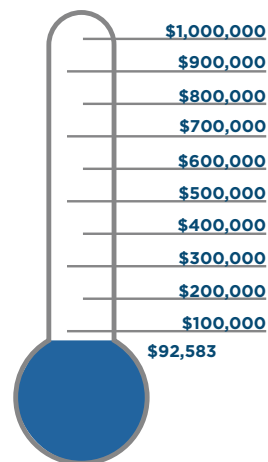
spegcs.org/spegcs-scholarship-fund/

SPE-GCS Scholarship Fund Update

We are excited to announce the status update for our fundraising efforts. As of September 1st, 2016 we have raised **\$92,583** to support our scholarship program! So far, we have received donations from past scholarship recipients who wanted to give back, SPE-GCS Board of Directors, SPE-GCS Study Group and Committee Leaders, SPE-GCS Event Attendees, SPE-GCS Members and Associates, SPEi Leaders, and company donations.

For more information about our scholarship fund, scholarship program or our current donor list, please visit www.spegcs.org/spegcs-scholarship-fund/. You will find testimonials from past scholarship recipients and learn about the impact that SPE-GCS scholarships had on their lives and professional careers. If you have not yet donated, we invite you to visit our website and support our efforts as a member of the SPE-GCS family and fellow industry professional. As a reminder, all donations are tax-deductible. We also encourage you to find out if your company has a matching program that could make your individual donation go even further!

FUND STATUS



Members in Transition Initiative

NINTH SEMINAR SERIES

The SPE Members in Transition Seminar Series features topics of interest to SPE members who are between jobs during the current industry downturn or who are looking for new career opportunities. The agenda for the ninth seminar in the series will include “Assembling Teams, E&P Growth Targets in Today’s Environment & Financing Options,” “Negotiation & Conflict Resolution - Proven Techniques to Achieve a Win/Win Solution,” and “An Entrepreneur’s Guide to Attracting Startup Capital.” There will also be a discussion of resources for SPE members.

Program 1: Assembling Teams, E&P Growth Targets in Today’s Environment & Financing Options

This session will cover topics including types of upstream projects that can get funding during periods of low product prices and how to discover, initiate and accomplish those types of projects. Team building and financing will also be discussed.



BILL FAIRHURST

Bill Fairhurst has been involved in most US resource plays prior to the resource revolution. He is credited with economic discovery of the WolfBone and placing his company in Elm Coulee (Bakken) Field prior to its discovery. He and his teams have discovered dozens of new fields throughout the United States. He has successfully led teams in technical and general management positions and as President/CEO and COO.

Program 2: Negotiation & Conflict Resolution - Proven Techniques to Achieve a Win/Win Solution

This workshop will introduce you to a practical, user-friendly approach to negotiation and conflict resolution known as the mutual gains model. You will learn to prepare for all types of negotiations, identify the issues at the heart of a conflict, seek solutions that benefit all parties in a negotiation, and measure the results of your negotiation.



MARIA FITCH

Maria Fitch specializes in negotiation, conflict resolution, communication, and leadership training at Weatherford. She worked at Cambridge International Consulting, based in Caracas, Venezuela, providing training and negotiation consulting. She has an MA from American University in international peace and conflict resolution and a BA in interdisciplinary studies from University of Iowa.

Program 3: An Entrepreneur’s Guide to Attracting Startup Capital

Tom Powell has led several companies through cyclical market growths and contractions for maximum profitability. He is an innovative investment manager with particular expertise in credit risk analysis, distressed debt recovery, and deal structure. He understands the practical application of money management in response to risk on both Wall Street and Main Street.



TOM POWELL

Tom Powell began his career in 1988 in Silicon Valley at Wells Fargo Bank, where he was named the youngest Vice President in the company’s history. Most recently, Powell founded and successfully grew a diversified private investment company, Resolute Capital Partners (f/k/a ELP Capital), an alternative investment firm specializing in serving middle market borrowers and real estate developers.

EVENT INFO

FRIDAY

10.7.16

10:00 AM – 3:00 PM

SPEAKERS

Bill Fairhurst
President and President/CEO
Riverford Exploration LLC and
PetroTex Energy Partners, LLC

Maria Fitch
Employee Development Advisor
Weatherford

Tom Powell
Senior Managing Partner
Resolute Capital Partners LTD

LOCATION

Houston Technology Center
410 Pierce St
Houston, TX 77002

EVENT CONTACT

Susan Howes
713-553-5020
c.susan.howes@gmail.com

Alex McCoy
713-366-5653
alexander_McCoy@oxy.com

MEMBERS

\$40/\$50 Walk-In

NON-MEMBERS

\$50

STUDENTS/TRANSITIONING

\$15

Registration capped at 70

SPE-GCS 2016 Mergers, Acquisitions & Divestments Symposium

The Business Development Study Group of the SPE Gulf Coast Section invites you to the inaugural SPEGCS Mergers, Acquisitions & Divestments Symposium. The SPEGCS MA&D Symposium is a one-day workshop welcoming young and mid-career professionals to the commercial and transactional side of the oil and gas industry.

The MA&D Symposium will provide an overview from deal conception to deal closing featuring Keynote and Session talks and discussions by A&D experts as well as generous opportunities for networking with about 100 industry peers. The MA&D Symposium will provide detailed insights into the Role, Process, Workflow, Participants and Practices of deal making to give participants the knowledge and network you need to consider opportunities as an A&D professional.

For more information and registration, please visit www.spegcs.org/events/3339/
Limited Seating Notice: Only 90 seats are available. Early registration recommended.



RON HARRELL

The MA&D Symposium is pleased to kick off with a keynote talk by recognized industry expert, Ron Harrell. Mr. Harrell is a Petroleum Engineering graduate of Louisiana Tech University and continues as Chairman Emeritus of Ryder Scott Company, Petroleum Consultants. Ron remains active in the industry as a licensed engineer in three

states and serves on several Management and Advisory Boards including corporations, not-for-profit organizations and three universities. He is a Senior Advisor to RSK(UK) LTD plus The Carlyle Group and Morgan Stanley private equity energy divisions.



PHIL DELOZIER

Phil DeLozier is EVP Business Development (BD) of EnerVest Ltd. He previously served as VP BD of EOG Resources, Manager BD of Tenneco Ventures, VP Land & Acquisitions of McCormick Resources, and in various leadership roles at Tenneco Oil E&P from 1979-1996. He served as Houston Director and Board Member for IPAA from 2007-2013,

and received the IPAA Leadership Award in 2005 for his contributions. Mr. DeLozier serves on the Boards of the Houston Petroleum Club, the World Affairs Council (2007 Chairman), SPE Business Development, and Palmer Drug Abuse Program. He is an active member of AIPN, AAPL, TIPRO, and TX Alliance of Energy Producers. He earned a BA Degree in Communications from Oklahoma State.

AGENDA

- 7:45 AM Registration & Continental Breakfast - Networking
- 8:10 AM Welcome & Overview from Conference Chairman
- 8:20 AM Keynote: Ron Harrell, Chairman Emeritus, Ryder Scott
- 8:50 AM Session I: Strategy, Identification & Screening*
- 10:20 AM Session II: Production, Reserves, Assets & Valuations*
- 11:30 AM Luncheon: MA&D Talk by Phil DeLozier, EVP Business Development, EnerVest Ltd.
- 1:00 PM Session III: Bid Formulation, Review & Approval*
- 2:45 PM Session IV: Due Diligence, Finalizing the Deal & Ethical Considerations*
- 4:15 PM Session wrap-up & MA&D Game: Team-Building Exercise
- 5:00 PM Networking Social Begins
- 5:30 PM Teams Submit Bids for MA&D Game & Winners Announced
- 6:30 PM Adjourn

*Conference sessions will be followed by networking breaks and refreshments

EVENT INFO

THURSDAY

10.20.16

7:45 AM - 6:30 PM

SPEAKERS

Ron Harrell
Chairman Emeritus
Ryder Scott Company

Phil DeLozier
EVP Business Development
EnerVest Ltd

LOCATION

Petroleum Club of Houston
1201 Louisiana St, 35th Floor
Houston, TX 77002

EVENT CONTACT

Curt Killinger
832-467-1785
jkillinger@earthlink.net

MEMBERS

\$200 (After Sept. 15)

NON-MEMBERS

\$250 (After Sept. 15)

YOUNG PROFESSIONALS/MIT

\$50 (Limited to first 20)



SPE-GCS 33rd Annual Tennis Tournament

The 33rd Annual Society of Petroleum Engineers Gulf Coast Section Tennis Tournament will be Thursday, November 3 and Friday, November 4 at Copperfield Racquet & Health Club, 15700 Longenbaugh Dr, Houston.

Proceeds from the tournament benefit the SPE-GCS Scholarship Fund. In combination with other section functions, there have been 33 new scholarships for incoming college freshman studying petroleum engineering, math and sciences, as well as 70 renewed scholarships for sophomores, juniors and seniors to continue their education in petroleum engineering. More than \$3 million in scholarships have been awarded since 1963 through this program.

In 2015, we had a successful tournament with over 70 players participating. Registrations and sponsorships raised \$10,000. After tournament expenses, net proceeds of over \$1,000 were contributed to the SPE-GCS Scholarship Fund.

Sponsors are an essential part of making this event a success. All sponsors will be recognized in the tournament program and on the sponsorship billboard exhibited throughout the tournament. Please see the Sponsor Form for sponsorship levels. In-kind donations for ditty bags and door prizes are also accepted.

The 2016 SPE-GCS Tennis Committee looks forward to seeing everyone for two fun-filled days of tennis!

QUESTIONS

Erin Chang
281-892-4720
erin.chang@bp.com

LOCATION

Copperfield Racquet & Health Club
15700 Longenbaugh Dr
Houston, TX 77095
281-463-2582
copperfieldclub.com

START TIMES

Mixed Doubles
6:00 PM Thursday, November 3

Tournament Doubles
9:00 AM Friday, November 4

DEADLINE

October 28, 2016
Participation is limited!
Entries accepted on a first-come, first-served basis.

Thursday / Friday
November 3 - 4

EVENT INFORMATION

There will be two flighted round robin events:
Mixed Doubles – Thursday evening, November 3
Tournament Doubles – Friday, November 4

The tournament doubles event is open to men and women and is a combined bracket. Partners may be of the same gender or mixed.

The committee will assist players who do not have a partner for any event.

FLIGHTING

Championship – Advanced players
A – Regular and advanced players
B – Intermediate players
C – Non-regular players and beginners

The SPE-GCS Tennis Committee reserves the right to allocate players to a different flight if necessary. Please rank yourself on the honor system.

WHAT TO EXPECT

Lots of tennis, meeting old friends and making new ones. Door prizes, T-shirts, awards, meals and beverages.

Thursday – Light dinner

Friday – Breakfast, lunch and snacks

Hit & Grab – Friday after lunch

Award presentations, door prizes & heavy appetizers – late Friday afternoon ~ 4 PM

RULES OF ENTRY

The event is open to members, nonmembers, guests, and friends of SPE. The only restriction is that tennis professionals are not allowed.

REGISTRATION

Thursday, November 3 – 4:00 – 6:00 PM
Friday, November 4 – 8:30 – 9:00 AM

IMPORTANT NOTICE

All paid participants must wear their name tags during this event to have access to the food and drinks.

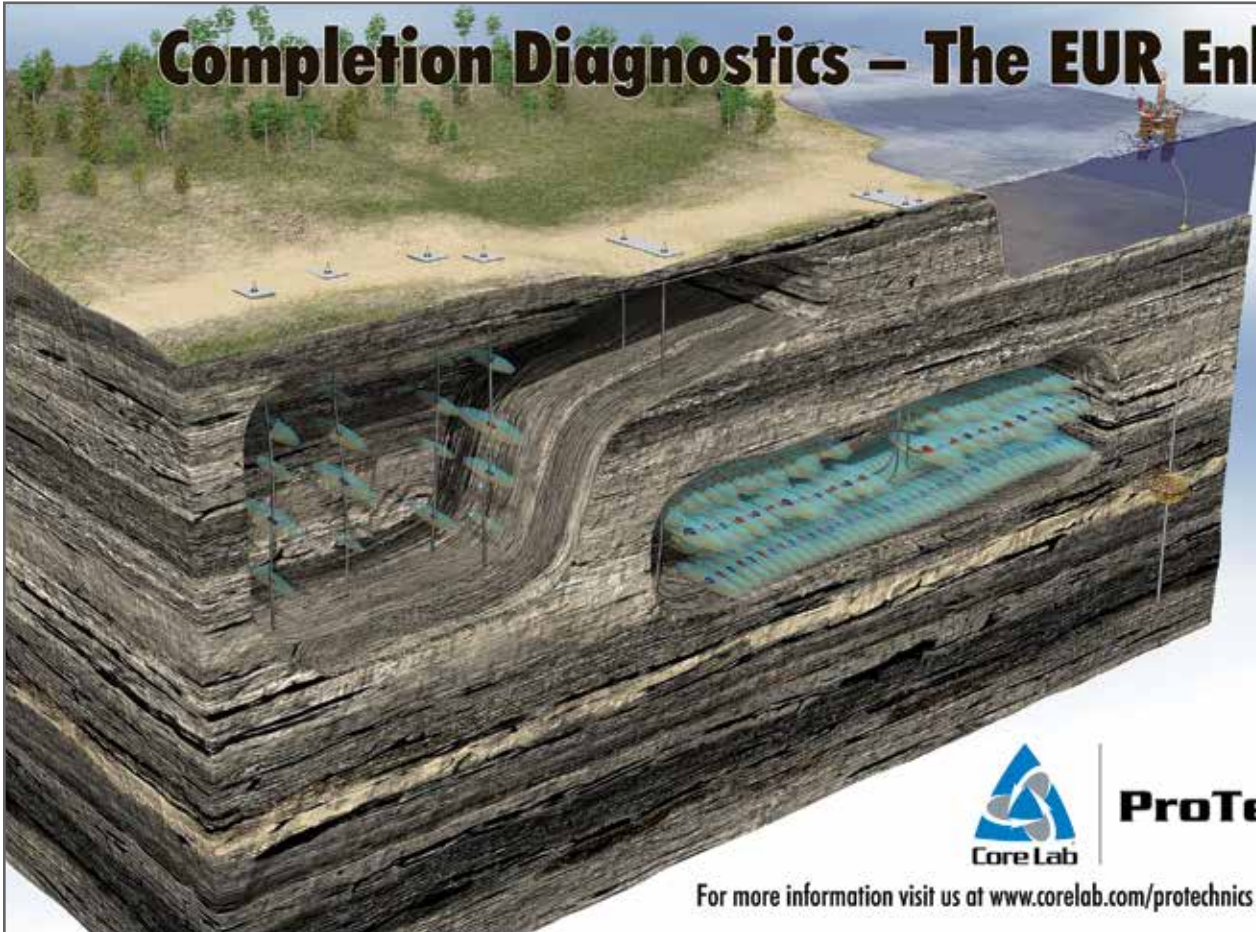
ENTRY FEES

\$125.00 per person – Fee covers tournament and mixed doubles for an individual player.
\$50.00 for those only playing mixed doubles.
\$25.00 – Spouse/guest (not playing)
Fees are due with entry form.

Please visit the link below for registration & sponsorship forms:

<http://www.spegcs.org/events/3357/>

Completion Diagnostics – The EUR Enhancer



ProTechnics

For more information visit us at www.corelab.com/protechnics or call 713-328-2320

SUBJECT MATTER EXPERTS

DESIGN
ANALYSIS
TESTING

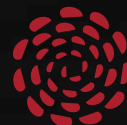
 **STRESS
ENGINEERING
SERVICES INC.**

281.955.2900
www.stress.com

HOUSTON • CINCINNATI • NEW ORLEANS • BATON ROUGE • CALGARY

DELIVERING GLOBAL SOLUTIONS FOR E & P CHALLENGES

- Drilling & Completion
- Well Control
- Reservoir & Production



**SIERRA
HAMILTON**

+1.713.956.0956 • Sierra-Hamilton.com

SPE-GCS STUDENT CHAPTERS

RICE-SPE

Guest Lecture on Schlumberger Oilfield Services

On August 30, Shahid A. Haq from Schlumberger Drilling & Measurement presented a lecture at Rice University. Haq is an active petroleum engineer with 28 years of experience. This talk gave a reservoir engineer's perspective on Schlumberger's relationship with the oil industry, from exploration through production, and integrated pore-to-pipeline solutions for hydrocarbon recovery that optimize reservoir performance.

A Special Invitation: Advisory Board

The committee is launching an advisory board to invite both Rice alumni and industry representatives to give student members advice and help them build personal connections. If you are interested and willing to support us, please contact Pengfei (Patrick) Dong, pdt18@rice.edu.

TAMU-SPE

SPE Mentorship Program

New this year, our Career Development Committee has created a program to jumpstart the careers of younger students: the TAMU-SPE Student Mentorship Program.

This initiative prepares freshmen and sophomores for the recruiting process: resume building, applying for internships, professional marketing, and interviewing. Drawing around 25 oil and gas companies each year, the SPE Career Enhancement Event is the most-attended event hosted by TAMU-SPE, and we want our members to be ready.

Eligible students are paired with a mentor, typically an upperclassman with internship experience, who can provide a perspective on how to be considered as a competitive candidate by recruiters. Mentors have had at least one internship and have worked at a number of companies, including Anadarko, ExxonMobil, and Halliburton.

UH-SPE

Student Chapter Golf Tournament

The University of Houston Society of Petroleum Engineers invites your company to spend a day away from the office and on the fairway at our annual golf tournament and fundraiser on November 18 at BlackHorse Golf Club in Cypress.

The traditional four-player scramble will begin with registration and a meet-and-greet at 10:30 AM, followed by tee-off at noon. Your registration covers beverages throughout the tournament as well as a dinner at 5:00 PM.

The deadline to submit a registration packet for your team is November 1. We look forward to hosting you on November 18 and we thank you for your generosity.

FOR REGISTRATION PACKETS:

Johnny Soudah | 845-264-0153
Vp.external@uhspe.org

The latest stator elastomer technology from PV Fluid Products!



Drive down non-productive time with drilling solutions that work!!

- Minimal chemical swell
- Improved stator life in aggressive applications
- Able to maintain higher differential pressures
- Advanced fit philosophy provides broader temperature range
- Reduced chunking failures
- Higher ROP
- Increased bottom line



PV Fluid Products
The PROGRESSIVE
rotor and stator company



www.pvfluid.com



DIRECTORY

2016-2017 Board of Directors

CHAIR

Deepak Gala, Shell
832-377-2732
deepak.gala@shell.com

VICE CHAIR

Trey Shaffer, Environmental Resource Mgmt.
281-704-3664
trey.shaffer@erm.com

PAST CHAIR / ADVANCEMENT COMMITTEE

Ivor Ellul, CiSK Ventures
713-240-2740
iellul@ciskventures.com

SECRETARY

Marise Mikulis, Baker Hughes
281-723-2901
marise.mikulis@bakerhughes.com

TREASURER

David Flores
281-381-5828
david_p_flores@yahoo.com

VICE TREASURER

Prashant Sainani, ConocoPhillips
214-315-5427
prash87@gmail.com

Board Committee Chairs

CAREER MANAGEMENT, MIT

Sunil Lakshminarayanan, Occidental
713-344-1249
sunil_lakshminarayanan@oxy.com

C. Susan Howes,
Subsurface Consultants & Associates
713-798-2444
c.susan.howes@gmail.com

COMMUNICATIONS

Bryan Marlborough,
Gate Premier Solutions
985-232-0318
bryan.marlborough@gmail.com

COMMUNITY SERVICES

Lisa Li, Williams
281-814-6849
yuli2008@comcast.net

EDUCATION

Simeon Eburi, Chevron
832-854-3134
simeon.eburi@chevron.com

INNOVATE COMMITTEE

John Reichardt, RPS Group
713-595-5121
john.reichardt@rpsgroup.com

MEMBERSHIP

Kris Pritta
713-204-5141
prittakris@gmail.com

PROGRAMS

Fady Chaban, CDEUS
832-387-7249
chabanf@gmail.com

SOCIAL ACTIVITIES

James Jackson
281-376-1993
jjackson5223@gmail.com

YOUNG PROFESSIONALS

Nii Ahele Nunoo, NOV
507-304-5416
nii.nunoo@nov.com

DIRECTORS AT LARGE 2016-2018

Mohammad Tabatabaei, Marathon Oil
713-296-3163
mtabatabaei@marathonoil.com

Robert Estes
713-204-5141
Ra-estes@att.net

Ernie Prochaska, NOV
281-221-1434
ernie.prochaska@nov.com

DIRECTORS AT LARGE 2015-2017

John "J.J." Jackson, Unimin Corp.
832-247-0233
jsjackson@unimin.com

Alvin Barber, Schlumberger
713-689-2725
abarberspe@gmail.com

Mark Fleming, Suntrust Robinson Humphrey
832-603-2305
mark.fleming@suntrust.com

SPE GULF COAST NORTH AMERICA REGIONAL DIRECTOR

J. Roger Hite, Inwood Solutions, LLC
713-385-5343
hite@inwood-solutions.com

Committee Chairs

AUXILIARY

Nancy Giffhorn
rgiffhorn@aol.com

OILFIELD GAMES

Lindsey Ferrell, Frontline Group
spevolunteer@frontline-group.com

AWARDS BANQUET

Jeremy Viscomi,
Petroleum Technology Transfer Council
jviscomi@pttc.org

ESP WORKSHOP

Barry Nicholson, OXY
barry-nicholson@oxy.com

GOLF CO-CHAIR

Robin Smith
robin77095@att.net

INTERNSHIPS

David Li, DSL Ocean Group
dsl6625@yahoo.com

NEWSLETTER

Brittini Romero, Unimin
editor@spegcs.org

PUBLICITY

Pablo Perez, Bardasz
pablo.perez@bardasz.com

SCHOLARSHIP

Jennifer Pinnick, Chevron
gcssholarship1@gmail.com

SPONSORSHIP

David Pantoja, Citi A&D Group
david.pantoja@citi.com

SPORTING CLAYS

Paul Conover, NOV
paul.conover@nov.com

TENNIS

Erin Chang, BP
erin.chang@bp.com

WEB TECHNOLOGY

Lindsey Newsome,
Newsome Marketing Group
lindseynewsome@gmail.com

Study Group Chairs

BUSINESS DEVELOPMENT

David Pantoja, Citi A&D Group
david.pantoja@citi.com

COMPLETIONS & PRODUCTION

Jonathan Godwin
jongodwin@hotmail.com

DRILLING

Ernie Prochaska, NOV DDS
ernie.prochaska@nov.com

GENERAL MEETING

Robert Saucedo, ASHMIN
rsaucedo@ashmin.com

HSSE AND SOCIAL RESPONSIBILITY

Trey Shaffer, Environmental Resources
Management (ERM)
trey.shaffer@erm.com

INTERNATIONAL

Mary Beth Snodgrass, Local Content LLC
mbs@localcontent.com

NORTHSIDE

Sumitra Mukhophadhyay, Superior Energy
sumitra.mukhophadhyay@
superiorenergy.com

PERMIAN BASIN

Amy Timmons
atimmons1114@gmail.com

PETRO-TECH

Jessica Morgan, Blackstone Minerals
jmorgan@blackstoneminerals.com

PROJECTS, FACILITIES, CONSTRUCTION

Chris Shaw, Shell
c.shaw@shell.com

RESEARCH & DEVELOPMENT

Kitty Harvey, Cameron
kitty.harvey@c-a-m.com

RESERVOIR

Freddy Alvarado, Chevron
freddy.alvarado@chevron.com

WATER & WASTE MANAGEMENT

Barbara Denson, Weston Solutions
barbara.denson@WestonSolutions.com

WESTSIDE

Steve Loving, Core Laboratories, LP
stephen.loving@corelab.com

CONNECT

INFORMATION

EDITOR

Brittni Romero | editor@spegcs.org

ADVERTISING COORDINATOR

Brendan Marlborough
advertising@spegcs.org

BOARD LIAISON

Bryan Marlborough
bryan.marlborough@gmail.com

LAYOUT & DESIGN

DesignGood | designgoodstudio.com
kristie@designgood.com

GULF COAST SECTION ADMINISTRATOR

Taylor Wright | spe-gcs@spe.org

HOURS & LOCATION

10777 Westheimer Rd, Ste 1075
Houston, TX 77042
713-779-9595 | F 713-779-4216
Monday - Friday 8:30 a.m. to 5:00 p.m.

For comments, contributions, or delivery
problems, contact editor@spegcs.org.

October 2016

CALENDAR

SUNDAY	MONDAY	TUESDAY	WEDNESDAY	THURSDAY	FRIDAY	SATURDAY
						1
Young Professionals		Northside		Research & Development	Members in Transition (MIT)	
2	3	4	5	6	7	8
		HSSE-SR	Drilling	General Meeting	Auxiliary Cont. Ed/Career Mgmt	
9	10	11	12	13	14	15
		Reservoir Permian Basin	Westside	Business Development Board of Directors	Cont. Ed/Career Mgmt	Young Professionals
16	17	18	19	20	21	22
		International	Business Development	PF&C		
23/30	24/31	25	26	27	28	29



Your Clear Solution for Deepwater Completions


TETRA CS Neptune™ is a high-density (up to a density of 15.4 ppg, 1.85 g/ml), solids-free fluid that provides a viable alternative to zinc bromide and cesium formate brines.

- ▶ Zinc-free with global environmental acceptability
- ▶ Does not require zero-discharge system of work
- ▶ Formulated from renewable products, ensuring continuity of supply
- ▶ Can be reclaimed for reuse, using standard technology
- ▶ Requires no special mixing, handling, or storage equipment at rigsite
- ▶ Can be formulated as a low-solids, reservoir drill-in fluid

TETRA CS Neptune fluid is another innovative solution from TETRA Technologies, Inc.

tetratec.com



DEDICATED TO THE CØRE 

© 2016 TETRA Technologies, Inc. All Rights Reserved. TETRA and the TETRA logo are registered trademarks, and TETRA CS Neptune is a trademark of TETRA Technologies, Inc.



SOCIETY OF PETROLEUM ENGINEERS GULF COAST SECTION

10777 Westheimer Road
Suite 1075
Houston, TX 77042

NON-PROFIT
ORGANIZATION
U.S. POSTAGE
PAID
PERMIT NO. 6476
HOUSTON, TX

YOUR AD COULD BE HERE!

Advertise with us & reach over
16,000 oil and gas industry
influencers every month!

Buy ads that really produce

SPE-GCS hits your target
audience

Flexible ad sizes in full-color,
glossy publication

**SPECIAL PRICING &
PROMOTIONAL RATES
AVAILABLE FOR A LIMITED
TIME, CONTACT US NOW!**

ADVERTISING COORDINATOR

Brendan Marlborough
advertising@spegcs.org

ARE YOU AN ADVERTISING SALES PROFESSIONAL LOOKING FOR YOU NEXT MOVE? BECOME A PART OF A TEAM THAT INCLUDES PROFESSIONALS FROM THE TOP PETROLEUM INDUSTRIES IN THE GULF COAST REGION.

Society of Petroleum
Engineers is currently hiring
for an **ADVERTISING SALES
COORDINATOR** to join the
Connect newsletter team.
This is a great opportunity
to build relationships while
earning a generous
commission based income.

Primary focus will be to
prospect and secure ad
sales for the SPE-GCS
Connect monthly
newsletter.

FOR MORE INFO CONTACT

Communications Chair
Bryan Marlborough
bryanmarlborough@gmail.com

