



Gulf Coast Section

JUNE  
2014

# CONNECT

SPE GULF COAST SECTION NEWSLETTER

## Water-Related Issues in Drilling and Production of Gas and Oil, 2014

RESEARCH & DEVELOPMENT P. 13

### Human Error

HSSE-SSR P. 15

TECHNOLOGY DEVELOPMENTS  
IN WATER MANAGEMENT  
FOR UNCONVENTIONAL  
GAS RESOURCES

PROJECTS FACILITIES & CONSTRUCTION P. 17

SCHOLARSHIP  
AND AWARD  
WINNERS 2014

EDUCATION P. 7-11

ROUGHNECK CAMP

YOUNG PROFESSIONALS P. 25



# CHAIR'S CORNER

MIKE STRATHMAN  
*2013-2014 SPE-GCS Chair*

Summer is closing in, so enjoy the warmer Houston weather. We continue to host events throughout the summer to share technical knowledge and help students get excited about Science, Technology, Engineering and Math (STEM). One such event planned for June is the Emerging Engineers Conference. This popular annual event is organized by the SPE-GCS Young Professionals (YP). Nii Ahele Nunoo is the conference chair for 2014. The theme of the 2014 conference is “Unconventional and Deepwater Development: Getting in on the Technology.” It is planned for June 26, 2014. This event is designed for those new to the industry to help them understand the technologies and provide them opportunities to attend career planning discussions. Please visit the Calendar of Events on [www.spegcs.org](http://www.spegcs.org) and register to attend. Do not be left behind.

## THANK YOU

Volunteering is critical to the Section’s success. Last month we had the annual Awards Banquet where volunteers were recognized for extraordinary contributions. We appreciate each one of them and we appreciate the many volunteers who were not formally recognized. There are limited resources so we try to find the most deserving members, which is a challenge. The Board appreciates recommendations, so over the next year, please advise any board member of someone who makes an extra effort in a Committee, Study Group or by sharing their knowledge in the spirit of SPE. That will help ensure we recognize the right people each year. The Section is large but with knowledge sharing and networking, it is manageable.

Two people support our Section every day and deserve a special mention: Kathy MacLennan, our Section Administrator, and Sharon Harris. These two executives keep us focused, answer questions and make sure things run smoothly for all the Study Groups and Committees. When you are in the office or have a phone or email interaction with them, be sure to thank them for all they do. Thank you, Kathy and Sharon, on behalf of myself and the Board.

## EMPHASIS ON HEALTH, SAFETY & ENVIRONMENT

One topic of considerable importance in our industry is Health, Safety, Social Responsibility and the Environment (HSSE). Globally, the SPE has made this an area of focus with numerous conferences. SPE will conduct the Americas HSE Conference 2015 in Denver on March 16-18. It should be a very informative event. You can sign up on the SPE website.

Within the Gulf Coast Section (GCS), the Health Safety & Environment Study Group provides our emphasis on this important topic. They hosted the first ever Movie Night, putting an HSE spin on fracturing

technology. On June 17, 2014, they will have a luncheon discussion on “Human Error.” Help our industry be a healthier and safer place to work by attending these events and sharing information about these important topics.

## THOUGHT YOU SHOULD KNOW

Sharing technical knowledge is a key SPE objective. As a member you have several ways to participate in that objective.

- Professional Networks - members aligned by common professional interests who come together to share information and ideas, discuss topics of interest and answer questions posed by other community members.
- Technical Sections – members join together to share ideas, promote competence, and develop projects related to their technical interest. Technical Sections tend to be more task-oriented than discussion-oriented.
- Technical Communities – members aligned by common technical interests, who meet in an online community to share information and ideas, discuss topics of interest, share documents, and answer questions posed by other community members.

SPE membership has its benefits; connecting to professionals in your area of interest is an important one. SPE membership is global, which means you can reach world-class experts anywhere in the world. SPE Connect is the vehicle for much of the sharing. To register visit [SPE.org/network](http://SPE.org/network) to learn about these networking groups and sign up for SPE Connect.

Thank you for being involved with the section’s activities – it makes the GCS a better organization for all members. I personally welcome your comments and ideas to help the SPE Gulf Coast Section serve you and your career better. Please contact me at [mike-strathman@att.net](mailto:mike-strathman@att.net).

# FEATURES

June 2014

## STUDY GROUPS

### RESEARCH & DEVELOPMENT

6/5/14

*Water-Related Issues in Drilling and Production of Gas and Oil, 2014*

P. 13

### HSSE-SSR

6/17/14

*Human Error*

P. 15

### PROJECTS FACILITIES & CONSTRUCTION

6/25/2014

*Technology Developments in Water Management for Unconventional Gas Resources*

P. 17

### PROJECTS FACILITIES & CONSTRUCTION SUMMER LECTURE SERIES

*What Have We Learned About Host Selection in Deepwater GoM After 20 Years of Begin Being Off the Shelf*

P. 19

## COMMITTEES

### YOUNG PROFESSIONALS

6/12/14

*Hess: Leading Bakken Unconventionals Through Everyday Innovation*

P. 21

### CONTINUING EDUCATION

*Negotiation Skills & Conflict Resolution Soft Skills Workshop*

6/18/14

*Horizontal Drilling Workshop*

7/18/14

P. 27

### YP EMERGING ENGINEERS CONFERENCE

*& NETWORKING EVENT*

*Unconventional and Deepwater Development: Getting in on the Technology*

6/26/14

P. 23

### ROUGHNECK CAMP

7/17/14

P. 25

### AUXILIARY

P. 27



P. 7-11

### EDUCATION

*Scholarship and Award Winners 2014*

## MORE

### EVENT RECAP

*Community Service: The Future of Petroleum*

### OIL AND GAS INVESTOR'S

*"20 UNDER 40"*

*Deepak Gala*

P. 29

## IN EVERY ISSUE

### SPE-GCS MEMBERSHIP REPORT

### VOLUNTEER SPOTLIGHT

*Nii Ahele Nunoo*

P. 5

### SPE-GCS DIRECTORY

P. 30-31

THU  
June  
12

7:30 AM TO 10:30 AM

## BOARD OF DIRECTORS MEETING

### LOCATION

*SPE Houston Office  
10777 Westheimer Rd.  
Suite 1075  
Houston, TX 77042*

### EVENT CONTACT

*Sharon Harris  
713-457-6821 EXT. 821  
713-779-4216 FAX  
sharris@spe.org*

# Trust your paddle?



## one reliable solution. Entero<sup>®</sup> MOSAIC<sup>™</sup>

With over ten years of continuous progress and innovation for corporate reserves and evaluations, Mosaic has the product stability and client responsiveness that E&P companies have come to expect. Discover what it's like to have a system and team you can depend on to achieve your end goal.

- Better Productivity
- Higher Efficiency
- Faster Speed
- Trusted Information

Expect More. Accomplish More. Learn More at [www.entero.com/mosaic](http://www.entero.com/mosaic)

entero<sup>®</sup>  
energy software

# SPE-GCS MEMBERSHIP REPORT

April 2014

APRIL 2014  
Total: 13,536  
YP: 2,753

MARCH 2014  
Total: 13,239  
YP: 2,619

	APRIL		MARCH	
<i>SPE-GCS Members</i>	Total	YP	Total	YP
<i>New Members</i>	50	N/A	3	1
<i>Reinstated</i>	N/A	N/A	N/A	N/A
<i>Transferred to Section</i>	9	1	N/A	N/A
<i>Unpaid</i>	3,656	1,332	4,353	1,519

	APRIL		MARCH	
<i>Student Members</i>	Paid	Unpaid	Paid	Unpaid
<i>Texas A&amp;M</i>	683	245	623	289
<i>Rice</i>	34	26	25	31
<i>HCC</i>	43	23	40	28
<i>UH</i>	275	197	241	219
<i>Total</i>	1,035	491	929	567

	APRIL	MARCH
<i>Total Paid/Unpaid</i>	14,571 4,147	14,168 4,920
<i>% Paid</i>	77.8%	74.2%



## VOLUNTEER SPOTLIGHT

*Nii Ahele Nunoo*

YP EMERGING ENGINEERS CONFERENCE CHAIR,  
SPE-GCS CONTINUING EDUCATION CHAIR

This month the SPE Gulf Coast Section wishes to recognize Nii Ahele Nunoo. Nii Ahele serves as Chair for the SPE-GCS Continuing Education Committee as well as Chair for the SPE-GCS Young Professionals Emerging Engineers Conference.

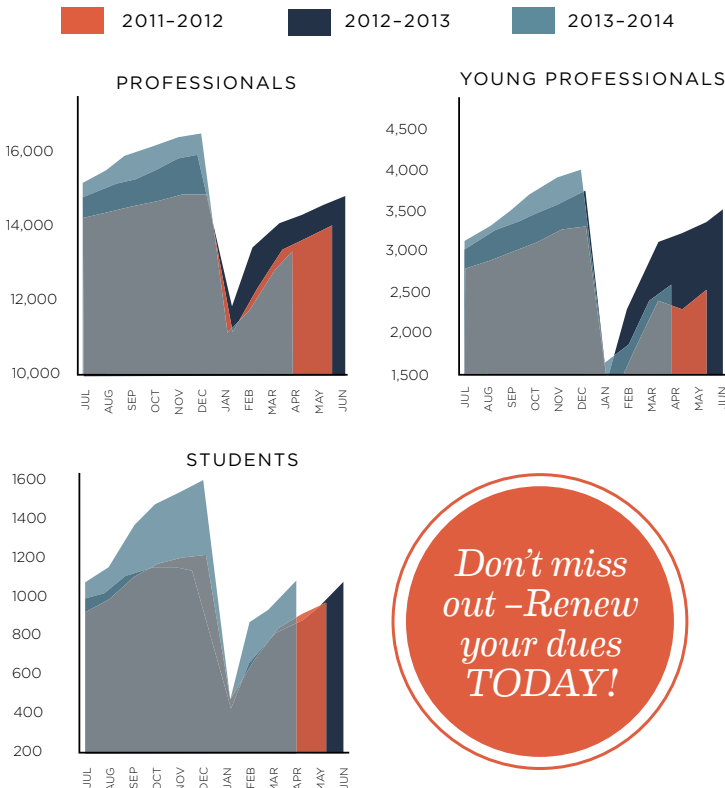
In his role as Chair of the SPE-GCS Young Professional Emerging Engineers Conference, Nii Ahele is organizing the largest Young Professional event of the year. The conference exposes young professionals to new and emerging industry technologies as well as career development discussions that help build a solid foundation or a promising career in the energy sector. The theme for this year's event is: "Unconventional and Deepwater Development: Getting in on the Technology".

Nii Ahele analyzed the SPE-GCS Survey in regards to continuing education and is organizing seminars and workshops to meet the needs of survey responders. He is currently organizing a Negotiation Workshop this June that will focus on helping professionals in the oil and gas industry with their negotiation skills. He is also organizing a Horizontal Drilling seminar that will take place in July.

Nii Ahele is passionate about giving back to his community; in the fall of 2013, Nii Ahele was a part of the SPE-GCS Young Professionals team that helped build bikes with the Elves and More Foundation in Houston for the Christmas season. He also volunteered with the SPE Young Professionals team to renovate a house in Houston through the Rebuilding Together Houston Program.

Professionally, Nii Ahele is an Electrical Design Engineer with the Electronic Design Group (EDG) at National OilWell Varco. EDG is responsible for designing and qualifying electronics on projects for high shock, high pressure, and high temperature downhole tool applications that record drilling dynamics information.

In his free time, Nii Ahele organizes science fairs for middle school students in low income areas in Houston. He recently participated in his first BP MS 150 bike ride from Houston to Austin and met his fundraising target for the National Multiple Sclerosis Society.



**LUFKIN***Expect More*

*More* **SYSTEMS**  
*More* **SERVICES**  
*More* **LOCATIONS**



Pump jacks with legendary quality and reliability have been the reputation of Lufkin for more than 100 years. In that same tradition, Lufkin now offers more artificial lift systems, more support services and more locations to serve operators around the world. These highly engineered solutions, supported by our experienced staff, deliver optimum production from your oil and gas wells.

Now, more systems and services to meet your requirements:

- **Automation**
- **Beam Pumping Units**
- **Hydraulic Pumping Units**
- **Reciprocating Pumps**
- **Progressing Cavity Pumps**
- **Production Optimization**
- **Well Monitoring**
- **Secure Scada**
- **Plunger Lift**
- **Gas Lift**
- **Completion Products**
- **Maintenance & Repair**
- **Training**

*The Energy Flows Through Us®*  
 LUFKIN.COM

**TAM SOLUTIONS****PROVEN, PREDICTABLE, PACKER PERFORMANCE****TAM PosiFrac™ Systems:**

With PosiFrac™ you have an all-inclusive, multi-stage system for open-hole hydraulic fracture applications. And you have the experts to run it from service centers in your region. You'll get your completion on depth, on time, with the best swellable packers available. And that's as complete as it gets.



**TAM INTERNATIONAL**  
 Inflatable and Swellable Packers

45 YEARS OF SUCCESS

WELL INTERVENTION

DRILLING &amp; COMPLETIONS

UNCONVENTIONAL RESOURCES

RESERVOIR OPTIMIZATION

[www.tamintl.com](http://www.tamintl.com)

MULTI-STAGE COMPLETIONS



Not all ball-drop systems are created equal.

Our QA/QC process provides 100% traceability with 2D barcodes ensuring that every system is tracked from raw steel to on-site delivery. Contact us today and let us help you maximize your assets.



DO IT ONCE. DO IT RIGHT.

**Packers Plus®**  
[www.packersplus.com](http://www.packersplus.com)

This year, SPE-GCS has awarded 25 new scholarships to graduating high school seniors who will begin their first college semester in fall 2014. These young men and women will embark on a journey to receive a degree in engineering or geoscience. All of the students receiving this scholarship have gone through a challenging selection process that analyzes their skills in math and science, their leadership, and their volunteer and extracurricular activities.

### HIGH SCHOOL AUXILIARY SCHOLARSHIPS

The Houston SPE Auxiliary, which dates back to 1963 when its predecessor, the WWAIME Group, awarded the first student loans, teamed up with SPE in 1978 to begin providing scholarships to deserving students in the Houston area. Over the past 45 years, more than 500 deserving high school students throughout the Gulf Coast area have received the Houston SPE Auxiliary's "Scholarships for Tomorrow" scholarships. This year, four new SPE Auxiliary scholarships have been awarded to the following students:

COLIN ABERNATHY  
Texas City HS

CONNOR SAUER  
Cypress Creek HS

RUSS JAMES  
Cinco Ranch HS

CUTAIA NICHOLAS  
Conroe HS

### HIGH SCHOOL SPE-GCS SCHOLARSHIPS

*SPE-GCS scholarship funds are awarded annually to outstanding local high-school seniors who plan to pursue a career in the petroleum industry and will major in engineering or science. Each scholarship provides \$3,000 per year for new recipients as well as renewals. The majority of funds for the program are raised through the individual volunteer efforts of the 16,000+ members of the SPE-GCS and the Houston SPE Auxiliary in the Greater Houston area. Within SPE-GCS, funds are raised through sporting clays, golf and tennis tournaments, workshops, continuing education programs, seminars, symposia and study groups. The Houston SPE Auxiliary derives funds for its scholarship program by holding fundraising events for the activities of special interest groups of the organization or through memorial contributions and by working as volunteers in the OTC Nomad International Room and as support staff in the SPE office.*

*While the main purpose of SPE-GCS is to disseminate technical information for engineers involved in our industry, the second objective is to encourage students to develop their abilities in mathematics, science and engineering. The scholarship program helps meet that objective. It has been a key program for SPE-GCS since it was founded by the Auxiliary many years ago. This year, 21 deserving high school students will be receiving an SPE-GCS Scholarship.*

ALLEN THAI  
Dulles HS

ANDREW BROWN  
Tomball Memorial HS

ANN GRAFF  
The Woodlands HS

BLAKE HAYES  
Cy-Fair HS

GRAHAM TAYLOR  
Memorial HS

GUNALAN KARUN  
James E. Taylor HS

HALEY COLE  
Cinco Ranch HS

HENRY HIGGINSON  
The Woodlands HS

JACOB BEHLING  
Northland Christian School

JAYANT AVASHTI  
Kingwood HS

JEREMY MARTENS  
Cy-Fair HS

JORGE GARCIA RIVERA  
Victory Early College HS

KARLO REMIGIO  
Bellaire HS

LAUREN WHITNEY  
William B. Travis HS

LIAM HOSKINS TOBIN  
The Woodlands HS

MADISON JACKSON  
Westside HS

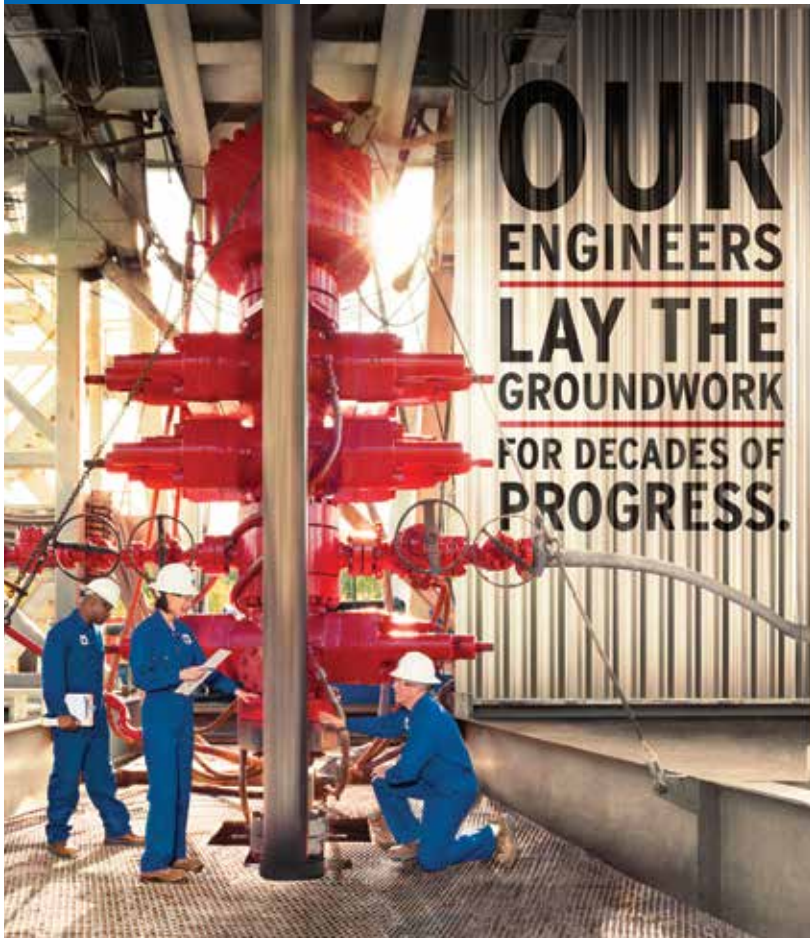
MIRANDA JONES  
St. Michael Homeschool

REED JONES  
Clements HS

RITA SONKA  
The Woodlands HS

SILLIN (LEO) HUANG  
Lawrence E. Elkins HS

TRANG LUU  
Westfield HS



**OUR  
ENGINEERS  
LAY THE  
GROUNDWORK  
FOR DECADES OF  
PROGRESS.**

At Chevron, you'll join a team with the technology to take on big challenges, the integrity to do it responsibly, and the drive to keep the world moving forward. If you're up to the job, visit [chevron.com/careers](http://chevron.com/careers)

Chevron is seeking experienced petroleum engineers for production, reservoir, reservoir simulation, drilling and completions positions.

**JOIN THE  
CHALLENGE.**



Human Energy<sup>®</sup>

An equal opportunity employer that values diversity and fosters a culture of inclusion. CHEVRON, the CHEVRON Hallmark and HUMAN ENERGY are registered trademarks of Chevron Intellectual Property LLC. © 2013 Chevron U.S.A. Inc. All rights reserved.

# We're GROWING...

Introducing our Total Managed Displacement Services (TMDS™):

Our proprietary suite of wellbore cleanout tools, non-pollutant displacement chemicals, surface pit cleanout and fluids filtration services, and direct job validation.

**Delivering the ultimate clean wellbore for maximizing completion success.**

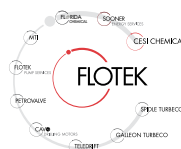


[www.abrado-intl.com](http://www.abrado-intl.com)  
Email us at: [info@abrado-intl.com](mailto:info@abrado-intl.com)

## ORANGE IS THE NEW GREEN



Flotek's citrus-based, environmentally friendly **CnF<sup>®</sup>** fracturing additives will revolutionize the way the world thinks about fracturing and will improve your production.



For more information contact  
[cesimkt@flotekind.com](mailto:cesimkt@flotekind.com)  
or call  
832-308-CESI (2374)



## Community in Schools Houston (CISH) Scholarship

*This year, we also recognize the winners of the Community in Schools Houston (CISH) Scholarship. The Society of Petroleum Engineers is a long-time partner of CISH Inc. and has successfully hosted this Job Training Program for CISH high school students for many years in order to prepare them for successful employment. This partnership creates educational experiences that will develop and enhance transferable life skills, as well as create exposure to promising career choices.*

LESLEY SAUCEDO  
Milby High School

TIARA FLOWERS  
Davis High School

PATRICIA MENDOZA  
Milby High School

LILIANA GONZALEZ  
Milby High School

CRISTAL HERNANDEZ  
Southwest High School

JACQUELINE LAURENZANA  
Milby High School

BRITTANY SMITH  
Reagan High School

JULIO MENDOZA  
Milby High School

## EXEMPLARY VOLUNTEER AWARD

DAVID PANTOJA MANZANO  
Credit Agricole

HUZAIFAH RAZALI  
NOV

TONY FERNANDEZ  
Noble Energy

SKIP DAVIS  
Technology Intermediaries

JAMES RODGERSON  
BP

NAVAL GOEL

DAVID EPPLIN  
Baker Hughes

SUMITRA MUKHOPADHYAY  
Superior Energy

TANHEE GALINDO  
BSAF

SUSAN HOWES  
Chevron

JAMES PAPPAS  
RPSEA

ELIZABETH DESTEPHENS  
Oxy

CHRIS SHAW  
Shell

CHET TEAFORD  
HDR

ANGELO PINHEIRO  
Marathon

## LEGION OF HONOR

*The SPE Legion of Honor recognizes individuals who have maintained their membership in SPE for 50 years. This list of inductees includes not only captains of industry and pioneers in exploration, production and petroleum technology, but also numerous members who have received SPE recognition before. The list includes SPE Directors, SPE Distinguished Members, and holders of countless SPE officer positions over the past 50 years. The people on this list have written hundreds of technical papers and articles, compiled several textbooks, and hold dozens of technical patents. The list contains many industry leaders of the past and present that guided the full spectrum of companies – from small independent firms to major Fortune 500 corporations. The importance of their accomplishments and dedication over the last 50 years cannot be overstated.*

MR. WILLIAM E. BABYAK  
MR. ALLEN C. BARRON  
MR. ROBERT F. BOGGUS  
MR. WILLIAM R. BRINKOETER  
MR. PAUL E. CAMERON JR.  
MR. MARSHALL P. CLOYD  
MR. VIRGIL R. COLE JR.  
MR. THEODORE C. DOERR  
MR. CLIFFORD W. DYE  
MR. MUDAFAR M. EL SALEH  
MR. HUGH G. EVANS

MR. JOSEF A. GALOOSTIAN  
DR. HAROLD E. GILLILAND  
MR. GEORGE A. HELLAND JR.  
MR. FERDINANDO JUON  
MR. DONALD E. LANMAN  
MR. WILLIE L. LYON  
MR. JACK MARSHALL  
MR. RICHARD M. MCKINLEY  
MR. DAN MENDELL III  
MR. F. TIM PEASE  
MR. ESPY P. PRICE JR.  
MR. JIM D. REATHERFORD

MR. JON E. RISEDEN  
MR. ROBERT W. SEARS  
MR. R. W. SITTON  
MR. GROVER D. SMITH  
MR. VOLLIE W. SPONSELLER  
MR. JOHN F. TRECKMAN  
MR. MARVIN L. TRICE JR.  
MR. DONALD E. VANDENBERG  
MR. RUSSELL VANBIBER JR.  
MR. GORDON L. WRIGHT  
MR. MILTON L. GILLESPIE



**When time is money,  
Wellsite Geoscience is  
money well spent.**

Whether you're exploring a basin, producing a well or completing a shale play, time is money. That's why Weatherford Laboratories brings a suite of formation evaluation technologies right to the wellsite. Utilizing mud gas and cuttings, these technologies provide detailed data on gas composition, organic richness, mineralogy and chemostratigraphy in near real time. As a result, operators now have an invaluable tool to assist with sweet spot identification, wellbore positioning, completion design and hydraulic fracturing. We call it Science At the Wellsite. You'll call it money well spent.

**SCIENCE AT THE WELLSITE™**  
www.weatherfordlabs.com

Formation Evaluation | Well Construction | Completion | Production



©2013 Weatherford. All rights reserved.



**PROCESS SOLUTIONS**  
MAXIMIZING PERFORMANCE THROUGH  
**OPERATIONAL EXCELLENCE**

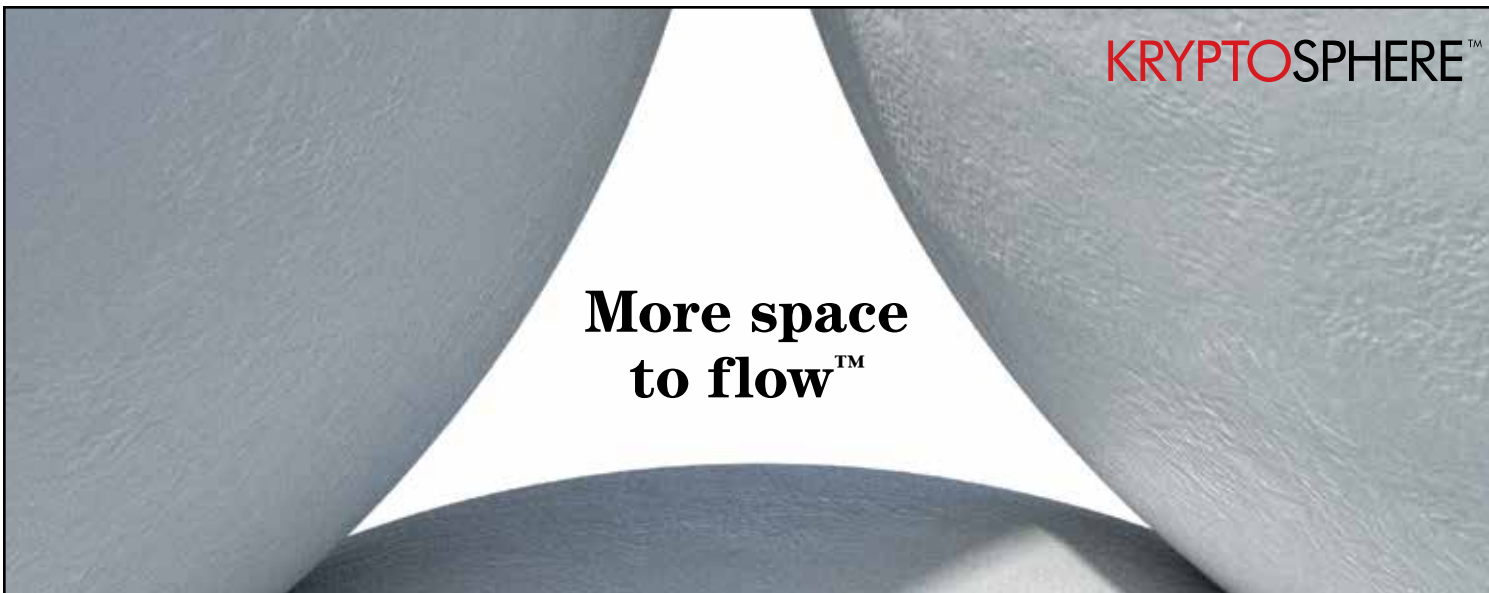
- OPERATIONS ASSURANCE
- SUBSEA PRODUCTION REALIZATION
- FLOW ASSURANCE
- SEPARATION SYSTEMS
- GAS TREATMENT & TRANSPORT
- PRODUCED WATER MANAGEMENT
- SAND & SOLIDS MANAGEMENT
- CONTAMINANTS MANAGEMENT
- CHEMICAL MANAGEMENT
- PROCESS/PRODUCTION OPTIMIZATION
- PROCESS TROUBLESHOOTING
- OPERATIONS PERFORMANCE STRATEGY [OPS]
- SYSTEMS AWARENESS TECHNICAL TRAINING

**WE ARE DEDICATED TO  
DELIVERING STRATEGIC  
VALUE FOR OUR CLIENTS.**

Our highly skilled technical team understand the changing and challenging needs of the oil and gas industry and the importance of objective, innovative and cost effective solutions.

contact@maxoilsolutions.com • www.maxoilsolutions.com

ABERDEEN • LONDON • HOUSTON • STAVANGER • KUALA LUMPUR • PERTH



**KRYPTOSPHERE™**

**More space  
to flow™**

**KRYPTOSPHERE** ultra-conductive, ultra-high strength proppant technology

**KRYPTOSPHERE** provides twice the baseline conductivity of high-strength proppants at 20,000 psi closure stress. Precision-engineered, mono-sized proppant spheres with exceptional strength, durability and smoothness create more space to flow within your fractures. By maintaining increased conductivity for the life of your deepwater well **KRYPTOSPHERE** delivers higher production, increased EUR and greater ROI.

carboceramics.com/kryptosphere



**Production. Enhanced.**

2014

2014 SPE-GCS  
REGIONAL & SECTION

# WINNERS

2014 SPE-GCS  
REGIONAL & SECTION

## SPE-GCS SECTION SERVICE AWARD WINNERS

GURJETT JAUHAR  
Baker Hughes

ERNIE PROCHASKA  
NOV

SUNIL LAKSHMINARAYANAN  
Weatherford

BUDDY WOODROOF  
Core Labs

PAVITRA TIMBALIA  
ExxonMobil

SATHISH KULATHU  
Sanchez O&G

JOHN JACKSON  
Unimin Energy

REGINA ECO  
Miller and Lents LTD

SUBASH KANNAN  
Anadarko

HIEP VU  
Kosmos Energy

MARK PEAVY  
Enhanced Oil Resources Inc.

## OUTSTANDING COMMITTEE

SPORTING CLAYS  
Paul Conover  
Chair

## OUTSTANDING STUDY GROUP

RESERVOIR  
Sunil Lakshminarayanan  
Chair

## SPE HOUSTON YOUNG ENGINEER OF THE YEAR

SIMEON EBURI  
Chevron

## REGIONAL SPE AWARDS

COMPLETIONS OPTIMIZATION  
& TECHNOLOGY AWARD  
Maricel Marquez, Chevron

DISTINGUISHED ACHIEVEMENT AWARD  
FOR PETROLEUM ENGINEERING FACULTY  
Thomas Holley, University of Houston

DRILLING ENGINEERING AWARD  
Roger Goobie, BP

FORMATION EVALUATION AWARD  
William Almon, Chevron

HEALTH, SAFETY, SECURITY,  
ENVIRONMENT,  
& SOCIAL RESPONSIBILITY AWARD  
Charles Williams, Center for Offshore Safety

MANAGEMENT  
& INFORMATION AWARD  
Mario Coll, Anadarko

PROJECTS, FACILITIES  
& CONSTRUCTION AWARD  
Harold Skeels, FMC Technologies

RESERVOIR DESCRIPTION  
& DYNAMICS AWARD  
Delores Hinkle

SERVICE AWARD  
Stephen Baumgartner, Marathon

Fady Chaban, ConocoPhillips

Sathish Kulathu, ConocoPhillips

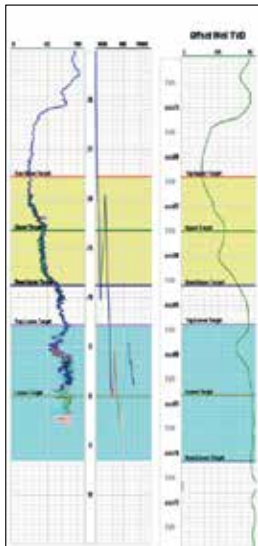
Alex McCoy, Oxy

Dan Moore, Warrior Energy

YOUNG MEMBER OUTSTANDING  
SERVICE AWARD

Antonio Fernandez, Noble Energy

Sudiptya Banerjee, Baker Hughes



**Geosteering Services**

Highly qualified personnel with 20+ years DD & LWD experience

24/7 Real-time monitoring or reports from LAS files

Proprietary software

**Geosteering Software**

TST interpretation for GR only measurements

Image displays / interpretation of azimuthal GR, resistivity or density measurements

Resistivity modelling / interpretation for LWD propagation resistivity

Software sales, training and technical support

[info@geosteering.com](mailto:info@geosteering.com)

Call 281 573 0500

# Reserves for Unconventional Reservoirs

July 14-15, 2014 | Houston, TX

## Are You Handling an Unconventional Reservoir? Learn from the Best!

This course details the methods available to forecast production and estimate reserves in unconventional (shale, hydraulically fractured, low to ultra-low permeability) reservoirs. Learn the strengths and weaknesses of commonly used methods.

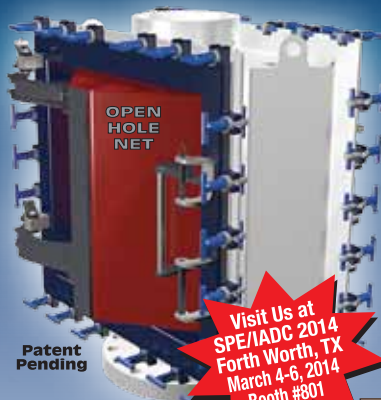
For more information visit:  
[www.petroleumetc.com](http://www.petroleumetc.com)  
 or contact us via email at:  
[moreinfo@fracschool.com](mailto:moreinfo@fracschool.com)  
 or call 832.833.2569

**You drop it in the wellbore, we catch it!**

Introducing ...

# OPEN HOLE NET™

**Protects the wellbore from metal dropped into and coming out of the wellbore!**



Patent Pending

- **Installs over any API standard size annular preventer.**
- **Roughnecks rig it up; no operator needed.**
- **No power source needed.**
- **Operates 24/7/365. Never rests.**
- **Complete stainless steel construction.**
- **M.A.D.E.™ (Made, Assembled, Designed, Engineered) in USA.**

Visit Us at SPE/IADC 2014 Forth Worth, TX March 4-6, 2014 Booth #801



Premier Magnetic Applications in Drilling Completion and Production Operations  
[sales@5doilfieldmagnetics.com](mailto:sales@5doilfieldmagnetics.com) • 337.466.7400



[www.5doilfieldmagnetics.com](http://www.5doilfieldmagnetics.com)



Reach for the SUMMIT in ESP solutions

EASTERN AREA 918.392.7820  
 SOUTHERN AREA 432.563.7040  
 WESTERN AREA 307.764.6346

[www.summitesp.com](http://www.summitesp.com)



**The Independent Leader in Real-Time Solutions**

**Solutions for Drilling, Petrophysics, and Geological Analysis**

- Real-Time & Unstructured Data Management Services
- Drilling & Data Management Consulting
- Active Drilling Surveillance



[www.petrolink.com](http://www.petrolink.com)

# Water-Related Issues in Drilling and Production of Gas and Oil, 2014

It takes around 120,000 bbl of water to hydraulically fracture a well, and the well will return between 10% to 20% of the water, but in a greatly degraded form. On average, a conventional producing well produces from 7 to 10 barrels of water for each barrel of oil; this water tends to be corrosive, scaling, and loaded with “chemicals of concern” from simple salt to polynuclear aromatic hydrocarbons. The challenges are several-fold. First, there is a great need for more useable water for fracing, or to be able to tolerate lower quality water. Second, as the water is produced there are numerous engineering issues that must be managed related to keeping the well bore functioning. Finally, the produced water must be disposed of or reclaimed for use. Often the temperatures, pressures and salt content with the produced waters exceed our technical ability to model or treat. It is imperative that water-handling technology be improved, or the industry will continue to lose revenue and stop production prematurely.

## Dr. Mason Tomson

Professor Mason Tomson holds a BS degree in Chemistry and Mathematics, a Ph.D. in Chemistry and is a licensed professional engineer (P.E.). He is a Professor of Civil and Environmental Engineering at Rice University in Houston, TX. Prof. Mason Tomson has co-authored over 250 articles in high impact journals, including *Science*, *Journal of the American Chemical Society*, *Environmental Science and Technology*, *Oil and Gas Journal*, and numerous SPE journals; he holds four patents, and has authored two books. While at Rice, he has directed research grants totaling over twenty million dollars. He is presently involved in numerous research projects from DOE, Advanced Energy Consortium, Brine Chemistry Consortium of 26 oil and gas production & service companies, and shale gas water treatment. Prof. Tomson is also leading a joint program between Rice University and Nankai University (Tianjin, China) on sustainable environmental development and several energy/environment related projects. In collaboration with Prof. Colvin, his work on arsenic removal was named one of the top five nanotech breakthroughs of 2006 by *Forbes* magazine and was featured in *The New York Times*.

## Event Info

### SPEAKER

*Dr. Mason Tomson*  
Professor of Civil and  
Environmental Engineering  
Rice University

### LOCATION

Norris Conference Center  
Westchase  
9990 Richmond Avenue  
Suite 102  
Houston TX 77042

### EVENT CONTACT

*Skip Davis*  
281-359-8556  
[skdavis@technologyintermediaries.com](mailto:skdavis@technologyintermediaries.com)

### MEMBERS

\$35

### NON-MEMBERS

\$40

## Rose & Associates

Courses Consulting Software  
Improving E & P Effectiveness

**Unconventional Resource  
Valuation Course** (3 to 5 days)

**UCRA Software**  
To model, value and risk  
drilling in resource plays

[lisaward@roseassoc.com](mailto:lisaward@roseassoc.com)



## Broaden your expertise.

NExT and Petrel are marks of Schlumberger. © 2014 Schlumberger. All rights reserved. 10/14/14



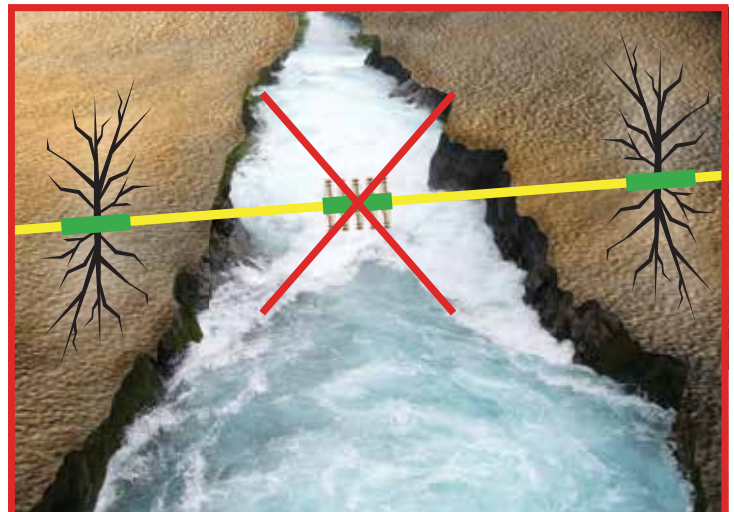
NExT oil and gas training and career development instructs more than 10,000 E&P professionals every year.

With hands-on mentoring and coaching, at a Schlumberger training facility or on the job, NExT training can help you expand your technical expertise.

To view our full list of courses, and to enroll, visit [NExTtraining.com](http://NExTtraining.com)

### Featured Geology Field Trip

Practical Fracture Analysis of Clastic Reservoirs with Petrel  
June 15–20, 2014  
Casper, Wyoming, USA



## Don't send your frac down a river.

Let Geotrace show you how to save **money** and **water** on your frac programs by detecting subtle faults and fracture systems before drilling.



**Geotrace**  
TECHNOLOGIES

[www.geotrace.com](http://www.geotrace.com)

rock @glidem | xochu\_river @bigat01 | merquef@com. ozofes @Wendy Kaveney | Dreamstime.com

## PREMIUM CONNECTIONS

Meeting your exacting requirements.

SealLock® | WedgeLock®  
TKC™ | TS™  
connection technology



[www.huntingplc.com](http://www.huntingplc.com)

© 2013 Hunting

### Reaching Deeper

With the largest fleet of deep, high-pressure coiled tubing, coupled with basin-specific expertise

### Going Further

To find solutions to our customers' wellsite challenges, safely and efficiently

### That's the IPS Advantage



Integrated Production Services

[www.ipsadvantage.com](http://www.ipsadvantage.com)



## Deepwater Drilling Training

**John Shaughnessy** – SPE member – presents learnings from 36 years of experience: equipment, procedures, potential problems. Classes -

Deepwater Drilling: 5 days

Accelerated Deepwater Drilling: 2 Days

HTHP Drilling: 3 Days

Basic Drilling: 1 Day

Customized and In-House Classes Available

Class details at [shaughnessydrillingtraining.com](http://shaughnessydrillingtraining.com)

# Human Error

The human element is the most flexible and adaptable part of a company's management system, but it is also the most vulnerable to influences that can adversely affect its performance. With the majority of accidents resulting from less than optimum human performance, there has been a tendency to label them as human error. However, the term "human error" is of little help in safety management. How do you fix human error? Although it may indicate where in the system the breakdown occurred, it provides no guidance as to why it occurred. An error attributed to humans may have been design-induced, or stimulated by inadequate equipment or training, badly designed procedures, or a poor layout of checklists or manuals. Further, the term "human error" in accident reports allows concealment of the underlying factors that must be brought to the forefront if accidents are to be prevented. The workplace needs an understanding of the factors and conditions affecting human performance.

For a company to shift its philosophy from a reactive to a preventative system, it needs a better understanding of human error. Incidents/accidents can't be labeled simply as human error. The safety system must understand the root of human behavior and the errors in the workplace.

The presentation will cover the levels of performance behaviors and review a case study from a US airline accident. The presentation will also discuss a number of studies that draw upon a growing understanding of how skilled experts are driven by moment-to-moment task demands, the availability of information, and social/organizational factors, and ultimately they continue the plan even when the environment alerted them that another course of action should have been sought.

## Andrew Dingee

Andrew Dingee chairs the SPE Human Factors Technical Section and currently works as the Global Wells Learning Advisor for BP. He worked extensively in aviation safety after leaving active duty from the Marine Corps where he was an aviation instructor. He transitioned to the oil and gas industry in 2010, bringing lessons learned from the recent revolution in aviation safety to the oil field environment.

Dingee has worked with companies developing SEMS programs and doing SEMS audits. He joined BP in 2012, where he currently works on creating a learning system that transfers safety lessons learned back to the field. He is the author of *Hanger Talk*, which focuses on the human error element of incidents.

## Event Info

### SPEAKER

*Andrew Dingee*  
Global Wells Learning Advisor  
BP

### LOCATION

*Petroleum Club*  
800 Bell Street, 43rd floor  
Houston, TX 77002

### EVENT CONTACT

*Trey Shaffer*  
281-600-1016  
trey.shaffer@erm.com

### MEMBERS

\$40

### NON-MEMBERS

\$50

### STUDENTS

\$10

# PHDWIN™

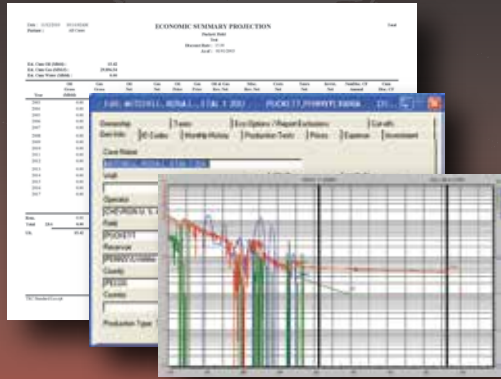
Integrated Economics & Decline Curve Analysis

NOW EVEN MORE POWERFUL WITH

# PHDRMS™

Reserves Management System

The *complete solution* for evaluating, managing, and reporting reserves and performance data.



Schedule an **online** presentation  
**TODAY!**

TRC Consultants, LC    888-248-8062    [www.phdwin.com](http://www.phdwin.com)

## CORROSION-RESISTANT COMPOSITE PIPELINE SOLUTIONS



Flexpipe Systems' composite linepipe products are flexible, reliable and customizable. We are the answer to your next pipeline project.



[flexpipesystems.com](http://flexpipesystems.com)

## Slider

Automated Directional Drilling

### IMPROVE YOUR HORIZONTALS



- ON-BOTTOM TOOL FACE ORIENTATION
- INCREASED MOTOR LIFE
- INCREASED ROP & HORIZONTAL REACH CAPABILITY
- ELIMINATES ORIENTATION TIME LOSSES

[slb.com/Slider](http://slb.com/Slider)

# ELY

Global  
Hydraulic  
Fracturing  
Expertise

281-530-4010  
[www.elyfrac.com](http://www.elyfrac.com)



# Technology Developments in Water Management for Unconventional Gas Resources

Shale and tight gas developments are highly water intensive processes with a typical well requiring several million gallons of water to drill and fracture. During gas/condensate production, a major portion of this water along with contaminants returns back to the surface as flow-back water in the first few weeks of operation, and the remaining amount of water is produced through the lifetime of the well as produced water. For either re-use or disposal, the water produced from unconventional hydrocarbon wells needs treatment as it may contain residual fracturing fluid chemicals, suspended solids, high salinity, hardness, and hydrocarbons that could form emulsions, and other constituents. The variability in produced-water volume, high salinity and residual polymer, among other issues, present various technical challenges in water treatment.

Shell uses an integrated subsurface/completions engineering/surface engineering approach to select and mature water treatment technologies and establish best water management practices focused on minimizing safety risks to protect human health and the environment, reduce water footprint, and optimize water-related costs. A brief introduction to the integrated process will be provided and results of recent technology development and testing focused on optimizing water reuse and recycling. This presentation addresses Shell's current water management solutions for unconventional plays development.

## Sunil Ashtekar

Sunil Ashtekar is a Production Chemist in the Deepwater R&D team at Shell Technology Center Houston and currently supports the water management R&D program for Unconventional Gas and Tight Oil Technology Platform. He has obtained his Masters and a PhD degree from the Chemistry department, IIT-Bombay in 1996. After his post-doctoral research at the department of chemical engineering at Cambridge University, he joined General Electric and worked in various fields of plastics, advanced materials and nanocomposites. In 2007, he joined Shell and has led various experimental programs on product and process chemistry, and was instrumental in developing sustainable and value-added sulfur products. He has also contributed in filing 16 patents.

## Event Info

### SPEAKER

*Sunil Ashtekar*  
Production Chemist  
Shell

### LOCATION

*Technip USA*  
11700 Katy Freeway  
Houston, TX 77079

### EVENT CONTACT

*Brad Nelson*  
832-230-8246  
[bnelson@maxoilsolutions.com](mailto:bnelson@maxoilsolutions.com)

### MEMBERS

\$35

### NON-MEMBERS

\$40



# Completion

SYSTEMS, FLUIDS & TOOLS



## Specialized tools assure a debris-free completion

Engineered to enhance completion efficiency, M-I SWACO pre-completion wellbore tools provide single-pass cleanups that focus on drilling mud residue removal, wellbore debris elimination, formation damage minimization and NPT reduction.

In addition to specialized tools, we offer an integrated suite of sophisticated planning software and effective displacement fluids that assure a clean, debris-free well during the critical transition of well construction from the drilling to completion phases.

[www.miswaco.com/completions](http://www.miswaco.com/completions)



# PRODUCTIONER

**USED BY EVERYONE,  
FROM THE FIELD PUMPER  
ALL THE WAY UP TO MANAGEMENT**

What our customers are saying:  
"Productioner is a great data repository and analysis tool. Data entered in the field is immediately available to corporate office."

**FEATURES**

- FIELD DATA CAPTURE
- ALLOCATIONS
- REPORTS & GRAPHS
- CUSTOMIZABLE TEMPLATES
- FULLY MANAGED SERVICE

Mi4 Corporation  
Ph: (713) 401-9584  
sales@productioner.com  
www.productioner.com

**24/7 SUPPORT HOTLINE (866) 421-6665**

## The SimpleStart™ toe sleeve

Simply pressure up and test the casing; the toe sleeve opens automatically for initial injection.

[ncsfrac.com](http://ncsfrac.com)

Leave nothing behind.

© 2013 NCS Energy Services LLC. Multistage Unlimited, SimpleStart, and "Leave nothing behind" are trademarks of NCS Energy Services LLC.

281.955.2900  
[www.stress.com](http://www.stress.com)

## Providing Engineered Solutions

**STRESS ENGINEERING SERVICES INC.**  
DESIGN • ANALYSIS • TESTING

# What Have We Learned About Host Selection in Deepwater GoM After 20 Years of Begin Being Off the Shelf

The Project, Facilities and Construction Study Group is pleased to announce our Summer Series for 2014. The series of lectures will focus on “Floating Production Systems” and the challenges our industry faces when selecting and designing the optimum field development plan for deepwater assets.

As offshore discoveries go deeper and into new environments, producing oil and gas from these resources becomes a more complex challenge. Deepwater production requires a large portfolio of projects to be developed with Floating Production Systems (FPS). Many factors must be considered that influence the design, including the payload and performance requirements, the met-ocean and geotechnical environments, construction methodology and available facilities, installation methodology and available equipment, and schedule requirements.

A series of six sessions have been selected to provide the attendee with an understanding of the factors and challenges that influence the selection and design of FPS. In the sessions, a summary of the main characteristics and design considerations will be provided, including pros and cons. In addition, selected recent innovations and future challenges will be discussed. In many cases, lessons learned from recent projects regarding design, installation and operation will be addressed.

These sessions will be presented by industry-recognized experts from the oil company, contractor, and engineering communities. These are perfect opportunities for either an introduction to FPS for the engineer just starting in the industry, a refresher for the more seasoned individual, or just a great networking opportunity for those involved in this arena.

Each session includes a 1-hour presentation followed by a 30-minute Q&A session. We fully expect a large turnout, so please book early and attempt to attend all six sessions. The PF&C Study group appreciates the support of our SPE-GCS members and we look forward to seeing you there.

## DATES

Session I	FPS Selection	July 2	4:30 pm – 6:00 pm
Session II	Monohulls	July 9	4:30 pm – 6:00 pm
Session III	TLPs	July 16	4:30 pm – 6:00 pm
Session IV	Spars	July 23	4:30 pm – 6:00 pm
Session V	Semi-Submersibles	July 30	4:30 pm – 6:00 pm
Session VI	Shallow Water Floater	August 6	4:30 pm – 6:00 pm

## Event Info

### LOCATION

Wood Group Mustang  
Opus Building Events Room  
17420 Katy Freeway  
Houston, TX 77094

### EVENT CONTACT

Brad Nelson  
832-230-8246  
bnelson@maxoilsolutions.com

### MEMBERS

\$35 per lecture

### NON-MEMBERS

\$45 per lecture

### STUDENTS

\$15 per lecture

# PetroSkills®

June and July sessions in Houston



### Introductory & Multi-Discipline

- Basic Drilling, Completion & Wellbore Operations, 2-6 June
- Evaluating and Developing Shale Reservoirs, 5-13 June
- Exploration & Production Process Basics, 16-27 June
- Overview of the Petroleum Industry, 10-11 June

### Production & Completions

- Acidizing Applications in Sandstone and Carbonates, 15-23 May
- Beam Pumps, 12-16 May
- Completions and Workovers, 23-27 June
- Formation Damage: Causes, Prevention, and Remediation, 15-23 May (in conjunction)
- Gas Well Dehydration, 16-20 June
- Performance Analysis, Prediction, and Optimization Using NODAL™ Analysis - PD2, 2-6 June
- Production Operations I – PO1, 2-13 June
- Progressing Cavity Pumps, 23-27 June
- Surface Production Operations, 15-23 May
- Unconventional Resources Completion and Stimulation, 15-23 May

### Reservoir Engineering

- Applied Reservoir Engineering – RE, 9-20 June
- Basic Reservoir Engineering, 5-9 May, 7-11 July
- Decline Curve Analysis and Diagnostic Methods for Performance Forecasting, 19-20 May
- Enhanced Oil Recovery with Gas Injection, 21-25 July
- Reservoir Simulation Strategies, 2-6 June

### Well Construction/Drilling

- Basic Drilling Technology, 15-23 May, 21-25 July
- Drill String Design and Optimization, 14-18 July
- Drilling Fluids Technology, 16-20 June
- Solids Control Systems, 5-13 June
- Stuck Pipe Prevention – Train Wreck Avoidance™ - SPP, 23-25 June
- Well Design and Engineering, 2-13 June

For details on these or our other 250 sessions in the Gulf Coast, contact Patty Davis, (832) 426-1203 or [patty.davis@petroskills.com](mailto:patty.davis@petroskills.com), or see details and full selection at [www.petroskills.com](http://www.petroskills.com)

Did you get your copy of our 2014 Training Guide? If not, sign up for free at [www.petroskills.com/contact](http://www.petroskills.com/contact)



Trying to make sense of the U.S. Water Market?

## Water Market Opportunities Report

- Play-by-play market sizes
- Regulatory trends
- Analysis on major players
- Insight into business models

- water acquisition
- water transfer
- water storage
- water treatment
- water hauling
- water disposal



[ihs.com](http://ihs.com)



[cap-res.com](http://cap-res.com)

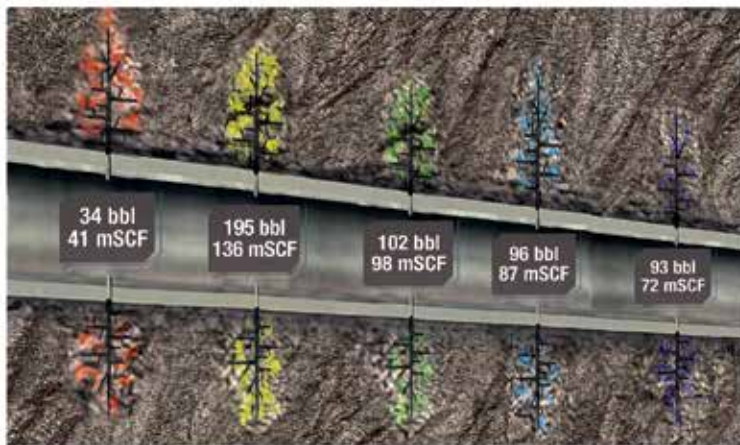
Maria Bertram, IHS  
1-781-301-9438

[maria.bertram@ihs.com](mailto:maria.bertram@ihs.com)

# Measure Hydrocarbon Stage Production ...No tools, coiled tubing or wireline



Providing Insight Onsite



## Tracer technology to evaluate stimulation and well design:

- ♦ Measure actual oil and gas production per stage
- ♦ Results equivalent to 30+ days of production logging
- ♦ Diagnose fracture communications to offset wellbores
- ♦ Confirm toe flow to verify release of all plugs

Knowing what's going on at the bottom keeps you on top.

To learn more call or email:  
Tel: 281 291 7769  
Email: [reservoir@tracerco.com](mailto:reservoir@tracerco.com)  
[www.tracerco.com/reservoir-characterisation](http://www.tracerco.com/reservoir-characterisation)



# HESS: LEADING BAKKEN UNCONVENTIONALS THROUGH EVERYDAY INNOVATION

## GERBERT SCHOONMAN

Gerbert Schoonman is Vice President, Onshore – Bakken Asset, for Hess Corporation, a leading global independent energy company engaged in the exploration and production of crude oil and natural gas. With nearly 25 years in the industry, Schoonman's broad experience worldwide includes positions in petroleum engineering, production operations, environment, health and safety (EHS), project management and asset management.

Schoonman's responsibility for the Bakken asset encompasses more than 550,000 acres in North Dakota and is one of the company's top primary growth investments with a \$2.2 billion capital budget in 2014. As a leading energy company in North Dakota, Hess is the second largest producer of oil from the Bakken. Under his leadership, the asset brought 168 wells online in 2013, raising the total to 722 operated wells in the region with plans to bring an additional 225 new operated wells online this year. Schoonman joined Hess in 2011 as Vice President, Production – Asia Pacific, with responsibility for production and subsurface operations for all of Hess' producing assets in Asia Pacific before taking his current position in 2012.

Schoonman previously spent about 20 years with Shell. He served as the East Asset Manager for Brunei Shell Petroleum responsible for growing the asset's production by bringing on-stream a series of new developments and pursuing operational excellence. He also held various leadership roles with Shell EP Europe, including Asset Development Manager for the company's North Sea assets, Head of HSE Service Delivery for EP Europe and Offshore Installation Manager at Dunlin and Cormorant.

Schoonman, who earned his master's degree in Mechanical Engineering from Delft University of Technology, began his career as a graduate engineer with Nederlandse Aardolie Maatschappij (NAM), a Shell-Exxon Mobil joint venture.

## Event Info

### SPEAKER

*Gerbert Schoonman*  
Vice President,  
Onshore – Bakken Asset  
Hess Corporation

### LOCATION

39th Floor of the Wedge Tower  
1415 Louisiana St  
Houston, TX 77002

### EVENT CONTACT

*Dozie Ekweribe*  
405-326-6310  
Dozie@chevron.com

### MEMBERS

\$20

### NON-MEMBERS

\$25

### WALK-INS

\$35

VIBRATION TECHNOLOGY  
LEADING THE INDUSTRY IN STUCK PIPE RECOVERY  
INNOVATIVE TECHNOLOGY FOR REMOVING STUCK TUBULARS

+ WORKOVER  
+ COMPLETIONS  
+ DRILLING



Vibration Technology

[www.layne.com](http://www.layne.com)

MUDPRO  
Drilling Mud Reporting Software



Pegasus Vertex, Inc.

713-981-5558 | [sales@pvsoftware.com](mailto:sales@pvsoftware.com) | [www.pvsoftware.com](http://www.pvsoftware.com)

# Directionally challenged?

If your directional drilling program is more challenging than you expected, maybe you need a new directional driller. Maybe you need Ryan Directional Services, Inc.

Ryan has experience in virtually every important oil and gas shale play. We know the potential roadblocks and how to address them before they cost you money. And that takes drilling to a new level of efficiency.

Call Ryan at 281.443.1414 and see how our directional drilling program will change your experience from challenging to rewarding.

[www.nabors.com](http://www.nabors.com)



Why can Weatherford deliver more real time data at the wellsite than any other mudlogging company?

Tim has cabin fever.



Our Global Operations Manager for Surface Logging Systems, Tim, is all smiles these days. That's because he and his team recently designed a new state-of-the-art mudlogging cabin. The spacious interior makes room for more laboratory services at the wellsite. Now exploration companies have access to more data in real time, so they can make better decisions faster. It's one more way Weatherford Mudlogging is committed to Excellence from the Ground Up.

**EXCELLENCE  
FROM THE  
GROUND UP™**

**SURFACE LOGGING SYSTEMS**  
[www.weatherford.com/surfacelogging](http://www.weatherford.com/surfacelogging)  
[mudlogging.services@weatherford.com](mailto:mudlogging.services@weatherford.com)



**Studio**  
E&P KNOWLEDGE  
ENVIRONMENT

## Make expertise more productive

Expert knowledge matters most when you are making critical decisions. The Studio® E&P knowledge environment lets experts capture and share knowledge in the context of the reservoir challenge at hand—enabling every team member to make the best possible decisions. Microsoft technologies combine with on-demand access to the information you need—so experts can contribute when you need them most.

Find out more at:  
[software.slb.com/Studio](http://software.slb.com/Studio)



®Mark of Schlumberger. © 2014 Schlumberger. 14-1S-0141  
Other company, product, and service names are the properties of their respective owners.

**PATENTED proNova™ by TDE**

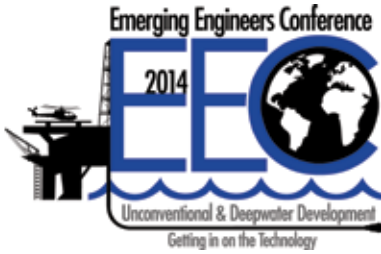
## DRILLING PERFORMANCE

**CREW PERFORMANCE MEASUREMENTS**

**AUTOMATIC OPERATIONS DETECTION**

**INVISIBLE LOST TIME DETECTION**

**281.755.7595**  
[www.pronova-tde.com](http://www.pronova-tde.com)



“Do you have less than 10 years of industry experience?”  
 “Do you consider yourself an innovative young professional?”  
 “Are you eager to make an impact in your company? In our industry?”

If you answered yes to any of these questions, then you don't want to miss the 2014 Emerging Engineers Conference. Register today and secure your spot!

**KEYNOTE SPEAKER:**

Al J Hirshberg, Executive Vice President, Technologies and Projects, ConocoPhillips Company

**PRESENTATION TOPICS:**

Drilling Automation, Fracking Technology, Smart Completions, Predictive Analytics in O&G Operations, Digital Oilfield, New Technologies in Reservoir Modeling, How Innovative Oil and Gas Companies Are Using Big Data to Outmaneuver Their Competition

**TWO PANEL DISCUSSIONS ON:**

Innovative Emerging Technologies in the Oil and Gas Industry and Engineering Career Certifications, Continuing Education, and the Road to a Technical or Management Career Path – Options of Today

**TWO SOCIAL NETWORKING EVENTS:**

With paid registration - Innovation is all about making unexpected connections.

**POSTER COMPETITION:**

Prizes: 1st-\$1000; 2nd-\$500; 3rd-\$250 - Don't miss your chance to display your work and win \$1000!

THU  
 June 26

7:00 AM TO 5:00 PM

**Event Info**

**LOCATION**

*Weatherford International  
 2000 St. James Place  
 Houston, Texas 77056*

**EVENT CONTACT**

*Nii Ahele Nunoo  
 507-304 5416  
 nii.nunoo@nov.com*

**MEMBERS**

*\$150*

**NON-MEMBERS**

*\$175  
 Day of Conference  
 Registration \$200 On Site*

**REGISTRATION**

*www.spegcs.org/EEC2014*

**POST EEC SOCIAL-  
 COUNTRY WESTERN  
 NETWORKING EVENT**

Please join the SPE GCS Young Professional group for a Country Western Networking Event at Wild West Houston! The event will be held directly following the Emerging Engineers Conference on June 26th from 7-9pm. Food and beverages will be provided, thanks to our sponsor, Baker Hughes. The event is open to all young professionals, including those who do not attend EEC. See the event page on the SPE GCS calendar for more information about the conference and social event.

THU  
 June 26

7:00 PM TO 9:00 PM

**Event Info**

**LOCATION**

*Wild West Houston  
 6101 Richmond Ave  
 Houston, TX 77057*

**EVENT CONTACT**

*Brittany Niles  
 281-782-8194  
 Brittany.niles@shell.com*

Measured Solutions from  
The Completion Diagnostics Company

# Fracture Performance?

With ProTechnics' combined spectral and production imaging services you can directly measure:

- Fracture Effectiveness
- Wellbore Connectivity
- Production Allocation
- Water Production Problems
- Stage Production Contribution
- After-Frac Production Baseline

COMPLETION<sup>™</sup>  
PROFILER



**ProTechnics**  
COMPLETION DIAGNOSTICS  
a division of Core Laboratories



Learn more at [www.corelab.com/protechnics](http://www.corelab.com/protechnics) or call us at 713-328-2320

## 2013 PROFESSIONAL ENGINEERING EXAM RESULTS FOR PETROLEUM ENGINEERING

First Timers 75%  
Second+ Timers 53%  
National Pass Rate 70% Est

Look next month for Winrock PE Course Results

PE Exam Application Deadline Date: July 1, 2014  
Next Petroleum PE Exam Date: October 24, 2014

P: 405-822-6761 | E: [bingwines@cox.net](mailto:bingwines@cox.net)  
[winrockengineeringinc.com](http://winrockengineeringinc.com)



CRITICAL  
WELL ENGINEERING  
CONSULTING SERVICES

VIKING'S TEAM OF HIGHLY TRAINED  
PETROLEUM PROFESSIONALS  
LEND THEIR EXPERIENCE TO  
CREATIVE WELL DESIGNS.

WE CAN HELP PLAN AND  
EXECUTE YOUR TOUGH WELLS.

- PETROLEUM CONSULTING
- (HPHT) WELL DESIGN
- APB ANALYSIS
- PROJECT MANAGEMENT
- FAILURE ANALYSIS
- TRAINING

VISIT OUR WEBSITE: [WWW.VIKINGENG.NET](http://WWW.VIKINGENG.NET)  
OR CALL: (281) 870-8455 IN HOUSTON



**ULTERRA™**

When Every Run Counts™



[www.ulterra.com](http://www.ulterra.com)

+1 817 293 7555

### Technical Documentation Development and Management Consulting



*Documentation help = more  
available engineering time*

#### Technical Writing

- + Develop content
- + Multiple authors – consistent voice
- + Formatting, grammar & readability
- + Develop / edit graphics

#### Management Consulting

- + Documentation & project management
- + Procedures, processes & workflow
- + RFPs, RFQs & contract management

- Quick turnaround
- On-demand resource
- Turnkey publication

**ZAETRIC®**

[www.zaetric.com](http://www.zaetric.com)



PPI  
Technology  
Services LLC

Your Total  
Project Management  
& Well Site Solution

[ppitech.net](http://ppitech.net)

(713) 464-2200

## Integrated Energy Services, Inc.

**Robert Barba**  
Petrophysicist

Log Analysis  
Completion Optimization

500 N. Capital of TX Hwy  
Building 4-150  
Austin, TX 78746  
C: (713) 823-8602  
F: (713) 583-9400  
[RBarba75@gmail.com](mailto:RBarba75@gmail.com)

[www.integrated-energy-services.com](http://www.integrated-energy-services.com)



# Roughneck Camp

*The Oil and Gas Supply Chain: From the Ground to the Pump*

Roughneck Camp (RNC) is an annual one-day conference focused on welcoming students, interns, technical professionals and new members to the oil and gas industry. The conference will include career development sessions, presentations by industry Leaders and a technical & panel discussion. There will also be many networking opportunities throughout the event.

THU  
July 17

8:00 AM TO 5:00 PM

TIME	TOPIC	SPEAKER /TITLE
7:00 AM	Check In	
8:00 AM	Opening Remarks	Jeffrey Rhea, Angola Reservoir Engineer, ExxonMobil
8:10 AM	On Exploration	Sid Jones, New Ventures Team Lead, Chevron
8:50 AM	On the Development of Oil and Gas Projects	TBD, ExxonMobil Development Co.
9:30 AM	On Oil and Gas Production	Bill Henry, VP, Shell International Exploration and Production
10:10 AM	Ice Breakers 1	
10:40 AM	On the Transportation of Oil and Gas	Amethyst Cavallaro, Corporate Strategic Development, Williams
11:20 AM	On Liquefied Natural Gas	Chris Caswell, Director, LNG and FLNG, KBR
12:00 PM	Lunch	
12:40 PM	Open Panel Discussion on a Career in the Oil and Gas Industry	Greg Andrews, Shell Oil Co. Amy Sullivan, DW Proj Delivery Support Mgr, Shell
1:20 PM	On Refining	Mike Brown, VP Technology, Independence Oilfield Chemicals
2:00 PM	On Petrochemicals	Julio Perez, Fixed Equipment Maintenance Supervisor, Exxon Mobil Chemical Co.
2:40 PM	Ice Breakers 2	
3:10 PM	On the Marketing of Petroleum Products	Michael Andrew, US Marketing, Phillips66
3:50 PM	Gas and Power Marketing	Mark Phan, Strategic Planning Advisor, ExxonMobil GAPM
4:30 PM	Closing Remarks	Glenn Harris, Chemist, Independence Oilfield Chemicals
4:40 PM	Social	

## LOCATION

Shell Woodcreek Facility  
200 N Dairy Ashford Rd.  
Houston, TX 77079

## RNC CO-CHAIRS

Glenn Harris  
832-458-9801  
Gharris@independenceoc.com

Jeffrey Rhea  
580-512-3312  
Jeffrey.t.rhea@exxonmobil.com

## MEMBERS

\$50 before June 30, \$60 after

## NON-MEMBERS

\$60 before June 30, \$70 after

## REGISTRATION

[www.spegcs.org/  
roughneck-camp/](http://www.spegcs.org/roughneck-camp/)



## Innovative Custom-Engineered Drilling and Completion Solutions



A Pearce Industries Company

Serving the Oil and Gas Industry Since 1917

Tel: 713-729-2110 Fax: 713-728-4767 [www.tiertools.com](http://www.tiertools.com)

## Performance Additives for Oil & Gas



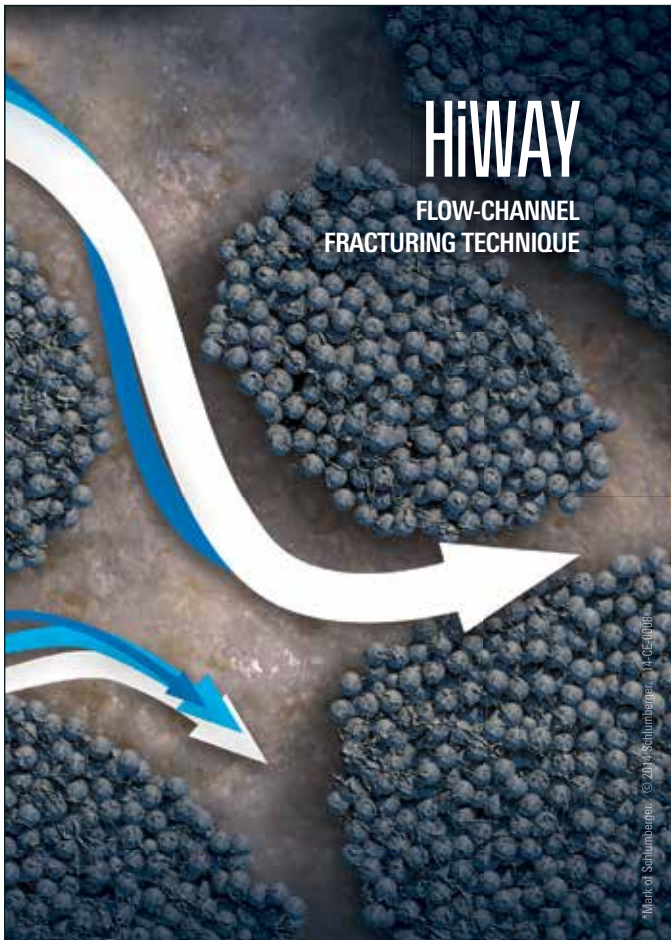
Our products include performance additives for a variety of oilfield applications.

We offer unique solutions for:

- Stimulation
- Drilling
- Cementing

E-mail us at [oilfield@momentive.com](mailto:oilfield@momentive.com).

**MOMENTIVE**



Mark of Schlumberger. © 2014 Schlumberger. 14-CE-0008

## Increase production while saving water, proppant, and time.

The HiWAY\* flow-channel hydraulic fracturing technique creates infinitely conductive pathways within the proppant pack, enhancing productivity and operational efficiency. On average, jobs using the HiWAY technique increase production 20%, use 40% less water, and consume 60% less proppant.

To date, the HiWAY technique has been used in more than 21,000 stages. It has helped

- conserve over 900 million gallons of water
- save 2.8 billion pounds of proppant
- prevent more than 1,000 screenouts
- eliminate over 125,000 road journeys.

Find out more at [slb.com/HiWAY](http://slb.com/HiWAY)



[www.intertek.com](http://www.intertek.com)



### Upstream Services

6700 Portwest Drive | Houston, TX 77024

713.479.8400

[westportservices@intertek.com](mailto:westportservices@intertek.com)

## Delivering Testing Results in Every Phase

### Production Testing Services

- Well Testing
- Well Cleanup
- Frac Flow Back
- Drillstem Testing
- Subsea Test Trees
- Extended Well Tests
- Early Production Facilities



© TETRA and the TETRA logo are registered trademarks of TETRA Technologies, Inc. All rights reserved.

[tetratec.com](http://tetratec.com)

WED  
June 18

6:00 PM TO 8:30 PM

# NEGOTIATION SKILLS & CONFLICT RESOLUTION SOFT SKILLS WORKSHOP

## SPEAKERS

**SUSAN C. HOWES, PE, PHR**

Reservoir Management Organizational Capability Consultant  
Chevron Global Upstream

**MARIA FITCH**

Employee Development Advisor, U.S. Professional Development  
Weatherford International

**ANDREA HERSEY**

Technical Sales Manager  
Momentive Specialty Chemicals Inc.

## Event Info

### LOCATION

TBD

### EVENT CONTACT

*Nii Ahele Nunoo*

507-304-5416

*nii.nunoo@nov.com*

### MEMBERS

\$30

### NON-MEMBERS

\$35

# SPE GCS-HORIZONTAL DRILLING WORKSHOP

FRI  
July 18

7:30 AM TO 4:00 PM

## SPEAKER

*Robello Samuel*

*Halliburton Fellow*

*Halliburton - Landmark/Sperry*

*Drilling Services*

## LOCATION

*SPE GCS Section Office*

*1077 Westheimer Road*

*Suite 1075*

*Houston, Texas 77042*

## EVENT CONTACT

*Nii Ahele Nunoo*

507-304 5416

*nii.nunoo@nov.com*

## COMMITTEE AUXILIARY

*The Houston SPE auxiliary will not have a formal meeting in June, July or August 2014. Please watch for further news of our September kick-off gathering.*

*If you know someone who is interested in joining us or our activities, please contact Nancy Giffhorn, 281-360-4631 or rgiffhorn@aol.com*

## BOOK CLUB

*There will be a summer book club meeting, book and location to be determined.*

## CONTACT

*Martha Lou Broussard*

713-665-4428

DIRECTIONAL  
AND  
HORIZONTAL  
DRILLING  
SPECIALISTS



WWW.NOVADIRECTIONAL.COM

## SEE THE ENERGY WITH TGS' DATA INTEGRATION SOLUTION

See and access all of your G&G data with Volant, TGS' geoscience data and application integration solution.

For more information contact TGS at:  
Tel: +1 713 860 2100  
Email: info@tgs.com



WWW.TGS.COM

© 2013 TGS-NOPEC GEOPHYSICAL COMPANY ASA. ALL RIGHTS RESERVED.

TGS See the energy.

## We Make It Work Right The First Time.

Deeper and deeper water. Larger projects. More complex design challenges. More people with highly specialized skills. Fewer people who see the big picture.

GATE's full-service team takes a larger, systems view of the interactions and intricacies of the project as a whole. This enables us to develop solutions that cross many different disciplines and boundaries.

The result: smoother facility startups, higher uptime and reliability, less operating headaches and improved whole-life value for existing developments.

Materials & Corrosion  
Subsea Engineering  
Offshore Risk Management  
Commissioning & Initial Startup  
Chemical Systems Engineering  
Flow Assurance  
Water Injection

www.gateinc.com



## RPS Knowledge Reservoir

Consulting  
Technical Projects  
Resourcing  
Unconventional  
Conventional  
Deepwater  
Production Solutions  
Knowledge  
Management

knowledge-reservoir.com



## ARE YOU FEELING THE EFFECTS OF THE **Great Crew Change?**

*Replenish  
your company men  
with competent  
personnel...*

Signa's Wellsite Foreman Intern Training (WFIT) program does all the groundwork to provide operators with qualified company men. We screen, select and train optimal candidates, evaluating each of them throughout to ensure they're tailor-made for your company.

- Drilling or Completion
- Establish core skillsets
- Instill good habits
- Get quicker results
- Monitor progress



The WFIT program is a comprehensive 8-mo. training class utilized by large and small operators (As featured in *Offshore magazine*).

Signa Engineering Corp.  
Houston, TX USA  
[www.signaengineering.com](http://www.signaengineering.com)

Contact: Dave Roseland  
281.774.1026  
[droseland@signa.net](mailto:droseland@signa.net)

## Dyna-Drill

Manufacturers of  
Drilling Motor Components

- Mud Motor Power Sections (Sizes: 2 7/8" to 11 1/2")
- Coil Tubing Power Sections (Sizes: 1 11/16" to 3 3/4")
- Matrix-3® Coated Bearings
- Precision Machining

www.dyna-drill.com

Power That Lasts™



# EVENT RECAP

## COMMUNITY SERVICE: THE FUTURE OF PETROLEUM

SPE-GCS hosted the 2nd Annual High School invitational in April, 2014 in which advanced level STEM high school students were invited to attend a professional luncheon. Christine A. Ehlig-Economides, Ph.D., M.S., B.A. presented, "The Future of Petroleum" to the combined audience of professionals and 40+ students. This joint effort between SPE-GCS Community Services and the Permian Basin study group informed the students about various opportunities in the oil and gas industry, as well as provided a platform to ask questions.



## DEEPAK GALA: Oil and Gas Investor's "20 Under 40"



The SPE-GCS wishes to congratulate Deepak Gala for his selection as one of *Oil and Gas Investor's* "20 Under 40". Gala, a member of the SPE-GCS, was profiled in the April 2014 edition for his impressive contributions to the field. This prestigious award recognizes rising stars in Exploration and Production Companies who demonstrate initiative and talent, inspire and motivate colleagues, are engaged with their communities, and are expected to lead the industry into the future.

### DEEPAK GALA

Subject Matter Expert in Well Control, Engineering & Relief Well Planning

In his role at Shell, Gala focuses on global unconventional assets in the Americas, Ukraine, China and Turkey. He has 10 years of industry experience with technical (underbalanced drilling, managed pressure drilling, air drilling and well control engineering) and nontechnical (safety, business process optimization, training, commercial, cost allocation/improvement, financial metrics review) strengths.

Gala holds a BS in chemical engineering from Mumbai University, an MS in natural gas engineering from Texas A&M University-Kingsville, and an MS in finance from Tulane University. He has published more than 20 technical papers, co-authored a chapter in the *Advanced Drilling & Well Technology* textbook published by SPE and is working on a textbook on drilling hazard technologies published by Petex. He is an active member of SPE, AADE and IADCE and volunteers to teach SPE & Petex-sponsored courses. He has received several awards, including the SPE Regional Young Engineer of the Year Award, SPE Young Member Outstanding International Service Award, and SPE Outstanding Technical Editor Award.

# SPE GULF COAST SECTION DIRECTORY

Your guide to your organization leaders

## Officers

### CHAIR

Mike Strathman, The Trinity Group, Inc.  
713-614-6227  
mike-strathman@att.net

### VICE-CHAIR

Jeanne Perdue, Occidental Oil and Gas  
713-215-7348  
jeanne\_perdue@oxy.com

### SECRETARY

David Flores, Consultant  
281-381-5828  
david\_p\_flores@yahoo.com

### TREASURER

Robert Bruant, Jr.,  
Pioneer Natural Resources Company  
972-969-4573  
robert.bruant@pxd.com

### VICE TREASURER

Lucy King, Miller and Lents, Ltd.  
713-308-0343  
lking@millerandlents.com

### CAREER MANAGEMENT

Patty Davis, PetroSkills  
832-426-1203  
Patty.Davis@petroskills.com

### COMMUNICATIONS

Valerie Walker, Anadarko  
832-636-3196  
Valerie.walker@anadarko.com

### COMMUNITY SERVICES

Amy Timmons, Weatherford  
713-836-6563  
amy.timmons@weatherford.com

### EDUCATION

Gabrielle Guerre, Ryder Scott  
713-750-5491  
gabrielle\_guerre@ryderscott.com

### MEMBERSHIP

Xuan (Sun) VandeBerg Harris, Consultant  
832-444-5143  
stem.fields@gmail.com

### PAST CHAIR

Steve Baumgartner, Marathon Oil Corp.  
713-296-3190  
sbaumgartner@marathonoil.com

### PROGRAMS

David Tumino, Murphy Oil Corp.  
281-717-5123  
tuminospe@hal-pc.org

### SOCIAL ACTIVITIES

Jim Sheridan, Baker Hughes  
281-432-9209  
jim.sheridan@bakerhughes.com

### TECHNOLOGY TRANSFER

Carol Piovesan, APO Offshore  
281-282-9291  
cpiovesan@apooffshore.com

### YOUNG PROFESSIONALS

Simeon Eburi, Chevron  
simeon.eburi@chevron.com  
806-544-0829

### DIRECTOR 2012-14

Alex McCoy, Occidental Oil and Gas  
713-366-5653  
alexander\_mccoy@oxy.com

### Kevin Renfro, Anadarko

832-636-8613  
kevin.renfro@anadarko.com

### Wolfgang Deeg, Shell

281-544-8279  
wjdeeg@spemail.org

### DIRECTOR 2013-15

Trey Shaffer, ERM  
281-600-1016  
Trey.Shaffer@erm.com

### John Lee, UH

713-743-4877  
wjlee3@uh.edu

### Deepak Gala, Shell

281-544-2181  
deepak.gala@shell.com

### SPE GULF COAST NORTH AMERICA REGIONAL DIRECTOR

Bryant Muller, Halliburton  
281-818-5522  
Bryant.Mueller@halliburton.com

## Committee Chairs

### AWARDS

James Rodgerson, BP  
281-221-4085  
james.rodgerson@bp.com

### CONTINUING EDUCATION

Nii Ahele Nunoo, NOV  
507-304 5416  
Nii.Nunoo@nov.com

### ESP WORKSHOP

Noel Putscher, Newfield  
281-674-2871  
nputscher@newfield.com

### GOLF

Cameron Conway, KB Machine  
281-217-0660  
cconway@kb-machine.com

### INTERNSHIPS

Gabrielle Guerre, Ryder Scott  
713-750-5491  
gabrielle\_guerre@ryderscott.com

### NEWSLETTER

John Jackson, Unimin Energy  
832-247-0233  
editor@spgcs.org

### SCHOLARSHIP

Tanhee Galindo, Consultant  
832-693-9010  
gcs-scholarship@spemail.org

### SPORTING CLAYS

Paul Conover, NOV  
713-346-7482  
paul.conover@natoil.com

### TECHNOLOGY TRANSFER

Carol Piovesan, APO Offshore  
949-232-6353  
cpiovesan@apooffshore.com

### TENNIS

James Jackson, Halliburton  
713-366-5704  
james.jackson@halliburton.com

### WEB TECHNOLOGY

Shivkumar Patil, Aker Solutions  
713-369-5352  
Shivkumar.Patil@akersolutions.com

### SECTION MANAGER

Kathy MacLennan, SPE-GCS  
713-779-9595 x 813  
kmaclennan@spe.org

## Study Group Chairs

### BUSINESS DEVELOPMENT

Steve Mullican, Grenadier Energy Partners  
281-907-4120  
smullican@grenadierenergy.com

### COMPLETIONS & PRODUCTION

Mark Chapman, CARBO Ceramics  
281-921-6522  
mark.chapman@carboceramics.com

### DIGITAL ENERGY

Rick Morneau, Morneau Consulting  
281-315-9395  
rickmorneau@outlook.com

### DRILLING

Joe Tison, Greene Tweed  
281-784-7805  
wtison@gtweed.com

### GENERAL MEETING

Raja Chakraborty, Shell  
281-544-2148  
Raja.Chakraborty@shell.com

### HEALTH, SAFETY, SECURITY, ENVIRONMENT AND SOCIAL RESPONSIBILITY

Trey Shaffer, ERM  
281-600-1016  
trey.shaffer@erm.com

### INTERNATIONAL

Owen Jones, ExxonMobil  
Development Company  
832-624-2019  
owen.jones@exxonmobil.com

### NORTHSIDE

Naval Goel  
650-307-7267  
navalgoel@hotmail.com

### PERMIAN BASIN

Amy Timmons, Weatherford  
713-836-6563  
amy.timmons@weatherford.com

### PETRO-TECH

Marci Nickerson, Consultant  
713-446-3400  
mnick52@sbcglobal.net

### PROJECTS, FACILITIES, CONSTR.

Chris Shaw, Shell  
281-544-6796  
C.Shaw@shell.com

### RESEARCH & DEVELOPMENT

Skip Davis, Technology Intermediaries  
281-359-8556  
skdavis@technologyintermediaries.com

### RESERVOIR

Sunil Lakshminarayanan, Weatherford  
713-849-1861  
sunil.lakshminarayanan@weatherford.com

### WATER & WASTE MANAGEMENT

Kira Jones, Momenive  
281-646-2827  
kira.jones@momenive.com

### WESTSIDE

Andrea Hersey, Momenive  
281-646-2805  
andrea.hersey@momenive.com

# CONNECT

Information

## Newsletter Committee

CHAIRMAN | John Jackson  
editor@spegcs.org

AD SALES | Pat Stone  
starlite1@sbcglobal.net

BOARD LIAISON | Valerie Walker

NEWSLETTER DESIGN | DesignGood  
designngood.com  
designngoodstudio.com

## SPE Houston Office

### GULF COAST SECTION MANAGER

Kathy MacLennan | kmaclellan@spe.org

### GCS ADMINISTRATIVE ASSISTANT

Sharon Harris | sharris@spe.org

### HOURS & LOCATION

10777 Westheimer Road, Suite 1075

Houston, Texas 77042

P 713-779-9595

F 713-779-4216

Monday - Friday 8:30 a.m. to 5:00 p.m.

## Photo Submissions

We are looking for member photos to feature on the cover of upcoming issues! Photos must be at least 9" by 12" at 300 DPI. Email your high resolution picture submissions to:  
editor@spegcs.org

## Change of Address

To report a change of address contact:

Society of Petroleum Engineers

Member Services Dept.

P.O. Box 833836

Richardson, Texas 75083-3836

1.800.456.6863

service@spe.org

## Contact

For comments, contributions, or delivery problems, contact [editor@spegcs.org](mailto:editor@spegcs.org).



# ULTIMATE EOR

The Ultimate Source for Enhanced Oil Recovery

## Chemical EOR for the 21st Century

- Solid theoretical foundation built at UT Austin
- Robust chemical formulations, for any salinity and hardness
- Very low chemical retention
- Efficient chemicals at lower concentrations
- UTCHEM – leader in simulation
- Commercially Independent
- Integrated support from lab to field throughout project life
- Patented, proprietary chemical systems

ACCEPTING PROJECTS AT OUR NEW FACILITY IN AUSTIN.  
 Contact Charles Christopher at Charles@ultimateeor.com or 713.502.3008 and let us engineer a successful project for you.



NON-PROFIT ORGANIZATION  
 U.S. POSTAGE PAID  
 PERMIT NO. 6476  
 HOUSTON, TX

SOCIETY OF PETROLEUM ENGINEERS  
 GULF COAST SECTION

10777 Westheimer Road  
 Suite 1075  
 Houston, TX 77042

# CALENDAR

June 2014

Sunday	Monday	Tuesday	Wednesday	Thursday	Friday	Saturday
	1	2	3	4	5 <i>Research &amp; Development</i>	6 <i>Sporting Clays Tournament</i>
	8	9	10	11 <i>Board Of Directors</i> <i>YP Luncheon</i>	12	13
	15	16 <i>HSSE-SR</i>	17 <i>Continuing Education</i>	18	19	20
	22	23	24 <i>Projects, Facilities &amp; Construction</i>	25 <i>Emerging Engineers Conference</i> <i>YP Networking Event</i>	26	27
	28	29	30			