



Gulf Coast Section

MARCH
2014

CONNECT

SPE GULF COAST SECTION NEWSLETTER

U.S. Natural Gas Export Opportunities

GENERAL MEETING P. 9

Thinking Constructively about the Reuse of Produced Water in Hydraulic Fracturing

COMPLETIONS & PRODUCTION P. 13

VALUE OF DISPERSANT FOR OIL SPILL RESPONSE

HSSE-SR P. 19

COMPLETION DIAGNOSTIC TRENDS IN THE MARCELLUS SHALE

WESTSIDE P. 29

FORENSIC TESTING

RESEARCH & DEVELOPMENT P. 25



CHAIR'S CORNER

MIKE STRATHMAN
2013-2014 SPE-GCS Chair

Membership is the heart of our section. All the activities we promote are there to serve professionals in the industry. The activities might include anything from technology sharing and socializing with colleagues, to serving the local community. As of the end of 2013, there were 18,347 members serving in the Gulf Coast Section. This is up 1,298 members (8%) from Dec. 2012. Although we are the largest section in the SPE global community, we still continue to grow. This poses challenges (as well as opportunities) to create programs that are interesting and beneficial to all members. We welcome your ideas to better serve you. Last year we reaffirmed our strategic target areas of Professional Development, Investment in Community, Membership Support, and Administrative and Financial Governance. These broad areas are explained in the 2013 Strategy Document available on the website under the About SPE-GCS button. Please feel free to share your ideas and volunteer energy towards new approaches to achieve those strategies.

It is spring and the smell of golf is in the air. Get your foursome together and make plans to attend one of our biggest events. The 41st Annual SPE-GCS Golf Tournament is planned for April 14, 2014, at the Kingwood and Deerwood Country Clubs. Sponsorship opportunities are available and details can be found on the SPE-GCS event calendar.

This is an important fundraising event that supports our Scholarship Fund. Scholarships help encourage deserving students to gain essential technical skills and knowledge for their careers, which in turn makes our industry better. Scholarships are even more important now to meet an unprecedented industry demand for science, technology, engineering and math (STEM) skills. Please enjoy some golf as we need your support more than ever!

At the Kickoff Meeting last August, I was asked a question about the gender diversity of GCS leadership. The SPE-GCS is privileged to have many women in our leadership ranks. On the Board, we have Jeanne Perdue, Vice Chair; Lucy King, Vice Treasurer; Valerie Walker, Communications; Patty Davis, Career Management; Amy Timmons, Community Services; Gabriel Guerre, Education; Xuan Vandenberg Harris, Membership; and Carol Piovesan, Technology Transfer. These capable section leaders contribute excellent viewpoints and generate new ideas. We also have many female Study Group and Committee leaders providing expertise and guidance. The oil industry in general is increasing the number of women in its ranks, according to a recent survey. Rigzone ran a series of articles last year and into 2014 about "Women Who Shine" in the oil patch. Parents, tell your daughters

there is a lucrative and interesting career for them in energy, if they want it. Thanks to everyone who contributes to making the SPE-GCS a success.

THOUGHT YOU SHOULD KNOW...

HSE Now is an online source for news and technical information affecting the health, safety, security, environment, social responsibility, regulation, and quality aspects of the upstream oil and gas industry. HSE Now is updated continually and is available to all SPE members for free. To sign up for regular updates, sign in to SPE.org, and search for HSE Now.

OnePetro— Check out the enhancements to OnePetro, your comprehensive online library of technical literature and journal articles chronicling the E&P industry. You can now personalize your searches, get alerts, rate papers, and browse pages by journal and/or conference. Enjoy advanced sort-and-filter options and a Google Translate menu with 80 language choices. SPE is working hard to make sharing technology better and easier.

We want you to be involved with the section's activities. There are lots of ways to become involved: attend an event and bring a friend, visit the website and explore the Study Groups, or send us an email and ask what you can do to help. I personally welcome your comments and ideas to help the SPE Gulf Coast Section serve you and your career better. Please contact me at mike-strathman@att.net.

FEATURES

March 2014

STUDY GROUPS

RESEARCH & DEVELOPMENT

3/6/14

Forensic Testing

P. 25

RESERVOIR

3/6/14

Fracture Modeling, Microseismic Measurements and Production Evaluation: What's the Role of SRV?

P. 26

NORTHSIDE

3/11/14

A Decade Monitoring Shale Gas Plays Using Microseismicity: Advances in the Understanding of Hydraulic Fracturing

P. 21

GENERAL MEETING

3/13/14

U.S. Natural Gas Export Opportunities

P. 9

PROJECTS, FACILITIES & CONSTRUCTION

3/19/14

The Human Factor: Process Safety and Culture

P. 23

WESTSIDE

3/19/14

Completion Diagnostic Trends in the Marcellus Shale

P. 29

DRILLING

3/19/14

Cost-Effective Ultra-Large-Diameter PDC Bit Drilling in Deepwater Gulf of Mexico

P. 17

DIGITAL ENERGY

3/19/14

Understanding the Potential of Case-Based Reasoning in the Oil Industry

P. 15

HSSE-SR

3/25/14

Value of Dispersant for Oil Spill Response

P. 19

COMPLETIONS & PRODUCTION

3/26/14

Better Modeling of Hydraulically Fractured Horizontal Wells in Unconventional Reservoirs

P. 13

RESERVOIR

3/27/14

Better Modeling of Hydraulically Fractured Horizontal Wells in Unconventional Reservoirs

P. 27

BUSINESS DEVELOPMENT

4/2/14

Private Equity: Current and Future Perspectives in the E&P Sector

P. 11

COMMITTEES

YOUNG PROFESSIONALS

3/12/14

The Role of Renewable Energy at an Integrated Oil Company

P. 31

EXECUTIVE CLUB WINNERS

P. 33



P. 35

GOLF

4/14 /14

IN EVERY ISSUE

SPE-GCS MEMBERSHIP REPORT

January 2014

VOLUNTEER SPOTLIGHT

John Jackson

P. 5

THEN & NOW

Buddy Woodroof

P. 6

SPE GULF COAST SECTION DIRECTORY

P. 38

MORE

EVENT RECAP

P. 37

THU
March
13

7:30 AM TO 10:30 AM

BOARD OF DIRECTORS MEETING

LOCATION

SPE Houston Office
10777 Westheimer Rd.
Suite 1075
Houston, TX 77042

EVENT CONTACT

Sharon Harris
713-457-6821 EXT. 821
713-779-4216 FAX
sharris@spe.org

Trust your harness?



one reliable solution. Entero[®] MOSAIC[™]

With over ten years of continuous progress and innovation for corporate reserves and evaluations, Mosaic has the product stability and client responsiveness that E&P companies have come to expect. Discover what it's like to have a system and team you can depend on to achieve your end goal.

- Better Productivity
- Higher Efficiency
- Faster Speed
- Trusted Information

Expect More. Accomplish More. Learn More at www.entero.com/mosaic
Contact Jill Wyatt at: (713) 446-4633

entero[®]
energy software

SPE-GCS MEMBERSHIP REPORT

January 2014

JANUARY 2014

Total: **10,237**

YP: **1,821**

DECEMBER 2013

Total: **16,545**

YP: **3,918**

SPE-GCS Members	JANUARY		DECEMBER	
	Total	YP	Total	YP
New Members	109	49	137	84
Reinstated	0	0	0	0
Transferred to Section	61	30	10	6
Unpaid	6,621	2,026	1,996	684

Student Members	JANUARY		DECEMBER	
	Paid	Unpaid	Paid	Unpaid
Texas A&M	350	448	904	168
Rice	18	36	54	2
HCC	34	31	138	11
UH	151	262	433	49
Total	553	777	1,529	230

Total Paid/Unpaid	10,790	7,398	18,074	2,226
% Paid	59.3%		89.0%	



VOLUNTEER SPOTLIGHT

John Jackson

CCR TECHNOLOGIES

This month, the SPE Gulf Coast Section wishes to recognize our Connect newsletter editor and Newsletter Committee Chair, John Jackson, better known to our Young Professionals as "J.J." Compiling all the pieces of a 36-page monthly publication and making sure that the information is correct is a big job. We appreciate the high quality of our attractive newsletter, which is one of our Sections's primary means of communication with our members.

J.J. has been very active in the Young Professionals committee, serving as co-chair of the 2013 Roughneck Camp, an annual one-day conference focused on welcoming new members to the oil and gas industry. The event provided a technical overview of the industry as well as professional development and networking opportunities to a sold-out room full of 350 young professionals, students and interns.

After that success, J.J. was elected as Secretary of the YP Board, which involves organizing and documenting the monthly YP board meetings, acting as historian, maintaining the YP Bylaws, and overseeing the YP Annual Report and Outstanding YP section application.

In his paying job, J.J. is a sales engineer at CCR Technologies, where he supports North America with mobile reclaiming unit operations and develops equipment-rating spreadsheets to help troubleshoot and debottleneck existing facilities. He also generates and maintains process simulations of all projects and provides support to the fabricators of the company's MEG and amine reclaimers. Prior to that, he was a sales support analyst and technical development specialist at Momentive Specialty Chemicals.

But at his roots, J.J. is a chemist. While he was earning his B.S. in Chemistry at Sam Houston State University, he taught organic and inorganic labs as a chemistry teaching assistant. With his free time, J.J. tutors math and science for middle and high school kids every week.

2011-2012 2012-2013 2013-2014



THEN & NOW

Column by
BUDDY WOODROOF



Due to strained U.S.-Panama relations, more and more American oil tanker owners are shifting their tanker registry from Panama to Liberia, the world's leading flag of convenience.

The Ghawar "trend" in Saudi Arabia officially becomes a "field", and is instantly recognized as the largest oil field in the world.

The pace of ultradeep drilling in the U.S. is rising, with 44 wells slated for targets below 17,500 ft in 1964, compared to only 38 in all of 1963.

What country is predicted to be the second biggest wildcatter for the rest of the decade? Would you believe Russia, as it forecasts to drill over 200 million ft of exploration hole through 1970. By comparison, the U.S. drilled 45 million ft of exploration hole in 1963.

East Texas crude oil - \$3.10/bbl; U.S. active rig count - 1,440



Texaco comes up with a promising solution for the disposal of crude oil tank bottom sludge, using its coal gasification process that converts the sludge into medium BTU gas with no hazardous byproducts.

Japanese oil companies are being pressured by their government to cut Iranian crude oil imports as a result of the Ayatollah Khomeini's call for the death of U.K. author Salman Rushdie.

Deep wildcats are proposed in the Chukchi Sea off of Alaska by Shell and in eastern West Virginia by Texaco and Exxon.

Phillips is reported to be negotiating a joint venture with South Korea's Hyundai for a \$100 million, 3-year exploration campaign in the Beaufort Sea off California and in the Gulf of Mexico.

Could Hyundai gas stations be on the horizon?

WTI crude oil - \$18.37/bbl; U.S. active rig count - 757



Operators line up to file applications to build LNG complexes along the west coast and in the Gulf of Mexico, specifically, Marathon and ChevronTexaco off Baja California and Freeport-McMoRan in Main Pass.

Virginia and Maryland officials are closely watching a 6-mile fuel oil slick about 50 miles off the Virginia coast resulting from the explosion on a Norwegian tanker en route from New York to Houston. Three crewmen were killed and 18 others missing following the explosion.

During a ceremony granting a license to ChevronTexaco to explore for natural gas off of Venezuela's northeastern coast, President Hugo Chavez reiterates Venezuela's desire to continue commercial relations with the U.S. and other countries in the hopes of obtaining "peace, respect, and integration." So much for those goals!

What company submitted the largest number of high bids in this year's Gulf of Mexico central lease sale covering Louisiana, Mississippi, and Alabama, you ask? Would you believe Magnum Hunter Production?

Light sweet crude oil - \$36.64/bbl; Natural gas - \$5.48/MMbtu; U.S. active rig count - 1,129

THE REST OF THE YARN

This month we continue our look back at the life and times of Henry Ford.

Demand for the T (the letter doesn't stand for anything special) propelled Henry to devise the ideal way to manufacture it. In the years 1913-14, at Ford Motor's Highland Park plant on the outskirts of Detroit, he and his team introduced the modern assembly line, cutting the amount of time required to build a Model T from 12 ½ hours to 93 minutes, and slashing the car's retail price to \$440. By the mid-1920's, a T could be assembled in fewer than 30 minutes and sold for \$290.

Ford Motor Company became the world's biggest car company and America's highest-profile firm. By 1915 Henry Ford was one of the most famous men alive - a folk hero admired by millions. In his earlier years, as he worked on engines and cars, Henry Ford often exhibited an appealing openness. He was willing to play with new ideas, to listen to others, to mess around imaginatively. Later on, as the Model T became more and more successful, as he became richer and more powerful, those tendencies faded. Openness, perhaps, made him feel too vulnerable. He let the flinty stuff inside of him take over. He became egocentric and controlling.

Ford's dark side mushroomed into shocking rigidity, paranoia, and cruelty. The story of his deterioration is not well documented, enshrouded as he is in noble legend, but respected historians and journalists have confirmed it.

Next month, Henry's dark side becomes violent.

Then & Now March QUIZ

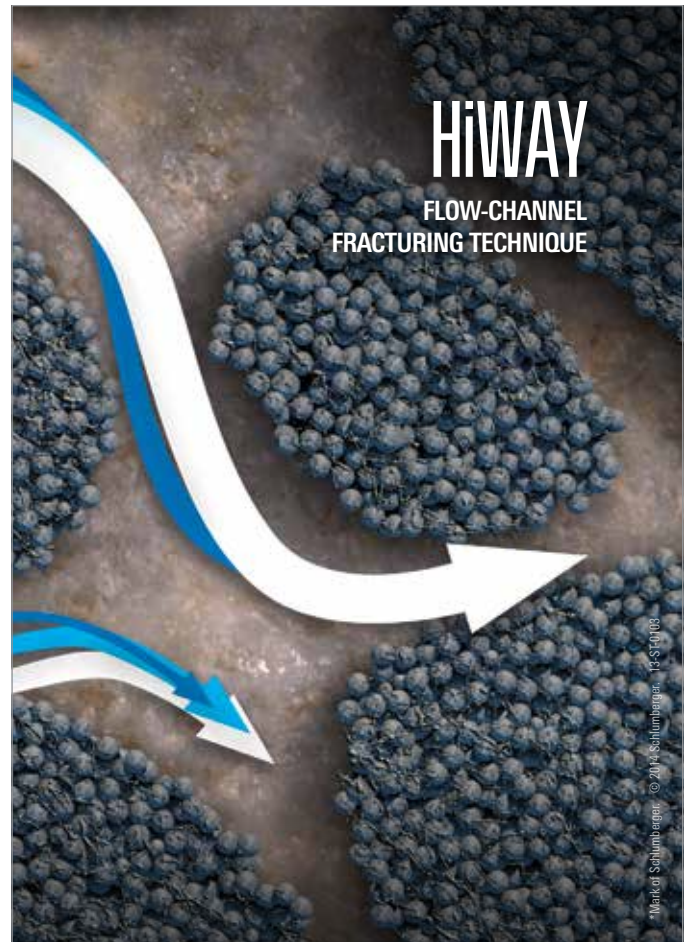
This one goes back a ways!
Arrange the following commodities in increasing order of their cost per pound in the Babylonian Empire circa 500 B.C.: a) purple dye b) asphalt c) wool d) iron and e) copper

Answer to February's Quiz

Of the companies: Gulf, Sohio, ARCO, Texaco, and Phillips, only Phillips failed to earn \$1 billion in calendar year 1979

No Winner for January

If you would like to participate in this month's quiz, e-mail your answer to contest@spe.org by noon, March 15th. The winner, who will be chosen randomly from all correct answers, will receive a \$50 gift card to a nice restaurant.



Increase production while saving water, proppant, and time.

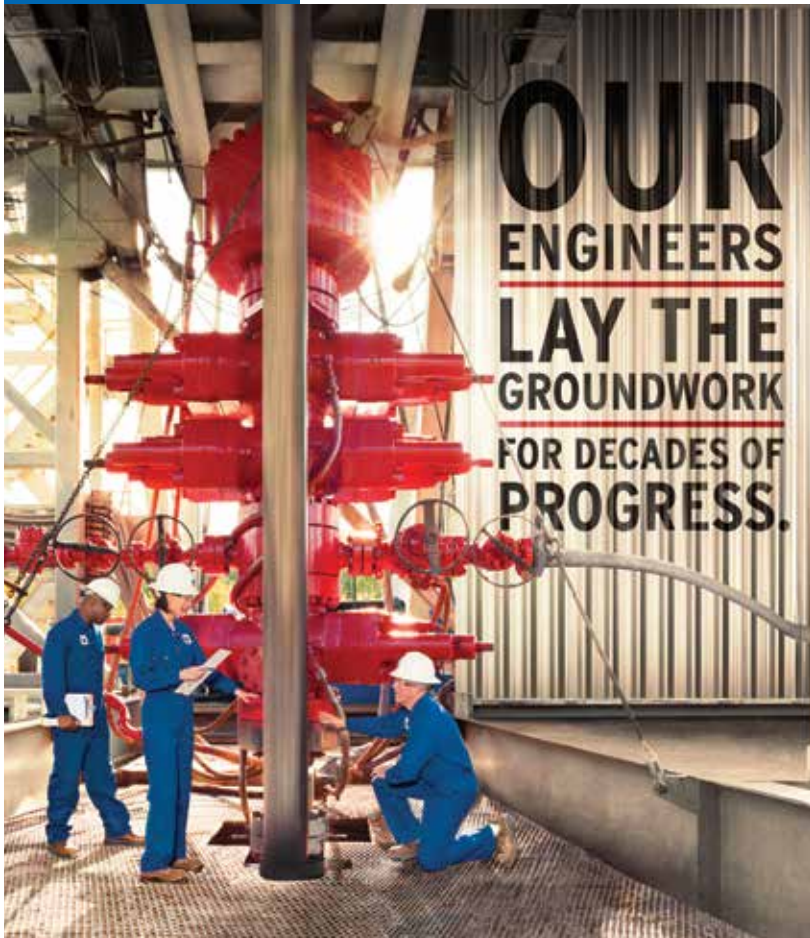
HiWAY* flow-channel hydraulic fracturing creates infinitely conductive pathways within the proppant pack, enhancing productivity and operational efficiency. On average, HiWAY jobs increase production 20%, use 40% less water, and consume 60% less proppant.

To date, HiWAY technology has been used in more than 21,000 stages. It has helped

- conserve over 900 million gallons of water
- save 1.4 billion pounds of proppant
- prevent more than 1,000 screenouts
- eliminate over 125,000 road journeys.

Find out more at
slb.com/HiWAY

Schlumberger



**OUR
ENGINEERS
LAY THE
GROUNDWORK
FOR DECADES OF
PROGRESS.**

At Chevron, you'll join a team with the technology to take on big challenges, the integrity to do it responsibly, and the drive to keep the world moving forward. If you're up to the job, visit chevron.com/careers

Chevron is seeking experienced petroleum engineers for production, reservoir, reservoir simulation, drilling and completions positions.

**JOIN THE
CHALLENGE.**



Human Energy[®]

An equal opportunity employer that values diversity and fosters a culture of inclusion. CHEVRON, the CHEVRON Hallmark and HUMAN ENERGY are registered trademarks of Chevron Intellectual Property LLC. © 2013 Chevron U.S.A. Inc. All rights reserved.

DEDICATED TO DELIVERING STRATEGIC VALUE FOR OUR CLIENTS.

maxoil
PROCESS SOLUTIONS
ABERDEEN • LONDON • HOUSTON • STAVANGER • KUALA LUMPUR • PERTH

We are an independent, multi-disciplined technical consultancy servicing the international oil and gas industry.

- OPERATIONS ASSURANCE
- SUBSEA PRODUCTION REALIZATION
- FLOW ASSURANCE
- SEPARATION SYSTEMS
- GAS TREATMENT & TRANSPORT
- PRODUCED WATER MANAGEMENT
- SAND & SOLIDS MANAGEMENT
- CONTAMINANTS MANAGEMENT
- CHEMICAL MANAGEMENT
- PROCESS/PRODUCTION OPTIMIZATION
- PROCESS TROUBLESHOOTING
- OPERATIONS PERFORMANCE STRATEGY (OPS)
- SYSTEMS AWARENESS TECHNICAL TRAINING

MAXIMIZING PERFORMANCE THROUGH OPERATIONAL EXCELLENCE
contact@maxoilsolutions.com • www.maxoilsolutions.com

We're GROWING...

Introducing our Total Managed Displacement Services (TMDS™):

Our proprietary suite of wellbore cleanout tools, non-pollutant displacement chemicals, surface pit cleanout and fluids filtration services, and direct job validation.

Delivering the ultimate clean wellbore for maximizing completion success.

 **Abrado Wellbore Services**

www.abrado-intl.com
Email us at: info@abrado-intl.com

U.S. Natural Gas Export Opportunities

With an abundance in natural gas resources, it seems certain that the United States will become a major natural gas export country in the next decade. Mr. Antonov will discuss his views on the natural gas market, pipeline gas export to Mexico, and LNG export to the global market. He will also discuss the opportunities and challenges faced by a global gas producer like Gazprom and present GM&T USA's experiences and involvement in the upcoming export growth.

Mikhail Antonov

Mikhail Antonov is President and Managing Director for Gazprom Marketing and Trading USA (GM&T USA). Gazprom is one of the world's largest gas companies with a 14% share of worldwide production and an 18% share in worldwide natural gas reserves. GM&T USA is a fully owned Gazprom subsidiary operating in the U.S. and Mexico. It is active in trading, marketing and supplying natural gas, and business development in the Americas.

Prior to Gazprom, Antonov spent over a decade with the largest private Russian oil company, Lukoil. He was involved in strategic planning, investment analysis, and corporate M&A at Lukoil. Later he moved into refining operations, and petrochemical and gas processing. His recent positions include First Deputy Head of Global Refining for OAO Lukoil, where he was responsible for global refining, petrochemical operations and business development of 14 Lukoil refineries, petrochemical, and gas plants.

He also worked as Refining Director in Lukoil Trade and Supply Company (LITASCO) in Geneva and Planning Director for the Lukoil ISAB refinery in Italy. His primary focus was the integration and operation of Lukoil Western European refineries, following their recent acquisitions.

He has served as the head of and a member of various steering committees, supervisory boards of production companies (Zeeland, Burgas, ISAB, Odessa refineries), and trading organizations (LITASCO). Prior to Lukoil, he worked as a CFO of a holding company and a portfolio manager in commercial and investment banking. Mikhail holds an MBA degree from London Business School and a Master's Degree from the International University in Moscow.



Event Info

SPEAKER

*Mikhail Antonov
President & Managing Director
Gazprom Marketing & Trading USA
(GM&T USA)*

LOCATION

*Petroleum Club
800 Bell Street, 43rd floor
Houston, TX 77002*

EVENT CONTACT

*Barry Faulkner
281-627-8790
barryfaulkner@earthlink.net*

MEMBERS

\$35 before 3/12/2014

NON-MEMBERS

\$40 before 3/12/2014

Private Equity: Current and Future Perspectives in the E&P Sector

Join us at the Four Seasons Hotel as we discuss the recent evolution of the O&G Private Equity model. Do PE companies have appetite left after these last active years? Have the investment return requirements changed? Are they targeting the same company profile? Do PE companies still have the same investment horizons and similar fund sizes?

We will also talk about exit strategies, given that IPOs have been used more often in the last few years. Are they here to stay or will private sales come back to be the exclusive exit process? The BD group is working towards adding a fourth member to this panel of Sponsors and PE-backed companies in several stages of maturity to discuss these questions and more.

Please join us for this informative discussion. The popular format of a Business & Social Networking hour, with complimentary hors d'oeuvres and a cash bar, followed by an hour and a half long program, including a Q&A session, will begin at 5:00 PM in the Mezzanine.

V. Frank Pottow



Mr. Pottow has over 25 years of private equity investment experience and currently serves as the Managing Director and Co-Founder of GCP Capital Partners, and the director of several private E&P companies. Previously, he was a Co-Founder and Managing Director of Societe Generale Capital Partners, and an analyst at Morgan Stanley. Mr. Pottow is a graduate of The University of Pennsylvania and Harvard Business School.

Michael Magilton



Mr. Magilton leads the corporate finance and treasury functions of Quantum Resources where, he manages the Partnership's banking relationships, and plays a central role in M&A transactions and capital markets activities. Previously, he served as a Vice President at Aurora Capital Group and was an Associate at First Reserve Corporation. Mr. Magilton is a graduate of Creighton University and Harvard Business School.

Matt McCarroll



Mr. McCarroll is the founder, President and CEO of Fieldwood Energy LLC, a portfolio company of Riverstone Holdings LLC. Fieldwood has completed two material acquisitions in the Gulf of Mexico over the past 6 months, and is the largest operator and leaseholder in the shallow water Gulf of Mexico. Mr. McCarroll was founder, President and CEO of Dynamic Offshore Resources, President of Maritech Resources, and a Senior VP of Plains Resources. He has a BBA in Finance from LSU, and serves on numerous industry associations.

Event Info

SPEAKERS

V. Frank Pottow
Managing Director & Co-Founder
GCP Capital Partners LLC

Michael Magilton
Vice President, Finance & Treasurer
Quantum Resources

Matt McCarroll
President & CEO
Fieldwood Energy LLC

HOST & MODERATOR

Kirk Tholen
Managing Director &
Head of A&D Credit
Agricole Securities

LOCATION

Four Seasons Hotel
1300 Lamar,
Between Caroline & Austin
Houston, TX 77010

EVENT CONTACT

Ricardo Concha
713-890-1418
ricardo.concha@credit-suisse.com

MEMBERS

\$40 in advance, \$50 at door

NON-MEMBERS

\$45 in advance, \$50 at door

Broaden your expertise.



NExT and Petrel are marks of Schlumberger © 2014 Schlumberger. All rights reserved. 10/14/14

NExT oil and gas training and career development instructs more than 10,000 E&P professionals every year.

With hands-on mentoring and coaching, at a Schlumberger training facility or on the job, NExT training can help you expand your technical expertise.

To view our full list of courses, and to enroll, visit **NExTtraining.com**

Featured Geology Field Trip
 Practical Fracture Analysis
 of Clastic Reservoirs with Petrel
 June 15–20, 2014
 Casper, Wyoming, USA



PREMIUM CONNECTIONS

Meeting your exacting requirements.

SealLock® | WedgeLock®
 TKC™ | TS™
 connection technology

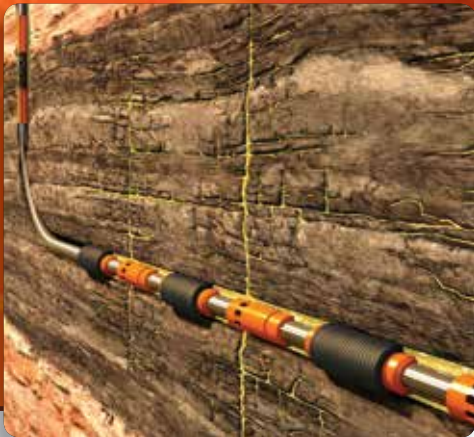


www.huntingplc.com

© 2013 Hunting

TAM SOLUTIONS

PROVEN, PREDICTABLE, PACKER PERFORMANCE



TAM PosiFrac™ Systems:

With PosiFrac™ you have an all-inclusive, multi-stage system for open-hole hydraulic fracture applications. And you have the experts to run it from service centers in your region. You'll get your completion on depth, on time, with the best swellable packers available. And that's as complete as it gets.



TAM INTERNATIONAL
 Inflatable and Swellable Packers
 45 YEARS OF SUCCESS

WELL INTERVENTION | DRILLING & COMPLETIONS | UNCONVENTIONAL RESOURCES | RESERVOIR OPTIMIZATION

www.tamintl.com

The SimpleStart™ toe sleeve

Simply pressure up and test the casing; the toe sleeve opens automatically for initial injection.

ncsfrac.com



© 2013 NCS Energy Services LLC. Multistage Unlimited, SimpleStart, and "Leave nothing behind" are trademarks of NCS Energy Services LLC.

Providing Engineered Solutions

281.955.2900
www.stress.com



STRESS ENGINEERING SERVICES INC.
 DESIGN • ANALYSIS • TESTING

WED
March 26

11:30 AM TO 1:00 PM

Thinking Constructively about the Reuse of Produced Water in Hydraulic Fracturing

In their mission to efficiently and responsibly produce an asset, today's completions engineers must balance several competing factors regarding mixwater. Freshwater costs, disposal costs for accumulated produced water, and logistical elements of the pad location need to be considered in light of the effects of water quality on completion quality, particularly when highly saline water is considered.

Historically, optimum costs have been difficult to model because decisions made on one of the interrelated factors affect several other factors simultaneously and in different ways. This talk presents an overview of a reservoir-centric model that helps with decision-making, including logistics, frac fluid quality, and impact on the producing reservoir. A preliminary case study demonstrating successful fracturing operations in a horizontal well using a robust gelled fluid based on standard underivatized guar in ~300,000 ppm TDS mixwater of variable quality will be presented. This may represent a critical step in delivering the best completion engineering at reasonable cost.

Dr. Bruce MacKay

Dr. MacKay has been with Schlumberger for seven years, as a Product Developer and Research Scientist, and most recently as Principal Chemist and Client Support Laboratory Manager for the North American business unit of Schlumberger Well Services. Prior to joining SLB, he was a Visiting Scientist at the California Institute of Technology after completing a Ph.D. in inorganic chemistry at the University of British Columbia. His area of expertise, broadly stated, is the application of chemical knowledge to problems in stimulation fluids.



Event Info

SPEAKER

*Dr. Bruce MacKay
Client Support Laboratory Manager
Schlumberger Well Services*

LOCATION

*Greenspoint Club
16925 Northchase Drive
Houston, TX 77060*

EVENT CONTACT

*Jonathan Godwin
281-921-6526
jgodwin@carboceramics.com*

MEMBERS

\$35 in advance, \$40 at door

NON-MEMBERS

\$35 in advance, \$40 at door

LUFKIN

Expect More

More **SYSTEMS**
More **SERVICES**
More **LOCATIONS**

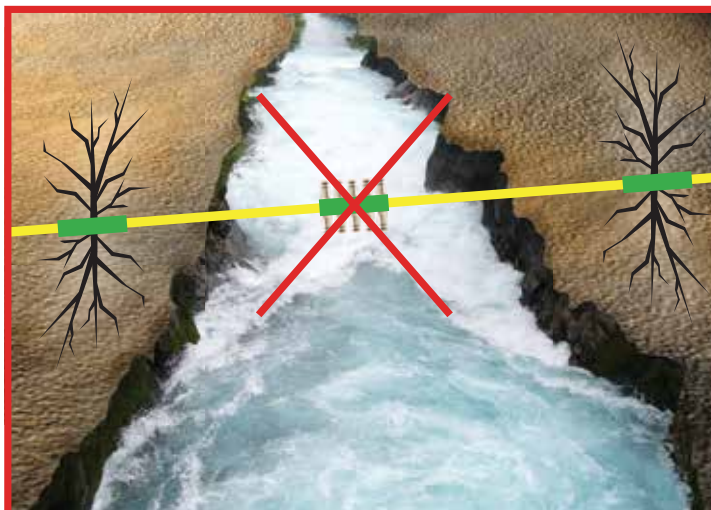


Pump jacks with legendary quality and reliability have been the reputation of Lufkin for more than 100 years. In that same tradition, Lufkin now offers more artificial lift systems, more support services and more locations to serve operators around the world. These highly engineered solutions, supported by our experienced staff, deliver optimum production from your oil and gas wells.

Now, more systems and services to meet your requirements:

- Automation
- Beam Pumping Units
- Hydraulic Pumping Units
- Reciprocating Pumps
- Progressing Cavity Pumps
- Production Optimization
- Well Monitoring
- Secure Scada
- Plunger Lift
- Gas Lift
- Completion Products
- Maintenance & Repair
- Training

The Energy Flows Through Us®
 LUFKIN.COM



Don't send your frac down a river.

Let Geotrace show you how to save **money** and **water** on your frac programs by detecting subtle faults and fracture systems before drilling.



Geotrace
 TECHNOLOGIES

www.geotrace.com

rock ©gillem|sac.hu, river ©bigatt01|morque@k.com, nozzles ©Wendy Kavaney|Dreamstime.com

MULTI-STAGE COMPLETIONS



Not all ball-drop systems are created equal.

Our QA/QC process provides 100% traceability with 2D barcodes ensuring that every system is tracked from raw steel to on-site delivery. Contact us today and let us help you maximize your assets.



DO IT ONCE. DO IT RIGHT.

Packers Plus®
www.packersplus.com

WED
March 19

11:30 AM TO 1:00 PM

Understanding the Potential of Case-Based Reasoning in the Oil Industry

Case-based reasoning (CBR) is a soft computing technology developed to deal with uncertainty, approximate reasoning, and exploit knowledge domain. Case-based reasoning, also known as computer reasoning by analogy, is a simple and practical technique that solves new problems by comparing them to ones that have already been solved in the past, thus saving time and money. This presentation provides a general framework of case-based reasoning along with a review of the four-step cycle that characterizes the technology (retrieve, reuse, revise and retain), followed by two specific applications where the technology was used in field operations. The proposed methodology extracts the relevant historical information, captures critical knowledge, utilizes a rule-based system to make adaptations, and then suggests the most appropriate solution for decision-making. These simple case studies demonstrate how case-based reasoning can be applied to improve the design, planning and execution of well operations, thus significantly increasing the job execution success while avoiding known pitfalls. In addition, the work demonstrates the value of captured “on-site” experience and shows the advantages of using intelligent systems in information and knowledge management.

Dr. Andrei Popa

Dr. Andrei Popa is a SPE Distinguished Lecturer for 2013-2014. He has over 14 years of experience applying *Artificial Intelligence* technologies to complex optimization problems in the energy industry. He has published more than two dozen papers on the subject, and most recently co-authored the book, *Artificial Intelligence & Data Mining (AI&DM) Applications in the Exploration and Production Industry*, which is part of SPE’s “Get Up To Speed” Series. Dr. Popa’s service within industry organizations has earned him several awards, including the 2011 SPEI “Management and Information Award”. He is a Technology Advisor for the Applied Reservoir Management team at Chevron’s San Joaquin Valley Business Unit. Since joining Chevron in 2002, he has had multiple assignments, including production and reservoir engineer, special projects lead engineer, subsurface team lead and i-field supervisor. Since 2009 he has served as an Adjunct Professor at University at Southern California where he has taught Applied Reservoir Engineering and Natural Gas Engineering. Additionally, he was invited as a guest lecturer for several courses within the “Smart Oilfield” program. Dr. Popa earned his PhD and MS degree in Petroleum and Natural Gas Engineering from the West Virginia University, and he holds a BS degree in Petroleum and Natural Gas Engineering from the University of Ploiesti.



Event Info

SPEAKER

*Dr. Andrei Popa
Technology Advisor, Reservoir
Management
Chevron Corporation*

LOCATION

*Norris Conference Centers
Houston/Westchase
9990 Richmond Ave.,
South Bldg., Ste. 102
Houston, TX 77042*

EVENT CONTACT

*Rick Morneau
281-315-9395
Rick@MorneauConsulting.com*

MEMBERS

\$35

NON-MEMBERS

\$40

PHDWIN™

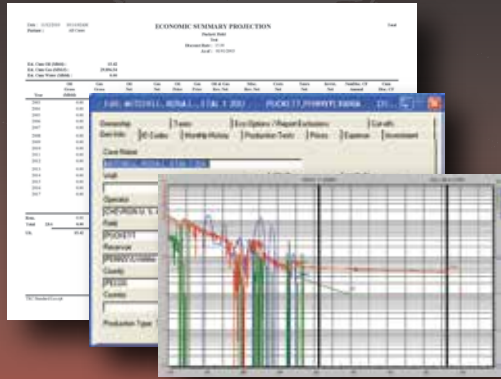
Integrated Economics & Decline Curve Analysis

NOW EVEN MORE POWERFUL WITH

PHDRMS™

Reserves Management System

The *complete solution* for evaluating, managing, and reporting reserves and performance data.



Schedule an **online** presentation
TODAY!

TRC Consultants, LC 888-248-8062 www.phdwin.com



SHAWCOR
TO BE SURE

Increase the reliability of your pipeline project with Flexpipe Systems' proven solutions

Flexpipe Systems' corrosion resistant linepipe products:

- Are available in 2", 3" and 4" ID
- Have rating pressures up to 2,000 psi
- Operate in temperatures up to 180°F (82°C)
- Come in spoolable or reel-less packaging

With over 55 million feet of linepipe and 80,000 fittings installed worldwide, we have the answers for your next pipeline challenge.

ShawCor - when you need to be sure



FLEXPIPE SYSTEMS
A SHAWCOR COMPANY

flexpipesystems.com



SHAWCOR
ENERGY SERVICES • GLOBAL SOLUTIONS

shawcor.com

RPS Knowledge Reservoir

- Consulting
- Technical Projects
- Resourcing
- Unconventional
- Conventional
- Deepwater
- Production Solutions
- Knowledge Management

knowledge-reservoir.com

ELY

Global Hydraulic Fracturing Expertise

281-530-4010

www.elyfrac.com

Cost-Effective Ultra-Large-Diameter PDC Bit Drilling in Deepwater Gulf of Mexico

Ultra-large-diameter Polycrystalline Diamond Compact (PDC) bit drilling is a fast-growing, cost-effective solution in high-tier deepwater drilling operations in the U.S. Gulf of Mexico (GOM) where salt is encountered in the shallow part of the wellbore. Conventional design called for roller cone (RC) (IADC Code 111-115) drill bits on positive displacement motors (PDM) in these ultra-large-diameter intervals. Cost savings on drilling fluid alone, in the form of Rate of Penetration (ROP) gains through the salt interval, has the industry trending to drill these riserless sections with the use of PDC drill bits on Rotary Steerable System (RSS) drilling assemblies.

New robust high-torque-capacity top drives, stronger drill pipe connections, larger diameter RSS tools, and improved mud programs, have all largely contributed to this step change in drilling performance. Additionally, evolved bit and BHA design, efficient operating parameters, improved hydraulics, and vibration prediction modeling, have all aided in the success of these runs.

Although this emerging new trend reduces drilling times and associated cost, experience has shown there are multiple challenges that must be overcome to complete a successful run in a single trip. These challenges vary from well to well and include, but are not limited to: BHA steerability, rig equipment limitations, efficient operating parameters, identification of both sediment and salt formations, hole cleaning and hydraulics, salt creep, drilling fluid displacement, drillpipe torque limitations, stabilization placement, lateral/torsional BHA vibrations, and others.

Piero D'Ambrosio

Piero D'Ambrosio, SPE, is a Drilling Optimization Specialist at BP America. He has over 16 years of experience in drilling applications. He started his career as a field engineer, executing Measurements While Drilling, Logging While Drilling and Directional Drilling projects. He then held several positions within Europe, South East Asia and GoM, where he focused on Directional Drilling, Drilling Engineering and Drilling Optimization. He has a MSE degree in Mechanical Engineering from the Universidad Metropolitana in Caracas, Venezuela. He is also the author of a number of industry papers as well as technical magazine articles.



Event Info

SPEAKER

*Piero D'Ambrosio
Drilling Optimization Specialist
BP America*

LOCATION

*Greenspoint Club
16925 Northchase Drive
Houston, TX 77060*

EVENT CONTACT

*Joe Tison
281-784-7805
wtison@gtweed.com*

MEMBERS

\$35

NON-MEMBERS

\$40



Completion

SYSTEMS, FLUIDS & TOOLS



Specialized tools assure a debris-free completion

Engineered to enhance completion efficiency, M-I SWACO pre-completion wellbore tools provide single-pass cleanups that focus on drilling mud residue removal, wellbore debris elimination, formation damage minimization and NPT reduction.

In addition to specialized tools, we offer an integrated suite of sophisticated planning software and effective displacement fluids that assure a clean, debris-free well during the critical transition of well construction from the drilling to completion phases.

www.miswaco.com/completions



PRODUCTIONER

**USED BY EVERYONE,
FROM THE FIELD PUMPS
ALL THE WAY UP TO MANAGEMENT**

What our customers are saying:
"Productioner is a great data repository and analysis tool. Data entered in the field is immediately available to corporate office."

FEATURES

- FIELD DATA CAPTURE
- ALLOCATIONS
- REPORTS & GRAPHS
- CUSTOMIZABLE TEMPLATES
- FULLY MANAGED SERVICE

Mi4 Corporation
Ph: (713) 401-9584
sales@productioner.com
www.productioner.com

24/7 SUPPORT HOTLINE (866) 421-6665

Deepwater Drilling Training

John Shaughnessy – SPE member – presents learnings from 36 years of experience: equipment, procedures, potential problems. Classes -

- Deepwater Drilling: 5 days
- Accelerated Deepwater Drilling: 2 Days
- HTHP Drilling: 3 Days
- Basic Drilling: 1 Day

Customized and In-House Classes Available
Class details at shaughnessydrillingtraining.com

Reaching Deeper

With the largest fleet of deep, high-pressure coiled tubing, coupled with basin-specific expertise

Going Further

To find solutions to our customers' wellsite challenges, safely and efficiently

That's the IPS Advantage

Integrated Production Services www.ipsadvantage.com

Value of Dispersant for Oil Spill Response

Oil spill response strategies are designed to minimize environmental impacts to the extent possible. Each response option must be evaluated for operational limitations (e.g., sea state), potential effectiveness, environmental impacts of the response option itself, and applicability under various oil spill scenarios (e.g., size and location of the spill), in addition to health and safety of the responders. This presentation provides a review of the primary oil spill response options, a detailed discussion that addresses misperceptions and misunderstandings about dispersants and their use, and a description of dispersant use during the Deepwater Horizon incident.

Tim Nedwood, Ph.D., P.E.

Dr. Nedwed has a BS degree in Chemical Engineering and a MS and PhD in Environmental Engineering. He has worked for ExxonMobil in the Upstream Research Company for 15 years and leads the oil spill response research program. His primary research focus is on advancing dispersant and in-situ burning technology. He is currently an Upstream Senior Technical Professional (STP) Advisor – Oil Spill.

Event Info

SPEAKER

*Tim Nedwed, Ph.D., P.E.
Upstream Senior Technical
Professional (STP) Advisor
ExxonMobil*

LOCATION

*Petroleum Club
800 Bell Street, 43rd floor
Houston, TX 77002*

EVENT CONTACT

*Virginia Jee
vjje@slb.com*

MEMBERS

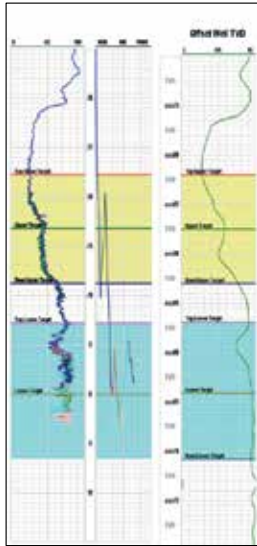
\$40

NON-MEMBERS

\$50

UNEMPLOYED/ STUDENTS

\$10



Geosteering Services

Highly qualified personnel with 20+ years DD & LWD experience

24/7 Real-time monitoring or reports from LAS files

Proprietary software

Geosteering Software

TST interpretation for GR only measurements

Image displays / interpretation of azimuthal GR, resistivity or density measurements

Resistivity modelling / interpretation for LWD propagation resistivity

Software sales, training and technical support

info@geosteering.com

Call 281 573 0500

FRAC SCHOOL

March 24-28, 2014
Pittsburgh, PA

For More Information Visit:
www.petroleumetc.com
or call 832.833.2569

Reserves for Unconventional Reservoirs

March 26-27, 2014
Pittsburgh, PA

WANT TO REACH OVER 16,000 SPE MEMBERS IN THE GREATER HOUSTON AREA?

Advertise your business in the SPE-GCS Newsletter

Connect is printed 12 times per year and contains premium positions for advertisers wanting to reach some of the most influential oil & gas professionals in the world. We are now selling ads for the 2014-2015 program year, and our ad sizes have been updated. Please visit the SPEGCS website for more information regarding ad pricing and specifications.

IF YOU'D LIKE TO PLACE AN AD IN THE SPE-GCS NEWSLETTER OR WEBSITE PLEASE CONTACT:

Pat Stone, Star-Lite Printing, Inc
281-530-9711
starlite1@sbcglobal.net

SMART EARLY KICK DETECTION-
when every second counts...



New innovative solutions for detecting fluid anomalies and reducing well control risk using FADS™

- ✓ Faster – earlier detection than conventional systems
- ✓ Reliable – minimal maintenance, remote operation
- ✓ Easy to Install – minimal modifications to existing rigs
- ✓ Field Proven – in use now. On/offshore applications

mezurx.com



The Independent Leader in Real-Time Solutions

Solutions for Drilling, Petrophysics, and Geological Analysis

- Real-Time & Unstructured Data Management Services
- Drilling & Data Management Consulting
- Active Drilling Surveillance



www.petrolink.com

A Decade Monitoring Shale Gas Plays Using Microseismicity: Advances in the Understanding of Hydraulic Fracturing

Over the past decade, microseismic monitoring has become the most widely used approach to gain an understanding of in-situ reservoir behavior during hydraulic fracture stimulations. From early monitoring performed in the Barnett Shale to current programs in the Horn River and Marcellus formations, we review the evolution of microseismic monitoring from the viewpoint of data collection (single versus multi-well array configurations, utilization of long lateral stimulation wells), data analysis, and the incorporation of microseismic parameters to constrain and validate reservoir models. We conclude with a look at multi-array microseismic results from hydraulic fracture stimulations of various North American shale plays to illustrate how microseismic analysis has aided in the understanding of reservoir characteristics and in turn, helped to plan more effective stimulation programs. We highlight case studies where microseismic monitoring was used to help assess fracture dimensions, stage spacing and well spacing. In addition, we look at how the use of advanced analysis techniques such as seismic moment tensor inversion (SMTI) has helped propel the industry forward and allowed operators to gain a better estimate of the stimulated reservoir volume, the discrete fracture network, and the effective fluid flow by understanding details on individual rupture mechanisms and how these mechanisms change depending on treatment program, local stresses and local geology.

Sheri Bowman

Sheri Bowman is the Manager of Analytics and Technical Sales at ESG Solutions. She holds dual bachelor's degrees from Queen's University in Kingston, Ontario in Applied Math & Mechanical Engineering and Geological Sciences. She joined ESG in 2007 as a geophysicist and has since held positions of Geophysical Analyst, Project Manager and Manager of Data Services before moving to her current role within ESG's Global Energy Services division. She is a registered professional engineer (P.Eng.) and a member of the SPE and SEG. She is an author of eight publications and has presented papers at the CSPG CSEG CWLS Joint Annual Convention (2009), the EAGE Passive Seismic Workshop (2010), the SPE ATCE (2012), the HFTC (2013), among others.

Event Info

SPEAKER

Sheri Bowman
Manager of Analytics and
Technical Sales
ESG Solutions

LOCATION

Greenspoint Club
16925 Northcase Drive
Houston, Texas 77060

EVENT CONTACT

Matthew Strom
281-618-7848
Matthew_Strom@swn.com

MEMBERS

\$35

NON-MEMBERS

\$40

PetroSkills®

February and March sessions in Houston



Introductory & Multi-Discipline

- Basic Petroleum Engineering Practices – BE, Feb 3-7
- Basic Petroleum Technology – BPT, Feb 24-28
- Basic Drilling, Completions and Workover Operations – BDC, March 17-21

Production & Completions

- Completions and Workovers – CAW, Feb 24-28
- Flow Assurance for OffShore Production – FAOP, March 10-14
- Gas Production Engineering – GPO, March 17-21
- Horizontal and Multilateral Wells: Completions and Stimulation – HML2, Feb 17-21
- Production Chemistry – OGPC, March 3-7
- Production Operations 1 – PO1, March 17-28
- Well Stimulation: Practical and Applied – WS, Feb 17-21

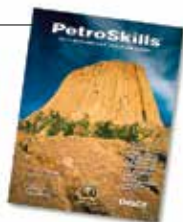
Reservoir Engineering

- Applied Reservoir Engineering – RE, Feb 24-March 7
- Basic Reservoir Engineering – BR, Feb 10-14
- Gas Reservoir Management – GRM, March 10-14
- Reservoir Engineering for Other Disciplines – REO, Feb 24-28
- Reservoir Fluid Properties – RFP, March 3-7
- Reservoir Management – RM, March 17-21
- Well Test Design and Analysis – WTA, March 17-21

Well Construction/Drilling

- Well Construction/Drilling
- Basic Drilling Technology – BDT, Feb 24-28
- Drilling Fluids Technology – DFT, March 17-21
- Drilling Practices – DP, Feb 10-21
- Managing WellSite Operations – MWC, Feb 3-7

For details on these or our other 250 sessions in the Gulf Coast, contact Patty Davis, (832) 426-1203 or patty.davis@petroskills.com, or see details and full selection at www.petroskills.com



Did you get your copy of our 2014 Training Guide? If not, sign up for free at www.petroskills.com/contact



Trying to make sense of the U.S. Water Market?

Water Market Opportunities Report

- Play-by-play market sizes
- Regulatory trends
- Analysis on major players
- Insight into business models

- water acquisition
- water transfer
- water storage
- water treatment
- water hauling
- water disposal



ihs.com



cap-res.com

Maria Bertram, IHS

1-781-301-9438

maria.bertram@ihs.com

Measure Hydrocarbon Stage Production

...No tools, coiled tubing or wireline



Providing Insight Onsite



Tracer technology to evaluate stimulation and well design:

- ◆ Measure actual oil and gas production per stage
- ◆ Results equivalent to 30+ days of production logging
- ◆ Diagnose fracture communications to offset wellbores
- ◆ Confirm toe flow to verify release of all plugs

Knowing what's going on at the bottom keeps you on top.

To learn more call or email:

Tel: 281 291 7769

Email: reservoir@tracerco.com

www.tracerco.com/reservoir-characterisation



Reservoir Technologies



The Human Factor: Process Safety and Culture

The National Commission on the Deepwater Horizon Oil Spill and Offshore Drilling set out the need for sweeping reforms that would accomplish no less than a fundamental transformation of the oil and gas industry's safety culture. In response to this tragic event, the Society of Petroleum Engineers organized a Summit in July 2012 to discuss the safety in the industry. Output from this Summit included the formation of a Technical Section. The Society also agreed to issue Technical Reports, the first of which is entitled, "The Human Factor: Process Safety and Culture".

This presentation explains how the Technical Report was written, presents an overview of the topics covered in the TR, and explains how members can participate in promoting and evolving the concepts presented in the TR. While improvements in the Technical aspects of sensors, intelligent information processing, and alarms has been achieved, it is the human factor that is often the most difficult to change. How can we improve risk recognition and decision-making in safety-critical situations? How can we influence the individual to do the right thing when nobody is looking?

Kenneth E. Arnold

Kenneth E. Arnold has over 45 years of industry experience in facilities design, project management and offshore safety. He served 16 years at Shell Oil Company and founded Paragon Engineering Services in 1980. He is currently Senior Technical Advisor for Worley Parsons and an independent consultant. He was elected to the National Academy of Engineering in 2005.

Mr. Arnold has served on the Board of SPE as Vice President of Finance and as the first Director of Projects, Facilities and Construction. He is on the Editorial Board of "Oil & Gas Facilities" and recently chaired a National Research Council report on measuring the effectiveness of Offshore Safety and Environmental Management Systems.

Mr. Arnold is co-author of two textbooks and over 50 technical articles, and has three times been chosen as an SPE distinguished lecturer. He was named 2003 Houston Engineer of the Year by the Texas Society of Professional Engineers, and received the 2013 Individual Distinguished Achievement Award of the Offshore Technology Conference. Mr. Arnold has taught facilities engineering at the University of Houston and is a recipient of the SPE Public Service Award, the SPE DeGoyler Medal and the SPE Production Engineering Award.

Event Info

SPEAKER

*Kenneth E. (Ken) Arnold
Senior Technical Advisor
Worley Parsons and Independent
Consultant*

LOCATION

*Norris Center at City Center
816 Town & Country Blvd.
Suite 210
Houston, TX 77024*

EVENT CONTACT

*Brad Nelson
832-230-8246
bnelson@maxoilsolutions.com*

MEMBERS

\$35

NON-MEMBERS

\$45

SEE THE ENERGY WITH TGS' DATA INTEGRATION SOLUTION

See and access all of your G&G data with Volant, TGS' geoscience data and application integration solution.

For more information contact TGS at:
Tel: +1 713 860 2100
Email: info@tgs.com



WWW.TGS.COM

© 2013 TGS-NOPEC GEOPHYSICAL COMPANY ASA. ALL RIGHTS RESERVED.



Engineering consulting and training services to maximize the value of your investment in flow assurance

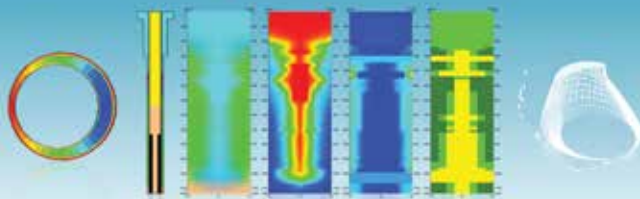
SPT Group has one of the world's leading dedicated flow assurance consulting teams working with multiphase flow technology in wells and pipelines.

Every day we work with the world's leading energy corporations and oil and gas service companies to locally deliver specialist consulting and training services through our global offices and training facilities.

To learn more about the value we offer please visit www.sptgroup.com

SPT GROUP
A Schlumberger Company

CEMPRO⁺ Mud Displacement Software



Pegasus Vertex, Inc.

713-981-5558 | sales@pvisoftware.com | www.pvisoftware.com



HYDRAWELL
- ONE INVENTION AHEAD -

P&A Specialists and
Design Engineering Services

HydraWash™ One-Trip
Cementing System
*Patent Pending

www.hydrawell.com

Email us at info@hydrawell.com

DIRECTIONAL
AND
HORIZONTAL
DRILLING
SPECIALISTS



WWW.NOVADIRECTIONAL.COM



ULTERRA™

When Every Run Counts™



www.ulterra.com

+1 817 293 7555

Forensic Testing

Everybody loves a good mystery, and most of us would like to take a try at being Sherlock Holmes. But what's it like to have to put together the facts after the "crash" to determine what exact part failed and why? Ron Richter will tell you how to read the facts, and what you should do to make sure your testing and evidence is solid as a rock. Find out who is telling the truth, what you should look for, and how you should document for a court of law.

Ron Richter

Ron Richter has over 43 years of laboratory experience in both Nondestructive and Metallurgical/Mechanical testing. For the past 20 years he has owned and operated Houston Metallurgical Laboratory in Houston, Texas.

Prior to Houston Metallurgical Laboratory, Ron has also held several other positions, including:

1. Director of Metals Testing in the Metallurgical Engineering Division of Southwestern Laboratories-Houston office for 15 years with responsibilities in Quality Assurance, Technical and Administrative Guidance in Testing and Marketing.
2. Laboratory Supervisor/Q. A. Manager of an independent testing laboratory, which he helped establish and develop into a full service metals testing facility. Responsibilities there included pricing, scheduling, marketing, and the development of Q. A. Manuals and in-house procedures to qualify under ASME Section III, SPPE OSC-1, ANSI, N45.21, and other applicable regulatory body specifications.
3. Development of training programs for employees and clients.

Mr. Richter has served on Executive and Education Committees. He occasionally holds instructional seminars and classes in association with Rice University, North Harris County College, The American Society of Metals, and The American Welding Society. Currently, Richter serves on the Advisory Board at Lone Star College. He is an active member in The American Society of Metals-Houston Chapter and The American Society of Welding.

Event Info

SPEAKER

Ron Richter
President
Houston Metallurgical Laboratory

LOCATION

Norris Westchase Center
9990 Richmond Ave., Suite 102
Houston, Texas 77042

EVENT CONTACT

Skip Davis
281-359-8556
skdavis@technologyintermediaries.com

MEMBERS

\$35

NON-MEMBERS

\$40

Fracture Modeling, Microseismic Measurements and Production Evaluation: What's the Role of SRV?

The concept of stimulated reservoir volume (SRV) was developed to provide some quantitative measure of stimulation effectiveness in the Barnett shale based on the size of the microseismic “cloud.” SRV is now ubiquitous when discussing well performance and stimulation effectiveness in unconventional reservoirs. However, SRV and similar techniques provide little insight into two critical parameters: hydraulic fracture area and conductivity. Each of these can vary significantly based on geologic conditions and fracture treatment design. The concept of SRV has spawned numerous reservoir engineering models to approximate the production mechanisms associated with complex hydraulic fractures and to facilitate well performance evaluations. However, these reservoir engineering models are often divorced from the fracture mechanics that created the fracture network, a significant limitation when evaluating completion effectiveness. Additionally, the interpretation of the microseismic data and the calculation of SRV are poorly linked to the actual hydraulic fracture geometry and distribution of fracture conductivity. This presentation examines the limitations and potential misapplications of the SRV concept. This work also suggests that simplifying assumptions in many SRV-based rate transient models may lead to estimates of hydraulic fracture length and reservoir permeability that are not well suited for completion optimization. Two case histories are presented that illustrate the limitations of SRV-based well performance evaluations, while detailing the value of a more holistic approach to production evaluation and completion optimization that includes integrated hydraulic fracture modeling and reservoir simulation.

Craig L. Cipolla

As a Senior Completions Engineering Advisor, Craig Cipolla provides hydraulic fracturing and completions support to HESS business units worldwide. His current focus is the development of unconventional resources. Prior to joining HESS, Craig was Chief Engineering Advisor for Schlumberger-Hydraulic Fracture Monitoring and Optimization, focusing on the application of microseismic fracture mapping, complex hydraulic fracture models, and reservoir simulation to improve stimulation designs and field development in unconventional reservoirs. Before joining Schlumberger in 2009, Cipolla's most recent positions were VP of Stimulation Technology for Carbo Ceramics (2008-2009) and VP of Engineering for Pinnacle Technologies (1996-2008). He also held positions with Union Pacific Resources, CER Corporation, and Dresser Titan. Cipolla has co-authored over 65 technical papers and was an SPE Distinguished Lecturer on hydraulic fracturing in 2005-2006. Mr. Cipolla was the recipient of the prestigious SPE International Completions Optimization and Technology Award in 2013. Cipolla holds undergraduate degrees in Engineering and Chemistry from the University of Nevada-Las Vegas and a Master's Degree in Petroleum Engineering from the University of Houston.



Event Info

SPONSORED BY
Schlumberger

SPEAKER
Craig L. Cipolla
Senior Completions
Engineering Advisor
Hess

LOCATION
Sullivan's Steakhouse
4608 Westheimer Rd
Houston, TX 77027

EVENT CONTACT
Miles Palke
713-750-5490
miles_palke@ryderscott.com

MEMBERS
\$35 Pre-Registered / \$45 Walk-in

NON-MEMBERS
\$40 Pre-Registered / \$45 Walk-in

Better Modeling of Hydraulically Fractured Horizontal Wells in Unconventional Reservoirs

The use of horizontal wells and hydraulic fracture completion practices has become the norm today, particularly in unconventional reservoirs. These wells and their completions present unique challenges to engineers' efforts to optimize and reliably forecast well performance. Where to drill wells is generally not the issue. The primary decisions are orientation of the lateral(s), length of the lateral(s), vertical placement of the lateral(s) in the formation, number and size of the hydraulic fracture treatments and well spacing. All of these operational decisions revolve around the stimulated rock volume (SRV) created by the hydraulic fracture treatment. Proper understanding of the SRV creation and its interaction with the reservoir matrix and natural fracture systems is paramount. The geometry as well as the extent and complexity of fractures within the SRV impact the fracture surface area available for interaction with the matrix.

Reservoir simulation, if properly employed, is the best tool available for addressing these issues. This presentation will discuss a new approach to evaluating hydraulically fractured horizontal wells. This approach utilizes assisted history matching software and a commercial, dual porosity reservoir simulator with special geomechanical modifications. Many operational decisions cannot be properly addressed with statistical methods or "conventional" modeling approaches. This new modeling approach provides knowledge about the flow behavior of the hydraulic fracturing process and the reservoir's natural fracture/matrix system for the well(s) being studied. Unlike the conventional approaches, this information can then be used to investigate operational decisions for future wells planned in the same reservoir.

Examples of actual wells studied in the Bakken, Three Forks, Eagle Ford and Wolfcamp reservoirs will be shown.

Bill Savage

Bill Savage is Director of NITEC LLC., a Denver-based reservoir engineering consultancy and developer of reservoir simulation-based technologies for the industry. Prior to joining NITEC in 2003, he held various senior management positions with Scientific Software-Intercomp and Scientific Software Corp. in the U.S. and overseas. Bill has been conducting and managing domestic and international reservoir engineering and simulation studies for over 45 years. He holds a BS in Petroleum Engineering from the University of Tulsa.



Event Info

SPEAKER

Bill Savage
Director
NITEC LLC.

LOCATION

Sullivan's Steakhouse
4608 Westheimer Rd
Houston, TX 77027

EVENT CONTACT

Miles Palke
713-750-5490
miles_palke@ryderscott.com

MEMBERS

\$35 Pre-Registered / \$45 Walk-in

NON-MEMBERS

\$40 Pre-Registered / \$45 Walk-in

PATENTED
proNova™ by TDE

DRILLING PERFORMANCE

CREW PERFORMANCE MEASUREMENTS

AUTOMATIC OPERATIONS DETECTION

INVISIBLE LOST TIME DETECTION

281.755.7595
www.pronova-tde.com

You drop it in the wellbore, we catch it!

Introducing ...
OPEN HOLE NET™

Protects the wellbore from metal dropped into and coming out of the wellbore!

- Installs over any API standard size annular preventer.
- Roughnecks rig it up; no operator needed.
- No power source needed.
- Operates 24/7/365. Never rests.
- Complete stainless steel construction.
- M.A.D.E.™ (Made, Assembled, Designed, Engineered) in USA.

Patent Pending

Visit Us at
 SPE/IADC 2014
 Fort Worth, TX
 March 4-6, 2014
 Booth #801

5D Oilfield Magnetics™

Premier Magnetic Applications in Drilling Completion and Production Operations
 sales@5doilfieldmagnetics.com • 337.466.7400

Standard Drop Test Set

www.5doilfieldmagnetics.com

GATE
 Deepwater Oil & Gas Engineering

Deeper and deeper water.
 Larger projects.
 More complex design challenges.
 More people with highly specialized skills.
 Fewer people who see the big picture.

GATE's full-service team takes a larger, systems view of the interactions and intricacies of the project as a whole. This enables us to develop solutions that cross many different disciplines and boundaries.

The result: smoother facility startups, higher up-time and reliability, less operating headaches and improved whole-life value for existing developments.

Materials & Corrosion
 Subsea Engineering
 Offshore Risk Management
 Commissioning & Initial Startup
 Chemical Systems Engineering
 Water Injection
 Flow Assurance

www.gateinc.com

Dyna-Drill
 Manufacturers of
 Drilling Motor Components

- Mud Motor Power Sections (Sizes: 2 7/8" to 11 1/2")
- Coil Tubing Power Sections (Sizes: 1 11/16" to 3 3/4")
- Matrix-3® Coated Bearings
- Precision Machining

www.dyna-drill.com

Power That Lasts™

SUMMIT®
 ESP

Reach for the SUMMIT in ESP solutions

EASTERN AREA 918.392.7820
 SOUTHERN AREA 432.563.7040
 WESTERN AREA 307.764.6346

www.summitesp.com

WED
 March 19

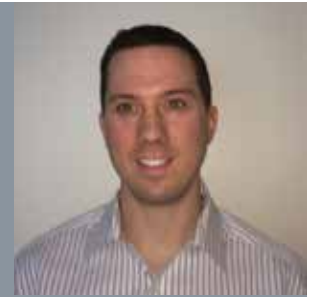
11:30 AM TO 1:00 PM

Completion Diagnostic Trends in the Marcellus Shale

This presentation will focus on completion diagnostic trends in the Marcellus Shale. Data visualizations and completion statistics will provide insights into the key questions in the optimization process specifically related to wellbore trajectory, near-wellbore proppant placement and fracture stage spacing. Lessons learned from hydrocarbon tracing in the Appalachian Basin will also be discussed.

Jeff Pechiney

Jeff Pechiney has spent the past seven years working in the oil and gas industry. He has focused on hydraulic fracturing design and execution as a field engineer for Schlumberger in the Rockies, Williston Basin and the Appalachian Basin. He has been with ProTechnics for the past two years as an account manager and currently as a region engineering advisor working to optimize completion designs. Pechiney has a BS degree in mechanical engineering from Purdue and is currently working on an MBA at Carnegie Mellon.



Event Info

SPEAKER

Jeff Pechiney
 Region Engineering Advisor -
 Appalachia
 ProTechnics Division of
 Core Laboratories

LOCATION

Norris Westchase Center
 9990 Richmond Ave., Suite 102
 Houston, Texas 77042

EVENT CONTACT

Andrea Hersey
 281-646-2805
andrea.hersey@momentive.com

MEMBERS

\$40

NON-MEMBERS/WALK-INS

\$45

Directionally challenged?

If your directional drilling program is more challenging than you expected, maybe you need a new directional driller. Maybe you need Ryan Directional Services, Inc.

Ryan has experience in virtually every important oil and gas shale play. We know the potential roadblocks and how to address them before they cost you money. And that takes drilling to a new level of efficiency.

Call Ryan at 281.443.1414 and see how our directional drilling program will change your experience from challenging to rewarding.

www.nabors.com



Water/Wastewater short course: Issues, Challenges, Solutions, New Technologies



April 15-16, 2014

Texas A&M University
College Station, Texas

Course includes equipment demonstration, filtration trailer showcase, and analytical trailer showcase

Webinar Option Available

Online registration: www.gpri.org
Contact: **Carl Vavra**, 979.862.1617



**GLOBAL PETROLEUM
RESEARCH INSTITUTE**
TEXAS A&M ENGINEERING EXPERIMENT STATION

ARE YOU FEELING THE EFFECTS OF THE **Great Crew Change?**

*Replenish
your company men
with competent
personnel...*



Signa's Wellsite Foreman Intern Training (WFIT) program does all the groundwork to provide operators with qualified company men. We screen, select and train optimal candidates, evaluating each of them throughout to ensure they're tailor-made for your company.

- Drilling or Completion
- Establish core skillsets
- Instill good habits
- Get quicker results
- Monitor progress



The WFIT program is a comprehensive 8-mo. training class utilized by large and small operators (As featured in *Offshore magazine*).

Signa Engineering Corp.
Houston, TX USA
www.signaengineering.com

Contact: Dave Roseland
281.774.1026
droseland@signa.net

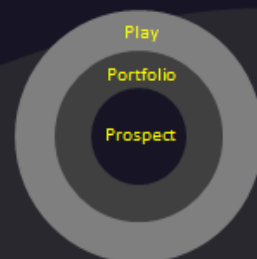
Rose & Associates

Courses Consulting Software
Improving E & P Effectiveness

**Unconventional Resource
Valuation Course (3 to 5 days)**

UCRA Software
To model, value and risk
drilling in resource plays

lisaward@roseassoc.com



- New drilling and completion technologies
- Custom-engineered solutions
- Fit-for-purpose manufacturing
- Faster response.

www.tiwtools.com
ENGINEERED TO FIT



TIW CORPORATION A Pearce Industries Company

THE ROLE OF RENEWABLE ENERGY AT AN INTEGRATED OIL COMPANY

Worldwide energy consumption is projected to increase by more than 40 percent by 2035. The growing demand is fueled by a population that is predicted to increase 25 percent in the next 20 years, with most of that growth in countries with emerging economies. At Chevron, we recognize the world needs all the energy we can develop, in many potential forms. That's why we're investing in a broad portfolio of energy resources – developing not only conventional sources of oil and gas, but also investing in renewables and the next generation of energy sources. Chevron Global Power Company President Hugh Connett will review Chevron's renewable assets, and discuss how Chevron is working to integrate renewable power into our broad energy portfolio.

Hugh Connett

Hugh Connett is President of Chevron Global Power Company (CGP) and a Vice President of Chevron Gas and Midstream. He is responsible for managing Chevron's existing portfolio of commercial power plants and projects in the U.S., Asia, Middle East and Europe, as well as identifying new growth opportunities for power worldwide. The CGP portfolio currently includes nine highly efficient gas-fired cogeneration and combined cycle power facilities and Chevron's first wholly owned wind farm on the site of a former refinery in Wyoming. CGP provides commercial, engineering and operational support to Chevron's worldwide power operations. CGP headquarters are in Houston, Texas.

Prior to being named to his current role in 2011, Connett served as Vice President of Strategy, Technology and Commercial Integration Center of Excellence & Business Services with Chevron Downstream & Chemicals. In this capacity, he was responsible for the oversight of the processes and associated business systems architecture for the Value Chain Optimization and Trading and Risk Management functions across Global Downstream operations. Connett joined Texaco in 1996, managing the company's gas supply and midstream assets with the Texaco Star Center, and has served in various commercial and project management roles with Global Supply and Trading, Bridgeline Joint Venture, Global Gas and Downstream Organizations. He previously served as a Reservoir Engineer with Mitchell Energy. Connett graduated from Pennsylvania State University with degrees in Petroleum Engineering and Liberal Arts in 1982.

Event Info

SPEAKER

Hugh Connett
Vice President of Chevron Global Power Company
Chevron

LOCATION

The Wedge Tower
1415 Louisiana St,
39th Floor Suite 3900
Houston, TX 77002

EVENT CONTACT

Anne Branson
713-372-2002
annebranson@chevron.com

COST

\$20 Members
\$30 Non-Members

Measured Solutions from
The Completion Diagnostics Company

Annular Pack Quality?

With ProTechnics' memory gamma density imaging services you can directly measure:

- Annular Pack Quality
- Top of Annular Pack
- Production Allocation
- Long-Interval Pack Coverage
- Stage Production Contribution
- Horizontal Gravel-Pack Quality



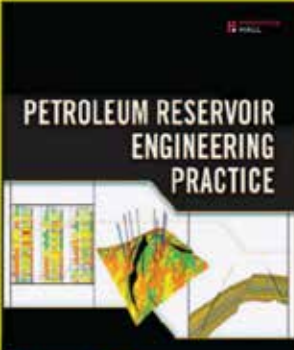
ProTechnics
COMPLETION DIAGNOSTICS
a division of Core Laboratories



Learn more at www.corelab.com/protechnics or call us at 713-328-2320

The Up-To-Date,
Practical Guide to Modern
Petroleum Reservoir
Engineering by
DR. NNAEMEKA EZEKWE

Available from Amazon.com,
informIT.com, and other
fine resellers.



PRENTICE HALL | **informIT.com**

Technical Documentation Development and Management Consulting



Documentation help = more available engineering time

- Technical Writing**
 - + Develop content
 - + Multiple authors – consistent voice
 - + Formatting, grammar & readability
 - + Develop / edit graphics
- Management Consulting**
 - + Documentation & project management
 - + Procedures, processes & workflow
 - + RFPs, RFQs & contract management

*- Quick turnaround
- On-demand resource
- Turnkey publication*

ZAETRIC®
www.zaetric.com

Integrated Energy Services ,Inc.

Robert Barba
Petrophysicist

Log Analysis
Completion Optimization

500 N. Capital of TX Hwy
Building 4-150
Austin, TX 78746
C: (713) 823-8602
F: (713) 583-9400
RBarba75@gmail.com

www.integrated-energy-services.com

2013 PROFESSIONAL ENGINEERING EXAM RESULTS FOR PETROLEUM ENGINEERING

First Timers 75% | Second+ Timers 53%
National Pass Rate 70% Est

Look next march for Winrock PE Course Results

PE Exam Application Deadline Date: July 1, 2014
Next Petroleum PE Exam Date: October 24, 2014

P: 405-822-6761 | E: bingwines@cox.net
winrockengineeringinc.com



PPI
Technology
Services LLC

Your Total Project Management & Well Site Solution

ppitech.net (713) 464-2200

VIKING

ENGINEERING, L.C.

- PETROLEUM CONSULTING
- HPHT WELL DESIGN
- APB ANALYSIS
- PROJECT MANAGEMENT
- FAILURE ANALYSIS
- TRAINING

CRITICAL WELL ENGINEERING CONSULTING SERVICES

VIKING'S TEAM OF HIGHLY TRAINED PETROLEUM PROFESSIONALS LEND THEIR EXPERIENCE TO CREATIVE WELL DESIGNS.

WE CAN HELP PLAN AND EXECUTE YOUR TOUGH WELLS.

VISIT OUR WEBSITE: WWW.VIKINGENG.NET
OR CALL: (281) 870-8455 IN HOUSTON

SOCIETY OF PETROLEUM ENGINEERS GULF COAST SECTION EXECUTIVE CLUB WINNERS

Congratulations To Our Winners!

PLATINUM MEMBER

DiXuan Lin
Wins a \$100 Gift Card



GOLD MEMBER

Yogesh Saini
Wins a \$75 Gift Card



SILVER MEMBER

Patrick Davies
Wins a \$50 Gift Card



**REPRESENT YOUR
COMPANY AND SCHOOL**

The Executive Club is expanding to help recognize the companies and universities that support our members.

HOW TO CONNECT

Email Chew Yeong Leong (Chad) at cleong4@slb.com or visit www.spegcs.org/executive-club/ to find out more about SPE-GCS YP Executive Club!

Are you looking to get involved with the SPE-GCS Young Professionals Board?

*Come out to our monthly Board Meetings,
Networking Events, Luncheons, and Community
Service Events to get to know us better!
Applications for the 2014-2015 Board will
be released in late March.*

QUESTIONS

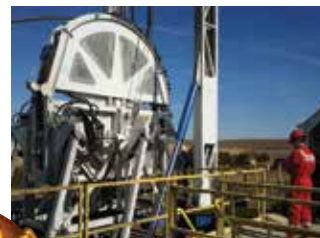
Pavitra Timbalia
Pavitra.a.timbalia@exxonmobil.com

WWW.CoiledTubingDrilling.com

New Directional Coiled Tubing Drilling Capability. At your service.

We can help you recover more production from existing wells with underbalanced, directional and horizontal drilling.

Contact us to discuss how Coiled Tubing Drilling can be used to your advantage.



AnTech®



We can work with your existing coil provider.

sales@coiledtubingdrilling.com

713-703-0608

10030 Fairbanks North, Houston, Texas 77064

www.intertek.com



Upstream Services

6700 Portwest Drive | Houston, TX 77024

713.479.8400

westportservices@intertek.com

Delivering Testing Results in Every Phase

Production Testing Services

- Well Testing
- Well Cleanup
- Frac Flow Back
- Drillstem Testing
- Subsea Test Trees
- Extended Well Tests
- Early Production Facilities



© TETRA and the TETRA logo are registered trademarks of TETRA Technologies, Inc. All rights reserved.

tetrathec.com

COMMITTEE GOLF

MON
April 14

41ST ANNUAL SPE GULF COAST SECTION GOLF TOURNAMENT

MORNING & AFTERNOON

This Gulf Coast Section event is an important part of fundraising for our Scholarship Fund, which helps send several potential clients or co-workers to college. These scholarships are even more important now with an unprecedented increase in demand for engineers in all disciplines.

Come and join us at the biggest and best tournament in Houston!

Great golf, great prizes, great food!

REGISTRATION

<http://www.cvent.com/d/x4qlnf>

WHERE

*Kingwood Country Club
1700 Lake Kingwood
Kingwood, Texas 77339*

*Deerwood Country Club
1717 Forest Garden Drive
Kingwood, Texas 77345*

QUESTIONS

cconway@kb-machine.com



WANT TO REACH OVER 16,000 SPE MEMBERS IN THE GREATER HOUSTON AREA?

Advertise your business in the SPE-GCS Newsletter

Connect is printed 12 times per year and contains premium positions for advertisers wanting to reach some of the most influential oil & gas professionals in the world. We are now selling ads for the 2014-2015 program year, and our ad sizes have been updated. Please visit the SPEGCS website for more information regarding ad pricing and specifications.

IF YOU'D LIKE TO PLACE AN AD IN THE SPE-GCS NEWSLETTER OR WEBSITE PLEASE CONTACT:

Pat Stone, Star-Lite Printing, Inc
281-530-9711
starlite1@sbcglobal.net



Intellectual Property Attorneys

PATENTS

- Applications
- Patent Office Processes
- Litigation – Expert Witness

TRADE SECRETS

- Prepare/Develop Company Procedures
- Prepare/Evaluate Agreements
- Litigation - Expert Witness

TRADEMARKS

- Research & Applications

WWW.COOKE-LAW.COM

Phone: (936) 441-0102

Claude Cooke, SPE

Serving the Gulf Coast Region

Slider

Automated Directional Drilling

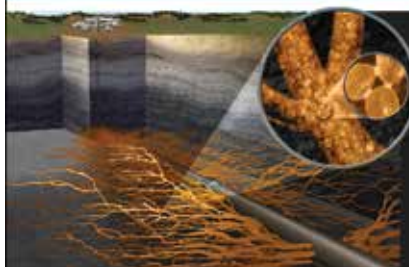
IMPROVE YOUR HORIZONTALS



- ON-BOTTOM TOOL FACE ORIENTATION
- INCREASED MOTOR LIFE
- INCREASED ROP & HORIZONTAL REACH CAPABILITY
- ELIMINATES ORIENTATION TIME LOSSES

slb.com/Slider

Innovative Proppant Technology



OilPlus™
PROPPANTS

New OilPlus™ Proppants
Provide Enhanced Oil
Recovery for Your Well.

E-mail us at oilfield@momentive.com.

MOMENTIVE

VIBRATION TECHNOLOGY
LEADING THE INDUSTRY IN STUCK PIPE RECOVERY
INNOVATIVE TECHNOLOGY FOR REMOVING STUCK TUBULARS

- + WORKOVER
- + COMPLETIONS
- + DRILLING



www.layne.com

Vibration Technology

EVENT RECAP

We want to thank the Young Professionals and the Northside & Reservoir Study Groups for submitting their photos this month. If you would like your group to be recognized in the Connect with your wonderful photos, please send your photos by the 25th of every month to the Connect editor at editor@spegs.org.



SPE GULF COAST SECTION DIRECTORY

Your guide to your organization leaders

Officers

CHAIR

Mike Strathman, The Trinity Group, Inc.
713-614-6227
mike-strathman@att.net

VICE-CHAIR

Jeanne Perdue, Occidental Oil and Gas
713-215-7348
jeanne_perdue@oxy.com

SECRETARY

David Flores, Consultant
281-381-5828
david_p_flores@yahoo.com

TREASURER

Robert Bruant, Jr.,
Pioneer Natural Resources Company
972-969-4573
robert.bruant@pxd.com

VICE TREASURER

Lucy King, Miller and Lents, Ltd.
713-308-0343
lking@millerandlents.com

CAREER MANAGEMENT

Patty Davis, PetroSkills
832-426-1203
Patty.Davis@petroskills.com

COMMUNICATIONS

Valerie Walker, Anadarko
832-636-3196
Valerie.walker@anadarko.com

COMMUNITY SERVICES

Amy Timmons, Weatherford
713-836-6563
amy.timmons@weatherford.com

EDUCATION

Gabrielle Guerre, Ryder Scott
713-750-5491
gabrielle_guerre@ryderscott.com

MEMBERSHIP

Xuan (Sun) VandeBerg Harris, Consultant
832-444-5143
xuan.harris@gmail.com

PAST CHAIR

Steve Baumgartner, Marathon Oil Corp.
713-296-3190
sbaumgartner@marathonoil.com

PROGRAMS

David Tumino, Murphy Oil Corp.
281-717-5123
tuminospe@hal-pc.org

SOCIAL ACTIVITIES

Jim Sheridan, Baker Hughes
281-432-9209
jim.sheridan@bakerhughes.com

TECHNOLOGY TRANSFER

Carol Piovesan, APO Offshore
281-282-9291
cpiovesan@apooffshore.com

YOUNG PROFESSIONALS

Simeon Eburi, Chevron
simeon.eburi@chevron.com
806-544-0829

DIRECTOR 2012-14

Alex McCoy, Occidental Oil and Gas
713-366-5653
alexander_mccoy@oxy.com

Kevin Renfro, Anadarko

832-636-8613
kevin.renfro@anadarko.com

Wolfgang Deeg, Shell

281-544-8279
wjfdeeg@spemail.org

DIRECTOR 2013-15

Trey Shaffer, ERM
281-600-1016
Trey.Shaffer@erm.com

John Lee, UH

713-743-4877
wjlee3@uh.edu

Deepak Gala, Shell

281-544-2181
deepak.gala@shell.com

SPE GULF COAST NORTH AMERICA REGIONAL DIRECTOR

Bryant Muller, Halliburton
281-818-5522
Bryant.Mueller@halliburton.com

Committee Chairs

AWARDS

James Rodgerson, BP
281-221-4085
james.rodgerson@bp.com

CONTINUING EDUCATION

Nii Ahele Nunoo, NOV
507-304 5416
Nii.Nunoo@nov.com

ESP WORKSHOP

Noel Putscher, Newfield
281-674-2871
nputscher@newfield.com

GOLF

Cameron Conway, KB Machine
281-217-0660
cconway@kb-machine.com

INTERNSHIPS

Gabrielle Guerre, Ryder Scott
713-750-5491
gabrielle_guerre@ryderscott.com

NEWSLETTER

John Jackson, CCR Technologies
713-998-3121
editor@spgcs.org

SCHOLARSHIP

Tanhee Galindo, Consultant
832-693-9010
gcs-scholarship@spemail.org

SPORTING CLAYS

Paul Conover, NOV
713-346-7482
paul.conover@natoil.com

TECHNOLOGY TRANSFER

Carol Piovesan, APO Offshore
949-232-6353
cpiovesan@apooffshore.com

TENNIS

James Jackson, Halliburton
713-366-5704
james.jackson@halliburton.com

WEB TECHNOLOGY

Shivkumar Patil, Aker Solutions
713-369-5352
Shivkumar.Patil@akersolutions.com

SECTION MANAGER

Kathy MacLennan, SPE-GCS
713-779-9595 x 813
kmaclennan@spe.org

Study Group Chairs

BUSINESS DEVELOPMENT

Steve Mullican, Grenadier Energy Partners
281-907-4120
smullican@grenadierenergy.com

COMPLETIONS & PRODUCTION

Mark Chapman, CARBO Ceramics
281-921-6522
mark.chapman@carboceramics.com

DIGITAL ENERGY

Rick Morneau, Morneau Consulting
281-315-9395
rickmorneau@outlook.com

DRILLING

Joe Tison, Greene Tweed
281-784-7805
wtison@gtweed.com

GENERAL MEETING

Raja Chakraborty, Shell
281-544-2148
Raja.Chakraborty@shell.com

HEALTH, SAFETY, SECURITY, ENVIRONMENT AND SOCIAL RESPONSIBILITY

Trey Shaffer, ERM
281-600-1016
trey.shaffer@erm.com

INTERNATIONAL

Owen Jones, ExxonMobil
Development Company
832-624-2019
owen.jones@exxonmobil.com

NORTHSIDE

Naval Goel
650-307-7267
navalgoel@hotmail.com

PERMIAN BASIN

Amy Timmons, Weatherford
713-836-6563
amy.timmons@weatherford.com

PETRO-TECH

Marci Nickerson, Consultant
713-446-3400
mnick52@sbcglobal.net

PROJECTS, FACILITIES, CONSTR.

Chris Shaw, Shell
281-544-6796
C.Shaw@shell.com

RESEARCH & DEVELOPMENT

Skip Davis, Technology Intermediaries
281-359-8556
skdavis@technologyintermediaries.com

RESERVOIR

Sunil Lakshminarayanan, Weatherford
713-849-1861
sunil.lakshminarayanan@weatherford.com

WATER & WASTE MANAGEMENT

Kira Jones, Momenive
281-646-2827
kira.jones@momenive.com

WESTSIDE

Andrea Hersey, Momenive
281-646-2805
andrea.hersey@momenive.com

CONNECT

Information

Newsletter Committee

CHAIRMAN | John Jackson
editor@spgcs.org

AD SALES | Pat Stone
starlite1@sbcglobal.net

BOARD LIAISON | Valerie Martone

NEWSLETTER DESIGN | DesignGood
designgood.com
designgoodstudio.com

SPE Houston Office

GULF COAST SECTION MANAGER

Kathy MacLennan | kmaclellan@spe.org

GCS ADMINISTRATIVE ASSISTANT

Sharon Harris | sharris@spe.org

HOURS & LOCATION

10777 Westheimer Road, Suite 1075

Houston, Texas 77042

P 713-779-9595

F 713-779-4216

Monday - Friday 8:30 a.m. to 5:00 p.m.

Photo Submissions

We are looking for member photos to feature on the cover of upcoming issues! Photos must be at least 9" by 12" at 300 DPI. Email your high resolution picture submissions to:
editor@spgcs.org

Change of Address

To report a change of address contact:

Society of Petroleum Engineers

Member Services Dept.

P.O. Box 833836

Richardson, Texas 75083-3836

1.800.456.6863

service@spe.org

Contact

For comments, contributions, or delivery problems, contact editor@spgcs.org.

ADVERTISE YOUR BUSINESS IN THE SPE-GCS NEWSLETTER OR ON THE SPE-GCS WEBSITE

Connect is printed 12 times per year and contains premium positions for advertisers wanting to reach some of the most influential oil & gas professionals in the world. We are now selling ads for the 2014-2015 program year, and our ad sizes have been updated. Please visit the SPEGCS website for more information regarding ad pricing and specifications.

FOR INFORMATION ON ADVERTISING IN THIS NEWSLETTER OR ON THE SPE-GCS WEBSITE, PLEASE CONTACT:

Pat Stone, Star-Lite Printing, Inc

281-530-9711

starlite1@sbcglobal.net

Why can Weatherford deliver more real time data at the wellsite than any other mudlogging company?

Tim has cabin fever.



**EXCELLENCE
FROM THE
GROUND UP™**

Our Global Operations Manager for Surface Logging Systems, Tim, is all smiles these days. That's because he and his team recently designed a new state-of-the-art mudlogging cabin. The spacious interior makes room for more laboratory services at the wellsite. Now exploration companies have access to more data in real time, so they can make better decisions faster. It's one more way Weatherford Mudlogging is committed to Excellence from the Ground Up.

SURFACE LOGGING SYSTEMS
www.weatherford.com/surfacelogging
mudlogging.services@weatherford.com



NON-PROFIT ORGANIZATION
U.S. POSTAGE PAID
PERMIT NO. 6476
HOUSTON, TX

SOCIETY OF PETROLEUM ENGINEERS
GULF COAST SECTION

10777 Westheimer Road
Suite 1075
Houston, TX 77042

CALENDAR

March 2014

Sunday	Monday	Tuesday	Wednesday	Thursday	Friday	Saturday
				Research & Development Reservoir		
2	3	4	5	6	7	8
		Northside	Young Professionals	Board Of Directors General Meeting		
9	10	11	12	13	14	15
			Projects Facilities & Construction Digital Energy	General Meeting YP Networking Social		
16	17	18	Westside Drilling	19	20	21
		HSSE-SR	Completions & Production	Reservoir		
23	24	25	26	27	28	29
			Business Development			
30	31	1	2			