



Gulf Coast Section

JANUARY
2014

CONNECT

SPE GULF COAST SECTION NEWSLETTER

Water Management for
Sustainable Development
of US Unconventionals –
Practices, Challenges,
Trends and Solutions

GENERAL MEETING P. 9

ConocoPhillips:
Recognizing Value
by Unleashing the
Independent E&P

BUSINESS DEVELOPMENT P. 11

UNCONVENTIONAL
RESERVOIR
DEVELOPMENT –
THE ECONOMICS
OF FRACTURING

COMPLETIONS & PRODUCTION P. 13

OVERVIEW OF
TEXAS RAIL ROAD
COMMISSION
REGULATIONS

PERMIAN BASIN P. 19

SPEGCS.ORG



CHAIRMAN'S CORNER

MIKE STRATHMAN
2013-2014 SPE-GCS Chair

Welcome to 2014! Happy New Year and all the best to you and your family.

Innovation continues in the SPE-GCS. The Project, Facilities & Construction Study Group is trying a new format to better serve the changing demographics of the Section. PF&C is a very important sector in our industry. The new format makes it easier to share information and technology, improves attendance, and allows for better content to be delivered.

The PF&C Study Group format has been luncheon speakers with a Q&A session. Attendance has not been as robust as in earlier years in part because of a demographic shift; core attendees are retiring and younger engineers have less flexibility to attend in midday. In addition, there are more challenges to get speakers to obtain internal permissions and overcome legal reviews in order to share their experiences. Last year PF&C experimented with a slightly different format, the Summer Series. The topic of "Subsea" was selected in advance along with all of the speakers (four consecutive week) over the summer. Events were held late in the afternoon so as not to disrupt the flow of the day. The new format allowed for a slightly more in-depth presentation and a longer Q&A session. It also drew in good crowds (exceeding 50), and speakers were given the time to work events into their schedules and get legal approvals. Sponsors have also stepped up, which lowers our cost structure.

As a result of the success, the format will be repeated this year in March and July. The PF&C remains open to ad hoc monthly events, so if you have a topic and speaker, please contact the PF&C leadership. PF&C has hosted two such ad hoc events this year in September and November. There is more on the new format and content for the March event on the website calendar. We welcome your thoughts on the new approach. Thanks to the PF&C leaders, Chris Shaw and Bob Chin, and their team for the innovation.

WATER & WASTE MANAGEMENT (W&WM) STUDY GROUP – NEW LEADERSHIP

Kira Jones has agreed to Chair the W&WM Study Group. This is an important topic for petroleum operations. The current mission is to disseminate information and be a resource for best practices for drilling and production waste management. Her leadership is welcome. If you want to help, she is currently building her team. Please go to the website <http://www.spegecs.org/> to contact Kira and offer your help.

The SPE-GCS Nominating Committee of the Board of Directors has nominated and supports the following individuals to serve on the SPE International Board of Directors:

- James Pappas, P.E. with Research Partnership to Secure Energy for America (RPSEA); nominee for 2016 SPEI President
- Trey Shaffer with Environmental Resources Management (ERM); nominee for Technical Director, Health Safety Security Environment and Social Responsibility
- Carol Piovesan with APO Offshore; nominee for Technical Director, Management and Information
- Steve McCants with OXY; nominee for Director At-Large

Thanks to the committee for the great list of candidates. We wish them all the best of luck.

THOUGHT YOU SHOULD KNOW...

The industry wants your graduating son or daughter! As an organization, we want to encourage students to consider what many of us have found to be an exciting career. To that end, the Gulf Coast Section has a scholarship program to recognize educational accomplishment and provide support through college leading to an engineering or science degree. The application deadline for the Fall semester is closing in and ends on February 12, 2014.

Please go to the website to obtain details. <http://www.spegecs.org/committees/scholarship-internship/>

SPE International also provides scholarships so please check them out as well. <http://www.spe.org/scholarships/index.php>

Good luck to all graduating students.

We welcome your comments and ideas to make the Gulf Coast Section better. Please contact me at mike-strathman@att.net

FEATURES

January 2014

STUDY GROUPS

GENERAL MEETING
1/9/2014

Water Management for Sustainable Development of US Unconventionals – Practices, Challenges, Trends and Solutions

P. 9

NORTHSIDE
1/14/2014

Horizontal Well Fracture Initiation and Extension from Cemented Cased Wells

P. 17

PETRO-TECH
1/14/2014

PHDWin – Simple Solutions for Evaluating Complex Economics

P. 21

WESTSIDE
1/15/2014

Concepts of Fracturing Flowback: Controls, Analysis and Benefits

P. 27

COMPLETIONS & PRODUCTION
1/22/2014

Unconventional Reservoir Development – The Economics of Fracturing

P. 13

RESERVOIR
1/23/2014

Integration of Subsurface Modeling and Surface Networks to Develop CO₂ Source Field

P. 25

PERMIAN BASIN
1/28/2014

Overview of Texas Rail Road Commission Regulations

P. 19

HSSE-SR
1/28/2014

Global Process Safety Reporting Progress

P. 15

BUSINESS DEVELOPMENT
1/29/2014

ConocoPhillips: Recognizing Value by Unleashing the Independent E&P

P. 11

RESEARCH & DEVELOPMENT
2014 Events

P. 23

COMMITTEES

AUXILIARY
Book Club

1/10/2014

YOUNG PROFESSIONALS
Executive Club Winners

2013 SPE-GCS YP Salary Survey

P. 29

MORE

EVENT RECAP

General Meeting, Reservoir, and the Business Development Study Groups

P. 33



P. 31

EDUCATION

2014-2015 SPE-GCS Scholarship

IN EVERY ISSUE

SPE-GCS MEMBERSHIP REPORT
November 2013

VOLUNTEER SPOTLIGHT
Simeon Eburi

P. 5

THEN & NOW
Buddy Woodroof

P. 6

SPE GULF COAST SECTION
DIRECTORY

P. 34

THU
January
9

7:30 AM TO 10:30 AM

BOARD OF DIRECTORS
MEETING

LOCATION

SPE Houston Office
10777 Westheimer Rd.
Suite 1075
Houston, TX 77042

EVENT CONTACT

Sharon Harris
713-457-6821 EXT. 821
713-779-4216 FAX
sharris@spe.org

Trust your parachute?



one reliable solution. Entero[®] MOSAIC[™]

With over ten years of continuous progress and innovation for corporate reserves and evaluations, Mosaic has the product stability and client responsiveness that E&P companies have come to expect. Discover what it's like to have a system and team you can depend on to achieve your end goal.

- Better Productivity
- Higher Efficiency
- Faster Speed
- Trusted Information

Expect More. Accomplish More. Learn More at www.entero.com/mosaic

entero[®]
energy software

SPE-GCS MEMBERSHIP REPORT

November 2013

NOVEMBER 2013

Total: 16,322

YP: 3,789

OCTOBER 2013

Total: 16,019

YP: 3,656

SPE-GCS Members	NOVEMBER		OCTOBER	
	Total	YP	Total	YP
New Members	267	115	94	34
Reinstated	0	0	3	1
Transferred to Section	4	2	7	1
Unpaid	2,069	700	2,179	723

Student Members	NOVEMBER		OCTOBER	
	Paid	Unpaid	Paid	Unpaid
Texas A&M	876	172	863	174
Rice	53	2	52	2
HCC	97	11	92	12
UH	414	49	403	49
Total	1,440	234	1,410	237

Total Paid/Unpaid	17,762	2,303	17,429	2,416
% Paid	88.5%		87.8%	



VOLUNTEER SPOTLIGHT

Simeon Eburi

YP COMMITTEE CHAIR,
SPE-GCS YOUNG ENGINEER OF THE YEAR

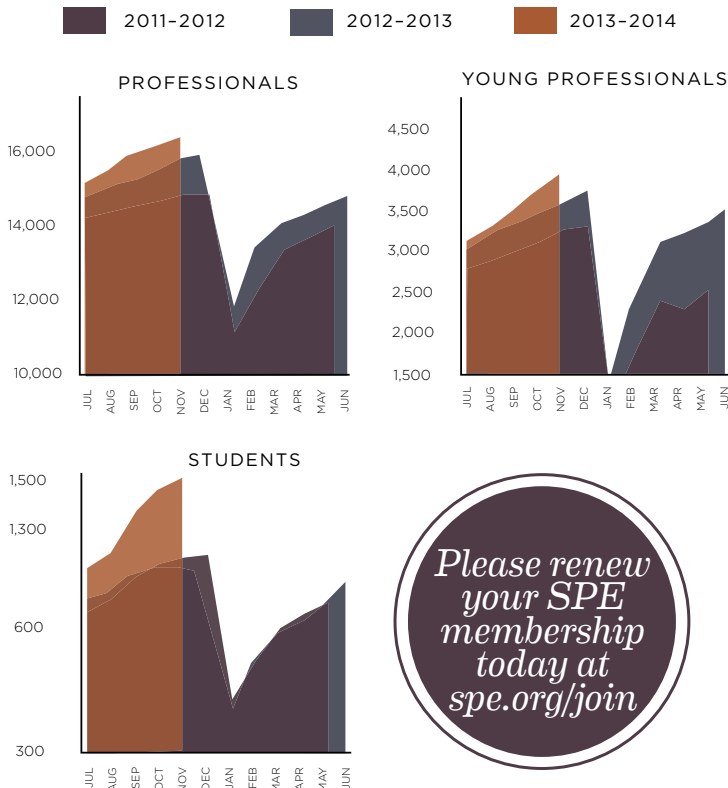
This month the SPE Gulf Coast Section wishes to recognize Simeon Eburi, our 2014 Young Engineer of the Year, who serves as Chair of the Young Professionals Committee and on the Section Board of Directors.

In his previous roles on the SPE-GCS YP Committee, Simeon served as Vice Chair and as co-chair of the 2012 Emerging Engineers Conference (EEC), which had over 190 attendees with the theme: "Unconventional Resources – Technology and Careers in Unconventional Times." Simeon lined up speakers, solicited sponsorships, and made arrangements for this successful event. He also educates high school students about the energy industry through the YP Ambassador Lecture Program. Simeon earned the Platinum level of the YP Executive Club by logging the most volunteer hours of the quarter.

Simeon is a reservoir engineer in the Mid-Continent business unit at Chevron, doing reservoir simulation and research on unconventional shale gas and tight oil reservoirs. Understanding such resource plays, particularly the rock mechanics, mechanisms and physics of hydrocarbon production from shale, is key to being able to produce these important natural resources economically.

Simeon earned both his BS and MS degrees in Petroleum Engineering at Texas Tech and now serves as Vice Chair of the university's Young Engineer Alumni Board. He also serves as a reviewer for the Journal of Porous Media and the Journal of Natural Gas Science and Engineering.

Please take this opportunity to congratulate Simeon on his award, which will be given to him during Engineers Week in February.



THEN & NOW

Column by
BUDDY WOODROOF



The API is in discussions with automotive and tire industry representatives about setting up an Automotive Travel Council to seek ways to boost highway travel. (What!)

Wildcatters continue to chase the deep Ellenburger in the Delaware basin in West Texas. (If only they could have had access to horizontal drilling technology, they could have been chasing the shallower Wolfcamp and Bones Springs.)

Some oil companies appear to think that drilling wells for crude oil is old fashioned and opt instead to pursue oil shale and tar sand opportunities. (Well, they did have the “shale” part right!)

How about this as an example of good old U.S. ingenuity...Tunisia receives U.S. aid in the form of surplus grain, which they in turn sell through brokers for cash with which to buy U.S. oil. (Who said that the days of bartering are over?)

U.S. active rig count – 1,607



PDVSA and BP reach agreement on a joint venture to market Venezuela’s Orimulsion fuel (blend of very heavy Venezuelan crude, water, and chemical additives) to electric and industrial consumers in Europe.

The jury is in as to the cause of last year’s Piper Alpha disaster in the U.K. North sea that took 167 lives...a gas release caused by removing a pressure relief valve from piping associated with a condensate injection pump appears to be the culprit.

Shell Offshore reports plans to step up wildcat drilling in the ultra deepwater Gulf of Mexico in about 3,200 feet of water in Mississippi Canyon.

There is tension in the Mediterranean after the U.S. Navy shoots down two Libyan aircraft.

**WTI crude oil - \$16.69/bbl;
U.S. active rig count – 940**



Energy futures prices experience a significant jump as a result of an explosion at the Skikda LNG complex in Algeria, and there are threats of another oil strike in Nigeria and forecasts for extremely cold weather in the U.S. Northeast and Midwest.

Pemex reports plans to spend more than \$8 billion this year on exploration and production in order to help reach their goals of increasing crude oil production by more than 20% and natural gas production by more than 50% by the end of 2006. (Bit off more than they could chew!)

Cheniere Energy expands its proposed LNG receiving terminal options to include Mobile Bay, Alabama, joining Freeport, Texas, Corpus Christi, Texas, and Sabine Pass, Louisiana.

Devonian natural gas containing as much as 5% helium has some Arizona producers contemplating going into the helium business (federally posted helium price is \$54/Mcf).

**Light sweet crude oil - \$33.61/bbl;
Natural gas - \$5.56/MMbtu;
U.S. active rig count – 1,084**

THE REST OF THE YARN

This month we continue our look back at the life and times of Henry Ford.

As a boy, Henry loved repairing machinery. In 1876, when he was 13, he saw his first “road roller,” a big steam engine that chugged along country roads and performed farm chores. It was for Henry a primal glimpse of power and mobility, and he began dreaming of creating his own mobile machine. He began building engines in the 1880’s, and by the 90’s was one of a legion of inventors working on horseless carriages. As he held down a full-time engineering job at an electrical plant in Detroit, he used his spare hours to build motors and a prototype automobile, often working with other young auto buffs.

The challenge that faced these pioneers was daunting, as virtually every component had to be built from scratch. There were no decent carburetors sitting on store shelves waiting to be used, nor were there proper bearings, wheels, batteries, spark plugs, brakes, steering mechanisms, camshafts, piston rings, or gears.

Ford labored on his first automobile in a little brick shed behind his house, working with a passion akin to that of a great artist, and with a will to succeed that he had learned at his father's knee. "We often wondered when Henry slept," recalled a friend.

Next month, Henry's dream comes to fruition and the Ford Motor Company is born.

Then & Now January

QUIZ

What country was the world's seventh largest oil consumer circa 2003 and was expected to become the fifth largest oil consumer by 2020?

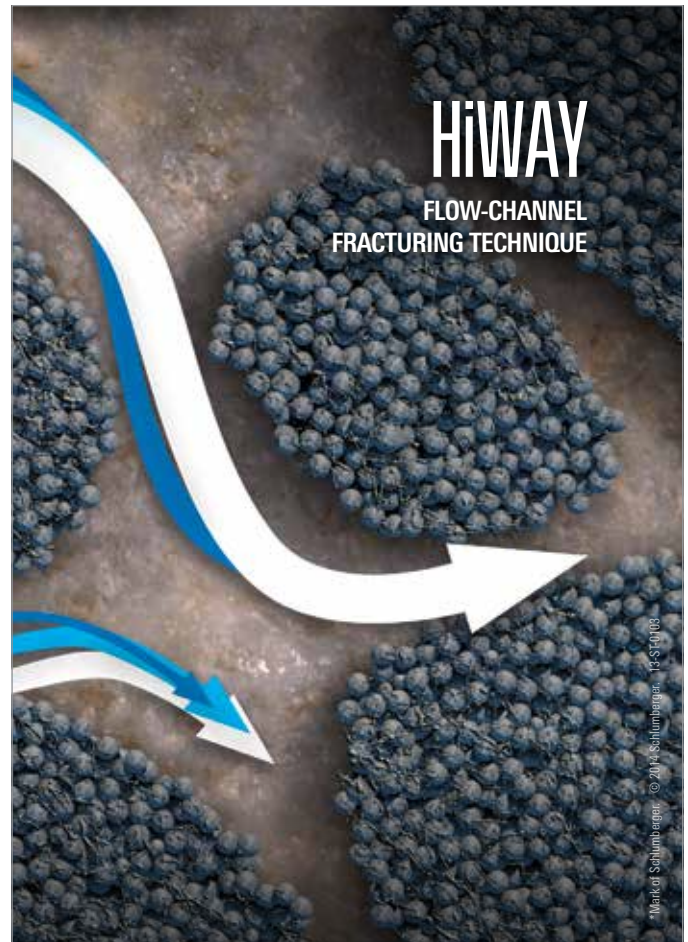
Answer to December's Quiz

In 1988, the newly spun off Sun Exploration Co. was considered to be the biggest U.S. independent producer. (Remember those days Jesse, Paul, Greg, et al?)

Congratulations to November Winner

**PEYTON GREGORY,
WHITAKER TECHNICAL OIL AND GAS**

If you would like to participate in this month's quiz, e-mail your answer to contest@spe.org by noon, January 15th. The winner, who will be chosen randomly from all correct answers, will receive a \$50 gift card to a nice restaurant.



Increase production while saving water, proppant, and time.

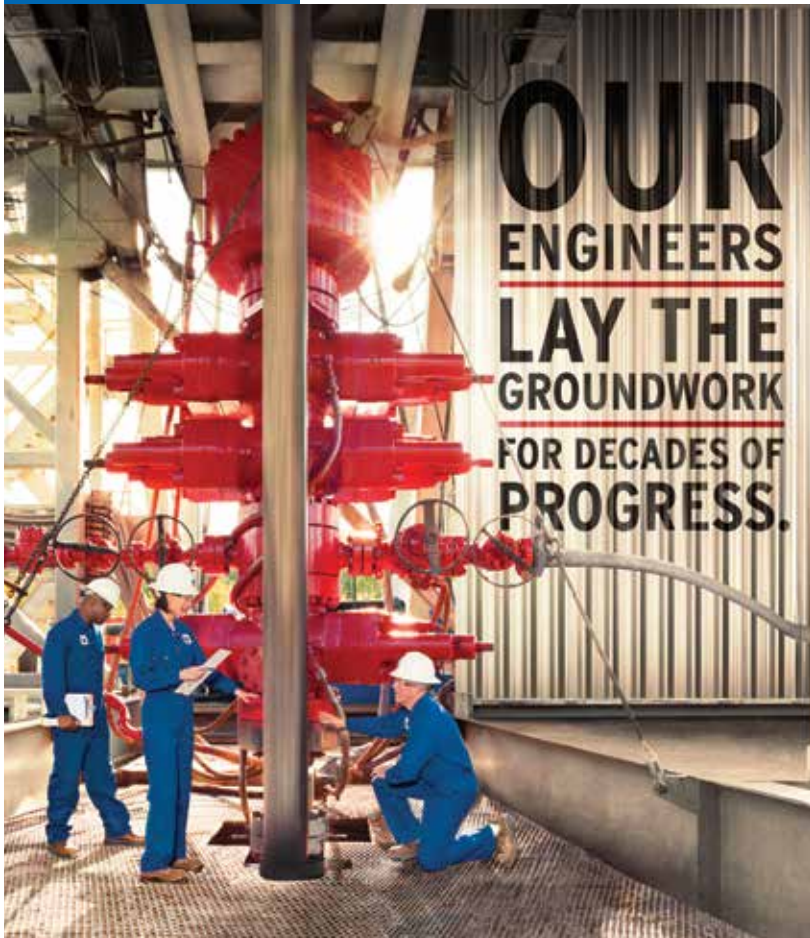
HiWAY* flow-channel hydraulic fracturing creates infinitely conductive pathways within the proppant pack, enhancing productivity and operational efficiency. On average, HiWAY jobs increase production 20%, use 40% less water, and consume 60% less proppant.

To date, HiWAY technology has been used in more than 21,000 stages. It has helped

- conserve over 900 million gallons of water
- save 1.4 billion pounds of proppant
- prevent more than 1,000 screenouts
- eliminate over 125,000 road journeys.

Find out more at
slb.com/HiWAY

Schlumberger



**OUR
ENGINEERS
LAY THE
GROUNDWORK
FOR DECADES OF
PROGRESS.**

At Chevron, you'll join a team with the technology to take on big challenges, the integrity to do it responsibly, and the drive to keep the world moving forward. If you're up to the job, visit chevron.com/careers

Chevron is seeking experienced petroleum engineers for production, reservoir, reservoir simulation, drilling and completions positions.

**JOIN THE
CHALLENGE.**



Human Energy[®]

An equal opportunity employer that values diversity and fosters a culture of inclusion. CHEVRON, the CHEVRON Hallmark and HUMAN ENERGY are registered trademarks of Chevron Intellectual Property LLC. © 2013 Chevron U.S.A. Inc. All rights reserved.

**We're
GROWING...**

Introducing our Total Managed Displacement Services (TMDS™):

Our proprietary suite of wellbore cleanout tools, non-pollutant displacement chemicals, surface pit cleanout and fluids filtration services, and direct job validation.

Delivering the ultimate clean wellbore for maximizing completion success.



**Abrado
Wellbore Services**

www.abrado-intl.com
Email us at: info@abrado-intl.com



**When time is money,
Wellsite Geoscience is
money well spent.**

Whether you're exploring a basin, producing a well or completing a shale play, time is money. That's why Weatherford Laboratories brings a suite of formation evaluation technologies right to the wellsite. Utilizing mud gas and cuttings, these technologies provide detailed data on gas composition, organic richness, mineralogy and chemostratigraphy in near real time. As a result, operators now have an invaluable tool to assist with sweet spot identification, wellbore positioning, completion design and hydraulic fracturing. We call it Science At the Wellsite. You'll call it money well spent.

SCIENCE AT THE WELLSITE™
www.weatherfordlabs.com

Formation Evaluation | Well Construction | Completion | Production

©2013 Weatherford. All rights reserved.



Water Management for Sustainable Development of US Unconventionals – Practices, Challenges, Trends and Solutions

With the increased water usage in unconventional development, the consumptive use of water is a concern for many in our industry. This presentation will discuss current water sourcing and treatment practices across some prominent US basins/plays, what some basin specific challenges are, what trends and solutions look to be promising in terms of technology as well as economics and feasibility, and who some of the leading players are in implementing them. The talk will also touch on the best practices for utilization of alternate water sources with high total dissolved solids for both cross link and slick water frac needs for completion. A technical and economic evaluation of the three basic approaches that include water treatment, bulk mixing with fresh water, as well as modification of high TDS fluids will be presented in an effort to highlight these best practices for sustainable development.

Walter Dale

Walter Dale holds a BS in Chemistry from Stephen F. Austin State University. Walter has over 15 years of technical water treatment experience. He has spent a large portion of that time leading teams and aligning technologies to enhance oil-water separations in the South Central US as well as the Canadian Oil Sands. Walter started as a technical specialist with Betzdearborn treating WW systems in Texas. After the acquisition of BetzDearborn by GE Water and Process, Walter served as a regional manager for the South Central US, then later as a General Manager for Western Canada with a focus on the Oil Sands. While in Canada, Walter was a registered lobbyist in Alberta working with the government to align sustainable development water strategies for the oil and gas market. Walter is currently the Strategic Business Manager for Halliburton Water Solutions and resides in Houston, Texas.



Event Info

SPEAKER

Walter Dale
Strategic Business Manager
Halliburton Water Solutions

LOCATION

Petroleum Club of Houston
800 Bell St. 43rd Floor
Houston, TX 77002

EVENT CONTACT

Barry Faulkner
281-627-8790
barryfaulkner@earthlink.net

MEMBERS

\$35

NON-MEMBERS

\$40

VIKING
ENGINEERING, L.C.

- PETROLEUM CONSULTING
- HPHT WELL DESIGN
- APB ANALYSIS
- PROJECT MANAGEMENT
- FAILURE ANALYSIS
- TRAINING

CRITICAL
WELL ENGINEERING
CONSULTING SERVICES

VIKING'S TEAM OF HIGHLY TRAINED
PETROLEUM PROFESSIONALS
LEND THEIR EXPERIENCE TO
CREATIVE WELL DESIGNS.

WE CAN HELP PLAN AND
EXECUTE YOUR TOUGH WELLS.

VISIT OUR WEBSITE: WWW.VIKINGENG.NET
OR CALL: (281) 870-8455 IN HOUSTON



PROCESS SOLUTIONS

MAXIMIZING PERFORMANCE THROUGH OPERATIONAL EXCELLENCE

- OPERATIONS ASSURANCE
- SUBSEA PRODUCTION REALIZATION
- FLOW ASSURANCE
- SEPARATION SYSTEMS
- GAS TREATMENT & TRANSPORT
- PRODUCED WATER MANAGEMENT
- SAND & SOLIDS MANAGEMENT
- CONTAMINANTS MANAGEMENT
- CHEMICAL MANAGEMENT
- PROCESS/PRODUCTION OPTIMIZATION
- PROCESS TROUBLESHOOTING
- OPERATIONS PERFORMANCE STRATEGY [OPS]
- SYSTEMS AWARENESS TECHNICAL TRAINING



WE ARE DEDICATED TO DELIVERING STRATEGIC VALUE FOR OUR CLIENTS.

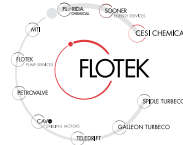
Our highly skilled technical team understand the changing and challenging needs of the oil and gas industry and the importance of objective, innovative and cost effective solutions.

contact@maxoilsolutions.com • www.maxoilsolutions.com
 ABERDEEN • LONDON • HOUSTON • STAVANGER • KUALA LUMPUR • PERTH

ORANGE IS THE NEW GREEN



Flotek's citrus-based, environmentally friendly **CnF**® fracturing additives will revolutionize the way the world thinks about fracturing and will improve your production.



For more information contact
 cesimkt@flotekind.com
 or call
 832-308-CESI (2374)

SPE/EAGE
European Unconventional Resources
Conference and Exhibition

25-27 February 2014
 Reed Messe Wien
 Vienna, Austria
www.spe.org/events/uncv

Unlocking European Potential



WED
January 29

5:00 PM TO 7:00 PM

ConocoPhillips: Recognizing Value by Unleashing the Independent E&P

Join us for a networking hour, with complimentary hors d'oeuvres and a cash bar, followed by an hour-long program beginning at 5:00 PM in the Mezzanine.

Every integrated major contains a sleek and nimble independent E&P ready to cast off its shackles and unleash the hidden value and growth that lurks underneath. The easy part is the dividing of the waters. The real work begins with managing the necessary change in culture without sacrificing core values such as safety. ConocoPhillips's decision in 2012 to leave the supermajor structure behind has accomplished just that, setting the stage for it to fully exploit and take advantage of its well-positioned portfolio – both foreign and domestic. Our speaker will discuss what ConocoPhillips has achieved in the last year as a result of this restructuring and what accomplishments we can expect in the future. How have its strategies differed? What operational changes have occurred. How has this helped it unleash its human capital? What are the measurable value impacts realized to date? Will portfolio adjustments be part of the strategy – both divestments and additions? How does ConocoPhillips plan to allocate its efforts between its conventional and unconventional assets? What are its plans to exploit and expand its lower 48 oil-rich assets?

Michael J. Gustafson

Prior to joining ConocoPhillips in April 2011, Gustafson was a manager in E&P operations for BG Group's Americas and Global LNG region. Between 2003 and 2011, he held various management positions with a focus on business development, commercial and strategic trading, and risk management. This spanned across North and South America, Europe, and Australia, involving unconventional, conventional and LNG growth through acquisitions and developments. Gustafson began his career with Mobil Oil Corporation in 1989. He held a series of roles in supply and trading involving upstream crude supply, storage, pipeline operations, and asset management. Gustafson serves as the president of the board of Volunteer Houston, a nonprofit clearinghouse for volunteers to nearly 800 nonprofit organizations in the Greater Houston area. He earned a bachelor's in finance and economics from Baylor University and an MBA from George Washington University.



Event Info

SPEAKER

Michael J. Gustafson
VP, Business Development
ConocoPhillips

LOCATION

Four Seasons Hotel
1300 Lamar
(Between Caroline & Austin)
Houston, TX 77010

EVENT CONTACT

Ricardo Concha
ricardo.concha@credit-suisse.com
713-890-1418

MEMBERS

\$40 in advance, \$50 at door

NON-MEMBERS

\$45 in advance, \$50 at door

Innovative Proppant Technology

OilPlus™
PROPPANTS

New OilPlus™ Proppants
Provide Enhanced Oil
Recovery for Your Well.

E-mail us at oilfield@momentive.com. **MOMENTIVE**

KRYPTOSPHERE™

More space to flow™

KRYPTOSPHERE ultra-conductive, ultra-high strength proppant technology

KRYPTOSPHERE provides twice the baseline conductivity of high-strength proppants at 20,000 psi closure stress. Precision-engineered, mono-sized proppant spheres with exceptional strength, durability and smoothness create more space to flow within your fractures. By maintaining increased conductivity for the life of your deepwater well **KRYPTOSPHERE** delivers higher production, increased EUR and greater ROI.

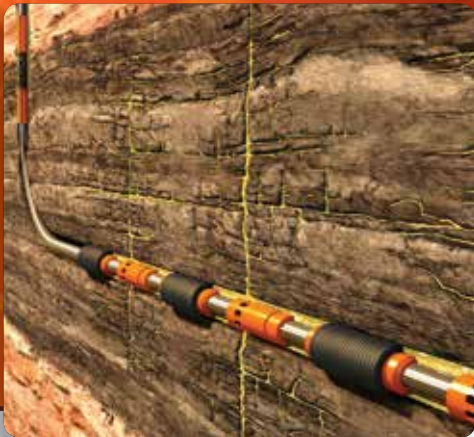
carboceramics.com/kryptosphere

CARBO®

Production. Enhanced.

TAM SOLUTIONS

PROVEN, PREDICTABLE, PACKER PERFORMANCE



TAM PosiFrac™ Systems:

With PosiFrac™ you have an all-inclusive, multi-stage system for open-hole hydraulic fracture applications. And you have the experts to run it from service centers in your region. You'll get your completion on depth, on time, with the best swellable packers available. And that's as complete as it gets.



TAM INTERNATIONAL
Inflatable and Swellable Packers
45 YEARS OF SUCCESS

WELL INTERVENTION | DRILLING & COMPLETIONS | UNCONVENTIONAL RESOURCES | RESERVOIR OPTIMIZATION

www.tamintl.com

The SimpleStart™ toe sleeve

Simply pressure up and test the casing; the toe sleeve opens automatically for initial injection.

ncsfrac.com



NCS
energy services

© 2013 NCS Energy Services LLC. Multistage Unlimited, SimpleStart, and "Leave nothing behind are trademarks of NCS Energy Services LLC.

Reaching Deeper

With the largest fleet of deep, high-pressure coiled tubing, coupled with basin-specific expertise

Going Further

To find solutions to our customers' wellsite challenges, safely and efficiently

That's the IPS Advantage



Integrated Production Services

www.ipsadvantage.com



WED
January 22

11:30 AM TO 1:00 PM

Unconventional Reservoir Development – The Economics of Fracturing

Production for Unconventional Reservoirs is a complicated issue. We have developed reservoirs over the years with widely varying properties. Early reservoirs usually consisted of formations with very high permeabilities and the capacity to produce naturally. Pressure transients in the reservoirs reached the boundaries in a matter of days, hours or even minutes or seconds in some cases. Hydraulic fracturing was introduced and developed to enable lower permeability reservoirs to produce at economic rates through traditional vertical wellbores. Horizontal drilling was combined with hydraulic fracturing to open the door to the development of even lower permeability reservoirs. The pressure transients in these reservoirs may take months or even years to reach reservoir boundaries. Why is the time it takes for the pressure transient to move through the reservoir important? It determines the efficiency in which the reservoir can be drained and the time it takes to get that done. Time is important as the economic success depends on recovering our investment in a timely manner. This talk will focus on the factors surrounding fracture treatments that affect the economics and productivity of a horizontal well in an Unconventional Reservoir.

Stephen Schubarth

Stephen Schubarth has been working in the oil and gas industry for over 32 years. Most of his career has been focused on the design, implementation, and evaluation of hydraulic fracture treatments in reservoirs here and around the world. He has authored/co-authored over 25 papers and articles, mostly emphasizing the use of proppants in hydraulic fracture design. Steve is currently the President of Schubarth Inc and Schubarth Software Systems LLC, which is developing a new type of fracture design and evaluation software for the industry.



Event Info

SPEAKER

Stephen Schubarth
President
Schubarth Inc.

LOCATION

Greenspoint Club
16925 Northchase Drive
Houston, TX 77060

EVENT CONTACT

Jonathan Godwin
281-921-6526
jgodwin@carboceramics.com

MEMBERS

\$35 in advance, \$40 at door

NON-MEMBERS

\$35 in advance, \$40 at door

LUFKIN*Expect More*

More **SYSTEMS**
More **SERVICES**
More **LOCATIONS**



Pump jacks with legendary quality and reliability have been the reputation of Lufkin for more than 100 years. In that same tradition, Lufkin now offers more artificial lift systems, more support services and more locations to serve operators around the world. These highly engineered solutions, supported by our experienced staff, deliver optimum production from your oil and gas wells.

Now, more systems and services to meet your requirements:

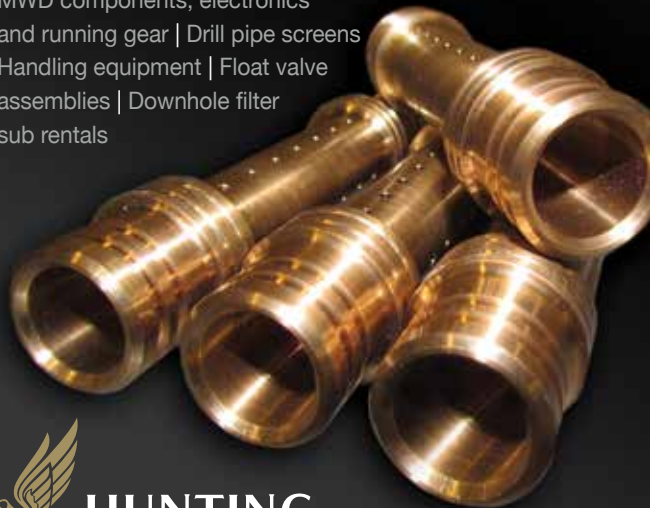
- Automation
- Beam Pumping Units
- Hydraulic Pumping Units
- Reciprocating Pumps
- Progressing Cavity Pumps
- Production Optimization
- Well Monitoring
- Secure Scada
- Plunger Lift
- Gas Lift
- Completion Products
- Maintenance & Repair
- Training

The Energy Flows Through Us®
 LUFKIN.COM

MWD COMPONENTS

Meeting your exacting requirements.

MWD components, electronics and running gear | Drill pipe screens | Handling equipment | Float valve assemblies | Downhole filter sub rentals

**HUNTING**

www.huntingplc.com

© 2013 Hunting

Frac Less, Drill Less



FIND MORE

**Geotrace**

Find out how at www.geotrace.com

Global Process Safety Reporting Progress

Since the Baker Panel report was published, the global oil and gas industry has been working to implement a recommendation to standardize the definition of “process safety event”, begin collecting and disseminating data, and provide transparency in reporting. The American Petroleum Institute’s (API) Recommended Practice 754, published in 2010, was the first step in this process and established consistent definitions for what constitutes a process safety event (using a four tier approach) for refining and petrochemical companies. The International Association of Oil and Gas Producers (OGP) adopted identical definitions in 2011, and further provided clarification and examples relevant to the upstream oil and gas industry. Despite this effort, and ongoing submission of data, industry reporting of process safety events has been slow. 2013 will see public reporting by both API and OGP, but with vastly different levels of transparency. This presentation will review those efforts.

Ted L. Caudill

Mr. Caudill is the Process Safety Coordinator for Marathon Oil Company and has responsibility for supporting process safety efforts across Marathon’s global operations; communicating metrics, best practices and lessons learned; and furthering Marathon’s goals for protecting people, environments and assets. Mr. Caudill has been with Marathon for 20+ years and has experience in upstream and downstream process safety and environmental compliance. He is a registered Professional Engineer and holds a Bachelor of Science degree in Chemical Engineering from the University of Kentucky, and a Masters of Environmental Engineering degree from Marshall University. Mr. Caudill is currently participating in the American Petroleum Industry’s effort to revise Recommended Practice 754 and is active on the Process Safety Subcommittee of the International Association of Oil and Gas Producers.

SPEAKER

*Ted L. Caudill
Process Safety Coordinator
Marathon Oil Company*

LOCATION

*Petroleum Club of Houston
800 Bell Street, 43rd Floor
Houston, Texas 77002*

EVENT CONTACT

*Trey Shaffer
281-600-1016
Trey.shaffer@erm.com*

MEMBERS

\$40

NON-MEMBERS

\$50

STUDENTS

\$10

HSSE-SR & YP Present: Night at the Movies



Please join SPE-GCS Young Professionals & Health, Safety, Security, Environmental, Social Responsibility groups for an evening of networking and learning.

For questions or inquiries, please contact Chet Teaford (cteafor@hdrinc.com), Trey Shaffer (Trey.Shaffer@erm.com) or Pavitra Timbalia (pavitra.a.timbalia@exxonmobil.com).

We are currently looking for event sponsors!

5:00 – HAPPY HOUR

6:00 – FEATURE FILM: “FRACKNATION”

7:30 – INDUSTRY EXPERTS PANEL DISCUSSION

DATE

Thursday, February 20th

TIME

5:00 PM to 8:00 PM

LOCATION

*Studio Movie Grill
805 Town & Country Ln.
Houston, TX 77024*

COST

\$10; Must register online!

PHDWIN™

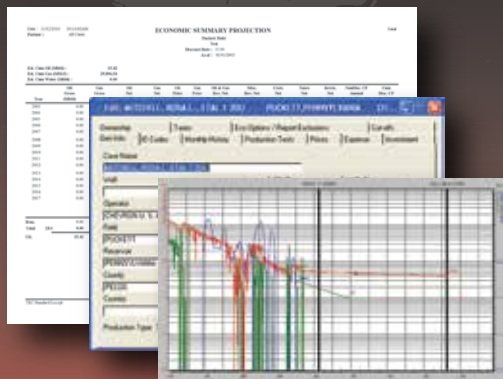
Integrated Economics & Decline Curve Analysis

NOW EVEN MORE POWERFUL WITH

PHDRMS™

Reserves Management System

The *complete solution* for evaluating, managing, and reporting reserves and performance data.



Schedule an **online** presentation
TODAY!

TRC Consultants, LC 888-248-8062 www.phdwin.com

MULTI-STAGE COMPLETIONS

Not all ball-drop systems are created equal.

Our QA/QC process provides 100% traceability with 2D barcodes ensuring that every system is tracked from raw steel to on-site delivery. Contact us today and let us help you maximize your assets.

DO IT ONCE. DO IT RIGHT.

www.packersplus.com

RPS Knowledge Reservoir

- Consulting
- Technical Projects
- Resourcing
- Unconventional
- Conventional
- Deepwater
- Production Solutions
- Knowledge Management

knowledge-reservoir.com

Global Hydraulic Fracturing Expertise

281-530-4010
www.elyfrac.com

TUE
January 14

11:30 AM TO 1:00 PM

Horizontal Well Fracture Initiation and Extension from Cemented Cased Wells

The presentation discusses two critical aspects of fracturing in cemented cased horizontal wells: the role of cement bond strength in fracture initiation and the influence of spacing between perforation clusters on fracture width. It shows that opening of inclined and transverse fractures requires shear sliding between the formation and cemented casing. Strong cement bond or external casing attachments near the perforated interval hinder this shear sliding and hamper free opening of the fracture. If the initiated fracture is longitudinal, its opening causes tensile failure of the bond between casing and cement. This enhances the link between fracture and perforations and assists successful execution of the job. Close spacing between perforation clusters also results in fractures that are narrower than predicted by theories of fracture mechanics. Furthermore fracture width tapers quickly as it extends beyond the wellbore. Together these two mechanisms can explain why these types of fractures are known to occasionally encounter operational problems that include inability to inject at the planned rate during the early stage of each fracture and sudden screen-outs even with very low proppant concentration. The presentation offers perforation recommendations for enhancing borehole/fracture connections, as well as guidelines for successful execution of the treatment.

Ali Daneshy

Ali Daneshy is President of Daneshy Consultants International and adjunct professor in Cullen College of Engineering at University of Houston where he teaches a graduate course on hydraulic fracturing. He has over 40 years of experience in the technology and application of hydraulic fracturing and has published numerous papers on the subject. At the present his main focus is on consulting and teaching short courses related to horizontal well fracturing.



Event Info

SPEAKER

Ali Daneshy
President of Daneshy Consultants
International
Daneshy Consultants International

LOCATION

Greenspoint Club
16925 Northchase Dr
Houston, TX 77060

EVENT CONTACT

Matthew Strom
281-618-7848
Matthew_Strom@swn.com

MEMBERS

\$35

NON-MEMBERS

\$40

WALK-INS

\$50



Completion

SYSTEMS, FLUIDS & TOOLS



Specialized tools assure a debris-free completion

Engineered to enhance completion efficiency, M-I SWACO pre-completion wellbore tools provide single-pass cleanups that focus on drilling mud residue removal, wellbore debris elimination, formation damage minimization and NPT reduction.

In addition to specialized tools, we offer an integrated suite of sophisticated planning software and effective displacement fluids that assure a clean, debris-free well during the critical transition of well construction from the drilling to completion phases.

www.miswaco.com/completions



Geosteering Services

Highly qualified personnel with 20+ years DD & LWD experience

24/7 Real-time monitoring or reports from LAS files

Proprietary software

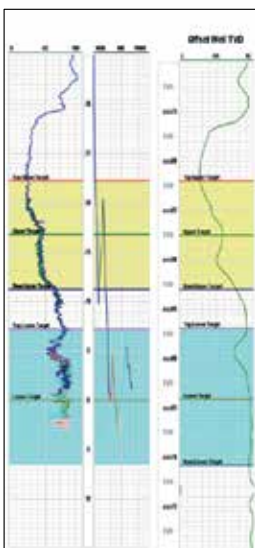
Geosteering Software

TST interpretation for GR only measurements

Image displays / interpretation of azimuthal GR, resistivity or density measurements

Resistivity modelling / interpretation for LWD propagation resistivity

Software sales, training and technical support



info@geosteering.com

Call 281 573 0500

DEDICATED TO DELIVERING STRATEGIC VALUE FOR OUR CLIENTS.



We are an independent, multi-disciplined technical consultancy servicing the international oil and gas industry.

- OPERATIONS ASSURANCE
- SUBSEA PRODUCTION REALIZATION
- FLOW ASSURANCE
- SEPARATION SYSTEMS
- GAS TREATMENT & TRANSPORT
- PRODUCED WATER MANAGEMENT
- SAND & SOLIDS MANAGEMENT
- CONTAMINANTS MANAGEMENT
- CHEMICAL MANAGEMENT
- PROCESS/PRODUCTION OPTIMIZATION
- PROCESS TROUBLESHOOTING
- OPERATIONS PERFORMANCE STRATEGY [OPS]
- SYSTEMS AWARENESS TECHNICAL TRAINING

MAXIMIZING PERFORMANCE THROUGH OPERATIONAL EXCELLENCE

contact@maxoilsolutions.com • www.maxoilsolutions.com

Overview of Texas Rail Road Commission Regulations

The presentation will offer an overview of current oil and gas regulations/laws of the Texas Rail Road Commission, and forecasted effects of our business activities in the Permian Basin.

David J. Porter

David J. Porter was elected to serve a six-year term as Texas Railroad Commissioner in November 2010. Since taking office, Commissioner Porter has been appointed to the Interstate Oil and Gas Compact Commission as the Official Representative of Texas by Texas Governor Rick Perry. He has also been appointed as Governor Perry's official representative on the Interstate Mining Compact Commission and currently serves as an advisory board member for the Texas Journal of Oil, Gas, and Energy Law.

Porter created the Eagle Ford Shale Task Force, the first of its kind at the Texas Railroad Commission, to establish a forum that will bring the community together and foster a dialogue regarding drilling activities in the Eagle Ford Shale. The Task Force is comprised of local community leaders, elected officials, industry representatives, environmental groups, and landowners. The goal of the group is to open the lines of communication between all parties involved, establish recommendations for developing the Eagle Ford Shale, and promote

economic benefits locally and statewide. In recognition of his foresight and leadership, Porter was named "Man of the Year" in 2013 by the industry publication, The Oil & Gas Year.

Before taking office, Porter built a successful small business around his CPA practice in Midland Texas, providing accounting and tax services to oil and gas producers, royalty owners, oil field service companies, and other small businesses and individuals.

Porter was born in Fort Lewis, Washington in 1956 while his father was serving in the US Army. He graduated magna cum laude from Harding University in May of 1977 with a bachelor's degree in accounting. He passed the CPA exam on his first attempt in November of 1977 and became a Texas CPA in September 1981, the same year he moved to Midland. David met his wife, Cheryl, while attending Harding University, and they were married in 1979. They are the proud parents of one daughter and are also the proud grandparents of a four-year old granddaughter.



Event Info

SPEAKER

David J. Porter
Texas Railroad Commissioner
Texas Railroad Commission

LOCATION

Norris Center Westchase
9990 Richmond Ave., Suite 102
Houston, TX 77042

EVENT CONTACT

Amy Timmons
713-836-6563
Amy.Timmons@Weatherford.com

MEMBERS

\$35

NON-MEMBERS

\$40

WALK-INS

Additional \$5

PRODUCTIONER

USED BY EVERYONE,
FROM THE FIELD PUMPER

ALL THE WAY UP TO MANAGEMENT

What our customers are saying:
"Productioner is a great data repository and analysis tool. Data entered in the field is immediately available to corporate office."

- FEATURES**
- FIELD DATA CAPTURE
 - ALLOCATIONS
 - REPORTS & GRAPHS
 - CUSTOMIZABLE TEMPLATES
 - FULLY MANAGED SERVICE

Mi4 Corporation
Ph: (713) 401-9584
sales@productioner.com
www.productioner.com



24/7 SUPPORT HOTLINE (866) 421-6665



TO BE SURE

Increase the reliability of your pipeline project with Flexpipe Systems' proven solutions

Flexpipe Systems' corrosion resistant linepipe products:

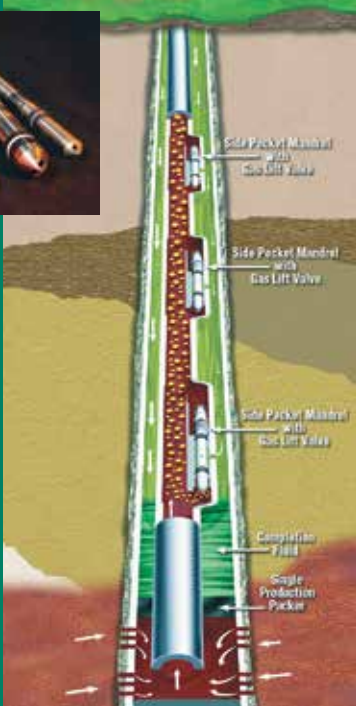
- Are available in 2", 3" and 4" ID
- Have rating pressures up to 2,000 psi
- Operate in temperatures up to 180°F (82°C)
- Come in spoolable or reel-less packaging

With over 55 million feet of linepipe and 80,000 fittings installed worldwide, we have the answers for your next pipeline challenge.

ShawCor - when you need to be sure



Advance your career.
Attend the 37th
ASME/ALRDC
International Gas-Lift
Workshop



Norris Conference Center
Houston, Texas, Feb. 3rd-7th, 2014

Continuing education courses and technical discussions will cover:
Gas-Lift Design & Valve Performance
Troubleshooting & Optimization
Automation & Surveillance

Register at
www.asme-ipti.org/gas-lift-workshop



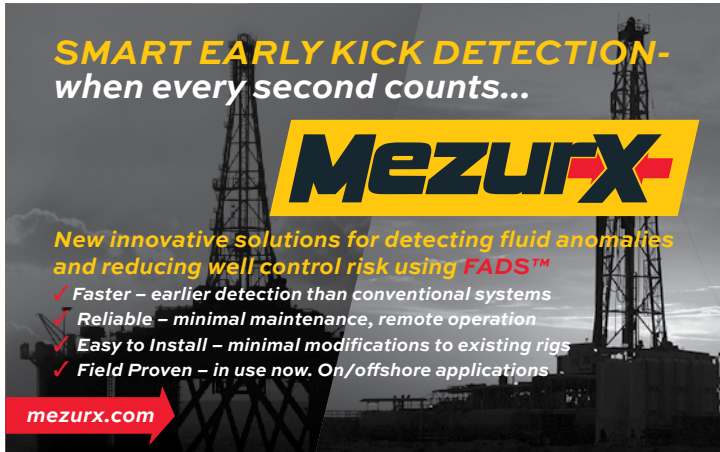
SMART EARLY KICK DETECTION- when every second counts...



New innovative solutions for detecting fluid anomalies and reducing well control risk using FADS™

- ✓ Faster - earlier detection than conventional systems
- ✓ Reliable - minimal maintenance, remote operation
- ✓ Easy to Install - minimal modifications to existing rigs
- ✓ Field Proven - in use now. On/offshore applications

mezurx.com



Drilling Surveillance and Geosteering in Real-Time!

Petrolink is uniquely vendor neutral allowing you to bring your data into your own environment. We provide true real-time interoperability between rig site contractors and your drilling and geoscience office teams to Make Better Decisions, Faster!

www.petrolink.com
sales@petrolink.com



PHDWin – Simple Solutions for Evaluating Complex Economics

A short overview with specific examples of how Incremental Benefit Calculations, Group Economic Limits, and economic allocations can be used to make more informed decisions.

David Pacinda

David Pacinda, the current President at TRC Consultants, LC, graduated from Texas A&M with a bachelor's degree in Petroleum Engineering. While there, he also took a significant amount of coursework in chemical engineering. David went on to earn his Texas Professional Engineer license in 1993 while working at Somont Oil Company. He has 26 years of experience in petroleum engineering, in varying aspects, including natural gas processing, drilling, completion, and reservoir engineering. While living in the Dallas metro area, David was awarded an adjunct professorship while teaching a continuing education reservoir engineering class at Brookhaven College. He was a founding partner of TRC in 1986, and continues to work for the company and educate the industry on current discounted cash flow and decline curve modelling techniques. TRC's recent growth into international markets has allowed David to extend his expertise into international PSA modeling. He currently lives with his wife and two children in Austin, TX.

Event Info

SPEAKER

David Pacinda
President
TRC Consultants

LOCATION

Sheraton Brookhollow
3000 N Loop W Fwy
Houston, TX 77092

EVENT CONTACT

Lilly Lee
832-714-5615
lilly.lee@nexenusa.net

MEMBERS

\$38.00 (\$48.00 after 1/09/14)

NON-MEMBERS

\$38.00 (\$48.00 after 1/09/14)

281.955.2900
www.stress.com

Providing Engineered
Solutions



STRESS ENGINEERING SERVICES INC.
DESIGN • ANALYSIS • TESTING



ULTERRA™

When Every Run Counts™

www.ulterra.com +1 817 293 7555

FRAC SCHOOL

February 17-21, 2014
Houston, TX

For More Information Visit:
www.fracschool.com
or call 832.833.2569

advanced
FRAC SCHOOL

February 17-21, 2014
Houston, TX

PetroSkills®

Build Your Foundation

To maximize convenience, PetroSkills will deliver our most popular courses multiple times in Houston for the first few months of 2014. Enroll soon to ensure your seat!



- **Basic Petroleum Engineering Practices – BE:**
3-7 February, 21-25 April
- **Production Operations 1 – P01:**
17-28 March, 2-13 June
- **Applied Reservoir Engineering – RE:**
24 February - 7 March, 21 April - 2 May, 9-20 June
- **Completions and Workovers – CAW:**
24-28 February, 21-25 April

For details on these or our other 250 sessions in the Gulf Coast, contact Patty Davis, (832) 426-1203 or patty.davis@petroskills.com, or see details and full selection at www.petroskills.com



Did you get your copy of our 2013-14 Training Guide?
If not, sign up for free at www.petroskills.com/contact

Measure Hydrocarbon Stage Production

...No tools, coiled tubing or wireline

Tracerco

Providing Insight Onsite



Tracer technology to evaluate stimulation and well design:

- ◆ Measure actual oil and gas production per stage
- ◆ Results equivalent to 30+ days of production logging
- ◆ Diagnose fracture communications to offset wellbores
- ◆ Confirm toe flow to verify release of all plugs

Knowing what's going on at the bottom keeps you on top.

To learn more call or email:
Tel: 281 291 7769
Email: reservoir@tracerco.com
www.tracerco.com/reservoir-characterisation



Reservoir
Technologies



Research & Development 2014 Events

The R&D Study Group will not meet in January. Please join us throughout 2014 on the first Thursday of the month from 11:30 to 1:00 at the Norris Center, Westchase at 9990 Richmond Ave., South Bldg., Ste. 102. We have a buffet lunch followed by a presentation. Our programs through June will be as follows:

- February 6, 2014 – Intellectual Property, Panel Discussion
- March 6, 2014 – Ron Richter, speaking on Forensic Testing
- April 3, 2014 – John Bartos, CTO, Cameron, discussing the Cameron artificial heart program
- May 1, 2014 – Equipping Young Professionals for a Career in oil and gas R&D
- June 5, 2014 – TBD

We have a 30 minute presentation followed by 30 minutes of question and answer. Our attendance varies between 35 and 45 at each event. Our attendees come from R&D, New Product Development, and Technology Development groups within the oil and gas industry.

We hope you will plan on joining us.

Info

STUDY GROUP CHAIR

Marci Nickerson, Consultant
713-446-3400
mnick52@sbcglobal.net

LOCATION

Norris Center Westchase
9990 Richmond Ave., Suite 102
Houston, TX 77042

DIRECTIONAL
AND
HORIZONTAL
DRILLING
SPECIALISTS



WWW.NOVADIRECTIONAL.COM

PASS THE PROFESSIONAL FUNDAMENTAL EXAM (FE)

Do you need to take the FE Exam before you can qualify to take the Petroleum PE Exam next fall – Even several years after graduation?

Contact Winrock Engineering for the technique to study and pass the FE Exam with a 98+% certainty

Next FE Exam Date: April 12, 2014
FE Exam Application Deadline Date: February 20, 2014

P: 405-822-6761 | E: bingwines@cox.net
winrockengineeringinc.com

SEE THE ENERGY WITH TGS' DATA INTEGRATION SOLUTION

See and access all of your G&G data with Volant, TGS' geoscience data and application integration solution.

For more information contact TGS at:
Tel: +1 713 860 2100
Email: info@tgs.com



WWW.TGS.COM

© 2013 TGS-NOPEC GEOPHYSICAL COMPANY ASA. ALL RIGHTS RESERVED.



Why can Weatherford deliver more real time data at the wellsite than any other mudlogging company?

Tim has cabin fever.



**EXCELLENCE
FROM THE
GROUND UP™**

Our Global Operations Manager for Surface Logging Systems, Tim, is all smiles these days. That's because he and his team recently designed a new state-of-the-art mudlogging cabin. The spacious interior makes room for more laboratory services at the wellsite. Now exploration companies have access to more data in real time, so they can make better decisions faster. It's one more way Weatherford Mudlogging is committed to Excellence from the Ground Up.

SURFACE LOGGING SYSTEMS
www.weatherford.com/surfacelogging
mudlogging.services@weatherford.com



Trying to make sense of the U.S. Water Market?

Water Market Opportunities Report

Play-by-play market sizes
Regulatory trends
Analysis on major players
Insight into business models

water acquisition
water transfer
water storage
water treatment
water hauling
water disposal



ihs.com



cap-res.com

Maria Bertram, IHS
1-781-301-9438
maria.bertram@ihs.com

New Version

MUDPRO Drilling Mud Reporting Software



Pegasus Vertex, Inc.
713-981-5558 | sales@pvisoftware.com | www.pvisoftware.com



HYDRAWELL
ONE INVENTION AHEAD

P&A Specialists and
Design Engineering Services

HydraWash™ One-Trip
Cementing System
*patent pending

www.hydrawell.com
Email us at info@hydrawell.com

Integration of Subsurface Modeling and Surface Networks to Develop CO₂ Source Field

With current oil prices, CO₂ floods become viable and continue to grow in importance throughout the world, especially in mature fields. One of the important pieces of a CO₂ flood is the CO₂ itself. The presentation will describe how Kinder Morgan developed McElmo Dome, the giant CO₂ source field, to meet production targets.

The field is located in rugged topography with deep impassable canyons within an archeologically sensitive area and on the flank of a large plunging anticlinal structure. The location of the field in the surface and subsurface creates complexity in field development and in modeling efforts. In this presentation, we will describe the process of building a simulation model with tilted water contact, matching the production and pressure histories. The presentation will then discuss how the field development plan was selected. We found that increasing compressor suction pressure would be the best plan to meet and maintain the production target. We will offer a step-by-step explanation of how we integrated the subsurface model and surface system to optimize CO₂ production rates. Finally, this presentation will highlight the benefits of integration modeling applications for the McElmo Dome field development.

Erwinsyah Putra Ph.D.

Erwinsyah Putra is Chief Reservoir Engineer at Kinder Morgan CO₂ Company. He manages the Reservoir Management Solution and Technology Team. Prior to joining Kinder Morgan, he worked for the petroleum engineering department, Institut Teknologi Bandung (ITB), Indonesia as an assistant professor, the Petroleum Recovery Research Center at the New Mexico Institute of Mining and Technology (NMIMT) as a post doctoral research associate, and for the petroleum engineering department at Texas A&M University, College Station as a TEES research engineering associate.

He holds a BS degree from ITB and MS and PhD degrees from NMIMT. He served as a review chairman in the SPE Reservoir Evaluation and Engineering Journal. He received an Award of Appreciation as Review Chairman in 2005, Best SPE Technical Editor Award, and the 2012 SPE Gulf Coast Regional Reservoir Description and Dynamics Award. He has been involved in waterflooding and CO₂ flooding projects in naturally fractured reservoirs, CO₂ source project expansion projects, new CO₂ field development, field development projects of oil and gas reservoirs, Surfactant-CO₂ pilot projects and the beyond tertiary project.



Event Info

SPEAKER

Erwinsyah Putra, Ph.D
Chief Reservoir Engineer
Kinder Morgan CO₂ Company

LOCATION

Sullivan's Steakhouse
4608 Westheimer Rd
Houston, TX 77027

EVENT CONTACT

Miles Palke
713-750-5490
miles_palke@ryderscott.com

MEMBERS

\$35 Pre-Registered / \$45 Walk-in

NON-MEMBERS

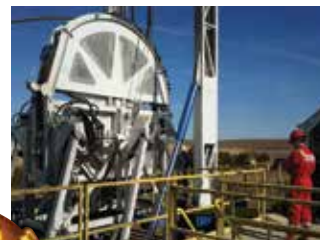
\$40 Pre-Registered / \$45 Walk-in

WWW.CoiledTubingDrilling.com

New Directional Coiled Tubing Drilling Capability. At your service.

We can help you recover more production from existing wells with underbalanced, directional and horizontal drilling.

Contact us to discuss how Coiled Tubing Drilling can be used to your advantage.



AnTech®



We can work with your existing coil provider.

sales@coiledtubingdrilling.com

713-703-0608

10030 Fairbanks North, Houston, Texas 77064



Engineering consulting and training services to maximize the value of your investment in flow assurance

SPT Group has one of the world's leading dedicated flow assurance consulting teams working with multiphase flow technology in wells and pipelines.

Every day we work with the world's leading energy corporations and oil and gas service companies to locally deliver specialist consulting and training services through our global offices and training facilities.

To learn more about the value we offer please visit www.sptgroup.com

SPT GROUP
A Schlumberger Company

We Make It Work Right The First Time.

Deeper and deeper water. Larger projects. More complex design challenges. More people with highly specialized skills. Fewer people who see the big picture.

GATE's full-service team takes a larger, systems view of the interactions and intricacies of the project as a whole. This enables us to develop solutions that cross many different disciplines and boundaries.

The result: smoother facility startups, higher uptime and reliability, less operating headaches and improved whole-life value for existing developments.

- Materials & Corrosion
- Subsea Engineering
- Offshore Risk Management
- Commissioning & Initial Startup
- Chemical Systems Engineering
- Flow Assurance
- Water Injection

www.gateinc.com



Concepts of Fracturing Flowback: Controls, Analysis and Benefits

Fracture flowback techniques and controls have proven to have a significant impact on post-fracture well performance in some areas. This presentation will focus on experiences from several different shales and some tight oil formations with regard to shut-in time, possible mechanisms in play, rate, and pressure drop and/or choke management techniques used to achieve acceptable results.

George E. King

George E. King is a registered professional engineer in multiple states with 42 years industry experience in most aspects of completion, well construction, and well failure analysis. His work has focused on unconventional formations, sand control, perforating, as well as fracturing and well construction risk analysis. He holds degrees in chemistry from Oklahoma State University, as well as chemical engineering and petroleum engineering from the University of Tulsa, where he also taught completions and workovers for 11 years at night as an adjunct professor. He has authored 68 technical papers, journal articles, and book chapters. He was awarded the 2004 SPE Production Operations Award and the 2012 Engineer of the Year Award from the Houston Region of the Texas Society of Professional Engineers. He currently serves as Apache's Distinguished Engineering Advisor in Houston.

Event Info

SPEAKER

George King
Distinguished Engineering Advisor
Apache Corp.

LOCATION

Norris Westchase Center
9990 Richmond Ave., Ste. 102
Houston, TX 77042

EVENT CONTACT

Andrea Hersey
281-646-2805
andrea.hersey@momentive.com

MEMBERS

\$40

NON-MEMBERS

\$45

VIBRATION TECHNOLOGY
LEADING THE INDUSTRY IN STUCK PIPE RECOVERY
INNOVATIVE TECHNOLOGY FOR REMOVING STUCK TUBULARS

+ WORKOVER
+ COMPLETIONS
+ DRILLING



Vibration Technology

www.layne.com

Slider

Automated Directional Drilling

IMPROVE YOUR HORIZONTALS

- ON-BOTTOM TOOL FACE ORIENTATION
- INCREASED MOTOR LIFE
- INCREASED ROP & HORIZONTAL REACH CAPABILITY
- ELIMINATES ORIENTATION TIME LOSSES



slb.com/Slider

www.intertek.com



Upstream Services

6700 Portwest Drive | Houston, TX 77024
 713.479.8400
 westportservices@intertek.com

You drop it in the wellbore, we catch it!

Introducing ...
OPEN HOLE NET™

Protects the wellbore from metal dropped into and coming out of the wellbore!



- Installs over any API standard size annular preventer.
- Roughnecks rig it up; no operator needed.
- No power source needed.
- Operates 24/7/365. Never rests.
- Complete stainless steel construction.
- M.A.D.E.™ (Made, Assembled, Designed, Engineered) in USA.

Visit Us at
 SPE/ATCE 2013
 Sept. 30-Oct. 2
 Booth #3258

5D Oilfield Magnetics™

Premier Magnetic Applications in Drilling Completion and Production Operations
 sales@5doilfieldmagnetics.com • 337.466.7400



www.5doilfieldmagnetics.com

ARE YOU FEELING THE EFFECTS OF THE Great Crew Change?

Replenish your company men with competent personnel...

Signa's Wellsite Foreman Intern Training (WFIT) program does all the groundwork to provide operators with qualified company men. We screen, select and train optimal candidates, evaluating each of them throughout to ensure they're tailor-made for your company.

- Drilling or Completion
- Establish core skillsets
- Instill good habits
- Get quicker results
- Monitor progress



The WFIT program is a comprehensive 8-mo. training class utilized by large and small operators (As featured in *Offshore* magazine).

Signa Engineering Corp.
 Houston, TX USA
www.signaengineering.com

Contact: Dave Roseland
 281.774.1026
droseland@signa.net

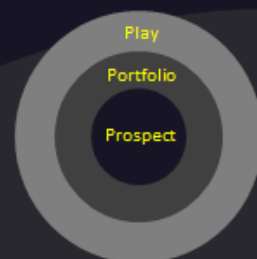
Rose & Associates

Courses Consulting Software
 Improving E & P Effectiveness

Unconventional Resource Valuation Course (3 to 5 days)

UCRA Software
 To model, value and risk drilling in resource plays

lisaward@roseassoc.com



- New drilling and completion technologies
- Custom-engineered solutions
- Fit-for-purpose manufacturing
- Faster response.



www.tiwtools.com
 ENGINEERED TO FIT



TIW CORPORATION A Pearce Industries Company

SPE-GCS EXECUTIVE CLUB WINNERS

Congratulations To Our Winners!

PLATINUM MEMBER

Hilary Bartlett
Wins a \$100 Gift Card!



GOLD MEMBER

Arielle Steers
Wins a \$75 Gift Card!



SILVER MEMBER

Eva Krauss
Wins a \$50 Gift Card!



MORE INFO

Chew Yeong Leong (Chad)
cleong4@slb.com
www.spegcs.org/executive-club/

2013 SPE-GCS YP SALARY SURVEY

If you know co-workers or friends that have recently switched jobs, you're not alone: the job market for Young Professionals in the Gulf Coast Section has been scorching hot the last few years! With all that activity there is a risk of misinformation that can be fueled by anecdotal evidence/hearsay and headhunters tempting you to test the market.

Being the largest YP group in the entire Society of Petroleum Engineers, we identified a unique opportunity to create a comprehensive and legitimate source of data for our members to use in evaluating their careers and current market values. Back in April and May, we asked our membership to respond to a brief, anonymous, and confidential survey to provide a real-time and objective overview of the current job market for Young Professionals in the Gulf Coast Section.

The results of the survey were intriguing: we were able to substantiate some rumors while dispelling others, and we were able to analyze some behavioral trends from the results. Although the analysis of our results is not meant to be conclusive or scientific in nature and we do not purport that our sample size is indicative of the overall industry, we managed to establish some interesting trends that we are pleased to present to our membership for consideration. More importantly, we are releasing all individual results to our membership so that our members can analyze the results specific to their situation on their own time and to the extent that they wish.

You can find the Executive Summary and all of the raw data in the Young Professionals Committee folder at <http://www.spegcs.org/file-library/>.

We hope to build upon the success of this pilot year, so please be on the lookout for a refresher of this survey in the upcoming months!

COMMITTEE AUXILIARY

BOOK CLUB

DATE

January 22, 2014

BOOK

Mrs. Lincoln's Dressmaker
by *Jennifer Chiaverini*

DISCUSSION LEADER

Ruth Nell Powers

HOSTESS

Jeanette Hamman

CONTACT

Martha Lou Broussard
713-348-4492

NEW MEMBERS

The SPE Auxiliary welcomes guests and new members. For further information please contact our President, Nancy Giffhorn, at rgiffhorn@AOL.com or at 281-360-4631.

PATENTED
proNova™ by TDE

DRILLING PERFORMANCE

Drilling Tracking Report

CREW PERFORMANCE MEASUREMENTS

AUTOMATIC OPERATIONS DETECTION

INVISIBLE LOST TIME DETECTION

281.755.7595
www.pronova-tde.com

Delivering Testing Results in Every Phase

Production Testing Services

- Well Testing
- Well Cleanup
- Frac Flow Back
- Drillstem Testing
- Subsea Test Trees
- Extended Well Tests
- Early Production Facilities

© TETRA and the TETRA logo are registered trademarks of TETRA Technologies, Inc. All rights reserved.

tetrathec.com

Directionally challenged?

If your directional drilling program is more challenging than you expected, maybe you need a new directional driller. Maybe you need Ryan Directional Services, Inc.

Ryan has experience in virtually every important oil and gas shale play. We know the potential roadblocks and how to address them before they cost you money. And that takes drilling to a new level of efficiency.

Call Ryan at 281.443.1414 and see how our directional drilling program will change your experience from challenging to rewarding.

www.nabors.com

RYAN DIRECTIONAL SERVICES, INC.
 A NABORS COMPANY

Dyna-Drill

Manufacturers of Drilling Motor Components

- Mud Motor Power Sections (Sizes: 2 7/8" to 11 1/2")
- Coil Tubing Power Sections (Sizes: 1 11/16" to 3 3/4")
- Matrix-3® Coated Bearings
- Precision Machining

www.dyna-drill.com

Power That Lasts™

Reach for the SUMMIT in ESP solutions

EASTERN AREA 918.392.7820
 SOUTHERN AREA 432.563.7040
 WESTERN AREA 307.764.6346

www.summitesp.com

2014-2015 SPE-GCS Scholarships

Renewable yearly scholarship (\$1,500/semester, \$3,000/academic year) up to 4 years:

- Eligibility for renewal is dependent upon maintaining a GPA of at least 3.0, majoring in engineering/geoscience, and pursuing a career in the Oil & Gas industry

The requirements for first time applicants:

- Currently reside in Houston OR 29-county Gulf Coast area
- Enroll in an engineering or science program at a university in the Fall
- Be a current high school senior
- Minimum SAT score of 1650
- Be a U. S. citizen
- Completely fill out the scholarship form and turn in by deadline: 2/12/2014
- High school academic record
- Activities, awards and honors
- SAT and/or ACT score
- Professional reference letters
- Financial need (if applicable, not required)
- Short essay (approx. 500 words)

The process:

- Scholarship committee reviews each application
- Selected applicants are interviewed in the second round (April 2014)
- After the interviews, the scholarship committee meets and collectively decides the 2014-15 scholarship recipients (May 2014)

NOTE: Each 2014-15 first-time scholarship recipient may be eligible for a summer internship with an oil & gas company based on availability.

More Info

TO APPLY

Log on to the SPE Gulf Coast Section homepage and select the Scholarship/Internship committee page. A link to instructions and the online application are located in the center.

QUESTIONS

gcs-scholarship@spemail.org

INSTRUCTONS

<http://spegcs.org/scholarship-app/instructons/>

APPLICATON

<http://spegcs.org/forms/2014-2015-Scholarship-Application/>

Measured Solutions from
The Completion Diagnostics Company

Fracture Effectiveness?

With ProTechnics' patented tracer and imaging services you can directly measure:

- Fracture Height
- Perf Cluster Efficiency & Wellbore Connectivity
- Staging Efficiency
- Lateral Zonal Coverage
- Limited Entry Effectiveness
- Proppant Communication Between Laterals

SPECTRA[™]
STIM



SPECTRA[™]
SCAN



ProTechnics
COMPLETION DIAGNOSTICS
a division of Core Laboratories



Learn more at www.corelab.com/protechnics or call us at 713-328-2320

Build Your Team's Core Competency.

12-week modular training that adapts to your needs.



NEXt is a mark of Schlumberger. © 2013 Schlumberger. All rights reserved. 13-PT-0088

The modular 12-week shale training program from NEXt has the flexibility to meet your competency development goals for a wide range of skills and experience levels.

Our learning-by-doing approach integrates workflow, domain, and software instruction, so you can build your team's unconventional expertise.

The next course begins February 2014 in Houston.

Find out more at www.slb.com/shaletraining.



A Schlumberger Company

Integrated Energy Services ,Inc.

Robert Barba
Petrophysicist

Log Analysis
Completion Optimization

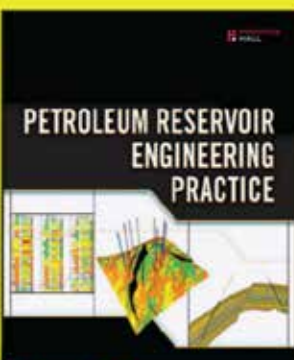
500 N. Capital of TX Hwy
Building 4-150
Austin, TX 78746
C: (713) 823-8602
F: (713) 583-9400
RBarba75@gmail.com

www.integrated-energy-services.com

The Up-To-Date,
Practical Guide to Modern
Petroleum Reservoir
Engineering by

DR. NNAEMEKA EZEKWE

Available from Amazon.com,
informIT.com, and other
fine resellers.



informIT.com



PPI
Quality & Asset
Management LLC

PETROpro
software suite

Get Compliant

Implement your SEMS program today
with Compliance Manager, part of PPI's
cutting-edge, web-accessible
PetroPro software suite.

ppitech.net

(713) 464-2200

Technical Documentation Development and Management Consulting



*Documentation help = more
available engineering time*

Technical Writing

- + Develop content
- + Multiple authors – consistent voice
- + Formatting, grammar & readability
- + Develop / edit graphics

- Quick turnaround
- On-demand resource
- Turnkey publication

Management Consulting

- + Documentation & project management
- + Procedures, processes & workflow
- + RFPs, RFQs & contract management

ZAETRIC[®]
www.zaetric.com

EVENT RECAP

We want to thank the General Meeting for submitting their photos of the Distinguished Member Award presented by SPE GCS Chair, Michael Strathman. We also want to thank the Reservoir Study Group and the Business Development group for sending in photos this month. If you would like your group to be recognized in the Connect with your wonderful photos, please send your photos by the 25th of every month to the Connect editor at editor@spegcs.org.



SPE GULF COAST SECTION DIRECTORY

Your guide to your organization leaders

Officers

CHAIR

Mike Strathman, The Trinity Group, Inc.
713-614-6227
mike-strathman@att.net

VICE-CHAIR

Jeanne Perdue, Occidental Oil and Gas
713-215-7348
jeanne_perdue@oxy.com

SECRETARY

David Flores, Consultant
281-381-5828
david_p_flores@yahoo.com

TREASURER

Robert Bruant, Jr.,
Pioneer Natural Resources Company
972-969-4573
robert.bruant@pxd.com

VICE TREASURER

Lucy King, Miller and Lents, Ltd.
713-308-0343
lking@millerandlents.com

CAREER MANAGEMENT

Patty Davis, PetroSkills
832-426-1203
Patty.Davis@petroskills.com

COMMUNICATIONS

Valerie Martone, Anadarko
832-636-3196
Valerie.Martone@anadarko.com

COMMUNITY SERVICES

Amy Timmons, Weatherford
713-836-6563
amy.timmons@weatherford.com

EDUCATION

Gabrielle Guerre, Ryder Scott
713-750-5491
gabrielle_guerre@ryderscott.com

MEMBERSHIP

Xuan (Sun) VandeBerg Harris, Consultant
832-444-5143
xuan.harris@gmail.com

PAST CHAIR

Steve Baumgartner, Marathon Oil Corp.
713-296-3190
sbaumgartner@marathonoil.com

PROGRAMS

David Tumino, Murphy Oil Corp.
281-717-5123
tuminospe@hal-pc.org

SOCIAL ACTIVITIES

Jim Sheridan, Baker Hughes
281-432-9202
jim.sheridan@bakerhughes.com

TECHNOLOGY TRANSFER

Carol Piovesan, APO Offshore
281-282-9291
cpiovesan@apooffshore.com

YOUNG PROFESSIONALS

Simeon Eburi, Chevron
simeon.eburi@chevron.com
806-544-0829

DIRECTOR 2012-14

Alex McCoy, Occidental Oil and Gas
713-366-5653
alexander_mccoy@oxy.com

Kevin Renfro, Anadarko

832-636-8613
kevin.renfro@anadarko.com

Wolfgang Deeg, Shell

281-544-8279
wjfdeeg@spemail.org

DIRECTOR 2013-15

Trey Shaffer, ERM
281-600-1016
Trey.Shaffer@erm.com

John Lee, UH

713-743-4877
wjlee3@uh.edu

Deepak Gala, Shell

281-544-2181
deepak.gala@shell.com

SPE GULF COAST NORTH AMERICA REGIONAL DIRECTOR

Bryant Muller, Halliburton
281-818-5522
Bryant.Mueller@halliburton.com

Committee Chairs

AWARDS

James Rodgerson, BP
281-221-4085
james.rodgerson@bp.com

CONTINUING EDUCATION

Nii Ahele Nunoo, NOV
507-304 5416
Nii.Nunoo@nov.com

ESP WORKSHOP

Noel Putscher, Newfield
281-674-2871
nputscher@newfield.com

GOLF

Cameron Conway, Cactus Pipe
281-217-0660
cconway@cactuspipe.com

INTERNSHIPS

Gabrielle Guerre, Ryder Scott
713-750-5491
gabrielle_guerre@ryderscott.com

NEWSLETTER

John Jackson, CCR Technologies
713-998-3121
editor@spgcs.org

SCHOLARSHIP

Tanhee Galindo, Consultant
832-693-9010
gcs-scholarship@spemail.org

SPORTING CLAYS

Paul Conover, NOV
713-346-7482
paul.conover@natoil.com

TECHNOLOGY TRANSFER

Carol Piovesan, APO Offshore
949-232-6353
cpiovesan@apooffshore.com

TENNIS

Gurjeet Jauhar, Baker Hughes
832-559-4415
gurjeet.jauhar@bakerhughes.com

WEB TECHNOLOGY

Shivkumar Patil, Aker Solutions
713-369-5352
Shivkumar.Patil@akersolutions.com

SECTION MANAGER

Kathy MacLennan, SPE-GCS
713-779-9595 x 813
kmaclennan@spe.org

Study Group Chairs

BUSINESS DEVELOPMENT

Steve Mullican, Grenadier Energy Partners
281-907-4120
smullican@grenadierenergy.com

COMPLETIONS & PRODUCTION

Mark Chapman, CARBO Ceramics
281-921-6522
mark.chapman@carboceramics.com

DIGITAL ENERGY

Rick Morneau, Morneau Consulting
281-315-9395
rickmorneau@outlook.com

DRILLING

Joe Tison, Greene Tweed
281-784-7805
wtison@gtweed.com

GENERAL MEETING

Raja Chakraborty, Shell
281-544-2148
Raja.Chakraborty@shell.com

HEALTH, SAFETY, SECURITY, ENVIRONMENT AND SOCIAL RESPONSIBILITY

Trey Shaffer, ERM
281-600-1016
trey.shaffer@erm.com

INTERNATIONAL

Owen Jones, ExxonMobil
Development Company
832-624-2019
owen.jones@exxonmobil.com

NORTHSIDE

Naval Goel
650-307-7267
navalgoel@hotmail.com

PERMIAN BASIN

Amy Timmons, Weatherford
713-836-6563
amy.timmons@weatherford.com

PETRO-TECH

Marci Nickerson, Consultant
713-446-3400
mnick52@sbcglobal.net

PROJECTS, FACILITIES, CONSTR.

Bill Kinney, Wood Group Kenny
281-646-4198
william.kinney@woodgroupkenny.com

RESEARCH & DEVELOPMENT

Skip Davis, Technology Intermediaries
281-359-8556
skdavis@technologyintermediaries.com

RESERVOIR

Sunil Lakshminarayanan, Weatherford
713-849-1861
sunil.lakshminarayanan@weatherford.com

WATER & WASTE MANAGEMENT

Kira Jones, Momenive
281-646-2827
kira.jones@momenive.com

WESTSIDE

Andrea Hersey, Momenive
281-646-2805
andrea.hersey@momenive.com

ADVERTISE IN THIS NEWSLETTER OR ON THE SPE-GCS WEBSITE

Connect is printed 12 times per year and contains premium positions for advertisers wanting to reach some of the most influential oil & gas professionals in the world. We are still selling ads for the 2013-2014 program year, and our ad sizes have been updated. Please visit the SPEGCS website for more information regarding ad pricing and specifications.

FOR INFORMATION ON ADVERTISING IN THIS NEWSLETTER OR ON THE SPE-GCS WEBSITE, PLEASE CONTACT:

Pat Stone, Star-Lite Printing, Inc
281-530-9711
starlite1@sbcglobal.net

CONNECT

Information

Newsletter Committee

CHAIRMAN | John Jackson
editor@spgcs.org

AD SALES | Pat Stone
starlite1@sbcglobal.net

BOARD LIAISON | Valerie Martone

NEWSLETTER DESIGN | DesignGood
designgood.com
designgoodstudio.com

SPE Houston Office

GULF COAST SECTION MANAGER

Kathy MacLennan | kmaclellan@spe.org

GCS ADMINISTRATIVE ASSISTANT

Sharon Harris | sharris@spe.org

HOURS & LOCATION

10777 Westheimer Road, Suite 1075
Houston, Texas 77042
P 713-779-9595
F 713-779-4216
Monday - Friday 8:30 a.m. to 5:00 p.m.

Photo Submissions

We are looking for member photos to feature on the cover of upcoming issues! Photos must be at least 9" by 12" at 300 DPI. Email your high resolution picture submissions to:
editor@spgcs.org

Change of Address

To report a change of address contact:
Society of Petroleum Engineers
Member Services Dept.
P.O. Box 833836
Richardson, Texas 75083-3836
1.800.456.6863
service@spe.org

Contact

For comments, contributions, or delivery problems, contact editor@spgcs.org.



Deeper and deeper water.
Larger projects.
More complex design challenges.
More people with highly specialized skills.
Fewer people who see the big picture.

GATE's full-service team takes a larger, systems view of the interactions and intricacies of the project as a whole. This enables us to develop solutions that cross many different disciplines and boundaries.

The result: smoother facility startups, higher up-time and reliability, less operating headaches and improved whole-life value for existing developments.

- Materials & Corrosion
- Subsea Engineering
- Offshore Risk Management
- Commissioning & Initial Startup
- Chemical Systems Engineering
- Water Injection
- Flow Assurance

www.gateinc.com



NON-PROFIT ORGANIZATION
U.S. POSTAGE PAID
PERMIT NO. 6476
HOUSTON, TX

SOCIETY OF PETROLEUM ENGINEERS
GULF COAST SECTION

10777 Westheimer Road
Suite 1075
Houston, TX 77042

CALENDAR

January 2014

<i>Sunday</i>	<i>Monday</i>	<i>Tuesday</i>	<i>Wednesday</i>	<i>Thursday</i>	<i>Friday</i>	<i>Saturday</i>
				1	2	3
				Board Of Directors General Meeting		4
5	6	7	8	9	10	11
		Northside Petro-Tech	Westside			
12	13	14	15	16	17	18
			Completions & Production	Reservoir		
19	20	21	22	23	24	25
		HSSE-SR Permian Basin	Business Development			
26	27	28	29	30	31	