



Gulf Coast Section

NOVEMBER
2013

CONNECT

SPE GULF COAST SECTION NEWSLETTER

A View From the Boardroom - Key Issues and Topics Facing Energy Company Boards

GENERAL MEETING P. 9

Produced Water Management - Waste to Value

PERMIAN BASIN P. 17

BECOME A MASTER MANIPULATOR: GETTING THE MOST FROM YOUR DATA

PETRO-TECH P. 19

WHAT CAN NANOTECHNOLOGY DO FOR THE OIL & GAS INDUSTRY?

RESEARCH & DEVELOPMENT P. 21

The Agitator™ System - Proven Friction Reduction, Improved Weight Transfer

DRILLING P. 13



CHAIRMAN'S CORNER

MIKE STRATHMAN
2013-2014 SPE-GCS Chair

The Society of Petroleum Engineers Gulf Coast section has a mission to share technical information and help members stay abreast of the industry challenges and solutions. Many of you are involved in leadership of our Study Groups and even more attend events. Please continue the good work.

Our section also invests in our community through our scholarship program, which helps many high school seniors afford college and rewards them for their academic achievements. We also invest in a variety of STEM programs (Science, Technology, Engineering and Mathematics) in primary and secondary schools to encourage students to develop these abilities. We also sponsor community service programs to enhance the public image of the oil and gas industry.

SPE-GCS Community Services Chair Amy Timmons (Amy.Timmons@Weatherford.com) is leading our Section's STEM efforts focused on students. This past October, Community Services participated in and sponsored the SkillsUSA Fall Leadership Conference, the 2013 Energy Day Festival, and Rebuilding Together Houston. Throughout the year, we will be making Energy4Me presentations in classrooms in the Houston area and sponsoring high school students taking advanced level science courses to attend our SPE study group meetings. This winter we are looking forward to the Society of Women Engineers (SWE) Conference in January 2014, the Girl's Education and Mentoring Services (G.E.M.S.) meeting in February 2014, and the EcoBot Challenge in March 2014. There are many upcoming volunteer opportunities where we could use a helping hand. To get involved and give back to our community, please contact Amy.

Our Education Committee Chair Gabrielle Guerre (gabrielle_guerre@ryderscott.com) has a mission to help teachers improve their skills in teaching STEM courses. We recognize that student academic success is highly dependent on the knowledge, skills, and enthusiasm of their teachers. That is why our Section works with the University of Houston and supports the Collaborative in Houston to Advance Science and Engineering (CHASE). Over the last six years, our support has helped more than 30 teachers improve their capability in teaching middle school Algebra. Teachers in the CHASE program receive Masters course credit and earn their MMT certification (Master Math Teacher). Middle school is a critical time for children to develop a positive experience with math, and that is an essential part of becoming an engineer!

In addition, our Section supports the Offshore Energy Center (<http://www.oceanstaroec.com/>), which runs Project E3 (Expanding Energy Education Workshops). These are educational classes that help teachers in K-12 understand our industry and the application of STEM topics. Better teachers are good for our children; and children with STEM skills will have more opportunities in a technology-driven world. Our industry will benefit from those skills when these children enter the workforce – yes, this is a win-win all the way around.

Amy and Gabrielle are the SPE-GCS leaders in these efforts this year and are supported by a powerful team of volunteers. Thank you all for your efforts to improve STEM education in our community.

THOUGHT YOU SHOULD KNOW...

In light of the above, I thought you should know about Energy4Me for your kids' or neighborhood schools. SPE invests money in tools such as Energy4Me, a kit you can personally use at your school to give a presentation about all forms of energy. Please visit <http://www.energy4me.org/> to learn more. The Energy4Me Kits can be used as teaching aids, speaker resources, sample presentations, classroom activities, and hands-on experiments for teaching energy in the classroom in a fun, exciting way. Activities for many grade levels are included, and most of the contents are available as PDF and PowerPoint downloads.



We welcome your comments and ideas to make the Gulf Coast Section better. Please contact me at mike-strathman@att.net

FEATURES

November 2013

STUDY GROUPS

RESEARCH & DEVELOPMENT

11/7/13

Using Open Innovation and Crowdsourcing in Oil & Gas Technology Development

P. 21

PETRO-TECH

11/12/13

Become a Master Manipulator: Getting the Most From Your Data

P. 19

NORTHSIDE

11/12/13

The Unconventional Learning Curve

P. 15

DRILLING

11/13/13

The Agitator™ System - Proven Friction Reduction, Improved Weight Transfer

P. 13

GENERAL MEETING

11/14/13

A View from the Boardroom - Key Issues and Topics Facing Energy Company Boards

P. 9

RESERVOIR

11/14/13

Characterizing Shale Plays – The Importance of Recognizing What You Don't Know

P. 23

PERMIAN BASIN

11/19/13

Produced Water Management - Waste to Value

P. 17

BUSINESS DEVELOPMENT

11/20/13

Tuscaloosa Marine Shale - Has the Dream Come True?

P. 11

WESTSIDE

11/20/13

Is There More Value in Number of Fracs or Greater Effective Frac Length?

P. 25

COMMITTEES

COMMUNITY SERVICE

11/1/13

HCC STEM Fair

11/12/13

2013 Career Day Expo

CONTINUING EDUCATION

Oil Patch Orientation

P. 26

YOUNG PROFESSIONALS

11/20/13

SWE & SPE Development Event: Technical Writing for Engineers with Evalyn Shea

AUXILIARY

11/8/13 & 11/20/13

November Activities

P. 27

EDUCATION

2014-2015 SPE-GCS Scholarship

P. 28

MORE

COMING IN DECEMBER

Career Management: Ethics Seminar

P. 33



UH STUDENT CHAPTER GOLF TOURNAMENT
Friday, November 15th

IN EVERY ISSUE

SPE-GCS MEMBERSHIP REPORT
September 2013

P. 5

THEN & NOW
Buddy Woodroof

P. 6

SPE GULF COAST SECTION DIRECTORY

P. 34

THU
November 7

7:30 AM TO 10:30 AM

BOARD OF DIRECTORS MEETING

LOCATION

SPE Houston Office
10777 Westheimer Rd.
Suite 1075
Houston, TX 77042

EVENT CONTACT

Sharon Harris
713-457-6821 EXT. 821
713-779-4216 FAX
sharris@spe.org

WE MAKE IT WORK RIGHT THE FIRST TIME

Deeper and deeper water. Larger projects. More complex design challenges. More people with highly specialized skills. Fewer people who see the big picture.

GATE's full-service team takes a larger, systems view of the interactions and intricacies of the project as a whole. This enables us to develop solutions that cross many different disciplines and boundaries.

We make it work right the first time.

www.gateinc.com

GATE
GIBSON APPLIED TECHNOLOGY & ENGINEERING, INC.

You drop it in the wellbore, we catch it!

Introducing ...

OPEN HOLE NET™

Protects the wellbore from metal dropped into and coming out of the wellbore!

- Installs over any API standard size annular preventer.
- Roughnecks rig it up; no operator needed.
- No power source needed.
- Operates 24/7/365. Never rests.
- Complete stainless steel construction.
- M.A.D.E.™ (Made, Assembled, Designed, Engineered) in USA.

Patent Pending

Visit Us at SPE/ATCE 2013 Sept. 30-Oct. 2 Booth #3258

Standard Drop Test Set

5D Oilfield Magnetics™

Premier Magnetic Applications in Drilling Completion and Production Operations
sales@5doilfieldmagnetics.com • 337.466.7400

www.5doilfieldmagnetics.com

MULTI-STAGE FRACTURING

“If you think it’s expensive to hire a professional... wait until you hire an amateur” - Red Adair

Our track record includes running over 11,650 open hole StackFRAC® ball drop systems accounting for over 146,200 fracture stages. Contact us today and let us help you maximize your assets.

DO IT ONCE. DO IT RIGHT.

Packers Plus®
www.packersplus.com

Slider

Automated Directional Drilling

IMPROVE YOUR HORIZONTALS

- ON-BOTTOM TOOL FACE ORIENTATION
- INCREASED MOTOR LIFE
- INCREASED ROP & HORIZONTAL REACH CAPABILITY
- ELIMINATES ORIENTATION TIME LOSSES

slb.com/Slider

Integrated Energy Services ,Inc.

Robert Barba
Petrophysicist

Log Analysis
Completion Optimization

500 N. Capital of TX Hwy
Building 4-150
Austin, TX 78746
C: (713) 823-8602
F: (713) 583-9400
RBarba75@gmail.com

www.integrated-energy-services.com

SPE-GCS MEMBERSHIP REPORT

September 2013

SEPTEMBER 2013

Total: 15,699

YP: 3,523

AUGUST 2013

Total: 15,245

YP: 3,321

SPE-GCS Members	AUGUST		JULY	
	Total	YP	Total	YP
New Members	68	38	140	82
Reinstated	0	0	1	1
Transferred to Section	6	2	10	7
Unpaid	2,241	746	2,371	794

Student Members	AUGUST		JULY	
	Paid	Unpaid	Paid	Unpaid
Texas A&M	836	178	646	200
Rice	49	2	405	82
HCC	83	13	85	13
UH	382	50		
Total	1,350	243	1,136	295

Total Paid/Unpaid	17,049	2,484	16,381	2,666
% Paid	87.3%		86.0%	

A LETTER FROM YOUR SPE-GCS MEMBERSHIP CHAIR

Xuan VandeBerg Harris

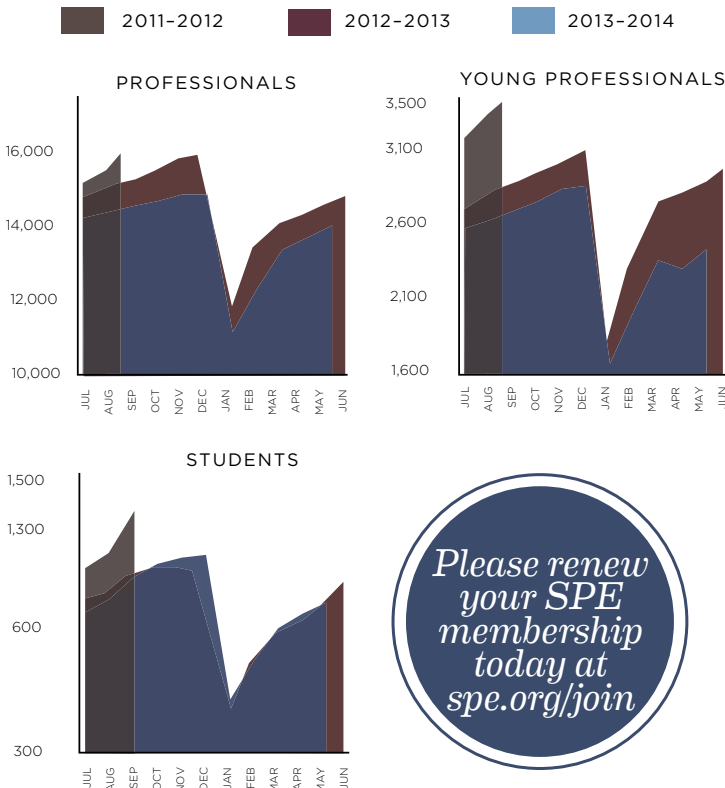
Welcome to a new season of opportunities! We have ongoing monthly engagements to help encourage our SPE-GCS Connect readers to actively participate in one of the largest and most active SPE sections.

Are you always on the go but not sure what is happening in the upcoming months? Look online to see what Study Groups of interest are hosting every month and register for an event today. We have several specialized focus groups to provide members and guests in transferring knowledge management on technical / technology topics. We share best practices, lessons learned, solutions and resources of common interest.

Want to expand your network of peers by doing something positive in the Greater Houston Area? Try out the "Filter by Type" feature on the online Events Calendar to view what volunteering events are coming up, organized by Chair, Amy Timmons of Community Services and Chair, Simeon Eburu of the Young Professionals. Many of the Community Services volunteer events concentrate on supporting primary and secondary schools to expose students to S.T.E.M. (Science, Technology, Engineering and Mathematics) programs. The Young Professionals' mission is to engage and develop the next generation of leaders in the oil and gas industry to sustain the talent pipeline. Gabrielle Guerre, Chair of the Education Committee, invests the section's funding towards helping to recruit, train and retain engineers for the oil and gas industry. The Education Committee works in collaboration with many of the S.T.E.M. initiatives with Community Services to provide a strong and healthy resource to students in engineering programs at the community college and university levels.

Interested in a lunch and learn session on how SPE benefits your colleagues in your workplace? Would you be interested in sharing your story about how SPE has helped you in your career? Contact YP Membership Chair, Chris Zinn and/or Xuan VandeBerg, GCS Membership Chair for more information.

Got a smartphone? Stay connected with SPE-GCS online (website spegcs.org) and/or download the SPE-GCS Young Professional mobile app for the most up to date information at your fingertips!



THEN & NOW

Column by
BUDDY WOODROOF



The Stanford Research Institute predicts that the U.S. will be on the metric system by the end of the century at a cost of \$16 billion, and in the process, will experience increased business productivity, better international relations, and faster calculations by engineers. (How in the world have we managed to compete for all these years without employing meters and Pascal's...American ingenuity or American stubbornness?)

Oil company R&D labs (Remember them?) undertake an all-out attack on production problems associated with planned subsea wells that are predicted to increase in number as the industry pursues deeper water completions in the Gulf of Mexico.

Non-oil producing states' Congressmen take aim on depletion allowances afforded the industry, stating that in their opinion the industry doesn't pay enough taxes.

Gulf reports plans to drill a second well on the northeastern edge of the Great Salt Lake in Utah. (Talking about subsalt!).

U.S. active rig count – 1,569



The Saudis open their oil spigot in an apparent attempt to persuade Iran and the United Arab Emirates that there is no alternative to returning to official OPEC quotas.

Mexico and Norway threaten to abandon their voluntary output cuts if OPEC continues to fail to maintain their agreed upon quotas.

Placid Oil and partners shatter the world water depth production record with their subsea satellite well in 2,243 ft of water in a Green Canyon block in the Gulf of Mexico.

The front running candidate in Venezuela's presidential elections, Carlos Andres Perez, sends shivers through the state-controlled oil industry by stating that he prefers that executives from outside the industry should run Pdvsa and that he would halt Pdvsa investments in overseas refineries.

WTI crude oil - \$13.74/bbl; U.S. active rig count – 942



According to the U.S. Energy Information Administration, U.S. gas reserves increased 2% in 2002, primarily on the strength of the Barnett shale in Texas, tight gas sands in Wyoming and Colorado, and coalbed methane projects in Colorado.

Former New Jersey governor and current EPA head Christine Whitman steps down from her EPA role after losing several battles with other members of the Bush Administration over climate change policy and clean air permitting. She is to be replaced by Utah Governor Mike Leavitt.

Unocal reports a major hydrocarbon discovery on its deepwater St. Malo prospect in a \$62 million discovery well drilled in 6,900 ft of water in the Gulf of Mexico.

Louisiana lawmakers report that they will seek \$14 billion of federal funding for a coastal wetlands-rehabilitation project designed to slow the subsidence of coastal Louisiana into the Gulf of Mexico. (See...it's not just the left coast that is falling off into the ocean.)

Light sweet crude oil - \$29.19/bbl;
Natural gas - \$4.61/MMbtu; U.S. active rig count – 1,107

THE REST OF THE YARN

THIS MONTH WE TAKE A LOOK BACK AT A TRAGIC MISTAKE ASSOCIATED WITH THE ROCKEFELLERS.

One of the most terrible labor conflicts in American history occurred at the Rockefeller-owned coalfields in Colorado in 1914.

When some 11,000 miners went on strike demanding unionization, both John D. Rockefeller and his son, John Jr., ordered their managers to dig in their heels. Unfortunately, the Rockefellers were far away in New York and failed to grasp the seriousness of the situation. With both the miners and the mine operators heavily armed, the Colorado National Guard was called in.

At dawn on April 20, 1914, someone fired a shot in Ludlow, where the strikers were camped with their families, watched by the soldiers.

Within seconds, the conflict escalated into heavy gunfire. Soldiers, apparently drunk, ran through the camp setting fire to the tents with kerosene, unaware that women and children were hiding in foxholes beneath their tents to escape the bullets. Two women and 11 children were killed in what came to be known as the “Ludlow Massacre.”

John Jr., chastened by the tragedy, eventually accepted workers’ rights, but his father never lost his hatred of unions. The miners went on strike repeatedly in subsequent years, finally winning unionization in 1933.

Then & Now November

QUIZ

What field was the site of California’s first true horizontal oil well?

Answer to October’s Quiz

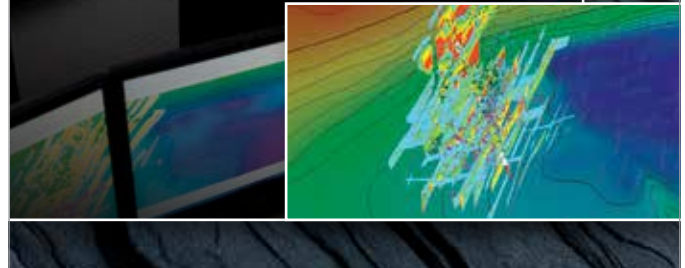
In the early days of refining crude oil, sulfuric acid was used to purify distilled kerosene.

**Congratulations to
September’s Winner
DENNIS ROME WITH CRESCENT
DIRECTIONAL DRILLING**

If you would like to participate in this month’s quiz, e-mail your answer to contest@spe.org by noon, November 15th. The winner, who will be chosen randomly from all correct answers, will receive a \$50 gift card to a nice restaurant.

Mangrove

RESERVOIR-CENTRIC STIMULATION
DESIGN SOFTWARE



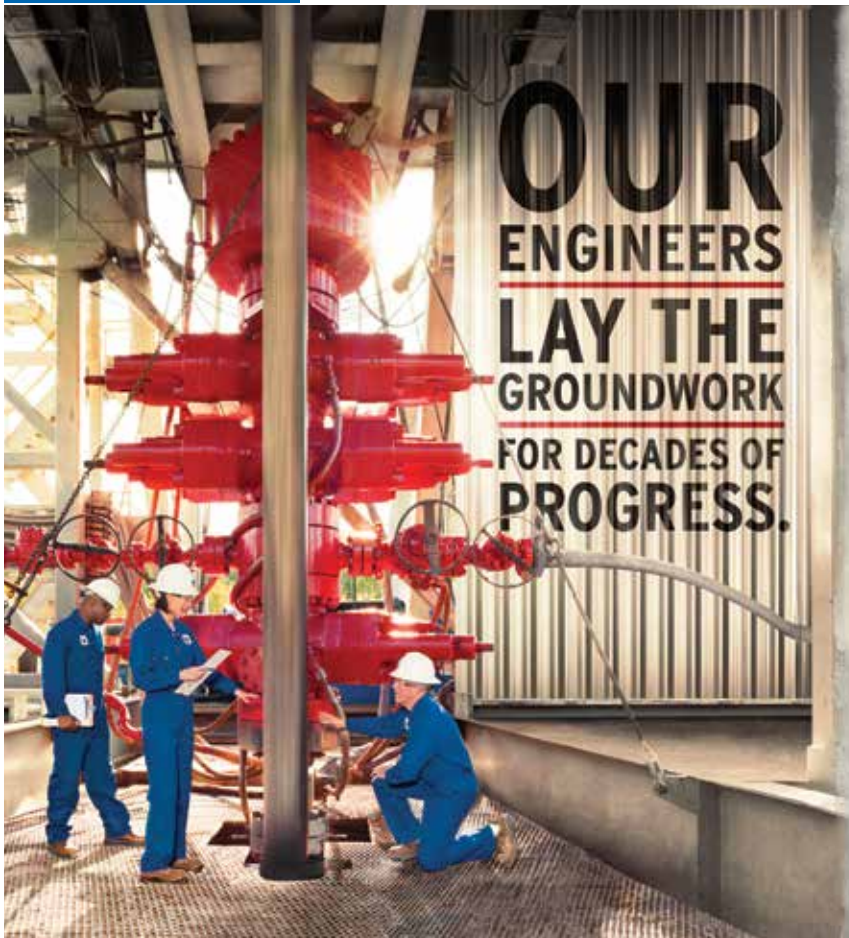
At last, a stimulation design software that can model the complexities of unconventional plays.

With Mangrove* software, you can integrate all your reservoir data into the Petrel* E&P software platform and get fast, accurate simulations in complex, unconventional reservoirs. Mangrove software links reservoir characterization, stimulation, and production, showing you how to complete and stimulate your well for maximum ROI.

Engineered staging and perforating designs helped PDC Mountaineer increase production more than 50%.
“PDCM will not complete any lateral Marcellus wells without first running this service and evaluating the results.”
—Dewey Gerdom, CEO, PDC Mountaineer.

Find out more at
slb.com/Mangrove

Schlumberger



**OUR
ENGINEERS
LAY THE
GROUNDWORK
FOR DECADES OF
PROGRESS.**

At Chevron, you'll join a team with the technology to take on big challenges, the integrity to do it responsibly, and the drive to keep the world moving forward. If you're up to the job, visit chevron.com/careers

Chevron is seeking experienced petroleum engineers for production, reservoir, reservoir simulation, drilling and completions positions.

**JOIN THE
CHALLENGE.**



Human Energy

An equal opportunity employer that values diversity and fosters a culture of inclusion. CHEVRON, the CHEVRON Hallmark and HUMAN ENERGY are registered trademarks of Chevron Intellectual Property LLC. © 2013 Chevron U.S.A. Inc. All rights reserved.



**When time is money,
Wellsite Geoscience is
money well spent.**

Whether you're exploring a basin, producing a well or completing a shale play, time is money. That's why Weatherford Laboratories brings a suite of formation evaluation technologies right to the wellsite. Utilizing mud gas and cuttings, these technologies provide detailed data on gas composition, organic richness, mineralogy and chemostratigraphy in near real time. As a result, operators now have an invaluable tool to assist with sweet spot identification, wellbore positioning, completion design and hydraulic fracturing. We call it Science At the Wellsite. You'll call it money well spent.

SCIENCE AT THE WELLSITE™
www.weatherfordlabs.com

Formation Evaluation | Well Construction | Completion | Production



©2013 Weatherford. All rights reserved.

RPS Knowledge Reservoir

- Consulting
- Technical Projects
- Resourcing
- Unconventional
- Conventional
- Deepwater
- Production Solutions
- Knowledge Management

knowledge-reservoir.com

ELY

Global Hydraulic Fracturing Expertise

281-530-4010
www.elyfrac.com

A View From the Boardroom - Key Issues and Topics Facing Energy Company Boards

The global paradigm is shifting, and energy companies with distinctive strategies are building sustainable competitive advantages. Suzanne Nimocks provides an insight into the current state of energy boardroom thinking by exploring the most pressing topics and issues facing energy players today.

Suzanne Nimocks

Suzanne is a member of the Board of Directors for Encana, a natural gas exploration and production company based in Calgary, Canada, London-domiciled drilling contractor Rowan Companies Plc., ArcelorMittal, the world's largest steel company based in Luxembourg, Owens Corning, a Fortune 500 building products company based in Toledo, Ohio, and Valerus, a privately-held natural gas compression company based in Houston. Suzanne also serves as a Senior Advisor to Rothschild in their North American oil and gas practice.

Suzanne retired in July 2010 as a Director (senior partner) in McKinsey & Company's Houston Office. Since joining the Firm in 1989, she served clients in energy, logistics, manufacturing, and professional services industries on a broad range of strategy, corporate finance, business building, portfolio management, operations, organization, and risk management-related issues.

In addition to client work, Suzanne was a leader in the Firm's Global Petroleum Practice, Electric

Power & Natural Gas Practice, as well as the Global Organization Practice. She served on several of the firm's worldwide personnel committees for many years and formerly served as the Houston Office Manager.

Prior to joining McKinsey, Suzanne spent two years with the New York and London Offices of Strategic Planning Associates. In addition, she spent four years as an Account Executive with Travelers.

Suzanne chairs the board of the Houston Zoo and is a Trustee for Texas Children's Hospital. She is a former board member of the Greater Houston Partnership, United Way of the Texas Gulf Coast and the American Heart Association, and a former Trustee of the St. John's School in Houston.

Suzanne holds a Bachelor of Arts degree in Economics from Tufts University and a Masters in Business Administration from the Harvard Graduate School of Business.



Event Info

SPEAKER

*Suzanne Nimocks
Board of Directors, Encana,
Rowan Co. Plc, Valerus,
Owens-Corning, ArcelorMittal*

LOCATION

*Petroleum Club
800 Bell Street, 43rd floor
Houston, TX 77002*

EVENT CONTACT

*Barry Faulkner
281-627-8790
barryfaulkner@earthlink.net*

MEMBERS

\$35

NON-MEMBERS

\$40

PATENTED
proNovaTM by **TDE**

DRILLING PERFORMANCE

Drilling Tracking Report

CREW PERFORMANCE MEASUREMENTS

AUTOMATIC OPERATIONS DETECTION

INVISIBLE LOST TIME DETECTION

281.755.7595
www.pronova-tde.com

Measured Solutions from The Completion Diagnostics Company

Flowback Profile?

With ProTechnics' patented chemical analysis you can directly measure:

- Fracture Clean-up/ Flowback Efficiency
- Lateral Flow Assurance
- Offset Well Interference/ Communication
- Optimize After Frac Clean-Up

SPECTRA[®] CHEM

ProTechnics
COMPLETION DIAGNOSTICS
 a division of Core Laboratories

Learn more at www.corelab.com/protechnics or call us at 713-328-2320

Core Lab[®]

Build Your Team's Core Competency.

12-week modular training that adapts to your needs.

The modular 12-week shale training program from NExT has the flexibility to meet your competency development goals for a wide range of skills and experience levels.

Our learning-by-doing approach integrates workflow, domain, and software instruction, so you can build your team's unconventional expertise.

The next course begins February 2014 in Houston.

Find out more at www.slb.com/shaletraining.

NExT
 A Schlumberger Company

NExT is a product of Schlumberger. © 2013 Schlumberger. All rights reserved. 13-17-1088

ULTEERRATM

When Every Run CountsTM

www.ulterra.com +1 817 293 7555

HYDRAWELL
 ONE INVENTION AHEAD

P&A Specialists and Design Engineering Services

HydraWash[™] One-Trip Cementing System

www.hydrawell.com
 Email us at info@hydrawell.com

Tuscaloosa Marine Shale - Has the Dream Come True?

Join us for a networking hour, with complimentary hors d'oeuvres and a cash bar, followed by an hour-long program beginning at 5:00 pm in the Mezzanine.

The Tuscaloosa Marine Shale has been gaining momentum as Goodrich, Sanchez, and others have acquired 1.3 million contiguous acres. On paper the TMS sounds like a dream come true – premium pricing and existing infrastructure enable operators to move their product quickly to market. Our speakers will address their companies' strategies for expansion and exploitation of the TMS as they convert their dream into reality in what could be the next top performing unconventional play.

What are best practices utilized elsewhere which are transferable to the TMS? What steps are being taken to enhance completion design and increase EURs? How will the varying severance tax incentive policies affect decisions compared to other areas? What are the biggest competitive threats and opportunities? Is this becoming the next Eagle Ford?

Robert C. Turnham, Jr

Mr. Turnham, Jr. has served as Goodrich Petroleum Corporation's President and Chief Operating Officer since August 1995 and is a member of its Board of Directors. Prior to 1995, Mr. Turnham was President of Liberty Production Company, a privately held oil and gas exploration and production company, and Turnham Interests, Inc., an oil and gas investment company. Mr. Turnham started his career with Pennzoil Company in 1981. Mr. Turnham has served on various private company and non-profit boards over the years.



Kirk A. Barrell

Mr. Barrell serves as Managing Partner of Amelia Resources LLC and Wave Exploration LLC. Mr. Barrell began his employment with Amoco Production Company and has worked for several small independents as a prospect-generating geologist. He has 27 years of extensive experience in all phases of oil and gas exploration relating to geology and geophysics. Mr. Barrell's years of energy experience, combined with his multi-disciplinary background, business know-how and extensive energy contacts, has allowed him to develop a proven track record in the building of successful energy-related companies.



Joseph DeDominic

Mr. DeDominic has served as Sr. VP and COO since November 2012. Mr. DeDominic has 25 years of experience in the energy industry and, prior to joining Sanchez, he served as President, and General Manager at Williston BU for Occidental. At Oxy, Mr. DeDominic served in positions of increasing responsibility, including Business Development and North America Growth, where he led Oxy's entry into the Williston Basin. Mr. DeDominic has a BA Geology from University of Montana and an MS Geology from Texas A & M.



Event Info

SPEAKER

*Robert C. Turnham, Jr.
President and CEO
Goodrich Petroleum Corporation*

*Kirk A. Barrell
President
Amelia Resources LLC*

*Joseph DeDominic
Sr. VP and COO
Sanchez Energy Corporation*

LOCATION

*Four Seasons Hotel
1300 Lamar
Houston, Tx 77010*

EVENT CONTACT

*Ricardo Concha
713-890-1418
ricardo.concha@credit-suisse.com*

MEMBERS

\$40 in advance, \$50 at door

NON-MEMBERS

\$45 in advance, \$50 at door

We're GROWING...

Introducing our Total Managed Displacement Services (TMDS™):

Our proprietary suite of wellbore cleanout tools, non-pollutant displacement chemicals, surface pit cleanout and fluids filtration services, and direct job validation.

Delivering the ultimate clean wellbore for maximizing completion success.



www.abrado-intl.com
Email us at: info@abrado-intl.com

- New drilling and completion technologies
- Custom-engineered solutions
- Fit-for-purpose manufacturing
- Faster response.

www.tiwtools.com
ENGINEERED TO FIT



TIW CORPORATION A Pearce Industries Company

Providing Engineered Solutions

281.955.2900
www.stress.com



STRESS ENGINEERING SERVICES INC.
DESIGN • ANALYSIS • TESTING

LUFKIN

Expect More
More **SYSTEMS**
More **SERVICES**
More **LOCATIONS**



Pump jacks with legendary quality and reliability have been the reputation of Lufkin for more than 100 years. In that same tradition, Lufkin now offers more artificial lift systems, more support services and more locations to serve operators around the world. These highly engineered solutions, supported by our experienced staff, deliver optimum production from your oil and gas wells.

Now, more systems and services to meet your requirements:

- Automation
- Beam Pumping Units
- Hydraulic Pumping Units
- Reciprocating Pumps
- Progressing Cavity Pumps
- Production Optimization
- Well Monitoring
- Secure Scada
- Plunger Lift
- Gas Lift
- Completion Products
- Maintenance & Repair
- Training

The Energy Flows Through Us®
LUFKIN.COM

The Agitator™ System - Proven Friction Reduction, Improved Weight Transfer

The Agitator™ System is known as an essential drilling tool which breaks static friction to improve drilling conditions in wells where friction is an issue. The Agitator System can be used in a diverse range of applications, including fishing in both the drilling and work-over phases of a wells life cycle. To date, the Agitator System has aided in the recovery of a completion ESP, RSS tools, sliding sleeves, perforating guns and MWD tools containing radioactive sources. These activities have saved clients drilling, production time, and in some cases, assisting in recovering a producing well which may otherwise have had to be re-drilled. A key part of the system is the ability to create an axial vibration which can be transferred into the fish and create a harmonic state within the fish. By exciting drill string resonances of the fish during the axial excitation process, it is possible for the tubular retrieval fish to behave as a dynamic vibration absorber—a characteristic of which is to increase its response amplitude. This will effectively enhance the fluidizing process where media is holding the fish and will also enhance the transition from static to dynamic friction. By producing a harmonic state within the fish the ability of the standard fishing operations which includes jarring and over pull are improved. Agitators range in size from 2 1/8" to 9 5/8", servicing coiled tubing and conventional rigs.

Timm Burnett

Timm Burnett began his oilfield career in 1993 with Dailey Oil Tools. He has held various positions of increasing responsibility in sales, service, and product specialist roles, concentrating on the use of down hole tools to reduce down hole friction and mitigate vibrations. In 2004, he joined NOV through the acquisition of Grant Prideco and Andergauge. At Andergauge, he was involved in the implementation of the Agitator tool into the US horizontal and coil tubing markets starting in 2007. He has authored several SPE papers regarding the use of friction reduction tools and vibration mitigation tools. Timm has a Master's degree in Marketing from the University of Phoenix.



Event Info

SPEAKER

*Timm Burnett,
Specialist of the Agitator System
NOV*

LOCATION

*Greenspoint Club
16925 Northchase Dr.
Houston, Texas 77060*

EVENT CONTACT

*Joe Tison
wtison@gtweed.com*

MEMBERS

\$35

NON-MEMBERS

\$45



SHAWCOR TO BE SURE

Increase the reliability of your pipeline project with Flexpipe Systems' proven solutions

Flexpipe Systems' corrosion resistant linepipe products:

- Are available in 2", 3" and 4" ID
- Have rating pressures up to 2,000 psi
- Operate in temperatures up to 180°F (82°C)
- Come in spoolable or reel-less packaging

With over 55 million feet of linepipe and 80,000 fittings installed worldwide, we have the answers for your next pipeline challenge.

ShawCor - when you need to be sure

 **FLEXPIPE SYSTEMS**
A SHAWCOR COMPANY
flexpipesystems.com

 **SHAWCOR**
ENERGY SERVICES • GLOBAL SOLUTIONS
shawcor.com

SEE THE ENERGY WITH TGS' DATA INTEGRATION SOLUTION

See and access all of your G&G data with Volant, TGS' geoscience data and application integration solution.

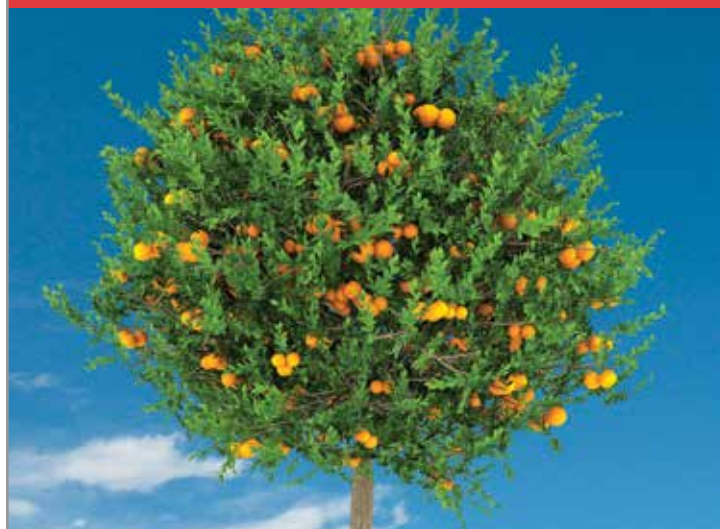
For more information contact TGS at:
Tel: +1 713 860 2100
Email: info@tgs.com



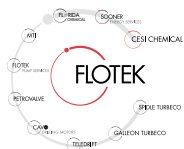
WWW.TGS.COM
© 2013 TGS-NOPEC GEOPHYSICAL COMPANY ASA. ALL RIGHTS RESERVED.



ORANGE IS THE NEW GREEN



Flotek's citrus-based, environmentally friendly **CnF**® fracturing additives will revolutionize the way the world thinks about fracturing and will improve your production.



For more information contact
cesimkt@flotekind.com
or call
832-308-CESI (2374)

VIKING ENGINEERING, L.C.

CRITICAL WELL ENGINEERING CONSULTING SERVICES

- PETROLEUM CONSULTING
- HPHT WELL DESIGN
- APB ANALYSIS
- PROJECT MANAGEMENT
- FAILURE ANALYSIS
- TRAINING

VIKING'S TEAM OF HIGHLY TRAINED
PETROLEUM PROFESSIONALS
LEND THEIR EXPERIENCE TO
CREATIVE WELL DESIGNS.

**WE CAN HELP PLAN AND
EXECUTE YOUR TOUGH WELLS.**

VISIT OUR WEBSITE: WWW.VIKINGENG.NET
OR CALL: (281) 870-8455 IN HOUSTON

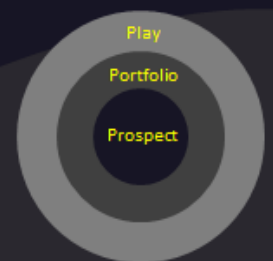
Rose & Associates

Courses Consulting Software
Improving E & P Effectiveness

**Unconventional Resource
Valuation Course (3 to 5 days)**

UCRA Software
To model, value and risk
drilling in resource plays

lisaward@roseassoc.com



TUE
November 12

11:30 AM TO 1:00 PM

The Unconventional Learning Curve

Moore's law is one of the most famous observations in computer hardware history. The law is based on work by Gordon Moore in 1965 when he noted that transistors on integrated circuits double approximately every two years. While we no longer talk about transistors, this correlation for computing power has continued through almost four decades.

This presentation will discuss the learning curve already established by the unconventional paradigm. The learning pace has some things in common with Moore's law and provides important clues about future unconventional production and how the industry might approach future technologies.

Steven L. Mueller

Steve Mueller is the President and Chief Executive Officer of Southwestern Energy Company. In 2008, he joined the company as President and Chief Operating Officer and was named Chief Executive Officer in May 2009. Mr. Mueller also became a Director of the Company in July 2009. Mr. Mueller serves on the boards of America's Natural Gas Alliance, the American Exploration and Production Council and the Independent Petroleum Association of America.



Event Info

SPEAKER

*Steven L. Mueller
President and CEO
Southwestern Energy*

LOCATION

*Greenspoint Club
16925 Northcase Drive
Houston, Texas 77060*

EVENT CONTACT

*Matthew Strom
281-618-7848
Matthew_Strom@swn.com*

MEMBERS

\$35

NON-MEMBERS

\$40

Reaching Deeper

With the largest fleet of deep, high-pressure coiled tubing, coupled with basin-specific expertise

Going Further

To find solutions to our customers' wellsite challenges, safely and efficiently

That's the IPS Advantage



Integrated Production Services

www.ipsadvantage.com

TAM SOLUTIONS

PROVEN, PREDICTABLE, PACKER PERFORMANCE



TAM PosiFrac™ Systems:

With PosiFrac™ you have an all-inclusive, multi-stage system for open-hole hydraulic fracture applications. And you have the experts to run it from service centers in your region. You'll get your completion on depth, on time, with the best swellable packers available. And that's as complete as it gets.



TAM INTERNATIONAL
Inflatable and Swellable Packers
45 YEARS OF SUCCESS

WELL INTERVENTION | DRILLING & COMPLETIONS | UNCONVENTIONAL RESOURCES | RESERVOIR OPTIMIZATION

www.tamintl.com

DEDICATED TO DELIVERING
STRATEGIC VALUE FOR
OUR CLIENTS.



We are an independent, multi-disciplined
technical consultancy servicing the international
oil and gas industry.

- OPERATIONS ASSURANCE
- SUBSEA PRODUCTION REALIZATION
- FLOW ASSURANCE
- SEPARATION SYSTEMS
- GAS TREATMENT & TRANSPORT
- PRODUCED WATER MANAGEMENT
- SAND & SOLIDS MANAGEMENT
- CONTAMINANTS MANAGEMENT
- CHEMICAL MANAGEMENT
- PROCESS/PRODUCTION OPTIMIZATION
- PROCESS TROUBLESHOOTING
- OPERATIONS PERFORMANCE STRATEGY (OPS)
- SYSTEMS AWARENESS TECHNICAL TRAINING

MAXIMIZING PERFORMANCE THROUGH OPERATIONAL EXCELLENCE

contact@maxoilsolutions.com • www.maxoilsolutions.com

KRYPTOSPHERE™

More space
to flow™

KRYPTOSPHERE ultra-conductive, ultra-high strength proppant technology

KRYPTOSPHERE provides twice the baseline conductivity of high-strength proppants at 20,000 psi closure stress. Precision-engineered, mono-sized proppant spheres with exceptional strength, durability and smoothness create more space to flow within your fractures. By maintaining increased conductivity for the life of your deepwater well **KRYPTOSPHERE** delivers higher production, increased EUR and greater ROI.

carboceramics.com/kryptosphere

CARBO®

Production. Enhanced.

Evaluation of Horizontal Wells in the Eagle Ford Using Oil-Based Chemical Tracer Technology

Horizontal well positioning through a target formation can have a significant impact on overall productivity from an unconventional oil well. This presentation will present the evaluation of two horizontal wells completed in the oil section of the Eagle Ford Shale. These wells were completed using similar completion designs (hybrid frac design) with the method and number of frac stages determined by the geology, petrophysical, or geomechanical data.

The presentation will describe how conventional analysis technologies, including completion, flowback, and production data were compared to the relative oil flow from each stage measured using a recently developed hydrocarbon tracer technology to provide critical information on optimal well path design for use during future well development.

The stage production data provided by the use of hydrocarbon-based tracers allows engineers to modify and improve their completion and stimulation programs. This presentation will highlight tracer response interpretations of the two wells presented and the current status of the hydrocarbon-based tracer technology for hydraulic fracturing applications.

Jon Spencer

Jon Spencer has 35 years of experience in the oil patch, 15 years with Halliburton as a wireline engineer performing open hole, cased hole and production logging services. He has spent the past 20 years with Tracerco performing both upstream and downstream tracer projects. Currently as the Upstream Technical Advisor, he designs and analyzes the performance of tracer projects for both waterflood/gasflood interwell applications and for frac/stimulation applications. Tracerco has performed a number of tracer-tagged frac projects from Texas to Alberta.

Event Info

SPEAKER

Jon Spencer
Upstream Technical Advisor
Tracerco

LOCATION

Norris Westchase Center
9990 Richmond Ave., Suite 102
Houston, Texas 77042

EVENT CONTACT

Amy Timmons
713-836-6563
Amy.Timmons@Weatherford.com

MEMBERS

\$35 (\$40 Walk-Ins)

NON-MEMBERS

\$40 (\$45 Walk-Ins)

DRILLING TOOLS

Meeting your exacting requirements.

Mud motors | Non-magnetic drill collars | Stabilizers | Subs



www.huntingplc.com

© 2013 Hunting

PRODUCTIONER

USED BY EVERYONE,
FROM THE FIELD PUMPER
ALL THE WAY UP TO MANAGEMENT

What our customers are saying:
"Productioner is a great data repository and analysis tool. Data entered in the field is immediately available to corporate office."

- FEATURES**
- FIELD DATA CAPTURE
 - ALLOCATIONS
 - REPORTS & GRAPHS
 - CUSTOMIZABLE TEMPLATES
 - FULLY MANAGED SERVICE



Mi4 Corporation
Ph: (713) 401-9584
sales@productioner.com
www.productioner.com



24/7 SUPPORT HOTLINE (866) 421-6665



Geosteering Services

Highly qualified personnel with 20+ years DD & LWD experience

24/7 Real-time monitoring or reports from LAS files

Proprietary software

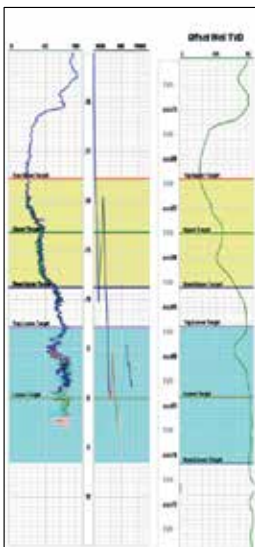
Geosteering Software

TST interpretation for GR only measurements

Image displays / interpretation of azimuthal GR, resistivity or density measurements

Resistivity modelling / interpretation for LWD propagation resistivity

Software sales, training and technical support



info@geosteering.com

Call 281 573 0500

VIBRATION TECHNOLOGY
LEADING THE INDUSTRY IN STUCK PIPE RECOVERY
INNOVATIVE TECHNOLOGY FOR REMOVING STUCK TUBULARS

- + WORKOVER
- + COMPLETIONS
- + DRILLING

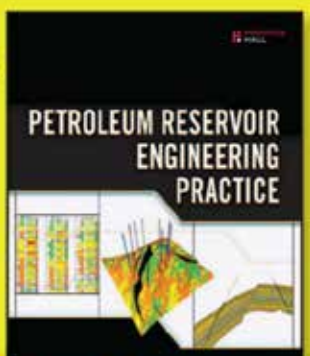


www.layne.com

The Up-To-Date,
Practical Guide to Modern
Petroleum Reservoir
Engineering by

DR. NNAEMEKA EZEKWE

Available from Amazon.com,
informIT.com, and other
fine resellers.



PRENTICE HALL

informIT.com

Become a Master Manipulator: Getting The Most From Your Data

Join us for lunch as Ashley speaks to us regarding large-scale data manipulation, and how to leverage Microsoft Office tools to optimize your data and processes specific to the upstream industry. Quick tips and tricks, and an introduction to automating processes will be covered.

QED specializes in training for the petro-technician; you can preview their courses at QEDea.com.

Ashley Northrup

Ashley has leveraged her extensive industry experience with her entrepreneurial spirit to develop products and services for QED allowing the company to reach new markets.

Ashley began her career in the oil industry at Marathon Oil Company working in the Corporate Reserves Group. She expanded her experience and database management knowledge through positions at Newfield Exploration and Anadarko Petroleum Corporation. Ashley is a super user of multiple economics systems, and an expert in Microsoft Access and Excel. Ashley earned her MBA from the University of Houston with honors, and received a Bachelor of Science with a double major in Biology and Theology from Houston Baptist University.

TUE
November 12

11:30 AM TO 12:30 PM



Event Info

SPEAKER

Ashley Northrup
CFO
QED Energy Associates

LOCATION

Sheraton Brookhollow Hotel
3000 North Loop West
Houston, TX 77092

EVENT CONTACT

Marci Nickerson
713-446-3400
marci.nick@gmail.com

MEMBERS

\$38

NON-MEMBERS

\$48



Trying to make sense of the U.S. Water Market?

Water Market Opportunities Report

Play-by-play market sizes
Regulatory trends
Analysis on major players
Insight into business models

water acquisition
water transfer
water storage
water treatment
water hauling
water disposal



ihs.com



cap-res.com

Maria Bertram, IHS

1-781-301-9438

maria.bertram@ihs.com

PetroSkills®

Build Your Foundation

To maximize convenience, PetroSkills will deliver our most popular courses a few more times in Houston before the end of 2013



- **Basic Petroleum Engineering Practices – BE:**
Nov 18-22
- **Production Operations 1 – P01:**
Dec 2-13
- **Applied Reservoir Engineering – RE:**
Nov 4-15, Dec 2-13
- **Completions and Workovers – CAW:**
Nov 11-15

For details on these or our other 250 sessions in the Gulf Coast, contact Patty Davis, (832) 426-1203 or patty.davis@petroskills.com, or see details and full selection at www.petroskills.com

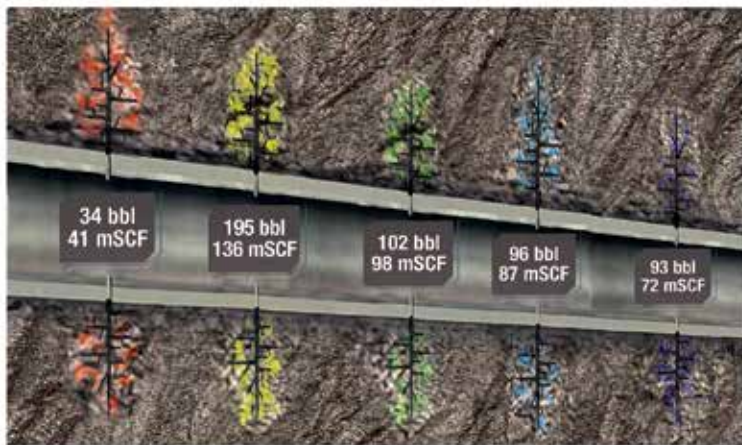
Did you get your copy of our 2013-14 Training Guide?
If not, sign up for free at www.petroskills.com/contact



Measure Hydrocarbon Stage Production ...No tools, coiled tubing or wireline



Providing Insight Onsite



Tracer technology to evaluate stimulation and well design:

- ❖ Measure actual oil and gas production per stage
- ❖ Results equivalent to 30+ days of production logging
- ❖ Diagnose fracture communications to offset wellbores
- ❖ Confirm toe flow to verify release of all plugs

Knowing what's going on at the bottom keeps you on top.

To learn more call or email:
Tel: 281 291 7769
Email: reservoir@tracerco.com
www.tracerco.com/reservoir-characterisation



Reservoir Technologies



Using Open Innovation and Crowd Sourcing in Oil & Gas Technology Development

There has been a lot of hype about open innovation and crowdsourcing over the years. The term “open innovation” comes from the book of the same title by Dr. Henry Chesbrough. Results from applying open innovation and crowdsourcing have been mixed. Skip will discuss different approaches to ideation, open innovation and crowdsourcing. He will then give examples of how these concepts are being used to develop new technology in oil & gas. The presentation will also outline some of the key elements of an effective open innovation program.

Skip Davis

Skip currently serves as a Principal with Technology Intermediaries. Skip has over 25 years of experience in research, management and consulting. He is currently working with companies that need to develop new technology to stay ahead of the competition. His focus is on the ideation through development steps of the technology development process.

Before taking on his current role at Technology Intermediaries, Skip spent seven years at Nine-Sigma, an open innovation services company. In

prior years Skip was with Capgemini and before that worked for ABB and Lockheed in both research and management roles.

Skip earned a Masters in Electrical Engineering from Georgia Tech and an MBA from the University of Houston. He is a member of the Society of Petroleum Engineers.

Event Info

SPEAKER

Skip Davis
Principal
Technology Intermediaries

LOCATION

Norris Westchase Center
9990 Richmond Ave., Suite 102
Houston, Texas 77042

EVENT CONTACT

Skip Davis
281-359-8556
skdavis@technologyintermediaries.com

MEMBERS

\$35

NON-MEMBERS

\$40

www.intertek.com



Upstream Services

6700 Portwest Drive | Houston, TX 77024
 713.479.8400
westportservices@intertek.com



Engineering consulting and training services to maximize the value of your investment in flow assurance

SPT Group has one of the world's leading dedicated flow assurance consulting teams working with multiphase flow technology in wells and pipelines.

Every day we work with the world's leading energy corporations and oil and gas service companies to locally deliver specialist consulting and training services through our global offices and training facilities.

To learn more about the value we offer please visit www.sptgroup.com

SPT GROUP
 A Schlumberger Company



Drilling Surveillance and Geosteering in Real-Time!

Petrolink is uniquely vendor neutral allowing you to bring your data into your own environment. We provide true real-time interoperability between rig site contractors and your drilling and geoscience office teams to Make Better Decisions, Faster!

www.petrolink.com
sales@petrolink.com



New Version

MUDPRO
 Drilling Mud Reporting Software



Pegasus Vertex, Inc.
 713-981-5558 | sales@pvisoftware.com | www.pvisoftware.com

advanced FRAC SCHOOL
 October 21-25, 2013
 Houston, TX

For More Information Visit:
www.fracschool.com
 or call 832.833.2569

November 11-15, 2013
 Houston, TX

FRAC SCHOOL

Characterizing Shale Plays — The Importance of Recognizing What You Don't Know

Shale plays typically exhibit much more uncertainty in individual well performance than conventional reservoirs. Understanding this uncertainty is particularly critical during the exploration drilling program when one has relatively few wells on which to base decisions. A systematic approach to understanding and managing this uncertainty can be used to address key questions during the early phases of a drilling program, including “how many wells do I need to drill before I have confidence in the results?” and “does the well performance I’ve seen to date provide the encouragement needed to keep drilling?” To answer these questions, one must quantify the uncertainty surrounding individual well results. Key elements of this evaluation process include: 1) identifying analogs that can provide insights into the level of well performance uncertainty to expect; 2) stochastically modeling the potential range of well results from the testing program; 3) deciding what level of risk is acceptable to the decision-makers; and 4) planning and executing a testing program that incorporates these elements.

The primary take-away from this presentation is that it is critical to recognize, and properly characterize, uncertainty in shale well production performance when planning an exploration drilling program in shale plays. Without such an approach, the commercial potential of a play may not be adequately characterized, leaving the decision-makers without the information needed to determine the path forward. Understanding the uncertainty in well performance, and planning for it, will lead to more efficient exploration activity, and better informed decision-making.

Brad Berg

Brad Berg serves as Reservoir Engineering Manager for U.S. Onshore Exploration with Anadarko Petroleum Corporation, one of the world’s largest independent E&P Companies. His responsibilities include advising senior management on the commercial viability of opportunities in the company’s diverse exploration portfolio. In his current role, he has been instrumental in developing the methodology and tools that Anadarko uses to evaluate unconventional resource plays. His team has assisted in the evaluation, capture, and appraisal of Anadarko’s positions in the Marcellus, Maverick EagleFord, Avalon, and Ohio Utica shale plays, and they continue to support exploration efforts in other promising areas of the U.S. onshore. Brad has also served as the Reservoir Engineering Manager for Anadarko’s Gulf of Mexico deepwater exploration team, asset manager for the mid-continent U.S. region, and has also contributed to the development of several world-class conventional reservoirs including the Prudhoe Bay, Kuparuk, and Alpine fields in Alaska.



Event Info

SPEAKER

*Brad Berg
Reservoir Engineering Manager
for U.S. Onshore Exploration,
Anadarko Petroleum Corporation*

LOCATION

*The Courtyard on St. James Place
1885 Saint James Place
Houston, TX 77056*

EVENT CONTACT

*Miles Palke
713-750-5490
miles_palke@ryderscott.com*

MEMBERS

\$35 Pre-Registered / \$45 Walk-in

NON-MEMBERS

\$40 Pre-Registered / \$45 Walk-in

Directionally challenged?

If your directional drilling program is more challenging than you expected, maybe you need a new directional driller. Maybe you need Ryan Directional Services, Inc.

Ryan has experience in virtually every important oil and gas shale play. We know the potential roadblocks and how to address them before they cost you money. And that takes drilling to a new level of efficiency.

Call Ryan at 281.443.1414 and see how our directional drilling program will change your experience from challenging to rewarding.

www.nabors.com



Why can Weatherford deliver more real time data at the wellsite than any other mudlogging company?

Tim has cabin fever.



**EXCELLENCE
FROM THE
GROUND UP™**

Our Global Operations Manager for Surface Logging Systems, Tim, is all smiles these days. That's because he and his team recently designed a new state-of-the-art mudlogging cabin. The spacious interior makes room for more laboratory services at the wellsite. Now exploration companies have access to more data in real time, so they can make better decisions faster. It's one more way Weatherford Mudlogging is committed to Excellence from the Ground Up.

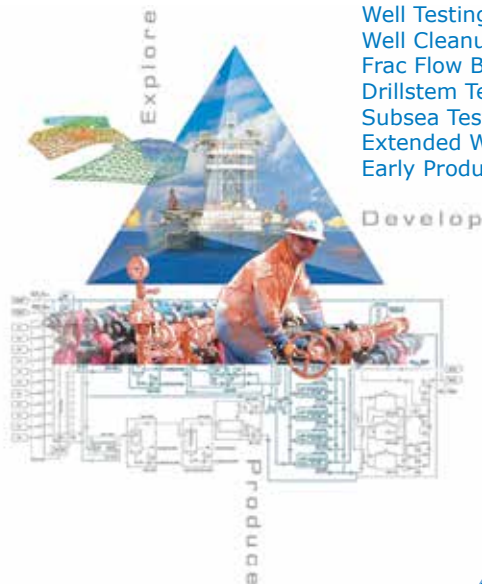
SURFACE LOGGING SYSTEMS
www.weatherford.com/surfacelogging
mudlogging.services@weatherford.com



Delivering Testing Results in Every Phase

Production Testing Services

- Well Testing
- Well Cleanup
- Frac Flow Back
- Drillstem Testing
- Subsea Test Trees
- Extended Well Tests
- Early Production Facilities



tetratec.com

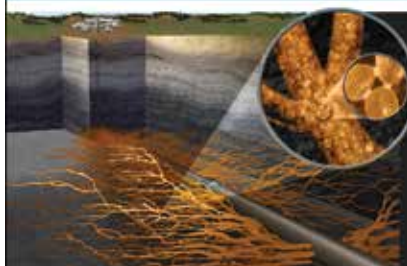
© TETRA and the TETRA logo are registered trademarks of TETRA Technologies, Inc. All rights reserved.

**DIRECTIONAL
AND
HORIZONTAL
DRILLING
SPECIALISTS**



WWW.NOVADIRECTIONAL.COM

Innovative Proppant Technology



**OilPlus™
PROPPANTS**

New OilPlus™ Proppants
Provide Enhanced Oil
Recovery for Your Well.

E-mail us at oilfield@momentive.com.



Is There More Value in Number of Fracs or Greater Effective Frac Length?

Is there more value in the number of fracs or in the propped fracture half-length? This question has been asked with regard to various formations and fields for the past few decades. This presentation will discuss some modeling results used to direct field trials and analyze the data collected. The field trials and associated data collection were conducted in the Eagle Ford shale.

Shawn Holzhauser

Shawn Holzhauser graduated from LSU with a BS degree in chemical engineering in 2004. He has worked in several different roles at Shell, including subsea completions both domestically and internationally, production surveillance of conventional tight gas assets in south Texas, and development optimization of both the Haynesville and Eagle Ford shales. He is currently the completion engineering team lead for the Eagle Ford and Haynesville shale assets at Shell in Houston.

Event Info

SPEAKER

Shawn Holzhauser
Completion Engineering Team Lead
Shell

LOCATION

Norris Westchase Center
9990 Richmond Ave., Suite 102
Houston, Texas 77042

EVENT CONTACT

Andrea Hersey
281-646-2805
andrea.hersey@momentive.com

MEMBERS

\$40

NON-MEMBERS

\$45



Technical Documentation Development and Management Consulting



Technical Writing

- + Develop content
- + Multiple authors – consistent voice
- + Formatting, grammar & readability
- + Develop / edit graphics

Management Consulting

- + Documentation & project management
- + Procedures, processes & workflow
- + RFPs, RFCs & contract management

Documentation help = more available engineering time

- Quick turnaround
- On-demand resource
- Turnkey publication

ZAETRIC®
www.zaetric.com

COMMITTEE COMMUNITY SERVICE

FRI
November 1

9:00 AM TO 3:00 PM

HCC STEM FAIR

SPE-GCS will have an exhibit booth at HCC STEM Fair, which will welcome more than 600 high school students from Houston area schools. This STEM Fair will provide both insight and motivation as they consider STEM career areas. SPE is looking for volunteers to help out at the SPE sponsored table handing out information and goodies, as well as answering any questions from students.

EVENT LOCATION

HCC Northeast College
555 Community College Dr.
Houston, TX 77013

CONTACT

Amy Timmons
713-832-6563
Amy.Timmons@Weatherford.com

TUE
November 12

ALL DAY

2013 CAREER DAY EXPO

Hosted by the City of Houston HR Dept., the 2013 Career Day Expo will allow more than 1500 high school students to discover a wide variety of career opportunities available in Houston's major growth industries in public and private sectors. SPE-GCS will have an exhibit table and needs representatives in the O&G industry to volunteer to support this initiative.

EVENT LOCATION

George R Brown Convention Center
1001 Avenida De Las Americas
Houston, TX 77010

CONTACT

Amy Timmons
713-832-6563
Amy.Timmons@Weatherford.com

COMMITTEE CONTINUING EDUCATION

OIL PATCH ORIENTATION

This seminar is one of the most popular SPE programs. The course is designed as a non-technical audio-visual guided tour through the oil patch, illustrating the basic equipment and techniques used in the discovery, development and production of petroleum.

The event will begin with an introduction and an outline of the day. The following topics will be discussed: the economics & future of the petroleum industry, theory of the origins of hydrocarbons, reservoir parameters, geology of petroleum & geophysics, drilling basics, well logging, well completions, reservoir drive mechanisms, production equipment and midstream & downstream topics.

SPEAKERS

John Farina Ken Arnold
Ron Hinn Marty Stetzer
Susan Howes

TUE
November 19

8:30 AM TO 5:30 PM

LOCATION

Hilton Houston North
12400 Greenspoint Dr
Houston, TX 77060

CONTACT

Regina Eco
713-308-0329
petrolera@gmail.com

PRICE

\$350 (ends 11/15/2013)



WED
November 20

6:00 PM TO 8:00 PM

SWE & SPE DEVELOPMENT EVENT: TECHNICAL WRITING FOR ENGINEERS WITH EVALYN SHEA

We are happy to partner with the Society of Women Engineers and BP to host our November professional event with Ms. Evalyn Shea. Ms. Shea is the founder and president of Shea Writing and Training Solutions, and will be giving a seminar on improving technical writing skills. She helps “make clarity out of chaos” for many of her oil and gas clients.

Evalyn M. Shea

Evalyn established Shea Writing and Training Solutions in 1997 and has built a solid family of clients, primarily through referrals. Growing from one to a staff of over 30 writers, editors, and designers, Shea Writing and Training Solutions is now a \$2.5 million company, meeting the needs of clients domestically and internationally. Shea Writing and Training Solutions is certified as a woman-owned business by the Women’s Business Enterprise Alliance, and as one of the premier small businesses of the area, Shea was included on the Houston Business Journal’s list of Houston Fast 100 Growing Companies in the years 2000, 2007, 2008, 2010, and 2011. Evalyn’s strong belief in community is evident in her highly active participation and leadership roles across various boards and associations, including Marine Technology Society – Vice-Chairman 2006 – 2008, Chairman 2008 – 2009; Society of Professional Women in Petroleum – Past President; Women’s Business Enterprise Alliance – Committee Work; ASME – International Offshore Pipeline Forum Steering Committee; Association of Proposal Management Professionals – Past President; Society for Technical Communication – Occasional Panelist and Speaker.

Evalyn resides with her husband in Southwest Houston and is very proud of her two brilliant daughters. She enjoys reading, sewing, and walks in nature, and she looks forward to learning how to play golf.



SPEAKER

*Evalyn M. Shea
President
Shea Writing and Training
Solutions, Inc.*

LOCATION

*BP Complex Energy Corridor
BP Complex
Westlake 3, Room 3.179
550 Westlake Park Blvd
Houston, TX 77079*

CONTACT

*Anne Branson
AnneBranson@Chevron.com*

COMMITTEE AUXILIARY

NOVEMBER 2013 ACTIVITIES

EVENT

November 8, 2013

LOCATION

*Champions Golf Club
13722 Champions Drive
Houston, TX 77069*

COST

\$35 (Checks Only, Please)

PROGRAM

*Holiday Fashion Trends, A
Casual Style Show by Scruples*

CONTACT

*Nancy Hill
nancyhill2444@sbcglobal.net*

*Evelyn Earlougher
earlougher@comcast.net*

BOOK CLUB

November 20, 2013

LOCATION

Carol Ann Gold

BOOK

Please call for information

CONTACT

*Martha Lou Broussard
713-665-4428*

*Karen Mermis
281-290-8924*

COMMITTEE EDUCATION

2014-2015 SPE-GCS Scholarships

Renewable yearly scholarship (\$1,500/semester, \$3,000/academic year) up to 4 years:

- Eligibility for renewal is dependent upon maintaining a GPA of at least 3.0, majoring in engineering/geoscience, and pursuing a career in the Oil & Gas industry

The requirements for first time applicants:

- Currently reside in Houston OR 29-county Gulf Coast area
- Enroll in an engineering or science program at a university in the Fall
- Be a current high school senior
- Minimum SAT score of 1650
- Be a U. S. citizen
- Completely fill out the scholarship form and turn in by deadline: 2/12/2014
- High school academic record
- Activities, awards and honors
- SAT and/or ACT score
- Professional reference letters
- Financial need (if applicable, not required)
- Short essay (approx. 500 words)

The process:

- Scholarship committee reviews each application
- Selected applicants are interviewed in the second round (April 2014)
- After the interviews, the scholarship committee meets and collectively decides the 2014-15 scholarship recipients (May 2014)

NOTE: Each 2014-15 first-time scholarship recipient may be eligible for a summer internship with an oil & gas company on availability

More Info

TO APPLY

Log on to the SPE Gulf Coast Section homepage and select the Scholarship/Internship committee page. A link to instructions and the online application are located in the center.

QUESTIONS

gcs-scholarship@spemail.org

INSTRUCTONS

<http://spegcs.org/scholarship-app/instructions/>

APPLICATON

<http://spegcs.org/forms/2014-2015-Scholarship-Application/>



November **FRI**
14
NOON

Inaugural Society of Petroleum Engineers UH Student Chapter Golf Tournament

Scramble Tournament Hosted by Black Horse Golf Club

Trophies for top teams, hole prizes and a raffle. All proceeds to benefit SPE UH Student Chapter.

SPONSORSHIP LEVELS

Platinum Sponsor \$5,000

Two (4 person) team entries

Gold Sponsor \$3,000

Two (4 person) team entries

Silver Sponsor \$2,000

Single (4 person) team entry

Bronze Level Sponsor \$1,000

Single (4 person) team entry

Event Hole Sponsor \$500

Signage at a hole specific to an on-course event

Hole Sponsor \$250

Signage at any non-on-course event hole

Event Info

LOCATION

*Black Horse Golf Club
12205 Fry Road
Cypress, TX 77433*

REGISTRATION FEE

*\$250 – Single Entry
\$850 – 4 Person Entry*

REGISTRATION

*Brandon Englert
bmenglert@uh.edu
713-702-0427*

EVENT COORDINATOR

*Kendall Farrell
kfarrell@uh.edu
972-979-7163*



EVENT RECAP

We want to thank the Business Development Study Group, Reservoir Study Group, Northside Study Group and the Young Professionals for all submitting photos this month of their events. We'd like to feature more photos from our section events and luncheons in the Connect. If you would like your group to be recognized in the Connect with your wonderful photos, please send your photos by the 25th of every month to the Connect editor at editor@spegcs.org





WANT TO REACH OVER 15,000 SPE MEMBERS IN THE GREATER HOUSTON AREA?

Advertise your business in the SPE-GCS Newsletter

Connect is printed 12 times per year and contains premium positions for advertisers wanting to reach some of the most influential oil & gas professionals in the world. We are still selling ads for the 2013-2014 program year, and our ad sizes have been updated. Please visit the SPEGCS website for more information regarding ad pricing and specifications.

IF YOU'D LIKE TO PLACE AN AD IN THE SPE-GCS NEWSLETTER OR WEBSITE PLEASE CONTACT:

Pat Stone, Star-Lite Printing, Inc
281-530-9711
starlite1@sbcglobal.net

SMART EARLY KICK DETECTION-
when every second counts...



New innovative solutions for detecting fluid anomalies and reducing well control risk using FADS™

- ✓ Faster – earlier detection than conventional systems
- ✓ Reliable – minimal maintenance, remote operation
- ✓ Easy to Install – minimal modifications to existing rigs
- ✓ Field Proven – in use now. On/offshore applications

mezurx.com

PASS THE PROFESSIONAL FUNDAMENTAL EXAM (FE)

Do you need to take the FE Exam before you can qualify to take the Petroleum PE Exam next fall – Even several years after graduation?

Contact Winrock Engineering for the technique to study and pass the FE Exam with a 98+% certainty

Next FE Exam Date: April 12, 2014
FE Exam Application Deadline Date: February 20, 2014

P: 405-822-6761 | E: bingwines@cox.net
winrockengineeringinc.com

PHDWIN™

Integrated Economics & Decline Curve Analysis

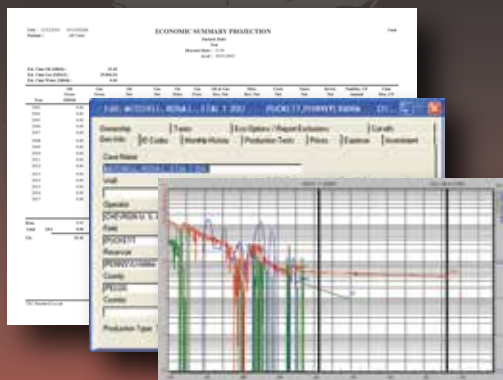
NOW EVEN MORE POWERFUL WITH

PHDRMS™

Reserves Management System

The *complete solution* for evaluating, managing, and reporting reserves and performance data.

Schedule an **online** presentation
TODAY!



TRC Consultants, LC 888-248-8062 www.phdwin.com

COMING UP IN DECEMBER

TUE
December 3

11:30 AM TO 12:30 PM

CAREER MANAGEMENT: ETHICS SEMINAR

Texas Board of Professional Engineers – Licensing Process/Ethics:
Covers the licensing requirements and applications process as well as rule and legislative changes that affect the profession, and board issues/actions

The Society of Petroleum Engineers Gulf Coast Section will present a continuing education seminar which will discuss ethics. This 1-hour seminar will qualify attendees for their annual ethics training requirement by the Texas Board of Professional Engineers.

George Hartmann

George P. Hartmann, P.E. is a Licensing Project Manager at the Texas Board of Professional Engineers in Austin. He has been with the Board for nine years. Previously he worked with the Texas Commission on Environmental Quality and predecessor agencies; Huntsman Corporation; and two environmental engineering consulting firms. He is a 1981 graduate of Manhattan College with a Bachelor's degree in chemical engineering.

SPEAKER

*George P. Hartmann, P.E.
Licensing Project Manager
Texas Board of Professional
Engineers in Austin*

LOCATION

*SPE GCS Office
10777 Westheimer, Suite 1075
Houston, TX 77042*

CONTACT

*Patty Davis
patty.davis@petroskills.com*

MEMBERS

\$40

NON-MEMBERS

\$40



Dyna-Drill
Manufacturers of
Drilling Motor Components

- Mud Motor Power Sections (Sizes: 2 7/8" to 11 1/2")
- Matrix-3® Coated Bearings
- Coil Tubing Power Sections (Sizes: 1 11/16" to 3 3/4")
- Precision Machining

www.dyna-drill.com **Power That Lasts™**



PPI Mechanical Testing
Just northwest
of Houston

ISO & API Testing - Connection Qualification
BSEE Testing

ppitech.net/testing (936)931-0179

SPE GULF COAST SECTION DIRECTORY

Your guide to your organization leaders

Officers

CHAIR

Mike Strathman, The Trinity Group, Inc.
713-614-6227
mike-strathman@att.net

VICE-CHAIR

Jeanne Perdue, Occidental Oil and Gas
713-215-7348
jeanne_perdue@oxy.com

SECRETARY

David Flores, Consultant
281-381-5828
david_p_flores@yahoo.com

TREASURER

Robert Bruant, Jr., BP America, Inc.
281-366-2157
Robert.Bruant@bp.com

VICE TREASURER

Lucy King, Miller and Lents, Ltd.
713-308-0343
lking@millerandlents.com

CAREER MANAGEMENT

Patty Davis, PetroSkills
832-426-1203
Patty.Davis@petroskills.com

COMMUNICATIONS

Valerie Martone, Anadarko
832-636-3196
Valerie.Martone@anadarko.com

COMMUNITY SERVICES

Amy Timmons, Weatherford
713-836-6563
amy.timmons@weatherford.com

EDUCATION

Gabrielle Guerre, Ryder Scott
713-750-5491
gabrielle_guerre@ryderscott.com

MEMBERSHIP

Xuan (Sun) VandeBerg Harris, Consultant
832-444-5143
xuan.harris@gmail.com

PAST CHAIR

Steve Baumgartner, Marathon Oil Corp.
713-296-3190
sbaumgartner@marathonoil.com

PROGRAMS

David Tumino, Murphy Oil Corp.
281-717-5123
tuminospe@hal-pc.org

SOCIAL ACTIVITIES

Jim Sheridan, Baker Hughes
281-432-9202
jim.sheridan@bakerhughes.com

TECHNOLOGY TRANSFER

Carol Piovesan, APO Offshore
281-282-9291
cpiovesan@apooffshore.com

YOUNG PROFESSIONALS

Simeon Eburi, Chevron
simeon.eburi@chevron.com
806-544-0829

DIRECTOR 2012-14

Alex McCoy, Occidental Oil and Gas
713-366-5653
alexander_mccoy@oxy.com

Kevin Renfro, Anadarko

832-636-8613
kevin.renfro@anadarko.com

Wolfgang Deeg, Shell

281-544-8279
wjfdeeg@spemail.org

DIRECTOR 2013-15

Trey Shaffer, ERM
281-600-1016
Trey.Shaffer@erm.com

John Lee, UH

713-743-4877
wjlee3@uh.edu

Deepak Gala, Shell

281-544-2181
deepak.gala@shell.com

SPE GULF COAST NORTH AMERICA REGIONAL DIRECTOR

Bryant Muller, Halliburton
281-818-5522
Bryant.Mueller@halliburton.com

Committee Chairs

AWARDS

James Rodgerson, BP
281-221-4085
james.rodgerson@bp.com

CONTINUING EDUCATION

Nii Ahele Nunoo, NOV
507-304 5416
Nii.Nunoo@nov.com

ESP WORKSHOP

Noel Putscher, Newfield
281-674-2871
nputscher@newfield.com

GOLF

Cameron Conway, Cactus Pipe
281-217-0660
cconway@cactuspipe.com

INTERNSHIPS

Gabrielle Guerre, Ryder Scott
713-750-5491
gabrielle_guerre@ryderscott.com

NEWSLETTER

John Jackson, CCR Technologies
713-998-3121
editor@spgcs.org

SCHOLARSHIP

Tanhee Galindo, BASF
713-428-4919
tanhee.galindo@basf.com

SPORTING CLAYS

Paul Conover, NOV
713-346-7482
paul.conover@natoil.com

TENNIS

Gurjeet Jauhar, Baker Hughes
832-559-4415
gurjeet.jauhar@bakerhughes.com

WEB TECHNOLOGY

Shivkumar Patil, Aker Solutions
713-369-5352
Shivkumar.Patil@akersolutions.com

SECTION MANAGER

Kathy MacLennan, SPE-GCS
713-779-9595 x 813
kmacclennan@spe.org

Study Group Chairs

BUSINESS DEVELOPMENT

Steve Mullican, Grenadier Energy Partners
281-907-4120
smullican@grenadierenergy.com

COMPLETIONS & PRODUCTION

Mark Chapman, CARBO Ceramics
281-921-6522
mark.chapman@carboceramics.com

DIGITAL ENERGY

Rick Morneau
281-315-9395
Rick@MorneauConsulting.com

DRILLING

Joe Tison, Greene Tweed
281-784-7805
wtison@gtweed.com

GENERAL MEETING

Raja Chakraborty, Shell
281-544-2148
Raja.Chakraborty@shell.com

HEALTH, SAFETY, SECURITY, ENVIRONMENT AND SOCIAL RESPONSIBILITY

Trey Shaffer, ERM
281-600-1016
trey.shaffer@erm.com

INTERNATIONAL

Owen Jones, ExxonMobil
Development Company
832-624-2019
owen.jones@exxonmobil.com

NORTHSIDE

Naval Goel
650-307-7267
navalgoel@hotmail.com

PERMIAN BASIN

Amy Timmons, Weatherford
713-836-6563
amy.timmons@weatherford.com

PETRO-TECH

Marci Nickerson, Consultant
713-446-3400
mnick52@sbcglobal.net

PROJECTS, FACILITIES, CONSTR.

Bill Kinney, Wood Group Kenny
281-646-4198
william.kinney@woodgroupkenny.com

RESEARCH & DEVELOPMENT

Skip Davis, Technology Intermediaries
281-359-8556
skdavis@technologyintermediaries.com

RESERVOIR

Sunil Lakshminarayanan, Weatherford
713-849-1861
sunil.lakshminarayanan@weatherford.com

WATER & WASTE MANAGEMENT

Kayli Clements, Schlumberger
281-561-1446
kclements@slb.com

WESTSIDE

Andrea Hersey, Momentive
281-646-2805
andrea.hersey@momentive.com

ADVERTISE IN THIS NEWSLETTER OR ON THE SPE-GCS WEBSITE

Connect is printed 12 times per year and contains premium positions for advertisers wanting to reach some of the most influential oil & gas professionals in the world. We are still selling ads for the 2013-2014 program year, and our ad sizes have been updated. Please visit the SPEGCS website for more information regarding ad pricing and specifications.

FOR INFORMATION ON ADVERTISING IN THIS NEWSLETTER OR ON THE SPE-GCS WEBSITE, PLEASE CONTACT:

Pat Stone, Star-Lite Printing, Inc
281-530-9711
starlite1@sbcglobal.net

CONNECT

Information

Newsletter Committee

CHAIRMAN | John Jackson
editor@spegcs.org

AD SALES | Pat Stone
starlite1@sbcglobal.net

BOARD LIAISON | Valerie Martone

NEWSLETTER DESIGN | DesignGood
designgood.com
designgoodstudio.com

SPE Houston Office

GULF COAST SECTION MANAGER

Kathy MacLennan | kmaclellan@spe.org

GCS ADMINISTRATIVE ASSISTANT

Sharon Harris | sharris@spe.org

HOURS & LOCATION

10777 Westheimer Road, Suite 1075
Houston, Texas 77042
P 713-779-9595
F 713-779-4216
Monday - Friday 8:30 a.m. to 5:00 p.m.

Photo Submissions

We are looking for member photos to feature on the cover of upcoming issues! Photos must be at least 9" by 12" at 300 DPI. Email your high resolution picture submissions to:
editor@spegcs.org

Change of Address

To report a change of address contact:
Society of Petroleum Engineers
Member Services Dept.
P.O. Box 833836
Richardson, Texas 75083-3836
1.800.456.6863
service@spe.org

Contact

For comments, contributions, or delivery problems, contact editor@spegcs.org.

ARE YOU FEELING THE EFFECTS OF THE **Great Crew Change?**

*Replenish
your company men
with competent
personnel...*



NON-PROFIT
ORGANIZATION
U.S. POSTAGE
PAID
PERMIT NO. 6476
HOUSTON, TX

SOCIETY OF PETROLEUM ENGINEERS
GULF COAST SECTION

10777 Westheimer Road
Suite 1075
Houston, TX 77042

Signa's Wellsite Foreman Intern Training (WFIT) program does all the groundwork to provide operators with qualified company men. We screen, select and train optimal candidates, evaluating each of them throughout to ensure they're tailor-made for your company.

- Drilling or Completion
- Establish core skillsets
- Instill good habits
- Get quicker results
- Monitor progress



The WFIT program is a comprehensive 8-mo. training class utilized by large and small operators (As featured in *Offshore magazine*).

Signa Engineering Corp.
Houston, TX USA
www.signaengineering.com

Contact: Dave Roseland
281.774.1026
droseland@signa.net

CALENDAR

November 2013

Sunday	Monday	Tuesday	Wednesday	Thursday	Friday	Saturday
					Community Service	
						1 2
3	4	5	6	7	8	9
		Community Service Northside	Drilling	Research & Development Board Of Directors	Auxiliary	
10	11	Petro-Tech	12	13	14	15
		Permian Basin Oil Patch Orientation	Young Professionals Business Development Completions & Production	Young Professionals	Student Golf Tournament	
17	18	19	20	21	22	23
		Westside Auxiliary				
24	25	26	27	28	29	30