



Gulf Coast Section

OCTOBER
2013

CONNECT

SPE GULF COAST SECTION NEWSLETTER

The Emergence of Saudi America - A Five-Year Global Energy Outlook

GENERAL MEETING P. 9

How Pad Drilling is Driving Drilling Efficiency Up and Demand For Oilfield Services Down

DRILLING P.14

DEVELOPMENT OF THE BRITTLE SHALE FRACTURE NETWORK MODEL

COMPLETIONS & PRODUCTION P.11

COMPARING THE ECONOMICS OF UNCONVENTIONAL AND DEEPWATER MEGA-PROJECTS

NORTHSIDE P.17

What can nanotechnology do for the oil and gas industry?

RESEARCH & DEVELOPMENT P. 23

SPEGCS.ORG



CHAIRMAN'S CORNER

MIKE STRATHMAN
2013-2014 SPE-GCS Chair

Fall is here, Christmas is just around the corner, and SPE-GCS has a full schedule of events. In October, SPE-GCS has planned seven industry knowledge sharing events; two community service events where you can have some fun time with family; and a networking social event after work. Please visit the SPE-GCS website and sign up for events which interest you.

Looking forward, please plan your November schedule. Among our events, the Reservoir Study Group is pleased to have an SPE Distinguished Lecturer, Brad Berg from Anadarko, scheduled for November 14th 2013. His talk, Characterizing Shale Plays — The Importance of Recognizing What You Don't Know, is timely on a technology level and provides an opportunity to directly question a world-class expert. Take advantage of the Distinguish Lecturer Program; they are always especially enlightening. Sunil Lakshminarayanan is the new Chair of the Reservoir group (This group is one of the many technical sharing groups in SPE-GCS) and he looks forward to seeing you there. You can visit the SPEGCS.org site to sign up for the lecture.

SPECIAL FOCUS – CAREER DEVELOPMENT

In 2012, SPE completed a Training & Development Study which identified a range of skills that are important for a successful career in the Oil and Gas Industry. The most sought after being the ability to learn, teamwork, communication skills, work ethic, and technical skills. Our Career Management Committee will be using results of this study, and gathering insight from members to develop new ideas for our 2014 program. In October, watch out for a Career Management networking opportunity event on the website. This will give you the chance to meet our new committee, network with other professionals, and share ideas (or suggestions) for the coming year's program.

Career Management has confirmed two Ethics Seminars; one was this past month and the next one is planned for December 3rd – please make sure you register early to attend as these fill up quickly. If you have a specific career management topic you would like SPE-GCS to host, or want to become a part of this exciting Committee, please get in contact with Patty Davis, Chair pdavis@petroskills.com

JUST THOUGHT YOU SHOULD KNOW....

PetroWiki is a free, publicly available resource from the Society of Petroleum Engineers (SPE) with technical information and equations related to the upstream Oil and Gas Industry. It is based on SPE's 7-volume Petroleum Engineering Handbook (PEH). The PEH volume, covering drilling and completions, was included in PetroWiki as a pilot project in October 2012. The remaining volumes of PEH will be available in 3rd Quarter 2013.

As a professional in the industry, you can share your expertise and experience by contributing content to *PetroWiki*. Check out the process and share what you have learned.

PetroWiki www.petrowiki.org

We want to provide members and the community with useful information and benefits. We welcome your comments and ideas. Please contact me at mike-strathman@att.net

THU
October
10
7:30 AM TO 10:30 AM

BOARD OF DIRECTORS MEETING

LOCATION

SPE Houston Office
10777 Westheimer Rd.
Suite 1075
Houston, TX 77042

EVENT CONTACT

Sharon Harris
713-457-6821 EXT. 821
713-779-4216 FAX
sharris@spe.org

FEATURES

October 2013

STUDY GROUPS

RESEARCH & DEVELOPMENT
10/3/13

What can nanotechnology do for the oil and gas industry?

P. 23

NORTHSIDE
10/8/13

Comparing the Economics of Unconventional and Deepwater Mega-Projects

P. 17

DRILLING
10/9/13

How pad drilling is driving drilling efficiency up and demand for oilfield services down

P. 14

GENERAL MEETING
10/10/13

The Emergence of Saudi America - A Five-Year Global Energy Outlook

P. 9

DIGITAL ENERGY
10/16/13

Digital Oilfield, Challenges and Risks

P. 13

WESTSIDE
10/16/13

Completion Design Methodology for Early Exploitation/Exploration Shale Wells

P. 27

INTERNATIONAL
10/17/13

Global Deep Water Drilling in Potentially High Pressure Zones

P. 15

PERMIAN BASIN
10/15/13

Produced Water Management - Waste to Value

P. 19

COMPLETIONS & PRODUCTION
10/23/13

Development of the Brittle Shale Fracture Network Model

P. 11

PROJECTS FACILITIES
& CONSTRUCTION
10/23/13

Adjusting the Basis of Design Why Facilities Engineers Need to Think

P. 21

RESERVOIR
10/24/13

Bayesian Logic for Fun and Profit

P. 25

BUSINESS DEVELOPMENT
10/30/13

Expanding Gas Demand – When Will the Cavalry Arrive?

P. 10

COMMITTEES

COMMUNITY SERVICE
10/11/13

SkillsUSA District VIII Fall Leadership Conference

YOUNG PROFESSIONALS
10/10/13

Professional Networking with SWE

ENERGY DAY 2013
10/19/13

EDUCATION
2014-2015 SPE-GCS Scholarship

P. 28

CONTINUING EDUCATION
Oil Patch Orientation

P. 29



UH STUDENT CHAPTER GOLF
TOURNAMENT
Friday, November 15th

IN EVERY ISSUE

SPE-GCS MEMBERSHIP REPORT
June 2013

P. 5

THEN & NOW
Buddy Woodroof

P. 6

SPE GULF COAST SECTION
DIRECTORY

P. 36

WE MAKE IT WORK RIGHT THE FIRST TIME

Deeper and deeper water. Larger projects. More complex design challenges. More people with highly specialized skills. Fewer people who see the big picture.

GATE's full-service team takes a larger, systems view of the interactions and intricacies of the project as a whole. This enables us to develop solutions that cross many different disciplines and boundaries.

We make it work right the first time.

www.gateinc.com

GATE
GIBSON APPLIED TECHNOLOGY & ENGINEERING, INC.

You drop it in the wellbore, we catch it!

Introducing ...

OPEN HOLE NET™

Protects the wellbore from metal dropped into and coming out of the wellbore!

- Installs over any API standard size annular preventer.
- Roughnecks rig it up; no operator needed.
- No power source needed.
- Operates 24/7/365. Never rests.
- Complete stainless steel construction.
- M.A.D.E.™ (Made, Assembled, Designed, Engineered) in USA.

Patent Pending

Visit Us at SPE/ATCE 2013 Sept. 30-Oct. 2 Booth #3258

5D Oilfield Magnetics™

Premier Magnetic Applications in Drilling Completion and Production Operations
sales@5doilfieldmagnetics.com • 337.466.7400

www.5doilfieldmagnetics.com

MULTI-STAGE FRACTURING

Not all ball-drop systems are created equal.

Our QA/QC process provides 100% traceability with 2D barcodes ensuring that every system is tracked from raw steel to on-site delivery. Contact us today and let us help you maximize your assets.

DO IT ONCE. DO IT RIGHT.

Packers Plus®
www.packersplus.com

Slider

Automated Directional Drilling

IMPROVE YOUR HORIZONTALS

- ON-BOTTOM TOOL FACE ORIENTATION
- INCREASED MOTOR LIFE
- INCREASED ROP & HORIZONTAL REACH CAPABILITY
- ELIMINATES ORIENTATION TIME LOSSES

slb.com/Slider

Integrated Energy Services ,Inc.

Robert Barba
Petrophysicist

Log Analysis
Completion Optimization

500 N. Capital of TX Hwy
Building 4-150
Austin, TX 78746
C: (713) 823-8602
F: (713) 583-9400
RBarba75@gmail.com

www.integrated-energy-services.com

SPE-GCS MEMBERSHIP REPORT

August 2013

AUGUST 2013

Total: **15,245**

YP: **3,321**

JULY 2013

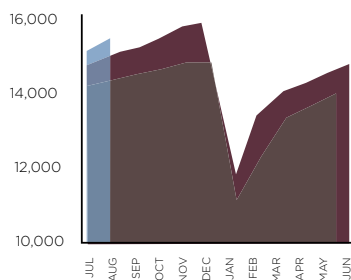
Total: **15,052**

YP: **3,220**

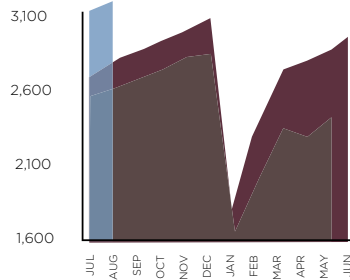
| | AUGUST | | JULY | |
|------------------------|--------|--------|--------|--------|
| | Total | YP | Total | YP |
| SPE-GCS Members | | | | |
| New Members | 142 | 83 | 134 | 79 |
| Reinstated | 2 | 1 | 0 | 0 |
| Transferred to Section | 10 | 7 | 3 | 2 |
| Unpaid | 2,371 | 794 | 2,438 | 815 |
| Student Members | | | | |
| | Paid | Unpaid | Paid | Unpaid |
| Texas A&M | 646 | 200 | 609 | 227 |
| UH/Rice | 405 | 82 | 394 | 89 |
| HCC | 85 | 13 | 83 | 13 |
| Total | 1,136 | 295 | 1,086 | 329 |
| Total Paid/Unpaid | 16,381 | 2,666 | 16,138 | 2,767 |
| % Paid | 86.0% | | 85.4% | |

2011-2012
 2012-2013
 2013-2014

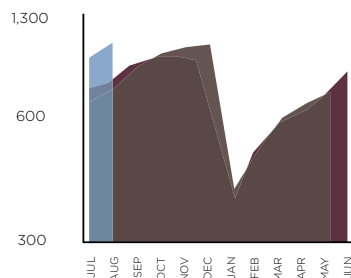
PROFESSIONALS



YOUNG PROFESSIONALS



STUDENTS



Please renew
your SPE
membership
today at
spe.org/join

EVENTS STUDENT GOLF TOURNAMENT

Inaugural Society of Petroleum Engineers UH Student Chapter Golf Tournament

Scramble Tournament Hosted by Black Horse Golf Club

Trophies for top teams, hole prizes and a raffle. All proceeds to benefit SPE UH Student Chapter.

SPONSORSHIP LEVELS

Platinum Sponsor \$5,000

Two (4 person) team entries

Gold Sponsor \$3,000

Two (4 person) team entries

Silver Sponsor \$2,000

Single (4 person) team entry

Bronze Level Sponsor \$1,000

Single (4 person) team entry

Event Hole Sponsor \$500

Signage at a hole specific to an on-course event

Hole Sponsor \$250

Signage at any non-on-course event hole

TIME & DATE

*Friday, November 15th
at Noon*

EVENT COORDINATOR

*Kendall Farrell
kfarrell@uh.edu
972-979-7163*

LOCATION

*Black Horse Golf Club
12205 Fry Road
Cypress, TX 77433*

REGISTRATION FEE

*\$250 – Single Entry
\$850 – 4 Person Entry*

REGISTRATION

*Brandon Englert
bmenglert@uh.edu
713-702-0427*



THEN & NOW

Column by
BUDDY WOODROOF

October 1963

Stockholders of Texas Pacific Coal and Oil will vote this month on an agreement to sell all of its assets to Joseph E. Seagram & Sons (Looks like the distillers are teaming up.).

A total of 104 slant-hole drilling suits are filed against 70 East Texas operators (You know, it's not easy to drill a straight hole.).

The Pan American Petroleum well in Cook Inlet, Alaska that has been blowing gas and condensate is close to being brought under control, after a mere 13 months of uncontrolled flow.

West Texas operator Jake L. Hamon prepares to drill a 21,000 ft wildcat in Reeves County targeting the Ellenburger formation (How many of you "boomers" worked the Ellenburger play back in the day?).

Meanwhile, the prolific Wolfcamp play remains hot in the Delaware basin (If only they could have drilled them horizontally?).

U.S. active rig count – 1,526

October 1988

U.S. oil companies could reportedly be banned from exploration in the U.K. North Sea if the U.S. follows through on proposed sanctions against South Africa (Figure that one out!).

Crude oil prices drop to the lowest level since late 1986 (less than \$15/bbl). OPEC President Lukman warns that if the lack of discipline within OPEC continues, there could be a rerun of 1986 with prices falling to \$9/bbl.

Meanwhile, due to tight supplies, natural gas prices are forecasted to hit \$2.50/Mcf this winter (A bit of a different picture than in 2013.).

Frontier exploration stirs off, would you believe....North Carolina, offshore Cape Hatteras in particular.

Oman reports plans to build a floating methanol plant off its coast which will be up and running in 1990.

WTI crude oil - \$14.78/bbl; U.S. active rig count – 921

October 2008

Chesapeake Energy's 18,000-acre lease in the Newark East field on Dallas-Fort Worth International Airport land has drilled 82 wells and has five rigs drilling for Barnett shale gas.

Total reports plans to upgrade its 158,000 b/d Provence refinery located on the French Riviera (Word has it that crude oil is stored here in wooden casks rather than in steel tanks prior to being refined.).

Petrohawk Energy reports a horizontal new field discovery well drilled in the Eagle Ford shale in La Salle County in South Texas. Petrohawk has plans to drill a total of three discovery wells in this area and will run one rig continuously to explore the Eagle Ford.

MarkWest begins installation of a 30 MMcfd cryogenic gas processing plant to process Marcellus gas near Houston (Oh!... That's Houston, Pennsylvania).

Global offshore heats up, with new discoveries in the GOM, Angola, Australia, and Brazil.

Light sweet crude oil - \$86.22/bbl; Natural gas - \$6.74/MMbtu; U.S. active rig count – 1,990

THE REST OF THE YARN

This month, we conclude our look back at the life and times of John D. Rockefeller.

To be sure, Rockefeller held onto a great deal of his wealth. His net worth at its peak in 1913 was \$900 million, equivalent to about \$15 billion today. He gave away \$530 million in his lifetime, a staggering amount even today.

As he grew older, John D. Rockefeller loosened up. In the last 30 years of his life he was kind, sweet-tempered, and easygoing. He golfed almost every morning, listened to music, played the stock market, watched car races, handed out dimes and nickels, sat on his sunporch visiting with family and friends, ogled Jean Harlow in the movies, appeared in newsreels, and generally enjoyed life. By the 1920's the public loved him.

His wife Cettie died in 1915 at age 75, but Rockefeller's health remained robust. He moved seasonally between his 3,000-acre main

estate, Pocantico Hills, in Westchester County near New York City, and his house in Ormond Beach, Florida. He doted on his grandchildren, among them Nelson Rockefeller, who would become governor of New York and Vice President of the United States, and David Rockefeller, one of the foremost bankers of his time.

“Many folks believe I’ve done much harm in the world,” Rockefeller said when he was in his mid-90’s, “but on the other hand, I’ve tried to do what good I could, and I would really like to live to be a hundred.” He almost made it. He died peacefully in Florida at the age of 97 on May 23, 1937. He is buried in Cleveland, Ohio.

Next month, a tragic mistake associated with the Rockefellers.

Then & Now October QUIZ

In the early days of refining crude oil, what chemical was used to purify distilled kerosene?

Answers to September’s Quiz

In December 1928, Amerada drilled the first oil well in history in a structure identified with a reflection seismograph.

Congratulations to April’s Winner TYLER DAVIS VALERUS

If you would like to participate in this month’s quiz, e-mail your answer to contest@spe.org by noon, October 15th. The winner, who will be chosen randomly from all correct answers, will receive a \$50 gift card to a nice restaurant.

Mangrove

RESERVOIR-CENTRIC STIMULATION
DESIGN SOFTWARE



Mark of Schlumberger © 2013 Schlumberger 13570036

At last, a stimulation design software that can model the complexities of unconventional plays.

With Mangrove* software, you can integrate all your reservoir data into the Petrel* E&P software platform and get fast, accurate simulations in complex, unconventional reservoirs. Mangrove software links reservoir characterization, stimulation, and production, showing you how to complete and stimulate your well for maximum ROI.

Engineered staging and perforating designs helped PDC Mountaineer increase production more than 50%.

“PDCM will not complete any lateral Marcellus wells without first running this service and evaluating the results.”
—Dewey Gerdom, CEO, PDC Mountaineer.

Find out more at
slb.com/Mangrove

Schlumberger

PATENTED
proNovaTM
 by **TDE**

DRILLING PERFORMANCE

Drilling Tracking Report

CREW PERFORMANCE MEASUREMENTS

AUTOMATIC OPERATIONS DETECTION

INVISIBLE LOST TIME DETECTION

281.755.7595
 www.pronova-tde.com

ProTechnics
 COMPLETION DIAGNOSTICS
 a division of Core Laboratories

Learn more at www.corelab.com/protechnics or call us at 713-328-2320

Measured Solutions from The Completion Diagnostics Company

Fracture Performance?

With ProTechnics' combined spectral and production imaging services you can directly measure:

- Fracture Effectiveness
- Wellbore Connectivity
- Production Allocation
- Water Production Problems
- Stage Production Contribution
- After-Frac Production Baseline

COMPLETION PROFILER

LUFKIN

Expect More

More **SYSTEMS**
 More **SERVICES**
 More **LOCATIONS**

Pump jacks with legendary quality and reliability have been the reputation of Lufkin for more than 100 years. In that same tradition, Lufkin now offers more artificial lift systems, more support services and more locations to serve operators around the world. These highly engineered solutions, supported by our experienced staff, deliver optimum production from your oil and gas wells.

Now, more systems and services to meet your requirements:

- Automation
- Beam Pumping Units
- Hydraulic Pumping Units
- Reciprocating Pumps
- Progressing Cavity Pumps
- Production Optimization
- Well Monitoring
- Secure Scada
- Plunger Lift
- Gas Lift
- Completion Products
- Maintenance & Repair
- Training

The Energy Flows Through Us[®]
 LUFKIN.COM

THU
October 10

11:30 AM TO 1:00 PM

The Emergence of Saudi America - A Five-Year Global Energy Outlook

'Peak Oil' and the \$500 oil price forecast of some "energy pundits" are still fresh memories to us. Only five years later, the media is fixated on "Saudi America" and the vast supply of the dark stuff that some say is going to lead to an oil price collapse. Herewith, we are taking the time to peer into our crystal ball and lay out the supply and demand economics for hydrocarbons from 2013 through 2017.

The current overabundance of natural gas and natural gas liquids has led to a severe cratering of prices on the one hand, but has set in motion a variety of longer-term demand drivers on the other. The emergence of new demand is moving slowly, and although we would like to take the quixotic viewpoint that lower fuel sources will create an industrial renaissance in the US, we are faced with uncertainties surrounding healthcare cost and corporate tax rates that will alter project economics when compared with international options.

On the oil front, fears that the oil boom in the US will create global oversupply causing a collapse in the price of the liquid gold are at the forefront of investors' concerns. We have worked through the supply and demand drivers of natural gas, ethane, propane, butane, C5+ and crude oil over the next half-decade, along with the services required to achieve our forecasts, as will be shown in this presentation.

Michael Kelly

Michael (Mike) Kelly is Vice President and Senior E&P Analyst for Global Hunter Securities LLC. Mr. Kelly covers 26 independent E&P companies, ranging from Permian Basin-focused Clayton Williams Energy Inc. and Concho Resources Inc. to Bakken giant Whiting Petroleum Corp.

Prior to joining Global Hunter Securities in August 2011, Mike was a buy-side energy analyst

for Kennedy Capital in St. Louis. He received his MBA from Washington University's Olin School of Business and his undergraduate degree from Trinity University in San Antonio, where he majored in Business Administration and minored in Political Science. Kelly is a CFA Charterholder.



Event Info

SPEAKER

Michael Kelly
Vice President & Senior
E&P Analyst
Global Hunter Securities LLC

LOCATION

Petroleum Club
800 Bell Street, 43rd floor
Houston, TX 77002

EVENT CONTACT

Barry Faulkner
281-627-8790
barryfaulkner@earthlink.net

MEMBERS

\$35

NON-MEMBERS

\$40

WED
October 30

5:00 PM TO 7:00 PM

Expanding Gas Demand – When Will the Cavalry Arrive?

Join us at the Four Seasons Hotel as Timothy Vail will update us on G2X Energy's expanding gas to liquids portfolio while Cheniere Energy's Renato Pereira will cover their plans to increase LNG export capacity along the Gulf Coast. The popular format of a Business & Social Networking hour, with complimentary hors d'oeuvres and a cash bar, followed by an hour-long program, will begin at 5:00 pm in the Mezzanine.

Operators of North American unconventional assets have far exceeded expectations in delivering a secure, long term supply of natural gas. However, this supply surge has resulted in falling natural gas prices that have producers wondering when the demand side will arrive like the cavalry in a John Wayne western. Our speakers will address two sources of the coming uptick in demand – gas to liquids and NGL exports. What are the differences in regional impact of these demand sources. How do they differ in scale and timing? Do they each target a specific type of operator? Who are their main customers and what are the principal expectations of each? How can national, state and local governmental entities hinder or promote their growth? What issues are there to vet with public organizations? How dependent are they on global economic impacts?

Renato Pereira

Mr. Pereira has over 25 years of experience in the petrochemical industry, regulated natural gas pipelines and in deregulated trading and marketing. At Transco and Entergy/Koch, Mr. Pereira led the development of \$2 billion of regulated pipeline facilities adding in excess of 2 Bcf/d of capacity to the US grid. As President of Gulf South Pipeline, he directed an interstate pipeline with over 10,000 miles of pipe and 600 employees. Mr. Pereira holds a Bachelor's in Chemical Engineering and an MBA.

Timothy Vail

Timothy Vail's entrepreneurial career has spanned fuel cells to natural gas conversion to fuels. Previously, he was President of Accelergy Corporation, which focused on the commercialization of a broad range of energy conversion technologies. At Synthesis Energy Systems, he took the company public on NASDAQ, raising more than \$200 million for building their first commercial facility. As GM's Director of Commercialization for Fuel Cell Development, his responsibilities included developing GM's Shanghai fuel cell office. He holds a JD degree from the University of Houston and a Bachelor's in Economics from UT Austin.

Event Info

SPEAKER

Renato Pereira
Vice President, Origination
Cheniere Energy, Inc.

Timothy Vail
President, CEO,
Founder and Director
G2X Energy

LOCATION

Four Seasons Hotel
1300 Lamar
Houston, TX 77010

EVENT CONTACT

Chris Atherton
832-654-6612

MEMBERS

\$40 in advance, \$50 at door

NON-MEMBERS

\$45 in advance, \$50 at door

Development of the Brittle Shale Fracture Network Model

This talk discusses the workflow for the development of a brittle shale model using a data mining approach. A database of more than 1,000 fracture stages and associated microseismic mapping results in the Barnett Shale was assembled. The fracture database is comprised of fracture design parameters including treatment volumes, rates, proppant mass and size, perforation length, fracture pressure, surface pressure trend and fracture dimensions on horizontal well bores. The goal of this analysis is to establish the relationship between frac design, pressure and frac network geometry. Data mining techniques are used on this complex database to find possible hidden relationships to explain the nature of the data. The outcome of this study is to develop a predictive model for fracture networks in shale. Also, using the predictive model, improvements in the current fracture design in the Barnett shale are made.

Dr. Amir Nejad

Dr. Amir Nejad received his doctorate degree in Petroleum Engineering from Pennsylvania State University in 2011. His thesis dissertation is focused on development of reservoir characterization workflow for unconventional reservoirs with the help of artificial intelligence expert systems. He worked in the center for smart oilfield technologies (CiSOFT) and learned the IT aspect of oil exploration and production while earning his Master's degree in petroleum engineering at University of Southern California.

He joined StrataGen, the independent consulting arm of CARBO Ceramics, in 2012 and since then he is heavily involved in well completion and hydraulic fracture design evaluation using DANA® workflows (Data and Neural Analysis) for multiple operators in shale assets. He is an active member of SPE since 2004 and he is the author of more than 10 technical papers and the technical editor of a technical book ("Mechanics of Fluid Flow" published by Wiley-Scrivener).

Event Info

SPEAKER

Dr. Amir Nejad
Reservoir Engineer Consultant
StrataGen

LOCATION

Greenspoint Club
16925 Northchase Dr
Houston, Texas 77060

EVENT CONTACT

Jonathan Godwin
281-921-6526
jgodwin@carboceramics.com

MEMBERS

\$35 in advance, \$40 at door

NON-MEMBERS

\$35 in advance, \$40 at door

Reaching Deeper

With the largest fleet of deep, high-pressure coiled tubing, coupled with basin-specific expertise

Going Further

To find solutions to our customers' wellsite challenges, safely and efficiently

That's the IPS Advantage



Integrated Production Services

www.ipsadvantage.com

PROFESSIONAL REGISTRATION REVIEW COURSES FOR PETROLEUM ENGINEERING

The Courses covers topics on the Texas State Board Petroleum Engineering Professional Examination.

HOUSTON COURSES 8:00 AM - 5:00 PM

I August 19 thru 23, 2013

II October 7 thru 11, 2013

P: 405-822-6761 | E: bingwines@cox.net
winrockengineeringinc.com

ARE YOU FEELING THE EFFECTS OF THE **Great Crew Change?**

*Replenish
your company men
with competent
personnel...*



Signa's Wellsite Foreman Intern Training (WFIT) program does all the groundwork to provide operators with qualified company men. We screen, select and train optimal candidates, evaluating each of them throughout to ensure they're tailor-made for your company.

- Drilling or Completion
- Establish core skillsets
- Instill good habits
- Get quicker results
- Monitor progress



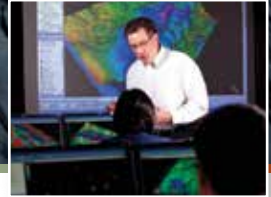
The WFIT program is a comprehensive 8-mo. training class utilized by large and small operators (As featured in *Offshore magazine*).

Signa Engineering Corp.
Houston, TX USA
www.signaengineering.com

Contact: Dave Roseland
281.774.1026
droseland@signa.net

Build Your Team's Core Competency.

12-week modular
training that adapts
to your needs.



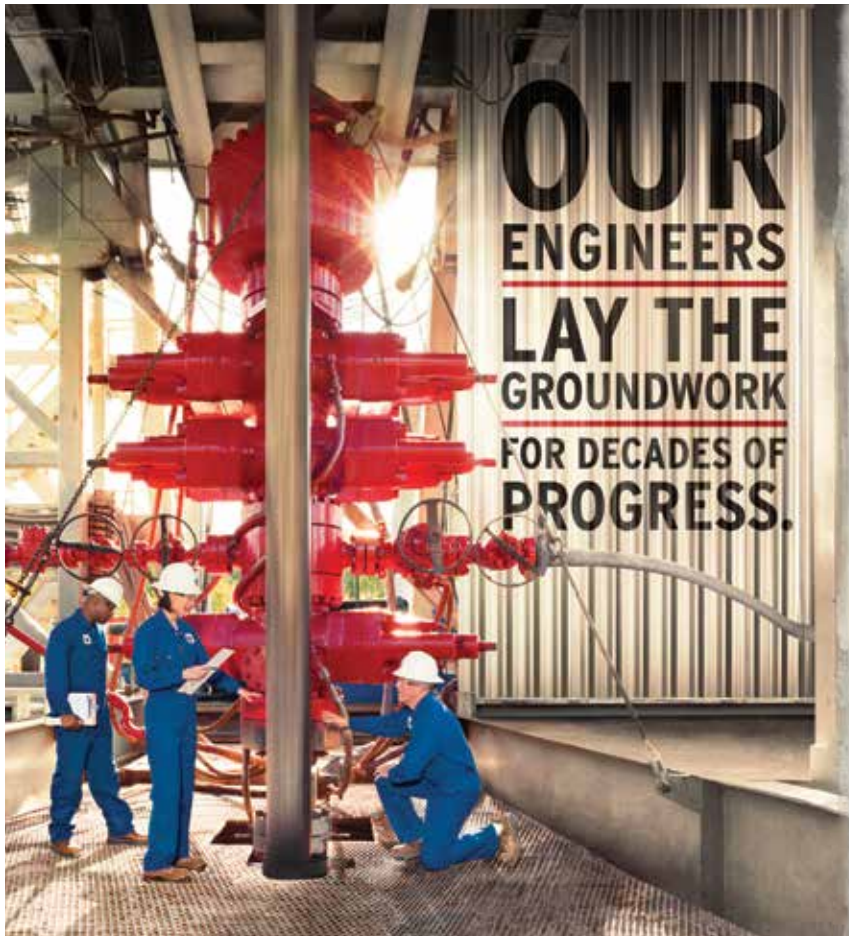
NExT is a mark of Schlumberger.
© 2013 Schlumberger.
All rights reserved. 13-PT-0088

The modular 12-week shale training program from NExT has the flexibility to meet your competency development goals for a wide range of skills and experience levels.

Our learning-by-doing approach integrates workflow, domain, and software instruction, so you can build your team's unconventional expertise.

The next course begins February 2014 in Houston.

Find out more at
www.slb.com/shaletraining.



**OUR
ENGINEERS
LAY THE
GROUNDWORK
FOR DECADES OF
PROGRESS.**

At Chevron, you'll join a team with the technology to take on big challenges, the integrity to do it responsibly, and the drive to keep the world moving forward. If you're up to the job, visit chevron.com/careers

Chevron is seeking experienced petroleum engineers for production, reservoir, reservoir simulation, drilling and completions positions.

**JOIN THE
CHALLENGE.**



An equal opportunity employer that values diversity and fosters a culture of inclusion. CHEVRON, the CHEVRON Halmark and HUMAN ENERGY are registered trademarks of Chevron Intellectual Property LLC. © 2013 Chevron U.S.A. Inc. All rights reserved.

WED
October 16

11:30 AM TO 1:00 PM

Digital Oilfield, Challenges and Risks

Digital Field technology has become the standard for green field development in our industry with brown field development moving toward greater levels of digitization. The digital field technology has evolved from only gathering data to online analysis and performing real time optimization during the past forty years. The industry also leverages the digital oilfield platform to reduce OPEX and CAPEX by reengineering workflows. These workflows have either replaced human activities in the work process making them more efficient or provided proactive operational and foreseeable optimization advice.

At the same time, the E&P industry is facing more high frequency and high volume data challenges from the technical side, and change management challenges from the non-technical side. These challenges reinforce the importance of technology as well as processes and people whose organic coupling is the foundation of the digital oilfield. We as an industry have struggled with achieving the right balance as we drill in more remote locations, increase collaboration among E&P engineers across multiple office locations at greater distances from the well site, require a better understanding of the geology and rock mechanics, and respond quicker to well performance related issues.

Fangda Qiu

Fangda Qiu is a Petroleum Engineer in Schlumberger's Information Solution group where he works on a variety of projects concerning Asset Optimization. Fangda received a B.S. in Petroleum Engineering from China University of Petroleum (Beijing) in 2008 and M.S. in Petroleum Engineering from Texas A&M University-College Station in 2010. He has held various assignments including production data analysis and mining, flow assurance and development of a new shale production forecasting method to highlight a few.



Event Info

SPEAKER

Fangda Qiu
Petroleum Engineer
Schlumberger Information Solution

LOCATION

Norris Conference Centers
9990 Richmond Ave., Ste. 102
Houston, TX 77042

EVENT CONTACT

Rick Morneau
281-315-9395
Rick@MorneauConsulting.com

MEMBERS

\$35

NON-MEMBERS

\$40

ULTERRA™

When Every Run Counts™

www.ulterra.com +1 817 293 7555

WED
October
9

11:30 AM TO 1:00 PM

US Oilfield Markets: How Pad Drilling is Driving Drilling Efficiency Up and Demand for Oilfield Services Down

15,000 horizontal wells in the Eagle Ford took 36 days to drill in 2010 and 23 days in 2012. Directional drilling systems were in those same wells 15 days in 2010 and 13 days in 2012. Two PDC bits were used below the intermediate string in 2010, but now just one. Pad drilling in 2013 has advanced those trends even farther in 2013: 12 day wells, five days of directional...The pace of acceleration in drilling efficiency may be without precedent in the industry and is having a profound impact on the oilfield's service and equipment sector.

Using data developed jointly with Oilfield Logix, Richard Spears will show how increasing efficiencies are creating US regional oilfield equipment and service markets that are falling despite rising new well counts.

Richard Spears

With an engineering degree from Oklahoma State University and graduate work in industrial engineering, Richard Spears has worked in the upstream oil and gas industry since 1979, starting as a field engineer for Halliburton. Today, Richard is one of the managing directors of Spears & Associates, an oilfield market research firm founded in 1965. The firm has 500 clients worldwide, including all major oil companies, all major service companies and over one hundred private and institutional investors. Richard has been with the firm since 1985.

In addition to his responsibilities as Chairman of the Board of Abrado International, Richard is on the board of directors of several additional oilfield service companies: Varel International, a global drill bit manufacturer; Federal, a subsea connector manufacturer; Allied Wireline, an openhole and cased hole logging company; and W-Technology, a manufacturer of MWD components. Board responsibilities include Audit, Compliance, Compensation and Strategy. Richard is a 25-year member of the Society of Petroleum Engineers.

Richard and his wife Carol have three grown children and live in Tulsa.



Event Info

SPEAKER

*Richard Spears
Managing Director
Spears & Associates, Inc.*

LOCATION

*Greenspoint Club
16925 Northchase Dr.
Houston, Texas 77060*

EVENT CONTACT

*Joe Tison
wtison@gtweed.com*

MEMBERS

\$35

NON-MEMBERS

\$40

Dyna-Drill
Manufacturers of
Drilling Motor Components

- Mud Motor Power Sections (Sizes: 2 7/8" to 11 1/2")
- Coil Tubing Power Sections (Sizes: 1 11/16" to 3 3/4")
- Matrix-3[®] Coated Bearings
- Precision Machining

www.dyna-drill.com **Power That Lasts™**

ppitech.net (713) 464-2200

PPI Engineering & Construction Services

Right of Way • Pipelines • Foundations
Engineering • Design

Global Deep Water Drilling in Potentially High Pressure Zones

Mr. Smith will discuss the economic and technological factors that are used in the analysis of the deep water plays worldwide.

J. Curtis Smith

Curtis Smith is a Director of Consulting at IHS CERA Consulting Americas and Asia Pacific practices. He helps companies assess strategic opportunities and forecast production and costs by leveraging the extensive US and International databases which are owned and maintained by IHS. Prior to joining IHS CERA Consulting, Mr Smith performed consulting in energy sectors of IHS and performing training and support for the company. Mr. Smith has worked with ConocoPhillips and Marathon Company, oil majors and with major law firms in the Houston area.

Mr. Smith has an MS in Geology from Brigham Young University, Provo, Utah

THU
October 17

11:30 AM TO 1:00 PM



Event Info

SPEAKER

*J. Curtis Smith
Director of Consulting
IHS CERA Consulting*

LOCATION

*Petroleum Club
800 Bell Street, 43rd floor
Houston, TX 77002*

EVENT CONTACT

*Owen Jones
207-590 5837
owen.jones@exxonmobil.com*

MEMBERS

\$35

NON-MEMBERS

\$40

We're
GROWING...

Introducing our Total Managed Displacement Services (TMDS™):

Our proprietary suite of wellbore cleanout tools, non-pollutant displacement chemicals, surface pit cleanout and fluids filtration services, and direct job validation.

Delivering the ultimate clean wellbore for maximizing completion success.



www.abrado-intl.com

Email us at: info@abrado-intl.com

FRAC or FICTION



FACT: No foreign proppant offers the security of supply and quality assurance that CARBO provides.

Why risk using any other proppant? For more than 30 years, CARBO Ceramics® has maintained the highest standards of quality from the mine to the wellsite. Don't put your multimillion dollar investment and future production at risk with marginal alternatives – trust CARBO to deliver superior, high-conductivity proppant to maximize asset performance.



Go online to test your knowledge
FracOrFiction.com

©2013 CARBO Ceramics, Inc.

VIKING ENGINEERING, L.C.
 CRITICAL WELL ENGINEERING CONSULTING SERVICES
 VIKING'S TEAM OF HIGHLY TRAINED PETROLEUM PROFESSIONALS LEND THEIR EXPERIENCE TO CREATIVE WELL DESIGNS.
 WE CAN HELP PLAN AND EXECUTE YOUR TOUGH WELLS.
 VISIT OUR WEBSITE: WWW.VIKINGENG.NET
 OR CALL: (281) 870-8455 IN HOUSTON

- PETROLEUM CONSULTING
- HPHT WELL DESIGN
- APB ANALYSIS
- PROJECT MANAGEMENT
- FAILURE ANALYSIS
- TRAINING

Rose & Associates
 Courses Consulting Software
 Improving E & P Effectiveness

Unconventional Resource Valuation Course (3 to 5 days)

UCRA Software
 To model, value and risk drilling in resource plays

lisaward@roseassoc.com

- New drilling and completion technologies
- Custom-engineered solutions
- Fit-for-purpose manufacturing
- Faster response.

www.tiwtools.com
 ENGINEERED TO FIT

TIW CORPORATION A Pearce Industries Company

281.955.2900
www.stress.com

Providing Engineered
Solutions

STRESS ENGINEERING SERVICES INC.
 DESIGN • ANALYSIS • TESTING

Comparing the Economics of Unconventional and Deepwater Mega-Projects

The growth of unconventional oil and gas activity in North America is hard to overstate. Shale-related oil and gas drilling activity now dominates North American rig counts and capital expenditures. Gas production in North America from all unconventional sources (tight sands, coal bed methane and shale gas) represents more than half of all production with shale gas representing more than 25% of domestic production. The contribution from shale gas has reversed the production decline and kept North American gas prices low. Liquids production from shales have also reversed domestic decline and are the current hotbed of activity.

Reserves and production from shales are sufficiently large that they compete with deepwater projects in attractiveness. This presentation compares the economics of unconventional drilling projects with deepwater and conventional international oil exploration and development projects. Comparably sized total projects (100 and 250 million BOE) for each project are analyzed with typical costs, timing, net cash flows and economic results illustrated. The net cash flow profiles of each project along with other risks, similarities and differences are illustrated.

Dr. D. Nathan Meehan

Dr. D. Nathan Meehan has more than 37 years of global experience in reservoir engineering, reserve estimation, hydraulic fracturing and horizontal well expertise. He currently serves as Senior Executive Advisor to Baker Hughes' executive management. Previously he served as president of CMG Petroleum Consulting, an independent consultancy firm providing petroleum engineering services to major, independent and national oil companies, and oilfield service companies; Vice President of Engineering for Occidental Oil & Gas; and General Manager Exploration & Production Services for Union Pacific Resources.

Dr. Meehan earned his BSc degree in Physics from the Georgia Institute of Technology, his MSc degree in Petroleum Engineering from the

University of Oklahoma, and his PhD degree in Petroleum Engineering from Stanford University. He previously served as Chairman of the Board of the CMG Reservoir Simulation Foundation and a Director of the Computer Modeling Group, Ltd., as Director of Vanyoganeft Oil Company, Nizhnyvartosk, Russia, as Director of Pinnacle Technologies, Inc., as a Director of the Society of Petroleum Engineers and as a Director of JOA Oil & Gas BV. He is the recipient of the Lester C. Uren Award for Distinguished Achievement in Petroleum Engineering and the Degolyer Distinguished Service Medal from the Society of Petroleum Engineers. Dr. Meehan is a licensed professional engineer in four states and recently returned from an 18-month humanitarian service mission in Asia.



Event Info

SPEAKER

*Dr. D. Nathan Meehan
Baker Hughes Incorporated*

LOCATION

*Greenspoint Club
16925 Northcase Drive
Houston, Texas 77060*

EVENT CONTACT

*Matthew Strom
281-618-7848
Matthew_Strom@swn.com*

MEMBERS

\$35

NON-MEMBERS

\$40



TO BE SURE

Increase the reliability of your pipeline project with Flexpipe Systems' proven solutions

Flexpipe Systems' corrosion resistant linepipe products:

- Are available in 2", 3" and 4" ID
- Have rating pressures up to 2,000 psi
- Operate in temperatures up to 180°F (82°C)
- Come in spoolable or reel-less packaging

With over 55 million feet of linepipe and 80,000 fittings installed worldwide, we have the answers for your next pipeline challenge.

ShawCor - when you need to be sure



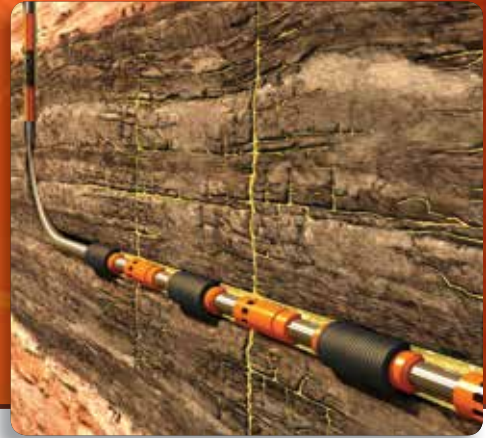
A SHAWCOR COMPANY
flexpipesystems.com



ENERGY SERVICES • GLOBAL SOLUTIONS
shawcor.com

TAM SOLUTIONS

PROVEN, PREDICTABLE, PACKER PERFORMANCE



TAM PosiFrac™ Systems:

With PosiFrac™ you have an all-inclusive, multi-stage system for open-hole hydraulic fracture applications. And you have the experts to run it from service centers in your region. You'll get your completion on depth, on time, with the best swellable packers available. And that's as complete as it gets.



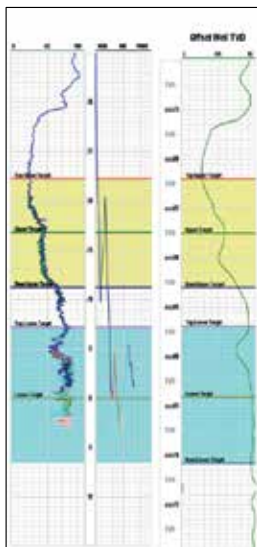
TAM INTERNATIONAL
Inflatable and Swellable Packers
45 YEARS OF SUCCESS

WELL INTERVENTION | DRILLING & COMPLETIONS | UNCONVENTIONAL RESOURCES | RESERVOIR OPTIMIZATION

www.tamintl.com



www.geosteering.com



Geosteering Services

Highly qualified personnel with 20+ years DD & LWD experience

24/7 Real-time monitoring or reports from LAS files

Proprietary software

Geosteering Software

TST interpretation for GR only measurements

Image displays / interpretation of azimuthal GR, resistivity or density measurements

Resistivity modelling / interpretation for LWD propagation resistivity

Software sales, training and technical support

info@geosteering.com

Call 281 573 0500

PRODUCTIONER

USED BY EVERYONE,
FROM THE FIELD PUMPERS

ALL THE WAY UP TO MANAGEMENT

What our customers are saying:
"Productioner is a great data repository and analysis tool. Data entered in the field is immediately available to corporate office."

- FEATURES**
- FIELD DATA CAPTURE
 - ALLOCATIONS
 - REPORTS & GRAPHS
 - CUSTOMIZABLE TEMPLATES
 - FULLY MANAGED SERVICE



Mi4 Corporation
Ph: (713) 401-9584
sales@productioner.com
www.productioner.com



24/7 SUPPORT HOTLINE (866) 421-6665

Produced Water Management - Waste to Value

Produced Water Management has become a worldwide concern. There are a growing number of mature fields, and many countries have already established strict discharge regulations in order to prevent and/or eliminate pollution resulting from the discharge of produced water.

Local conditions and requirements vary significantly with regional boundaries set geologically, geographically or politically. Solutions developed to address these local conditions and requirements many times must be solutions which are region-specific. As a result, the overall solution may require several separate steps for complete resolution (reduction, chemical removal, profile control, separation, treatment, disposal and waterflooding use, etc.). One point remains true in all cases. The end result obtained of proper produced water management in the oil and gas industry is that it is a savings to the company, not a cost.

E. Dwyann Dalrymple

Mr. Dalrymple is an Industry Development Manager on Global Water Management for Nalco Champion and the Scientific Development Advisor to the Board of the Americas-Middle East-Africa-Asia Produced Water Community. Until November 2009, he served as a Scientific Advisor with Halliburton's Conformance Technology/Production Enhancement Group in Duncan, OK. He has over 30 years experience with in depth expertise in water control and well preparation including conformance technology and improved oil recovery methods. He has successfully consulted on procedures and job recommendations around the world. His most recent work led to development and application of several novel chemical systems for water shutoff, gas shutoff, and improved wellbore integrity. He has authored hundreds of publications on these topics and holds 50 patents related to Conformance technology, acidizing, sand control, fracturing and cementing.

Mr. Dalrymple was an SPE Distinguished Lecturer for 2010-2011 season.

Event Info

SPEAKER

Dwyann Dalrymple
Industry Development Manager on
Global Water Management
Nalco Champion Company

LOCATION

Norris Westchase Center
9990 Richmond Ave., Suite 102
Houston, Texas 77042

EVENT CONTACT

Amy Timmons
713-836-6563
Amy.Timmons@Weatherford.com

MEMBERS

\$35 (\$45 Walk-Ins)

NON-MEMBERS

\$40 (\$45 Walk-Ins)

VIBRATION TECHNOLOGY
LEADING THE INDUSTRY IN STUCK PIPE RECOVERY
INNOVATIVE TECHNOLOGY FOR REMOVING STUCK TUBULARS

- + WORKOVER
- + COMPLETIONS
- + DRILLING

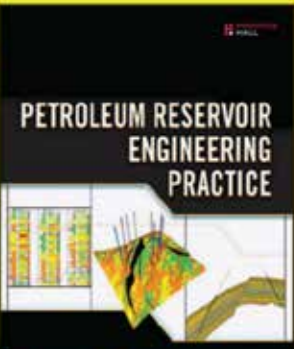


www.layne.com

Layne
Vibration Technology

The Up-To-Date,
Practical Guide to Modern
Petroleum Reservoir
Engineering by
DR. NNAEMEKA EZEKWE

Available from Amazon.com,
informIT.com, and other
fine resellers.



PRENTICE HALL | **informIT.com**

DEDICATED TO DELIVERING
STRATEGIC VALUE FOR
OUR CLIENTS.



We are an independent, multi-disciplined
technical consultancy servicing the international
oil and gas industry.

- OPERATIONS ASSURANCE
- SUBSEA PRODUCTION REALIZATION
- FLOW ASSURANCE
- SEPARATION SYSTEMS
- GAS TREATMENT & TRANSPORT
- PRODUCED WATER MANAGEMENT
- SAND & SOLIDS MANAGEMENT
- CONTAMINANTS MANAGEMENT
- CHEMICAL MANAGEMENT
- PROCESS/PRODUCTION OPTIMIZATION
- PROCESS TROUBLESHOOTING
- OPERATIONS PERFORMANCE STRATEGY (OPS)
- SYSTEMS AWARENESS TECHNICAL TRAINING

MAXIMIZING PERFORMANCE THROUGH OPERATIONAL EXCELLENCE

contact@maxoilsolutions.com • www.maxoilsolutions.com

advanced FRAC SCHOOL

October 21-25, 2013
Houston, TX

For More Information Visit:
www.fracschool.com
or call 832.833.2569

November 11-15, 2013
Houston, TX

FRAC SCHOOL

Measure Hydrocarbon Stage Production ...No tools, coiled tubing or wireline



Tracer technology to evaluate stimulation and well design:

- ◆ Measure actual oil and gas production per stage
- ◆ Results equivalent to 30+ days of production logging
- ◆ Diagnose fracture communications to offset wellbores
- ◆ Confirm toe flow to verify release of all plugs

Knowing what's going on at the bottom keeps you on top.

To learn more call or email:
Tel: 281 291 7769
Email: reservoir@tracerco.com
www.tracerco.com/reservoir-characterisation



WED
October 23

11:30 AM TO 1:00 PM

Adjusting the Basis of Design Why Facilities Engineers Need to Think

Great care is taken in developing an initial basis of design prior to the start of a FEED or detailed design. Unfortunately this normally results in a set of design throughput rates, pressures and temperatures which may not take into account the practical aspects these parameters may have on equipment selection and sizing. In addition, history has shown that as more information is obtained about the target reservoirs the anticipated demands on the production facility tend to change during the design, during the construction and even after the facility is installed.

Optimizing facility design for the specific parameters in the basis of design is often counterproductive. Facilities engineers need to understand the rationale behind the basis of design and question the assumptions in light of practical choices of equipment selection and system design. To do this properly, the facilities engineer must use judgment in selecting equipment by understanding the accuracy of the data used to develop the BOD as well as understanding the effects on equipment performance of changes in flow parameters.

Ken Arnold

Kenneth E. Arnold has over 45 years of industry experience with 16 years at Shell Oil Company. He founded Paragon Engineering Services in 1980 which was voted one of the best places in Houston to work by the Houston Business Journal. In 2005 Paragon was purchased by AMEC. In September 2007, Ken retired from AMEC and formed K Arnold Consulting, Inc (KACI). In 2010 he joined WorleyParsons as a part-time Senior Technical Advisor while maintaining KACI for independent consulting work.

Ken is co-author of two textbooks and author of over 50 technical articles on project management and facilities design. He has twice been chosen as an SPE distinguished lecturer. He is the VP of

Finance on the Board of SPE, Treasurer-Elect of The Academy of Medicine, Engineering and Science of Texas and a former member of the Marine Board of the National Research Council. He is currently Chair of the National Research Council Committee preparing a report for the Department of the Interior on Evaluating the Effectiveness of Safety and Environmental Management Systems for Offshore Operations.

Ken has taught facilities engineering at the University of Houston as well as for several oil companies. He is a registered professional engineer and serves on the advisory board of the engineering schools of Tulane University and Cornell University.



Event Info

SPEAKER

*Ken Arnold
Sr. Technical Advisor
WorleyParsons*

LOCATION

*Norris Westchase Center
9990 Richmond Ave., Suite 102
Houston, Texas 77042*

EVENT CONTACT

*Brad Nelson
832-230-8246
bnelson@maxoilsolutions.com*

MEMBERS

\$35

NON-MEMBERS

\$40

The Future of Water in Unconventional Oil and Gas



Water management is complex and rapidly evolving, creating both risks and opportunities for operators, service providers, and investors. Two new, definitive reports by the water and unconventional oil and gas experts from IHS and CAP Resources bring together current best field practices, actual detailed spending levels, cost data, market players, scenario drivers, and opportunity insights essential to improving strategies.

Two reports:

Water Management Strategies in the US
Water Market Opportunities in the US

For additional information:

Maria Bertram

1 781 301 9438

maria.bertram@ihs.com

ihs.com/waterunconventionals



PREMIUM CONNECTIONS

Meeting your exacting requirements.

SealLock® | WedgeLock®
 TKC™ | TS™
 connection technology



HUNTING

www.huntingplc.com

© 2013 Hunting



Drilling Surveillance and Geosteering in Real-Time!

Petrolink is uniquely vendor neutral allowing you to bring your data into your own environment. We provide true real-time interoperability between rig site contractors and your drilling and geoscience office teams to Make Better Decisions, Faster!

www.petrolink.com
sales@petrolink.com



New Version

MUDPRO Drilling Mud Reporting Software



Pegasus Vertex, Inc.

713-981-5558 | sales@pvisoftware.com | www.pvisoftware.com

www.intertek.com



Upstream Services

6700 Portwest Drive | Houston, TX 77024

713.479.8400

westportservices@intertek.com

What Can Nanotechnology Do for the Oil and Gas Industry?

With changing oil and gas prices, as well as political pressure, there is a need to improve the yield from domestic oil and gas plays. How can nanotechnology accomplish this? One of the challenges with a frac job is enabling the largest volume of the frac to be accessed by the proppant. Using nanotechnology allows for the creation of a lightweight but strong proppant with superior roundness and particle size uniformity. Environmental pressure and legislation are going to be critical factors in water usage for fracking. In particular, the ability to economically purify frac and produced water for reuse is a growing need in the US. Nanotechnology, developed as part of an EPA grant, allows for the fabrication of functionalized non-fouling membranes that can accomplish this. Finally, how can you be sure that it is not your frac that is responsible for the claim of damage to the environment? These issues will be discussed in context of technology developed in the Barron research group.

Dr. Andrew R. Barron

After having gained his BSc and PhD degrees from Imperial College (London) and performing post-doctoral research at the University of Texas at Austin, Barron spent eight years as a Professor of Chemistry at Harvard University before moving to Rice University in 1995 where he is the Charles W. Duncan, Jr. – Welch Chair of Chemistry and Professor of Materials Science. He is also an Honorary Chair of Nanotechnology in the College of Engineering at Swansea University in the UK.

He is the author of over 380 publications, 20 Patents, 5 books, and has graduated 30 PhD students. His early research focused on the chemistry of aluminum and related elements and spanned catalysis, electronic materials and nanotechnology. His current research involves the application of nanotechnology to fundamental problems in energy and health research. His research group has projects involving water purification, down-hole sensors, carbon dioxide mitigation, and cancer treatment.

Prof. Barron is a Fellow of the Royal Society of Chemistry, and the recipient of several awards, including: Humboldt Senior Scientist Research Award, the Corday Morgan Medal, the Meldola Medal, and the first Welch Foundation Norman Hackerman Award. In 2009 Barron was appointed as the Prince of Wales Visiting Innovator. In 2011 he won both the Houston Technology Center's Lifetime Achievement Award in Nanotechnology and the World Technology Award (in Materials).

In addition to teaching in chemistry and materials science, Prof. Barron created the first educational programs at Rice University to span the schools of Science, Engineering and Management. For relaxation Barron races cars, as both an amateur and professional, on both sides of the Atlantic.

Event Info

SPEAKER

Dr. Andrew R. Barron
Professor
Rice University

LOCATION

Norris Westchase Center
9990 Richmond Ave., Suite 102
Houston, Texas 77042

EVENT CONTACT

Skip Davis
281-359-8556
skdavis@technologyintermediaries.com

MEMBERS

\$35

NON-MEMBERS

\$40

Directionally challenged?

If your directional drilling program is more challenging than you expected, maybe you need a new directional driller. Maybe you need Ryan Directional Services, Inc.

Ryan has experience in virtually every important oil and gas shale play. We know the potential roadblocks and how to address them before they cost you money. And that takes drilling to a new level of efficiency.

Call Ryan at 281.443.1414 and see how our directional drilling program will change your experience from challenging to rewarding.

www.nabors.com



RYAN DIRECTIONAL SERVICES, INC.
A NABORS COMPANY

PetroSkills®

Build Your Foundation

To maximize convenience, PetroSkills will deliver our most popular courses a few more times in Houston before the end of 2013



- **Basic Petroleum Engineering Practices – BE:**
Nov 18-22
- **Production Operations 1 – PO1:**
Dec 2-13
- **Applied Reservoir Engineering – RE:**
Nov 4-15, Dec 2-13
- **Completions and Workovers – CAW:**
Nov 11-15

For details on these or our other 250 sessions in the Gulf Coast, contact Patty Davis, (832) 426-1203 or patty.davis@petroskills.com, or see details and full selection at www.petroskills.com

Did you get your copy of our 2013-14 Training Guide?
If not, sign up for free at www.petroskills.com/contact



Engineering consulting and training services to maximize the value of your investment in flow assurance

SPT Group has one of the world's leading dedicated flow assurance consulting teams working with multiphase flow technology in wells and pipelines.

Every day we work with the world's leading energy corporations and oil and gas service companies to locally deliver specialist consulting and training services through our global offices and training facilities.

To learn more about the value we offer please visit www.sptgroup.com

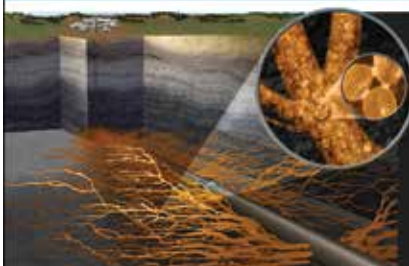
SPT GROUP
A Schlumberger Company

DIRECTIONAL
AND
HORIZONTAL
DRILLING
SPECIALISTS



WWW.NOVADIRECTIONAL.COM

Innovative Proppant Technology



OilPlus™
PROPPANTS

New OilPlus™ Proppants
Provide Enhanced Oil
Recovery for Your Well.

E-mail us at oilfield@momentive.com.

MOMENTIVE

Bayesian Logic for Fun and Profit

If an athlete tests positive for performance-enhancing drugs, what is the probability that he or she is actually doping? If police increase foot patrols in an urban neighborhood but property crime increases anyway, should the foot patrols be declared ineffective and discontinued?

In an oil and gas context, suppose you drill one of two fault blocks which are adjacent to your producing field and you find it to be hydrocarbon-bearing. By how much should you increase your chance of success for the other block? If you run a well test and the results indicate that the reservoir compartment is large, how sure should you be that the compartment is, in fact, large?

“Bayesian logic” may sound arcane, but it is critical to correctly incorporating new information into our view of the world (or reservoir). It is even how one explains the infamous Monte Hall problem, in which a contestant who has chosen a box (which may or may not contain a prize) has to decide whether to trade for a different box.

Patrick Leach

Patrick Leach has over 30 of experience in the energy industry, ranging from New Orleans to Indonesia, Scotland, and now Houston. He joined Decision Strategies Inc. in 2004 as a Senior Consultant, and became CEO of the company in August of 2011. He is the author of *Why Can't You Just Give Me the Number?* - An executive's guide to using probabilistic thinking to manage risk and to make better decisions. He was also an SPE Distinguished Lecturer during 2012-2013.

Mr. Leach has a Bachelors of Science degree from the University of Rochester and an MBA from the University of Houston. He is a Charter Fellow in the Society of Decision Professionals, and holds memberships in the American Association of Petroleum Geologists, Society of Petroleum Engineers, the Decision Analysis Affinity Group, and the Institute for Operations Research and Management Science.

Event Info

SPEAKER

Patrick Leach
Chief Executive Officer
Decision Strategies Inc

LOCATION

The Courtyard on St. James Place
1885 Saint James Place
Houston, TX 77056

EVENT CONTACT

Miles Palke
713-750-5490
miles_palke@ryderscott.com

MEMBERS

\$35 Pre-Registered / \$45 Walk-in

NON-MEMBERS

\$40 Pre-Registered / \$45 Walk-in



Technical Documentation Development and Management Consulting



**Documentation help = more
available engineering time**

Technical Writing

- + Develop content
- + Multiple authors – consistent voice
- + Formatting, grammar & readability
- + Develop / edit graphics

Management Consulting

- + Documentation & project management
- + Procedures, processes & workflow
- + RFPs, RFQs & contract management

- Quick turnaround
- On-demand resource
- Turnkey publication

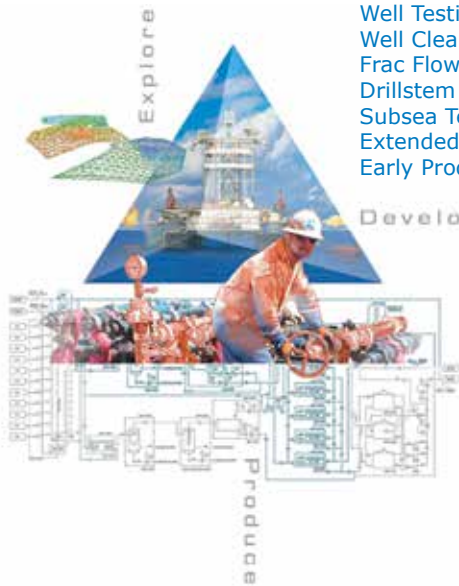


ZAETRIC®
www.zaetric.com

Delivering Testing Results in Every Phase

Production Testing Services

- Well Testing
- Well Cleanup
- Frac Flow Back
- Drillstem Testing
- Subsea Test Trees
- Extended Well Tests
- Early Production Facilities



© TETRA and the TETRA logo are registered trademarks of TETRA Technologies, Inc. All rights reserved.

tetrathec.com

SEE THE ENERGY WITH TGS' DATA INTEGRATION SOLUTION

See and access all of your G&G data with Volant, TGS' geoscience data and application integration solution.

For more information contact TGS at:
Tel: +1 713 860 2100
Email: info@tgs.com

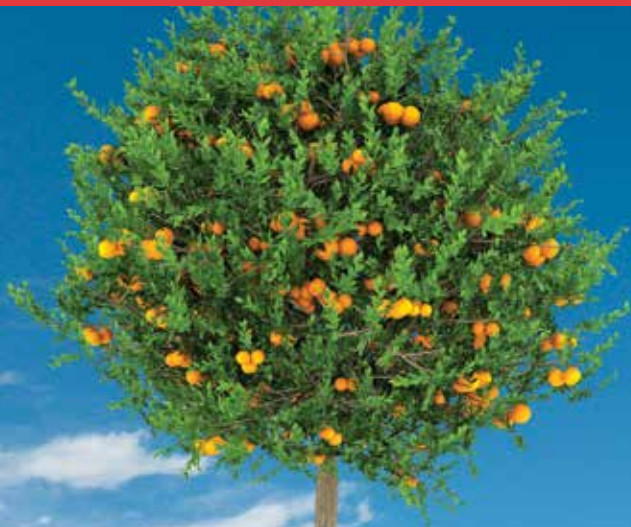


WWW.TGS.COM

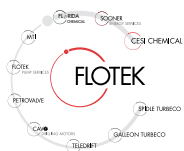
© 2013 TGS-NOPEC GEOPHYSICAL COMPANY ASA. ALL RIGHTS RESERVED.



ORANGE IS THE NEW GREEN



Flotek's citrus-based, environmentally friendly **CnF**® fracturing additives will revolutionize the way the world thinks about fracturing and will improve your production.



For more information contact
cesimkt@flotekind.com
or call
832-308-CESI (2374)

Why can Weatherford deliver more real time data at the wellsite than any other mudlogging company?

Tim has cabin fever.



EXCELLENCE FROM THE GROUND UP™

Our Global Operations Manager for Surface Logging Systems, Tim, is all smiles these days. That's because he and his team recently designed a new state-of-the-art mudlogging cabin. The spacious interior makes room for more laboratory services at the wellsite. Now exploration companies have access to more data in real time, so they can make better decisions faster. It's one more way Weatherford Mudlogging is committed to Excellence from the Ground Up.

SURFACE LOGGING SYSTEMS
www.weatherford.com/surfacelogging
mudlogging.services@weatherford.com



Completion Design Methodology for Early Exploitation/ Exploration Shale Wells

This presentation will involve a review of basic stimulation concepts to consider in the design of exploitation and/or exploration shale plays. An important key that will be highlighted: Simplicity to provide the best chance of execution success but proper engineering to provide the best gauge of the play's economic potential.

Darrell Hebert

Darrell Hebert is currently Anadarko's Global Technology Completion Manager, with an anticipated upcoming change to Sr. Drilling Advisor. He has 36 years' experience in the oil & gas industry in various engineering and management positions with a primary focus on completions. He began his career with Mobil Oil Corporation with assignments covering the GOM, onshore and major international projects including an international ex-pat assignment in Qatar. His last 13 years has been with Anadarko, where he has rotated in assignments between global technology and various asset groups. Darrell has been very active in the past 6 years in stimulation support for major APC shale play positions, including the Haynesville, Eagle Ford, Marcellus and Utica. He is currently Chairman of the Completion Engineering Association and is an industry representative for the TAM Crisman Institute, UT Joint Industry Projects, and RPSEA.

Event Info

SPEAKER

Darrell Hebert
Global Technology Completion
Manager
Anadarko Petroleum Corp.

LOCATION

Norris Westchase Center
9990 Richmond Ave., Suite 102
Houston, Texas 77042

EVENT CONTACT

Andrea Hersey
281-646-2805
andrea.hersey@momentive.com

MEMBERS

\$40

NON-MEMBERS/WALK-INS

\$45

**SMART EARLY KICK DETECTION-
WHEN EVERY SECOND COUNTS...**

MezurX

**New innovative solutions for detecting fluid anomalies
and reducing well control risk using FADS™**

- ✓ Faster – earlier detection than conventional systems
- ✓ Reliable – minimal maintenance, remote operation
- ✓ Easy to Install – minimal modifications to existing rigs
- ✓ Field Proven – in use now. On/offshore applications

mezurx.com

COMMITTEE COMMUNITY SERVICE

FRI
October 11

9:00 AM TO 2:00 PM

SkillsUSA DISTRICT VIII FALL LEADERSHIP CONFERENCE

SkillsUSA District VIII Fall Leadership Conference at MO Campbell Center in Aldine ISD provides students information on career and scholarship opportunities through SPE. Volunteers are needed to answer questions from students about the O&G industry and hand out information. This is held in an education center and we had around 1,000 students come through last year.

EVENT LOCATION

*M.O. Campbell Center in Aldine ISD
1865 Aldine Bender Rd
Houston, TX 77032*

CONTACT

*Amy Timmons
713-832-6563
Amy.Timmons@Weatherford.com*

SAT
October 19

11:00 AM TO 5:00 PM

ENERGY DAY 2013

SPE-GCS will have an exhibit booth at Energy Day 2013 in Herman Square, City Hall in downtown Houston which is a free, family friendly festival highlighting and educating about the role of all forms of energy in our daily lives. This is from 11AM – 5PM and we can use volunteers for morning and afternoon time slots. Last year there were 15,000 attendees and 60 exhibits.

EVENT LOCATION

*Herman Square, City Hall
901 Bagby
Houston, TX 77002*

CONTACT

*Amy Timmons
713-832-6563
Amy.Timmons@Weatherford.com*

COMMITTEE YOUNG PROFESSIONALS

SAVE THE DATE: PROFESSIONAL SWE NETWORKING

Wine and olive oil tasting with hors d' oeuvres!

DATE

*October 10, 2013
6:00 PM - 8:00 PM*

LOCATION

*The Downtown Club
1100 Caroline Street
Houston, TX 77002*

CONTACT

*Brittany Niles
281-782-8194
Brittany.Niles@shell.com*

COMMITTEE EDUCATION

2014-2015 SPE-GCS SCHOLARSHIP

Available to students who maintain a GPA of 3.0 or higher and are majoring in petroleum engineering, geology, or related discipline. Note: non-petroleum engineer or geology majors who complete an internship with a company in the Oil & Gas industry are also eligible.

TO APPLY

Log on to the SPE Gulf Coast Section homepage and select the Scholarship committee page. A link to instructions and the online application can be found there.

QUESTIONS

gcs-scholarship@spemail.org

APPLICATION

<http://spegcs.org/scholarship-application-instructions>

DEADLINE

Complete scholarship form by 2/12/2014

OIL PATCH ORIENTATION

This seminar is one of the most popular SPE programs. The course is designed as non-technical audio-visual guided tour through the oil patch, illustrating the basic equipment and techniques used in the discovery, development and production of petroleum.

The event will begin with an introduction and an outline of the day. The following topics will be discussed: the economics & future of the petroleum industry, theory of the origins of hydrocarbons, reservoir parameters, geology of petroleum & geophysics, drilling basics, well logging, well completions, reservoir drive mechanisms, production equipment and midstream & downstream topics.

SPEAKERS

John Farina Ken Arnold
Ron Hinn Marty Stetzer
Susan Howes

LOCATION

Hilton Houston North
12400 Greenspoint Dr
Houston, TX 77060

CONTACT

Regina Eco
713-308-0329
petrolera@gmail.com

PRICE

\$350 (ends 11/15/2013)

PHDWIN™

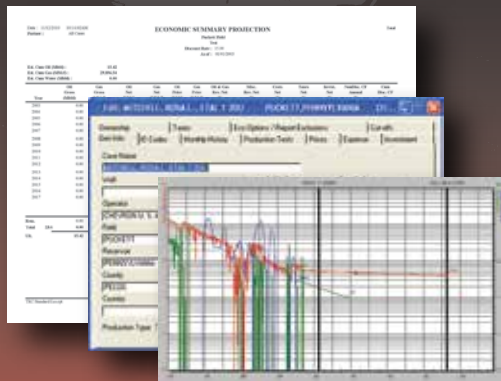
Integrated Economics & Decline Curve Analysis

NOW EVEN MORE POWERFUL WITH

PHDRMS™

Reserves Management System

The *complete solution* for evaluating, managing, and reporting reserves and performance data.



Schedule an **online**
presentation
TODAY!

TRC Consultants, LC 888-248-8062 www.phdwin.com

SPE GULF COAST SECTION DIRECTORY

Your guide to your organization leaders

Officers

CHAIR

Mike Strathman, The Trinity Group, Inc.
713-614-6227
mike-strathman@att.net

VICE-CHAIR

Jeanne Perdue, Occidental Oil and Gas
713-215-7348
jeanne_perdue@oxy.com

SECRETARY

David Flores, Consultant
281-381-5828
david_p_flores@yahoo.com

TREASURER

Robert Bruant, Jr., BP America, Inc.
281-366-2157
Robert.Bruant@bp.com

VICE TREASURER

Lucy King, Miller and Lents, Ltd.
713-308-0343
lking@millerandlents.com

CAREER MANAGEMENT

Patty Davis, PetroSkills
832-426-1203
Patty.Davis@petroskills.com

COMMUNICATIONS

Valerie Martone, Anadarko
832-636-3196
Valerie.Martone@anadarko.com

COMMUNITY SERVICES

Amy Timmons, Weatherford
713-836-6563
amy.timmons@weatherford.com

EDUCATION

Gabrielle Guerre, Ryder Scott
713-750-5491
gabrielle_guerre@ryderscott.com

MEMBERSHIP

Xuan (Sun) VandeBerg Harris, Consultant
832-444-5143
xuan.harris@gmail.com

PAST CHAIR

Steve Baumgartner, Marathon Oil Corp.
713-296-3190
sbaumgartner@marathonoil.com

PROGRAMS

David Tumino, Murphy Oil Corp.
281-717-5123
tuminospe@hal-pc.org

SOCIAL ACTIVITIES

Jim Sheridan, Baker Hughes
281-432-9202
jim.sheridan@bakerhughes.com

TECHNOLOGY TRANSFER

Carol Piovesan, APO Offshore
281-282-9291
cpiovesan@apooffshore.com

YOUNG PROFESSIONALS

Simeon Eburi, Chevron
simeon.eburi@chevron.com
806-544-0829

DIRECTOR 2012-14

Alex McCoy, Occidental Oil and Gas
713-366-5653
alexander_mccoy@oxy.com

Kevin Renfro, Anadarko

832-636-8613
kevin.renfro@anadarko.com

Wolfgang Deeg, Shell

281-544-8279
wjfdeeg@spemail.org

DIRECTOR 2013-15

Trey Shaffer, ERM
281-600-1016
Trey.Shaffer@erm.com

John Lee, UH

713-743-4877
wjlee3@uh.edu

Deepak Gala, Shell

281-544-2181
deepak.gala@shell.com

SPE GULF COAST NORTH AMERICA REGIONAL DIRECTOR

Bryant Muller, Halliburton
281-818-5522
Bryant.Mueller@halliburton.com

Committee Chairs

AWARDS

James Rodgerson, BP
281-221-4085
james.rodgerson@bp.com

CONTINUING EDUCATION

Nii Ahele Nunoo, NOV
507-304 5416
Nii.Nunoo@nov.com

ESP WORKSHOP

Noel Putscher, Newfield
281-674-2871
nputscher@newfield.com

GOLF

Cameron Conway, Cactus Pipe
281-217-0660
cconway@cactuspipe.com

INTERNSHIPS

Gabrielle Guerre, Ryder Scott
713-750-5491
gabrielle_guerre@ryderscott.com

NEWSLETTER

John Jackson, CCR Technologies
713-998-3121
editor@spgcs.org

SCHOLARSHIP

Tanhee Galindo, BASF
713-428-4919
tanhee.galindo@basf.com

SPORTING CLAYS

Paul Conover, NOV
713-346-7482
paul.conover@natoil.com

TENNIS

Gurjeet Jauhar, Baker Hughes
832-559-4415
gurjeet.jauhar@bakerhughes.com

WEB TECHNOLOGY

Shivkumar Patil, Aker Solutions
713-369-5352
Shivkumar.Patil@akersolutions.com

SECTION MANAGER

Kathy MacLennan, SPE-GCS
713-779-9595 x 813
kmacclennan@spe.org

Study Group Chairs

BUSINESS DEVELOPMENT

Steve Mullican, Grenadier Energy Partners
281-907-4120
smullican@grenadierenergy.com

COMPLETIONS & PRODUCTION

Mark Chapman, CARBO Ceramics
281-921-6522
mark.chapman@carboceramics.com

DIGITAL ENERGY

Rick Morneau
281-315-9395
Rick@MorneauConsulting.com

DRILLING

Joe Tison, Greene Tweed
281-784-7805
wtison@gtweed.com

GENERAL MEETING

Raja Chakraborty, Shell
281-544-2148
Raja.Chakraborty@shell.com

HEALTH, SAFETY, SECURITY, ENVIRONMENT AND SOCIAL RESPONSIBILITY

Trey Shaffer, ERM
281-600-1016
trey.shaffer@erm.com

INTERNATIONAL

Owen Jones, ExxonMobil
Development Company
832-624-2019
owen.jones@exxonmobil.com

NORTHSIDE

Naval Goel
650-307-7267
navalgoel@hotmail.com

PERMIAN BASIN

Amy Timmons, Weatherford
713-836-6563
amy.timmons@weatherford.com

PETRO-TECH

Marci Nickerson, Consultant
713-446-3400
mnick52@sbcglobal.net

PROJECTS, FACILITIES, CONSTR.

Bill Kinney, Wood Group Kenny
281-646-4198
william.kinney@woodgroupkenny.com

RESEARCH & DEVELOPMENT

Skip Davis, Technology Intermediaries
281-359-8556
skdavis@technologyintermediaries.com

RESERVOIR

Jose Villa, Shell
281-544-2612
j.villa@shell.com

WATER & WASTE MANAGEMENT

Kayli Clements, Schlumberger
281-561-1446
kclements@slb.com

WESTSIDE

Andrea Hersey, Momentive
281-646-2805
andrea.hersey@momentive.com

ADVERTISE IN THIS NEWSLETTER OR ON THE SPE-GCS WEBSITE

Connect is printed 12 times per year and contains premium positions for advertisers wanting to reach some of the most influential oil & gas professionals in the world. We are still selling ads for the 2013-2014 program year, and our ad sizes have been updated. Please visit the SPEGCS website for more information regarding ad pricing and specifications.

FOR INFORMATION ON ADVERTISING IN THIS NEWSLETTER OR ON THE SPE-GCS WEBSITE, PLEASE CONTACT:

Pat Stone, Star-Lite Printing, Inc
281-530-9711
starlite1@sbcglobal.net

CONNECT

Information

Newsletter Committee

CHAIRMAN | John Jackson
editor@spegcs.org

AD SALES | Pat Stone
starlite1@sbcglobal.net

BOARD LIAISON | Valerie Martone

EDITOR/DESIGN | Deuce Creative
deucecreative.com

SPE Houston Office

GULF COAST SECTION MANAGER

Kathy MacLennan | kmaclellan@spe.org

GCS ADMINISTRATIVE ASSISTANT

Sharon Harris | sharris@spegcs.org

HOURS & LOCATION

10777 Westheimer Road, Suite 1075

Houston, Texas 77042

P 713-779-9595

F 713-779-4216

Monday - Friday 8:30 a.m. to 5:00 p.m.

Photo Submissions

We are looking for member photos to feature on the cover of upcoming issues! Photos must be at least 9" by 12" at 300 DPI. Email your high resolution picture submissions to:
editor@spegcs.org

Change of Address

To report a change of address contact:
Society of Petroleum Engineers
Member Services Dept.
P.O. Box 833836
Richardson, Texas 75083-3836
1.800.456.6863
service@spe.org

Contact

For comments, contributions, or delivery problems, contact editor@spegcs.org.



**When time is money,
Wellsite Geoscience is
money well spent.**

Whether you're exploring a basin, producing a well or completing a shale play, time is money. That's why Weatherford Laboratories brings a suite of formation evaluation technologies right to the wellsite. Utilizing mud gas and cuttings, these technologies provide detailed data on gas composition, organic richness, mineralogy and chemostratigraphy in near real time. As a result, operators now have an invaluable tool to assist with sweet spot identification, wellbore positioning, completion design and hydraulic fracturing. We call it Science At the Wellsite. You'll call it money well spent.

SCIENCE AT THE WELLSITE™
www.weatherfordlabs.com

Formation Evaluation | Well Construction | Completion | Production

©2013 Weatherford. All rights reserved.



NON-PROFIT
ORGANIZATION
U.S. POSTAGE
PAID
PERMIT NO. 6476
HOUSTON, TX

**SOCIETY OF PETROLEUM ENGINEERS
GULF COAST SECTION**

10777 Westheimer Road
Suite 1075
Houston, TX 77042

CALENDAR

October 2013

| Sunday | Monday | Tuesday | Wednesday | Thursday | Friday | Saturday |
|--------|--------|--|--|--|--|----------|
| | | | | Research & Development | | |
| | | | 1 | 2 | 3 | 4 |
| | | Northside | Drilling | General Meeting Board Of Directors Mtg. | SkillsUSA District VIII Fall Leadership Conference | |
| 6 | 7 | 8 | 9 | Young Professionals | 10 | 11 |
| | | Permian Basin | Digital Energy Westside | International | | |
| 13 | 14 | 15 | 16 | 17 | 18 | 19 |
| | | | Projects Facilities & Construction | Reservoir | | |
| 20 | 21 | 22 | Completions & Production | 23 | 24 | 25 |
| | | RPSEA Ultra-Deepwater Technology Conference | Business Development RPSEA Ultra-Deepwater Technology Conference | | | |
| 27 | 28 | 29 | 30 | 31 | | |