




Gulf Coast Section

SEPTEMBER
2013

CONNECT

SPE GULF COAST SECTION NEWSLETTER



More Crude Talk Than George Carlin...

GENERAL MEETING P. 9

Higher Resolution Subsurface Imaging

RESEARCH & DEVELOPMENT P.23

BEHAVIOR-BASED SAFETY & REDUCING RISK TOLERANCE

HEALTH SAFETY & ENVIRONMENT P. 17

APP-RELEASE SOCIAL

YOUNG PROFESSIONALS P. 31

Shale Well Design

RESERVOIR P. 24

Then & Now

BUDDY WOODROOF
P. 6

SPEGCS.ORG



CHAIRMAN'S CORNER

MIKE STRATHMAN
2013-2014 SPE-GCS Chair

The Gulf Coast Section has been selected to receive two awards for outstanding achievement from the Society of Petroleum Engineers

- 2013 President's Award for Section Excellence
- Section Award for Outstanding YP Activity

Congratulations and thank you to all the leadership and members whose volunteer efforts made these awards possible. The formal presentations will be at the President's Luncheon at the SPE Annual Technology Conference and Exhibition, September 30th – October 2nd in New Orleans, LA. Be sure to sign up. I personally look forward to seeing you there.

The SPE-GCS is no stranger to technology. As an industry we embrace it, and as a section we try to leverage it. Our strong social media footprint includes:

- LINKEDIN GROUPS
 - SPE GULF COAST
 - SPE GCS YP (YOUNG PROFESSIONALS)
 - SPE GENERAL MEETING STUDY GROUP - GULF COAST SECTION
 - SPEGCS R&D STUDY GROUP
 - SPE GCS BUSINESS DEVELOPMENT
 - SPE UNIVERSITY OF HOUSTON AND RICE UNIVERSITY CHAPTER
- FACEBOOK – SPE GULF COAST, SPE GCS YP AND PETROBOWL
- TWITTER - @SPEYP AND @PETROBOWL
- GOOGLE+ - SPEGCS BUSINESS DEVELOPMENT



I welcome you to participate in the social media options that are relevant to your work and interests. We are interested in members' experiences and how we can leverage them more effectively. Please use the SPE Gulf Coast LinkedIn Group to submit your ideas to help improve SPE.

We are pleased to announce a new SPE-GCS YP Mobile App for your iPhone, iPad, Blackberry or Android device. It was officially released by SPE-GCS YP at Roughneck Camp this past July. You are welcome to download it for free at the App Store on your device. We would like to thank all of the Young Professionals for their initiative to create this App.

In particular, I would like to thank Sandeep Pedom, Rachel Phillips, Simeon Eburni, Riteja Dutta, Greg Smyth, and Chad Leong for all their hard work. Anadarko, Schlumberger, and Statoil also deserve special thanks for sponsoring this App. This Mobile App will enable better communication and engagement with the YP committee members while taking advantage of current

technology. For those of us who have passed YP status– we are still welcome to use it and enjoy the benefits.

Congratulations! The Texas A&M University Chapter has earned the Gold Standard designation for 2013 in recognition of its exceptional programs in technology dissemination, membership development, community and social outreach, and more. We are proud of their continued accomplishments.

We are pleased to announce the 30th Anniversary Society of Petroleum Engineers Gulf Coast Section Tennis Tournament which will be held on September 19th and 20th of 2013. Thanks to Bob Fu and all the organizers as well as the participants and sponsors—every one of you makes a difference. Please see the website for registration details. These social events are fun and support the section's mission.

I welcome your comments and ideas. Please contact me at mike-strathman@att.net

FEATURES

September 2013

STUDY GROUPS

RESEARCH & DEVELOPMENT
9/5/13

Higher Resolution Subsurface Imaging

P. 23

NORTHSIDE
9/10/13

*Eagle Ford Completions
Optimization Consortium*

P. 19

DRILLING
9/11/13

*Redefine the Operating Window; How
to Proactively Design for Mechanical
Wellbore Strengthening While Drilling
with Casing or Liner*

P. 15

GENERAL MEETING
9/12/13

More Crude Talk Than George Carlin...

P. 9

PERMIAN BASIN
9/17/13

*The Oil and Gas Renaissance of the Permian
Basin*

P. 21

WESTSIDE
9/18/13

*What Does Your Horizontal Well Look
Like on Video?*

P. 25

HEALTH SAFETY & ENVIRONMENT
9/24/13

*Behavior-Based Safety & Reducing Risk
Tolerance (How Not to Fail in Taking the
Big Step from Theory to Practice)*

P. 17

BUSINESS DEVELOPMENT
9/25/13

*Aurora's Recent Experiences as an Operator
in the Eagle Ford Oil/Condensate Window*

P. 11

COMPLETIONS & PRODUCTION
9/25/13

*Evaluation of Horizontal Wells in the
Eagle Ford Using Oil-Based Chemical
Tracer Technology*

P. 13

RESERVOIR
9/26/13

Shale Well Design

P. 24

COMMITTEES

YOUNG PROFESSIONALS
9/26/13

*The Path to Excellence: Intrinsic Motivation
at Work*

P. 30

YOUNG PROFESSIONALS
9/3/13

App-Release Social

COMMUNITY SERVICE

*Waltrip Robotics Competition SPE-GCS Spon-
sorship*

AUXILIARY

September 2013 Activities

P. 31

CAREER MANAGEMENT

Ethics Seminar

P. 32



30TH ANNUAL SPE-GCS
TENNIS TOURNAMENT

Thursday & Friday, September 19 - 20

IN EVERY ISSUE

SPE-GCS MEMBERSHIP REPORT
June 2013

VOLUNTEER SPOTLIGHT
Alex McCoy

P. 5

THEN & NOW
Buddy Woodroof

P. 6

SPE GULF COAST SECTION
DIRECTORY

P. 34

THU
September
12

7:30 AM TO 10:30 AM

BOARD OF DIRECTORS MEETING

LOCATION

*SPE Houston Office
10777 Westheimer Rd.
Suite 1075
Houston, TX 77042*

EVENT CONTACT

*Sharon Harris
713-457-6821 EXT. 821
713-779-4216 FAX
sharris@spe.org*



WE MAKE IT WORK RIGHT THE FIRST TIME

Deeper and deeper water. Larger projects.
More complex design challenges.
More people with highly specialized skills.
Fewer people who see the big picture.

GATE's full-service team takes a larger, systems view of the interactions and intricacies of the project as a whole. This enables us to develop solutions that cross many different disciplines and boundaries.

We make it work right the first time.

www.gateinc.com

GATE
GIBSON APPLIED TECHNOLOGY & ENGINEERING, INC.

You drop it in the wellbore, we catch it!

Introducing ...

OPEN HOLE NET™

Protects the wellbore from metal dropped into and coming out of the wellbore!



- Installs over any API standard size annular preventer.
- Roughnecks rig it up; no operator needed.
- No power source needed.
- Operates 24/7/365. Never rests.
- Complete stainless steel construction.
- M.A.D.E.™ (Made, Assembled, Designed, Engineered) in USA.

Patent Pending

Visit Us at SPE/ATCE 2013 Sept. 30-Oct. 2 Booth #3258



5D Oilfield Magnetics™

Premier Magnetic Applications in Drilling Completion and Production Operations
sales@5doilfieldmagnetics.com • 337.466.7400

www.5doilfieldmagnetics.com

MULTI-STAGE FRACTURING



“If you think it’s expensive to hire a professional... wait until you hire an amateur” - Red Adair



Our track record includes running over 11,650 open hole StackFRAC® ball drop systems accounting for over 146,200 fracture stages. Contact us today and let us help you maximize your assets.

DO IT ONCE. DO IT RIGHT.

Packers Plus®
www.packersplus.com

Slider

Automated Directional Drilling

IMPROVE YOUR HORIZONTALS

- ON-BOTTOM TOOL FACE ORIENTATION
- INCREASED MOTOR LIFE
- INCREASED ROP & HORIZONTAL REACH CAPABILITY
- ELIMINATES ORIENTATION TIME LOSSES

slb.com/Slider

Integrated Energy Services ,Inc.

Robert Barba
Petrophysicist

Log Analysis
Completion Optimization

500 N. Capital of TX Hwy
Building 4-150
Austin, TX 78746
C: (713) 823-8602
F: (713) 583-9400
RBarba75@gmail.com

www.integrated-energy-services.com

SPE-GCS MEMBERSHIP REPORT

July 2013

JULY 2013

Total: **15,052**

YP: **3,220**

JUNE 2013

Total: **14,792**

YP: **3,095**

SPE-GCS Members	JULY		JUNE	
	Total	YP	Total	YP
New Members	134	79	163	87
Transferred to Section	3	2	2	2
Unpaid	2,438	815	2,512	836

Student Members	JULY		JUNE	
	Paid	Unpaid	Paid	Unpaid
Texas A&M	609	227	594	234
UH/Rice	394	89	372	90
HCC	83	13	72	13
Total	1,086	329	1,038	337

Total Paid/Unpaid	JULY	JUNE
Total Paid/Unpaid	16,138 / 2,767	15,830 / 2,849
% Paid	85.4%	84.7%

VOLUNTEER SPOTLIGHT

Alex McCoy

OCCIDENTAL PETROLEUM



This month SPE-GCS would like to recognize the efforts of Alex McCoy, who serves on the Board of Directors as Director At Large and also serves as Chairman of the Westside Study Group. These are two very important volunteer positions, each with lots of responsibilities. But that's not all.

Alex has also taken it upon himself to investigate some bleeding-edge technologies for our Section. As Board liaison to the Business Development Study Group, he is looking into the legal ramifications of the study group having a blog, as many of the study group members are not SPE members, but landmen, accountants, lawyers, etc. Alex is working closely with the SPEI staff lawyer to make sure our Section is not legally liable for any material posted on that blog. Alex is also looking into having a season pass, of sorts, for registering online on our SPEGCS.org website for all of the Business Development Study Group monthly meetings at once. This could be rolled-out to other study groups in the future.

These new initiatives are the kind of thing that our SPE Section does that wins us the SPE President's Award at the SPE Annual Technical Conference & Exhibition year after year. And they happen because a volunteer says "I'll look into it and report to the Board." Alex is the Real McCoy!

Alexander McCoy is a Reservoir Engineering Consultant at Occidental Petroleum, where he has worked as a reservoir engineer for 32 years. He received his Bachelor's degree in Petroleum Engineering from University of Tulsa, and then earned a Master of Business, Accounting and Finance degree from the University of Texas at Austin.



Please renew
your SPE
membership
today at
spe.org/join

THEN & NOW

Column by
BUDDY WOODROOF

September 1973

West Germany's Deminex reports substantial natural gas production from a well 3 miles off the Nigerian coast, and exploration interest in offshore West Africa is ignited.

Saudi King Faisal reaffirms that if the U.S. continues its "complete support of Zionism against the Arabs," it will be difficult for his country to continue to supply oil to the U.S. (You "Boomers" can probably remember the long lines to get gasoline long about this time.)

Lo, the myriad uses of natural gas... Propane usage for tobacco drying and corn drying was beginning to wane due to the increasing price of natural gas (The next thing you know, we will be reinjecting natural gas into oil-bearing shale reservoirs.)

International drilling activity is beginning to siphon off domestic land rigs and, in the process, is crimping U.S. rig inventories.

U.S. active rig count - 1,259

September 1997

Sharply reduced exploration activity threatens to make Colombia an oil importer in the foreseeable future. Guerilla activity is at least partly to blame in areas such as the Piedmonte block where BP's exploration activities are in a near-paralysis mode.

Meanwhile, just to the northeast in Venezuela, PDVSA has linked its two largest refineries at Amuay and Cardon to create the world's largest refining center (Paraguana Refining Center) with a combined capacity of 940,000 bbl/day.

A U.S. judge denies Pennzoil's motion to block Union Pacific's \$4.2 billion takeover bid after UP voluntary submits six internal documents relating to its bid, and the drama continues.

As improvements in offshore rig markets continue, and with the number of rigs available for near-term work remaining close to zero, the active deepwater fleet is forecasted to double in the next 3 years, with 13 rigs currently being upgraded and 23 newbuilds or conversions on order.

Light sweet crude oil - \$19.40/bbl; Natural gas - \$2.73/MMbtu; U.S. active rig count - 1,012

September 2009

McMoRan Exploration sets intermediate casing at 23,500 ft in a proposed 28,000 ft ultradeep shelf prospect, which is targeting the Eocene Wilcox, Paleocene, and possibly Cretaceous Tuscaloosa.

Aegean Energy begins the second coalbed methane well phase of its drilling program in the Epsilon field off the coast of Greece, which will include drilling the deepest and longest well ever drilled there (Word has it that there was a wait list for rig hands interested in working on this project...they must all be history buffs.)

Composite Energy Ltd. in the UK installs the world's first downhole distributed acoustic optical-fiber monitoring system in a coalbed methane well in Scotland.

BP's Gulf of Mexico Lower Tertiary deepwater discovery named Tiber reaches a total depth of 35,055 ft and finds oil in multiple Lower Tertiary reservoirs.

Light sweet crude oil - \$70.91/bbl;
Natural gas - \$2.96/MMbtu; U.S. active rig count - 999

THE REST OF THE YARN

This month we continue our extended look at the life and times of oil magnate John D. Rockefeller.

As much a model for philanthropy as he was for greed, Rockefeller managed to give away a massive fortune. He worked closely with a strong team of advisors, conducting his philanthropy with intelligence and energy, always striving, as he himself wrote, to "give without weakening the moral backbone of the beneficiary."

His biggest contributions were to medical research and education. "When history passes its final verdict on John D. Rockefeller," wrote Winston Churchill, "it may well be that his endowment of research will be recognized as a milestone" in human progress.

Starting in 1889 and continuing through 1910, Rockefeller funded the creation of the University of Chicago, today one of the world's leading centers for higher education. What's more, his donations were instrumental in bringing America into the era of modern medical care;

for instance, in 1901, he founded the Rockefeller Institute for Medical Research, which has been highly influential in medicine and home to numerous Nobel Prize winners. In 1913, he set-up the Rockefeller Foundation, which has ranked among the world's top ten philanthropies.

He also felt an intense concern for African Americans, rare for a white businessman in those days, giving generously to black educational institutions, churches, and orphanages.

The Rockefeller family funded, or contributed enormously to, scores of additional projects, including the restoration of Colonial Williamsburg, the Museum of Modern Art in New York, the Council on Foreign Relations, acreage for a number of national parks, preservation of large stands of California redwoods, and Manhattan's splendid ecumenical Riverside Church.

Next month, we conclude our look back at the life and times of John D. Rockefeller.

Then & Now September

QUIZ

What operating company is credited with drilling the first oil well in history in a structure identified with a reflection seismograph?

Answers to May's Quiz

In 1876, Doctor Nikolaus Otto, a German scientist who was much impressed by previous conceptions of a four-stroke cycle internal combustion engine, successfully built and operated the first four-stroke cycle gas engine, which was fueled by coal gas.

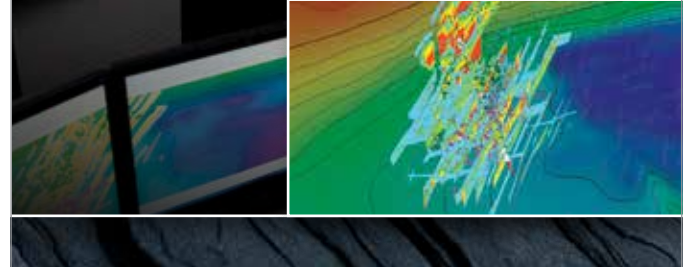
Congratulations to April's Winner

**JIM GLASS
ANADARKO PETROLEUM**

If you would like to participate in this month's quiz, e-mail your answer to contest@spe.org by noon, September 15th. The winner, who will be chosen randomly from all correct answers, will receive a \$50 gift card to a nice restaurant.

Mangrove

RESERVOIR-CENTRIC STIMULATION
DESIGN SOFTWARE



At last, a stimulation design software that can model the complexities of unconventional plays.

With Mangrove* software, you can integrate all your reservoir data into the Petrel* E&P software platform and get fast, accurate simulations in complex, unconventional reservoirs. Mangrove software links reservoir characterization, stimulation, and production, showing you how to complete and stimulate your well for maximum ROI.

Engineered staging and perforating designs helped PDC Mountaineer increase production more than 50%. "PDCM will not complete any lateral Marcellus wells without first running this service and evaluating the results." —Dewey Gerdom, CEO, PDC Mountaineer.

Find out more at
slb.com/Mangrove

Schlumberger

PATENTED
proNova™ by TDE

DRILLING PERFORMANCE

CREW PERFORMANCE MEASUREMENTS

AUTOMATIC OPERATIONS DETECTION

INVISIBLE LOST TIME DETECTION

281.755.7595
www.pronova-tde.com

Measured Solutions from
 The Completion Diagnostics Company

Annular Pack Quality?

With ProTechnics' memory gamma density imaging services you can directly measure:

- Annular Pack Quality
- Top of Annular Pack
- Production Allocation
- Long-Interval Pack Coverage
- Stage Production Contribution
- Horizontal Gravel-Pack Quality

PACKSCAN

ProTechnics
 COMPLETION DIAGNOSTICS
 a division of Core Laboratories

Learn more at www.corelab.com/protechnics or call us at 713-328-2320

WANT TO REACH OVER 15,000 SPE MEMBERS IN THE GREATER HOUSTON AREA?

Advertise your business in the SPE-GCS Newsletter

Connect is printed 12 times per year and contains premium positions for advertisers wanting to reach some of the most influential oil & gas professionals in the world. We are still selling ads for the 2013-2014 program year, and our ad sizes have been updated. Please visit the SPEGCS website for more information regarding ad pricing and specifications.

IF YOU'D LIKE TO PLACE AN AD IN THE SPE-GCS NEWSLETTER OR WEBSITE PLEASE CONTACT:

Pat Stone, Star-Lite Printing, Inc
 281-530-9711
starlite1@sbcglobal.net

Innovative Proppant Technology

OilPlus™
 PROPPANTS

New OilPlus™ Proppants Provide Enhanced Oil Recovery for Your Well.

E-mail us at oilfield@momentive.com. **MOMENTIVE**

New Version

MUDPRO

Drilling Mud Reporting Software

Pegasus Vertex, Inc.
 713-981-5558 | sales@pvsoftware.com | www.pvsoftware.com

More Crude Talk Than George Carlin...

The subject of Mr. Adkin's presentation will be his controversial outlook for 2014 oil and gas prices. Specifically, Mr. Adkins will detail why he thinks there is substantial downside risk to both global and U.S. oil prices in 2014. Likewise, he will discuss why U.S. natural gas prices are poised for a long-term improvement.

Marshal Adkins

Mr. Marshal Adkins is the Managing Director of the Energy Research team at Raymond James & Associates. He focuses on oilfield services, drilling and products.

He has won a number of honors for his energy analysis and stock-picking abilities including awards from: The Wall Street Journal's "All-Star Analyst Survey", Reuter's survey of analysts, and The Street.com.

Prior to joining Raymond James in 1995, he spent 10 years in the oilfield service industry as a project manager, corporate financial analyst, sales manager and engineer. Mr. Adkins began his career with B.J. Services before spending three years with an advanced oilfield technology firm. He holds a Bachelor of Science degree in Petroleum Engineering and an MBA from the University of Texas at Austin.



Event Info

SPEAKER

*Marshal Adkins
Manager Director
of the Research Team
Raymond James & Associates*

LOCATION

*Petroleum Club
800 Bell Street, 43rd floor
Houston, TX 77002*

EVENT CONTACT

*Barry Faulkner
281-627-8790
barryfaulkner@earthlink.net*

MEMBERS

\$35

NON-MEMBERS

\$40

EVENT UPDATE

RPSEA Onshore Production Conference

TECHNOLOGY TRANSFER

The RPSEA Onshore Production Conference is just around the corner and SPE-GCS members are invited to participate. RPSEA has an active research program with a current portfolio of projects all targeting technology that will benefit the onshore production community. This conference offers an ideal opportunity to hear the latest perspectives and exchange ideas with industry experts.

Attendees will learn the latest perspectives and benefits on what's being developed in:

- Water Treatment
- Improving Oil Production and Recovery
- Reducing Operating Costs

DATE

*September 25th
8:00 AM to 5:00 PM*

LOCATION

*Bureau of Economic Geology's
Houston Research Center
11611 West Little York Rd
Houston, TX 77041*

EVENT INFO

<http://rpsea.org>

EVENT CONTACT

*Greg Palmer
832-248-9067
greg.palmer@sas.com*

REGISTRATION

*Paid registration is required.
Visit <http://rpsea.org> to attend!*

ARE YOU FEELING THE EFFECTS OF THE **Great Crew Change?**

*Replenish
your company men
with competent
personnel...*

Signa's Wellsite Foreman Intern Training (WFIT) program does all the groundwork to provide operators with qualified company men. We screen, select and train optimal candidates, evaluating each of them throughout to ensure they're tailor-made for your company.

- Drilling or Completion
- Establish core skillsets
- Instill good habits
- Get quicker results
- Monitor progress



The WFIT program is a comprehensive 8-mo. training class utilized by large and small operators (As featured in *Offshore* magazine).

Signa Engineering Corp.
Houston, TX USA
www.signaengineering.com

Contact: Dave Roseland
281.774.1026
droseland@signa.net

Broaden your expertise.



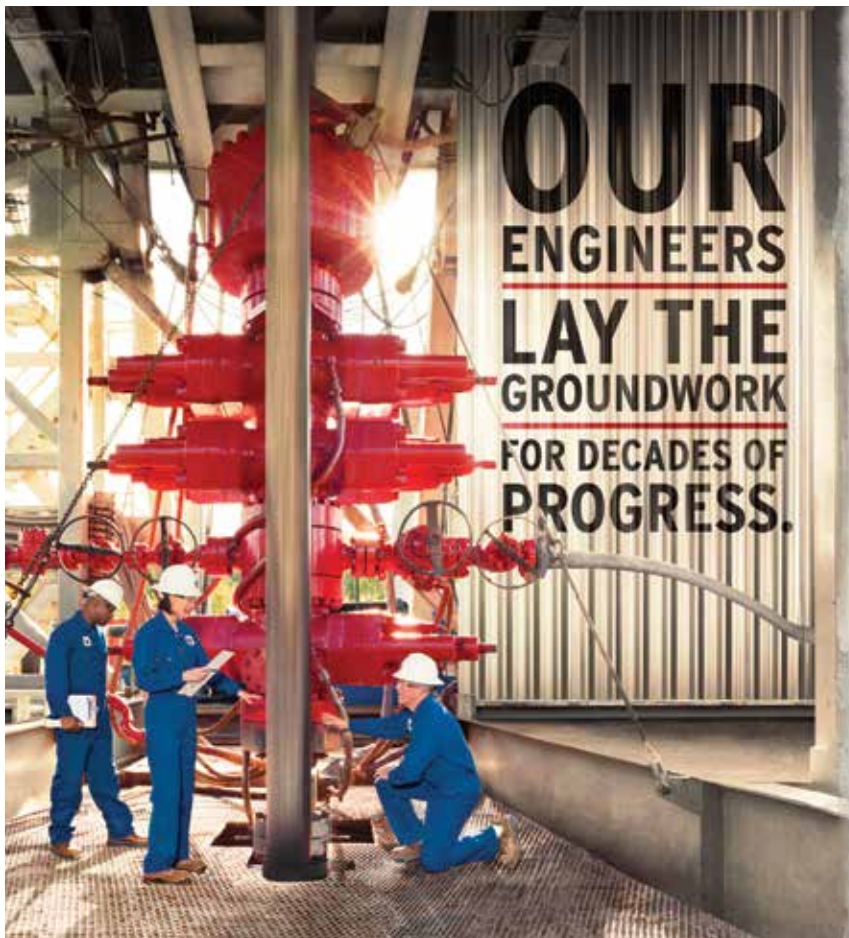
NExT oil and gas training and career development instructs more than 10,000 E&P professionals every year.

With hands-on mentoring and coaching, at a Schlumberger training facility or on the job, NExT training can help you expand your technical expertise.

To view our full list of courses, and to enroll, visit www.NExTtraining.net

Featured Course

Shale Play Production:
Exploiting Production Sweet Spots
October 7-10, 2013
Denver, Colorado, USA



At Chevron, you'll join a team with the technology to take on big challenges, the integrity to do it responsibly, and the drive to keep the world moving forward. If you're up to the job, visit chevron.com/careers

Chevron is seeking experienced petroleum engineers for production, reservoir, reservoir simulation, drilling and completions positions.

JOIN THE CHALLENGE.



An equal opportunity employer that values diversity and fosters a culture of inclusion. CHEVRON, the CHEVRON Halmark and HUMAN ENERGY are registered trademarks of Chevron Intellectual Property LLC. © 2013 Chevron U.S.A. Inc. All rights reserved.

WED
September 25

5:00 PM TO 7:00 PM

Aurora's Recent Experiences as an Operator in the Eagle Ford Oil/Condensate Window

Join us at the Four Seasons Hotel as Doug Brooks will update us on Aurora's experiences in the oil/condensate window of the Eagle Ford shale from both an operated and non-operated point of view. The popular format of a Business & Social Networking hour, with complimentary Hors D' Oeuvres and a cash bar, followed by an hour-long program, will begin at 5:00 PM in the Mezzanine.

The Karnes/Atascosa area of the Eagle Ford shale trend has been a hotbed of activity due to its high productivity and large liquid yields. Aurora Oil & Gas, a long time non-operator in the area, recently joined the ranks of Marathon and EOG with its first foray as the operator of its own wells. What were the key learnings that underpinned Aurora's recent decision to become an operator? Were there any unexpected issues to tackle? What are the unique challenges to having a position that straddles the oil/condensate boundary in the Eagle Ford? What are the additional opportunities provided by the adjacent Austin Chalk and Pearsall formations? What is Aurora's appraisal plan for testing the producibility of these secondary horizons over its position? What development synergies can be exploited between all three horizons? What are the midstream challenges and opportunities for a new operator in the area?

We welcome you to join us for this informative discussion, as well as the fellowship and networking of the popular Social Hour at 5:00 PM.

Doug Brooks

Doug Brooks is a senior oil and gas executive with an industry career spanning 30 years. His experience includes almost twenty-five years with Marathon Oil Co. serving most recently as Director of Upstream M&A and Business Development – Americas. Brooks left Marathon in 2006 and over the next six years founded two private equity-sponsored firms each focusing on unconventional resource projects in the western US. Most recently Brooks was Senior Vice

President of Business Development at U.S.-listed Forest Oil Corporation. Brooks is a board member for the Houston Producer's Forum and an advisor for Hart Energy's A&D Watch, a global energy research publication. He holds a Bachelor of Science in Business Management from the University of Wyoming - Casper and an MBA, Finance, from Our Lady of the Lake University in Texas. Brooks was appointed Chief Executive of Aurora in October 2012.



Event Info

SPEAKER

*Doug Brooks
Chief Executive Officer
Aurora Oil & Gas Ltd.*

LOCATION

*Four Seasons Hotel
1300 Lamar
Houston, TX 77010*

EVENT CONTACT

*Chris Atherton
832-654-6612
Chris.Atherton@energynet.com*

MEMBERS

\$40 in advance, \$50 at door

NON-MEMBERS

\$45 in advance, \$50 at door

FRAC or FICTION



FACT: No foreign proppant offers the security of supply and quality assurance that CARBO provides.

Why risk using any other proppant? For more than 30 years, CARBO Ceramics® has maintained the highest standards of quality from the mine to the wellsite. Don't put your multimillion dollar investment and future production at risk with marginal alternatives – trust CARBO to deliver superior, high-conductivity proppant to maximize asset performance.



Go online to test your knowledge
FracOrFiction.com

©2013 CARBO Ceramics, Inc.

VIKING ENGINEERING, L.C.
 CRITICAL WELL ENGINEERING CONSULTING SERVICES
 VIKING'S TEAM OF HIGHLY TRAINED PETROLEUM PROFESSIONALS LEND THEIR EXPERIENCE TO CREATIVE WELL DESIGNS.
 WE CAN HELP PLAN AND EXECUTE YOUR TOUGH WELLS.
 VISIT OUR WEBSITE: WWW.VIKINGENG.NET
 OR CALL: (281) 870-8455 IN HOUSTON

- PETROLEUM CONSULTING
- HPHT WELL DESIGN
- APB ANALYSIS
- PROJECT MANAGEMENT
- FAILURE ANALYSIS
- TRAINING

Rose & Associates
 Courses Consulting Software
 Improving E & P Effectiveness

Unconventional Resource Valuation Course (3 to 5 days)

UCRA Software
 To model, value and risk drilling in resource plays

lisaward@roseassoc.com

- New drilling and completion technologies
- Custom-engineered solutions
- Fit-for-purpose manufacturing
- Faster response.

www.tiwtools.com
 ENGINEERED TO FIT

TIW CORPORATION A Pearce Industries Company

281.955.2900
www.stress.com

Providing Engineered **Solutions**

STRESS ENGINEERING SERVICES INC.
 DESIGN • ANALYSIS • TESTING

Evaluation of Horizontal Wells in the Eagle Ford Using Oil-Based Chemical Tracer

Horizontal well positioning through a target formation can have a significant impact on overall productivity from an unconventional oil well. This presentation will present the evaluation of two horizontal wells completed in the oil section of the Eagle Ford Shale. These wells were completed using similar completion designs (hybrid frac design) with the method and number of frac stages determined by the geology, petrophysical, or geomechanical data.

The presentation will describe how conventional analysis technologies including completion, flowback, and production data were compared to the relative oil flow from each stage measured using a recently developed hydrocarbon tracer technology to provide critical information on optimal well path design for use during future well development.

The stage production data provided by the use of hydrocarbon-based tracers allows engineers to modify and improve their completion and stimulation programs. This presentation will highlight tracer response interpretations of the two wells presented and the current status of the hydrocarbon-based tracer technology for hydraulic fracturing applications.

Jon Spencer

Jon Spencer has 35 years of experience in the oil patch, 15 years with Halliburton as a wireline engineer performing open hole, cased hole and production logging services. He has spent the past 20 years with TRACERCO performing both upstream & downstream tracer projects. Currently as the Upstream Technical Advisor, he designs and analyzes the performance of tracer projects for both waterflood / gasflood interwell applications and for frac / stimulation applications.

Tracerco has performed a number of tracer-tagged frac projects from Texas to Alberta.

Event Info

SPEAKER

Jon Spencer
Upstream Technical Advisor
TRACERCO

LOCATION

Greenspoint Club
16925 Northchase Dr
Houston, Texas 77060

EVENT CONTACT

Jonathan Godwin
281-921-6526
jgodwin@carboceramics.com

MEMBERS

\$35 in advance, \$40 at door

NON-MEMBERS

\$40 in advance, \$40 at door

We're GROWING...

Introducing our Total Managed Displacement Services (TMDS™):

Our proprietary suite of wellbore cleanout tools, non-pollutant displacement chemicals, surface pit cleanout and fluids filtration services, and direct job validation.

Delivering the ultimate clean wellbore for maximizing completion success.



www.abrado-intl.com

Email us at: info@abrado-intl.com



Increase the reliability of your pipeline project with Flexpipe Systems' proven solutions

Flexpipe Systems' corrosion resistant linepipe products:

- Are available in 2", 3" and 4" ID
- Have rating pressures up to 2,000 psi
- Operate in temperatures up to 180°F (82°C)
- Come in spoolable or reel-less packaging

With over 55 million feet of linepipe and 80,000 fittings installed worldwide, we have the answers for your next pipeline challenge.

ShawCor - when you need to be sure



LUFKIN

Expect More

More **SYSTEMS**

More **SERVICES**

More **LOCATIONS**



Pump jacks with legendary quality and reliability have been the reputation of Lufkin for more than 100 years. In that same tradition, Lufkin now offers more artificial lift systems, more support services and more locations to serve operators around the world. These highly engineered solutions, supported by our experienced staff, deliver optimum production from your oil and gas wells.

Now, more systems and services to meet your requirements:

- Automation
- Beam Pumping Units
- Hydraulic Pumping Units
- Reciprocating Pumps
- Progressing Cavity Pumps
- Production Optimization
- Well Monitoring
- Secure Scada
- Plunger Lift
- Gas Lift
- Completion Products
- Maintenance & Repair
- Training

The Energy Flows Through Us®
LUFKIN.COM

Redefine the Operating Window; How to Proactively Design for Mechanical Wellbore Strengthening While Drilling with Casing or Liner

Casing while Drilling (drilling with casing or liner) is an enabling method that is believed to increase stability and fracture gradient in narrow pore-fracture pressure sedimentary basins and deep offshore applications (plastering effect). Although successful field applications of increasing wellbore integrity have been reported, uncertainties remain regarding the mechanisms and how to operationally capture the maximum attainable wellbore pressure. These uncertainties include the hydraulic complexities of fluids, role of Particle Size Distribution (PSD) and how it relates to the plastering effect, type of drilling fluids, borehole shape, role of lost circulation materials (LCM), variation of drilling parameters, and casing eccentricity. This presentation reviews newly found experimental and field data to explain these issues. It also provides a proactive plastering effect design solution to decrease the interference of several unknowns.

Moji Karimi

Moji Karimi is Weatherford's Drilling-with-Casing (DwC™) and -Liner (DwL™) Application Engineer. Prior to joining Weatherford, Mr. Karimi was the Casing-Drilling Research Engineer at TESCO. Mr. Karimi is considered a subject matter expert in wellbore-strengthening applications that use casing while drilling technology. He holds a Master of Science degree in Petroleum Engineering from University of Louisiana at Lafayette.



Event Info

SPEAKER

*Moji Karimi
Drilling-with-Casing (DwC™) &
-Liner (DwL™) Application Engineer
Weatherford*

LOCATION

*Greenspoint Club
16925 Northchase Dr.
Houston, Texas 77060*

EVENT CONTACT

*Joe Tison
832-368-1823
wtison@gtweed.com*

MEMBERS

\$35

NON-MEMBERS

\$40

PRODUCTIONER

USED BY EVERYONE,
FROM THE FIELD PUMPER
ALL THE WAY UP TO MANAGEMENT

What our customers are saying:
"Productioner is a great data repository
and analysis tool. Data entered in the field is
immediately available to corporate office."

- FEATURES**
- FIELD DATA CAPTURE
 - ALLOCATIONS
 - REPORTS & GRAPHS
 - CUSTOMIZABLE TEMPLATES
 - FULLY MANAGED SERVICE

Mi4 Corporation
Ph: (713) 401-9584
sales@productioner.com
www.productioner.com



24/7 SUPPORT HOTLINE (866) 421-6665

TAM SOLUTIONS

PROVEN, PREDICTABLE, PACKER PERFORMANCE



TAM PosiFrac™ Systems:

With PosiFrac™ you have an all-inclusive, multi-stage system for open-hole hydraulic fracture applications. And you have the experts to run it from service centers in your region. You'll get your completion on depth, on time, with the best swellable packers available. And that's as complete as it gets.



WELL INTERVENTION | DRILLING & COMPLETIONS | UNCONVENTIONAL RESOURCES | RESERVOIR OPTIMIZATION

www.tamintl.com

Directionally challenged?

If your directional drilling program is more challenging than you expected, maybe you need a new directional driller. Maybe you need Ryan Directional Services, Inc.

Ryan has experience in virtually every important oil and gas shale play. We know the potential roadblocks and how to address them before they cost you money. And that takes drilling to a new level of efficiency.

Call Ryan at 281.443.1414 and see how our directional drilling program will change your experience from challenging to rewarding.

www.nabors.com



VIBRATION TECHNOLOGY
LEADING THE INDUSTRY IN STUCK PIPE RECOVERY
INNOVATIVE TECHNOLOGY FOR REMOVING STUCK TUBULARS

- + WORKOVER
- + COMPLETIONS
- + DRILLING

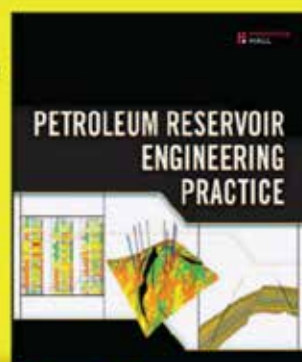


Vibration Technology

www.layne.com

The Up-To-Date,
Practical Guide to Modern
Petroleum Reservoir
Engineering by
DR. NNAEMEKA EZEKWE

Available from Amazon.com,
informIT.com, and other
fine resellers.



informIT.com

Behavior-Based Safety & Reducing Risk Tolerance (How Not to Fail in Taking the Big Step from Theory to Practice)

Many accidents can be attributed to unsafe behaviors linked to individuals (and teams) that have (in relative terms) a higher tolerance for taking unnecessary risk. Industry, and the safety profession, has recognized that reducing risk tolerance will lead to improved safe behaviors that inherently lead to a reduced number of accidents and subsequent injuries. This presentation is designed to help increase understanding of both the prevailing theories behind behavior-based safety and risk reduction, and the strategies necessary to increase an organization's chance of success when implementing behavior-based safety and risk reduction programs.

Jack Toellner

Mr. Toellner is a Senior Safety Consultant for ExxonMobil and is responsible for providing technical safety and leadership support to construction and management teams around the world. Mr. Toellner has been with ExxonMobil for 30+ years, and has professional and management experience in construction management, engineering and design, environmental affairs, and safety. He is both a registered Professional Engineer and a Certified Safety Professional. Mr. Toellner holds a Bachelor of Science degree in Civil Engineering from Texas A & M University, and a Masters of Public Health degree in Occupational Safety and Health Management from Tulane University.

Mr. Toellner's business and industry support activities have taken him to 25+ countries around the world, and he has received multiple awards and recognitions throughout his career for his contributions to improving the development and execution of environmental and safety programs.

Mr. Toellner will be representing the Center for Offshore Safety which has defined its mission as promoting the highest level of safety for offshore drilling, completions & operations by facilitating effective leadership, teamwork, utilization of disciplined management systems, and independent third-party auditing & certification.



Event Info

SPEAKER

Jack Toellner
Senior Safety Consultant
ExxonMobil Development Company

LOCATION

Petroleum Club
800 Bell Street, 43rd floor
Houston, TX 77002

EVENT CONTACT

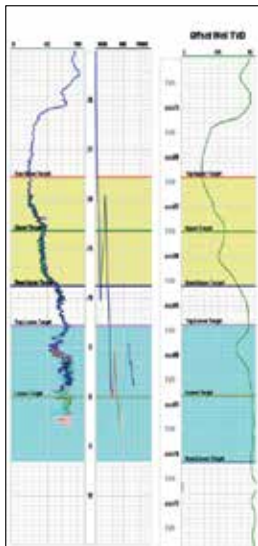
Trey Shaffer
trey.shaffer@erm.com
281-600-1016

MEMBERS

\$40

NON-MEMBERS

\$50



Geosteering Services

Highly qualified personnel with 20+ years DD & LWD experience

24/7 Real-time monitoring or reports from LAS files

Proprietary software

Geosteering Software

TST interpretation for GR only measurements

Image displays / interpretation of azimuthal GR, resistivity or density measurements

Resistivity modelling / interpretation for LWD propagation resistivity

Software sales, training and technical support

info@geosteering.com

Call 281 573 0500

advanced FRAC SCHOOL

October 21-25, 2013
Houston, TX

For More Information Visit:
www.fracschool.com
or call 832.833.2569

November 11-15, 2013
Houston, TX

FRAC SCHOOL

Measure Hydrocarbon Stage Production

...No tools, coiled tubing or wireline



Tracer technology to evaluate stimulation and well design:

- ◆ Measure actual oil and gas production per stage
- ◆ Results equivalent to 30+ days of production logging
- ◆ Diagnose fracture communications to offset wellbores
- ◆ Confirm toe flow to verify release of all plugs

Knowing what's going on at the bottom keeps you on top.

To learn more call or email:
Tel: 281 291 7769
Email: reservoir@tracerco.com
www.tracerco.com/reservoir-characterisation



TUE
September 10

11:30 AM TO 1:00 PM

Eagle Ford Completions Optimization Consortium

Four operators drilling in the Eagle Ford Shale Play located in South Texas joined in an initiative to acquire various types of open hole logging data in several horizontal wells, and then use the data to design the completions with optimum fracture stage and perforation cluster positioning. The wells were then evaluated with horizontal production logs to gauge the effectiveness of using the log data to engineer the completions. The idea was to test the theory that by grouping rock with similar properties it would be possible to improve the effectiveness of the hydraulic fracture treatments and consequently improve economic performance. Perforation efficiency was used as a metric to evaluate the success of this test. This presentation discusses the methodology and results of the consortium wells.

Andrew Acock

Andrew holds a Master's Degree in Petroleum Engineering from University of Texas and a BS in Engineering Science from Aberdeen University, Scotland. After joining Dowell Schlumberger in 1984 Andrew has worked in West Africa, UK and USA in numerous operational and technical roles. During the last 5 years he has been involved in Unconventional Resources working on integrated projects and technologies.



Event Info

SPEAKER

Andrew Acock
Unconventional Resources -
Business Development Manager
Schlumberger

LOCATION

Greenspoint Club
16925 Northcase Drive
Houston, Texas 77060

EVENT CONTACT

Matthew Strom
281-618-7848
Matthew_Strom@swn.com

MEMBERS

\$35

NON-MEMBERS

\$40

The Future of Water in Unconventional Oil and Gas



Water management is complex and rapidly evolving, creating both risks and opportunities for operators, service providers, and investors. Two new, definitive reports by the water and unconventional oil and gas experts from IHS and CAP Resources bring together current best field practices, actual detailed spending levels, cost data, market players, scenario drivers, and opportunity insights essential to improving strategies.

Two reports:

Water Management Strategies in the US
Water Market Opportunities in the US

For additional information:

Maria Bertram

1 781 301 9438

maria.bertram@ihs.com

ihs.com/waterunconventionals



DRILLING TOOLS

Meeting your exacting requirements.

Mud motors | Non-magnetic drill collars | Stabilizers | Subs



HUNTING

www.huntingplc.com

© 2013 Hunting



Drilling Surveillance and Geosteering in Real-Time!

Petrolink is uniquely vendor neutral allowing you to bring your data into your own environment. We provide true real-time interoperability between rig site contractors and your drilling and geoscience office teams to Make Better Decisions, Faster!

www.petrolink.com
sales@petrolink.com



PROFESSIONAL REGISTRATION REVIEW COURSES FOR PETROLEUM ENGINEERING

The Courses covers topics on the Texas State Board Petroleum Engineering Professional Examination.

HOUSTON COURSES 8:00 AM - 5:00 PM

I August 19 thru 23, 2013

II October 7 thru 11, 2013

For More Information: 405-822-6761

E Mail: bingwines@cox.net

winrockengineeringinc.com

WANT TO REACH OVER 15,000 SPE MEMBERS IN THE GREATER HOUSTON AREA?

Advertise your business in the SPE-GCS Newsletter

Connect is printed 12 times per year and contains premium positions for advertisers wanting to reach some of the most influential oil & gas professionals in the world. We are still selling ads for the 2013-2014 program year, and our ad sizes have been updated. Please visit the SPEGCS website for more information regarding ad pricing and specifications.

IF YOU'D LIKE TO PLACE AN AD IN THE SPE-GCS NEWSLETTER OR WEBSITE PLEASE CONTACT:

Pat Stone, Star-Lite Printing, Inc

281-530-9711

starlite1@sbcglobal.net

TUE
September 17

11:30 AM TO 1:00 PM

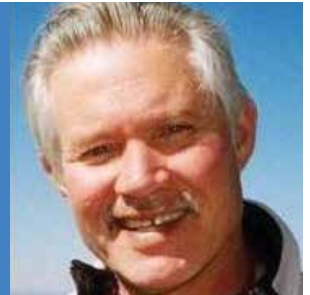
The Oil and Gas Renaissance of the Permian Basin

The Permian Basin of West Texas and Southeastern New Mexico is having a resurgence of oil and gas activity unlike that seen since the late 1970's and early 1980's. The high level of rig activity is being driven by the application of new technology. Specifically, horizontal drilling and hydraulic fracturing coupled with high oil prices have made previously uneconomic reservoirs more attractive drilling targets. This lunch-time presentation will give attendees an overview of the geographic location of the Permian Basin, the geology of the Permian Basin, and discuss the latest trends being developed by oil and gas operators. There will be an explanation of geologic principles, an explanation of horizontal drilling and hydraulic fracturing techniques and discussion of how the technology has impacted the development of new oil and gas plays. The presentation will conclude with a brief overview of water needs as it impacts the oil and gas industry and energy development in the semi-arid Permian Basin.

W. Hoxie Smith

Mr. Smith has over 30 years of experience in the energy industry. Since 2003, he has directed Midland College's Petroleum Professional Development Center, which provides continuing education for the regional Permian Basin energy industry. He is a past-Chairman of the Society of Petroleum Engineers-Permian Basin Section, and a Past-President of the Permian Basin Geophysical Society. Mr. Smith is a certified Professional Geologist licensed in the State of Texas, and a Petroleum Geologist certified by the American Association of Petroleum

Geologists (AAPG). He has managed or otherwise been involved with four major research projects funded by the U.S. Department of Energy. He is currently a Special Advisor for Summit Power Group, which is working to build the first Clean Coal Plant in America that captures over 90% of the CO₂ generated. Groundbreaking for the plant is scheduled in Penwell, Texas during the second half of 2013.



Event Info

SPEAKER

W. Hoxie Smith
Midland College PPDC

LOCATION

Norris Westchase Center
9990 Richmond Ave., Suite 102
Houston, Texas 77042

EVENT CONTACT

Amy Timmons
713-836-6563
Amy.Timmons@Weatherford.com

MEMBERS

\$35

NON-MEMBERS

\$40



PROCESS SOLUTIONS

MAXIMIZING PERFORMANCE THROUGH OPERATIONAL EXCELLENCE

- OPERATIONS ASSURANCE
- SUBSEA PRODUCTION REALIZATION
- FLOW ASSURANCE
- SEPARATION SYSTEMS
- GAS TREATMENT & TRANSPORT
- PRODUCED WATER MANAGEMENT
- SAND & SOLIDS MANAGEMENT
- CONTAMINANTS MANAGEMENT
- CHEMICAL MANAGEMENT
- PROCESS/PRODUCTION OPTIMIZATION
- PROCESS TROUBLESHOOTING
- OPERATIONS PERFORMANCE STRATEGY [OPS]



WE ARE DEDICATED TO DELIVERING STRATEGIC VALUE FOR OUR CLIENTS.

Our highly skilled technical team understand the changing and challenging needs of the oil and gas industry and the importance of objective, innovative and cost effective solutions.

contact@maxoilsolutions.com • www.maxoilsolutions.com
 ABERDEEN | LONDON | HOUSTON | STAVANGER | KUALA LUMPUR | PERTH

WANT TO REACH OVER 15,000 SPE MEMBERS IN THE GREATER HOUSTON AREA?

Advertise your business in the SPE-GCS Newsletter

Connect is printed 12 times per year and contains premium positions for advertisers wanting to reach some of the most influential oil & gas professionals in the world. We are still selling ads for the 2013-2014 program year, and our ad sizes have been updated. Please visit the SPEGCS website for more information regarding ad pricing and specifications.

IF YOU'D LIKE TO PLACE AN AD IN THE SPE-GCS NEWSLETTER OR WEBSITE PLEASE CONTACT:

Pat Stone, Star-Lite Printing, Inc
 281-530-9711
 starlite1@sbcglobal.net

Get More from your Core



With reservoirs becoming increasingly complex, you need the most accurate information you can get to better understand your reservoir.

Weatherford Labs helps you get more from your core by combining an unsurpassed global team of geoscientists, engineers, technicians and researchers with the industry's most comprehensive, integrated laboratory services worldwide. From core analysis, sorption, geochemistry and isotopic composition to detailed basin modeling and comprehensive data packages, we provide you with real reservoir rock and fluid information that hasn't been distilled by a simulator or iterated by software.

We call it "The Ground Truth™" – giving you the accurate answers you need for better reservoir understanding. You'll call it a better return on your reservoir investment. To learn more, contact TheGroundTruth@weatherfordlabs.com.



© 2013 Weatherford. All rights reserved. Incorporates proprietary and patented Weatherford technology.

DIRECTIONAL AND HORIZONTAL DRILLING SPECIALISTS



WWW.NOVADIRECTIONAL.COM

Technical Documentation Development and Management Consulting



Documentation help = more available engineering time

- Technical Writing**
 - + Develop content
 - + Multiple authors – consistent voice
 - + Formatting, grammar & readability
 - + Develop / edit graphics
- Management Consulting**
 - + Documentation & project management
 - + Procedures, processes & workflow
 - + RFPs, RFQs & contract management

- Quick turnaround
- On-demand resource
- Turnkey publication



Higher Resolution Subsurface Imaging

It is hard to read road signs if you have poor eyesight, which is why driver's licenses are issued with restrictions requiring that corrective lenses be worn. Likewise, it is hard to find and exploit subsurface resources if you can't clearly see your targets or monitor the movement of fluids in the reservoir. Engineers now have powerful tools to precisely model subsurface reservoir production behavior, but a precise answer is still wrong if derived from an inaccurate subsurface description. Selection of the right depositional model, facies distribution, and geostatistical analog depends on having the sharpest, most detailed and accurate image of the subsurface possible - the Grand Challenge of Higher Resolution Subsurface Imaging. Today, advances in seismic and gravity data acquisition, electromagnetics, signal processing and modeling powered by high-performance computing are at the forefront of improved reservoir imaging. In this talk, Jack will examine the challenges of getting higher resolution subsurface images of hydrocarbons and touch on emerging research trends and technologies aimed at delivering a more accurate reservoir picture.

Dr. Jack Neal

Jack E. Neal is Senior Technical Advisor at ExxonMobil Upstream Ventures. He is a member of the SPE R&D Committee and co-chaired the Imaging session of the 2011 SPE R&D Symposium from which this white paper grew. He has worked globally in research, exploration, development, and production assignments with Exxon and ExxonMobil since 1994. His current role at ExxonMobil is to pursue discovered resources, especially those that can be unlocked with advanced technical capabilities. He has published on geology and geophysical integration in many environments, including the current SEPM bestseller, *Concepts in Sedimentology and Paleontology #9, "Sequence Stratigraphy of Siliciclastic Systems: The ExxonMobil Methodology"*. Neal received a BS from the University of Tulsa and PhD from Rice University in Geology and Geophysics.

Event Info

SPEAKER

Dr. Jack Neal
Senior Technical Advisor
ExxonMobil

LOCATION

Norris Westchase Center
9990 Richmond Ave., Suite 102
Houston, Texas 77042

EVENT CONTACT

Skip Davis
281-359-8556
skdavis@technologyintermediaries.com

MEMBERS

\$35

NON-MEMBERS

\$40

Shale Well Design

This presentation reports on recent research findings that provide useful insights for well design. Specific topics will include fracture calibration analysis, microseismic images, hydraulic fracture treatment analysis, pressure dependent permeability, and fracture complexity, and how they relate to shale well design.

Christine Ehlig-Economides

Dr. Ehlig-Economides is currently full Professor of Petroleum Engineering at Texas A&M University in the Albert B. Stevens endowed chair. She founded the Center for Energy, Environment, and Transportation Innovation (CEETI), one of four research centers in the Crisman Institute. She was attracted to Texas A&M to develop research and education in energy engineering to enable the petroleum engineering department to grow and evolve to a broader energy scope. CEETI is currently pursuing research funded by the Texas Department of Transportation and a potential collaboration with the Oak Ridge National Laboratory. She has successfully introduced a freshman level energy course that was approved for the core curriculum as a natural science elective and an Energy Engineering Certificate program.

Dr. Ehlig-Economides worked for Schlumberger for 20 years in a global capacity. She has published more than 50 papers and has authored two patents, and has lectured or consulted in more than 30 countries. Dr. Ehlig-Economides is internationally recognized for expertise in reservoir engineering, pressure transient analysis,

integrated reservoir characterization, complex well design, and production enhancement.

She received her Ph.D. in Petroleum Engineering from Stanford University, her M.S. in Chemical Engineering from the University of Kansas and her B.A. in Math-Science from Rice University. She is also the recipient of Anthony F. Lucas Gold Medal (2010).

Her professional service includes: Executive Editor of the Society of Petroleum Engineers Formation Evaluation journal 1995-96; SPE Distinguished Lecture 1997-98; and numerous posts as chairman or member of SPE committees and task forces. She recently co-chaired a steering committee for the Middle East Colloquium in Petroleum Engineering Education, was the Program Chairperson for the 2006 SPE Annual Technical Conference and Exhibition, and is currently co-chairing an SPE Talent and Retention Workshop on Dual Career Couples in the petroleum industry. She is currently a member of the National Academy of Science Committee on America's Energy Future.

THU
September 26

11:30 AM TO 1:00 PM



Event Info

SPEAKER

*Christine Ehlig-Economides
Professor &
A.B. Stevens Endowed Chair*

LOCATION

*The Courtyard on St. James Place
1885 Saint James Place
Houston, TX 77056*

EVENT CONTACT

*Miles Palke
713-750-5490
miles_palke@ryderscott.com*

MEMBERS

\$35 in advance, \$45 at door

NON-MEMBERS

\$40 in advance, \$45 at door

What Does Your Horizontal Well Look Like on Video?

The purpose of this presentation is to provide an overview of a successful video logging project from which high quality video log images have been obtained in numerous horizontal, fracture-stimulated shale gas wells. The video logs have been used primarily to identify water entry points and to subsequently isolate the entry point from the remainder of the wellbore. While running these logs, various streaming video images have been captured showing multiphase wellbore fluid flow in toe-up and toe-down trajectories, scale deposition, sand accumulation, plug debris and other interesting images. The presentation will include the actual video log images captured along with selected results of subsequent water-shut-off procedures utilizing various techniques.

Kirk Osborne

Kirk Osborne is currently a Production Engineering Manager in the Fayetteville Shale Division of Southwestern Energy in Houston. He began his career as an Operations Engineer with Mobil Oil Corporation in 1986 and has over 27 years of diversified petroleum engineering experience, with both major and independent oil and gas companies. He has worked for Southwestern Energy since 2005, starting on the East Texas Asset Team as a Completion/Production Engineer and moving into the Fayetteville Shale Division Production Group in 2008. Kirk earned a BS honors degree in Petroleum Engineering from Texas A&M University in 1986 and has been a member of SPE since 1982.

Event Info

SPEAKER

*Kirk Osborne
Production Engineering Manager-
Fayetteville Shale Division
Southwestern Energy Company*

LOCATION

*Norris Westchase Center
9990 Richmond Ave., Suite 102
Houston, Texas 77042*

EVENT CONTACT

*Andrea Hersey
281-646-2805
andrea.hersey@momentive.com*

MEMBERS

\$35

NON-MEMBERS

\$40

THU/FRI
September
19/20

SPE-GCS 30TH Annual Tennis Tournament

THU 4:00 PM - FRI 8:00 PM

The 30th Annual Society of Petroleum Engineers Gulf Coast Section Tennis Tournament will be held on THURSDAY, September 19th & FRIDAY, September 20th at The Houston Racquet Club located at 10709 Memorial Drive in Houston, Texas. Proceeds from the tournament benefit the SPE-GCS Scholarship Fund. In combination with other section functions, there have been 20 new scholarships for incoming college freshman studying petroleum engineering, math and sciences, and 89 renewed scholarships which include sophomores, juniors and seniors for their continued education in petroleum engineering. More than \$3 million dollars in scholarships have been awarded since 1963 to students through this program.

In 2012, we had a very successful tournament with over 80 players participating. Registrations and sponsorships raised \$50,000 in revenue. After tournament expenses, net proceeds of over \$26,100 dollars were contributed to the SPE-GCS Scholarship Fund.

Sponsors are a welcome and an essential part of making this event a success. All sponsors will be recognized in the tournament program and on the sponsorship billboard that is exhibited throughout the tournament. Please see the Sponsor Form for sponsorship levels. In-kind donations for ditty bags and door prizes are also accepted.

On behalf of the entire 2013 SPE-GCS Tennis Committee, we look forward to seeing everyone for two fun-filled days of tennis!

QUESTIONS

Bob Fu
713-591-9808
bob.fu@bp.com

Suzanne del Rosario Davis
832-618-5282
sdelrosariodavis@lgc.com

START TIMES

Mixed Doubles
Begins Thursday
September 19th - 6:00 PM

Tournament Doubles
Begins Friday
September 20th - 9:00 AM

LOCATION

The Houston Racquet Club
10709 Memorial Drive
Houston, TX 77024
713-464-4811
houstonracquetclub.com

DEADLINE

September 13, 2013
Participation is limited and
entries will be accepted on
a first-come, first-served basis

30th Anniversary

EVENT INFORMATION

There will be two flighted round robin events:
Tournament Doubles – Friday, September 20th
Mixed Doubles – Thursday evening, September 19th

The tournament doubles event is open to men and women and is a combined bracket. Partners may be of the same gender or mixed.

The committee will assist players who do not have a partner for any event.

FLIGHTING

Championship – Advanced Players
A – Regular & Advanced Players
B – Intermediate Players
C – Non-regular Players & Beginners

The SPE-GCS Tennis Committee reserves the right to allocate players to a different flight if necessary. Please rank yourself on the honor system.

WHAT TO EXPECT

Lots of tennis, meeting old friends and making new ones. Door prizes, T-shirts, awards, meals and beverages.

Thursday – Light dinner
Friday – Breakfast, lunch and snacks
Hit & Grab – Friday after lunch
Award presentations, door prizes & heavy appetizers – late Friday afternoon ~ 4PM

RULES OF ENTRY

The event is open to members, nonmembers, guests, and friends of SPE. The only restriction is that tennis professionals are not allowed.

REGISTRATION

Thursday, September 19th - 4:00 - 6:00 PM
Friday, September 20th – 8:30 – 9:00 AM

IMPORTANT NOTICE

All paid participants must wear their "Name Tags" during this event to have access to the food and drinks

ENTRY FEE INFORMATION

\$125.00 Per person - Fee covers Tournament and Mixed Doubles for an individual player.
\$50.00 for those only playing Mixed Doubles.
\$25.00 – Spouse/Guest (Not Playing)
Fees are due with entry form.

PetroSkills®

Build Your Foundation

To maximize convenience, PetroSkills will deliver our most popular courses a few more times in Houston before the end of 2013



- **Basic Petroleum Engineering Practices – BE:**
Nov 18-22
- **Production Operations 1 – PO1:**
Dec 2-13
- **Applied Reservoir Engineering – RE:**
Nov 4-15, Dec 2-13
- **Completions and Workovers – CAW:**
Nov 11-15

For details on these or our other 250 sessions in the Gulf Coast, contact Patty Davis, (832) 426-1203 or patty.davis@petroskills.com, or see details and full selection at www.petroskills.com

Did you get your copy of our 2013-14 Training Guide? If not, sign up for free at www.petroskills.com/contact




ULTERRA™

When Every Run Counts™



www.ulterra.com +1 817 293 7555



PPI Mechanical Testing

Just northwest of Houston

ISO & API Testing - Connection Qualification
BSEE Testing

ppitech.net/testing (936) 931-0179

Intertek

Westport Technology Center

Providing Expertise in Reservoir Characterization and Optimization

Services include:

- PVT and Fluid Phase Behavior
- Routine and Special Core Analysis
- Enhanced Oil and Gas Recovery
- Geochemistry
- Petroleum Geology and Petrophysics
- Unconventional Reservoirs
- Drilling Fluids
- Flow Assurance
- Oilfield Corrosion
- Petroleum Microbiology

Intertek
Westport Technology Center
6700 Portwest Drive
Houston, Texas
713.479.8400
westportservices@intertek.com

www.intertek.com



Reaching Deeper

With the largest fleet of deep, high-pressure coiled tubing, coupled with basin-specific expertise

Going Further

To find solutions to our customers' wellsite challenges, safely and efficiently

That's the IPS Advantage



Integrated Production Services

www.ipsadvantage.com



Dyna-Drill

Manufacturers of Drilling Motor Components

- Mud Motor Power Sections (Sizes: 2 7/8" to 11 1/2")
- Matrix-3® Coated Bearings
- Coil Tubing Power Sections (Sizes: 1 11/16" to 3 3/4")
- Precision Machining

www.dyna-drill.com **Power That Lasts™**



Entry Form *Entry Deadline – Friday, September 13, 2013*

SPE-GCS EVENTS 30TH ANNUAL TENNIS TOURNAMENT

Name _____

Gender _____ Company _____

Address _____

City _____ State _____ Zip _____

Phone _____ Email _____

PLAYERS 1 ENTRY FORM PER PLAYER

Tournament Doubles _____ \$125 per person

Mixed Doubles Only _____ \$50 per person

Spouse/Guest/Speaker _____ \$25 per person

Your Rank: Championship A B C

Your T-Shirt Size: M L XL XXL

FRIDAY TOURNAMENT DOUBLES

Are you playing tournament doubles? Yes No

Partner's name: _____

(Partner must send in own entry form)

Partner's Rank: Championship A B C

Do you need a partner? Yes No

THURSDAY MIXED DOUBLES

Are you playing in mixed doubles? Yes No

(Additional \$50 if Mixed doubles partner is not playing in Tournament Doubles.

\$50 MIXED ONLY)

Partner's name: _____

(Partner must send in own entry form)

Partner's Rank: Championship A B C

METHOD OF PAYMENT

Payment: Check Visa MC AMEX DISC

Card Number _____ Expiration Date _____

(If paying with credit card please email entry to SPE-GCS Tennis c/o erin.chang@bp.com)

Name as it appears on card _____ Email Address _____

Name of sponsoring company *(If being sponsored)* _____

Amount Enclosed/Amount to Charge *(Make checks payable to SPE-GCS Tennis)* _____

SPONSORS

Sponsors are a welcome and essential part of making this event a success. In recognition of their support, sponsors will be identified with special signage and privileges. 100% of the net proceeds raised by the tournament will be applied toward scholarships for the Society of Petroleum Engineers Gulf Coast Section College Scholarship Fund. All sponsors will have their company name on the tournament sponsor board and recognized in the tournament program according to sponsorship levels. Levels of available sponsorships are listed in the table below along with the number of players your company is entitled to register as part of your sponsorship. Separate entry forms are required for each player.

- Platinum Sponsor** **\$5,000**
(Entitled to register 8 tournament players)
- Gold Sponsor** **\$2,500**
(Entitled to register 4 tournament players)
- Silver Sponsor** **\$1,500**
(Entitled to register 3 tournament players)
- Bronze Sponsor** **\$1,000**
(Entitled to register 2 tournament players)
- Court Sponsor** **\$500**
(Entitled to register 1 tournament player)

SPE-GCS also appreciates in-kind donations such as door prizes, gift certificates, ditty bag items, tennis balls, etc.

Mail form/check to:

SPE-GCS Tennis

c/o Erin Chang

200 Westlake Park Blvd, 775C

Houston, Texas 77079

If paying by credit card, forms may be e-mailed

To the SPE-GCS tennis treasurer at:

erin.chang@bp.com

THE PATH TO EXCELLENCE: INTRINSIC MOTIVATION AT WORK

“Excellence is never an accident. It is always the result of high intention, sincere effort, and intelligent execution; it represents the wise choice of many alternatives - choice, not chance, determines our destiny.” (Aristotle, 384-322 BC)

The starting point is Intrinsic Motivation, which comes from inside an individual rather than from any external source. To reach great achievement, optimal performance or a specific record of excellence, intrinsically motivated individuals adopt the Self-Management style. The energy required to self-manage effectively is sustained by four associated emotional rewards: Purpose (the desire to do what we do in the service of something larger than ourselves); Autonomy (the urge to direct our own lives); Competence (the desire to get better and better on something that matters); Progress (the bright feeling that our target is getting closer).

In presence of a pervasive environment of trust created by excellent leaders, these rewards become intense to sustain persistent engagement, and to inspire passion.

The last step is Deliberate Practice, a highly structured activity specifically aimed at improving performance. When we engage in personal mastery and deliberate practice, improving our performance over time becomes our personal choice, our goal and motivation, and a clear commitment to approach life as a creative work, rather than as a sequel of reactive responses to external solicitations.

GIOVANNI PACCALONI joined ENI-AGIP in 1971 and became an SPE member in 1986. Within SPE, Paccaloni has served as Chairperson of the Italian Section; SPE Director of the Europe and Africa Region; and Chairperson of the Forum Series Implementation Committee, the Forum Series Coordinating Committee and the 1992 Forum Series in Europe Steering Committee. He was the SPE Distinguished Lecturer (1988-89) who covered ‘Optimization of Matrix Stimulation Treatments’, was awarded SPE Distinguished Member (2000), and will receive the prestigious SPE Honorary Member Award at the next ATCE in New Orleans.

Giovanni served as the 2005 SPEI President. He is the inventor of both the first real-time Matrix Stimulation Method and the MAPDIR Stimulation Technique (winner of the AGIP-ENI Technological Development Award 1997). He has authored several technical papers, including articles published in the JPT and SPEPE. Paccaloni holds an MS degree in Industrial Chemistry from the University of Bologna. He retired from ENI in 2006.

THU
September 26

6:00 PM



SPEAKER

*Giovanni Paccaloni
Energy Consultant
Paccaloni Consulting International,
Milan, Italy*

LOCATION

*Petroleum Club
800 Bell Street, 43rd Floor
Houston, TX 77002*

CONTACT

*Anne Branson
713-435-9765
annebranson@chevron.com*

MEMBER

\$50

NON-MEMBER

\$60

APP-RELEASE SOCIAL

SPE-GCS Young Professionals has released its first-ever mobile app! The app is available in multiple mobile platforms and will help you stay up-to-date with upcoming YP events, view our photo gallery, network with your peers in the industry and much more!

We are celebrating the release of our app at Saint Arnold Brewery. Join us for a fun evening and learn more about the app and upcoming events for the year. Enjoy dinner and drinks sponsored by Baker Hughes! Special thanks to our app sponsors –Anadarko, Schlumberger and Statoil.

LOCATION

Saint Arnold Brewery
2000 Lyons Ave.
Houston, TX 77020

CONTACT

Brittany Niles
281-782-8194
Brittany.Niles@shell.com



COMMITTEE COMMUNITY SERVICES



WALTRIP ROBOTICS COMPETITION SPE-GCS SPONSORSHIP

This past summer SPE-GCS donated \$2000 to sponsor the Waltrip High School's Robotics Team (already first in Texas) to travel to competitions in Washington and Oklahoma. In the M.A.T.E (Marine Advanced Technology Education) Underwater ROV Competition in Washington, Waltrip earned the gROVer Award with their ROV named Rambot. In the International Botball Tournament in Oklahoma, Waltrip won first place in the Global Alliance matches. Mrs. Witherspoon and her nine students are highly recognized for their achievements in the field of robotics.

COMMITTEE AUXILIARY

SEPTEMBER 2013 ACTIVITIES

PROGRAM

The SPE Auxiliary will be honoring all past presidents and will welcome members from past years to renew old friendships and share memories of the Houston SPE Auxiliary.

DATE

Friday, September 12, 2013
11:00 AM

CONTACT

Evelyn Earlougher
281-419-1328
eearlougher@comcast.net

COST & LOCATION

TBD

Karen Mermis
281-290-8924
kermis80@gmail.com

ETHICS SEMINAR

Updates on Board rule changes within the last year, general updates on initiatives the Board is working on, information on enforcement statistics, and the engineering Code of Conduct will be discussed in this Ethics presentation.

RICK VALDES is an Investigator IV with the Compliance & Enforcement Department, Texas Board of Professional Engineers. He has over 22 years of experience as an investigator with the State of Texas; nine of those years with the Board. As an investigator, Rick ensures that the TPBE Act and Board Rules are followed and also investigates complaints that are received by the Board regarding violations of the Act and or Board Rules.

Rick has worked for the Travis County Sheriff's Department, and the Texas Department of Licensing and Regulation and while there, was the Program Manager of Professional Boxing for the State of Texas. Additionally, Rick was also the Supervising Investigator for the Texas Real Estate Commission before joining our team.

Rick has a Bachelor's Degree in Criminal Justice from Southwest Texas State University '86, San Marcos, Texas.

THU
September 26

11:30 AM TO 1:00 PM

SPEAKER

*Rick Valdes
Investigator IV
Texas Board of Professional
Engineers*

LOCATION

SPE Gulf Coast Office

CONTACT

*Patty Davis
pdavis@petroskills.com*

MEMBER PRICE

\$ 40

PHDWIN™

Integrated Economics & Decline Curve Analysis

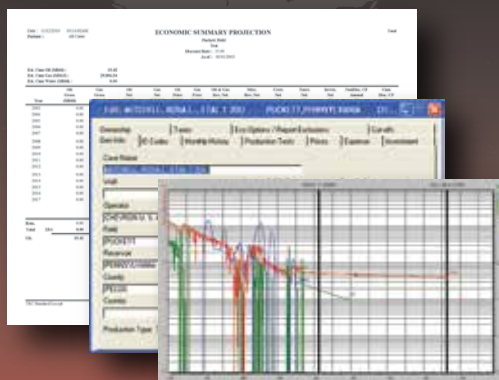
NOW EVEN MORE POWERFUL WITH

PHDRMS™

Reserves Management System

The *complete solution* for evaluating, managing, and reporting reserves and performance data.

Schedule an **online**
presentation
TODAY!



TRC Consultants, LC 888-248-8062 www.phdwin.com

EVENT RECAP

Thank you to the Young Professionals for providing photos from their 2013 Roughneck Camp. We'd like to feature more photos from our section events and luncheons in the Connect. If your committee or study group has photos from your recent events, luncheons, dinners or conferences, please send the original, high resolution file to the Connect editor at editor@spegcs.org.



SPE GULF COAST SECTION DIRECTORY

Your guide to your organization leaders

Officers

CHAIR

Mike Strathman, The Trinity Group, Inc.
713-614-6227
mike-strathman@att.net

VICE-CHAIR

Jeanne Perdue, Occidental Oil and Gas
713-215-7348
jeanne_perdue@oxy.com

SECRETARY

David Flores, Consultant
713-528-1881
david_p_flores@yahoo.com

TREASURER

Robert Bruant, Jr., BP America, Inc.
281-366-2157
Robert.Bruant@bp.com

VICE TREASURER

Lucy King, Miller and Lents, Ltd.
713-308-0343
lking@millerandlents.com

CAREER MANAGEMENT

Patty Davis, PetroSkills
832-426-1203
Patty.Davis@petroskills.com

COMMUNICATIONS

Valerie Martone, Anadarko
832-636-3196
Valerie.Martone@anadarko.com

COMMUNITY SERVICES

Amy Timmons, Weatherford
713-836-6563
amy.timmons@weatherford.com

EDUCATION

Gabrielle Guerre, Ryder Scott
713-750-5491
gabrielle_guerre@ryderscott.com

MEMBERSHIP

Xuan (Sun) VandeBerg Harris, Consultant
832-444-5143
xuan.harris@gmail.com

PAST CHAIR

Steve Baumgartner, Marathon Oil Corp.
713-296-3190
sbaumgartner@marathonoil.com

PROGRAMS

David Tumino, Murphy Oil Corp.
281-717-5123
tuminospe@hal-pc.org

SOCIAL ACTIVITIES

Jim Sheridan, Baker Hughes
281-432-9202
jim.sheridan@bakerhughes.com

TECHNOLOGY TRANSFER

Carol Piovesan, APO Offshore
281-282-9291
cpiovesan@apooffshore.com

YOUNG PROFESSIONALS

Simeon Eburi, Chevron
simeon.eburi@chevron.com
806-544-0829

DIRECTOR 2012-14

Alex McCoy, Occidental Oil and Gas
713-366-5653
alexander_mccoy@oxy.com

Kevin Renfro, Anadarko

832-636-8613
kevin.renfro@anadarko.com

Wolfgang Deeg, Shell

281-544-8279
wjdeeg@spemail.org

DIRECTOR 2013-15

Trey Shaffer, ERM
281-600-1016
Trey.Shaffer@erm.com

John Lee, UH

713-743-4877
wjlee3@uh.edu

Deepak Gala, Shell

281-544-2181
deepak.gala@shell.com

SPE GULF COAST NORTH AMERICA REGIONAL DIRECTOR

Bryant Muller, Halliburton
281-818-5522
Bryant.Mueller@halliburton.com

Committee Chairs

AWARDS

James Rodgerson, BP
281-221-4085
james.rodgerson@bp.com

CONTINUING EDUCATION

Dorian Hicks, Rice University
713-444-3230
dth1@rice.edu

ESP WORKSHOP

Noel Putscher, Newfield
281-674-2871
nputscher@newfield.com

GOLF

Cameron Conway, Cactus Pipe
281-217-0660
cconway@cactuspipe.com

INTERNSHIPS

Gabrielle Guerre, Ryder Scott
713-750-5491
gabrielle_guerre@ryderscott.com

NEWSLETTER

John Jackson, CCR Technologies
713-998-3121
editor@spgcs.org

SCHOLARSHIP

Tanhee Galindo, BASF
713-428-4919
tanhee.galindo@basf.com

SPORTING CLAYS

Paul Conover, NOV
713-346-7482
paul.conover@natoil.com

TENNIS

Bob Fu, BP
713-591-9808
bob.fu@bp.com

WEB TECHNOLOGY

Shivkumar Patil, Aker Solutions
713-369-5352
Shivkumar.Patil@akersolutions.com

SECTION MANAGER

Kathy MacLennan, SPE-GCS
713-779-9595 x 813
kmacclennan@spe.org

Study Group Chairs

BUSINESS DEVELOPMENT

Steve Mullican, Grenadier Energy Partners
281-907-4120
smullican@grenadierenergy.com

COMPLETIONS & PRODUCTION

Mark Chapman, CARBO Ceramics
281-921-6522
mark.chapman@carboceramics.com

DIGITAL ENERGY

Rick Morneau
281-315-9395
Rick@MorneauConsulting.com

DRILLING

Joe Tison, Greene Tweed
281-784-7805
wtison@gtweed.com

GENERAL MEETING

Raja Chakraborty, Shell
281-544-2148
Raja.Chakraborty@shell.com

HEALTH, SAFETY, SECURITY, ENVIRONMENT AND SOCIAL RESPONSIBILITY

Trey Shaffer, ERM
281-600-1016
trey.shaffer@erm.com

INTERNATIONAL

Michael Cherif, ExxonMobil
713-656-7303
michael.h.cherif@exxonmobil.com

NORTHSIDE

Naval Goel
650-307-7267
navalgoel@hotmail.com

PERMIAN BASIN

Amy Timmons, Weatherford
713-836-6563
amy.timmons@weatherford.com

PETRO-TECH

Marci Nickerson, Consultant
713-446-3400
mnick52@sbcglobal.net

PROJECTS, FACILITIES, CONSTR.

Bill Kinney, Wood Group Kenny
281-646-4198
william.kinney@woodgroupkenny.com

RESEARCH & DEVELOPMENT

Skip Davis, Technology Intermediaries
281-359-8556
skdavis@technologyintermediaries.com

RESERVOIR

Jose Villa, Shell
281-544-2612
j.villa@shell.com

WATER & WASTE MANAGEMENT

Kayli Clements, Schlumberger
281-561-1446
kclements@slb.com

WESTSIDE

Alex McCoy, Occidental Oil & Gas
713-366-5653
alexander_mccoy@oxy.com

CONNECT

Information

Newsletter Committee

CHAIRMAN | John Jackson
editor@spegs.org

AD SALES | Pat Stone
starlite1@sbcglobal.net

BOARD LIAISON | Valerie Martone

EDITOR/DESIGN | Deuce Creative
deucecreative.com

SPE Houston Office

GULF COAST SECTION MANAGER

Kathy MacLennan | kmaclellan@spe.org

GCS ADMINISTRATIVE ASSISTANT

Sharon Harris | sharris@spe.org

HOURS & LOCATION

10777 Westheimer Road, Suite 1075

Houston, Texas 77042

P 713-779-9595

F 713-779-4216

Monday - Friday 8:30 a.m. to 5:00 p.m.

Photo Submissions

We are looking for member photos to feature on the cover of upcoming issues! Photos must be at least 9" by 12" at 300 DPI. Email your high resolution picture submissions to:
editor@spegs.org

Change of Address

To report a change of address contact:
Society of Petroleum Engineers
Member Services Dept.
P.O. Box 833836
Richardson, Texas 75083-3836
1.800.456.6863
service@spe.org

Contact

For comments, contributions, or delivery problems, contact editor@spegs.org.

ADVERTISE IN THIS NEWSLETTER OR ON THE SPE-GCS WEBSITE

Connect is printed 12 times per year and contains premium positions for advertisers wanting to reach some of the most influential oil & gas professionals in the world. We are still selling ads for the 2013-2014 program year, and our ad sizes have been updated. Please visit the SPEGCS website for more information regarding ad pricing and specifications.

FOR INFORMATION ON ADVERTISING IN THIS NEWSLETTER OR ON THE SPE-GCS WEBSITE, PLEASE CONTACT:

Pat Stone, Star-Lite Printing, Inc
281-530-9711
starlite1@sbcglobal.net



NON-PROFIT
ORGANIZATION
U.S. POSTAGE
PAID
PERMIT NO. 6476
HOUSTON, TX

SOCIETY OF PETROLEUM ENGINEERS
GULF COAST SECTION

10777 Westheimer Road
Suite 1075
Houston, TX 77042

Engineering consulting and training services to maximize the value of your investment in flow assurance

SPT Group has one of the world's leading dedicated flow assurance consulting teams working with multiphase flow technology in wells and pipelines.

Every day we work with the world's leading energy corporations and oil and gas service companies to locally deliver specialist consulting and training services through our global offices and training facilities.

To learn more about the value we offer please visit www.sptgroup.com

SPT GROUP
A Schlumberger Company

CALENDAR

September 2013

Sunday	Monday	Tuesday	Wednesday	Thursday	Friday	Saturday
		<i>Young Professionals</i>		<i>Research & Development</i>		
1	2	3	4	5	6	7
		<i>Northside</i>	<i>Drilling</i>	<i>General Meeting</i>		
8	9	10	11	<i>Auxiliary</i>	12	13
		<i>Permian Basin</i>	<i>Westside</i>	<i>Board Of Directors Mtg.</i>	<i>Tennis Tournament</i>	<i>Tennis Tournament</i>
15	16	17	18	19	20	21
		<i>HSSE-SR</i>	<i>Business Development</i>	<i>Reservoir</i>		
22	23	24	<i>Completions & Production</i>	<i>Career Management</i>	26	27
			<i>RPSEA Onshore Production Conf.</i>	<i>Young Professionals</i>		28
29	30					