



Gulf Coast Section

AUGUST  
2013

# CONNECT

SPE GULF COAST SECTION NEWSLETTER

## Deepwater Symposium & Exhibition

P. 17

Evaluation of Horizontal  
Wells in the Eagle  
Ford Using Oil-based  
Chemical Tracer  
Technology

COMPLETIONS & PRODUCTION P. 11

2013-2014 SPE GULF  
COAST SECTION  
KICK-OFF MEETING

P. 7

SPE International

APPLICATION OF THE  
PETROLEUM RESOURCES  
MANAGEMENT SYSTEM

P. 21/23

SPEGCS.ORG



# CHAIRMAN'S CORNER

MIKE STRATHMAN  
2013-2014 SPE-GCS Chair

Welcome members, to the Society of Petroleum Engineers 2013-2014 Board Year. As many of you know the SPE-GCS fiscal year runs from August through July. This month marks the transition to a new board, and I personally invite you to the Kick-off Event on August 16th, 2013 at the Hilton Houston Westchase. This event is an excellent opportunity to network with other industry professionals and see how you can become involved. The event is free to attendees who register at [www.spegcs.org](http://www.spegcs.org).

The new year brings many new Board Members. We appreciate the diversity of skill and leadership that they bring. Please welcome the following members in their new roles.

- CAREER MANAGEMENT: PATTY DAVIS (PETROSKILLS)
- COMMUNITY SERVICES: AMY TIMMONS (WEATHERFORD)
- MEMBERSHIP: XUAN VANDEBERG HARRIS (FLUMEN MONTIS)
- SOCIAL ACTIVITIES: JIM SHERIDAN (BAKER HUGHES)
- TECHNOLOGY TRANSFER: CAROL PIOVESAN (APO OFFSHORE)
- YOUNG PROFESSIONALS: SIMEON EBURI (CHEVRON)
- DIRECTOR AT LARGE: DEEPAK GALA (SHELL E&P)
- DIRECTOR AT LARGE: DR. JOHN LEE (UNIVERSITY OF HOUSTON)
- DIRECTOR AT LARGE: TREY SHAFFER (ENVIRONMENTAL RESOURCES MANAGEMENT)

The annual report was highlighted in the July *Connect* newsletter. If you have not read it, please take a few minutes to see the many interesting and exciting things that have taken place.

This past year was a success due to the involvement of many people. One of the key accomplishments in 2012-2013, was the launch of the *Connect* newsletter for the Gulf Coast Section. Kim Pinyopusarerk (formerly Tran) has been the editor for the launch of this new format. It has received rave reviews, and we thank her for her wonderful contribution to the newsletter. Kim is moving on to other activities and John Jackson will take her place as the new editor. Although he has big shoes to fill, he is up to the task after co-chairing the YP Roughneck Camp and other leadership activities in the YP group. Thanks, John. Valerie Martone also deserves a big mention as she guided this process and the rollout of the new SPE-GCS website.

The SPE Gulf Coast Section has nearly 16,000 members and is growing. We appreciate the efforts of all our members and

encourage your participation. On a professional level there are many Study Groups and Committee events to attend – these support collaboration and sharing of knowledge. We also support SPE Student Chapters at Texas A&M, Rice, U of H, and Houston Community College with scholarship opportunities for engineering candidates. Through our community services outreach we support local schools, and in particular, programs that encourage science, technology, engineering and math skills (STEM). Socially, we hold an annual golf tournament, tennis tournament, sporting clays and networking events. Extend yourself, improve your community and have fun within the SPE Gulf Coast Section!

We welcome your participation and leadership as the industry benefits from the collaborative efforts. Personally, I welcome your comments and ideas. Please feel free to contact me at [mike-strathman@att.net](mailto:mike-strathman@att.net)

Thank you for your continual support and contribution to SPE-GCS; we look forward to another amazing year...

# FEATURES

August 2013



P. 7

2013-2014  
SPE GULF COAST SECTION  
KICK-OFF MEETING



P. 13/15

30TH ANNUAL SPE-GCS  
TENNIS TOURNAMENT  
*Thursday & Friday, September 19 - 20*



P. 17

DEEPWATER SYMPOSIUM  
AND EXHIBITION  
*SPE - Delta Section*

## STUDY GROUPS

BUSINESS DEVELOPMENT  
*2013-14 Social Kickoff with the  
Young Professionals Committee*

P. 9

COMPLETIONS & PRODUCTION  
*Evaluation of Horizontal Wells in the  
Eagle Ford Using Oil-based Chemical  
Tracer Technology*

P. 11

## MORE

RPSEA ONSHORE  
PRODUCTION CONFERENCE  
*SPE-GCS - Technology Transfer*

P. 19

SPE INTERNATIONAL  
*Application of the Petroleum Resources  
Management System (PRMS)*

P. 21/23

## IN EVERY ISSUE

SPE-GCS MEMBERSHIP REPORT  
*June 2013*

VOLUNTEER SPOTLIGHT  
*Elizabeth DeStephens, P.E.*

P. 5

SPE GULF COAST SECTION  
DIRECTORY

P. 26

THU  
*August* 8

7:30 AM TO 10:30 AM

## BOARD OF DIRECTORS MEETING

LOCATION  
*SPE Houston Office  
10777 Westheimer Rd.  
Suite 1075  
Houston, TX 77042*

EVENT CONTACT  
*Sharon Harris  
713-457-6821 EXT. 821  
713-779-4216 FAX  
sharris@spe.org*

**WE MAKE IT WORK RIGHT THE FIRST TIME**

Deeper and deeper water. Larger projects.  
More complex design challenges.  
More people with highly specialized skills.  
Fewer people who see the big picture.

GATE's full-service team takes a larger, systems view of the interactions and intricacies of the project as a whole. This enables us to develop solutions that cross many different disciplines and boundaries.

We make it work right the first time.

[www.gateinc.com](http://www.gateinc.com)

**GATE**  
GIBSON APPLIED TECHNOLOGY & ENGINEERING, INC.

**You drop it in the wellbore, we catch it!**

Introducing ...

# OPEN HOLE NET™

Protects the wellbore from metal dropped into and coming out of the wellbore!

- Installs over any API standard size annular preventer.
- Roughnecks rig it up; no operator needed.
- No power source needed.
- Operates 24/7/365. Never rests.
- Complete stainless steel construction.
- M.A.D.E.™ (Made, Assembled, Designed, Engineered) in USA.

Patent Pending

Standard Drop Test Set

**5D Oilfield Magnetics™**

Premier Magnetic Applications in Drilling Completion and Production Operations  
sales@5doilfieldmagnetics.com • 337.466.7400

[www.5doilfieldmagnetics.com](http://www.5doilfieldmagnetics.com)

MULTI-STAGE FRACTURING

**Not all ball-drop systems are created equal.**

Our QA/QC process provides 100% traceability with 2D barcodes ensuring that every system is tracked from raw steel to on-site delivery. Contact us today and let us help you maximize your assets.

**DO IT ONCE. DO IT RIGHT.**

**Packers Plus®**  
[www.packersplus.com](http://www.packersplus.com)

# Slider

Automated Directional Drilling

## IMPROVE YOUR HORIZONTALS

- ON-BOTTOM TOOL FACE ORIENTATION
- INCREASED MOTOR LIFE
- INCREASED ROP & HORIZONTAL REACH CAPABILITY
- ELIMINATES ORIENTATION TIME LOSSES

[slb.com/Slider](http://slb.com/Slider)

**ULTERRA™**

When Every Run Counts™

[www.ulterra.com](http://www.ulterra.com) +1 817 293 7555

# SPE-GCS MEMBERSHIP REPORT

June 2013

**JUNE 2013**

Total: 14,792

YP: 3,095

**MAY 2013**

Total: 14,391

YP: 2,930

	JUNE		MAY	
	Total	YP	Total	YP
<b>SPE-GCS Members</b>				
New Members	163	87	232	94
Transferred to Section	2	2	13	5
Transferred out of Section	N/A	N/A	N/A	N/A
Unpaid	2,512	836	2,670	870
<b>Student Members</b>				
Texas A&M	594	234	541	246
UH/Rice	372	90	310	96
HCC	72	13	47	13
Total	1,038	337	898	355
Total Paid/Unpaid	15,830	2,849	15,289	3,025
% Paid	84.7%		83.5%	



## VOLUNTEER SPOTLIGHT

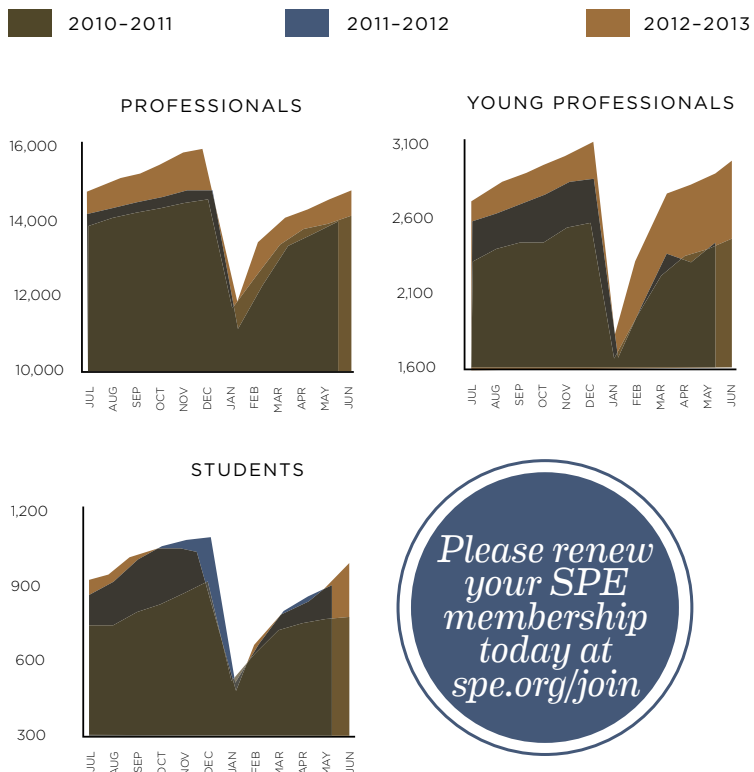
*Elizabeth DeStephens, P.E.*

This month SPE-GCS wishes to recognize Elizabeth DeStephens, treasurer of the Reservoir Study Group and Chairman of the SPE U.S. Engineering Registration Subcommittee. Elizabeth is also liaison to the NCEES Examinations for Professional Engineers Committee and has served on several SPE conference program committees.

Elizabeth secured complimentary seats for 35 Texas A&M and University of Houston students attending the annual full-day Reservoir Engineering Technology Forum. For her service to SPE, she received the Regional Young Member Outstanding Service Award at our Awards Banquet in May.

Elizabeth works in business development at Occidental Petroleum as A&D Engineering Advisor, focusing on upstream acquisition and joint venture opportunities in North America. Before joining Oxy, she served as Vice President of Engineering for A&D at Raymond James & Associates, Senior Reservoir Engineer at Ryder Scott, and Senior Engineer at ExxonMobil. Elizabeth has a BS in Materials Engineering from the University of Florida and a Master of Engineering in Petroleum Engineering from the University of Houston. She remains active at the University of Florida through her service on the Department of Materials Engineering Advisory Council and the Alumni Association Young Alumni Advisory Council. Elizabeth is a registered Professional Engineer in the state of Texas.

When she is not working, Elizabeth serves on the Board of Directors for Classroom Champions, a non-profit agency that pairs Olympian and Paralympian (disabled) athletes with needy students in the U.S., Canada, and Costa Rica, many of whom have succumbed to the idea that a bleak future has already been pre-determined for them. The program provides hope and inspiration to these children. Athlete mentors teach about the hard work of training, goal setting, competition, and perseverance, and classrooms incorporate teachings into their curricula. Using video lessons and live chats, students are engaged with their athlete mentor several times per month.



Please renew  
your SPE  
membership  
today at  
[spe.org/join](http://spe.org/join)

How do we ensure that every Weatherford mudlogger performs at the same high standards around the globe?

They all have to get past our man Wayland.



**EXCELLENCE  
FROM THE  
GROUND UP™**

Weatherford is passionate about training, and that's where Wayland comes in. His mudlogging training program begins with hands-on classroom instruction and ends with rigorous tests at the wellsite. We call it Competency-Based Training. With courses for basic and advanced mudlogging, Wayland's program helps mitigate hazards and enhance data accuracy. It's just one more way Weatherford Mudlogging is committed to Excellence from the Ground Up.

**SURFACE LOGGING SYSTEMS**

[www.weatherford.com/surfacelogging](http://www.weatherford.com/surfacelogging)  
[mudlogging.services@weatherford.com](mailto:mudlogging.services@weatherford.com)



**SEE THE ENERGY  
WITH TGS' DATA INTEGRATION SOLUTION**

See and access all of your G&G data with Volant, TGS' geoscience data and application integration solution.

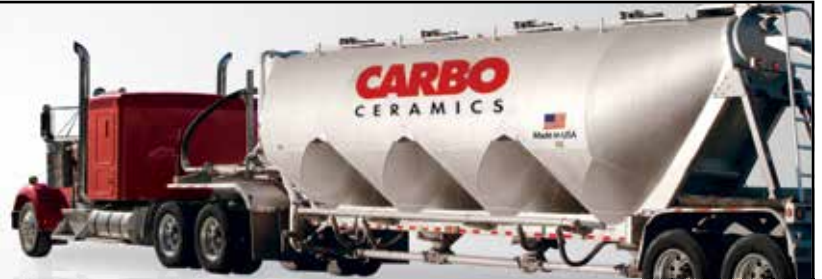
For more information contact TGS at:  
 Tel: +1 713 860 2100  
 Email: [info@tgs.com](mailto:info@tgs.com)



[WWW.TGS.COM](http://WWW.TGS.COM)  
© 2013 TGS-NOPEC GEOPHYSICAL COMPANY ASA. ALL RIGHTS RESERVED.



**FRAC  
or  
FICTION**



**FACT:** No foreign proppant offers the security of supply and quality assurance that CARBO provides.

**Why risk using any other proppant?** For more than 30 years, CARBO Ceramics® has maintained the highest standards of quality from the mine to the wellsite. Don't put your multimillion dollar investment and future production at risk with marginal alternatives – trust CARBO to deliver superior, high-conductivity proppant to maximize asset performance.



Go online to test your knowledge  
[FracOrFiction.com](http://FracOrFiction.com)

©2013 CARBO Ceramics, Inc.

2013-2014 KICK-OFF

# SPE GULF COAST SECTION

---

OUR 2013-2014 SPE GULF COAST SECTION KICK-OFF MEETING WILL BE HELD ON FRIDAY, AUGUST 16, 2013 AT THE HILTON HOUSTON WESTCHASE. THIS IS AN IMPORTANT OPPORTUNITY TO SHARE CONTACTS & BEST PRACTICES AMONG OUR MEMBER VOLUNTEERS AND TO LEARN FROM EACH OTHER.

---

The “State of the Section” report will be given from 1-3 PM. Following that, special training will be held for the 2013-14 SPE-GCS Committee and Study Group Chairs, Vice-Chairs, Program Chairs, Treasurers, and New Volunteers from 3-4 PM.

Please plan on joining us if possible. Everyone is welcome, and attendance is free of charge. Make sure to register as soon as possible so that we may arrange for participant materials and refreshments for all. Register and bring a friend and help them see why they should join the SPE.

Here is a wonderful chance to learn about the SPE Gulf Coast Section activities for all of those who want to be involved and become contributors!

*Please make sure to register so that we may have a proper count for materials & snacks.*

**WHEN**

*Friday, Aug. 16, 2013  
1 PM - 4 PM*

**REGISTER**

*[http://www.spegcs.org/  
events/register/2329/](http://www.spegcs.org/events/register/2329/)*

**WHERE**

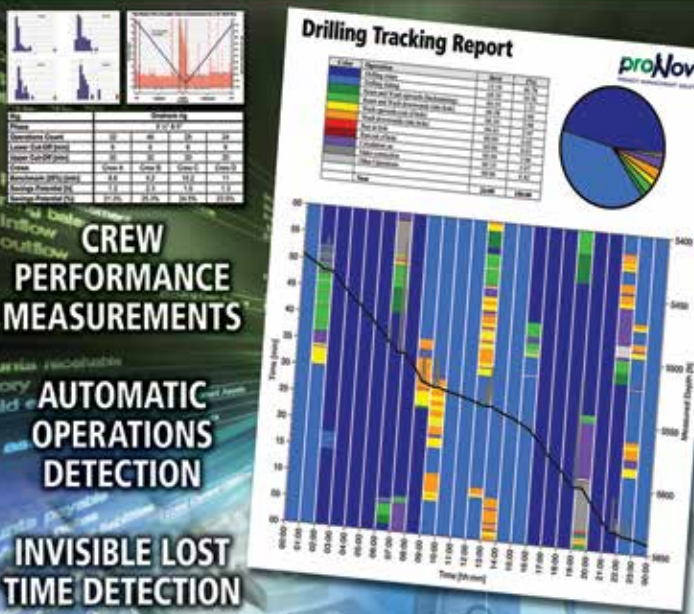
*Hilton Houston Westchase  
9999 Westheimer Road  
Houston Texas 77042*

**ORGANIZER**

*Kathy MacLennan  
[kmaclennan@spe.org](mailto:kmaclennan@spe.org)*

**PATENTED**  
**proNova™** by TDE

**DRILLING PERFORMANCE**



**CREW PERFORMANCE MEASUREMENTS**

**AUTOMATIC OPERATIONS DETECTION**

**INVISIBLE LOST TIME DETECTION**

**281.755.7595**  
**www.pronova-tde.com**

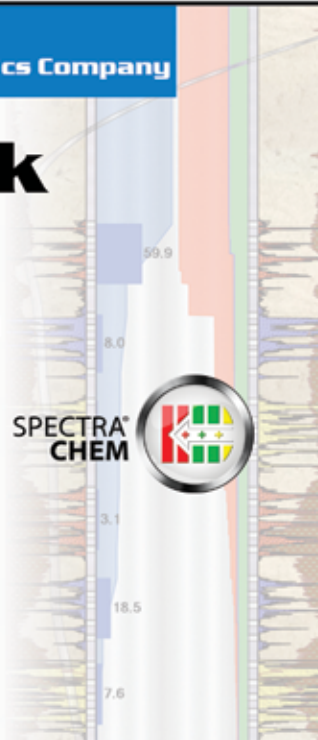
Measured Solutions from  
 The Completion Diagnostics Company

# Flowback Profile?

With ProTechnics' patented chemical analysis you can directly measure:


- Fracture Clean-up/ Flowback Efficiency
- Lateral Flow Assurance
- Offset Well Interference/ Communication
- Optimize After Frac Clean-Up

SPECTRA<sup>®</sup> CHEM



**ProTechnics**  
 COMPLETION DIAGNOSTICS  
 a division of Core Laboratories

Learn more at [www.corelab.com/protechnics](http://www.corelab.com/protechnics) or call us at 713-328-2320



# WORKSHOP

**Registration Now Open!**

Application of the Petroleum Resources Management System



**27-28 August 2013**  
 The Houstonian Hotel | Houston, Texas, USA

This two-day workshop will bring together a focused group of professionals who are engaged in reserve and resource assessment. Attendees are urged to actively participate in discussions on the interpretation and application of the PRMS and the recent document, *Guidelines for Application of PRMS*.

[www.spe.org/events/13ahou](http://www.spe.org/events/13ahou)



Society of Petroleum Engineers

Innovative Proppant Technology



**OilPlus™**  
 PROPPANTS

New OilPlus™ Proppants Provide Enhanced Oil Recovery for Your Well.

E-mail us at [oilfield@momentive.com](mailto:oilfield@momentive.com). **MOMENTIVE**

**TADPRO**  
 Torque & Drag Software



**Pegasus Vertex, Inc.**  
 (713)981-5558 | [sales@pvisoftware.com](mailto:sales@pvisoftware.com) | [www.pvisoftware.com](http://www.pvisoftware.com)



WED  
August 28

5:00 PM TO 7:30 PM

## 2013-2014 Mentoring & Social Kick-Off

The SPE Business Development Study Group and SPE Young Professionals Group are kicking off the 2013-14 season with a joint social at Sambuca Restaurant downtown! In addition to enjoying great food and company, we will be soliciting mentors and mentees to be a part of the SPE mentoring program.

Whether you are starting off in the industry or are an experienced professional, come out and learn what these groups have planned for the new season. Sign up to be a mentor or mentee and network with those in A&D, financiers, engineers, geoscientists and land professionals.

This event is free and limited to the first 150 registered guests. Register now to reserve your place. Registration includes two complimentary drinks per guest and appetizers from 5:00-7:30 PM. We hope to see you there!

Please contact Connie Lin at [CONLI@statoil.com](mailto:CONLI@statoil.com) or Brittany Niles at [Brittany.Niles@shell.com](mailto:Brittany.Niles@shell.com) with any questions about this event.

**Special thanks to our Diamond Sponsor, BMO Capital Markets and our Platinum Sponsor, Credit Agricole.**

### Event Info

#### LOCATION

*Sambuca Restaurant  
909 Texas Ave.  
Houston, TX 77002*

#### EVENT CONTACT

*Connie Lin  
713-485-2295  
[CONLI@statoil.com](mailto:CONLI@statoil.com)*

*Brittany Niles  
281-782-8194  
[Brittany.Niles@shell.com](mailto:Brittany.Niles@shell.com)*

#### MEMBERS

*Free – but limited to first 150 pre-registrants. No Walk-ins.*

#### NON-MEMBERS

*Free – but limited to first 150 pre-registrants. No Walk-ins.*



**VIKING**  
ENGINEERING, L.C.

- PETROLEUM CONSULTING
- HPHT WELL DESIGN
- APB ANALYSIS
- PROJECT MANAGEMENT
- FAILURE ANALYSIS
- TRAINING

**CRITICAL WELL ENGINEERING CONSULTING SERVICES**

VIKING'S TEAM OF HIGHLY TRAINED PETROLEUM PROFESSIONALS LEND THEIR EXPERIENCE TO CREATIVE WELL DESIGNS.

**WE CAN HELP PLAN AND EXECUTE YOUR TOUGH WELLS.**

VISIT OUR WEBSITE: [WWW.VIKINGENG.NET](http://WWW.VIKINGENG.NET)  
OR CALL: (281) 870-8455 IN HOUSTON



- New drilling and completion technologies
- Custom-engineered solutions
- Fit-for-purpose manufacturing
- Faster response.

[www.tiwtools.com](http://www.tiwtools.com)  
ENGINEERED TO FIT



TIW CORPORATION A Pearce Industries Company

# ARE YOU FEELING THE EFFECTS OF THE **Great Crew Change?**

*Replenish  
your company men  
with competent  
personnel...*

Signa's Wellsite Foreman Intern Training (WFIT) program does all the groundwork to provide operators with qualified company men. We screen, select and train optimal candidates, evaluating each of them throughout to ensure they're tailor-made for your company.

- Drilling or Completion
- Establish core skillsets
- Instill good habits
- Get quicker results
- Monitor progress



The WFIT program is a comprehensive 8-mo. training class utilized by large and small operators (As featured in *Offshore* magazine).

Signa Engineering Corp.  
Houston, TX USA  
[www.signaengineering.com](http://www.signaengineering.com)

Contact: Dave Roseland  
281.774.1026  
[droseland@signa.net](mailto:droseland@signa.net)

## Broaden your expertise.



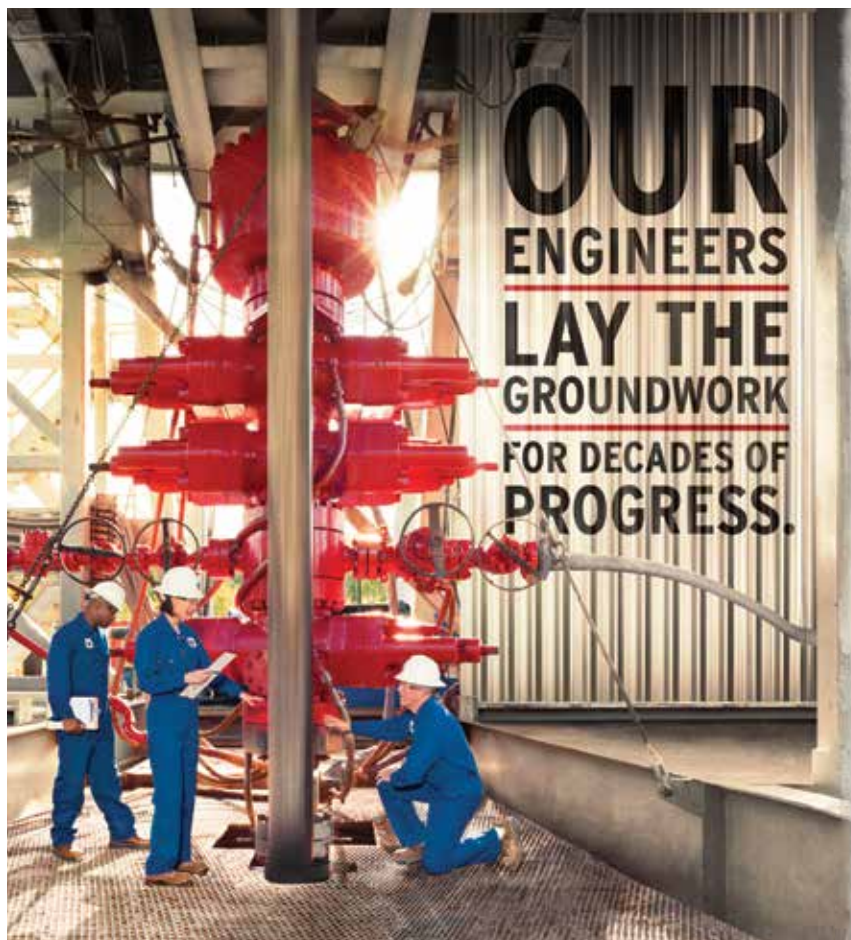
NExT oil and gas training and career development instructs more than 10,000 E&P professionals every year.

With hands-on mentoring and coaching, at a Schlumberger training facility or on the job, NExT training can help you expand your technical expertise.

To view our full list of courses, and to enroll, visit [www.NExTtraining.net](http://www.NExTtraining.net)

### Featured Course

Shale Play Production:  
Exploiting Production Sweet Spots  
October 7-10, 2013  
Denver, Colorado, USA



At Chevron, you'll join a team with the technology to take on big challenges, the integrity to do it responsibly, and the drive to keep the world moving forward. If you're up to the job, visit [chevron.com/careers](http://chevron.com/careers)

Chevron is seeking experienced petroleum engineers for production, reservoir, reservoir simulation, drilling and completions positions.

**JOIN THE  
CHALLENGE.**



An equal opportunity employer that values diversity and fosters a culture of inclusion. CHEVRON, the CHEVRON Halmark and HUMAN ENERGY are registered trademarks of Chevron Intellectual Property LLC. © 2013 Chevron U.S.A. Inc. All rights reserved.

# Evaluation of Horizontal Wells in the Eagle Ford Using Oil-based Chemical Tracer Technology

Horizontal well positioning through a target formation can have a significant impact on overall productivity from an unconventional oil well. This presentation will present the evaluation of two horizontal wells completed in the oil section of the Eagle Ford Shale. These wells were completed using similar completion designs (hybrid frac design) with the method and number of frac stages determined by the geology, petrophysical, or geomechanical data.

The presentation will describe how conventional analysis technologies including completion, flowback, and production data were compared to the relative oil flow from each stage measured using a recently developed hydrocarbon tracer technology to provide critical information on optimal well path design for use during future well development.

The stage production data provided by the use of hydrocarbon-based tracers allows engineers to modify and improve their completion and stimulation programs. This presentation will highlight tracer response interpretations of the two wells presented and the current status of the hydrocarbon-based tracer technology for hydraulic fracturing applications.

## Jon Spencer

Jon Spencer has 35 years of experience in the oil patch, 15 years with Halliburton as a Wireline Engineer performing open hole, cased hole and production logging services. He has spent the past 20 years with Tracerco performing both upstream and downstream tracer projects. Currently as the Upstream Technical Advisor, he designs and analyzes the performance of tracer projects for both waterflood / gasflood interwell applications and for frac / stimulation applications. Tracerco has performed a number of tracer-tagged frac projects from Texas to Alberta.

## Event Info

### SPEAKER

*Jon Spencer*  
Upstream Technical Advisor  
TRACERCO

### LOCATION

*Greenspoint Club*  
16925 Northchase Dr  
Houston, Texas 77060

### EVENT CONTACT

*Jonathan Godwin*  
281-921-6526  
[jgodwin@carboceramics.com](mailto:jgodwin@carboceramics.com)

### MEMBERS

*\$35 in advance, \$40 at door*

### NON-MEMBERS

*\$35 in advance, \$40 at door*

# We're GROWING...

Introducing our Total Managed Displacement Services (TMDS™):

Our proprietary suite of wellbore cleanout tools, non-pollutant displacement chemicals, surface pit cleanout and fluids filtration services, and direct job validation.

**Delivering the ultimate clean wellbore for maximizing completion success.**



[www.abrado-intl.com](http://www.abrado-intl.com)  
 Email us at: [info@abrado-intl.com](mailto:info@abrado-intl.com)



## Increase the reliability of your pipeline project with Flexpipe Systems' proven solutions

Flexpipe Systems' corrosion resistant linepipe products:

- Are available in 2", 3" and 4" ID
- Have rating pressures up to 2,000 psi
- Operate in temperatures up to 180°F (82°C)
- Come in spoolable or reel-less packaging

With over 55 million feet of linepipe and 80,000 fittings installed worldwide, we have the answers for your next pipeline challenge.

**ShawCor - when you need to be sure**



# Expect More

More **SYSTEMS**  
 More **SERVICES**  
 More **LOCATIONS**



Pump jacks with legendary quality and reliability have been the reputation of Lufkin for more than 100 years. In that same tradition, Lufkin now offers more artificial lift systems, more support services and more locations to serve operators around the world. These highly engineered solutions, supported by our experienced staff, deliver optimum production from your oil and gas wells.

Now, more systems and services to meet your requirements:

- Automation
- Beam Pumping Units
- Hydraulic Pumping Units
- Reciprocating Pumps
- Progressing Cavity Pumps
- Production Optimization
- Well Monitoring
- Secure Scada
- Plunger Lift
- Gas Lift
- Completion Products
- Maintenance & Repair
- Training

*The Energy Flows Through Us®*  
 LUFKIN.COM

THU/FRI  
September  
19/20

# SPE-GCS 30<sup>TH</sup> Annual Tennis Tournament

THU 4:00 PM - FRI 8:00 PM

The 30th Annual Society of Petroleum Engineers Gulf Coast Section Tennis Tournament will be held on THURSDAY, September 19th & FRIDAY, September 20th at The Houston Racquet Club located at 10709 Memorial Drive in Houston, Texas. Proceeds from the tournament benefit the SPE-GCS Scholarship Fund. In combination with other section functions, there have been 20 new scholarships for incoming college freshman studying petroleum engineering, math and sciences, and 89 renewed scholarships which include sophomores, juniors and seniors for their continued education in petroleum engineering. More than \$3 million dollars in scholarships have been awarded since 1963 to students through this program.

In 2012, we had a very successful tournament with over 80 players participating. Registrations and sponsorships raised \$50,000 in revenue. After tournament expenses, net proceeds of over \$26,100 dollars were contributed to the SPE-GCS Scholarship Fund.

Sponsors are a welcome and an essential part of making this event a success. All sponsors will be recognized in the tournament program and on the sponsorship billboard that is exhibited throughout the tournament. Please see the Sponsor Form for sponsorship levels. In-kind donations for ditty bags and door prizes are also accepted.

**On behalf of the entire 2013 SPE-GCS Tennis Committee, we look forward to seeing everyone for two fun-filled days of tennis!**

## QUESTIONS

Bob Fu  
713-591-9808  
bob.fu@bp.com

Suzanne del Rosario Davis  
832-618-5282  
sdelrosariodavis@lgc.com

## START TIMES

Mixed Doubles  
Begins Thursday  
September 19th - 6:00 PM

Tournament Doubles  
Begins Friday  
September 20th - 9:00 AM

## LOCATION

The Houston Racquet Club  
10709 Memorial Drive  
Houston, TX 77024  
713-464-4811  
houstonracquetclub.com

## DEADLINE

September 13, 2013  
Participation is limited and  
entries will be accepted on  
a first-come, first-served basis

30th Anniversary

## EVENT INFORMATION

There will be two flighted round robin events:  
Tournament Doubles – Friday, September 20th  
Mixed Doubles – Thursday evening, September 19th

The tournament doubles event is open to men and women and is a combined bracket. Partners may be of the same gender or mixed.

The committee will assist players who do not have a partner for any event.

## FLIGHTING

Championship – Advanced Players  
A – Regular & Advanced Players  
B – Intermediate Players  
C – Non-regular Players & Beginners

The SPE-GCS Tennis Committee reserves the right to allocate players to a different flight if necessary. Please rank yourself on the honor system.

## WHAT TO EXPECT

Lots of tennis, meeting old friends and making new ones. Door prizes, T-shirts, awards, meals and beverages.

Thursday – Light dinner  
Friday – Breakfast, lunch and snacks  
Hit & Grab – Friday after lunch  
Award presentations, door prizes & heavy appetizers – late Friday afternoon ~ 4PM

## RULES OF ENTRY

The event is open to members, nonmembers, guests, and friends of SPE. The only restriction is that tennis professionals are not allowed.

## REGISTRATION

Thursday, September 19th - 4:00 - 6:00 PM  
Friday, September 20th - 8:30 - 9:00 AM

## IMPORTANT NOTICE

All paid participants must wear their "Name Tags" during this event to have access to the food and drinks

## ENTRY FEE INFORMATION

\$125.00 Per person - Fee covers Tournament and Mixed Doubles for an individual player.  
\$50.00 for those only playing Mixed Doubles.  
\$25.00 – Spouse/Guest (Not Playing)  
Fees are due with entry form.

# PRODUCTIONER

USED BY EVERYONE,  
FROM THE FIELD PUMPER

ALL THE WAY UP TO MANAGEMENT

What our customers are saying:  
"Productioner is a great data repository  
and analysis tool. Data entered in the field is  
immediately available to corporate office."

- FEATURES**
- FIELD DATA CAPTURE
  - ALLOCATIONS
  - REPORTS & GRAPHS
  - CUSTOMIZABLE TEMPLATES
  - FULLY MANAGED SERVICE

Mi4 Corporation  
Ph: (713) 401-9584  
sales@productioner.com  
www.productioner.com



24/7 SUPPORT HOTLINE (866) 421-6665

## TAM SOLUTIONS

PROVEN, PREDICTABLE, PACKER PERFORMANCE



### TAM PosiFrac™ Systems:

With PosiFrac™ you have an all-inclusive, multi-stage system for open-hole hydraulic fracture applications. And you have the experts to run it from service centers in your region. You'll get your completion on depth, on time, with the best swellable packers available. And that's as complete as it gets.



45 YEARS OF SUCCESS

WELL INTERVENTION | DRILLING & COMPLETIONS | UNCONVENTIONAL RESOURCES | RESERVOIR OPTIMIZATION

[www.tamintl.com](http://www.tamintl.com)

# Directionally challenged?

If your directional drilling program is more challenging than you expected, maybe you need a new directional driller. Maybe you need Ryan Directional Services, Inc.

Ryan has experience in virtually every important oil and gas shale play. We know the potential roadblocks and how to address them before they cost you money. And that takes drilling to a new level of efficiency.

Call Ryan at 281.443.1414 and see how our directional drilling program will change your experience from challenging to rewarding.

[www.nabors.com](http://www.nabors.com)



VIBRATION TECHNOLOGY  
LEADING THE INDUSTRY IN STUCK PIPE RECOVERY  
INNOVATIVE TECHNOLOGY FOR REMOVING STUCK TUBULARS

- + WORKOVER
- + COMPLETIONS
- + DRILLING

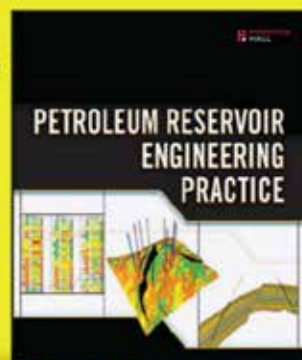


Vibration Technology

[www.layne.com](http://www.layne.com)

The Up-To-Date,  
Practical Guide to Modern  
Petroleum Reservoir  
Engineering by  
**DR. NNAEMEKA EZEKWE**

Available from Amazon.com,  
informIT.com, and other  
fine resellers.



[informIT.com](http://informIT.com)

# Entry Form *Entry Deadline – Friday, September 13, 2013*

SPE-GCS EVENTS **30TH ANNUAL TENNIS TOURNAMENT**

Name \_\_\_\_\_

Gender \_\_\_\_\_ Company \_\_\_\_\_

Address \_\_\_\_\_

City \_\_\_\_\_ State \_\_\_\_\_ Zip \_\_\_\_\_

Phone \_\_\_\_\_ Email \_\_\_\_\_

## PLAYERS **1 ENTRY FORM PER PLAYER**

Tournament Doubles \_\_\_\_\_ \$125 per person

Mixed Doubles Only \_\_\_\_\_ \$50 per person

Spouse/Guest/Speaker \_\_\_\_\_ \$25 per person

Your Rank:  Championship  A  B  C

Your T-Shirt Size:  M  L  XL  XXL

## FRIDAY TOURNAMENT DOUBLES

Are you playing tournament doubles?  Yes  No

Partner's name: \_\_\_\_\_

*(Partner must send in own entry form)*

Partner's Rank:  Championship  A  B  C

Do you need a partner?  Yes  No

## THURSDAY MIXED DOUBLES

Are you playing in mixed doubles?  Yes  No

*(Additional \$50 if Mixed doubles partner is not playing in Tournament Doubles.*

*\$50 MIXED ONLY)*

Partner's name: \_\_\_\_\_

*(Partner must send in own entry form)*

Partner's Rank:  Championship  A  B  C

## METHOD OF PAYMENT

Payment:  Check  Visa  MC  AMEX  DISC

Card Number \_\_\_\_\_ Expiration Date \_\_\_\_\_

*(If paying with credit card please email entry to SPE-GCS Tennis c/o erin.chang@bp.com)*

Name as it appears on card \_\_\_\_\_ Email Address \_\_\_\_\_

Name of sponsoring company *(If being sponsored)* \_\_\_\_\_

Amount Enclosed/Amount to Charge *(Make checks payable to SPE-GCS Tennis)* \_\_\_\_\_

Mail form/check to:

SPE-GCS Tennis

c/o Erin Chang

200 Westlake Park Blvd, 775C

Houston, Texas 77079

*If paying by credit card, forms may be e-mailed*

*To the SPE-GCS tennis treasurer at:*

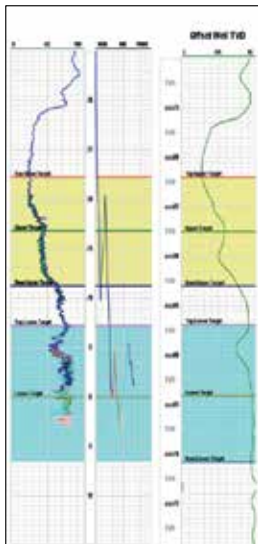
*erin.chang@bp.com*

## SPONSORS

*Sponsors are a welcome and essential part of making this event a success. In recognition of their support, sponsors will be identified with special signage and privileges. 100% of the net proceeds raised by the tournament will be applied toward scholarships for the Society of Petroleum Engineers Gulf Coast Section College Scholarship Fund. All sponsors will have their company name on the tournament sponsor board and recognized in the tournament program according to sponsorship levels. Levels of available sponsorships are listed in the table below along with the number of players your company is entitled to register as part of your sponsorship. Separate entry forms are required for each player.*

- Platinum Sponsor** **\$5,000**  
*(Entitled to register 8 tournament players)*
- Gold Sponsor** **\$2,500**  
*(Entitled to register 4 tournament players)*
- Silver Sponsor** **\$1,500**  
*(Entitled to register 3 tournament players)*
- Bronze Sponsor** **\$1,000**  
*(Entitled to register 2 tournament players)*
- Court Sponsor** **\$500**  
*(Entitled to register 1 tournament player)*

**SPE-GCS also appreciates in-kind donations such as door prizes, gift certificates, ditty bag items, tennis balls, etc.**



**Geosteering Services**

Highly qualified personnel with 20+ years DD & LWD experience

24/7 Real-time monitoring or reports from LAS files

Proprietary software

**Geosteering Software**

TST interpretation for GR only measurements

Image displays / interpretation of azimuthal GR, resistivity or density measurements

Resistivity modelling / interpretation for LWD propagation resistivity

Software sales, training and technical support

[info@geosteering.com](mailto:info@geosteering.com)

Call 281 573 0500

PREMIER INDUSTRY EVENTS DEVOTED TO RAPIDLY EMERGING TECHNOLOGY

# FRAC SCHOOL

Houston, Sept. 9th-13th

You are invited you to attend our state-of-the-art, week-long course on hydraulic fracturing. Best known for a balanced presentation of the theoretical and the practical, Frac School provides a unique learning experience.

The class is an introduction to hydraulic fracturing. This course is ideal for reservoir, production and operations engineers serving on multidisciplinary asset teams. Frac School is the course of choice for both the engineer with less than 5 years experience in fracturing or those who just need a refresher.

Find out more at [www.fracschool.com](http://www.fracschool.com)

Learn about our other events:  
[www.petroleumetc.com](http://www.petroleumetc.com)

## Measure Hydrocarbon Stage Production

...No Tools, Coiled Tubing or Wireline



Providing Insight Onsite



To learn more call or email:

Tel: 281 291 7769

Email: [reservoir@tracerco.com](mailto:reservoir@tracerco.com)

[www.tracerco.com](http://www.tracerco.com)

Reservoir Technologies





WED+ THU

August 21/22

6:30 AM TO 4:00 PM

THE 17TH ANNUAL

# Gulf of Mexico Deepwater Symposium & Exhibition

---

---

SPE DELTA SECTION

---

---

The Gulf of Mexico Deepwater Symposium and Exhibition is a joint effort between the Delta Section of the Society of Petroleum Engineers (SPE), New Orleans Geological Society (NOGS) and the American Association of Drilling Engineers (AADE).

The goal of these annual symposiums is to share knowledge, best practices, new technologies, and improvements to existing technologies with a focus on case studies. There are approximately 60 technical presentations given, which cover a wide array of topics including well completions and interventions, reservoir and economics, geoscience, drilling technology, production systems, HS&E / Regulatory, emerging technologies, and Pipeline / Infrastructure.

This symposium attracts individuals with varying backgrounds and interests, including those who are not members of the sponsoring organizations. Additionally, students from local universities who are pursuing careers in the oil and gas industry are encouraged to attend. These students are given the opportunity to attend without having the expense of registration fees.

**LOCATION**

*Hilton New Orleans Riverside  
Two Poydras Street  
New Orleans, LA 70130  
504-561-0500*

**EVENT INFO**

*<http://www.deepwaternola.org>*

**EVENT CONTACT**

*Matt Wandstrat  
985-801-4300  
[mattw@llog.com](mailto:mattw@llog.com)*

**MEMBERS**

*\$250*

**NON-MEMBERS**

*\$300*

## The Future of Water in Unconventional Oil and Gas



Water management is complex and rapidly evolving, creating both risks and opportunities for operators, service providers, and investors. Two new, definitive reports by the water and unconventional oil and gas experts from IHS and CAP Resources bring together current best field practices, actual detailed spending levels, cost data, market players, scenario drivers, and opportunity insights essential to improving strategies.

Two reports:

**Water Management Strategies in the US**  
**Water Market Opportunities in the US**

For additional information:

**Maria Bertram**

1 781 301 9438

[maria.bertram@ihs.com](mailto:maria.bertram@ihs.com)

[ihs.com/waterunconventionals](http://ihs.com/waterunconventionals)



# PREMIUM CONNECTIONS

Meeting your exacting requirements.

SealLock® | WedgeLock®  
 TKC™ | TS™  
 connection  
 technology



[www.huntingplc.com](http://www.huntingplc.com)

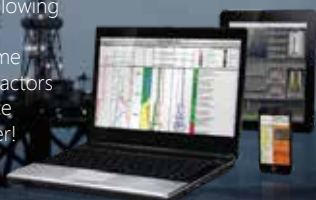
© 2013 Hunting



### Drilling Surveillance and Geosteering in Real-Time!

Petrolink is uniquely vendor neutral allowing you to bring your data into your own environment. We provide true real-time interoperability between rig site contractors and your drilling and geoscience office teams to Make Better Decisions, Faster!

[www.petrolink.com](http://www.petrolink.com)  
[sales@petrolink.com](mailto:sales@petrolink.com)



### PROFESSIONAL REGISTRATION REVIEW COURSES FOR PETROLEUM ENGINEERING

The Courses covers topics on the Texas State Board Petroleum Engineering Professional Examination.

HOUSTON COURSES 8:00 AM - 5:00 PM

I August 19 thru 23, 2013

II October 7 thru 11, 2013

For More Information: 405-822-6761

E Mail: [bingwines@cox.net](mailto:bingwines@cox.net)

[winrockengineeringinc.com](http://winrockengineeringinc.com)

## WANT TO REACH OVER 15,000 SPE MEMBERS IN THE GREATER HOUSTON AREA?

*Advertise your business in the SPE-GCS Newsletter*

Connect is printed 12 times per year and contains premium positions for advertisers wanting to reach some of the most influential oil & gas professionals in the world. We are still selling ads for the 2013-2014 program year, and our ad sizes have been updated. Please visit the SPEGCS website for more information regarding ad pricing and specifications.

**IF YOU'D LIKE TO PLACE AN AD IN THE SPE-GCS NEWSLETTER OR WEBSITE PLEASE CONTACT:**

Pat Stone, Star-Lite Printing, Inc

281-530-9711

[starlite1@sbcglobal.net](mailto:starlite1@sbcglobal.net)

WED

September 15

8:00 AM TO 5:00 PM

# RPSEA Onshore Production Conference

---

---

## TECHNOLOGY TRANSFER

---

---

The RPSEA Onshore Production Conference is just around the corner and SPE-GCS members are invited to participate. RPSEA has an active research program with a current portfolio of projects all targeting technology that will benefit the onshore production community. This conference offers an ideal opportunity to hear the latest perspectives and exchange ideas with industry experts.

Attendees will learn the latest perspectives and benefits on what's being developed in:

- Water Treatment
- Improving Oil Production and Recovery
- Reducing Operating Costs

### LOCATION

*Bureau of Economic Geology's  
Houston Research Center  
11611 West Little York Rd  
Houston, TX 77041*

### EVENT INFO

*<http://rpsea.org>*

### EVENT CONTACT

*Greg Palmer  
832-248-9067  
[greg.palmer@sas.com](mailto:greg.palmer@sas.com)*

### REGISTRATION

*Paid registration is required.  
Visit <http://rpsea.org> to attend!*



PROCESS SOLUTIONS

MAXIMIZING PERFORMANCE THROUGH OPERATIONAL EXCELLENCE

- OPERATIONS ASSURANCE
- SUBSEA PRODUCTION REALIZATION
- FLOW ASSURANCE
- SEPARATION SYSTEMS
- GAS TREATMENT & TRANSPORT
- PRODUCED WATER MANAGEMENT
- SAND & SOLIDS MANAGEMENT
- CONTAMINANTS MANAGEMENT
- CHEMICAL MANAGEMENT
- PROCESS/PRODUCTION OPTIMIZATION
- PROCESS TROUBLESHOOTING
- OPERATIONS PERFORMANCE STRATEGY [OPS]



WE ARE DEDICATED TO DELIVERING STRATEGIC VALUE FOR OUR CLIENTS.

Our highly skilled technical team understand the changing and challenging needs of the oil and gas industry and the importance of objective, innovative and cost effective solutions.

contact@maxoilsolutions.com • www.maxoilsolutions.com  
 ABERDEEN | LONDON | HOUSTON | STAVANGER | KUALA LUMPUR | PERTH



*Engineering consulting and training services to maximize the value of your investment in flow assurance*

*SPT Group has one of the world's leading dedicated flow assurance consulting teams working with multiphase flow technology in wells and pipelines.*

*Every day we work with the world's leading energy corporations and oil and gas service companies to locally deliver specialist consulting and training services through our global offices and training facilities.*

*To learn more about the value we offer please visit [www.sptgroup.com](http://www.sptgroup.com)*

**SPT GROUP**  
 A Schlumberger Company



**Get More from your Core**

**With reservoirs becoming increasingly complex, you need the most accurate information you can get to better understand your reservoir.**

Weatherford Labs helps you get more from your core by combining an unsurpassed global team of geoscientists, engineers, technicians and researchers with the industry's most comprehensive, integrated laboratory services worldwide. From core analysis, sorption, geochemistry and isotopic composition to detailed basin modeling and comprehensive data packages, we provide you with real reservoir rock and fluid information that hasn't been distilled by a simulator or iterated by software.

We call it "The Ground Truth™" – giving you the accurate answers you need for better reservoir understanding. You'll call it a better return on your reservoir investment. To learn more, contact [TheGroundTruth@weatherfordlabs.com](mailto:TheGroundTruth@weatherfordlabs.com).



**Weatherford**  
 LABORATORIES  
[weatherfordlabs.com](http://weatherfordlabs.com)

© 2013 Weatherford. All rights reserved. Incorporates proprietary and patented Weatherford technology.

DIRECTIONAL AND HORIZONTAL DRILLING SPECIALISTS



WWW.NOVADIRECTIONAL.COM



**Technical Documentation Development and Management Consulting**

*Documentation help = more available engineering time*

- Technical Writing**
  - + Develop content
  - + Multiple authors – consistent voice
  - + Formatting, grammar & readability
  - + Develop / edit graphics
- Management Consulting**
  - + Documentation & project management
  - + Procedures, processes & workflow
  - + RFPs, RFQs & contract management

**ZETRIC®**  
[www.zetric.com](http://www.zetric.com)

*- Quick turnaround  
 - On-demand resource  
 - Turnkey publication*

TUE + WED

August 27/28

8:00 AM TO 5:00 PM

SPE INTERNATIONAL

# Application of the Petroleum Resources Management System

## PRMS

This two-day workshop will bring together a focused group of professionals who are engaged in reserve and resource assessment. Attendees are urged to actively participate in discussions on the interpretation and application of the PRMS and the recent document, Guidelines for Application of PRMS. The PRMS is the recognized global standard of petroleum resource classification, accepted by numerous national entities and E&P companies for internal reporting use.

The application of PRMS requires dialogue within the industry to ensure that it remains relevant. This workshop is a unique opportunity to converse with peers and experts who seek to both improve and provide clarity to the accuracy, reliability, and utility of the PRMS.

The workshop technical committee is comprised of reserve evaluation experts with members from several of the PRMS-sponsoring committees.

### WHERE

*The Houstonian Hotel  
111 N Post Oak Ln.  
Houston, TX 77024*

### EVENT ORGANIZER

*SPE International  
972-952-9393 Ext. 216  
registration@spe.org*

### MEMBER

*\$825 before 8/2/13, \$925 after*

### NONMEMBER

*\$1,025 before 8/2/13, \$1,125 after*

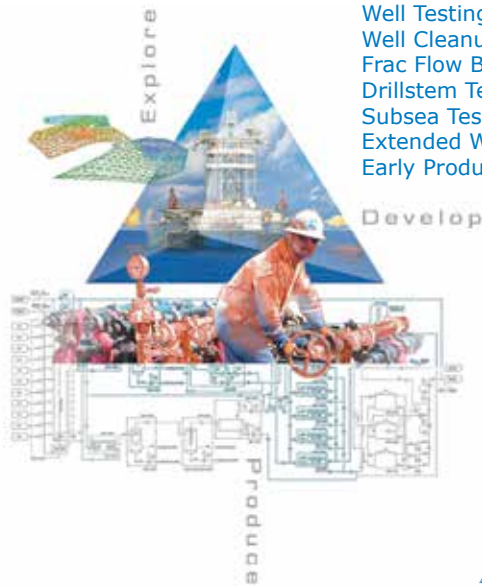
### APPLICATION

*See page 23*

## Delivering Testing Results in Every Phase

### Production Testing Services

- Well Testing
- Well Cleanup
- Frac Flow Back
- Drillstem Testing
- Subsea Test Trees
- Extended Well Tests
- Early Production Facilities

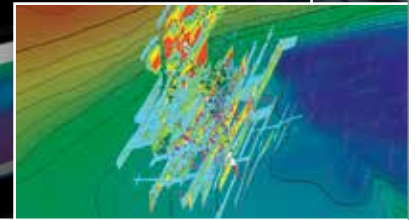


tetrathec.com

© TETRA and the TETRA logo are registered trademarks of TETRA Technologies, Inc. All rights reserved.

## Mangrove

RESERVOIR-CENTRIC STIMULATION  
DESIGN SOFTWARE



Mark of Schlumberger © 2013 Schlumberger 13570035

At last, a stimulation design software that can model the complexities of unconventional plays.

With Mangrove\* software, you can integrate all your reservoir data into the Petrel\* E&P software platform and get fast, accurate simulations in complex, unconventional reservoirs. Mangrove software links reservoir characterization, stimulation, and production, showing you how to complete and stimulate your well for maximum ROI.

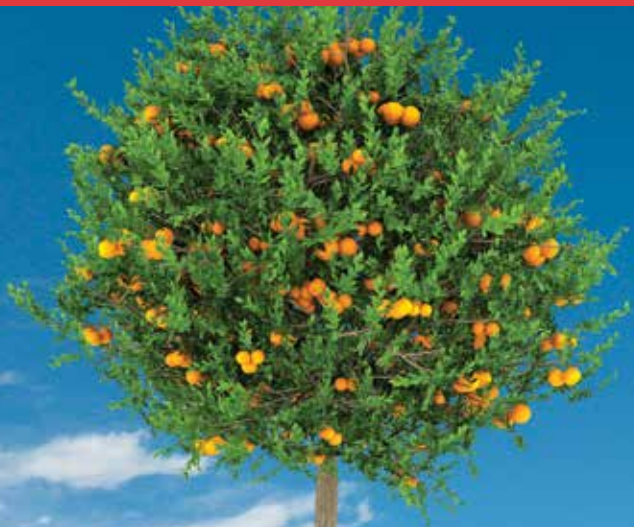
Engineered staging and perforating designs helped PDC Mountaineer increase production more than 50%.

"PDCM will not complete any lateral Marcellus wells without first running this service and evaluating the results."  
—Dewey Gerdom, CEO, PDC Mountaineer.

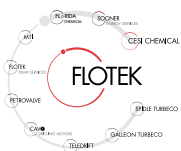
Find out more at  
[slb.com/Mangrove](http://slb.com/Mangrove)

# Schlumberger

## ORANGE IS THE NEW GREEN



Flotek's citrus-based, environmentally friendly **CnF**<sup>®</sup> fracturing additives will revolutionize the way the world thinks about fracturing and will improve your production.



For more information contact  
[cesimkt@flotekind.com](mailto:cesimkt@flotekind.com)  
or call  
832-308-CESI (2374)

APPLICATION OF THE PETROLEUM RESOURCES MANAGEMENT SYSTEM (PRMS)  
SPACE IS LIMITED - REGISTER EARLY

Name (First, Middle, Last) \_\_\_\_\_ SPE Member  Yes  No

Member No \_\_\_\_\_ Job Title/Organization \_\_\_\_\_

Address \_\_\_\_\_

City \_\_\_\_\_ State \_\_\_\_\_ Zip \_\_\_\_\_

Phone \_\_\_\_\_ Email \_\_\_\_\_

Do you wish to allow your email address and phone number to be included in the attendee listing?  Yes  No

How many years experience do you have in the industry?  1 year  1-5 years  6-10 years  10+ years

Will you be attending the Reception on Monday, August 26th?  Yes  No Tuesday, August 27th?  Yes  No

Please inform us of mobility or special dietary needs: \_\_\_\_\_

**WORKSHOP FEE:**

Before August 2nd 2013  USD 825 for SPE Members  USD 1,025 for Nonmembers

After August 2nd 2013  USD 925 for SPE Member  USD 1,125 for Nonmembers

**COMPANION TRAINING COURSE:**

Monday, August 26th (NOT included in workshop fee). Managing Your Business Using PRMS and SEC Standards

Instructor: Rawdon Seager  USD 750 for SPE Members  USD 1,125 for Nonmembers

**Workshop fee includes** technical session, materials, attendee list, continental breakfasts, lunches, coffee breaks, and receptions. **Accommodations are NOT included in the workshop registration fee.** Contact The Houstonian Hotel direct at 1.713.680.2626 to reserve your room at the negotiated rate of USD 179 plus taxes per night. Rates at the hotel are offered three days before and after the workshop, based on availability. You **MUST** identify yourself as an SPE workshop attendee. After August 2nd 2013, hotel reservations will be subject to availability at the prevailing rates.

**PAYMENT:**

Credit Card:  American Express  MasterCard  Visa Total Amount: \_\_\_\_\_

Card Number \_\_\_\_\_ Expiration Date \_\_\_\_\_ Security Code \_\_\_\_\_

Name of Credit Card Holder \_\_\_\_\_

Signature: (required) \_\_\_\_\_ Date \_\_\_\_\_

**Mail, fax, or email completed Registration Form with payment or credit card information to:**

Registrar, SPE Applied Technology Workshop

Telephone: +1.972.952.9393

Society of Petroleum Engineers

Fax: +1.972.852.9292

PO Box 833836, Richardson, Texas USA

Email: [registration@spe.org](mailto:registration@spe.org)

75083-3836

Submit registration online (secured by VeriSign) at [www.spe.org](http://www.spe.org)

Registration form will not be processed without payment unless authorized by meeting manager. For questions or additional information, contact Stacie Ehler at [sehler@spe.org](mailto:sehler@spe.org).

**Cancellation Policy:** Cancellations and requests for refunds must be received by SPE in writing on or before August, 2nd 2013

# PetroSkills®

## Build Your Foundation

To maximize convenience, PetroSkills will deliver its most popular courses multiple times in the Houston area over the next few months. These courses build a firm foundation and a solid platform for careers in their disciplines.



- **Basic Petroleum Engineering Practices – BE:**  
July 8-12, 9-13 Sept, Nov 18-22
- **Production Operations 1 – P01:**  
June 10-21, Sept 16-27, Dec 2-13
- **Applied Reservoir Engineering – RE:**  
June 17-28, July 15-26, Nov 4-15, Dec 2-13
- **Completions and Workovers – CAW:**  
June 24-28, October 7-11, November 11-15
- **Evaluating and Developing Shale Resources – SRE:**  
May 20-24, August 26-30

For details on these or our other 250 sessions in the Gulf Coast, contact Patty Davis, (832) 426-1203 or [patty.davis@petroskills.com](mailto:patty.davis@petroskills.com), or see details and full selection at [www.petroskills.com](http://www.petroskills.com)

# Dyna-Drill®

Manufacturers of  
Drilling Motor Components

- **Mud Motor Power Sections** • **Coil Tubing Power Sections**  
(Sizes: 2 7/8" to 11 1/2") (Sizes: 1 11/16" to 3 3/4")
- **Matrix-3® Coated Bearings** • **Precision Machining**

[www.dyna-drill.com](http://www.dyna-drill.com)

Power That Lasts™



PPI  
Technology  
Services LLC

600+ Well  
Certifications

Well Design and Certification  
for Technically Challenging Projects

[ppitech.net](http://ppitech.net)

(713) 464-2200

## Intertek

Westport Technology Center

Providing Expertise in  
Reservoir Characterization and Optimization

Services include:

- PVT and Fluid Phase Behavior
- Routine and Special Core Analysis
- Enhanced Oil and Gas Recovery
- Geochemistry
- Petroleum Geology and Petrophysics
- Unconventional Reservoirs
- Drilling Fluids
- Flow Assurance
- Oilfield Corrosion
- Petroleum Microbiology

Intertek  
Westport Technology Center  
6700 Portwest Drive  
Houston, Texas  
713.479.8400  
[westportservices@intertek.com](mailto:westportservices@intertek.com)

[www.intertek.com](http://www.intertek.com)



## Reaching Deeper

With the largest fleet of deep, high-pressure coiled tubing, coupled with basin-specific expertise

## Going Further

To find solutions to our customers' wellsite challenges, safely and efficiently

That's the IPS Advantage



Integrated Production Services

[www.ipsadvantage.com](http://www.ipsadvantage.com)



## Integrated Energy Services, Inc.

Robert Barba  
Petrophysicist

Log Analysis  
Completion Optimization

500 N. Capital of TX Hwy  
Building 4-150  
Austin, TX 78746  
C: (713) 823-8602  
F: (713) 583-9400  
[RBarba75@gmail.com](mailto:RBarba75@gmail.com)

[www.integrated-energy-services.com](http://www.integrated-energy-services.com)



## Rose & Associates

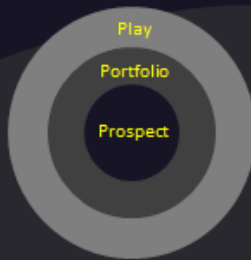
Courses Consulting Software  
Improving E & P Effectiveness

**Unconventional Resource  
Valuation Course** (3 to 5 days)

### UCRA Software

To model, value and risk  
drilling in resource plays

lisaward@roseassoc.com



Providing Engineered  
**Solutions**

281.955.2900  
www.stress.com



**STRESS  
ENGINEERING  
SERVICES INC.**  
DESIGN • ANALYSIS • TESTING

STUDY GROUP PETRO-TECH

COMING SEPTEMBER 10TH

# ARIES

## SPEAKER

*Suzanne del Rosario-Davis  
Sr. Production Consultant  
Halliburton/Landmark*

## LOCATION

*Sheraton Brookhollow  
3000 North Loop West  
Houston, Tx 77092*

## EVENT CONTACT

*Marci Nickerson  
713-236-4202  
mnick52@sbcglobal.net*

## MEMBERS

\$38

## NON-MEMBERS

\$48

SPECIAL ANNOUNCEMENT

# PHDWIN™

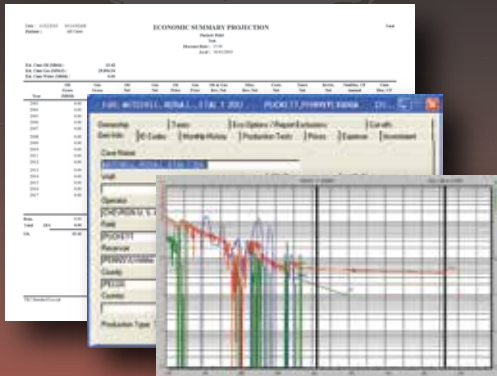
Integrated Economics & Decline Curve Analysis

NOW EVEN MORE POWERFUL WITH

# PHDRMS™

Reserves Management System

The complete solution for evaluating,  
managing, and reporting reserves and  
performance data.



Schedule an **online**  
presentation  
**TODAY!**

TRC Consultants, LC 888-248-8062 www.phdwin.com

# SPE GULF COAST SECTION DIRECTORY

Your guide to your organization leaders

## Officers

### CHAIR

Mike Strathman, The Trinity Group, Inc.  
713-614-6227  
mike-strathman@att.net

### VICE-CHAIR

Jeanne Perdue, Occidental Oil and Gas  
713-215-7348  
jeanne\_perdue@oxy.com

### SECRETARY

David Flores, Consultant  
713-528-1881  
david\_p\_flores@yahoo.com

### TREASURER

Robert Bruant, Jr., BP America, Inc.  
281-366-2157  
Robert.Bruant@bp.com

### VICE TREASURER

Lucy King, Miller and Lents, Ltd.  
713-308-0343  
lking@millerandlents.com

### CAREER MANAGEMENT

Patty Davis, PetroSkills  
832-426-1203  
Patty.Davis@petroskills.com

### COMMUNICATIONS

Valerie Martone, Anadarko  
832-636-3196  
Valerie.Martone@anadarko.com

### COMMUNITY SERVICES

Amy Timmons, Weatherford  
713-836-6563  
amy.timmons@weatherford.com

### EDUCATION

Gabrielle Guerre, Ryder Scott  
713-750-5491  
gabrielle\_guerre@ryderscott.com

### MEMBERSHIP

Xuan (Sun) VandeBerg Harris, Consultant  
832-444-5143  
xuan.harris@gmail.com

### PAST CHAIR

Steve Baumgartner, Marathon Oil Corp.  
713-296-3190  
sbaumgartner@marathonoil.com

### PROGRAMS

David Tumino, Murphy Oil Corp.  
281-717-5123  
tuminospe@hal-pc.org

### SOCIAL ACTIVITIES

Jim Sheridan, Baker Hughes  
281-432-9202  
jim.sheridan@bakerhughes.com

### TECHNOLOGY TRANSFER

Carol Piovesan, APO Offshore  
281-282-9291  
cpiovesan@apooffshore.com

### YOUNG PROFESSIONALS

Simeon Eburi, Chevron  
simeon.eburi@chevron.com  
806-544-0829

### DIRECTOR 2012-14

Alex McCoy, Occidental Oil and Gas  
713-366-5653  
alexander\_mccoy@oxy.com

### Kevin Renfro, Anadarko

832-636-8613  
kevin.renfro@anadarko.com

### Wolfgang Deeg, Shell

281-544-8279  
wjfdeeg@spemail.org

### DIRECTOR 2013-15

Trey Shaffer, ERM  
281-600-1016  
Trey.Shaffer@erm.com

### John Lee, UH

713-743-4877  
wjlee3@uh.edu

### Deepak Gala, Shell

281-544-2181  
deepak.gala@shell.com

### SPE GULF COAST NORTH AMERICA REGIONAL DIRECTOR

Bryant Mueller, Aclaro Softworks, Inc.  
713-781-2000 x 300  
bryant.mueller@aclaro.com.

## Committee Chairs

### AWARDS

James Rodgerson, BP  
281-221-4085  
james.rodgerson@bp.com

### CONTINUING EDUCATION

Dorian Hicks, Rice University  
713-444-3230  
dth1@rice.edu

### ESP WORKSHOP

Noel Putscher, Newfield  
281-674-2871  
nputscher@newfield.com

### GOLF

Cameron Conway, Cactus Pipe  
281-217-0660  
cconway@cactuspipe.com

### INTERNSHIPS

Gabrielle Guerre, Ryder Scott  
713-750-5491  
gabrielle\_guerre@ryderscott.com

### MAGIC SUITCASE

Sean K. O'Brien, Chevron  
832-854-3660  
sean.obrien@chevron.com

### NEWSLETTER

John Jackson, CCR Technologies  
713-998-3121  
editor@spegcs.org

### SCHOLARSHIP

Tanhee Galindo, BASF  
713-428-4919  
tanhee.galindo@basf.com

### SPORTING CLAYS

Paul Conover, NOV  
713-346-7482  
paul.conover@natoil.com

### TENNIS

Bob Fu, BP  
713-591-9808  
bob.fu@bp.com

### WEB TECHNOLOGY

Subash Kannan, Anadarko  
713-385-7242  
subash\_kannan@yahoo.com

### SECTION MANAGER

Kathy MacLennan, SPE-GCS  
713-779-9595 x 813  
kmaclennan@spe.org

## Study Group Chairs

### BUSINESS DEVELOPMENT

Steve Mullican, Grenadier Energy Partners  
281-907-4120  
smullican@grenadierenergy.com

### COMPLETIONS & PRODUCTION

Mark Chapman, CARBO Ceramics  
281-921-6522  
mark.chapman@carboceramics.com

### DIGITAL ENERGY

Rick Morneau  
713-504-1115  
RickMorneau@gmail.com

### DRILLING

Joe Tison, Greene Tweed  
281-784-7805  
wtison@gtweed.com

### GENERAL MEETING

Raja Chakraborty, Shell  
281-544-2148  
Raja.Chakraborty@shell.com

### HEALTH, SAFETY, SECURITY, ENVIRONMENT AND SOCIAL RESPONSIBILITY

Trey Shaffer, ERM  
281-600-1016  
trey.shaffer@erm.com

### INTERNATIONAL

Michael Cherif, ExxonMobil  
713-656-7303  
michael.h.cherif@exxonmobil.com

### NORTHSIDE

Naval Goel  
650-307-7267  
navalgoel@hotmail.com

### PERMIAN BASIN

Amy Timmons, Weatherford  
713-836-6563  
amy.timmons@weatherford.com

### PETRO-TECH

Marci Nickerson, Consultant  
713-446-3400  
mnick52@sbcglobal.net

### PROJECTS, FACILITIES, CONSTR.

Bill Kinney, Wood Group Kenny  
281-646-4198  
william.kinney@woodgroupkenny.com

### RESEARCH & DEVELOPMENT

Skip Davis, Technology Intermediaries  
281-359-8556  
skdavis@technologyintermediaries.com

### RESERVOIR

Jose Villa, Shell  
281-544-2612  
j.villa@shell.com

### WATER & WASTE MANAGEMENT

Joseph Kilchrist, Ziff Energy  
713-302-2727  
jkilchrist@sbcglobal.net

### WESTSIDE

Alex McCoy, Occidental Oil & Gas  
713-366-5653  
alexander\_mccoy@oxy.com

# CONNECT

## Information

## Newsletter Committee

CHAIRMAN | John Jackson  
editor@spegcs.org

AD SALES | Pat Stone  
starlite1@sbcglobal.net

BOARD LIAISON | Valerie Martone

EDITOR/DESIGN | Deuce Creative  
deucecreative.com

## SPE Houston Office

### GULF COAST SECTION MANAGER

Kathy MacLennan | kmaclellan@spe.org

### GCS ADMINISTRATIVE ASSISTANT

Sharon Harris | sharris@spe.org

### HOURS & LOCATION

10777 Westheimer Road, Suite 1075

Houston, Texas 77042

P 713-779-9595

F 713-779-4216

Monday - Friday 8:30 a.m. to 5:00 p.m.

## Photo Submissions

We are looking for member photos to feature on the cover of upcoming issues! Photos must be at least 9" by 12" at 300 DPI. Email your high resolution picture submissions to:  
editor@spegcs.org

## Change of Address

To report a change of address contact:  
Society of Petroleum Engineers  
Member Services Dept.  
P.O. Box 833836  
Richardson, Texas 75083-3836  
1.800.456.6863  
service@spe.org

## Contact

For comments, contributions, or delivery problems, contact [editor@spegcs.org](mailto:editor@spegcs.org).

# WANT TO REACH OVER 15,000 SPE MEMBERS IN THE GREATER HOUSTON AREA?

*Advertise your business in the SPE-GCS Newsletter*

Connect is printed 12 times per year and contains premium positions for advertisers wanting to reach some of the most influential oil & gas professionals in the world. We are still selling ads for the 2013-2014 program year, and our ad sizes have been updated. Please visit the SPEGCS website for more information regarding ad pricing and specifications.

**IF YOU'D LIKE TO PLACE AN AD IN THE  
SPE-GCS NEWSLETTER OR WEBSITE  
PLEASE CONTACT:**

*Pat Stone, Star-Lite Printing, Inc*  
281-530-9711  
starlite1@sbcglobal.net



NON-PROFIT  
ORGANIZATION  
U.S. POSTAGE  
PAID  
PERMIT NO. 6476  
HOUSTON, TX

SOCIETY OF PETROLEUM ENGINEERS  
GULF COAST SECTION

10777 Westheimer Road  
Suite 1075  
Houston, TX 77042

## CALENDAR

August 2013

Sunday	Monday	Tuesday	Wednesday	Thursday	Friday	Saturday
					1	2
				Board Of Directors Mtg.		3
4	5	6	7	8	9	10
					SPE-Gulf Coast Section Kick-Off Mtg.	
11	12	13	14	15	16	17
			Deepwater Technical Symposium & Exhibition	Deepwater Technical Symposium & Exhibition		
18	19	20	21	22	23	24
			Business Development Completions & Production			
25	26	27	Young Professionals	28	29	30
						31