



Gulf Coast Section

JULY  
2013

# CONNECT

SPE GULF COAST SECTION NEWSLETTER

## Roughneck Camp

YOUNG PROFESSIONALS P.15

## Summer Series

FIVE THINGS YOU WANTED TO  
KNOW ABOUT SUBSEA  
PRODUCTION SYSTEMS

PROJECTS FACILITIES & CONSTRUCTION P.13

## 30TH ANNUAL SPE-GCSTENNIS TOURNAMENT

P.17 & 19

## 2012 - 2013 Annual Report Summary

P.6 - 10

SPEGCS.ORG



# CHAIRMAN'S CORNER

STEVE BAUMGARTNER  
2012-2013 SPE-GCS Chair

The SPE Gulf Coast Section 2012-13 program year comes to a close at the end of July. I want to personally thank each member of our Board of Directors for their service, hard work and dedication throughout the 2012-2013 Program Year. We recognize the contributions of the following Board members whose terms expire at the end of July.

#### PAST CHAIR

TECHNOLOGY TRANSFER CHAIR

YOUNG PROFESSIONALS CHAIR

DIRECTOR-AT-LARGE

DIRECTOR-AT-LARGE

DIRECTOR-AT-LARGE

HIEP VU

RUSS NEUSCHAEFER

SANDEEP PEDAM

MARISE MIKULIS

STEVE TURK

JEFF WHITTAKER

KOSMOS ENERGY

SCHLUMBERGER

CONOCOPHILLIPS

BAKER HUGHES

WEATHERFORD

WELLTEC

The SPE-GCS Board of Directors recently updated the Gulf Coast Section Strategic Plan. The 2013 Strategic Plan addresses four main areas:

**PROFESSIONAL DEVELOPMENT FOR MEMBERS:** Our Section hosts meetings, continuing education activities, workshops, symposia and conferences to provide opportunities for members to keep their technical skills current and provide forums for exchanging ideas. This year, a group of volunteers came forward with a plan and formed the Research and Development Study Group, which increases the total number of study groups in our Section to 15. Our Board also formed an Inter-Society Liaison Committee under Technology Transfer this year. The committee has recently become a member of the Research Partnership to Secure Energy for America (RPSEA) and will coordinate with study groups and program chairs to let them know of topics and speakers that may be of interest to their events.

**INVESTMENT IN COMMUNITY:** The future of our industry depends on a supply of highly skilled individuals who are drawn to the energy industry. We support programs that make math and science interesting and exciting for teachers and students. Our future depends on the general public and their elected representatives understanding our industry and the people who work in it. A total of 27 scholarships were awarded for incoming freshman this year.

**MEMBERSHIP SUPPORT:** The section strives to serve its membership and it's run entirely by members who volunteer their time and talent. Our strategy is to keep the SPE Gulf Coast Section as the leading energy industry organization in the Houston area. Within the SPE family, we strive to be the most effective and innovative Section. Two major projects were completed this year. First, we introduced a new format for our printed newsletter, *Connect*, and increased publication to 12 issues. Second, we updated our section website, [www.spegs.org](http://www.spegs.org), which contains information about our section activities, events and programs.

**ADMINISTRATIVE AND FINANCIAL GOVERNANCE:** The Section is a non-profit entity and is under the direction of the Board of Directors. Governing documents are reviewed on a periodic basis to ensure sound control, and financial and legal management for the Section.

I want to thank the many volunteers in the Gulf Coast Section who have been focused on supporting this organization. These volunteers exemplify the understanding of the formula for success: attitude, skill and character. Please welcome Mike Strathman, Chair of the SPE-GCS Board of Directors for the 2013-2014 Program Year. We look forward to your comments and suggestions. My email address is [sbaumgartner@marathonoil.com](mailto:sbaumgartner@marathonoil.com).

# FEATURES

July 2013



**ROUGHNECK CAMP**  
*Young Professionals Thursday, July 25, 2013*



**30TH ANNUAL SPE-GCS  
TENNIS TOURNAMENT**  
*Thursday & Friday, September 19 - 20*

## ABOUT THIS ISSUE

For the first time in the history of the SPE-GCS newsletter, we are issuing a twelfth issue during the month of July. As our very first July issue, we would like to thank all our featured advertisers who have supported us for 10+ years. These advertisers make our publication possible and the money raised through this publication goes towards the many scholarships and programs that SPE-GCS provides to its members and the community it serves. In addition, we'd also like to thank all our newest advertisers who have joined us over these past few years. As our publication continues to grow, we hope that you, as a reader, will continue to support these businesses.

## STUDY GROUPS

**PROJECTS, FACILITIES &  
CONSTRUCTION  
JULY**

*Summer Series: Five Things you Wanted  
To Know About Subsea Production Systems*

P. 13

## MORE

**2012 - 2013  
ANNUAL REPORT SUMMARY**

P. 6

**EVENT RECAP**

*Sporting Clays Tournament, Annual Awards  
Banquet, & SPE Technology Symposium*

P. 20 - 24

## IN EVERY ISSUE

**SPE-GCS MEMBERSHIP REPORT**  
*May 2013*

**VOLUNTEER SPOTLIGHT**  
*Shivkumar Patil*

P. 5

**SPE GULF COAST SECTION  
DIRECTORY**

P. 26

THU  
July 11

7:30 AM TO 10:30 AM

## BOARD OF DIRECTORS MEETING

**LOCATION**  
*SPE Houston Office  
10777 Westheimer Rd.  
Suite 1075  
Houston, TX 77042*

**EVENT CONTACT**  
*Sharon Harris  
713-457-6821 EXT. 821  
713-779-4216 FAX  
sharris@spe.org*

PREMIER INDUSTRY EVENTS DEVOTED TO RAPIDLY EMERGING TECHNOLOGY

# FRAC SCHOOL

Oklahoma City, June 24th-28th  
&  
Houston, Sept. 9th-13th

You are invited you to attend our state-of-the-art, week-long course on hydraulic fracturing. Best known for a balanced presentation of the theoretical and the practical, Frac School provides a unique learning experience.

The class is an introduction to hydraulic fracturing. This course is ideal for reservoir, production and operations engineers serving on multidisciplinary asset teams. Frac School is the course of choice for both the engineer with less than 5 years experience in fracturing or those who just need a refresher.

Learn about our other events:  
[www.petroleumetc.com](http://www.petroleumetc.com)

Are you having **EAGLE FORD PROBLEMS?**

No problem for Signa.

Know what to expect...

- Knowledge
- Feasibility
- Engineering

...Expect what you know

- Management
- Execution
- Analytics

Over 2 Million feet of Eagle Ford experience  
→ IMPROVED ROI  
→ MINIMAL NPT  
Drilled one foot @ a time

**Signa** Professional Engineers  
Customer Satisfaction  
Contact: Dave Roseland  
281.774.1026

Signa Engineering Corp.  
Houston, TX USA  
[www.signaengineering.com](http://www.signaengineering.com)

## COMPLETING OFFSHORE?

COMPLETE WITH THE LEADER.



ENSCO 8502

The deeper the water, the greater the challenges.

No service company has taken on more deepwater challenges than Halliburton—the completions leader worldwide.\* Indeed, our enhanced completion technology enables us to develop custom solutions, integrate across services and disciplines to reduce NPT, decrease total costs, and make sure each completion is as efficient as it is effective.

What's your offshore completion challenge?

To schedule a meeting, or receive more information, go to  
[Halliburton.com/Complete1](http://Halliburton.com/Complete1)

© 2013 Halliburton All rights reserved. Photo courtesy of ENSCO.  
\*Based on Spears & Associates Oilfield Market Report.

Solving challenges.™

**HALLIBURTON**

# SPE-GCS MEMBERSHIP REPORT

May 2013

MAY 2013

Total: 14,391

YP: 2,930

APRIL 2013

Total: 13,947

YP: 2,754

	MAY		APRIL	
	Total	YP	Total	YP
<b>SPE-GCS Members</b>				
New Members	212	87	206	84
Transferred to Section	13	5	13	7
Transferred out of Section	N/A	N/A	N/A	N/A
Unpaid	2,670	870	2,817	921
<b>Student Members</b>	<b>Paid</b>	<b>Unpaid</b>	<b>Paid</b>	<b>Unpaid</b>
Texas A&M	541	246	518	256
UH/Rice	310	96	263	102
HCC	47	13	45	13
Total	898	355	826	371
Total Paid/Unpaid	15,289	3,025	14,773	3,188
% Paid	83.5%		82.3%	



## VOLUNTEER SPOTLIGHT

### Shivkumar Patil

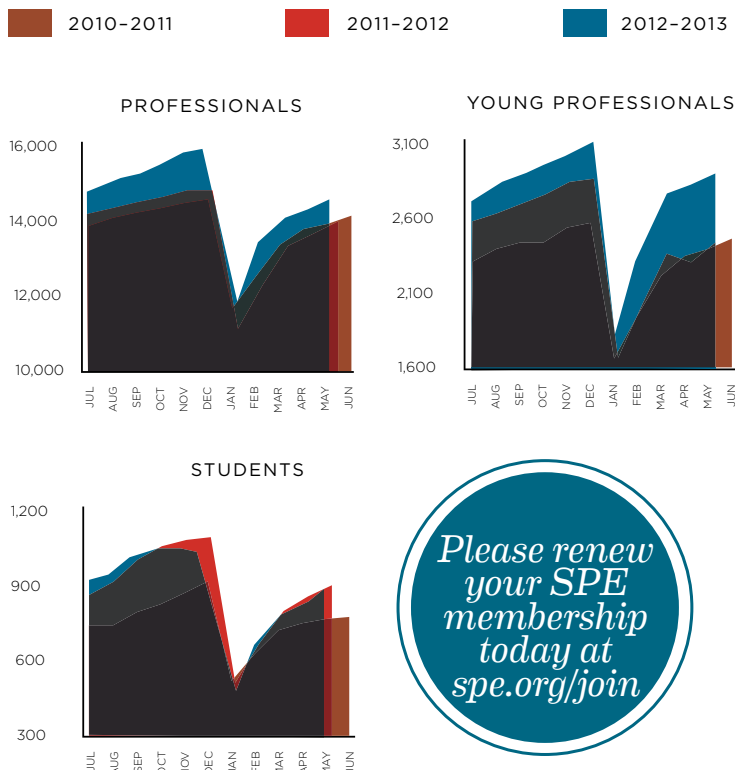
Shivkumar “Shiv” Patil, a Flow Assurance Engineer at Aker Solutions, received a Gulf Coast Section Service Award in 2012 and a Regional Service Award in 2013. Shiv has been serving on the YP board for the past three years. He was Communications Chair of the Young Professionals (YP) Committee for the first two years, responsible for promoting YP events through social media. This year, he is the YP Community Outreach Coordinator, organizing volunteer community service events and back-to-school supply drives. He was also a volunteer facilitator at the Cross-Generational Workshop held at the 2012 SPE Annual Conference & Exhibition in San Antonio and spoke about subsea technology, petroleum engineering, etc. at high schools in Houston area.

Shiv earned his Bachelor of Engineering degree from the University of Pune in India, then got his MS in Petroleum Engineering at the University of Alaska in Fairbanks, where he was active in the SPE and AADE student chapters and served as a research assistant at the Institute of Northern Engineering. He presented his work at the 2008 SPE International Petroleum Technology Conference in Kuala Lumpur in a paper (IPTC 12004) titled “Low Salinity Brine Injection for EOR on Alaska North Slope.”

He came to Houston in 2008 and joined Reservoir Description Services as a Reservoir Engineer. Soon thereafter, he joined Aker Solutions as a Subsea System Engineer. Recently he has focused on subsea pump and separator design and providing boosting equipment and simulation studies for flow assurance.

Now that Shiv is “graduating” from the YP Board, he has offered to help our Section Webmaster, Subash Kannan, to do the e-newsletter blast and the monthly study group email blasts.

“SPE presents an amazing platform to find friends, reach out to the community, get a better understanding of our oil and gas industry, learn new skills, and even advance my career. It feels great to be a part of SPE,” Shiv says.



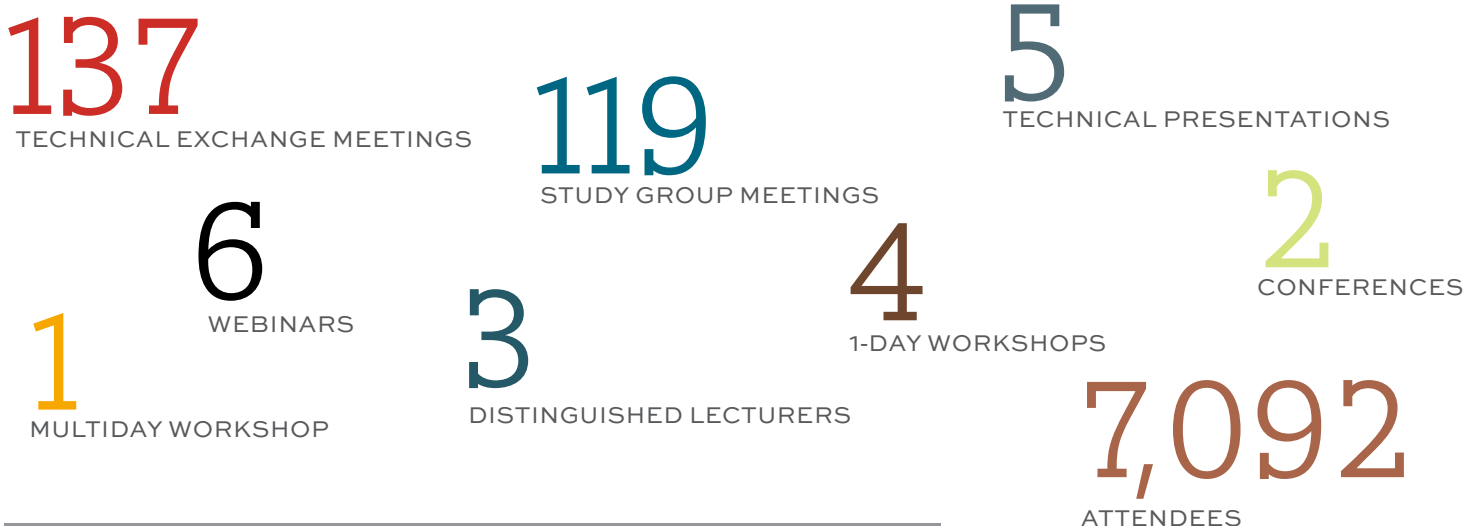
Please renew  
your SPE  
membership  
today at  
[spe.org/join](http://spe.org/join)

2012-2013

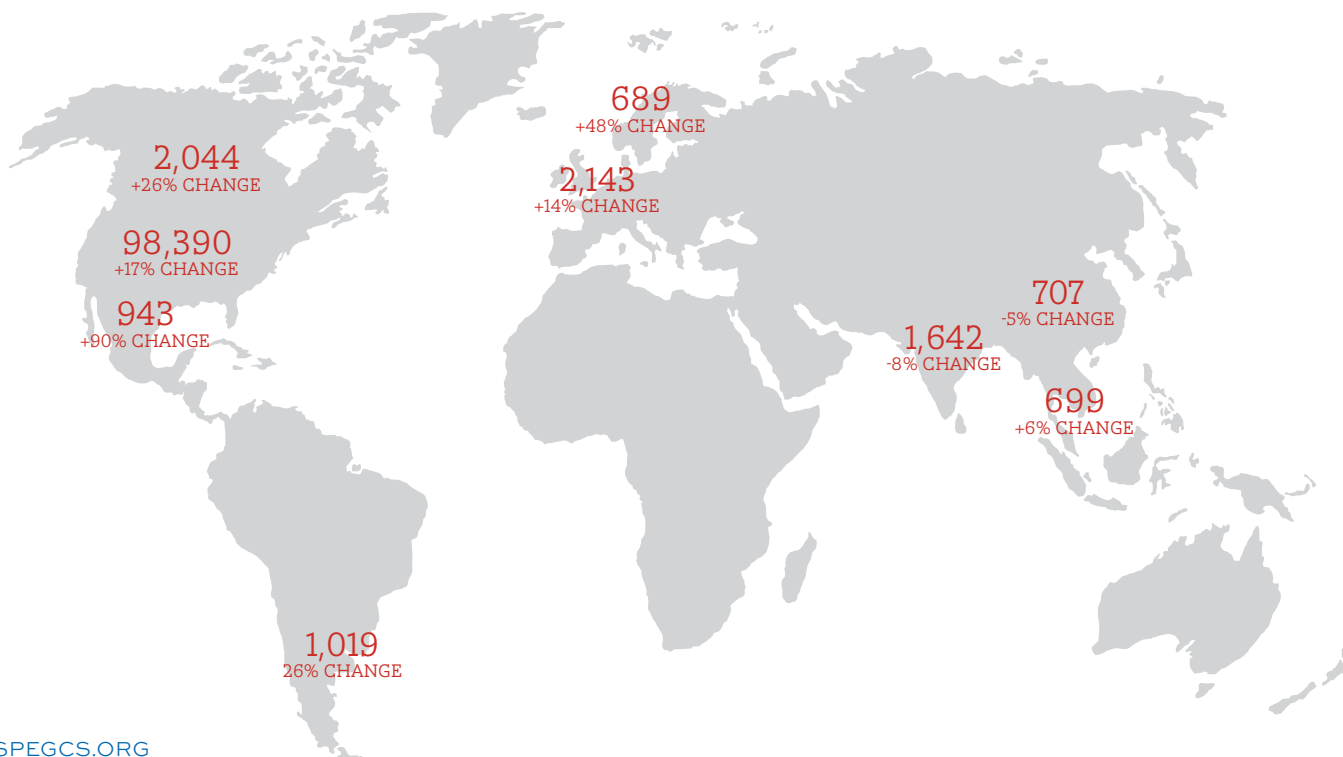
# ANNUAL REPORT SUMMARY

IN THE FOLLOWING SUMMARY OF THE SPE-GCS ANNUAL REPORT, WE ARE MEASURING OUR SUCCESSFUL YEAR "BY THE NUMBERS." FROM EDUCATION AND COMMUNITY OUT-REACH TO OUR MEMBERSHIP, OUR NUMBERS ARE UP. IN FACT, WE HAD A RECORD YEAR IN TERMS OF MEMBERSHIP! WE'VE HAD AN IMPRESSIVE INCREASE IN WEB TRAFFIC, ESPECIALLY FROM OTHER COUNTRIES, AND OVER THE LAST YEAR, WE'VE IMPLEMENTED A NUMBER OF NEW WAYS TO CONNECT OUR MEMBERSHIP. CHECK IT OUT.

## SPE-GCS MEETINGS BY THE NUMBERS



## SPE-GCS WEBSITE VISITORS BY THE NUMBERS



## SPE-GCS YOUNG PROFESSIONALS



## SPE-GCS COMMUNITY OUTREACH

# INNOVATIVE TECHNICAL DISSEMINATION

OVER THE LAST 12 MONTHS, OUR SECTION IMPLEMENTED A NUMBER OF NEW WAYS TO MOVE INFORMATION AND CONNECT OUR MEMBERSHIP.

### 1 SMART PHONE APP

In 2013, the Young Professionals Committee introduced the YP Mobile Application platform for the iPhone, Android, Blackberry, and iPad. This innovative app project will make it easier for our members, young and young at heart, to utilize their smart phones and mobile devices to stay current with the events and activities that the YP are organizing. The app is currently underway and will be tested before being rolled out to the general membership.

### 2 HISTORICAL DISSEMINATION THROUGH MENTORING

We held a kickoff meeting on Oct. 2, 2012, at the SPE Houston office training room for a new mentoring program where we matched Young Professionals with Legion of Honor and 25-Year Club members. We had 12 YPs and three "seasoned" members attend. As this was the inaugural program, we introduced the concept of the program and have planned to capture the many amazing stories of the older members, either in book form or on YouTube. We were able to sign up volunteers for the various aspects and responsibilities and we are looking for a new champion, as our first leader is on maternity leave. If you have an interest in this initiative, please contact the Membership Chair.

### 3 R&D STUDY GROUP

The Gulf Coast Section added a new study group to disseminate information to members of our Research and Development community. This new study group was formed in Fall 2012 and has had a series of successful luncheons in the first quarter of 2013. Topics for the luncheons have ranged from technology venture investment to managing a R&D organization to the Deepstar organization. The new R&D Study Group has gotten off to a strong start, and we look forward to the group's continued success in reaching this sector of our industry.

### 4 SOCIAL MEDIA

With the enthusiasm of our very own members, a new Social Media Coordinator volunteer position was created to help monitor and drive adoption of social media messaging as a means of communication, announcements and sharing of information. Referrals from Social Media are increasing (Facebook and LinkedIn) in a strong upward curve. The Section actively uses LinkedIn, Facebook, Google+, and Twitter as another means to connect with its membership. Visit our website at [www.spegcs.org](http://www.spegcs.org) to find all our social media handles.

# INNOVATIVE SECTION OPERATIONS/SUSTAINABILITY

OVER THE LAST 12 MONTHS, WE FOUND NEW WAYS TO OPERATE AND SUSTAIN THE SECTION FOR FUTURE GROWTH.

1

## YOUNG PROFESSIONALS COMMITTEE

The GCS YPs implemented a succession planning initiative that provided a more sustainable structure by ensuring continuity from year to year with tiered levels of involvement from volunteer to committee coordinator to YP board member to officer and job descriptions compiled for each position. Prior YP Board Directors were for 1-year terms with all members rolling off each year. This would produce a completely new YP Board with no continuity in planning the big events. The new succession plan now involves 2 to 3 year assignments within leadership positions in order to build from lessons learned. This succession planning initiative was first created in the 2011-2012 program year, thus making the 2012-2013 program year the inaugural year. In addition to implementing the succession plan, the Section Bylaws were amended to make the YP Chair and Education Chair members of the Section Board of Directors.

This year, the GCS advertised and highlighted the Delta Section's annual Deepwater Technical Symposium.

2

## NEWSLETTER INITIATIVE

This program year, the monthly newsletter was redesigned and rebranded with positive response from GCS membership in regards to improvements with color, copy and content. The hope was to set the newsletter up for future growth. The newsletter is now branded as the *Connect* to tie in the section's mission of connecting members and transferring information. In addition to rebranding and redesigning the section's newsletter, we are now printing a twelfth issue for the first time in the history of the newsletter. This twelfth issue will be a recap of events and photos from the section over the program year and will also feature summaries of key items from the section's annual report.

The YP section has been actively involved in helping other regional YP committees set up PetroBowl style competitions at the local level. The section also generates interest among SPE Student Chapters by helping them attend SPE-GCS YP events.

3

## WEBSITE INITIATIVE

The new website software upgrade, developed specifically for the Section by Schipul, has the capabilities that enable handheld devices like tablets and smartphones to access the information on the Section's website. Having this functionality will carry the Section into the future by serving tech-savvy members.

GCS members are involved in all facets of SPE activities, including participating in SPE committees and subcommittees at the Society level and the SPEI, such as the Membership Workshop and Section Officers Workshop. We actively share our best practices with other sections.

4

## YP STUDENT CHAPTER LIAISON

The GCS YPs have decided to add a Student Chapter Liaison position. This position will join the 2012-2013 YP Board, support the Membership and Networking Chairs, and be a student from a local SPE student chapter. The goal of this initiative is to identify better ways to incorporate Student Chapters into YP activities and provide a single contact for Student Chapters to connect with the GCS YP Board.

We continue to update our Volunteering webpage and educational opportunities are listed as they become available. A list of volunteers is sent to Membership Coordinator Jeanne Perdue from SPEI, and she places them in appropriate volunteer positions, both at the Section and International levels.

## OUTREACH & SHARING

THE GCS WORKS HARD TO FIND OPPORTUNITIES FOR OUTREACH & SHARING TO OTHER SECTIONS WITHIN THE SPE FAMILY.



# OUTREACH & SHARING CONT.

NOT ONLY DOES THE SECTION WORK WITH OTHER SECTIONS IN SPE, BUT WE ALSO WORK WITH OUTSIDE PROGRAMS TO CONTINUE BUILDING RELATIONSHIPS THAT ARE BENEFICIAL TO US AND TO THE ADVANCEMENT OF OUR INDUSTRY. WHILE WE HAVE CONTINUED TO PARTNER WITH EDUCATION GROUPS THAT FOCUS ON STEM (SCIENCE, TECHNOLOGY, ENGINEERING AND MATHEMATICS), WE HAVE ALSO ADDED A NUMBER OF NEW OUTREACH PROGRAMS THIS YEAR.

Offshore Energy Center: Implement the Energy4Me kit into the traveling classroom exhibit, Knowledge Box (K Box) targeting Grades 6- 12.

Study Group Luncheon (Permian Basin): Invite high school students to a study group luncheon and lecture.

The Section will formally adopt a policy on Inter Society Cooperation at the June meeting and promote it to the section. That policy will remind all our members that working with other associations in the industry help with technology transfer and leverages resources for community services.

In an effort to broaden the reach of a local professional organization, the Section has recently printed a promotion for an event for the Houston Area Professional Landmen in our monthly newsletter, the *Connect*.

The Gulf Coast Section is working with RPSEA (Research Partnership to Secure Energy for America) to sponsor local events of joint interest to our membership.

# SPE-GCS PLANNING

LONG-TERM GOALS: THE SPE GULF COAST SECTION STRIVES TO CONTINUE BEING A PROVIDER OF WORLD-CLASS DISSEMINATION OF TECHNICAL INFORMATION RELATED TO THE PETROLEUM INDUSTRY WITHIN OUR SECTION MEMBERSHIP AND LOCAL COMMUNITY. LONG-TERM GOALS INVOLVED ARE DIVIDED INTO THREE MAIN AREAS:

## OPERATIONAL EXCELLENCE

TECHNICAL PROGRAMMING, EDUCATION AND COMMUNITY OUTREACH, COMMUNICATIONS, AND SOCIAL

## FINANCIAL EXCELLENCE

GOVERNANCE AND FISCALLY RESPONSIBLE STEWARDSHIP

STRENGTHENING OUR RELATIONSHIP WITH SPE INTERNATIONAL COLLABORATIONS AND KNOWLEDGE TRANSFER

In addition, the Board of Directors updated the Section's Strategic Plan (last updated in 2005). Section Vice Chairman, Mike Strathman, prepared a draft incorporating the previous Section Strategic Plan and the 60-page SPEI Strategic Plan. The Board approved the new 4-page 2013 SPE-GCS Strategic Plan at the April 11, 2013 Board Meeting. The Board of Directors approved a Memo of Understanding between SPE-GCS and SPE International for long-term SPE-GCS administrative support at the February 14, 2013 Board Meeting.

www.**GeoSteering**.com

Specialists in geosteering with LWD

**Real-time and 24 / 7**

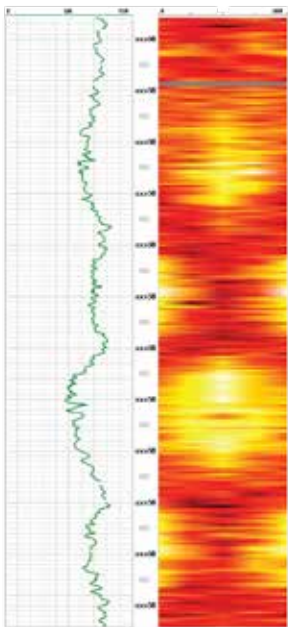
GR to Quad-Combo  
Image Interpretation  
Resistivity Modeling

**USA**

Bakken & Three Forks,  
Niobrara, Eagleford,  
Granite Wash, Woodbine,  
Permian, Haynesville,  
Barnett, Woodford, etc

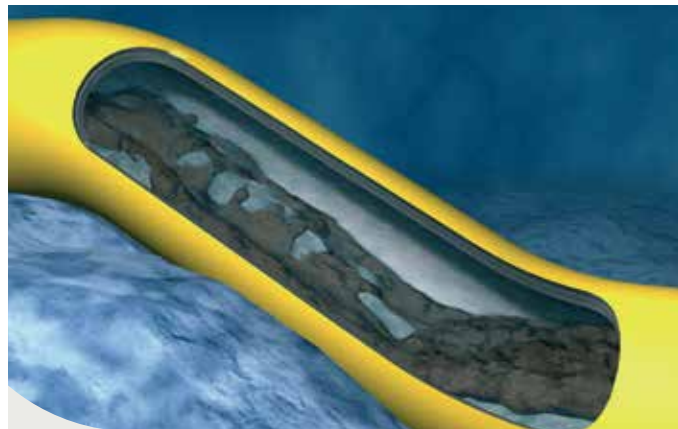
**International**

Middle East, Europe, Latin  
America, China etc.



Real-time Log from Eagle Ford Geosteering Job

**281-573-0500**  
**info@geosteering.com**



**World leaders in dynamic modelling**

SPT Group is the world leader in dynamic modelling for the oil and gas industry providing a range of software and consulting services within multiphase flow and reservoir engineering. We develop and market OLGA®, Drillbench®, MEPO® and OLGA® Online, products and solutions that maximize value for engineering and operations through the entire field development lifecycle.

The highly skilled professionals of SPT Group have a common goal of bringing state-of-the-art competence and technology to our customers.

www.sptgroup.com

**SPT GROUP**  
A Schlumberger Company

Society of Petroleum Engineers  
**TRAINING COURSES**

*Setting the standard for technical excellence.*

**Relevant. Reliable. Rewarding.**

Courses are available for all levels of professionals.

Attend an SPE training course to learn new methods, techniques, and best practices to solve the technical problems you face each day.

Find out more at [www.spe.org/training](http://www.spe.org/training).



Get the current schedule—wherever you are. Scan here with a QR code reader.

Society of Petroleum Engineers



# SHORT-TERM GOALS

## TECHNICAL PROGRAMMING

There are three main areas within technical programming: (1) Study Groups, (2) workshops, seminars and symposia, and (3) technology transfer. General goals for the Study Groups are to maintain average or above average attendance by providing relevant technical content while maintaining a breakeven net income. To date, our 15 various Study Groups (including Research & Development Study Group) have collectively achieved those goals while performing slightly better than breakeven. The 4 “One-Day” workshops along with the 3 Multi-Day/Conferences hosted by our Section continue to be strong in attendance based on the technical content delivery to our membership. Long-standing programs such as PetroBowl and Oil Patch Orientation continue to be staples of the Gulf Coast Section. Goals for technology transfer were to broaden webinars. Based on the successful pilot program launched in 2010, the GCS has had webinar capabilities during 6 Study Group presentations this program year. The Section continues to use webinars in our Board of Directors meetings to facilitate more functional interaction from our remote board members.

## EDUCATION & COMMUNITY OUTREACH

Short-term goals for Education and Community Outreach involved maintaining programming excellence while providing better alignment and integration of 15 existing programs through the application of ‘smart giving’. The fifteen programs were: GCS merit-based scholarships, SPEI Foundation scholarships, University of Houston professor endowment, Houston Community College petroleum engineering technology scholarships, Communities in Schools Houston ‘at-risk’ scholarships, a Lone Star College scholarship, Exploring Earth Sciences program, Cypress Fair Pals, Science fairs, Boy Scout fairs, merit badge fair, Girls Exploring Math and Science, scholarships for the Collaboration in Houston for the Advancement of Science and Engineering (CHASE), high school recruiting fairs, and the Magic Suitcase. Total giving to these programs in the past have averaged over \$400,000/year. The section has begun a focused strategy to maintain a balanced level of education and community contribution while maintaining the Section’s financial health. Net Asset Forecasting regularly monitored by the Treasurer and reviewed monthly by the Board allows the Section’s plan spend of capital to stay within the band of financial health. Scholarship and program consolidations have been implemented in all categories with the intent of focusing efforts on programs that reach out to potential engineering students.

## MEMBERSHIP

Membership goals focused on “Building Bridges.” The first goal was to bridge the chasm in membership that happens every year, called the January Plunge, when 4,000 of our members forget to renew their dues. Membership Builder will continue to help us bridge this chasm better next year. The second bridge goal was to welcome new members and invite them to a meeting, welcome those new to Houston via the SPE Auxiliary, and welcome new volunteers by placing them on an appropriate study group or committee. The latter two goals were met. The third bridge was to link Legion of Honor members with YPs. This remains a longer-term goal as we are still looking for a volunteer to organize this effort. The fourth bridge was to strengthen the link between the Section and the three Student Chapters: Texas A&M, Rice/UH, and HCC. The Section has committed to supporting the division of the Rice/UH Student Chapter into separate Rice and UH Student Chapters in 2013-14. In addition, we will have an academia member, Dr. John Lee from the University of Houston, on our Board in 2013-14. Lastly, we set a goal of reaching an all-time record for membership, and we achieved that: 15,517 members!

## gyro/data

- » High Accuracy Gyro Wellbore Surveying and Guidance
- » Rotary Steerable Automated Drilling Systems
- » Monitor SWD™: Survey While Drilling (Inc, Az, TF)
- » Mud Motor Services and Rentals

Gulf Coast Sales and Operations 24 hour contact

**(281) 213-6300 / (832) 667-9450**

or see <http://www.gyrodata.com/>



## INTEGRATED PRODUCTION SERVICES



Coiled Tubing & Nitrogen  
Eline & Slickline  
Snubbing  
Plunger & Gas Lift  
Flowback & Production Testing  
Pressure Testing & Nipple Up-Down

[www.ipsadvantage.com](http://www.ipsadvantage.com)

TETRA Technologies, Inc.



## 30 Years...Providing Solutions to the Oil & Gas Industry

- Well Testing
- Frac Flow Back
- Sand Management
- Early Production Facilities
- Data Acquisition Systems
- Production Enhancement
- Wellhead Compression
- Completion Fluids
- Casing Clean-Up Tools
- Fluid Filtration Services
- Frac Water Management
- Cased-Hole Wireline Services



tetrathec.com

Focused on Energy. Dedicated to Service.

© 2010 TETRA and the TETRA logo are registered trademarks of TETRA Technologies, Inc. All Rights Reserved.

## Control With Confidence

### Engineered Prevention, Response & Results

Whether onshore, offshore or underground, Cudd Well Control has complete solutions for well planning and intervention. As a Qualified Third Party, we provide the necessary oversight to help you meet NTL-05 and NTL-06 requirements. Our team of engineering experts will assist you with a wide range of services, from rig inspections and blowout contingency planning, to specialized training and modeling. With a proven track record of success confronting blowouts and problem wells in any environment, Cudd Well Control is the preferred choice.

#### Well Control Services:

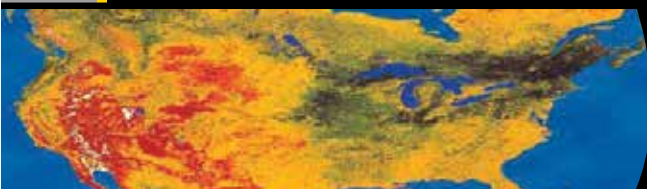
- Oil Well Firefighters and Blowout Specialists
- Well Control & Kick Resolution
- Underground Blowouts
- Dry Ice/Cryogenic Freeze Services
- Hot Tap and Valve Drilling Services
- Engineering Services
- Rig Inspections
- Drilling Plan Enhancements
- Blowout Contingency Planning
- Specialized Training
- Relief Wells
- Kick Modeling
- Gas Dispersion Modeling
- BOEMRE Compliance



www.cuddwellcontrol.com • +1.713.849.2769

## PHDWIN™

Integrated Economics & Decline Curve Software



EVEN MORE POWERFUL WITH

## PHDRMS™

Intuitive Interface  
Affordably Priced  
60-Day Money-back Guarantee

Schedule an **online**  
presentation  
**TODAY!**

POWERFUL FLEXIBLE SECURE

TRC CONSULTANTS, LC  
888.248.8062 | www.phdwin.com

Intertek

Westport Technology Center

### Providing Expertise in Reservoir Characterization and Optimization

#### Services include:

- PVT and Fluid Phase Behavior
- Routine and Special Core Analysis
- Enhanced Oil and Gas Recovery
- Geochemistry
- Petroleum Geology and Petrophysics
- Unconventional Reservoirs
- Drilling Fluids
- Flow Assurance
- Oilfield Corrosion
- Petroleum Microbiology

Intertek  
Westport Technology Center  
6700 Portwest Drive  
Houston, Texas  
713.479.8400  
westportservices@intertek.com

www.intertek.com



# PF&C Summer Series: Five Things You Wanted To Know About Subsea Production Systems

4:00 PM - 5:30 PM

As offshore discoveries go deeper and into new environments, producing these resources becomes a more complex challenge. Stakeholders must give consideration to numerous factors, many of which can make or break the economics of a development. Subsea is one of the key considerations in development and production of hydrocarbon resources and becomes even more critical as the economics escalate as time passes. Subsea concepts and solutions have seen considerable advancement in the application of innovative ideas and technologies to address production challenges.

Five topics, presented by industry-recognized experts, have been selected to provide the attendee with a general understanding of the challenges that face subsea production and the methods implemented to address these challenges.

Each session is scheduled as a one-hour presentation followed by a 30-minute Q&A session. We expect a large turnout, so please book early and try to attend all five. We appreciate the support of our SPE-GCS members and we look forward to seeing you there you there.

## Abstract

**SERIES I:** FMC will be demonstrating the 3D software that the company uses to present an introduction to subsea hardware and basic field development. The software tool enables the audience to fly in and around all the various types of hardware normally supplied by FMC. There will be discussions on vertical versus horizontal tree selection, the role of the subsea tree and how the auxiliary systems are designed to enable ease of installation and provide high availability.

**SERIES II:** Cameron will address concepts associated with increasing recovery from subsea reservoirs. These concepts will be centered on subsea boosting options including multiphase pumping, single phase pumping, gas-liquid separation and hybrid boosting, large gas field boosting using dry gas compressors and wet gas compression. We will also look at the pros and cons of carrying out water injection subsea and describe recent produced water separation and injection initiatives.

**SERIES III:** INTECSEA will provide an overview of deepwater floating production systems used by the oil and gas industry. A summary of the main characteristics of different floating production system types will be presented along with the pros and cons of each system. We will also present recent innovations and future challenges to the floating production systems. Methodologies on how to select a floating production system for oil and gas field development will be also discussed.

**SERIES IV:** Assured Flow Solutions will be discussing flow assurance issues and various methodologies for mitigating the risk of permanently or temporarily losing production. Company experts will cover hydrate plugging, wax deposition, corrosion/erosion, scale deposition, asphaltenes and others. The presenter will provide insight into various methods of mitigation.

**SERIES V:** Technip will go into the design and installation of umbilicals and flexible pipelines. This lecture will take advantage of the considerable experience of Technip in the design and installation of these types of systems and the options available with regard to installation hardware.

## Event Info

### DATES

*Series I - July 3rd*  
*Series II - July 10th*  
*Series III - July 17th*  
*Series IV - July 24th*  
*Series V - July 31st*

### LOCATION

*Technip Energy Tower 1*  
*11700 Katy Freeway*  
*Houston, Texas 77079*

### CONTACT

*Brad Nelson*  
*832-230-8246*  
*bnelson@maxoilsolutions.com*

### COST

*Member & Non-Member \$45*

# PetroSkills®

## Build Your Foundation

To maximize convenience, PetroSkills will deliver its most popular courses multiple times in the Houston area over the next few months. These courses build a firm foundation and a solid platform for careers in their disciplines.



- **Basic Petroleum Engineering Practices – BE:**  
July 8-12, 9-13 Sept, Nov 18-22
- **Production Operations 1 – P01:**  
June 10-21, Sept 16-27, Dec 2-13
- **Applied Reservoir Engineering – RE:**  
June 17-28, July 15-26, Nov 4-15, Dec 2-13
- **Completions and Workovers – CAW:**  
June 24-28, October 7-11, November 11-15
- **Evaluating and Developing Shale Resources – SRE:**  
May 20-24, August 26-30

For details on these or our other 250 sessions in the Gulf Coast, contact Patty Davis, (832) 426-1203 or [patty.davis@petroskills.com](mailto:patty.davis@petroskills.com), or see details and full selection at [www.petroskills.com](http://www.petroskills.com)



# ACTive

IN-WELL LIVE PERFORMANCE

© 2013 Schlumberger

# FRAC or FICTION

**FACT:** No foreign proppant can match CARBO's quality.

CARBO Ceramics® has maintained the highest standards of proppant quality from the mine to the wellsite for more than 30 years. Don't put your multimillion dollar investment at risk with marginal alternatives – trust CARBO.



Test your knowledge  
**FracOrFiction.com**  
Or text\* CARBO to 99000

## Real-time CT services help Saudi Aramco boost production by 1,000 bbl/d.

Saudi Aramco used ACTive\* real-time coiled tubing services to perform a rigless water shutoff treatment in a nonproductive horizontal well. Accurate plug and packer placement isolated the water-producing zone, decreasing water cut by 50%, increasing oil production by 1,000 bbl/d, and cutting completion time in half.

Read the case study at [slb.com/ACTive](http://slb.com/ACTive)



# THE NEXT GENERATION OF LEADERS ROUGHNECK CAMP

Roughneck Camp (RNC) is an annual one-day conference focused on welcoming students, interns, technical professionals and new members to the oil and gas industry.

- Career Development Sessions
- Presentations by Industry Leaders
- Networking Opportunities
- Technical Sessions
- Panel Discussion

## WHO

Students, Interns and Young Professionals with less than 5 years of industry experience

## REGISTRATION

[www.spegcs.org/roughneck-camp/](http://www.spegcs.org/roughneck-camp/)

## LOCATION

Anadarko Petroleum Corporation  
1201 Lake Robbins Drive  
The Woodlands, TX 77380

## RNC CO-CHAIRS

John Jackson  
713-998-3121  
jjackson@reclaim.com

Mudassir Siddiqui  
713-614-5240  
msiddiquit@gmail.com

## MEMBERS

\$50 before 6/30/13, \$60 after

## NON-MEMBERS

\$60 before 6/30/13, \$70 after

## EVENT SPONSORS

Diamond



Platinum



Gold



TIME	SPEAKER	TOPIC
7:00 AM		Check-in/ Registration
8:00 AM	Mudassir Siddiqui, RNC Co-Chair	Opening Remarks
8:10 AM	Chuck Meloy, Senior Vice President, Anadarko	Keynote
8:45 AM	Laurent Poncent, Strategy Manager, Statoil	Impact of the Shale Revolution on the E&P Leadership Model
9:20 AM	Claude Thorp, Vice President, Hamilton Group	The Importance of Image Management
9:55 AM		Ice Breaker 1
10:30 AM	David Strople, Exploration Land Manager, Conoco	The Role of the Landman in Capturing Opportunities
11:05 AM	Allen Sinor, Vice President, Baker Hughes	World of Change - Drilling
11:40 AM		Lunch (Provided by Anadarko)
12:50 PM	Open Panel Discussion	
1:25 PM	Larry Irving, Vice President, Emerson	The Past, Present, & Future of Automation
2:00 PM	Shawn Stroman, Vice President, FTS International	Fluid Systems 101
2:35 PM	Dr. Holley, Director of Petroleum Engineering, U of H	Should I go to Graduate School
3:10 PM		Ice Breaker 2
3:40 PM	Danny Brown, Maverick Basin Manager, Anadarko	Overall Energy Picture - What it is, Why, & Implications
4:15 PM	Richard Little, Vice President, EP Energy	A Market Perspective
4:50 PM	John Jackson, RNC Co-Chair	Closing Remarks
5:00 PM		Social Networking at Goose's Acre

**LUFKIN**

*Expect More*

*More* **SYSTEMS**  
*More* **SERVICES**  
*More* **LOCATIONS**



Pump jacks with legendary quality and reliability have been the reputation of Lufkin for more than 100 years. In that same tradition, Lufkin now offers more artificial lift systems, more support services and more locations to serve operators around the world. These highly engineered solutions, supported by our experienced staff, deliver optimum production from your oil and gas wells.

Now, more systems and services to meet your requirements:

- |                                 |                                 |
|---------------------------------|---------------------------------|
| <b>Field Optimization</b>       | <b>Plunger Lift</b>             |
| <b>Beam Pumping Units</b>       | <b>Gas Lift</b>                 |
| <b>Hydraulic Pumping Units</b>  | <b>Completion Products</b>      |
| <b>Progressing Cavity Pumps</b> | <b>Maintenance &amp; Repair</b> |
| <b>Reciprocating Pumps</b>      | <b>Training</b>                 |
| <b>Automation</b>               |                                 |



Scan for More Product Information

*The Energy Flows Through Us*®

LUFKIN.COM

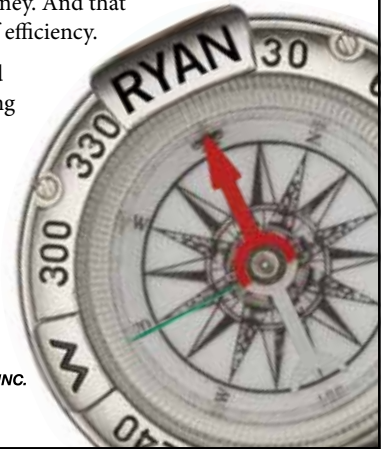
# Directionally challenged?

If your directional drilling program is more challenging than you expected, maybe you need a new directional driller. Maybe you need Ryan Directional Services, Inc.

Ryan has experience in virtually every important oil and gas shale play. We know the potential roadblocks and how to address them before they cost you money. And that takes drilling to a new level of efficiency.

Call Ryan at 281.443.1414 and see how our directional drilling program will change your experience from challenging to rewarding.

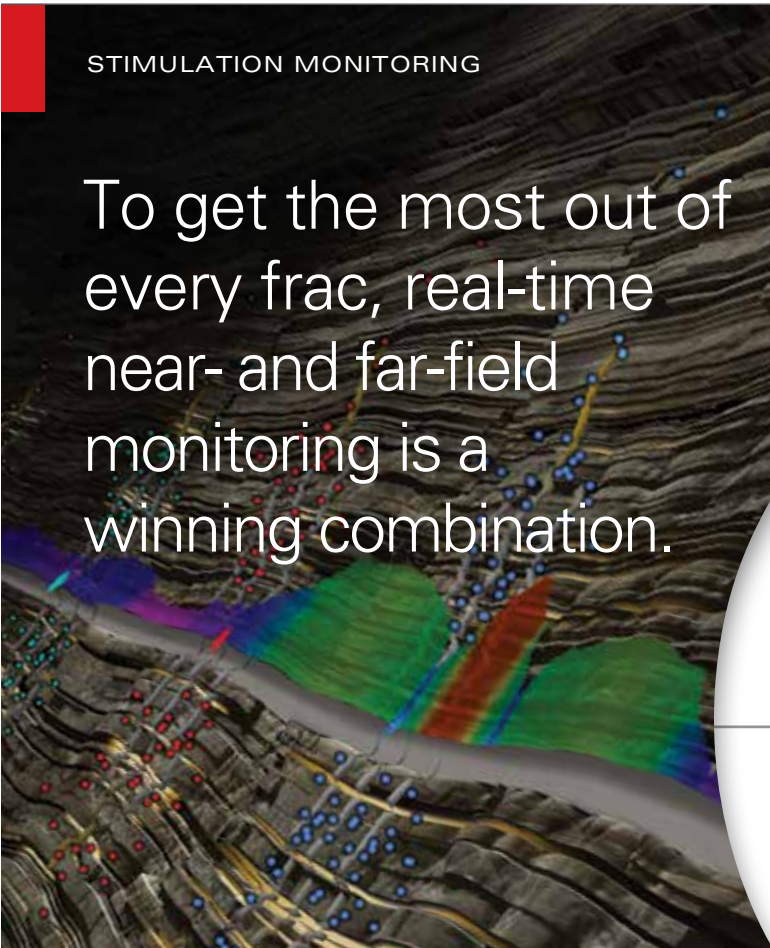
[www.nabors.com](http://www.nabors.com)



 **RYAN DIRECTIONAL SERVICES, INC.**  
A NABORS COMPANY

## STIMULATION MONITORING

To get the most out of every frac, real-time near- and far-field monitoring is a winning combination.



In unconventional plays, you're challenged by how to make more oil or gas while reducing costs and meeting environmental parameters. Halliburton has the solution: distributed temperature sensing—used in conjunction with microseismic fracture mapping—that gives operators the ability to make adjustments during a treatment to help assure every planned zone is treated.

What's *your* stimulation monitoring challenge?

For solutions, visit [www.pinntech.com](http://www.pinntech.com)

**Solving challenges.™**

 **Pinnacle**  
A HALLIBURTON SERVICE

© 2013 Halliburton. All rights reserved.



THU/FRI  
September  
19/20

THU 4:00 PM - FRI 8:00 PM

# SPE-GCS 30<sup>TH</sup> Annual Tennis Tournament

The 30th Annual Society of Petroleum Engineers Gulf Coast Section Tennis Tournament will be held on THURSDAY, September 19th & FRIDAY, September 20th at The Houston Racquet Club located at 10709 Memorial Drive in Houston, Texas. Proceeds from the tournament benefit the SPE-GCS Scholarship Fund. In combination with other section functions, there have been 20 new scholarships for incoming college freshman studying petroleum engineering, math and sciences, and 89 renewed scholarships which include sophomores, juniors and seniors with their continued education in petroleum engineering. More than \$3 million dollars in scholarships have been awarded since 1963 to students through this program.

In 2012, we had a very successful tournament with over 80 players participating. Registrations and sponsorships raised \$50,000 in revenue. After tournament expenses, net proceeds of over \$26,100 dollars were contributed to the SPE-GCS Scholarship Fund.

Sponsors are a welcome and an essential part of making this event a success. All sponsors will be recognized in the tournament program and on the sponsorship billboard that is exhibited throughout the tournament. Please see the Sponsor Form for sponsorship levels. In-kind donations for ditty bags and door prizes are also accepted.

**On behalf of the entire 2013 SPE-GCS Tennis Committee, we look forward to seeing everyone for two fun-filled days of tennis!**

## QUESTIONS

Bob Fu  
713-591-9808  
bob.fu@bp.com

Suzanne del Rosario Davis  
832-618-5282  
sdelrosariodavis@lgc.com

## START TIMES

Mixed Doubles  
Begins Thursday  
September 19th - 6:00 PM

Tournament Doubles  
Begins Friday  
September 20th - 9:00 AM

## LOCATION

The Houston Racquet Club  
10709 Memorial Drive  
Houston, TX 77024  
713-464-4811  
houstonracquetclub.com

## DEADLINE

September 13, 2013  
Participation is limited and  
entries will be accepted on  
a first-come, first-served basis

30th Anniversary

## EVENT INFORMATION

There will be two flighted round robin events:  
Tournament Doubles – Friday, September 20th  
Mixed Doubles – Thursday evening, September 19th

The tournament doubles event is open to men and women and is a combined bracket. Partners may be of the same gender or mixed.

The committee will assist players who do not have a partner for any event.

## FLIGHTING

Championship – Advanced Players  
A – Regular & Advanced Players  
B – Intermediate Players  
C – Non-regular Players & Beginners

The SPE-GCS Tennis Committee reserves the right to allocate players to a different flight if necessary. Please rank yourself on the honor system.

## WHAT TO EXPECT

Lots of tennis, meeting old friends and making new ones. Door prizes, T-shirts, awards, meals and beverages.

Thursday – Light dinner  
Friday – Breakfast, lunch and snacks  
Hit & Grab – Friday after lunch  
Award presentations, door prizes & heavy appetizers – late Friday afternoon ~ 4PM

## RULES OF ENTRY

The event is open to members, nonmembers, guests, and friends of SPE. The only restriction is that tennis professionals are not allowed.

## REGISTRATION

Thursday, September 19th - 4:00 - 6:00 PM  
Friday, September 20th - 8:30 - 9:00 AM

## IMPORTANT NOTICE

All paid participants must wear their "Name Tags" during this event to have access to the food and drinks

## ENTRY FEE INFORMATION

\$125.00 Per person - Fee covers Tournament and Mixed Doubles for an individual player.  
\$50.00 for those only playing Mixed Doubles.  
\$25.00 – Spouse/Guest (Not Playing)  
Fees are due with entry form.

## Don't put your offshore stimulation program on hold.

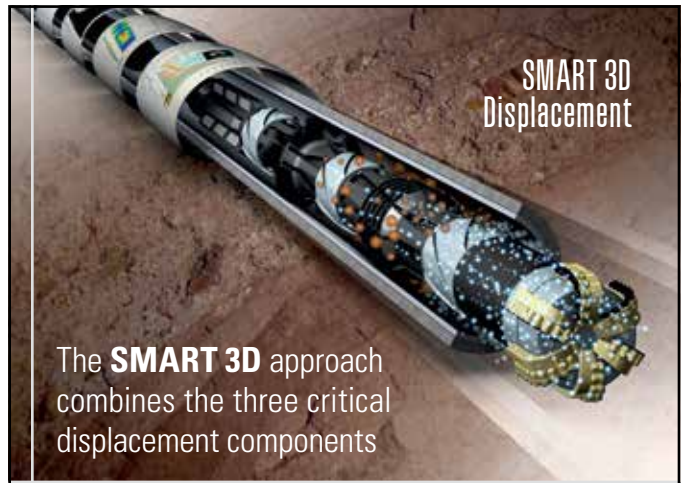


### Stop waiting for old boats and outdated equipment.

Our stimulation fleet includes many of the industry's newest, most innovative vessels incorporating advanced instrumentation and redundant, job-critical equipment.

Of course, it takes more than modern technology to ensure your well gets the right treatment the first time. Drawing on our global expertise, we carefully plan each job to ensure a customized fluid system is delivered reliably and efficiently—lowering NPT and risk while enhancing your production and profits.

 [bakerhughes.com](http://bakerhughes.com)



## SMART 3D Displacement

The **SMART 3D** approach combines the three critical displacement components

### Integrating mechanics, chemistry and hydraulics for a new dimension in displacement expertise

The SMART 3D<sup>®</sup> strategy provides a single-source, integrated package of displacement services, including the latest generation of chemical, mechanical and hydraulic technologies to promote the efficient, effective delivery of a properly prepared wellbore.



A Schlumberger Company

[www.miswaco.slb.com](http://www.miswaco.slb.com)

\*Mark of M-I LLC

Measured Solutions from  
The Completion Diagnostics Company

# Fracture Height?

With ProTechnics patented tracer and imaging services you can directly measure:

- Fracture height
- Proppant distribution
- Wellbore connectivity
- Staging efficiency
- Zonal coverage
- Limited entry

SPECTRA<sup>™</sup>  
STIM



SPECTRA<sup>™</sup>  
SCAN



**ProTechnics**

A Production Enhancement division of Core Laboratories

[www.corelab.com/protechnics](http://www.corelab.com/protechnics) 713-328-2320



## MULTI-STAGE FRACTURING



“Imitation is the sincerest form of flattery... or is it?”

Only Packers Plus delivers proven, reliable and repeatable results. We have extensive experience to run your jobs efficiently and effectively. Contact us today and let us help you maximize your assets.

DO IT ONCE. DO IT RIGHT.

[www.packersplus.com](http://www.packersplus.com)



# Entry Form *Entry Deadline – Friday, September 13, 2013*

SPE-GCS EVENTS **30TH ANNUAL TENNIS TOURNAMENT**

Name \_\_\_\_\_

Gender \_\_\_\_\_ Company \_\_\_\_\_

Address \_\_\_\_\_

City \_\_\_\_\_ State \_\_\_\_\_ Zip \_\_\_\_\_

Phone \_\_\_\_\_ Email \_\_\_\_\_

## PLAYERS **1 ENTRY FORM PER PLAYER**

Tournament Doubles \_\_\_\_\_ \$125 per person

Mixed Doubles Only \_\_\_\_\_ \$50 per person

Spouse/Guest/Speaker \_\_\_\_\_ \$25 per person

Your Rank:  Championship  A  B  C

Your T-Shirt Size:  M  L  XL  XXL

## FRIDAY TOURNAMENT DOUBLES

Are you playing tournament doubles?  Yes  No

Partner's name: \_\_\_\_\_

*(Partner must send in own entry form)*

Partner's Rank:  Championship  A  B  C

Do you need a partner?  Yes  No

## THURSDAY MIXED DOUBLES

Are you playing in mixed doubles?  Yes  No

*(Additional \$50 if Mixed doubles partner is not playing in Tournament Doubles.*

*\$50 MIXED ONLY)*

Partner's name: \_\_\_\_\_

*(Partner must send in own entry form)*

Partner's Rank:  Championship  A  B  C

## METHOD OF PAYMENT

Payment:  Check  Visa  MC  AMEX  DISC

Card Number \_\_\_\_\_ Expiration Date \_\_\_\_\_

*(If paying with credit card you mail email entry to SPE-GCS Tennis c/o joannehresko@comcast.net)*

Name as it appears on card \_\_\_\_\_

Name of sponsoring company *(If being sponsored)* \_\_\_\_\_

Amount Enclosed/Amount to Charge *(Make checks payable to SPE-GCS Tennis)* \_\_\_\_\_

Mail form/check to:

SPE-GCS Tennis

c/o Erin Chang

200 Westlake Park Blvd, 775C

Houston, Texas 77079

*If paying by credit card, forms may be e-mailed*

*To the SPE-GCS tennis treasurer at:*

*erin.chang@bp.com*

## SPONSORS

*Sponsors are a welcome and essential part of making this event a success. In recognition of their support, sponsors will be identified with special signage and privileges. 100% of the net proceeds raised by the tournament will be applied toward scholarships for the Society of Petroleum Engineers Gulf Coast Section College Scholarship Fund. All sponsors will have their company name on the tournament sponsor board and recognized in the tournament program according to sponsorship levels. Levels of available sponsorships are listed in the table below along with the number of players your company is entitled to register as part of your sponsorship. Separate entry forms are required for each player.*

- Platinum Sponsor** **\$5,000**  
*(Entitled to register 8 tournament players)*
- Gold Sponsor** **\$2,500**  
*(Entitled to register 4 tournament players)*
- Silver Sponsor** **\$1,500**  
*(Entitled to register 3 tournament players)*
- Bronze Sponsor** **\$1,000**  
*(Entitled to register 2 tournament players)*
- Court Sponsor** **\$500**  
*(Entitled to register 1 tournament player)*

**SPE-GCS also appreciates in-kind donations such as door prizes, gift certificates, ditty bag items, tennis balls, etc.**

# EVENT RECAP

## Sporting Clays Tournament



Innovative Proppant Technology



**OilPlus**  
PROPPANTS

New OilPlus™ Proppants Provide Enhanced Oil Recovery for Your Well.

E-mail us at [info@momentive.com](mailto:info@momentive.com)

**MOMENTIVE**

 **STRESS ENGINEERING SERVICES INC.**

13800 Westfair East Drive  
Houston, TX 77041-1101  
Phone: 281.955.2900  
[www.stress.com](http://www.stress.com)


**Engineering Problem Solvers**



DESIGN • ANALYSIS • TESTING




**HANGERS • PACKERS • SAFETY VALVES**



[www.tiwttools.com](http://www.tiwttools.com)

**DRILLING AND COMPLETION SOLUTIONS**  
Serving the Oil & Gas Industry since 1917



**Engineers - need technical document development help?**

- Drilling & completion programs
- Engineering reports & specifications
- Manuals & instructions
- Printing, binding & publication




**ZAETRIC®**  
[www.zaetric.com](http://www.zaetric.com)  
713-621-4885  
[inquiries@zaetric.com](mailto:inquiries@zaetric.com)

# EVENT RECAP

## Annual Awards Banquet



**Rose & Associates**

**UCRA Course**  
Advanced decision analysis and resource play assessment course

**UCRA Software**  
To model, risk and value staged drilling in resource plays

[allisondunn@roseassoc.com](mailto:allisondunn@roseassoc.com)

**Transferring E & P Risk Assessment Expertise**  
Instruction • Software Tools • Practical Consultation

ppitech.net (713) 464-2200

**Get Compliant**

Implement your SEMS program today with Compliance Manager, part of PPI's cutting-edge, web-accessible PetroPro software suite.

**PPI** Quality & Asset Management LLC

**PETROpro** software suite



**VIKING**  
ENGINEERING, L.C.

- PETROLEUM CONSULTING
- HTHP WELL DESIGN
- PROJECT MANAGEMENT
- FAILURE ANALYSIS
- TRAINING

CRITICAL WELL ENGINEERING  
CONSULTING SERVICES

VIKING'S TEAM OF HIGHLY TRAINED  
PETROLEUM PROFESSIONALS  
LEND THEIR EXPERIENCE TO  
CREATIVE WELL DESIGNS.

*WE CAN HELP PLAN AND  
EXECUTE YOUR TOUGH WELLS.*

VISIT OUR WEBSITE: [WWW.VIKINGENG.NET](http://WWW.VIKINGENG.NET)  
OR CALL: (281) 870-8455 IN HOUSTON

 **Pegasus Vertex, Inc.**

**CEMLab**  
Cement Lab Data  
Management Software

713-981-5558  
[sales@pvicom.com](mailto:sales@pvicom.com)  
[www.pvisoftware.com](http://www.pvisoftware.com)



# EVENT RECAP

## SPE Technology Symposium



# Slider

Automated Directional Drilling

## IMPROVE YOUR HORIZONTALS

- ✓ ON-BOTTOM TOOL FACE ORIENTATION
- ✓ INCREASED MOTOR LIFE
- ✓ INCREASED ROP & HORIZONTAL REACH CAPABILITY
- ✓ ELIMINATES ORIENTATION TIME LOSSES

www.slb.com

**HANGERS • PACKERS • SAFETY VALVES**

www.tiwtools.com

**DRILLING AND COMPLETION SOLUTIONS**

Serving the Oil & Gas Industry since 1917





**Integrated Energy Services ,Inc.**

**Robert Barba**  
Petrophysicist

Log Analysis  
Completion Optimization

500 N. Capital of TX Hwy  
Building 4-150  
Austin, TX 78746  
C: (713) 823-8602  
F: (713) 583-9400  
RBarba75@gmail.com

[www.integrated-energy-services.com](http://www.integrated-energy-services.com)

**PROFESSIONAL REGISTRATION REVIEW COURSES FOR PETROLEUM ENGINEERING**

**COURSE DESCRIPTION:** The Course covers most topics that are found on the Texas State Board Petroleum Engineering Professional Examination.

**HOUSTON COURSES 8:00 AM - 5:00 PM**  
I August 19 thru 23, 2013 & II October 7 thru 11, 2013

For More Information: 405-822-6761  
E Mail: [bingwines@cox.net](mailto:bingwines@cox.net)

# SPE GULF COAST SECTION DIRECTORY

Your guide to your organization leaders

## Officers

### CHAIR

Steve Baumgartner, Marathon Oil Corp.  
281-435-0264  
sbaumgartner@marathonoil.com

### VICE-CHAIR

Mike Strathman, The Trinity Group, Inc.  
713-614-6227  
mike-strathman@att.net

### SECRETARY

Lucy King, Miller and Lents, Ltd.  
713-651-9455  
lking@millerandlents.com

### TREASURER

Robert Bruant, Jr., BP America, Inc.  
281-366-2157  
Robert.Bruant@bp.com

### VICE TREASURER (ADHOC)

David Tumino, Murphy Oil  
281-717-5123  
tuminospe@hal-pc.org

### CAREER MANAGEMENT

David Flores, Oil Investment Leases, Inc.  
281-381-5828  
david\_p\_flores@yahoo.com

### COMMUNICATIONS

Valerie Martone, Anadarko  
832-636-3196  
valerie.martone@anadarko.com

### COMMUNITY SERVICES

Xuan (Sun) VandeBerg Harris, Consultant  
832-444-5143  
xuan.harris@gmail.com

### EDUCATION

Gabrielle Guerre, RyderScott  
713-750-5491  
gabrielle\_guerre@ryderscott.com

### MEMBERSHIP

Jeanne Perdue, Occidental Oil and Gas  
713-215-7348  
jeanne\_perdue@oxy.com

### PAST CHAIR

Hiep Vu, Kosmos Energy  
214-593-5095  
hvu@kosmosenergy.com

### PROGRAMS

David Tumino, Murphy Oil  
281-717-5123  
tuminospe@hal-pc.org

### SOCIAL ACTIVITIES

Scott McLean, Express Energy Services  
281-772-4927  
smclean@eeslp.com

### TECHNOLOGY TRANSFER

Russ Neuschaefer, Schlumberger  
281-285-1775  
rneuschaefer@slb.com

### YOUNG PROFESSIONALS

Sandeep Pedom, ConocoPhillips  
713-591-5738  
sandeep.pedom@conocophillips.com

### DIRECTOR 2012-14

Alex McCoy, Occidental Oil and Gas  
713-366-5653  
alexander\_mccoy@oxy.com

### Kevin Renfro, Anadarko

832-636-8613  
kevin.renfro@anadarko.com

### Wolfgang Deeg, Shell

281-544-8279  
wjfdeeg@spemail.org

### DIRECTOR 2011-13

Jeff Whittaker, Welltec  
281-398-9355  
jwhittaker@welltec.com

### Marise Mikulis, Baker Hughes, Inc.

281-275-7288  
marise.mikulis@bakerhughes.com

### Steve Turk, Weatherford

281-260-1300  
stephen.turk@weatherford.com

### SPE GULF COAST NORTH AMERICA REGIONAL DIRECTOR

Bryant Mueller, Aclaro Softworks, Inc  
713-781-2000 x 300  
bryant.mueller@aclaro.com

## Committee Chairs

### AWARDS

James Rodgerson, BP  
281-221-4085  
james.rodgerson@bp.com

### CONTINUING EDUCATION

Dorian Hicks, Rice University  
713-444-3230  
dth1@rice.edu

### ESP WORKSHOP

John Patterson, ConocoPhillips  
281-221-5298  
john.c.patterson@conocophillips.com

### GOLF

Cameron Conway, Cactus Pipe  
281-217-0660  
cconway@cactuspipe.com

### INTERNSHIPS

Gabrielle Guerre, Ryder Scott  
713-750-5491  
gabrielle\_guerre@ryderscott.com

### MAGIC SUITCASE

Sean K. O'Brien, Chevron  
832-854-3660  
sean.obrien@chevron.com

### NEWSLETTER

Kim Pinyopusarerk, Energy XXI  
713-826-7492  
editor@spegcs.org

### SCHOLARSHIP

Tanhee Galindo, BASF  
713-428-4919  
tanhee.galindo@basf.com

### SPORTING CLAYS

Tim Riggs, Inwell Directional Drilling  
713-201-4290  
tim.riggs@inwell.com

### TENNIS

Bob Fu, BP  
713-591-9808  
bob.fu@bp.com

### WEB TECHNOLOGY

Subash Kannan, Anadarko  
713-385-7242  
subash\_kannan@yahoo.com

### SECTION MANAGER

Kathy MacLennan, SPE-GCS  
713-779-9595 x 813  
kmaclennan@spe.org

## Study Group Chairs

### BUSINESS DEVELOPMENT

Steve Mullican, Grenadier Energy Partners  
281-907-4120  
smullican@grenadierenergy.com

### COMPLETIONS & PRODUCTION

Mark Chapman, CARBO Ceramics  
281-921-6522  
mark.chapman@carboceramics.com

### DIGITAL ENERGY

Carol Piovesan, APO Offshore  
949-232-6353  
cpiovesan@apooffshore.com

### DRILLING

Joe Tison, Greene Tweed  
281-784-7805  
wtison@gtweed.com

### GENERAL MEETING

James Maffione, Decision Strategies  
713-465-1110  
jmaffione@decisionstrategies.com

### HEALTH, SAFETY, SECURITY, ENVIRONMENT AND SOCIAL RESPONSIBILITY

Trey Shaffer, ERM  
281-600-1016  
trey.shaffer@erm.com

### INTERNATIONAL

Michael Cherif, ExxonMobil  
713-656-7303  
michael.h.cherif@exxonmobil.com

### NORTHSIDE

Naval Goel  
650-307-7267  
navalgoel@hotmail.com

### PERMIAN BASIN

Dan Tobin, ConocoPhillips  
832-486-2924  
Dan.C.Tobin@conocophillips.com

### PETRO-TECH

Marci Nickerson, Consultant  
713-446-3400  
mnick52@sbcglobal.net

### PROJECTS, FACILITIES, CONSTR.

Bill Kinney, Wood Group Kenny  
281-646-4198  
william.kinney@woodgroupkenny.com

### RESEARCH & DEVELOPMENT

Skip Davis, Technology Intermediaries  
281-359-8556  
skdavis@technologyintermediaries.com

### RESERVOIR

Jose Villa, Shell  
281-544-2612  
j.villa@shell.com

### WATER & WASTE MANAGEMENT

Joseph Kilchrist, Ziff Energy  
713-302-2727  
jkilchrist@sbcglobal.net

### WESTSIDE

Alex McCoy, Occidental Oil & Gas  
713-366-5653  
alexander\_mccoy@oxy.com

# CONNECT

Information

## Newsletter Committee

CHAIRMAN | Kim Pinyopusarerk  
editor@spegcs.org

AD SALES | Pat Stone  
starlite1@sbcglobal.net

BOARD LIAISON | Valerie Martone

EDITOR/DESIGN | Deuce Creative  
deucecreative.com

## SPE Houston Office

### GULF COAST SECTION MANAGER

Kathy MacLennan | kmaclellan@spe.org

### GCS ADMINISTRATIVE ASSISTANT

Sharon Harris | sharris@spe.org

### HOURS & LOCATION

10777 Westheimer Road, Suite 1075

Houston, Texas 77042

P 713-779-9595

F 713-779-4216

Monday - Friday 8:30 a.m. to 5:00 p.m.

## Photo Submissions

We are looking for member photos to feature on the cover of upcoming issues! Photos must be at least 9" by 12" at 300 DPI. Email your high resolution picture submissions to:  
editor@spegcs.org

## Change of Address

To report a change of address contact:  
Society of Petroleum Engineers  
Member Services Dept.  
P.O. Box 833836  
Richardson, Texas 75083-3836  
1.800.456.6863  
service@spe.org

## Contact

For comments, contributions, or delivery problems, contact [editor@spegcs.org](mailto:editor@spegcs.org).

## WANT TO REACH OVER 15,000 SPE MEMBERS IN THE GREATER HOUSTON AREA?

Advertise your business in the SPE-Gulf Coast Section Newsletter

Connect is printed 12 times per year and contains premium positions for advertisers wanting to reach some of the most influential oil & gas professionals in the world. We are now selling ads for the 2013-2014 program year, and our ad sizes have been updated. Please visit the SPEGCS website for more information regarding ad pricing and specifications.

IF YOU'D LIKE TO PLACE AN AD IN THE SPE-GCS NEWSLETTER OR WEBSITE PLEASE CONTACT:

Pat Stone | Star-Lite Printing, Inc | 281-530-9711 | [starlite1@sbcglobal.net](mailto:starlite1@sbcglobal.net)



**Even the best equipment  
can't do it alone.**

Hunting's reputation for excellence in well construction technology is just part of the picture. From tubular goods and connection technologies to mud motors, everything we manufacture is made better by the most respected engineers in the business, and our 24/7 support, repair and testing across North America, Europe, Asia and the Middle East. Optimize your drilling investment with Hunting.

To learn more,  
visit [www.huntingplc.com](http://www.huntingplc.com)



© 2011 Hunting (HOS1125/0511/spegcs)



NON-PROFIT  
ORGANIZATION  
U.S. POSTAGE  
PAID  
PERMIT NO. 6476  
HOUSTON, TX

SOCIETY OF PETROLEUM ENGINEERS  
GULF COAST SECTION

10777 Westheimer Road  
Suite 1075  
Houston, TX 77042

# CALENDAR

July 2013

Sunday	Monday	Tuesday	Wednesday	Thursday	Friday	Saturday
			<i>Projects Facilities &amp; Construction</i>			
	1	2	3	4	5	6
			<i>Projects Facilities &amp; Construction</i>	<i>Board Of Directors</i>		
7	8	9	10	11	12	13
			<i>Projects Facilities &amp; Construction</i>			
14	15	16	17	18	19	20
			<i>Projects Facilities &amp; Construction</i>	<i>Young Professionals Roughneck Camp</i>		
21	22	23	24	25	26	27
			<i>Projects Facilities &amp; Construction</i>			
28	29	30	31			