



Gulf Coast Section

CONNECT

SPE GULF COAST SECTION NEWSLETTER

JUNE
2013

PF&C Summer Series

Five Things You Wanted to
Know About Subsea Production

PROJECTS FACILITIES & CONSTRUCTION GROUP P. 15

FUTURE TRENDS IN OIL & GAS
RESEARCH AND DEVELOPMENT

RESEARCH & DEVELOPMENT P. 17

ROUGHNECK CAMP

YOUNG PROFESSIONALS P. 19

30TH ANNUAL SPE-GCS
SCHOLARSHIP TENNIS
TOURNAMENT

P. 23 & 25

13th Annual Sporting
Clays Tournament

Friday, June 7th

P. 26 - 28

SPEGCS.ORG



CHAIRMAN'S CORNER

STEVE BAUMGARTNER
2012-2013 SPE-GCS Chair

We are near the end of the SPE Gulf Coast Section 2012-13 program year and I would like to thank the many volunteers in the Gulf Coast Section who have been focused on supporting this organization. These volunteers exemplify the understanding of the formula for success and effective decision making: attitude, skill and character. Well-deserved recognition to the recipients of the 2013 SPE-GCS Section Service award:

| | |
|------------------|--|
| KRISTEL BLOW | Northside Study Group Treasurer |
| JIM CROMPTON | Digital Energy Study Group Committee Member |
| TANHEE GALINDO | GCS Scholarship Committee Chair |
| SHARON HARRIS | SPE-GCS Administrative Assistant |
| RUSS NEUSCHAEFER | GCS Technology Transfer Committee Chair |
| AMY TIMMONS | Permian Basin Study Group Treasurer / Drilling Study Group Program |
| JOSE VILLA | Reservoir Study Group Chair |

Congratulations to the recipients of the 2013 SPE Gulf Coast Section award for:

| | |
|-------------------------|----------------|
| OUTSTANDING STUDY GROUP | Digital Energy |
| OUTSTANDING COMMITTEE | Communications |

Creating a work-life balance is a challenge for many of us. Technology connects us to our jobs and allows us to communicate at a faster rate than ever before. Work seems to consume a larger share of our “free” time. One way to start creating a better work-life balance is setting aside quiet time for reflection and asking yourself what is most important and what you want to accomplish. Second, it is healthy to take a break. Schedule an “off” day on your calendar. Exercise and rest are stress relievers that may help you make better decisions and be more productive. Third, working smarter, not harder, can help achieve work-life balance. Fourth, write down the ten things you want to accomplish for the week and number them by priority. You can deal with an interruption by weighing what is more important: the interruption or the task you are working on. Finally, while we all think we can multitask, our brains can only focus on one thing at a time. When we focus on one task, it is amazing what we can accomplish.

The SPE-GCS Strategic Plan calls for a Long Range Plan (LRP) outlining specific action items and initiatives that are shaped by the Strategic Plan. Mike Strathman (Vice Chair) and his 2013 LRP committee are beginning this important work. The 2013 LRP committee is tasked with reviewing implementation of the initiatives outlined in the 2009-2012 LRP and making recommendations for initiatives to be included in the 2013-2016 LRP. The new LRP will be guided by the 2013 Strategic Plan approved by the SPE-GCS Board of Directors in April. It is important that the 2013-2016 LRP incorporates changes that the SPE-GCS members want, while not changing established and well-appreciated initiatives of the section. To that end, we ask each of you to communicate with the members of the LRP Committee and voice your suggestions on new initiatives to be pursued over the next three years, as well as which established initiatives should continue to be supported by our section. Please send us your comments and suggestions. My email address is sbaumgartner@marathonoil.com.

THU
June 13

7:30 AM TO 10:30 AM

BOARD OF DIRECTORS MEETING

LOCATION

SPE Houston Office
10777 Westheimer Rd.
Suite 1075
Houston, TX 77042

EVENT CONTACT

Sharon Harris
713-457-6821 EXT. 821
713-779-4216 FAX
sharris@spe.org

FEATURES

June 2013



ROUGHNECK CAMP
Young Professionals
Thursday, July 25, 2013



**30TH ANNUAL SPE-GCS
SCHOLARSHIP TENNIS
TOURNAMENT**
Thursday & Friday, September 19 -20



**13TH ANNUAL SPORTING
CLAYS TOURNAMENT**
Friday, June 7, 2013

STUDY GROUPS

RESEARCH & DEVELOPMENT
6/06/13
*Future Trends in Oil & Gas Research
& Development – Panel Discussion*

P. 17

**PROJECTS, FACILITIES &
CONSTRUCTION**
JULY

*Summer Series: Five Things you Wanted
To Know About Subsea Production Systems*

P. 15

COMMITTEES

**FALL 2013 SPE-GCS
SCHOLARSHIP WINNERS**

P. 9

**2013 SPE-GCS REGIONAL &
SECTION AWARD WINNERS**

P. 13

YOUNG PROFESSIONALS
Executive Club Winners

P. 21

IN EVERY ISSUE

SPE-GCS MEMBERSHIP REPORT
April 2013

P. 5

VOLUNTEER SPOTLIGHT
Barry Faulkner

P. 7

**SPE GULF COAST SECTION
DIRECTORY**

P. 30

Slider
Automated Directional Drilling

IMPROVE YOUR HORIZONTALS

- ✓ ON-BOTTOM TOOL FACE ORIENTATION
- ✓ INCREASED MOTOR LIFE
- ✓ INCREASED ROP & HORIZONTAL REACH CAPABILITY
- ✓ ELIMINATES ORIENTATION TIME LOSSES

www.slb.com **Schlumberger**

HANGERS • PACKERS • SAFETY VALVES

TIW

www.tiwtools.com

DRILLING AND COMPLETION SOLUTIONS
Serving the Oil & Gas Industry since 1917

FEKETE SOFTWARE TRAINING

AVAILABLE IN HOUSTON, TX

fekete HARMONY

Well Performance Analysis Environment

fastdeclineplus

Learn the fundamentals of the Fekete Harmony Environment and apply production data analysis using traditional methods

June 11, 2013
September 17, 2013
November 19, 2013

fastrta

Conventional Production Data Analysis

Learn a comprehensive methodology for production data analysis combining the use of several powerful techniques

June 12, 2013
September 18, 2013
November 20, 2013

fastrta

Unconventional Production Data Analysis

Learn a methodology for Unconventional Oil & Gas Well Performance Analysis and Production Forecasting

June 13, 2013
September 19, 2013
November 21, 2013

fastpiper

Learn how to construct Integrated Asset Models using a methodology for providing reliable baseline forecasts

September 10-11, 2013

fastwelltest

Mini-Frac (DFIT) Analysis for Unconventional Reservoirs

Learn a comprehensive methodology for analysis of Mini-Frac (DFIT) tests including Pre-closure and After-closure analysis

November 14, 2013

CUSTOMIZED TRAINING

Fekete offers custom in-house software and engineering workshops to groups of 8 or more learners.

Book an existing course for your group, or allow us to customize your training to include analysis of your data and to create a workflow to suit your specific assets.



CALGARY | HOUSTON

Visit fekete.com for detailed course outlines and registration.

SPE-GCS MEMBERSHIP REPORT

April 2013

APRIL 2013

Total: **13,947**

YP: **2,754**

MARCH 2013

Total: **13,691**

YP: **2,656**

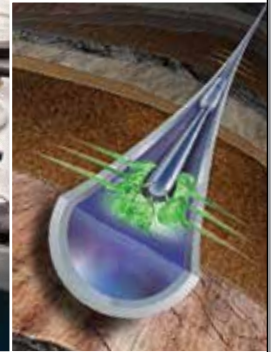
| SPE-GCS Members | FEBRUARY | | JANUARY | |
|----------------------------|----------|-----|---------|-----|
| | Total | YP | Total | YP |
| New Members | 206 | 84 | 262 | 94 |
| Transferred to Section | 12 | 1 | 7 | 1 |
| Transferred out of Section | 13 | 7 | 6 | 4 |
| Unpaid | 2,817 | 921 | 2,919 | 954 |

| Student Members | FEBRUARY | | JANUARY | |
|-----------------|----------|--------|---------|--------|
| | Paid | Unpaid | Paid | Unpaid |
| Texas A&M | 518 | 256 | 504 | 260 |
| UH/Rice | 263 | 102 | 236 | 105 |
| HCC | 45 | 13 | 40 | 14 |
| Total | 826 | 371 | 780 | 379 |

| Total Paid/Unpaid | 14,773 | 3,188 | 14,471 | 3,298 |
|-------------------|--------|-------|--------|-------|
| % Paid | 82.3% | | 81.4% | |

ACTive

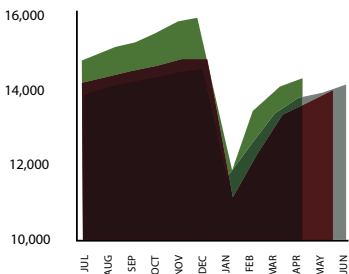
IN-WELL LIVE
PERFORMANCE



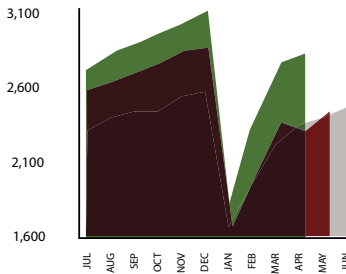
© 2013 Schlumberger. 19-07-0008

2010-2011 2011-2012 2012-2013

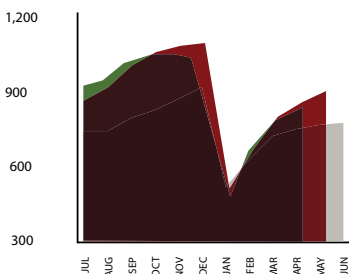
PROFESSIONALS



YOUNG PROFESSIONALS



STUDENTS



Please renew
your SPE
membership
today at
spe.org/join

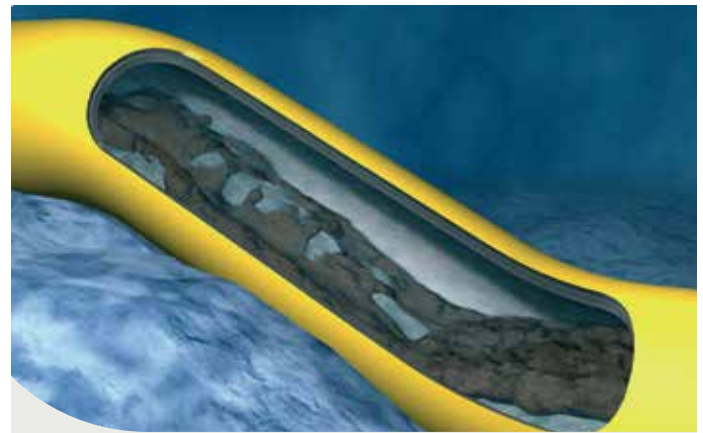
Real-time CT services help Saudi Aramco boost production by 1,000 bbl/d.

Saudi Aramco used ACTive* real-time coiled tubing services to perform a rigless water shutoff treatment in a nonproductive horizontal well. Accurate plug and packer placement isolated the water-producing zone, decreasing water cut by 50%, increasing oil production by 1,000 bbl/d, and cutting completion time in half.

Read the case study at
slb.com/ACTIVE

Schlumberger

NOV Fiber Glass Systems
 Email: fgspipe@nov.com



World leaders in dynamic modelling

SPT Group is the world leader in dynamic modelling for the oil and gas industry providing a range of software and consulting services within multiphase flow and reservoir engineering. We develop and market OLGA®, Drillbench®, MEPO® and OLGA® Online, products and solutions that maximize value for engineering and operations through the entire field development lifecycle.

The highly skilled professionals of SPT Group have a common goal of bringing state-of-the-art competence and technology to our customers.

www.sptgroup.com

SPT GROUP
 A Schlumberger Company

Pegasus Vertex, Inc.
CEMLab
 Cement Lab Data Management Software
 713-981-5558
sales@pvicom.com
www.pvisoftware.com

VIKING
 ENGINEERING, L.C.
 • PETROLEUM CONSULTING
 • HTHP WELL DESIGN
 • PROJECT MANAGEMENT
 • FAILURE ANALYSIS
 • TRAINING

CRITICAL WELL ENGINEERING CONSULTING SERVICES
 VIKING'S TEAM OF HIGHLY TRAINED PETROLEUM PROFESSIONALS LEND THEIR EXPERIENCE TO CREATIVE WELL DESIGNS.
WE CAN HELP PLAN AND EXECUTE YOUR TOUGH WELLS.
 VISIT OUR WEBSITE: WWW.VIKINGENG.NET
 OR CALL: (281) 870-8455 IN HOUSTON

MOST VERSATILE PIPELINE
 Proudly modernizing pipelines. Again.
FLEXPIPE SYSTEMS
 A SHAWCOR COMPANY
www.flexpipesystems.com
www.shawcor.com

OILWELL GUIDANCE **Oilwell Guidance, LLC**
 14427 Interdrive West, Houston, TX 77032
 832-554-2477 oilwellguidance.com

MWD & LWD Services & Personnel
Mud Pulse, EM & Resistivity Technology

- Proven, reliable Positive Pulse MWD technology, for directional-only or directional + gamma
- Fully-trained on-site support personnel
- Complete fleet maintenance programs with QA systems

PREMIER INDUSTRY EVENTS DEVOTED TO
RAPIDLY EMERGING TECHNOLOGY

FRAC SCHOOL

Oklahoma City, June 24th-28th
&
Houston, Sept. 9th-13th

You are invited you to attend our state-of-the-art, week-long course on hydraulic fracturing. Best known for a balanced presentation of the theoretical and the practical, Frac School provides a unique learning experience.

The class is an introduction to hydraulic fracturing. This course is ideal for reservoir, production and operations engineers serving on multidisciplinary asset teams. Frac School is the course of choice for both the engineer with less than 5 years experience in fracturing or those who just need a refresher.

Learn about our other events:
www.petroleumetc.com



VOLUNTEER SPOTLIGHT

Barry Faulkner

Barry Faulkner has been making the arrangements with the Petroleum Club and generating the publicity (email blasts and website posts) for the General Meeting Study Group forever – or at least since the last millennium (1999). Before that, he was an active volunteer for the Westside Study Group during the 80s and 90s. He was also active with the General Meeting group and served on the Board of Directors in the 1970s. He is one of the few who has received multiple SPE Gulf Coast Section Service Awards: one in 2009 and another in 2011. Barry was most recently a Senior Vice President at Zone Energy, but retired two years ago. Now he has even more time to volunteer for his church, his civic association, and SPE.

“I could work if I wanted to,” he said, but he’s happy just going to the General Meeting to keep up with what’s going on. “I get to see guys I haven’t seen in a while.”

Barry has a BS in Petroleum Engineering from the University of Texas at Austin and logged over 40 years of experience in the oil and gas industry. Prior to joining Zone Energy, Barry held engineering and management positions at Amoco Production Co., CMS Oil & Gas Co. and Fairways Offshore Exploration, Inc. His work has taken him to the Gulf of Mexico, Mid-continent, the Permian Basin, various areas in West and North Africa, Egypt, the Middle East, China, and South America.

Barry’s areas of expertise include reserve evaluations, field development and operations, prospect evaluation, secondary recovery, and reservoir description and evaluation. His communication skills, developed through relations with management, government officials and industry professionals from all sorts of oil companies, are put to use serving SPE members who attend our Gulf Coast Section’s General Meetings.

And if you like those ice cream balls rolled in pecans with chocolate or caramel sauce for dessert at the Petroleum Club, Barry is the guy who decides the menu each month.

Are you having EAGLE FORD PROBLEMS?

No problem
for Signa.

Know what to expect...

- Knowledge
- Feasibility
- Engineering

...Expect what you know

- Management
- Execution
- Analytics

Over 2 Million feet of
Eagle Ford experience

→ IMPROVED ROI
→ MINIMAL NPT

Drilled one foot @ a time

Signa Engineering Corp.
Houston, TX USA
www.signaengineering.com



Professional Engineers
Customer Satisfaction
Contact: Dave Roseland
281.774.1026



“Used by the field pumpers ...
...all the way up to management!”

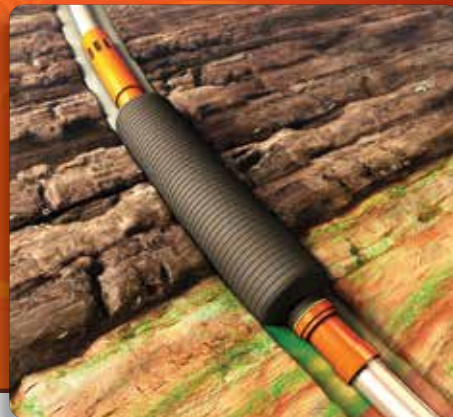


Oilfield Production Management Software
www.productioneer.com
(713) 401-9584

- Production Allocation
- Production Reporting
- 24/7 Support
- Desktop & Web App

TAM SOLUTIONS

PACKER PERFORMANCE TO THE EXTREME



TAM EPIC™ Solutions:



Eliminate gas migration and improve cement integrity by placing a TAM Casing Annulus Packer above a gas zone. The TAM metal-to-metal seal cementing Port Collar enables 2nd stage cementing to be performed and assures casing integrity. Reduce risk and improve safety with comprehensive, time-tested solutions from the gas-migration experts.

WELL INTERVENTION | DRILLING & COMPLETIONS | UNCONVENTIONAL RESOURCES | RESERVOIR OPTIMIZATION

www.tamintl.com

MULTI-STAGE FRACTURING



“Imitation is the sincerest form of flattery... or is it?”

Only Packers Plus delivers proven, reliable and repeatable results. We have extensive experience to run your jobs efficiently and effectively. Contact us today and let us help you maximize your assets.

DO IT ONCE. DO IT RIGHT.
www.packersplus.com



Control With Confidence

Engineered Prevention, Response & Results

Whether onshore, offshore or underground, Cudd Well Control has complete solutions for well planning and intervention. As a Qualified Third Party, we provide the necessary oversight to help you meet NTL-05 and NTL-06 requirements. Our team of engineering experts will assist you with a wide range of services, from rig inspections and blowout contingency planning, to specialized training and modeling. With a proven track record of success confronting blowouts and problem wells in any environment, Cudd Well Control is the preferred choice.

Well Control Services:

- Oil Well Firefighters and Blowout Specialists
- Well Control & Kick Resolution
- Underground Blowouts
- Dry Ice/Cryogenic Freeze Services
- Hot Tap and Valve Drilling Services
- Engineering Services
- Rig Inspections
- Drilling Plan Enhancements
- Blowout Contingency Planning
- Specialized Training
- Relief Wells
- Kick Modeling
- Gas Dispersion Modeling
- BOEMRE Compliance



www.cuddwellcontrol.com • +1.713.849.2769

2013

FALL 2013 SPE-GCS
SCHOLARSHIPS

WINNERS

FALL 2013 SPE-GCS
SCHOLARSHIPS

This year, SPE-GCS has awarded 27 new scholarships to graduating high school seniors who will begin their first college semester in fall 2013. These young men and women will embark on a journey to receive a degree in engineering or geoscience. All of the students receiving this scholarship have gone through a challenging selection process that analyzes their skills in math and science, their leadership, and their volunteer and extracurricular activities.

HIGH SCHOOL AUXILIARY SCHOLARSHIPS

The Houston SPE Auxiliary, which dates back to 1963 when its predecessor, the WWAIME Group, awarded the first student loans, teamed up with SPE in 1978 to begin providing scholarships to deserving students in the Houston area. Over the past 45 years, more than 500 deserving high school students throughout the Gulf Coast area have received the Houston SPE Auxiliary's "Scholarships for Tomorrow" scholarships. This year, four new SPE Auxiliary scholarships have been awarded to the following students:

DREW HEUGEL
Lamar Consolidated High School

LAUREN MCALEXANDER
George Ranch High School

MARK MELTON
Seven Lakes High School

ALOYSIUS UTOMO
Bellaire High School

HIGH SCHOOL SPE-GCS SCHOLARSHIPS

SPE-GCS scholarship funds are awarded annually to outstanding local high-school seniors who plan to pursue a career in the petroleum industry and will major in engineering or science. Each scholarship provides \$3,000 per year for new recipients as well as renewals. The majority of funds for the program are raised through the individual volunteer efforts of the 15,000+ members of the SPE-GCS and the Houston SPE Auxiliary in the Greater Houston area. Within SPE-GCS, funds are raised through sporting clays, golf and tennis tournaments, workshops, continuing education programs, seminars, symposia and study groups. The Houston SPE Auxiliary derives funds for its scholarship program by holding fundraising events for the activities of special interest groups of the organization or through memorial contributions and by working as volunteers in the OTC Nomad International Room and as support staff in the SPE office.

While the main purpose of SPE-GCS is to disseminate technical information for engineers involved in our industry, the second objective is to encourage students to develop their abilities in mathematics, science and engineering. The scholarship program helps meet that objective. It has been a key program for SPE-GCS since it was founded by the Auxiliary many years ago. This year, 17 deserving high-school students will be receiving a SPE-GCS Scholarship.

RYAN BAUMGARTNER
Memorial High School

KATHERINE FEDER
Conroe High School

CALEB KNIGHT
Jersey Village High School

ALLISON BUETTNER
Stephen F Austin HS

WILLIAM FROEBEL
Cypress Creek High School

HENRY MERSCHAT
Katy High School

JOHN BURMAN
Cypress Creek High School

GRACE HOWLEY
Kingwood High School

CLAIRE MULLEN
Brenham High School

TIMOTHY DAVIS
Memorial High School

ANTHONY HRESKO
Stephen F Austin HS

KEVIN NGUYEN
Mayde Creek High School

ERIK DENGLER
The Colony High School

ROBERT JORDAN
Bellville High School

MASON WHITTINGTON
Foster High School

JACK DISORBO
Kingwood High School

DANNA KNIGHT
Jersey Village High School

Community in Schools Houston (CISH) Scholarship

This year, we also recognize the winners of the Community in Schools Houston (CISH) Scholarship. The Society of Petroleum Engineers is a long-time partner of CISH Inc. and has successfully hosted this Job Training Program for CISH high school students for many years in order to prepare them for successful employment. This partnership creates educational experiences that will develop and enhance transferable life skills, as well as create exposure to career choices such as:

- ENVISIONING THEIR FUTURE
- RESEARCHING CAREERS
- SETTING GOALS AND SOLVING PROBLEMS
- GAINING EXPERIENCE

Winners Continued on Page 11

PATENTED proNova™ by TDE

DRILLING PERFORMANCE

CREW PERFORMANCE MEASUREMENTS

AUTOMATIC OPERATIONS DETECTION

INVISIBLE LOST TIME DETECTION

281.755.7595
www.pronova-tde.com

SMART 3D Displacement

The **SMART 3D** approach combines the three critical displacement components

Integrating mechanics, chemistry and hydraulics for a new dimension in displacement expertise

The SMART 3D[®] strategy provides a single-source, integrated package of displacement services, including the latest generation of chemical, mechanical and hydraulic technologies to promote the efficient, effective delivery of a properly prepared wellbore.

Mi SWACO
A Schlumberger Company
www.miswaco.slb.com

*Mark of M-I LLC

Don't put your offshore stimulation program on hold.

Stop waiting for old boats and outdated equipment.

Our stimulation fleet includes many of the industry's newest, most innovative vessels incorporating advanced instrumentation and redundant, job-critical equipment.

Of course, it takes more than modern technology to ensure your well gets the right treatment the first time. Drawing on our global expertise, we carefully plan each job to ensure a customized fluid system is delivered reliably and efficiently—lowering NPT and risk while enhancing your production and profits.

bakerhughes.com

BAKER HUGHES

© 2010 Baker Hughes International High Services. 3020

SAVING THE PLANET, ONE FRAC AT A TIME

Our latest citrus-based hydraulic fracturing chemicals will revolutionize the way the world thinks about fracturing and will improve your production.

For more information contact
cesimkt@flokend.com
or call
832-308-CESI (2374)

THIS YEAR'S SIX NEW CISH SCHOLARSHIP WINNERS ARE

ANDREA CRUZ
Milby High School

SPRING GARCIA
Davis High School

AMANDA IBARRA
Milby High School

LUIS NAVARRETE
Southwest High School

DORCAS MBAERI
Alief Taylor High School

LEONARDO ROJO JR.
Milby High School

COLLABORATING IN HOUSTON FOR THE ADVANCEMENT OF SCIENCE AND ENGINEERING (CHASE)

CHASE (<http://chase.uh.edu>), Collaborating in Houston for the Advancement of Science and Engineering, is a local community initiative in Houston to improve the level of teaching skills of Math teachers, starting with at-risk students in the greater Houston area. CHASE raises funds for scholarships so these teachers can take graduate level math courses and obtain a Masters of Math Teacher Certification (MMT). The CHASE mission is twofold: (1) to better equip teachers, to encourage continued growth, to provide leadership training, and to influence and mentor other teachers, and (2) thereby better equip students for engineering prep courses ultimately leading to technical pursuits, to increase graduation rates, and to increase community service. We would like to congratulate the following teachers for completing their MMT certification.

COHORT TWO
VALERIE CLEM
MICHELLE COOK
BETTY MARTIN

COHORT THREE
JENNIFER MASCHECK
MICHELLE LUSTER
ELLEN MCNAMEE
PATTY CROSKREY
DEBRA BOLIN
MONICA GONZALES
MARIAM RODRIGUEZ

ALTERNATES FOR
COHORT TWO
KIMBERLY HICKS
CARMEN JOHNSON

LEGION OF HONOREES

The SPE Legion of Honor recognizes individuals who have maintained their membership in SPE for 50 years. This list of inductees includes not only captains of industry and pioneers in exploration, production and petroleum technology, but also numerous members who have received SPE recognition before. The list includes SPE Directors, SPE Distinguished Members, and holders of countless SPE officer positions over the past 50 years. The people on this list have written hundreds technical papers and articles, compiled several textbooks, and hold dozens of technical patents. The list contains many industry leaders of the past and present that guided the full spectrum of companies – from small independent firms to major Fortune 500 corporations. The importance of their accomplishments and dedication over the last 50 years cannot be overstated.

MR. WALTER W ALLEN
MR. NATHANIEL G BEARD
MR. DOUGLAS H BURGESS
MR. NOLAN E CANNON
MR. ELMOND L CLARIDGE
MR. FIELDING B CRAFT
MR JOSEPH R HARRIS
MR. EDWARD D HOLSTEIN

MR. CLYDE G INKS
MR. ROBERT L KENNEDY
DR. K. TERRY KOONCE
MR. HERBERT A LESSER
MR. GARY J MABIE
DR. WILLIAM J MCDONALD
MR. DAVID G NUSSMANN
MR. CHARLES R PECK

MR. PAUL E PILKINGTON
MR. FRANK H RICHARDSON
MR. WAYNE A SCHNEIDER
MR. ROBERT S SINGER
MR. DAVID K SMITH
MR. ROBERT H STEFFLER
MR. PHILIP R WHITE

ppitech.net (713) 464-2200

Get Compliant

Implement your SEMS program today with Compliance Manager, part of PPI's cutting-edge, web-accessible PetroPro software suite.

PPI Quality & Asset Management LLC

PETROpro software suite



RYAN DIRECTIONAL SERVICES
A NABORS COMPANY

NABORS.COM

An equal opportunity employer that values diversity and fosters a culture of inclusion. CHEVRON, the CHEVRON Hallmark and HUMAN ENERGY are registered trademarks of Chevron Intellectual Property LLC. © 2013 Chevron U.S.A. Inc. All rights reserved.

START EVERY DAY AT THE FOREFRONT OF ENGINEERING.

At Chevron, you'll join a team with the technology to take on big challenges, the integrity to do it responsibly, and the drive to keep the world moving forward. Are you up to the job?

Chevron is seeking experienced petroleum engineers for production, reservoir, reservoir simulation, drilling and completions positions.

Please visit us online at www.chevron.com/careers to learn more and apply.

**JOIN THE
CHALLENGE.**



Human Energy®

2013

2013 SPE-GCS
REGIONAL & SECTION

WINNERS

2013 SPE-GCS
REGIONAL & SECTION

SPE-GCS SECTION SERVICE AWARD WINNERS

KRISTEL BLOW
Northside Study Group Treasurer

JIM CROMPTON
Digital Energy Study Group
Committee Member

TANHEE GALINDO
GCS Scholarship Committee Chair

SHARON HARRIS
SPE-GCS Administrative Assistant

RUSS NEUSCHAEFER
GCS Technology Transfer
Committee Chair

AMY TIMMONS
Permian Basin Study Group Treasurer /
Drilling Study Group Program

JOSE VILLA
Reservoir Study Group Chair

MOST OUTSTANDING STUDY GROUP

DIGITAL ENERGY

CAROL PIOVESAN
Chair

SIDD GUPTA
Vice Chair

MARY LANHAM
Treasurer

MICHAEL STERNESKY
Programs

VALERIE MARTONE
Website/Webinar

MOST OUTSTANDING COMMITTEE

COMMUNICATIONS

VALERIE MARTONE
Director

KIM PINYOPUSARERK
Newsletter Chair/Editor

SUBASH KANNAN
Web Technology Chair

KATHY MACLENNAN
SPE-GCS Section Manager

SPE HOUSTON ENGINEER OF THE YEAR

DR. JOHN LEE
University of Houston

SPE HOUSTON YOUNG ENGINEER OF THE YEAR

VALERIE MARTONE
Anadarko

REGIONAL SPE AWARDS

**DISTINGUISHED
CORPORATE SUPPORT**
Baker Hughes

**COMPLETIONS OPTIMIZATION &
TECHNOLOGY AWARD**
George Wong, Shell

**DISTINGUISHED ACHIEVEMENT AWARD
FOR PETROLEUM
ENGINEERING FACULTY**
Dr. A. Daniel Hill, Texas A&M University

DRILLING ENGINEERING AWARD
Robello Samuel, Halliburton

FORMATION EVALUATION AWARD
Mark Proett, Halliburton

**HEALTH, SAFETY, SECURITY,
ENVIRONMENT & SOCIAL
RESPONSIBILITY AWARD**
Graham Rae, Occidental

**MANAGEMENT &
INFORMATION AWARD**
Carol Piovesan, APO Offshore

PRODUCTION & OPERATIONS AWARD
Luigi Saputelli, Frontender

**PROJECTS, FACILITIES &
CONSTRUCTION AWARD**
Hariprasad Subramani, Chevron

**RESERVOIR DESCRIPTION &
DYNAMICS AWARD**
Nicole Champenoy, Chevron

SERVICE AWARD
Daryl Johnson, CARBO Ceramics, Inc.
Sandeep Pedam, ConocoPhillips
Shivkumar Patil, AkerSolutions
Barry Faulkner, Consultant

**YOUNG MEMBER
OUTSTANDING SERVICE AWARD**
Elizabeth DeStephens, Occidental
Moji Karimi, Weatherford

TETRA Technologies, Inc.



30 Years...Providing Solutions to the Oil & Gas Industry

- Well Testing
- Frac Flow Back
- Sand Management
- Early Production Facilities
- Data Acquisition Systems
- Production Enhancement
- Wellhead Compression
- Completion Fluids
- Casing Clean-Up Tools
- Fluid Filtration Services
- Frac Water Management
- Cased-Hole Wireline Services



tetrathec.com

Focused on Energy. Dedicated to Service.

© 2010 TETRA and the TETRA logo are registered trademarks of TETRA Technologies, Inc. All Rights Reserved.

PROCESS IMPROVEMENT

MAXOIL IS A GLOBAL CONSULTANCY WITH A PROVEN TRACK RECORD IN ENHANCING OIL AND GAS PRODUCTION, ASSET AND FIXED OPERATIONAL EFFICIENCY



- Gas Treatment
- Fluids Separation
- Produced Water Management
- Trouble Shooting
- Debottlenecking
- Process Engineering
- Flow Assurance
- Advanced Diagnostics
- Production Chemistry

MATURE ASSET OR NEW DEVELOPMENT -
PROCESS OPTIMIZATION VIA A HOLISTIC APPROACH

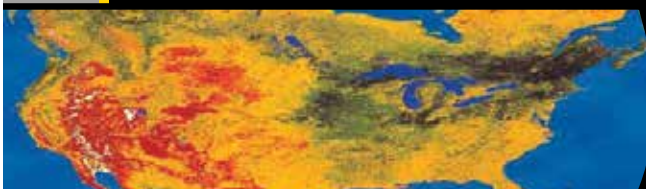
Team of Industry Specialists
Practical Cost Effective Solutions
Objective Technical Assessments
Application of Operational Expertise



contact@maxoilsolutions.com • www.maxoilsolutions.com
ABERDEEN | LONDON | HOUSTON | STAVANGER | KUALA LUMPUR | PERTH

PHDWIN™

Integrated Economics & Decline Curve Software



EVEN MORE POWERFUL WITH

PHDRMS™

Intuitive Interface
Affordably Priced
60-Day Money-back Guarantee

Schedule an **online**
presentation
TODAY!

POWERFUL FLEXIBLE SECURE

TRC CONSULTANTS, LC
888.248.8062 | www.phdwin.com

Intertek

Westport Technology Center

Providing Expertise in
Reservoir Characterization and Optimization

Services include:

- PVT and Fluid Phase Behavior
- Routine and Special Core Analysis
- Enhanced Oil and Gas Recovery
- Geochemistry
- Petroleum Geology and Petrophysics
- Unconventional Reservoirs
- Drilling Fluids
- Flow Assurance
- Oilfield Corrosion
- Petroleum Microbiology

Intertek
Westport Technology Center
6700 Portwest Drive
Houston, Texas
713.479.8400
westportservices@intertek.com

www.intertek.com



PF&C Summer Series: Five Things You Wanted To Know About Subsea Production Systems

4:00 PM - 5:30 PM

As offshore discoveries go deeper and into new environments, producing these resources becomes a more complex challenge. Stakeholders must give consideration to numerous factors, many of which can make or break the economics of a development. Subsea is one of the key considerations in development and production of hydrocarbon resources and becomes even more critical as the economics escalate as time passes. Subsea concepts and solutions have seen considerable advancement in the application of innovative ideas and technologies to address production challenges.

Five topics, presented by industry-recognized experts, have been selected to provide the attendee with a general understanding of the challenges that face subsea production and the methods implemented to address these challenges.

Each session is scheduled as a one-hour presentation followed by a 30-minute Q&A session. We expect a large turnout, so please book early and try to attend all five. We appreciate the support of our SPE-GCS members and we look forward to seeing you there you there.

Abstract

SERIES I: FMC will be demonstrating the 3D software that the company uses to present an introduction to subsea hardware and basic field development. The software tool enables the audience to fly in and around all the various types of hardware normally supplied by FMC. There will be discussions on vertical versus horizontal tree selection, the role of the subsea tree and how the auxiliary systems are designed to enable ease of installation and provide high availability.

SERIES II: Cameron will address concepts associated with increasing recovery from subsea reservoirs. These concepts will be centered on subsea boosting options including multiphase pumping, single phase pumping, gas-liquid separation and hybrid boosting, large gas field boosting using dry gas compressors and wet gas compression. We will also look at the pros and cons of carrying out water injection subsea and describe recent produced water separation and injection initiatives.

SERIES III: INTECSEA will provide an overview of deepwater floating production systems used by the oil and gas industry. A summary of the main characteristics of different floating production system types will be presented along with the pros and cons of each system. We will also present recent innovations and future challenges to the floating production systems. Methodologies on how to select a floating production system for oil and gas field development will be also discussed.

SERIES IV: Assured Flow Solutions will be discussing flow assurance issues and various methodologies for mitigating the risk of permanently or temporarily losing production. Company experts will cover hydrate plugging, wax deposition, corrosion/erosion, scale deposition, asphaltenes and others. The presenter will provide insight into various methods of mitigation.

SERIES V: Technip will go into the design and installation of umbilicals and flexible pipelines. This lecture will take advantage of the considerable experience of Technip in the design and installation of these types of systems and the options available with regard to installation hardware.

Event Info

DATES

Series I - July 3rd
Series II - July 10th
Series III - July 17th
Series IV - July 24th
Series V - July 31st

LOCATION

Technip Energy Tower 1
11700 Katy Freeway
Houston, Texas 77079

CONTACT

Brad Nelson
832-230-8246
bnelson@maxoilsolutions.com

COST

Member & Non-Member \$45

Waterflood

Commissioning & Startup

Materials & Corrosion

Chemical Systems Engineering

Flow Assurance

GATE
GIBSON APPLIED TECHNOLOGY & ENGINEERING LLC

16360 Park Ten Place
Suite 206
Houston, TX 77084
P (281) 398-5781
F (281) 398-0935
www.gatellc.com

New LCM that **One Size Fits Many™** for Cementing/Drilling to Meet the New Requirements

particulate filter plugs

permeable foam wedge bridges

Sized Foam Wedges

Spongy Foam Filtration Material

One Size Fits Many

| | | |
|---|---|--|
| <p>WEDGE-SET®</p> <p>Squeeze Pills Remedial Only</p> | <p>QUIK-WEDGE™</p> <p>Mixed in Mud Preventive & Remedial</p> | <p>STRESS-SHIELD™</p> <p>GeoMechanics Based Preventive Only</p> |
|---|---|--|

For case histories and other details, contact Max Wang at 281-450-4944 or go to www.sharp-rock.com

Sharp-Rock Technologies, Inc.

© 2012 Sharp-Rock Technologies, Inc. All rights reserved.

RECORD-BREAKING PERFORMANCE

62 INDEPENDENTLY-TREATED STAGES WITH THE NEW **SUPER-PORT STIMULATION SLEEVE**

AVAILABLE FOR OPENHOLE, CEMENTED, AND HPHT APPLICATIONS

PEAK COMPLETIONS
INNOVATION | QUALITY | EXPERIENCE

CONTACT YOUR LOCAL PEAK REP AT 713.223.5751 OR INFO@PEAKCOMPLETIONS.COM

PetroSkills®

Build Your Foundation

To maximize convenience, PetroSkills will deliver its most popular courses multiple times in the Houston area over the next few months. These courses build a firm foundation and a solid platform for careers in their disciplines.

- **Basic Petroleum Engineering Practices – BE:**
July 8-12, 9-13 Sept, Nov 18-22
- **Production Operations 1 – P01:**
June 10-21, Sept 16-27, Dec 2-13
- **Applied Reservoir Engineering – RE:**
June 17-28, July 15-26, Nov 4-15, Dec 2-13
- **Completions and Workovers – CAW:**
June 24-28, October 7-11, November 11-15
- **Evaluating and Developing Shale Resources – SRE:**
May 20-24, August 26-30

For details on these or our other 250 sessions in the Gulf Coast, contact Patty Davis, (832) 426-1203 or patty.davis@petroskills.com, or see details and full selection at www.petroskills.com

Future Trends in Oil & Gas Research and Development – Panel Discussion

A panel discussion on “Future Trends in Oil & Gas Research & Development.” Each panelist will give a five-minute introduction on the topic. We will then invite audience questions and participation in order to have a wide-ranging discussion on the topic.

Henry Bergeron

Henry Bergeron has been the Well Systems Focus Area Manager for Chevron Energy Technology Company since 2008. He most recently worked as a Senior Drilling Advisor in Atyrau Kazakhstan on the Tengiz Sour Gas Injection Major Capital Project. He also worked as a Drilling Advisor in Lagos Nigeria and Duri Indonesia and in various locations in the United States. He has been involved in numerous drilling and completion projects in extreme environmental conditions and using horizontal, multilateral technology. He began his career with Gulf Oil Company in New Orleans Louisiana in 1981. He holds a Bachelor of Science degree in Petroleum Engineering from Louisiana State University and is a registered engineer in the State of Texas.

Jim Raney

Jim Raney graduated from the United States Military Academy at West Point in 1975 and joined Mobil Oil in 1981. He served in a variety of technical and management assignments with Mobil and ExxonMobil before joining Anadarko Petroleum in 2001. He was called to active duty to support Operation Enduring and Iraqi Freedom. In 2004, he returned to Anadarko and is currently the Director of Engineering & Technology. In addition to his duties at Anadarko, Jim serves as Chairman of the API Committee on Standardization of Oilfield Equipment and Materials (CSOEM) and Vice-Chairman of the API Global Industry Services Committee.

John H. Hallman, Ph.D.

John H. Hallman, Ph.D. is Manager of the Strategic Technology Group, reporting to the Weatherford CTO and Group Vice President for Research and Engineering. The Strategic Technology Group seeks out opportunities for new technology development and collaboration and serves as the principal liaison between Research and Engineering and operator technology groups, universities and consortia. John also manages a fundamental and applied research budget for mainly external research projects. Prior to that, Hallman worked in both the Managed Pressure Drilling and Engineered Chemistry groups within Weatherford. He is a member of SPE and the American Chemical Society and has seven patents and numerous publications in technical journals. John received a B.S. in Chemistry from Ursinus College (PA) and a Ph.D. in Physical Organic Chemistry from the University of Houston.

Dr. Kesh Keshavan

Dr. Kesh Keshavan is Technology Advisor at Schlumberger. His full bio was unavailable at printing.

Event Info

PANEL

Henry Bergeron
Jim Raney
John H. Hallman, Ph.D.
Dr. Kesh Keshavan

LOCATION

Norris Conference Center
9990 Richmond Ave, Suite 102
Houston, TX 77042

EVENT CONTACT

Skip Davis
281-359-8556
skdavis@technologyintermediaries.com

MEMBERS

\$35 before 6/5/13, \$40 after

NON-MEMBERS

\$40 before 6/5/13, \$45 after



**More uptime.
More fracturing.**



We put you first.
And keep you ahead.

www.fmctechnologies.com



**Even the best equipment
can't do it alone.**

Hunting's reputation for excellence in well construction technology is just part of the picture. From tubular goods and connection technologies to mud motors, everything we manufacture is made better by the most respected engineers in the business, and our 24/7 support, repair and testing across North America, Europe, Asia and the Middle East. Optimize your drilling investment with Hunting.

To learn more,
visit www.huntingplc.com



© 2011 Hunting (HOS1125/0511/spegs)



**FRAC
or
FICTION**

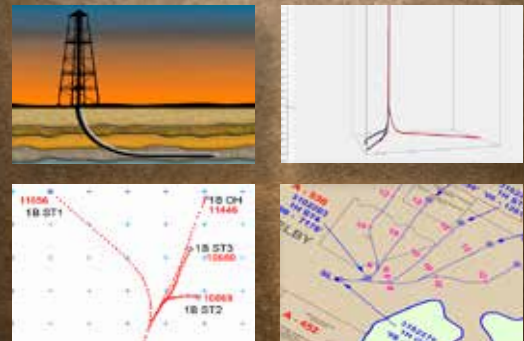
FACT: No foreign proppant can match CARBO's quality.

CARBO Ceramics® has maintained the highest standards of proppant quality from the mine to the wellsite for more than 30 years. Don't put your multimillion dollar investment at risk with marginal alternatives – trust CARBO.



Test your knowledge
FracOrFiction.com
Or text* CARBO to 99000

**TGS DELIVERS
DIRECTIONAL SURVEY PLUS**



More than just your standard directional survey.

Directional Survey Plus (DS+) data goes beyond the simple capture of measured depth, azimuth and inclination. DS+ data are thoroughly researched, re-processed and standardized to create the most accurate spatial representation of the well path, from surface to total depth.

For more information, contact TGS at:

US
Tel: +1 713 860 2100
Email: info@tgs.com



Learn more at WWW.TGS.COM

THE NEXT GENERATION OF LEADERS ROUGHNECK CAMP

Roughneck Camp (RNC) is an annual one-day conference focused on welcoming students, interns, technical professionals and new members to the oil and gas industry.

- Career Development Sessions
- Presentations by Industry Leaders
- Networking Opportunities
- Technical Sessions
- Panel Discussion

WHO

Interns and Young Professionals with less than 5 years of work experience

REGISTRATION

www.spegcs.org/roughneck-camp/

LOCATION

Anadarko Petroleum Corporation
1201 Lake Robbins Drive
The Woodlands, TX 77380

RNC CO-CHAIRS

John Jackson
713-998-3121
jjackson@reclaim.com

Mudassir Siddiqui
713-614-5240
msiddiquit@gmail.com

MEMBERS

\$50 before 6/30/13, \$60 after

NON-MEMBERS

\$60 before 6/30/13, \$70 after

EVENT SPONSORS

Diamond



Platinum



Gold



| TIME | SPEAKER | TOPIC |
|----------|---|--|
| 7:00 AM | | Check-in/ Registration |
| 8:00 AM | Mudassir Siddiqui, RNC Co-Chair | Opening Remarks |
| 8:10 AM | Doug Lawler, Senior Vice President, Anadarko | Are We There Yet? Mapping a Career in Oil & Natural Gas |
| 8:45 AM | Laurent Poncent, Strategy Manager, Statoil | Impact of the Shale Revolution on the E&P Leadership Model |
| 9:20 AM | Claude Thorp, Vice President, Hamilton Group | The Importance of Image Management |
| 9:55 AM | | Ice Breaker 1 |
| 10:30 AM | David Strople, Exploration Land Manager, Conoco | The Role of the Landman in Capturing Opportunities |
| 11:05 AM | Allen Sinor, Vice President, Baker Hughes | World of Change - Drilling |
| 11:40 AM | | Lunch |
| 12:50 PM | Open Panel Discussion | |
| 1:25 PM | Larry Irving, Vice President, Emerson | The Past, Present, & Future of Automation |
| 2:00 PM | Shawn Stroman, Vice President, FTS International | Fluid Systems 101 |
| 2:35 PM | Dr. Holley, Director of Petroleum Engineering, U of H | Should I go to Graduate School |
| 3:10 PM | | Ice Breaker 2 |
| 3:40 PM | Danny Brown, Maverick Basin Manager, Anadarko | Overall Energy Picture - What it is, Why, & Implications |
| 4:15 PM | Richard Little, Vice President, EP Energy | TBD |
| 4:50 PM | John Jackson, RNC Co-Chair | Closing Remarks |
| 5:00 PM | | Social Networking at TBD |

Broaden your expertise.



NExT oil and gas training and career development instructs more than 10,000 E&P professionals every year.

With hands-on mentoring and coaching, at a Schlumberger training facility or on the job, NExT training can help you expand your technical expertise.

To view our full list of courses and to enroll, visit www.NExTtraining.net

Featured Course

Shale Play Evaluation
 Finding Production Sweet Spots
 July 15–18, 2013
 Houston, Texas, USA



A FULL SERVICE WELL TESTING COMPANY

- Well Testing Services
- Frac Flow Back and Well Clean-up
- Drill Stem Testing (DST)
- Perforating Services
- Subsea Intervention/Landing String Assemblies
- Pipe Line Services
- Wireline
- Water Treatment

www.pts-technology.com
 281-498-7399

Measured Solutions from
 The Completion Diagnostics Company

Fracture Height?

With ProTechnics patented tracer and imaging services you can directly measure:

- Fracture height
- Proppant distribution
- Wellbore connectivity
- Staging efficiency
- Zonal coverage
- Limited entry

SPECTRA™ STIM

SPECTRA™ SCAN

ProTechnics
 A Production Enhancement division of Core Laboratories

www.corelab.com/protechnics 713-328-2320

www.GeoSteering.com

Specialists in geosteering with LWD

Real-time and 24 / 7

GR to Quad-Combo
 Image Interpretation
 Resistivity Modeling

USA

- Bakken & Three Forks, Niobrara, Eagleford, Granite Wash, Woodbine, Permian, Haynesville, Barnett, Woodford, etc

International

Middle East, Europe, Latin America, China etc.

281-573-0500
info@geosteering.com

Real-time Log from Eagle Ford Geosteering Job

SOCIETY OF PETROLEUM ENGINEERS GULF COAST SECTION EXECUTIVE CLUB WINNERS

Congratulations To Our Winners!

PLATINUM MEMBER

Brittany Niles
Wins a \$100 Gift Card



SILVER MEMBER

Will Cottle
Wins a \$50 Gift Card



NOW REPRESENT YOUR COMPANY AND SCHOOL

The Executive Club is expanding to help recognize the companies and universities that support our members.

Email Carlos Fernandez to find out more about the Executive Club!
carlos.f.fernandez@exxonmobil.com

GOLD MEMBER

Andrew Ragard
Wins a \$75 Gift Card

Integrated Energy Services, Inc.

Robert Barba
Petrophysicist

Log Analysis
Completion Optimization

500 N. Capital of TX Hwy
Building 4-150
Austin, TX 78746
C: (713) 823-8602
F: (713) 583-9400
RBarba75@gmail.com

www.integrated-energy-services.com

Society of Petroleum Engineers TRAINING COURSES

Setting the standard for technical excellence.

Relevant. Reliable. Rewarding.

Courses are available for all levels of professionals.

Attend an SPE training course to learn new methods, techniques, and best practices to solve the technical problems you face each day.

Find out more at www.spe.org/training.



Get the current schedule—
wherever you are. Scan here
with a QR code reader.

Society of Petroleum Engineers





Expect More

More **SYSTEMS**
More **SERVICES**
More **LOCATIONS**

Pump jacks with legendary quality and reliability have been the reputation of Lufkin for more than 100 years. In that same tradition, Lufkin now offers more artificial lift systems, more support services and more locations to serve operators around the world. These highly engineered solutions, supported by our experienced staff, deliver optimum production from your oil and gas wells.

Now, more systems and services to meet your requirements:

- | | |
|---------------------------------|---------------------------------|
| Field Optimization | Plunger Lift |
| Beam Pumping Units | Gas Lift |
| Hydraulic Pumping Units | Completion Products |
| Progressing Cavity Pumps | Maintenance & Repair |
| Reciprocating Pumps | Training |
| Automation | |

Scan for More
Product Information



The Energy Flows Through Us®

LUFKIN.COM

1 SOURCE

FOR TOTAL WATER MANAGEMENT

SELECT ENERGY SERVICES
selectenergyservices.com

STIMULATION MONITORING

To get the most out of every frac, real-time near- and far-field monitoring is a winning combination.

In unconventional plays, you're challenged by how to make more oil or gas while reducing costs and meeting environmental parameters. Halliburton has the solution: distributed temperature sensing—used in conjunction with microseismic fracture mapping—that gives operators the ability to make adjustments during a treatment to help assure every planned zone is treated.

What's *your* stimulation monitoring challenge?
 For solutions, visit www.pinntech.com

Solving challenges.™



© 2013 Halliburton. All rights reserved.

THU/FRI
September
19/20

SPE-GCS 30TH Annual Tennis Tournament

THU 4:00 PM - FRI 8:00 PM

The 30th Anniversary Society of Petroleum Engineers Gulf Coast Section Tennis Tournament will be held on THURSDAY, September 19th & FRIDAY, September 20th at The Houston Racquet Club located at 10709 Memorial Drive in Houston, Texas. Proceeds from the tournament benefit the SPE-GCS Scholarship Fund. In combination with other section functions, there have been 20 new scholarships for incoming college freshman studying petroleum engineering, math and sciences, and 89 renewed scholarships which include sophomores, juniors and seniors with their continued education in petroleum engineering. More than \$3 million dollars in scholarships have been awarded since 1963 to students through this program.

In 2012, we had a very successful tournament with over 80 players participating. Registrations and sponsorships raised \$50,000 in revenue. After tournament expenses, net proceeds of over \$26,100 dollars were contributed to the SPE-GCS Scholarship Fund.

Sponsors are a welcome and an essential part of making this event a success. All sponsors will be recognized in the tournament program and on the sponsorship billboard that is exhibited throughout the tournament. Please see the Sponsor Form for sponsorship levels. In-kind donations for ditty bags and door prizes are also accepted.

On behalf of the entire 2013 SPE-GCS Tennis Committee, we look forward to seeing everyone for two fun-filled days of tennis!

QUESTIONS

Bob Fu
713-591-9808
bob.fu@bp.com

Suzanne del Rosario Davis
832-618-5282
sdelrosariodavis@lgc.com

START TIMES

Mixed Doubles
Begins Thursday
September 19th - 6:00 PM

Tournament Doubles
Begins Friday
September 20th - 9:00 AM

LOCATION

The Houston Racquet Club
10709 Memorial Drive
Houston, TX 77024
713-464-4811
houstonracquetclub.com

DEADLINE

September 13, 2013
Participation is limited and
entries will be accepted on
a first-come, first-served basis

EVENT INFORMATION

There will be two flighted round robin events:
Tournament Doubles – Friday, September 20th
Mixed Doubles – Thursday evening, September 19th

The tournament doubles event is open to men and women and is a combined bracket. Partners may be of the same gender or mixed.

The committee will assist players who do not have a partner for any event.

FLIGHTING

Championship – Advanced Players
A – Regular & Advanced Players
B – Intermediate Players
C – Non-regular Players & Beginners

The SPE-GCS Tennis Committee reserves the right to allocate players to a different flight if necessary. Please rank yourself on the honor system.

WHAT TO EXPECT

Lots of tennis, meeting old friends and making new ones. Door prizes, T-shirts, awards, meals and beverages.

Thursday – Light dinner
Friday – Breakfast, lunch and snacks
Hit & Grab – Friday after lunch
Award presentations, door prizes & heavy appetizers – late Friday afternoon ~ 4PM

RULES OF ENTRY

The event is open to members, nonmembers, guests, and friends of SPE. The only restriction is that tennis professionals are not allowed.

REGISTRATION

Thursday, September 19th - 4:00 - 6:00 PM
Friday, September 20th - 8:30 - 9:00 AM

IMPORTANT NOTICE

All paid participants must wear their "Name Tags" during this event to have access to the food and drinks

ENTRY FEE INFORMATION

\$125.00 Per person - Fee covers Tournament and Mixed Doubles for an individual player.
\$50.00 for those only playing Mixed Doubles.
\$25.00 – Spouse/Guest (Not Playing)
Fees are due with entry form.

Rose & Associates

UCRA Course
Advanced decision analysis and resource play assessment course

UCRA Software
To model, risk and value staged drilling in resource plays
allisondunn@roseassoc.com

Transferring E & P Risk Assessment Expertise
Instruction • Software Tools • Practical Consultation

Dyna-Drill®
Manufacturers of Drilling Motor Components

- Mud Motor Power Sections (Sizes: 2 7/8" to 11 1/2")
- Coil Tubing Power Sections (Sizes: 1 11/16" to 3 3/4")
- Matrix-3® Coated Bearings
- Precision Machining

www.dyna-drill.com **Power That Lasts™**

Innovative Proppant Technology

OilPlus PROPPANTS

New OilPlus™ Proppants Provide Enhanced Oil Recovery for Your Well.

E-mail us at info@momentive.com **MOMENTIVE**

Compass Directional Guidance, Inc.
Manufacturer & Supplier of MWD & LWD Systems, Including EM & Resistivity

14427 Interdrive West
Houston, TX 77032
832-554-2474
www.compass-mwd.com

Ready to ship kits, full fleet maintenance & 24/7 support

Parts sales, now made easier via our online store

Shop technician & field operator training, at our facility or yours

Scan the QR code for more information

gyro/data

- » High Accuracy Gyro Wellbore Surveying and Guidance
- » Rotary Steerable Automated Drilling Systems
- » Monitor SWD™: Survey While Drilling (Inc, Az, TF)
- » Mud Motor Services and Rentals

Gulf Coast Sales and Operations 24 hour contact
(281) 213-6300 / (832) 667-9450
or see <http://www.gyrodata.com/>

Vibration Technology, Inc.
Workover □ Completions □ Drilling

Leading the industry in stuck pipe recovery.

Shreveport □ New Iberia □ Houston

For more information, log on to:
vibrationtechnology.com

INNOVATIVE TECHNOLOGY FOR REMOVING STUCK TUBULARS

Advanced Ceramics Make the Difference

Breakthrough sand control technology

Innovative thrust bearings

ceradyne, inc.
PetroCeram™

(714) 384-9488 www.petroceram.com

STRESS ENGINEERING SERVICES INC.
13800 Westfair East Drive
Houston, TX 77041-1101
Phone: 281.955.2900
www.stress.com

Engineering Problem Solvers

DESIGN • ANALYSIS • TESTING

Entry Form *Entry Deadline – Friday, September 13, 2013*

SPE-GCS EVENTS 30TH ANNUAL TENNIS TOURNAMENT

Name _____

Gender _____ Company _____

Address _____

City _____ State _____ Zip _____

Phone _____ Email _____

PLAYERS 1 ENTRY FORM PER PLAYER

Tournament Doubles _____ \$125 per person

Mixed Doubles Only _____ \$50 per person

Spouse/Guest/Speaker _____ \$25 per person

Your Rank: Championship A B C

Your T-Shirt Size: M L XL XXL

FRIDAY TOURNAMENT DOUBLES

Are you playing tournament doubles? Yes No

Partner's name: _____

(Partner must send in own entry form)

Partner's Rank: Championship A B C

Do you need a partner? Yes No

THURSDAY MIXED DOUBLES

Are you playing in mixed doubles? Yes No

(Additional \$50 if Mixed doubles partner is not playing in Tournament Doubles.

\$50 MIXED ONLY)

Partner's name: _____

(Partner must send in own entry form)

Partner's Rank: Championship A B C

METHOD OF PAYMENT

Payment: Check Visa MC AMEX DISC

Card Number _____ Expiration Date _____

(If paying with credit card you mail email entry to SPE-GCS Tennis c/o joannehresko@comcast.net)

Name as it appears on card _____

Name of sponsoring company *(If being sponsored)* _____

Amount Enclosed/Amount to Charge *(Make checks payable to SPE-GCS Tennis)* _____

Mail form/check to:

SPE-GCS Tennis

c/o Erin Chang

200 Westlake Park Blvd, 775C

Houston, Texas 77079

If paying by credit card, forms may be e-mailed

To the SPE-GCS tennis treasurer at:

erin.chang@bp.com

SPONSORS

Sponsors are a welcome and essential part of making this event a success. In recognition of their support, sponsors will be identified with special signage and privileges. 100% of the net proceeds raised by the tournament will be applied toward scholarships for the Society of Petroleum Engineers Gulf Coast Section College Scholarship Fund. All sponsors will have their company name on the tournament sponsor board and recognized in the tournament program according to sponsorship levels. Levels of available sponsorships are listed in the table below along with the number of players your company is entitled to register as part of your sponsorship. Separate entry forms are required for each player.

- Platinum Sponsor** **\$5,000**
(Entitled to register 8 tournament players)
- Gold Sponsor** **\$2,500**
(Entitled to register 4 tournament players)
- Silver Sponsor** **\$1,500**
(Entitled to register 3 tournament players)
- Bronze Sponsor** **\$1,000**
(Entitled to register 2 tournament players)
- Court Sponsor** **\$500**
(Entitled to register 1 tournament player)

SPE-GCS also appreciates in-kind donations such as door prizes, gift certificates, ditty bag items, tennis balls, etc.

FRI
June 7

13th Annual Sporting Clays Tournament

Registration

Time Preference AM PM

Team Captain _____ City/State/Zip _____

Company _____ E-Mail _____

Address _____ Phone _____

SPE Member Name /Number _____

Shooter No 2 _____ Shooter No 4 _____

Company _____ Company _____

E-Mail _____ E-Mail _____

Phone _____ Phone _____

Shooter No 3 _____ Shooter No 5 _____

Company _____ Company _____

E-Mail _____ E-Mail _____

Phone _____ Phone _____

METHOD OF PAYMENT

Payment: Check Visa MC AMEX DISC

Card Number _____ Expiration Date _____

Name as it appears on card _____

Signature _____

Email _____

Total to Charge Card _____

(Make checks payable to SPE-GCS)

COST

\$850 per 5-person team
Includes a 100-round course

LOCATION

Rio Brazos Hunting Preserve
4430 Guyler Rd.
Simonton, TX 77476
www.rio-brazos.com

REGISTRATION

Yim Szeto
yimlun@gmail.com
832-816-8966
361-798-3862 Fax

REGISTRATION INFO

Limited to first 700 shooters

At least one shooter must be
a current SPE member

Shooters provide own ammo
(No. 7 ½, 8, 9 shot ONLY)

Starting time and station sent
to team captain only

Sponsors will receive first
consideration

Registration forms should be submitted
to Yim Szeto. If paying by check, please
contact Yim for mailing address.

Tournament Sponsorship

SPONSORSHIP COMMITTEE CHAIRPERSON

Greg Rachal

MI-Swaco a Schlumberger Company

713-628-3341

grachal2@slb.com

- **Diamond Sponsor** **\$7,500**
As a diamond sponsor, your company will be recognized as a Corporate Sponsor of the tournament and the company name will appear on the sponsor board. Your sponsorship entitles you to four (4) complimentary teams in the tournament and V.I.P. parking.
- **Platinum Sponsor** **\$5,000**
As a platinum sponsor, your company name will appear on the sponsor board. Your sponsorship entitles you to two (2) complimentary teams in the tournament and V.I.P. Parking.
- **Gold Sponsor** **\$3,500**
As a gold sponsor, your company name will appear on the sponsor board. Your sponsorship entitles you to one (1) complimentary team in the tournament and V.I.P. parking.
- **Silver Sponsor** **\$2,000**
As a silver sponsor, your company name will appear on the sponsor board. Your sponsorship entitles you to V.I.P. parking.
- **Bronze Sponsor** **\$1,500**
As a bronze sponsor, your company name will be on the sponsor board. Your sponsorship entitles you to V.I.P. parking.
- **Entry Gift Sponsor (limited to 3)** **\$5,000**
As an entry gift sponsor, your company name will be on the sponsor board and on entry gifts (to be determined by committee) handed out to each shooter.
- **Shuttle Cart Sponsor (limited to 3)** **\$2,000**
As a shuttle cart sponsor, your company name will appear on the sponsor board and on the shuttle carts used at the tournament.
- **Shotgun Sponsor** **\$1,200**
As a shotgun sponsor, your company name will appear on the sponsor board. Your sponsorship entitles you to personally present the shotgun on stage at the tournament to the winner.
- **Shooter # Sponsor** **\$1,000**
As a Shooter # Sponsor, your company name will appear on each competitor # that all participants will display.
- **Scorecard Sponsor** **\$1,000**
As a scorecard sponsor, your company name will be on the sponsor board, competitor #, and on each scorecard
- **Corporate Sponsor** **\$500**
As a corporate sponsor, your company name will be on the sponsor board.
- **Hospitality Tent Sponsor (limited to 5)** **\$500**
As a hospitality sponsor, your company name will be on the sponsor board. As part of your sponsorship, you will be allowed to set up at or near the pavilion to provide one of the following: (1) Breakfast, (1) Lunch, (2) Drinks, or (1) Gun Cleaning Service.
- **Station Sponsor** **\$250**
As a station sponsor, your company name will appear on the sponsor board. As part of your sponsorship, you will be asked to set up a tent at an assigned station to provide refreshments for shooters throughout the day.

SEE BACK OF THIS PAGE FOR SPONSORSHIP FORM

In order to receive full advertisement benefit of your sponsorship, your sponsorship form and payment must be received by May 1st, 2013.



EMAIL SPONSORSHIP FORM:

Greg Rachal: grachal2@slb.com

IF PAYING BY CHECK, MAIL TO:

SPE-GCS Sporting Clays
 10777 Westheimer Road, Suite 1075
 Houston, TX 77042

COMMITTEE SPORTING CLAYS

Sponsorship Form

PLEASE CHECK THE LEVEL OF SPONSORSHIP YOU WISH TO CHOOSE

All sponsorship levels will receive next year's tournament information approximately one month before the general membership mail-out. All sponsors receive preference on shooting times when possible. All profits will be used for SPE scholarships, local charities, community service projects, and member services.

- | | | | |
|--|--|---|--|
| <input type="checkbox"/> Diamond Sponsor \$7,500 | <input type="checkbox"/> Bronze Sponsor \$1,500 | <input type="checkbox"/> Shotgun Sponsor \$1,200 | <input type="checkbox"/> Corporate Sponsor \$500 |
| <input type="checkbox"/> Platinum Sponsor \$5,000 | <input type="checkbox"/> Entry Gift Sponsor \$5,000 | <input type="checkbox"/> Shooter # Sponsor \$1,000 | <input type="checkbox"/> Hospitality Tent Sponsor \$500 |
| <input type="checkbox"/> Gold Sponsor \$3,500 | <input type="checkbox"/> Shuttle Cart Sponsor \$2,000 | <input type="checkbox"/> Scorecard Sponsor \$1,000 | <input type="checkbox"/> Station Sponsor \$250 |
| <input type="checkbox"/> Silver Sponsor \$2,000 | | | |

Company _____ Contact Name _____

Mailing Address _____ Phone _____

City/State/Zip _____ Fax _____

METHOD OF PAYMENT

Payment: Check Visa MC AMEX DISC

Card Number _____ Expiration Date _____

Name as it appears on card _____

Signature _____

Email _____

(Card holder's email address required for all credit card payments)

Total to Charge Card _____

(Make checks payable to SPE-GCS)

**DIRECTIONAL
AND
HORIZONTAL
DRILLING
SPECIALISTS**



WWW.NOVADIRECTIONAL.COM

**NITROGEN ✨ WELL TEST ✨ WIRELINE
 WELL OPTIMIZATION
 CONSULTING ✨ FLARESTACK
 PRODUCTION
 SERVICES**



PRIORITY
 ENERGY SERVICES, LLC

www.priorityenergyllc.com
877-317-7467
⊕ COMMITTED TO SAFETY ⊕

Digital Energy & Permian Basin

Thank you to the Digital Energy and Permian Basin Study Groups for their photo submissions this month. For the first time in the history of the SPE-GCS newsletter, we will be issuing a July newsletter. The July Connect will be a recap of the 2012-2013 program year for SPE-GCS. We hope to feature photos from all events throughout this past year as well as selected text from the section's annual report. If you have any photos from your events that you would like us to feature, please send the original, high resolution file to the Connect editor at editor@spegcs.org.



INTEGRATED PRODUCTION SERVICES



Coiled Tubing & Nitrogen
 Eline & Slickline
 Snubbing
 Plunger & Gas Lift
 Flowback & Production Testing
 Pressure Testing & Nipple Up-Down

www.ipsadvantage.com

Engineers - need technical document development help?

- Drilling & completion programs
- Engineering reports & specifications
- Manuals & instructions
- Printing, binding & publication




ZAETRIC®
www.zaetric.com
 713-621-4885
inquiries@zaetric.com

SPE GULF COAST SECTION DIRECTORY

Your guide to your organization leaders

Officers

CHAIR

Steve Baumgartner, Marathon Oil Corp.
281-435-0264
sbaumgartner@marathonoil.com

VICE-CHAIR

Mike Strathman, The Trinity Group, Inc.
713-614-6227
mike-strathman@att.net

SECRETARY

Lucy King, Miller and Lents, Ltd.
713-651-9455
lking@millerandlents.com

TREASURER

Robert Bruant, Jr., BP America, Inc.
281-366-2157
Robert.Bruant@bp.com

VICE TREASURER (ADHOC)

David Tumino, Murphy Oil
281-717-5123
tuminospe@hal-pc.org

CAREER MANAGEMENT

David Flores, Lucas Energy, Inc.
713-528-1881
dflores@lucasenergy.com

COMMUNICATIONS

Valerie Martone, Anadarko
832-636-3196
valerie.martone@anadarko.com

COMMUNITY SERVICES

Xuan (Sun) VandeBerg Harris, Consultant
832-444-5143
xuan.harris@gmail.com

EDUCATION

Gabrielle Guerre, RyderScott
713-750-5491
gabrielle_guerre@ryderscott.com

MEMBERSHIP

Jeanne Perdue, Occidental Oil and Gas
713-215-7348
jeanne_perdue@oxy.com

PAST CHAIR

Hiep Vu, Kosmos Energy
214-593-5095
hvu@kosmosenergy.com

PROGRAMS

David Tumino, Murphy Oil
281-717-5123
tuminospe@hal-pc.org

SOCIAL ACTIVITIES

Scott McLean, Express Energy Services
281-772-4927
smclean@eeslp.com

TECHNOLOGY TRANSFER

Russ Neuschaefer, Schlumberger
281-285-1775
rneuschaefer@slb.com

YOUNG PROFESSIONALS

Sandeep Pdam, ConocoPhillips
713-591-5738
sandeep.pdam@conocophillips.com

DIRECTOR 2012-14

Alex McCoy, Occidental Oil and Gas
713-366-5653
alexander_mccoy@oxy.com

Kevin Renfro, Anadarko

832-636-8613
kevin.renfro@anadarko.com

Wolfgang Deeg, Shell

281-544-8279
wjfdeeg@spemail.org

DIRECTOR 2011-13

Jeff Whittaker, Welltec
281-398-9355
jwhittaker@welltec.com

Marise Mikulis, Baker Hughes, Inc.

281-275-7288
marise.mikulis@bakerhughes.com

Steve Turk, Weatherford

281-260-1300
stephen.turk@weatherford.com

SPE GULF COAST NORTH AMERICA REGIONAL DIRECTOR

Bryant Mueller, Aclaro Softworks, Inc
713-781-2000 x 300
bryant.mueller@aclaro.com

Committee Chairs

AWARDS

James Rodgerson, BP
281-221-4085
james.rodgerson@bp.com

CONTINUING EDUCATION

Dorian Hicks, Rice University
713-444-3230
dth1@rice.edu

ESP WORKSHOP

John Patterson, ConocoPhillips
281-221-5298
john.c.patterson@conocophillips.com

GOLF

Cameron Conway, Cactus Pipe
281-217-0660
cconway@cactuspipe.com

INTERNSHIPS

Gabrielle Guerre, Ryder Scott
713-750-5491
gabrielle_guerre@ryderscott.com

MAGIC SUITCASE

Sean K. O'Brien, Chevron
832-854-3660
sean.obrien@chevron.com

NEWSLETTER

Kim Pinyopusarerk, Energy XXI
713-826-7492
editor@spegcs.org

SCHOLARSHIP

Tanhee Galindo, BASF
713-428-4919
tanhee.galindo@basf.com

SPORTING CLAYS

Tim Riggs, Inwell Directional Drilling
713-201-4290
tim.riggs@inwell.com

TENNIS

Bob Fu, BP
713-591-9808
bob.fu@bp.com

WEB TECHNOLOGY

Subash Kannan, Anadarko
713-385-7242
subash_kannan@yahoo.com

SECTION MANAGER

Kathy MacLennan, SPE-GCS
713-779-9595 x 813
kmaclennan@spe.org

Study Group Chairs

BUSINESS DEVELOPMENT

Steve Mullican, Grenadier Energy Partners
281-907-4120
smullican@grenadierenergy.com

COMPLETIONS & PRODUCTION

Mark Chapman, CARBO Ceramics
281-921-6522
mark.chapman@carboceramics.com

DIGITAL ENERGY

Carol Piovesan, APO Offshore
949-232-6353
cpiovesan@apooffshore.com

DRILLING

Joe Tison, Greene Tweed
281-784-7805
wtison@gtweed.com

GENERAL MEETING

James Maffione, Decision Strategies
713-465-1110
jmaffione@decisionstrategies.com

HEALTH, SAFETY, SECURITY, ENVIRONMENT AND SOCIAL RESPONSIBILITY

Trey Shaffer, ERM
281-600-1016
trey.shaffer@erm.com

INTERNATIONAL

Michael Cherif, ExxonMobil
713-656-7303
michael.h.cherif@exxonmobil.com

NORTHSIDE

Naval Goel
650-307-7267
navalgoel@hotmail.com

PERMIAN BASIN

Dan Tobin, ConocoPhillips
832-486-2924
Dan.C.Tobin@conocophillips.com

PETRO-TECH

Marci Nickerson, Consultant
713-446-3400
mnick52@sbcglobal.net

PROJECTS, FACILITIES, CONSTR.

Bill Kinney, Technip
281-249-2799
wkinney@technip.com

RESEARCH & DEVELOPMENT

Skip Davis, Technology Intermediaries
281-359-8556
skdavis@technologyintermediaries.com

RESERVOIR

Jose Villa, Shell
281-544-2612
j.villa@shell.com

WATER & WASTE MANAGEMENT

Joseph Kilchrist, Ziff Energy
713-302-2727
jkilchrist@sbcglobal.net

WESTSIDE

Alex McCoy, Occidental Oil & Gas
713-366-5653
alexander_mccoy@oxy.com

CONNECT

Information

Newsletter Committee

CHAIRMAN | Kim Pinyopusarerk
editor@spegcs.org

AD SALES | Pat Stone
starlite1@sbcglobal.net

BOARD LIAISON | Valerie Martone

EDITOR/DESIGN | Deuce Creative
deucecreative.com

SPE Houston Office

GULF COAST SECTION MANAGER

Kathy MacLennan | kmaclellan@spe.org

GCS ADMINISTRATIVE ASSISTANT

Sharon Harris | sharris@spe.org

HOURS & LOCATION

10777 Westheimer Road, Suite 1075

Houston, Texas 77042

P 713-779-9595

F 713-779-4216

Monday - Friday 8:30 a.m. to 5:00 p.m.

Photo Submissions

We are looking for member photos to feature on the cover of upcoming issues! Photos must be at least 9" by 12" at 300 DPI. Email your high resolution picture submissions to:
editor@spegcs.org

Change of Address

To report a change of address contact:

Society of Petroleum Engineers

Member Services Dept.

P.O. Box 833836

Richardson, Texas 75083-3836

1.800.456.6863

service@spe.org

Contact

For comments, contributions, or delivery problems, contact editor@spegcs.org.



Neal Adams Services

A Proud Tradition of Well Control Excellence

Neal Adams
PhD, P.E.

Professional Services

Well Control Advisory Services, Relief Wells, Capping,
Contingency Planning, Safety

16434 De Lozier Street

Houston, Texas 77040

E-mail: nealadams@comcast.net

Tel: 713-849-4323

Fax: 713-849-1943

Cell: 713-817-6013

Polar Star



Oilfield Consultants

Guiding your projects along the right path

Call us for help with:

Downhole equipment designs

Completion design development

Equipment selection

Marketing plans

Sales collateral

Sales promotion

Contact: James Garner

Phone: (281) 797-5186

Fax: (281) 485-7078

P.O. Box 3462, Pearland, TX 77588

Email: james.garner@polarstarconsultants.com

Web Site: www.polarstarconsultants.com

Directionally challenged?

If your directional drilling program is more challenging than you expected, maybe you need a new directional driller. Maybe you need Ryan Directional Services, Inc.

Ryan has experience in virtually every important oil and gas shale play. We know the potential roadblocks and how to address them before they cost you money. And that takes drilling to a new level of efficiency.

Call Ryan at 281.443.1414 and see how our directional drilling program will change your experience from challenging to rewarding.

www.nabors.com



NON-PROFIT ORGANIZATION
U.S. POSTAGE PAID
PERMIT NO. 6476
HOUSTON, TX

SOCIETY OF PETROLEUM ENGINEERS
GULF COAST SECTION

10777 Westheimer Road
Suite 1075
Houston, TX 77042

CALENDAR

June 2013

| Sunday | Monday | Tuesday | Wednesday | Thursday | Friday | Saturday |
|--------|--------|---------|-----------|------------------------|----------------|----------|
| | | | | | | 1 |
| | | | | Research & Development | Sporting Clays | |
| 2 | 3 | 4 | 5 | 6 | 7 | 8 |
| | | | | Board Of Directors | | |
| 9 | 10 | 11 | 12 | 13 | 14 | 15 |
| 16 | 17 | 18 | 19 | 20 | 21 | 22 |
| 23/30 | 24 | 25 | 26 | 27 | 28 | 29 |