



Gulf Coast Section

FEBRUARY  
2015

# CONNECT

SPE GULF COAST SECTION NEWSLETTER

**EARLY PRODUCTION  
SYSTEMS - WHEN DO  
THEY MAKE GOOD SENSE  
FOR YOUR PROJECT?**

GENERAL MEETING P.17

**FINDING AND WORKING  
WITH SMALL TECHNOLOGY  
COMPANIES**

RESEARCH & DEVELOPMENT P. 9

**LOST CIRCULATION RISK  
MITIGATION – EFFICIENT  
OPERATIONAL STRATEGIES**

DRILLING P. 13

**GRANITE WASH  
OPTIMIZATION –  
VALIDATING COMPLETION AND  
PRODUCTION TECHNIQUES**

WESTSIDE P. 23

**1ST ANNUAL SPE-GCS  
OILSIM COMPETITION  
FUNDRAISER**

P. 32

SPEGCS.ORG

# CHAIR'S CORNER



**JEANNE PERDUE**  
2014 - 2015 SPE-GCS Chair



Houston is not the Oil Capital of the World because we have the most oil; we are the Oil Capital of the World because we have the oil know-how – a critical mass of it! If we want to continue to be such, we need to develop more “home-grown” engineers. That means we must invest our time and our money in Science, Technology, Engineering, and Mathematics (STEM) initiatives.

Here are some sobering statistics that were shared at the Engineering, Science and Technology Council of Houston Leadership Retreat by former NASA astronaut Bonnie Dunbar, who heads up the University of Houston STEM Center:

- 70% of the PhD candidates in US universities are from other countries – and will go back home after earning their degrees.
- China has 10 times the number of US engineering graduates, and India has four times as many.
- The US ranks #27 of developed countries in proportion of college students earning science or engineering degrees.
- A 2012 report to the US President titled “Engage to Excel” stated we need 1 million more college graduates with STEM degrees.
- One-third of Houston’s jobs require graduates with STEM degrees. We are the #5 city in the US in terms of demand for such grads, but #72 in terms of supply.
- Of Houston’s current STEM-related workers, 24% were born in other countries, 38% were born in other states, and 38% were born in Texas.

Our Section’s Community Services Committee supports a variety of STEM programs to help develop future SPE members. Here are some events that need volunteers and judges:

- Science Engineering Fair of Houston needs 600 judges, Sat., Feb. 22 at the University of Houston Alumni Center. Register at [www.sefhouston.org](http://www.sefhouston.org). SPE Gulf Coast Section needs several judges of our own to award 1st, 2nd, and 3rd prizes for science fair projects dealing with oil or geoscience, as we do each year. We also donate \$2,500 as an annual sponsor of this event.
- GEMS - Girls Exploring Math and Science, Sat., Feb. 21, 9 am to 1 pm, Houston Museum of Natural Science. Email [kfriedemann@hmns.org](mailto:kfriedemann@hmns.org).
- Serve as a high school student tour guide at OTC, Thurs., May 7, NRG Center. Email [energyed@otcnet.org](mailto:energyed@otcnet.org) or call 713-457-6873.
- All-Earth Ecobot Challenge, Sat., May 16, NRG Park. Email Doug Kleiner at [dkleiner@hcde-texas.org](mailto:dkleiner@hcde-texas.org), or call 713-696-8290.

I encourage you to invest your time, talent, and treasure in STEM activities that will inspire school children to think that being an engineer is really pretty cool!



Accepting the President’s Award for Section Excellence from 2014 SPE President Jeff Spath at the President’s Luncheon at the SPE Annual Technical Conference & Exhibition in Amsterdam.



Presenting the Golden Egg Award to advertising sales star Pat Stone for selling \$500,000 of ads for our fabulous – and profitable! – Connect newsletter.

*Love, Jeanne*

# CONTENTS

## STUDY GROUPS

- 9** **Research & Development**  
2.05.2015  
Finding and Working with Small Technology Companies
- 11** **Northside**  
2.10.2015  
MPD Techniques Optimize HPHT Well Control
- 13** **Drilling**  
2.11.2015  
Lost Circulation Risk Mitigation - Efficient Operational Strategies
- 15** **Projects, Facilities & Construction**  
2.11.2015 - Spring Series Session II  
Crude and Refined Product Metering: Meter Selection for Loading/Unloading Applications and Meter Proving
- 17** **General Meeting**  
2.12.2015  
Early Production Systems - When Do They Make Good Sense for Your Project?
- 19** **Completions & Production**  
2.18.2015  
Optimizing Hydraulic Fracture Performance in the Eagle Ford Oil Window - More Proppant is Better

**21** **Projects, Facilities & Construction**  
2.18.2015 - Spring Series Session III  
Challenges and Solutions in Multiphase Flow Measurement; for Onshore, Offshore and Subsea Applications

**23** **Westside**  
2.18.2015  
Granite Wash Optimization - Validating Completion and Production Techniques

**25** **Reservoir**  
2.19.2015  
Enhanced Recovery in Unconventional Liquid Reservoirs by Use of CO<sub>2</sub>

**27** **Business Development**  
2.25.2015  
Natural Gas - Have the Contrarians Finally Been Vindicated?

**29** **Projects, Facilities & Construction**  
02.25.2015 - Spring Lecture Series IV  
An In-Depth Comparison of Four Gas Measurement Technologies: Orifice, Turbine, Ultrasonic and Coriolis

## COMMITTEES

**31** **HSSE-SR and Young Professionals**  
2.17.15  
SPE Gulf Coast Night at the Movies

**32** **Auxiliary**  
2.13.15



SPE-GCS 1st Annual OilSim Competition Fundraiser

4.10.15

32

**33** **1st Annual SPE-GCS Scholarship Fundraising Poker Tournament**  
3.28.2015

## MORE

**31** **New Board Members**

## IN EVERY ISSUE

**5** **SPE-GCS December Membership Report**

**6** **Then & Now**  
Buddy Woodroof

**34** **Event Recap**  
Petro Bowl + More

**37** **Student Chapter Section**  
TAMU-SPE

**38** **SPE-GCS Directory**

## BOARD OF DIRECTORS MEETING

### THURSDAY FEBRUARY 19TH / 7:30 AM TO 10:30 AM

*Location* **SPE HOUSTON OFFICE**

10777 Westheimer Rd., Suite 1075, Houston, TX 77042

*Event Contact* **SHARON HARRIS**

713-457-6821 / 713-779-4216 FAX / sharris@spe.org



Reclaim Your Time.

# Entero<sup>®</sup> MOSAIC<sup>™</sup>

Reserves, Economics, and Declines Software

Isn't it time to stop manipulating data through the backend, creating SQL queries to report in Excel, questioning your application security, getting frustrated with poor scenario comparisons, or using 3rd party tools to enter and edit data?

Do your work faster, with less effort. Entero MOSAIC is **one comprehensive solution** that supports corporate, project, and well level processes for reserves, economics, and declines.

- ◊ **SPEED:** Go from weeks to hours in entry, editing, evaluating, reconciling, and reporting
- ◊ **EFFICIENCY:** Experience up to 50% in productivity gains
- ◊ **INTEGRITY:** Have confidence in your data with better visibility
- ◊ **TRUST:** Improve security through role based user/data management
- ◊ **INSIGHT:** Built-in stored results with scenario comparisons at the portfolio level

Learn more at [www.entero.com/mosaic](http://www.entero.com/mosaic), or call 713.446.4633.

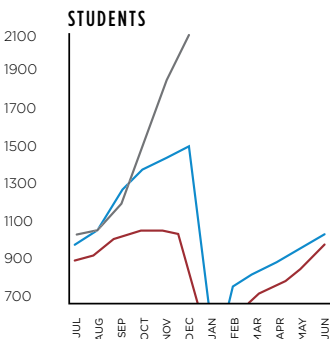
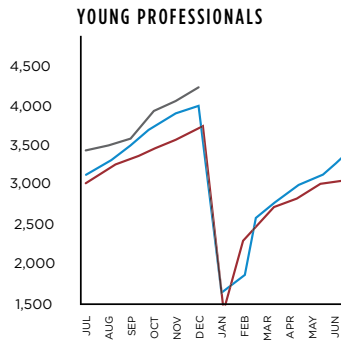
**entero**  
energy software

# SPE-GCS MEMBERSHIP REPORT December 2014

**12.2014** | **11.2014**  
 TOTAL: 16,787 | TOTAL: 16,535  
 YP: 4,070 | YP: 3,938

	12.2014		11.2014	
SPE-GCS MEMBERS	TOTAL	YP	TOTAL	YP
New Members	128	67	196	112
Transferred to Section	2	1	3	1
<b>Unpaid</b>	<b>2,678</b>	<b>1,047</b>	<b>2,799</b>	<b>1,094</b>
STUDENT MEMBERS	PAID	UNPAID	PAID	UNPAID
Texas A&M	1,363	149	1,326	150
Rice	82	22	82	21
HCC	69	20	62	20
UH	520	155	496	157
<b>Total</b>	<b>2,086</b>	<b>349</b>	<b>1,966</b>	<b>348</b>
<b>Total Paid/Unpaid</b>	<b>18,873</b>	<b>3,027</b>	<b>18,501</b>	<b>3,147</b>
<b>% Paid</b>	<b>86.2%</b>		<b>85.5%</b>	

2011-2012    2012-2013    2013-2014



**DON'T MISS  
OUT – RENEW  
YOUR DUES  
TODAY!**

# EXCELLENCE DELIVERED.

PROOF

It's what we do. It's who we are.

Casedhole Solutions  
Directional Services  
Coiled Tubing  
Fracturing



Experience you trust. Service you expect.

[cjenergy.com](http://cjenergy.com)



C&J Energy Services

## WELLSITE GEOSCIENCE SERVICES



**When time is money,  
Wellsite Geoscience is  
money well spent.**

Whether you're exploring a basin, producing a well or completing a shale play, time is money. That's why Weatherford Laboratories brings a suite of formation evaluation technologies right to the wellsite. Utilizing mud gas and cuttings, these technologies provide detailed data on gas composition, organic richness, mineralogy and chemostratigraphy in near real time. As a result, operators now have an invaluable tool to assist with sweet spot identification, wellbore positioning, completion design and hydraulic fracturing. We call it Science At the Wellsite. You'll call it money well spent.

**SCIENCE AT THE WELLSITE™**  
[www.weatherfordlabs.com](http://www.weatherfordlabs.com)

Formation Evaluation | Well Construction | Completion | Production

©2013 Weatherford. All rights reserved.



# THEN & NOW

COLUMN BY BUDDY WOODROOF

## FEBRUARY 1945

Russian Army advances in recent weeks have swept over all the oil fields and refineries in Poland and Hungary, leaving Germany only the oil fields and refineries near Vienna, Hamburg, and a few insignificant fields in other parts of Germany, Austria, and Czechoslovakia. Virtually all that Germany is left with are their underground storage and synthetic fuel plants.

Due to war-time restrictions and extremely low temperatures in the eastern U.S., gasoline, automobile tires, and fuel oil supplies will reportedly remain tight through at least the balance of 1945.

Two well-known names to Houstonians of the day are in the news, as Wallace Pratt resigns as vice president of Humble Oil's parent company, Standard Oil of New Jersey, and is replaced by former AIME president and Lucas Medal winner John Suman, previously vice president of Humble Oil.

A new method of electrical prospecting for petroleum involving the measurement of subsurface electrical potentials, developed by the U.S. Naval Research Laboratory, is approved for a patent.

**East Texas crude oil - \$1.25/bbl**

## FEBRUARY 1975

Texas Senator and soon-to-be contender for the 1976 Democratic nomination for President, Lloyd Benson, goes to bat for the independent oil producer by sponsoring a bill that would do away with much of the foreign tax benefits and domestic percentage depletion while keeping the depletion allowance for the first 3,000 bbl/day of production by the independents.

Meanwhile next door in the House, Texas Republican Representative Bill Archer is battling in the House Ways and Means Committee to retain the domestic percentage depletion for all operators.

The U.S.G.S. and the Department of Interior press the oil industry to expedite subsea completion technology development for use in certain offshore leases.

A noted Canadian oil executive states that the price of Canadian crude oil must reach a minimum of \$13/bbl if Canada is to maintain its petroleum self-sufficiency.

**U.S. active rig count - 1,603**

## FEBRUARY 2005

As a result of strong oil and gas prices and the sizable amounts of cash being generated, E&P executives forecast strong merger and acquisition activity in 2005.

Despite opposition by New Mexico Governor and former Energy Secretary Bill Richardson, the BLM opens limited leasing on environmentally sensitive public lands in the Chihuahuan Desert in Otero and Sierra Counties, New Mexico.

BP begins construction of a 9MW wind farm at its oil and oil products import-export terminal at the port of Amsterdam. (No, the workers there will not be wearing wooden shoes).

Light sweet crude oil - \$46.08/bbl;  
Natural gas - \$6.11/MMbtu;

**U.S. active rig count - 1,280**

## THE REST OF THE YARN

This month we continue our look back at the life and times of industrialist and philanthropist Andrew Carnegie.

**O**ne of Andrew's skills was harnessing brainpower—he was one of the first U.S. industrialists to pay close attention to laboratory research. Another skill was developing a management team. His management team was strong. One of his key foremen was the legendary William "Captain Bill" Jones, who had a fierce love for the smoke, stench, clamor, and drama of the steel mill, and he infused his men with his excitement. As one historian wrote about Jones, he savored every moment of his working life, even when he was "seared by the heat of the blast furnaces, deafened by the noise of metal rolling over metal, and

nearly blinded by the white, incandescent heat of molten iron."

Carnegie's steel became the structural basis of American greatness, the foundation of the nation's railroads, factories, skyscrapers, and refineries. And in the process, Andrew Carnegie became a multi-millionaire.

Carnegie felt divided in his attitude toward the rugged men who made his steel. On the one hand, his idealistic side led him to support an enlightened labor policy, such as the creation of the industry's first eight-hour workday in 1877. On the other hand, he was forever plagued by the need to cut costs to stay competitive. He was also a bit of a martinet—

he never quite developed empathy for Americans who struggled with low wages, perhaps because his own success had come so quickly. In 1892, in the days before unions were protected by law, Carnegie approved a strategy of breaking up a steelworker's union at his Homestead mill. A terrible strike ensued, and 10 people died in the resulting violence, including strikers and Pinkerton detectives. The union was eventually crushed.

It was without a doubt the worst moment of Carnegie's career. He hadn't expected armed conflict and was horrified by it. He was visiting Scotland at the time, but despite his absence, he was deemed to be the responsible party and took withering criticism from many quarters. He hated that. He wanted to be loved. He dealt with the pain of the Homestead strike by blurring its details in his memory in a way that reduced his culpability. Perhaps he could not have lived with his idealistic side if he had not done so.

Next month, Andrew begins to enjoy the fruits of his labors.

---

**THEN & NOW**  
F E B R U A R Y  
**QUIZ**

Which of the following groups of U.S. oil companies failed to earn a combined \$1 million in net profit in calendar year 1974: a) Kerr McGee, Occidental, and Phillips b) Tenneco, Atlantic Richfield, and Getty c) Standard Oil of Indiana, American Petrofina, and Murphy; or d) Sun, Continental, and Tenneco.

**ANSWER TO  
JANUARY'S QUIZ**

*In 1904 Standard Oil entered Romania with a producing and refining subsidiary, its first oil venture outside North America except for marketing.*

**CONGRATULATIONS TO  
DECEMBER'S WINNER**

Claire Harnsberger with Oil Plus

---

If you would like to participate in this month's quiz, e-mail your answer to [contest@spe.org](mailto:contest@spe.org) by noon, February 15. The winner, who will be chosen randomly from all correct answers, will receive a \$50 gift card to a nice restaurant.

# BroadBand Sequence

FRACTURING TECHNIQUE



Composite fluid temporarily isolates fractures at the wellbore.

BroadBand Sequence technique stimulates more clusters (blue) than conventional stimulation techniques.



Mark of Schlumberger. © 2015 Schlumberger. 14510107

## Marathon Oil increases productivity in Eagle Ford Shale well by 21%.

The BroadBand Sequence\* fracturing technique effectively stimulated perforation clusters that would not have produced by conventional techniques. Enabled by a proprietary engineered composite fluid of degradable particles and fibers, the BroadBand Sequence technique increased production by 21% over 115 days.

Read the case study at  
[slb.com/BroadBand](http://slb.com/BroadBand)

**Schlumberger**



# Reevaluate your deepwater development.



Understand your deepwater environment and maximize production faster with the best information available.

From evaluation and sampling, to imaging and magnetic resonance, our complete portfolio of reliable wireline technologies is second to none. And when you add our decades of field-proven experience meticulously planning projects, thoroughly interpreting data, and efficiently deploying our innovative wireline technologies in the Gulf of Mexico deepwater environment, you simply get the best evaluation to help you optimize your development program.

Call us or visit [BakerHughes.com/GoM-Wireline](http://BakerHughes.com/GoM-Wireline) and learn how reevaluating your options can optimize your evaluation.

+1 713-268-6218 or 24/7 Deepwater Operations: +1 337-837-1101





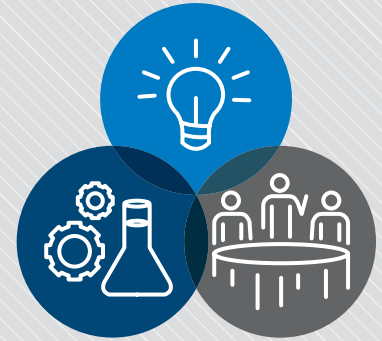
## RESEARCH &amp; DEVELOPMENT

# Finding and Working with Small Technology Companies

The February R&D lunch will focus on how to find, evaluate, contract and work with small technology companies that have unique technologies that could advance your company's new product and/or technology development efforts. Christina Karapataki from Schlumberger will provide insights on how she approaches small technology companies to help further Schlumberger's new product and technology agenda. In addition, we will have a couple of small technology companies discuss their technologies and their perspectives on finding and working with large company partners.

## CHRISTINA KARAPATAKI

Christina Karapataki is a Venture Principal in the Early Stage Technology Investments group at Schlumberger Technology Corporation. In this role she works closely with Schlumberger Business Units and Engineering Centers to assess joint development opportunities and lead investment evaluations. She specializes in early stage investments in energy, advanced materials and sustainability technologies. Prior to her current role, Christina worked for ExxonMobil Gas & Power Marketing in both the European and North America offices, and gained venture experience evaluating oil and gas technology investments with Venrock Management LLC in 2011. She was also a Business Development Associate for Oscomp Systems, a start-up company developing natural gas compression systems. Christina's background is in Chemical Engineering with B.A. and M.Eng. degrees from the University of Cambridge. She is a graduate of MIT, with an S.M. degree in Energy Technology and Policy, where her research at the MIT Energy Initiative focused on evaluating water management technologies for shale gas production operations.



## EVENT INFO

*Thursday*  
**2.05.15**

11:30 AM TO 1:00 PM

## SPEAKER

Christina Karapataki  
Venture Principal, Early Stage  
Technology Investments Group  
Schlumberger

## LOCATION

Norris Conference Center  
Westchase  
9990 Richmond Avenue  
Suite 102  
Houston TX 77042

## EVENT CONTACT

Skip Davis  
281-359-8556  
skdavis@  
technologyintermediaries.com

## MEMBERS

\$35

## NON-MEMBERS

\$40

# PHDWIN™

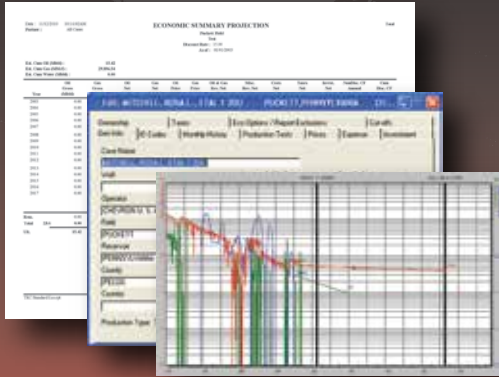
Integrated Economics & Decline Curve Analysis

**NOW EVEN MORE POWERFUL WITH**

# PHDRMS™

Reserves Management System

The *complete solution* for evaluating, managing, and reporting reserves and performance data.



Schedule an **online** presentation  
**TODAY!**

TRC Consultants, LC    888-248-8062    [www.phdwin.com](http://www.phdwin.com)

**no longer flying under the radar**

**Precision**  
Directional Services  
[precisiondrilling.com/directional](http://precisiondrilling.com/directional)

## Rose & Associates

Courses    Consulting    Software

**Unconventional Resource Valuation and Assessment Course**  
(3 to 5 days)

**UCRA Software**  
To model, value and risk drilling in resource plays

[www.roseassoc.com](http://www.roseassoc.com)

**Is challenging project documentation draining your resources?**

**WE can help with;**

- ✓ Technical Writing
- ✓ Data Book Compilation
- ✓ Project Management
- ✓ Printing & Binding

**ZAETRIC®**

281-298-1878    [www.zaetric.com](http://www.zaetric.com)

## NORTHSIDE

# MPD Techniques Optimize HPHT Well Control

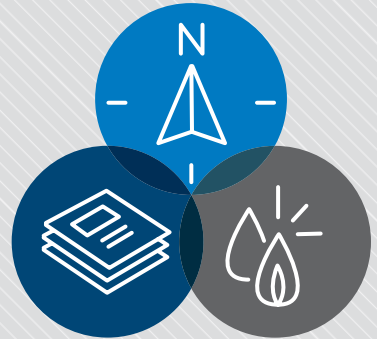
An HPHT well in East Texas with a reservoir BHT of 334°F and approximately 13,900 psi reservoir pressure proved extremely challenging. Managed Pressure Drilling (MPD) was originally selected to avoid a classic “Kick-Loss-Kick” scenario while drilling deep into the Austin Chalk formation. One primary goal of MPD, ascertaining the downhole pressure environment limits, was accomplished, but the greatest benefit was achieved by handling several well control incidents that occurred in the HPHT reservoir section.

As HPHT drilling technology matures, the line between flow control and well control begins to blur. Rather than transitioning back and forth, drilling and well control activities tend to become parts of a single process. This process must take into account the effect of variations in the drilling fluid properties, use of the entire active pit system while circulating out kicks, and handling uncertainties in the downhole pressure regime. Knowledge of the pressure and temperature limits and the effects of HPHT on composition of pressure-sealing elements in all surface and downhole tools proved critical. Optimization of alternative casing design for well control while circulating a kick (influx) and using unconventional drilling techniques will also be described.

### ROBERT J. ELMORE



Robert J. “Bobby” Elmore is a senior drilling engineer and completions specialist with Signa Engineering Corp. He received a B.S. degree in petroleum engineering from Texas A&M University in 1972. Mr. Elmore specializes in Managed Pressure Drilling (MPD), UnderBalanced Operations (UBO), MudCap Drilling (MCD), casing drilling, coiled tubing intervention and other critical well control operations. He has worked around the globe, including China, Russia (Sakhalin Island), Venezuela, Alaska, Mexico and the North Sea, as well as domestically.



### EVENT INFO

*Tuesday*  
**2.10.15**

12:00 PM TO 1:30 PM

### SPEAKER

Robert J. “Bobby” Elmore  
Senior Drilling Engineer  
Signa Engineering Corp

### LOCATION

Greenspoint Club  
16925 Northchase Dr.  
Houston, Texas 77060

### EVENT CONTACT

Sumitra Mukhopadhyay  
281-784-5742  
smukhopadhyay  
@superiorenergy.com

### MEMBERS

\$35 / \$50 WALK-IN

### NON-MEMBERS

\$40 / \$50 WALK-IN

## Integrated Energy Services, Inc.

**Robert Barba**  
Petrophysicist

Log Analysis  
Completion Optimization

500 N. Capital of TX Hwy  
Building 4-150  
Austin, TX 78746  
C: (713) 823-8602  
F: (713) 583-9400  
RBarba75@gmail.com

[www.integrated-energy-services.com](http://www.integrated-energy-services.com)

# CoolSet™

Curable Resin-Coated Proppant

## Prevent proppant flowback without activator

CoolSet proppant – frac fluid and breaker friendly – is your no-activator, low-temperature solution to enhance conductivity and increase hydrocarbon production.

Get more from your wells at [FairmountSantrol.com/CoolSet](http://FairmountSantrol.com/CoolSet)



For direct technical data  
CoolSet Product Director  
Taso Melisaris  
713.234.5450 x 42271  
[Technology@FairmountSantrol.com](mailto:Technology@FairmountSantrol.com)



**Still GROWING...**  
and revolutionizing Downhole Video Diagnostic services

See what others can only imagine! Experience reality with our patented LiteSabre® diffused lighting and up to 1000 lumens in an OptiGel™ clear window strategically displaced to the problem area downhole.

- E-line Down and Side View Video Surveillance
- 16 Hours of Slickline or CT-Deployed Memory Video
- 30 frames P/S, High-Definition Color Video Recording
- Shallow Work Video

Bringing new technology to the challenges of downhole image capture.




[www.abrado-intl.com](http://www.abrado-intl.com)  
Email us at: [info@abrado-intl.com](mailto:info@abrado-intl.com)



1.832.300.3660  
[askus@top-co.us](mailto:askus@top-co.us)  
[www.top-co.us](http://www.top-co.us)

Fit-for-Purpose Casing, Cementing, and Completion Solutions®



Type 346 Top Reach Glider®

Reduced Friction · Long Length · No Blade Overlap  
Thermoset Polymer · Wear Resistant

The Archetype for all Polymer Centralizers

## DRILLING

# Lost Circulation Risk Mitigation - Efficient Operational Strategies

Lost Circulation when handled appropriately could be a simple or difficult problem, but often it is mis-handled and is made to look complex. So, this presentation is aimed at discussing operational strategies to un-complex lost circulation employing a preventive or remedial approach. Just like in dealing with any other problem, having a proactive plan always saves money and time. In this presentation, a preventive strategy to deal with lost circulation that includes getting on-board right from well design stage, best drilling practices and best possible LCM application techniques will be discussed.

Just having a plan does not mean that it works all the time. Every well is different and one plan might not work on another well. So, this presentation will also discuss the contingency plan or remedial strategy to battle any un-expected losses. The benefits of having a loss contingency plan and the importance of knowledge capture on LCM solutions (both success and failures) will also be discussed. With the above preventive and remedial operational strategies, it is expected that lost circulation can be dealt with in a much simpler way.

## SHARATH SAVARI



Sharath Savari is the Global Technical Advisor for Lost Circulation Prevention & LCM Applications at Halliburton Baroid in Houston, TX. He is the subject matter expert (SME) for Halliburton on Lost Circulation Prevention, LCM Solutions and LCM field applications. He has 7 years of experience in the oil and gas service industry, all with Halliburton. Prior to this role, he was involved in Research & Development at Halliburton Technology Centers in India & Houston and was mainly focused in the area of Lost Circulation Control and Mitigation methods, Wellbore Strengthening and Wellbore Stability. He has M.S. Degree in Chemical Engineering from Indian Institute of Technology (IIT) Kanpur, India.

He has presented multiple papers in various SPE/AADE conferences on the subject of lost circulation control. He has been on the Steering Committee for 2014 SPE ATW on Lost Circulation held in Dubai, 2014 AADE Fluids conference, held in Houston and 2012 SPE ATW on Wellbore Integrity held in Abu Dhabi. He is currently on the Steering Committee for SPE/IADC Drilling Conference and Exhibition, London 2015 and SPE ATW on Lost Circulation, Dubai 2015.

**Reaching Deeper**  
With the largest fleet of deep, high-pressure coiled tubing, coupled with basin-specific expertise

**Going Further**  
To find solutions to our customers' wellsite challenges, safely and efficiently

**That's the IPS Advantage**

Integrated Production Services [www.ipsadvantage.com](http://www.ipsadvantage.com)



### EVENT INFO

*Wednesday*  
**2.11.15**

11:30 AM TO 1:00 PM

### SPEAKER

Sharath Savari  
Global Technical Advisor  
Halliburton

### LOCATION

Petroleum Club  
800 Bell St  
Houston, Texas 77002

### EVENT CONTACT

Mojtaba P. Shahri  
713-849-1818  
[mojtaba.pordelshahri@weatherford.com](mailto:mojtaba.pordelshahri@weatherford.com)

### MEMBERS

\$35

### NON-MEMBERS

\$40

# THE MISSING PIECE TO MAXIMIZE YOUR PRODUCTION



You can't put together the puzzle without all the pieces. MicroSeismic's completions evaluation services and real-time microseismic monitoring help you fill in the blanks with recommendations on improved well spacing and stage length, frac coverage area, and analysis on how each well is completed. Our goal is to provide transparent results that you can rely on to maximize your production.



[MicroSeismic.com/GCSPE](http://MicroSeismic.com/GCSPE) | 866.593.0032

**PATENTED proNova™ by TDE**

## DRILLING PERFORMANCE

**CREW PERFORMANCE MEASUREMENTS**

**AUTOMATIC OPERATIONS DETECTION**

**INVISIBLE LOST TIME DETECTION**

281.755.7595  
[www.pronova-tde.com](http://www.pronova-tde.com)

## Reservoir to Refinery.

Innovative solutions for the life of your well.

- Resin Coated Proppants
- Performance Additives
- Production Chemicals

E-mail us at [oilfield@hexion.com](mailto:oilfield@hexion.com).

Momentive Specialty Chemicals Inc. is now Hexion.

# VIKING

ENGINEERING, L.C.

CRITICAL WELL ENGINEERING CONSULTING SERVICES

VIKING'S TEAM OF HIGHLY TRAINED PETROLEUM PROFESSIONALS LEND THEIR EXPERIENCE TO CREATIVE WELL DESIGNS.

WE CAN HELP PLAN AND EXECUTE YOUR TOUGH WELLS.

- PETROLEUM CONSULTING
- HPHT WELL DESIGN
- APB ANALYSIS
- PROJECT MANAGEMENT
- FAILURE ANALYSIS
- TRAINING

VISIT OUR WEBSITE: [WWW.VIKINGENG.NET](http://WWW.VIKINGENG.NET)  
OR CALL: (281) 870-8455 IN HOUSTON

PROJECTS, FACILITIES & CONSTRUCTION

# Crude and Refined Product Metering: Meter Selection for Loading/Unloading Applications and Meter Proving

Petroleum and its products bought and sold on the worldwide market may be transported over thousands of miles and change ownership many times from the well head to the end user. Each time the product changes ownership, a “custody transfer” is completed and both buyer and seller expect their asset exchange to be accurately measured. The dynamic measurement provided by most modern measurement systems is a convenient and accurate means to measure valuable petroleum products. Selecting the right meter for the application and ensuring the proper design of the meter system is imperative to guarantee accurate measurement with a high level of confidence at the lowest cost of ownership.

The basic operating principles of four metering technologies: Positive Displacement (PD) Meters, Coriolis Mass Meters, Turbine Meters, and Ultrasonics will be discussed and the application range of each one of these technologies in terms of viscosity and flow rate will be covered.

Also, key to custody transfer is the verification or “proving” of the meters under actual operating conditions. Proving assures both parties in the custody transfer transaction that the meters are accurate and repeatable. Proving fundamentals and the most common types of prover types will be covered as well.

## TONY PETITTO

Tony Petitto has more than 30 years of experience with flow measurement and liquid custody transfer applications. Tony started in Field Service working with tank gauging systems, automatic sampling systems, and bunker blending systems. Since moving from the practical side where he witnessed and suffered from the effects of poor meter selection, he has been a champion of proper metering system selection. By providing training in meter systems design, specification, operation and proving (calibration), Tony is ensuring fit-for-purpose metering systems are being selected for the various metering applications found in the oilfield from North to South America and beyond. Tony has a BS in Electrical Engineering and has spent 14 years with FMC Technologies in Technical Sales and Training.

## REMINDER: SPRING SERIES SESSION I

# Liquid Metering Selection

WEDNESDAY

**2.4.15**

4:30 PM TO  
6:00 PM

WHAT YOU NEED TO KNOW ABOUT ATTAINING AND MAINTAINING ACCURATE FISCAL AND ALLOCATION METERING SYSTEMS

### SPEAKER

Del Major  
Liquid Measurement Advisor  
Shell E&P

### LOCATION, COST, & CONTACT

Same as Session II



## SPRING SERIES SESSION II

Wednesday  
**2.11.15**

4:30 PM TO 6:00 PM

### SPEAKER

Tony Petitto  
Technical Sales Manager  
FMC Technologies

### LOCATION

Wood Group Mustang  
Clydesdale Building Events Room  
17320 Katy Freeway  
Houston, TX 77094

### EVENT CONTACT

Brad Nelson  
832-230-8246  
bnelson@maxoilsolutions.com

### MEMBERS

\$35 per lecture

### NON-MEMBERS

\$45 per lecture

### STUDENTS

\$15 per lecture

# Take the Shock Out of Your Drilling Operations

Keep your drill bits running longer and deeper with the APS Active Vibration Damper™ system

- Adapt to a continuously changing environment
- Suppress undesired drilling dysfunctions
- Extend bit & drilling tool life
- Improve overall rate of penetration
- Significant cost/foot savings



For more information,  
visit [www.aps-tech.com](http://www.aps-tech.com)  
or call us at 281.847.3700



*Delivering Award-Winning, Technology-Driven Engineered Solutions to the Oil & Gas Industry*



World-Class Completions & Production Solutions

- Completion Fluids Products/Services
- Well Testing Equipment/Services
- Fluids Management



© 2014 TETRA and the TETRA logo are registered trademarks of TETRA Technologies, Inc. All rights reserved.

[tetrathec.com](http://tetrathec.com)

VIBRATION TECHNOLOGY  
LEADING THE INDUSTRY IN STUCK PIPE RECOVERY  
INNOVATIVE TECHNOLOGY FOR REMOVING STUCK TUBULARS

- + WORKOVER
- + COMPLETIONS
- + DRILLING



Vibration Technology

[www.layne.com](http://www.layne.com)



**NOW IN THE WOODLANDS, TX**

Providing routine and special core analysis on whole core, plugs, and cuttings.

[www.trican.us](http://www.trican.us) | 832-943-5103

TRICAN GEOLOGICAL SOLUTIONS



1274/121114



## GENERAL MEETING

# Early Production Systems - When Do They Make Good Sense for Your Project?

This presentation will discuss the design aspects that drive value of an Early Production System (EPS) and introduces a stepwise approach for teams to follow to frame and evaluate dynamic tests and EPS design options using a generic deepwater case example. Alternatives ranging from a drill stem test (DST) to an EPS to a tie-back are compared and sensitized to understand under which conditions each option might be worthwhile, ultimately providing information for an informed decision.

Many teams believe an EPS will be valuable for their offshore projects, but struggle when asked to make the business case for an EPS. Typically, if there is value in an EPS, it is derived either from (1) early resource sales and/or (2) providing information on key dynamic uncertainties in order to decide whether and/or how to optimize development. The latter often is the driver of value.

As the industry moves to deeper and deeper waters, getting quality information on dynamic uncertainties gets more expensive and for some situations, becomes cost prohibitive. As a result, companies either need to be willing to sanction expensive developments with sizable risk (potentially bearing a higher risk tolerance) or find ways to make extended tests or an EPS financially and technically compelling.

The key dynamic uncertainties teams often want to reduce before sanctioning development are (1) reservoir compartmentalization, (2) natural or enhanced drive mechanism and/or (3) initial production rate. Each is linked to different decisions which can be optimized if uncertainty in the situation is reduced. Compartmentalization directly affects the number of development wells, drive mechanism affects the need for injection, and associated well count and initial rate directly affect facility size.

Ultimately, the key to deriving value from an EPS resides in its design, which includes the type of EPS vessel, the associated fiscal terms and the quality of the information gathered from the early production system prior to finalizing development. This includes the tests and data to be collected, as well as the duration of the production period prior to making the important development decisions.

### ELLEN COOPERSMITH



Ellen Coopersmith is the founder of Decision Frameworks, L.P., which is headquartered in Houston and has offices in Calgary, Canada and Frankfurt, Germany. She is based in Houston and specializes in Decision Analysis consultation, facilitation, training and implementation.

Prior to founding Decision Frameworks in 1999, Ellen spent 16 years at Conoco, where she led their implementation of Decision Analysis in Upstream for five years. She is an accomplished technical and managerial facilitator, as well as a published and invited speaker on both the implementation and the technical elements of Decision Analysis.

Ellen's passion for and focus on Decision and Risk Analysis is on skill development and on making framing, uncertainty analysis, and valuing information easy, day-to-day asset management tools in our client industries. She is a Petroleum Engineer with a degree from the Colorado School of Mines.



### EVENT INFO

Thursday  
**2.12.15**

11:30 AM TO 1:00 PM

### SPEAKER

Ellen Coopersmith  
Founder  
Decision Frameworks, L.P.

### LOCATION

Petroleum Club  
35th Floor  
1201 Louisiana  
Houston, Texas 77002

### EVENT CONTACT

Barry Faulkner  
281-627-8790  
barryfaulkner@earthlink.net

### MEMBERS

\$35

### NON-MEMBERS

\$40

Note: New Meeting Location

**SIGNA ENGINEERING CORP.**

*Petroleum Engineering*  
*MPD, MudCap and UnderBalanced Drilling*  
*Well Construction*  
*Project Management*  
*Field Execution*  
*Custom Software Design*  
*Custom Training*

**Managed Pressure Drilling School**  
 Once per Quarter  
 Every Year

2 Northpoint Dr., Ste. 700  
 Houston, TX 77060  
 281.774.1000

**Experience Signature Performance**  
[www.signa.net](http://www.signa.net)

ORANGE IS THE NEW GREEN

Flotek's citrus-based, environmentally friendly **CnF<sup>®</sup>** fracturing additives will revolutionize the way the world thinks about fracturing and will improve your production.

For more information contact  
[cesimkt@flotekind.com](mailto:cesimkt@flotekind.com)  
 or call  
 832-308-CESI (2374)

**PetroSkills<sup>®</sup>**

To maximize convenience, PetroSkills will deliver our most popular courses multiple times in Houston for the first few months of 2015.

*Enroll soon to ensure your seat!*

- **Basic Petroleum Engineering Practices – BE:**  
 2-6 February, 20-24 April
- **Production Operations 1 – P01:**  
 16-27 March, 1-12 June
- **Applied Reservoir Engineering – RE:**  
 16-27 February, 20 Apr - 1 May, 1-12 June
- **Completions and Workovers – CAW:**  
 23-27 February, 9-13 March, 20-24 April, 18-22 May

For details on these or our other 250 sessions in the Gulf Coast, contact Patty Davis, (832) 426-1203 or [patty.davis@petroskills.com](mailto:patty.davis@petroskills.com), or see details and full selection at [www.petroskills.com](http://www.petroskills.com)

Did you get your copy of our 2014-15 Training Guide?  
 If not, sign up for free at [www.petroskills.com/contact](http://www.petroskills.com/contact)

**PathView**  
 Well Path Visualization Software

- 2D and 3D view
- Lithology
- Anti-collision
- and more ...

**Pegasus Vertex, Inc.**  
 (713)981-5558 | [sales@pvisoftware.com](mailto:sales@pvisoftware.com) | Houston, USA

**ENGINEERS OF ALL DISCIPLINES**

Want to get Professionally Registered  
 But have not passed the FE Examination  
 And have been out of college more than four years  
 Then contact us to find out how to get prepared  
 And pass the FE Exam the first time.  
 The technique has a 98% + pass rate to date.

Next FE Exam Dates:  
 April 18 and October 31, 2015

P: 405-822-6761 | E: [bingwines@cox.net](mailto:bingwines@cox.net)  
[winrockengineeringinc.com](http://winrockengineeringinc.com)

COMPLETIONS & PRODUCTION

# Optimizing Hydraulic Fracture Performance in the Eagle Ford Oil Window – More Proppant is Better

This presentation will provide a case study on how one operator with acreage in the Frio County oil window of the Eagle Ford was able to significantly improve production results by testing different drilling targets, completion types (sliding sleeves and plug-and-perf), and fracture treatment designs. Early results were mixed, with initial plug-and-perf completions underperforming earlier sliding sleeve wells. It was determined through data analysis and production normalization techniques that the plug-and-perf treatments were under-stimulated with inadequate proppant being placed in individual fractures.

Once proppant amount per cluster was identified as a high-impact parameter, subsequent stimulations were performed with larger proppant volumes. These later wells experienced significant improvements in production performance, with each step-wise increase in stimulation design consistently resulting in better production performance. Scatter plots, cumulative production charts, and fracture modeling runs comparing different design scenarios will be presented to show how these factors were discovered.

## WADHAH AL-TAILJI

Wadhah Al-Tailji is a Basin Technical Manager at StrataGen, focusing on the Eagle Ford Shale, where he assists clients with fracture stimulation design, evaluation, optimization, and field supervision. He has been involved with Eagle Ford stimulation optimization for over three years, and has authored two SPE papers highlighting some of his successes. He joined StrataGen in 2010 as a field consultant, supervising hydraulic fracturing treatment in various plays, such as the Haynesville Shale, Permian Basin, Uinta Basin, Williston Basin, and Eagle Ford Shale.

Prior to joining StrataGen, Wadhah worked for BJ Services Company for over 4 years in East Texas and was involved in fracturing, acidizing, and cementing services. He holds B.S. and M.S. degrees in Petroleum Engineering from New Mexico Tech.



### EVENT INFO

Wednesday  
**2.18.15**

11:30 AM TO 1:00 PM

### SPEAKER

Wadhah Al-Tailji  
Basin Technical Manager  
Eagle Ford Shale  
StrataGen

### LOCATION

Greenspoint Club  
16925 Northchase Drive  
Houston, TX 77060

### EVENT CONTACT

Jonathan Godwin  
281-921-6526  
jgodwin@carboceramics.com

### MEMBERS

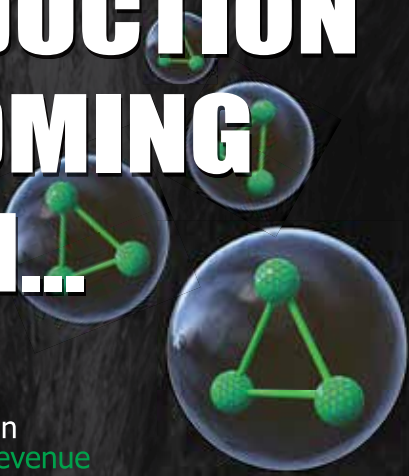
\$35

### NON-MEMBERS

\$40

# ProTechnics

# KNOW WHERE PRODUCTION IS COMING FROM...



Maximize Production  
+++ Increase Revenue

For more information on FlowProfiler, visit us at [www.corelab.com/protechnics](http://www.corelab.com/protechnics) or call us at 713-328-2320

FLOW™  
PROFILER  
OIL



## Fluid Diagnostic Tracer

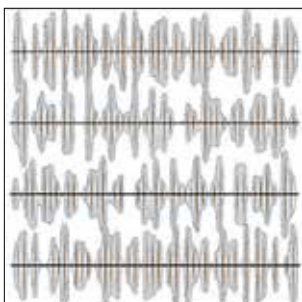
The industry's first comprehensive after-frac flow profile tracer technology that simultaneously evaluates both frac fluid clean-up and hydrocarbon production over time.

FLOWPROFILER provides critical information such as:

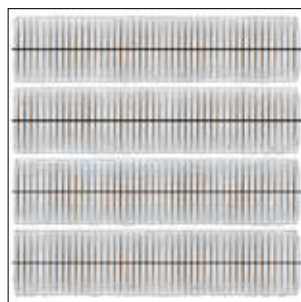
- Simultaneous Zonal Clean-Up & Production
- Hydrocarbon Production Indexed to Geologic Horizons
- Hydrocarbon Production Over Time
- Well Spacing Insights



The most efficient field frac network starts with predictable frac spacing and predictable frac volume.



Unpredictable



Predictable

Plug-and perf cannot deliver predictable, consistent frac results, and neither can open-hole completions. With Multistage Unlimited single-point injection, fracs initiate right where you plan them and proppant volume in every frac is exactly what you want. The result: an efficient field frac network for maximum reservoir connectivity.



[ncsfrac.com](http://ncsfrac.com)  
+1 281.453.2222  
[info@ncsfrac.com](mailto:info@ncsfrac.com)



©2014, NCS Energy Services, LLC. All rights reserved. Multistage Unlimited and "Leave nothing behind." are trademarks of NCS Energy Services, LLC. Patents pending.

## UNIVERSITY of HOUSTON

### PETROLEUM ENGINEERING

### Seeking Faculty Applications

The Petroleum Engineering Program in the Chemical and Biomolecular Engineering Department at the University of Houston invites applications for two tenured/tenure-track faculty positions. We are seeking faculty candidates with superior skills for effective teaching and pioneering research. The successful candidates will lead an externally funded research program, mentor graduate and undergraduate research, teach petroleum engineering courses, and serve UH, the Houston community, and the petroleum engineering profession.

Application is open for candidates with any petroleum engineering research interest. Special needs of the program include: drilling and well completions; production engineering; and applications of novel technologies in petroleum recovery and production operations, especially in deep water or for ultra-low permeability reservoirs.

Appointment to our faculty requires a Ph.D. in Engineering, Physical Sciences or a related field. Candidates at the Professor level must have demonstrated records of scholarship.

You will need to provide your Curriculum Vitae, a detailed description of research interests (not to exceed 10 pages), a teaching philosophy statement (2 pages), and the names and email addresses of three references whom we may contact.

**Applications should be submitted online via the following links:**

1. Assistant/Associate/Full Professor: apply at <http://jobs.uh.edu/postings/23170>
2. Assistant Professor: apply at <http://jobs.uh.edu/postings/23160>

Please direct inquiries for additional information to Thomas K. Holley, Ph.D., Director of the Petroleum Engineering Program, at [tkholley@uh.edu](mailto:tkholley@uh.edu)

The University of Houston is an Equal Opportunity/Affirmative Action employer. Minorities, women, veterans, and persons with disabilities are encouraged to apply.

PROJECTS, FACILITIES & CONSTRUCTION

# Challenges and Solutions in Multiphase Flow Measurement for Onshore, Offshore and Subsea Applications

Accurate measurement of oil, gas and water can be challenging enough when the fluids are fully separated through a properly sized test separator. But not all applications will allow for test separators to be installed – due to cost, size or complexity – and the measurements of the individual fluids will need to be determined with an inline multiphase flow meter system. This presentation will discuss some of the applications where multiphase meters are currently used, what challenges are commonly seen, and how the use of multiphase meters can effectively be used for these complex scenarios. The current status of multiphase meters will be covered, and examples of successful (and not so successful) applications of multiphase meters in real life applications will be presented.

## LARS FARESTVEDT

Lars Farestvedt is the General Manager of FMC Technologies' MPM Houston office, and is responsible for MPM's business in the Western Hemisphere. Prior to joining MPM in 2008, Lars spent 9 years in various management positions in FMC Measurement Solutions and FMC Subsea Systems. Lars has an Electrical Engineering Degree from West Virginia University, and has directly or indirectly been involved with multiphase metering for 25 years.



## SPRING SERIES SESSION III

Wednesday  
**2.18.15**

4:30 PM TO 6:00 PM

### SPEAKER

Lars Farestvedt  
General Manager  
FMC Technologies

### LOCATION

Wood Group Mustang  
Clydesdale Building Events Room  
17320 Katy Freeway  
Houston, TX 77094

### EVENT CONTACT

Brad Nelson  
832-230-8246  
bnelson@maxoilsolutions.com

### MEMBERS

\$35 per lecture

### NON-MEMBERS

\$45 per lecture

### STUDENTS

\$15 per lecture

**Slider**  
Automated Directional Drilling

**IMPROVE YOUR HORIZONTALS**

- ON-BOTTOM TOOL FACE ORIENTATION
- INCREASED MOTOR LIFE
- INCREASED ROP & HORIZONTAL REACH CAPABILITY
- ELIMINATES ORIENTATION TIME LOSSES

slb.com/Slider

# A Better Way to Frac

Take a look at the Binder MM Hybrid Frac Polymers...Field tested with Excellent Results

Feature	MM 200	Slickwater FR	Guar	MM 301
Drag Reduction Dose <sup>(1)</sup>	<0.2 gpt <sup>(2)</sup>	0.6 gpt	NA	<0.2 gpt
Sand Suspension Dose	3-5 gpt	NA	6-9 gpt	3-5 gpt
Sand Loading/Stage <sup>(3)</sup>	120-140%	None	100% <sup>(3)</sup>	120-150%
Divalent/TDS <sup>(4)</sup>	Up to 10% TDS	Varied	Low	Unlimited
Crosslinkable <sup>(5)</sup>	Yes	No	Yes	Yes
Temperature Stability	275 F	275 F	200 F	300 F
Return Flow	Excellent	Good	Okay	Excellent
Shale Stability	Excellent	Good	Okay	Excellent
Other Chemicals <sup>(5)</sup>	None Required	None Required	Multiple	None Required
Truckload Lead Time	Immediate	60 days	Immediate	Immediate

(1) Dose at 67+ percent drag reduction; (2) Instantaneous drag reduction 40% better than standard FR's at one-third the dosage; (3) 100% for guar as reference value; (4) Including salts, acids, bases, crosslinker, shale stabilizers, etc.- excellent for coil; (5) Any breaker except sodium bromate.

9391 Grogans Mill Road, Suite A-1  
The Woodlands, TX 77380



(281) 419-9047 office  
(281) 362-5612 fax



**PROCESS SOLUTIONS**

MAXIMIZING PERFORMANCE THROUGH OPERATIONAL EXCELLENCE

- OPERATIONS ASSURANCE
- SUBSEA PRODUCTION REALIZATION
- FLOW ASSURANCE
- SEPARATION SYSTEMS
- GAS TREATMENT & TRANSPORT
- PRODUCED WATER MANAGEMENT
- SAND & SOLIDS MANAGEMENT
- CONTAMINANTS MANAGEMENT
- CHEMICAL MANAGEMENT
- PROCESS/PRODUCTION OPTIMIZATION
- PROCESS TROUBLESHOOTING
- OPERATIONS PERFORMANCE STRATEGY [OPS]
- SYSTEMS AWARENESS TECHNICAL TRAINING

**WE ARE DEDICATED TO DELIVERING STRATEGIC VALUE FOR OUR CLIENTS.**

Our highly skilled technical team understand the changing and challenging needs of the oil and gas industry and the importance of objective, innovative and cost effective solutions.

contact@maxoilsolutions.com • www.maxoilsolutions.com  
ABERDEEN • LONDON • HOUSTON • STAVANGER • KUALA LUMPUR • PERTH

Why can Weatherford deliver more real time data at the wellsite than any other mudlogging company?

**Tim has cabin fever.**



**EXCELLENCE FROM THE GROUND UP™**

SURFACE LOGGING SYSTEMS  
www.weatherford.com/surfacelogging  
mudlogging.services@weatherford.com



WESTSIDE

# Granite Wash Optimization - Validating Completion and Production Techniques

The Granite Wash formation continues to be a prolific hydrocarbon producer, with over 1600 wells drilled during the past 10 years. During 2012 and 2013 an extensive development program was initiated by one operator in which 144 wells were drilled and completed with multi-stage hydraulically stimulated horizontal wells. These wells utilized various types of completion diagnostics to: (1) evaluate vertical and horizontal communication within the Granite Wash, (2) identify potential horizontal loading problems and (3) characterize long-term fracturing fluid movement. This presentation will share highlights from a very large completion diagnostic dataset and the resultant applications to production optimization.

## CHAD SENTERS

Chad Senters is the Region Engineering Advisor for the ProTechnics division of Core Laboratories in Oklahoma City, specializing in completion diagnostics. Chad has over 8 years of experience in the oil and gas industry during which he has focused on stimulation, coiled tubing and downhole tools. Chad graduated from the University of Missouri Rolla with a BS degree in chemical engineering. This presentation was coauthored by Linn Energy and was first presented in Amsterdam at the 2014 SPE ATCE.

## WESTSIDE SOCIAL EVENT: LUCKY STRIKE BOWLING

Bowling & Billiards! Limited Beverages and Food provided. Held at Lucky Strike VIP Lounge. Free valet parking provided for the first 50 people. Registration \$10 through SPE-GCS website. Registration limited to the first 100 people

### EVENT INFO

THURSDAY  
**2.19.15**

5:30 PM TO  
8:30 PM

### LOCATION

Lucky Strike Bowling  
1201 San Jacinto St.  
Houston, TX, 77002

### ORGANIZER


Sanaz Seddighrad  
713-215-7284  
sanaz\_seddighrad  
@oxy.com

### COST

Members \$10  
Non-Members \$20  
RSVP Only

### SPONSORS

- Rock Flow Dynamics
- Alpine Specialty Chemicals
- Momentive
- Tendeka
- ETS Oil Field Services L.P.
- Dynamic Oilfield Services
- Halliburton
- Petrophysical Solutions Inc.
- Packers Plus



### EVENT INFO

*Wednesday*  
**2.18.15**  
11:30 AM TO 1:00 PM

### SPEAKER

Chad Senters  
Region Engineering Advisor  
ProTechnics division  
of Core Laboratories

### LOCATION

Norris Conference Center  
Westchase  
9990 Richmond Avenue  
Suite 102  
Houston TX 77042

### EVENT CONTACT

Sandeep Pedam  
713-591-5738  
sandeep.pedam  
@conocophillips.com

### MEMBERS

\$40

### NON-MEMBERS

\$45

# PRODUCTIONEER

USED BY EVERYONE,  
FROM THE FIELD PUMPERS

ALL THE WAY UP TO MANAGEMENT

What our customers are saying:  
"Productioneer is a great data repository  
and analysis tool. Data entered in the field is  
immediately available to corporate office."

- FEATURES**
- FIELD DATA CAPTURE
  - ALLOCATIONS
  - REPORTS & GRAPHS
  - CUSTOMIZABLE TEMPLATES
  - FULLY MANAGED SERVICE

Mi4 Corporation  
Ph: (713) 401-9584  
sales@productioneer.com  
www.productioneer.com



24/7 SUPPORT HOTLINE (866) 421-6665

Exceptional Solutions,  
Unconventional World.

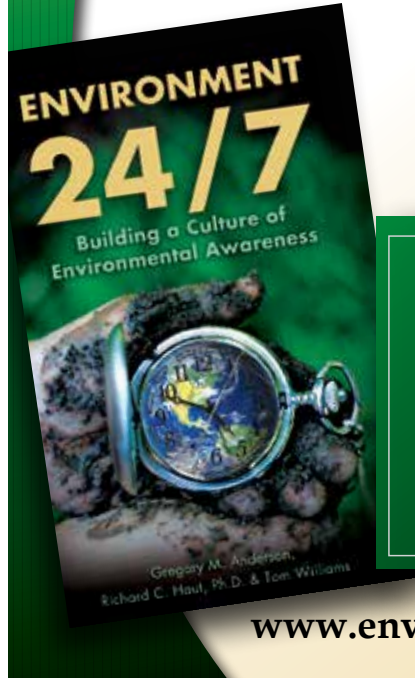
Integrate. Collaborate. Consolidate.  
sales@petrolink.com

www.petrolink.com

# ORDER TODAY! ENVIRONMENT 24/7

Building a Culture of  
Environmental Awareness

by Gregory M. Anderson,  
Richard C. Haut, PHD and  
Tom Williams



Learn more and  
order your copy  
today!



www.environment247.org

**SPE Digital Energy  
Conference and  
Exhibition**

3-5 March 2015  
The Woodlands, Texas  
The Waterway Marriott Hotel  
[www.spe.org/go/regDEC](http://www.spe.org/go/regDEC)

**Register by  
19 February  
and save up  
to USD 100!**

Society of Petroleum Engineers

With the support of the  
SPE Digital Energy  
Technical Section and the  
SPE Gulf Coast Section



## RESERVOIR

# Enhanced Recovery in Unconventional Liquid Reservoirs by Use of CO<sub>2</sub>

Technological advances in multiple-stage hydraulic fracturing and horizontal drilling have improved the overall profitability of oil-shale plays by enhancing matrix/wellbore connectivity. However, as the reservoir matures, primary-production mechanisms no longer drive oil to the hydraulic fractures, making the improvement of matrix/wellbore connectivity insufficient to provide economically attractive production rates. This study presents experimental results on the use of carbon dioxide (CO<sub>2</sub>) as an enhanced-oil-recovery (EOR) agent in preserved, rotary sidewall reservoir core samples with negligible permeability.

### DR. DAVID SCHECHTER



Dr. David Schechter is an associate professor at the Petroleum Engineer Department at Texas A&M University. He has a Ph.D. in Physical Chemistry from Bristol University, England, 1988 and a BS, Chemical Engineering from The University of Texas at Austin, 1984. His current research includes:

- Spraberry Trend Area
- Geological and Petrophysical Analysis
- Wettability Determination and Imbibition Experiments
- Numerical Modeling
- Reservoir Simulation
- CO<sub>2</sub> Flooding and Gas Injection



### EVENT INFO

Thursday  
**2.19.15**

11:30 AM TO 1:00 PM

### SPEAKER

Dr. David Schechter  
Associate Professor Texas A&M  
University

### LOCATION

Sullivan's Steakhouse  
4608 Westheimer Rd  
Houston, TX 77027

### EVENT CONTACT

Rafael G. Barroeta  
713-366-5356  
Rafael\_barroeta@oxy.com

### MEMBERS

\$35

### NON-MEMBERS

\$40

## Dyna-Drill

Manufacturers of  
Drilling Motor Components

- Mud Motor Power Sections  
(Sizes: 2 7/8" to 11 1/2")
- Coil Tubing Power Sections  
(Sizes: 1 11/16" to 3 3/4")
- Matrix-3® Coated Bearings
- Precision Machining

www.dyna-drill.com Power That Lasts™

# PREMIUM CONNECTIONS

Meeting your exacting requirements.

SealLock® | WedgeLock®  
TKC™ | TS™  
connection technology




**HUNTING**

www.huntingplc.com © 2013 Hunting

# SUBJECT MATTER EXPERTS

DESIGN  
ANALYSIS  
TESTING



**STRESS ENGINEERING SERVICES INC.**

281.955.2900  
www.stress.com

HOUSTON • CINCINNATI • NEW ORLEANS • BATON ROUGE • CALGARY

www.intertek.com



**Intertek**

**Upstream Services**  
6700 Portwest Drive | Houston, TX 77024  
713.479.8400  
westportservices@intertek.com



**SpeedDrill™ Bit**

nov.com

**NOV** Wellbore Technologies

**RPS Knowledge Reservoir**



Consulting  
Technical Projects  
Resourcing  
Unconventional  
Conventional  
Deepwater  
Production Solutions  
Knowledge  
Management

knowledge-reservoir.com

## BUSINESS DEVELOPMENT

# Natural Gas - Have the Contrarians Finally Been Vindicated?

Please join us at the Four Seasons Hotel for a panel discussion on the oil and gas industry's response to the current commodity price environment of falling oil prices and relatively steady gas prices.

Since at least 2011, the vast majority of E&P companies have been part of the "herd" positioning their companies to become "liquids focused." The robust transaction activity in the Permian, Eagle Ford, Bakken, and Mid-Con was the outcome of strong demand for liquid-weighted assets as oil prices continued to hold steady at \$100+. Meanwhile a few hardy contrarians pursued gas-weighted assets despite the market's focus on oil. Have these contrarians finally been vindicated? Some companies are now beginning to shift their focus from crude oil to natural gas as they see continued downward oil price pressures for the foreseeable near future. The result has been:

- Increased M&A&D activity in gas-weighted assets due to less volatility in natural gas prices, depressed oil prices, and the lack of quality oil-weighted assets on the market
- Increased natural gas permitting and drilling activity due to a shift in capital from uneconomic oil locations to gas opportunities
- Rebalancing of asset portfolios given the current commodity price environment

What are public and private companies doing in the face of the new commodity price environment? Who are the big winners and losers in the new commodity price environment? What should we expect in terms of natural gas weighted M&A&D transaction activity?

We welcome you to join us for this informative hosted and moderated panel discussion.

### SEASON PASS HOLDERS

You do not need to register for this event, as your Season Pass has automatically registered you for all 2014-15 Business Development events. Thank you for being a Season Pass holder.



### EVENT INFO

Thursday

**2.25.15**

5:00 PM TO 7:00 PM

### SPEAKER

TBD

### LOCATION

Four Seasons Hotel  
1300 Lamar  
Houston, TX 77010

### EVENT CONTACT

Matt Bormann  
281-345-8019  
mbormann@wwtco.co

### MEMBERS

\$40 (ends 02/24/2015)

### NON-MEMBERS

\$45 / \$50 WALK-INS

# SAFETHERM

INSULATING PACKER FLUID

## Combat heat loss where it counts

SAFETHERM<sup>†</sup> aqueous-base or water-miscible insulating packer fluid system is designed to minimize convective and conductive heat loss to assure flow in deepwater and other low temperature environments. The system is proven to control annular pressure build up and maximize produced fluid quality.

An operator in West Africa used SAFETHERM insulating packer fluid to slow the cooling of stationary crude in the production line. As a result they successfully tested four deepwater wells with zero installation problems or QHSE incidents.



[miswaco.com/completions](http://miswaco.com/completions)

**Mi SWACO**  
A Schlumberger Company

<sup>†</sup> Mark of M-I L.L.C.



### Geosteering Services

Highly qualified personnel with 20+ years DD & LWD experience

24/7 Real-time monitoring or reports from LAS files

Proprietary software

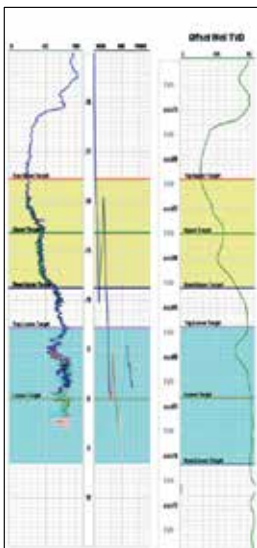
### Geosteering Software

TST interpretation for GR only measurements

Image displays / interpretation of azimuthal GR, resistivity or density measurements

Resistivity modelling / interpretation for LWD propagation resistivity

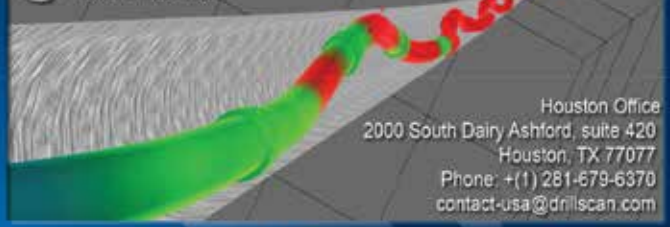
Software sales, training and technical support



[info@geosteering.com](mailto:info@geosteering.com)

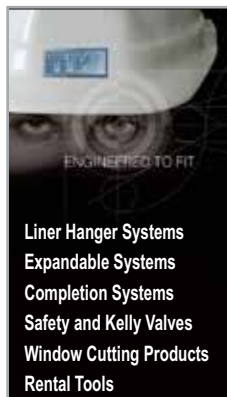
Call 281 573 0500

## Advanced Drilling Mechanics Solutions



Houston Office  
2000 South Dairy Ashford, suite 420  
Houston, TX 77077  
Phone: +(1) 281-679-6370  
[contact-usa@drillscan.com](mailto:contact-usa@drillscan.com)

Software, Expertise, Services, Training



Liner Hanger Systems  
Expandable Systems  
Completion Systems  
Safety and Kelly Valves  
Window Cutting Products  
Rental Tools

## Innovative Custom-Engineered Drilling and Completion Solutions



A Pearce Industries Company

Serving the Oil and Gas Industry Since 1917

Tel: 713-729-2110 Fax: 713-728-4767 [www.tiwttools.com](http://www.tiwttools.com)

## PROJECTS, FACILITIES &amp; CONSTRUCTION

## An In-Depth Comparison of Four Gas Measurement Technologies: Orifice, Turbine, Ultrasonic and Coriolis

Global gas demand continues to outpace oil, increasing its contribution to overall energy use. Major upstream developments together with midstream transportation systems and downstream feedstock projects continue to increase. As this revolution evolves, there will be a dramatic rise in the requirement for high-accuracy measurement at every point in the gas value chain.

This value chain can be subdivided into four major categories within which metering is carried out: Gas Production, Gas Transmission, Gas Storage and Gas Distribution. Within these categories there is a huge array of different gas metering applications and a similar number of potential solutions. This can lead to confusion when selecting the optimum solution for the application.

Two of the traditional approaches have been to use orifice plates or turbine meters; however, newer technologies, in particular ultrasonic and coriolis meters, are being utilized more frequently. The aim of this presentation is to address meter selection and provide pointers to assist engineers within the four major categories listed above.

This session is scheduled as a one (1) hour presentation followed by a thirty (30) minute Q&A session. We expect a large turnout, so please book early and we hope you attempt to attend all four sessions. The PF&C study group appreciates the support of our SPE-GCS members and we look forward to seeing you there.

### DAN HACKETT

Dan is Business Development Director of Ultrasonics for the Daniel Measurement & Control Division of Emerson Process Management based in Houston, Texas. Dan develops key business opportunities for Daniel's gas and liquid ultrasonic meter business and provides technical sales training to the Daniel sales channel as well as conducting measurement seminars throughout the world. He has extensive experience in custody transfer measurement of oil and gas.

Dan has authored numerous papers presented at various API, AGA, ISA and NEL conferences. He has participated on several committees and working groups of the API Committee on Petroleum Measurement, most recently Chapter 5.8 Measurement of Liquid Hydrocarbons by Ultrasonic Flow Meters. Dan is a member of the AGA Transmission Measurement Committee, which is responsible for AGA 9 Measurement of Gas by Multipath Ultrasonic Meters.

Dan is a 1980 graduate of Texas A&M University.



### SPRING LECTURE SERIES IV

*Wednesday*  
**2.25.15**

11:30 AM TO 1:00 PM

#### SPEAKER

Dan Hackett  
Business Development Director  
for UltrasonicsDaniel  
Measurement and Control Inc.  
Emerson Process Management

#### LOCATION

Wood Group Mustang  
Clydesdale Building Events Room  
17320 Katy Freeway  
Houston, TX 77094

#### EVENT CONTACT

Brad Nelson  
832-230-8246  
bnelson@maxoilsolutions.com

#### MEMBERS

\$35 per lecture

#### NON-MEMBERS

\$45 per lecture

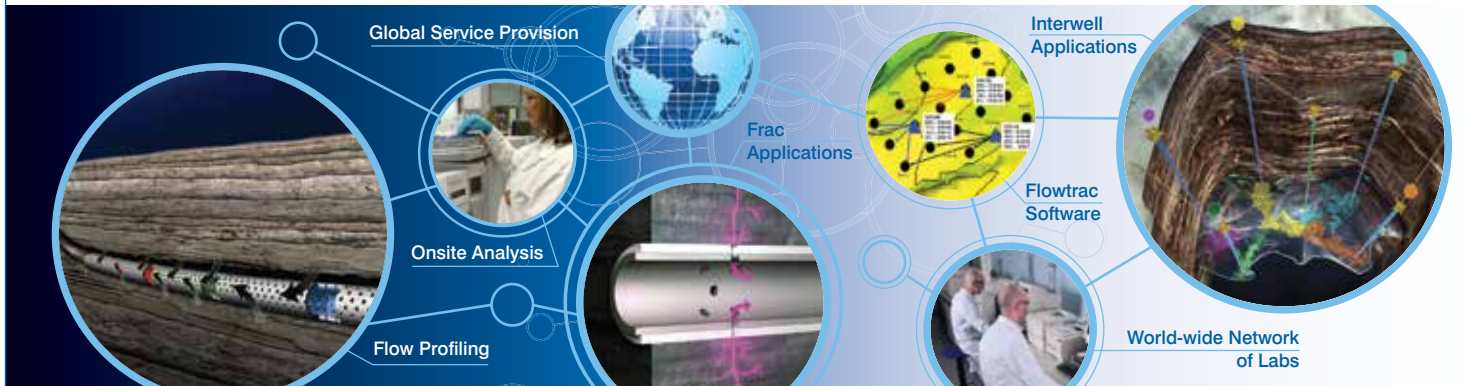
#### STUDENTS

\$15 per lecture



Providing Insight Onsite

# Know Production. No Surprises.



## Reservoir Characterisation Using Tracer Technology

- Expertise in waterflood, injection gas, CO<sub>2</sub> and EOR chemical tracer applications
- Long term wellbore fluid inflow characterisation using no wires, fibres or well intervention
- Unconventional stage production measurement using Tracerco patented technology
- Global network of laboratories and operational capabilities providing local service provision to key oil and gas regions

Tracerco, 4106 New West Drive, Pasadena TX 77507 USA  
 Tel: +1 281 291 7769 Toll Free: 1 800 288 8970

[www.tracerco.com/reservoir-characterisation](http://www.tracerco.com/reservoir-characterisation)



## CORROSION-RESISTANT COMPOSITE PIPELINE SOLUTIONS

Flexpipe Systems' composite linepipe products are flexible, reliable and customizable. We are the answer to your next pipeline project.

**SHAWCOR**  
ENERGY SERVICES • GLOBAL SOLUTIONS

**FLEXPipe SYSTEMS**  
A SHAWCOR COMPANY  
[flexpipesystems.com](http://flexpipesystems.com)

## DIRECTIONAL AND HORIZONTAL DRILLING SPECIALISTS

WWW.NOVADIRECTIONAL.COM

## Cardno PPI SEMS Compliance Services

- > Consultants and Clerks
- > Customized Documents
- > Software Solutions

920 Memorial City Way, Suite 900, Houston, TX 77024  
 Phone 713 464 2200 Email [usoilandgas@cardno.com](mailto:usoilandgas@cardno.com)  
[www.cardnoppi.com](http://www.cardnoppi.com)

## SPE-GCS Night at the Movies

PRESENTED BY HSSE-SR AND YOUNG PROFESSIONALS

Please join SPE-GCS HSSE-SR and Young Professionals groups for an evening of networking and learning.

5:00 PM Social Hour  
6:00 PM Feature Film: Big Men  
7:30 PM Panel Discussion

Sponsorship Opportunities Available!



## EVENT INFO

TUESDAY

**2.17.15**

5:00 PM - 8:30 PM

### LOCATION

Studio Movie Grill - City Centre  
805 Town & Country Lane  
Houston, TX 77024

### COST

\$10 Members / \$20 Non-Members  
\$30 Walk-ins

### EVENT CONTACTS

Diana Smith  
dianaksmith4@gmail.com  
Pavitra Sainani  
pavitra.a.sainani@exxonmobil.com

## New Board Members

Please welcome the new Board members for the 2015-2016 program year which starts in August 2015. In accordance with by-laws, the Succession Planning and Nominating committees identify the best candidates with the skills and leadership talent to manage the section and provide service to all the members. These positions are elected by the Board and presented to the membership each year in the February newsletter.

In addition to the elected members to the right, one appointed member was also named at the December Board meeting. Simeon Ebury, Chevron, will become the Education Chair in August 2015. Simeon is the past YP chair, the 2015 Engineer Week coordinator, 2014 Young Engineer of the Year, and involved in numerous YP activities.

**Congratulations to all new Board members.**

### VICE CHAIR | DEEPAK GALA, SHELL

Deepak is currently the At Large Director and is active in SPEI and GCS.

### VICE TREASURER | DAVID FLORES, CONSULTANT

David is a former SPE-GCS Director as Career Management and Secretary. He continues to support many GCS activities.

### SECRETARY | GABRIELLE GUERRE, RYDER SCOTT

Gabrielle is a current Board member for the Education Committee and active in GCS and Young Professional functions.

### AT LARGE DIRECTOR | ALVIN BARBER, SCHLUMBERGER

Alvin has more than 15 years with SPE and in the industry. He was previously with ExxonMobil. Alvin is involved in Star Scholarship, ATCEs, Fracking Conference, Artificial Lift Conference and others.

### AT LARGE DIRECTOR | MARK FLEMING, SUNTRUST ROBINSON HUMPHREY

Mark has more than 25 years in the industry and SPE working primarily in reservoir engineering functions. He has recently moved into investment banking.

### AT LARGE DIRECTOR | JOHN JACKSON, UNIMIN ENERGY

Over the past 3 years, John Jackson has served multiple positions on the Young Professionals board while serving as Editor of the Gulf Coast Section Newsletter.

## 1ST ANNUAL SPE

# OilSim Competition Fundraiser

The 1st Annual Society of Petroleum Engineers Gulf Coast Section OilSim Competition Fundraiser will be held on Friday, April 10, 2015 at the offices of The Frontline Group of Texas, LLC located at 15021 Katy Freeway, Suite 575, in Houston, Texas. Proceeds from the fundraiser benefit the SPE-GCS Scholarship Fund. In combination with other section functions, there have been 33 new scholarships for incoming college freshman studying petroleum engineering, math and sciences, and 70 renewed scholarships which include sophomores, juniors and seniors for their continued education in petroleum engineering. The OilSim Competition Fundraiser would like to add to these numbers in 2015.

What happens at the OilSim Competition Fundraiser, you might ask? Participants are grouped in teams and each team acts as a virtual petroleum company in the business simulation OilSim. The team challenge is to explore and discover oil and gas, then create and implement a plan for developing the field, and finally operating it until it is abandoned. An experienced OilSim instructor guides the participants through the process.

Sponsors are a welcome and an essential part of making this event a success. All sponsors will be recognized in the competition program and on the sponsorship billboard that is exhibited throughout the competition. Please see the Sponsor Form for sponsorship levels. In-kind donations for ditty bags and door prizes are also accepted.

On behalf of the entire 2014-2015 SPE-GCS OilSim Competition Fundraiser Committee, we look forward to seeing everyone for a fun-filled day of competition!

## EVENT INFO

# OilSim

FRIDAY

**4.10.15**

8:00 AM TO 5:00 PM

## EVENT CONTACTS

Kristin Obenhaus

281-453-6037

kobenhaus@frontline-group.com

Lindsey Ferrell

lferrell@frontline-group.com

## LOCATION

The Frontline Group of Texas, LLC  
15021 Katy Freeway, Suite 575  
Houston, TX 77094  
281-453-6000

## DEADLINE

March 15, 2015

Participation is limited. We plan to have 8 teams of four, entries accepted on a first-come, first served basis.

## MORE INFO

[spegcs.org/committees/oilsim/](http://spegcs.org/committees/oilsim/)

## EVENT INFO

# Downtown Abbey

FRIDAY

**2.13.15**

11:00 AM

## LOCATION

Carmelo's Ristorante Italiano  
14795 Memorial Drive  
Houston, Texas 77079

## EVENT CONTACT

Nancy Hill

281-809-5515

Nancyhill2444@sbcglobal.net

Evelyn Earlougher

281-419-1328

earlougher@comcast.net

## COST

To Be Announced

## DEADLINE

Tuesday, February 10

## NOTE

The venue, cost and program are very tentative at this time. Please get in touch with one of the contacts below for more accurate details.



# SPE-GCS 1st Annual Texas Hold 'Em Scholarship Fundraiser

Tournament registration will begin at 5:30 PM, followed by a Texas BBQ buffet dinner. Cash bar will be available. Tournament will begin at 6:00 PM. Eliminated players may stay and watch the rest of the tournament. Blackjack and craps tables will be available for guests and eliminated players. The award ceremony is planned for 9:30 PM.

Participation is open to members, nonmembers, guests, and friends of SPE and Hess Club, but poker professionals are not allowed. Entries are accepted on a first-come, first-served basis. Please register in advance as seats are limited. Guest Fee is for attendees who do not play in the poker tournament itself, but may play at the blackjack table and craps table.

Please support this new scholarship fundraiser and have some fun! Register online to reserve your seat today!

## QUESTIONS

**Akhan Mukhanov**  
Akhan.Mukhanov@gmail.com  
832-341-3733

## LOCATION

**HESS Club**  
5430 Westheimer Road,  
Houston, TX 77056

## FEES

**Tournament Fee**  
\$50 Early Bird  
\$60 After 2/28

## Guest Fee

\$25 Early Bird  
\$30 After 2/28

Fees are non-refundable after registration deadline: March 26th, 2015

Saturday  
**March 28th**

## SPONSORSHIP OPPORTUNITIES

Proceeds from the sponsorships of this tournament benefit the SPE-GCS Scholarship Fund, which has awarded more than \$3 million in scholarships since 1963 to local engineering students.

## DIAMOND SCHOLARSHIP SPONSORS

**\$5,000**

Includes 8 tournament participants  
Visual media and banners in the Texas Ballroom  
Logo on the event page on the SPE-GCS website  
Verbal mention at the event  
Post-event coverage in the SPE-GCS Newsletter

## PLATINUM SCHOLARSHIP SPONSORS

**\$2,500**

Includes 6 tournament participants  
Foam board on easel at the registration table  
Logo on the event page on the SPE-GCS website  
Verbal mention at the event  
Post-event coverage in the SPE-GCS Newsletter

## GOLD SCHOLARSHIP SPONSORS

**\$1,000**

Includes 4 tournament participants  
Banner under the bar counter in recreation room  
Logo on the event page on the SPE-GCS website  
Verbal mention at the event  
Post-event coverage in the SPE-GCS Newsletter

## SILVER SCHOLARSHIP SPONSORS

**\$500**

Includes 2 tournament participants  
Logo on the event page on the SPE-GCS website  
Verbal mention at the event  
Post-event coverage in the SPE-GCS Newsletter



# EVENT RECAP

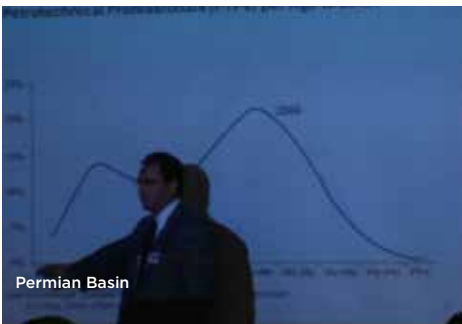
PetroBowl XIII kicked off the very exciting week at the SPE Annual Technology Conference and Exhibition 2014 in Amsterdam. This year's competition featured 36 colleges from all over the world battling for scholarship money, a stunning trophy, and of course overall bragging rights. Congratulations goes to the University of Tulsa who emerged as the victors for Petrobowl XIII, with University of Oklahoma (OU) taking a close second, and Colorado School of Mines finishing third.



Thank you to Permian Basin, Community Service and Continuing Education groups for providing photos from their latest events. We'd like to feature more photos from our section events and luncheons in the Connect. If your committee or study group has photos, please send the original high-resolution file to the Connect editor at [editor@spegcs.org](mailto:editor@spegcs.org)



Permian Basin



Permian Basin



Community Service



Continuing Education



Continuing Education



Continuing Education



Continuing Education



Continuing Education

EVENT

RECAP

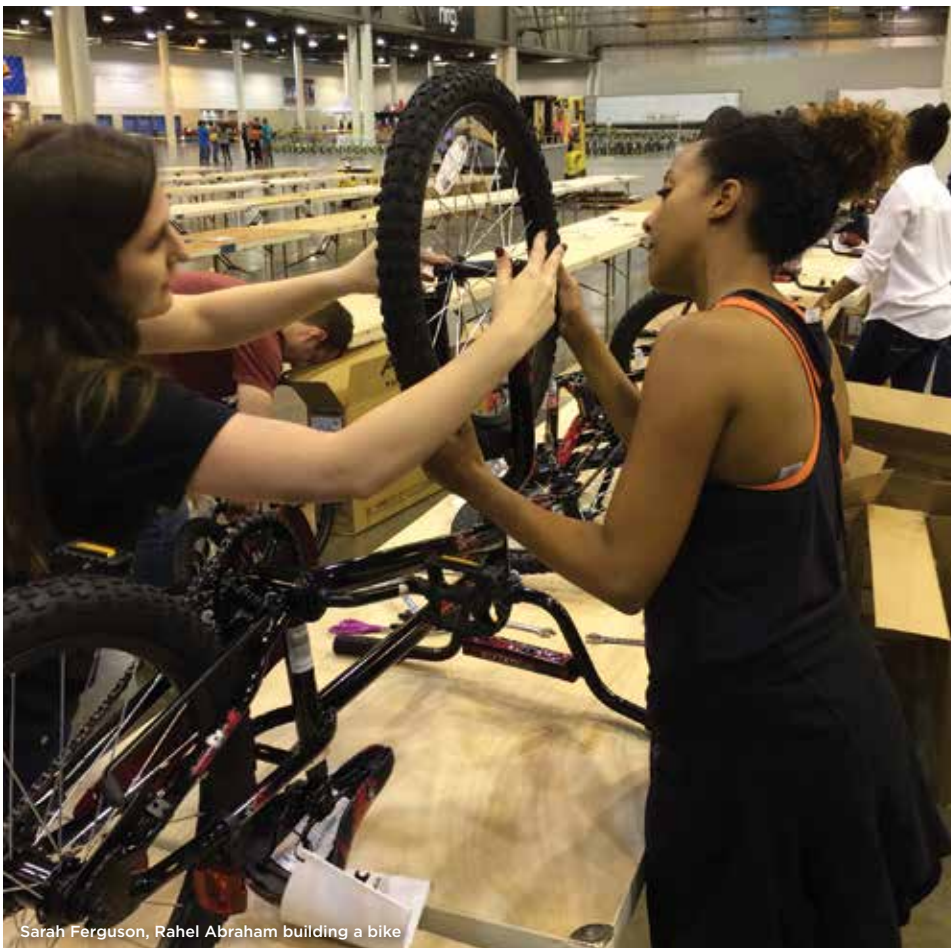
Each year the Young Professionals partner with elementary schools to encourage students in kindergarten through third grade to improve reading skills, behavior and attendance. Those students who committed to a special monitoring program and fulfilled all the necessary requirements were rewarded with a bike! SPE Young Professionals assisted with assembling some of 10,000 bikes that were delivered to these students the week before Christmas. Thanks for your commitment to our next generation!



Back Row: Fabian Vera, Greg Smyth, Israel Yeke, Simeon Eburi, Alvin Barber, Austin Powers, Asher Coe  
Front Row: Jose Garcia, Leonard Johnson, Juana Eburi, Rahel Abraham, Sarah Ferguson, Vivek Ghosh, Isabel Eburi, Abe Abraham



Rebecca Tadesse building a bike



Sarah Ferguson, Rahel Abraham building a bike



Alvin Barber building a bike



Randy Olive, Jose Garcia, Simeon Eburi loading bikes

---

SPE-GCS  
**STUDENT CHAPTER PAGE**  
TAMU-SPE

## Texas A&M SPE Visits Greens Prairie Elementary School

As we work towards increasing the positive publicity of the oil and gas industry, Texas A&M SPE had the privilege of visiting the second grade class of Greens Prairie Elementary school in Bryan, TX on the 14th of November, 2014 with tremendous success in increasing awareness of the oil and gas industry.

Three concepts were introduced, "What is oil and gas?", "How do we get it out?", and "What is the industry doing to keep the environment safe?" Not only were we able to teach the next generation about the oil & gas industry, we also attracted their teachers' attention and with the success of the event, the 4th grade class from Greens Prairie Elementary has asked us to return on the 27th of February, 2015 to provide a similar demonstration.

We look forward to establishing an annual relationship with Greens Prairie, and hopefully expand to more schools in the Bryan/College Station area as part of our efforts as an outreach committee to increase positive publicity and try to negate mythical/false assumptions.

---

## Annual Texas A&M SPE Paintball Tournament

Texas A&M SPE has had tremendous success in all of our social and networking events this year. This was only possible because of the great support from our sponsors and everyone who participated in each one of our events.

We have a full calendar planned for next spring as well! On this occasion, we would like to invite everyone to our Annual Texas A&M SPE Paintball Tournament. This event will take place on February 20th from 4:00pm to 6:00pm at Zoomz Paintball, College Station. This is a great opportunity to improve relationships between students and industry representatives in a more relaxed environment.

If you are interested in sponsoring or being included in the sign up email, please email Ana Victoria Perez at [ana.victoria92@tamu.edu](mailto:ana.victoria92@tamu.edu).

We would love to see everyone there!

### EVENT INFO

---

FRIDAY

**2.20.15**

#### LOCATION

Zoomz Paintball  
College Station

#### FOR MORE INFO

Ana Victoria Perez  
[ana.victoria92@tamu.edu](mailto:ana.victoria92@tamu.edu)

## TAMU SPE 25<sup>th</sup> Anniversary Party

### EVENT INFO

---

THURSDAY

**2.26.15**

#### LOCATION

Texas A&M University

#### FOR MORE INFO CONTACT

Ana Victoria Perez  
[ana.victoria92@tamu.edu](mailto:ana.victoria92@tamu.edu)

Our student chapter is proud to be celebrating our 25th Anniversary this year! We will be having a party in the Memorial Student Center at 7 PM on February 26, 2015. There are three ways for you to get involved with this event.

The first is by attending! The party is conveniently scheduled for the evening of the Career Enhancement Event, so if you are planning to be on campus to recruit, you are encouraged to stay and celebrate with us. However, anyone is welcome to come to town for the party! Tickets for SPE members and guests will be available for purchase.

The second is by submitting a video of yourself talking about the Texas A&M Student Chapter. You may tell us about a particular memory you have from your time here in petroleum engineering, leadership positions you held, or anything you admire about our student chapter. These videos will be used in a montage, which will be shown at the party. Please aim for less than 1 minute long. You may email your video to [jjwisler@tamu.edu](mailto:jjwisler@tamu.edu) or text it to 281-733-8801.

The third is by sponsoring this event. We want to celebrate in style, and we can only do this with the support of our sponsors. If you or your company is interested in sponsoring the 25th Anniversary Celebration, please contact Ana Victoria Perez.

# SPE GULF COAST SECTION DIRECTORY

YOUR GUIDE TO YOUR ORGANIZATION LEADERS

## Gulf Coast Section Officers – 2015-2015

### CHAIR

Jeanne Perdue, Occidental  
713-215-7348  
jeanne\_perdue@oxy.com

### VICE CHAIR

Ivor Ellul, RPS Knowledge Reservoir  
713-595-5100  
iellul@knowledge-reservoir.com

### SECRETARY

Sunil Lakshminarayanan, Occidental  
713-344-1249  
sunil.lakshminarayanan@gmail.com

### TREASURER

Lucy King, Miller and Lents, Ltd  
713-308-0343  
lking@millrandlents.com

### VICE TREASURER

Alex McCoy, Occidental  
713-366-5653  
alexander\_mccoy@oxy.com

### CAREER MANAGEMENT

Patty Davis, PetroSkills  
832-426-1203  
patty.davis@petroskills.com

### COMMUNICATIONS

Subash Kannan, Anadarko  
832-636-7679  
subash.kannan@anadarko.com

### COMMUNITY SERVICES

Amy Timmons, Weatherford  
713-836-6563  
amy.timmons@weatherford.com

### EDUCATION

Gabrielle Guerre, Ryder Scott  
713-750-5491  
gabrielle\_guerre@ryderscott.com

### MEMBERSHIP

Xuan VandeBerg  
832-444-5143  
stem.fields@gmail.com

### PAST CHAIR

Mike Strathman, Trinity Group  
713-614-6227  
mike-strathman@att.net

### PROGRAMS

David Tumino, Murphy Oil  
281-717-5123  
tuminospe@hal-pc.org

### SOCIAL ACTIVITIES

Jim Sheridan, Baker Hughes  
281-432-9209  
jim.sheridan@bakerhughes.com

### TECHNOLOGY TRANSFER

Carol Piovesan, APO Offshore  
281-282-9291  
cpiovesan@apooftshore.com

### YOUNG PROFESSIONALS

Pavitra Sainani, ExxonMobil  
832-624-0505  
pavitra.a.sainani@exxonmobil.com

### DIRECTORS 2013-15

Trey Shaffer, ERM  
832-209-8790  
trey.shaffer@erm.com

John Lee, Univ. of Houston  
713-743-4877  
wjlee3@uh.edu

Deepak Gala, Shell  
281-544-2181  
deepak.gala@shell.com

### DIRECTORS 2015-16

Jenny Cronlund, BP Exploration  
281-366-8966  
jenny.cronlund@bp.com

Torrance Haggerty, T.R. Consulting  
281-714-5472  
thaggerty06@gmail.com

Eric Kocian, ExxonMobil  
832-624-7962  
eric.m.kocian@exxonmobil.com

## SPE GULF COAST NORTH AMERICA REGIONAL DIRECTOR

Bryant Mueller, Halliburton  
281-818-5522  
bryant.mueller@halliburton.com

## Committee Chairs

### AWARDS

Jeremy Viscomi,  
Petroleum Technology Transfer Council  
785-864-7396  
jviscomi@pttc.org

### CONTINUING EDUCATION

Nii Ahele Nunoo, NOV  
507-304 5416  
Nii.Nunoo@nov.com

### ESP WORKSHOP

Noel Putscher, Newfield  
281-674-2871  
nputscher@newfield.com

### GOLF CO-CHAIRS

Cameron Conway, KB Machine  
281-217-0660  
cconway@kb-machine.com

Robin Smith, Halliburton  
713-907-1694  
Robin.Smith@halliburton.com

### INTERNSHIPS

Gabrielle Guerre, Ryder Scott  
713-750-5491  
gabrielle\_guerre@ryderscott.com

### NEWSLETTER

John Jackson, Unimin Energy  
832-247-0233  
jsjackson@unimin.com

### SCHOLARSHIP

Tanhee Galindo, Nexeo Solutions  
832-823-1511  
gcs-scholarship@spemail.org

### SPORTING CLAYS

Paul Conover, NOV  
713-346-7482  
paul.conover@natoil.com

### TENNIS

James Jackson, Halliburton  
713-366-5704  
james.jackson@halliburton.com

---

**WEB TECHNOLOGY**

Shivkumar Patil, Aker Solutions  
713-369-5352  
shivkumar.patil@akersolutions.com

---

**SECTION MANAGER**

Kathy MacLennan, SPE-GCS  
713-779-9595 x 813  
kmaclennan@spe.org

---

**SPONSORSHIP**

John Vozniak, Consultant  
713-502-0981  
jvoznia@mac.com

---

**PUBLICITY**

Baljit Singh, Consultant  
832-588-7470  
baljits@aol.com

**Study Group Chairs****BUSINESS DEVELOPMENT**

Ricardo Concha, Credit Suisse  
713-890-1400  
ricardo.concha@credit-suisse.com

---

**COMPLETIONS & PRODUCTION**

Mark Chapman, CARBO Ceramics  
281-921-6522  
mark.chapman@carboceramics.com

---

**DIGITAL ENERGY**

Rick Morneau, Morneau Consulting  
281-315-9395  
RickMorneau@outlook.com

---

**DRILLING**

Ernie Prochaska, NOV Downhole  
832-714-3842  
ernie.prochaska@nov.com

---

**GENERAL MEETING**

Raja Chakraborty, Shell  
281-544-2148  
Raja.Chakraborty@shell.com

---

**HEALTH, SAFETY, SECURITY,  
ENVIRONMENT AND  
SOCIAL RESPONSIBILITY**

Trey Shaffer, ERM  
832-209-8790  
trey.shaffer@erm.com

---

**INTERNATIONAL**

Owen Jones, ExxonMobil  
Development Company  
832-624-2019  
owen.jones@exxonmobil.com

---

**NORTHSIDE**

Robert Estes, Baker Hughes  
713-879-4414  
robert.estes@bakerhughes.com

---

**PERMIAN BASIN**

Amy Timmons, Weatherford  
713-836-6563  
amy.timmons@weatherford.com

---

**PETRO-TECH**

Jessica Morgan, Blackstone Minerals  
713-929-1633  
jmorgan@blackstoneminerals.com

---

**PROJECTS, FACILITIES,  
CONSTRUCTION**

Chris Shaw, Shell  
281-544-6796  
C.Shaw@shell.com

---

**RESEARCH & DEVELOPMENT**

Skip Davis, Technology Intermediaries  
281-359-8556  
skdavis@technologyintermediaries.com

---

**RESERVOIR**

Rafael Barroeta, Occidental  
713-366-5356  
rafael\_barroeta@oxy.com

---

**WATER & WASTE  
MANAGEMENT**

Kira Jones, Consultant  
kirarjones@gmail.com

---

**WESTSIDE**

Sandeep Pedam, ConocoPhillips  
(832) 486-2315  
sandeep.pedam@conocophillips.com

---

# CONNECT

## INFORMATION

**NEWSLETTER COMMITTEE**

**CHAIRMAN | John Jackson**  
editor@spegcs.org

**AD SALES | Pat Stone**  
starlite1@sbcglobal.net

**BOARD LIAISON | Subash Kannan**

**NEWSLETTER DESIGN | DesignGood Studio**  
designgoodstudio.com

**SPE HOUSTON OFFICE**

**GULF COAST SECTION MANAGER**  
Kathy MacLennan | kmaclennan@spe.org

**GCS ADMINISTRATIVE ASSISTANT**  
Sharon Harris | sharris@spe.org

**HOURS & LOCATION**

10777 Westheimer Road, Suite 1075  
Houston, Texas 77042  
P 713-779-9595 | F 713-779-4216  
Monday - Friday 8:30 a.m. to 5:00 p.m.

**PHOTO SUBMISSIONS**

We are looking for member photos to feature on the cover of upcoming issues! Photos must be at least 9" by 12" at 300 DPI. Email your high resolution picture submissions to: editor@spegcs.org

**CHANGE OF ADDRESS**

To report a change of address contact:  
Society of Petroleum Engineers  
Member Services Dept.  
P.O. Box 833836  
Richardson, Texas 75083-3836  
1.800.456.6863 | service@spe.org

**CONTACT**

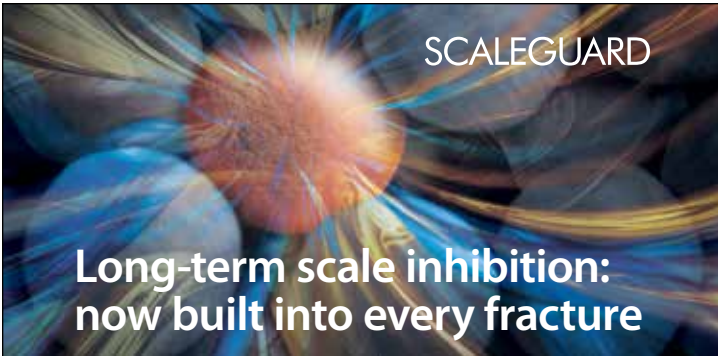
For comments, contributions, or delivery problems, contact editor@spegcs.org.

---

## ADVERTISE YOUR BUSINESS IN THE SPE-GCS NEWSLETTER OR ON THE SPE-GCS WEBSITE

*Connect* is printed 12 times per year and contains premium positions for advertisers wanting to reach some of the most influential oil & gas professionals in the world. We are now selling ads for the 2015-2016 program year, and our ad sizes have been updated. Please visit the SPEGCS website for more information regarding ad pricing and specifications.

**For information on advertising in this newsletter or  
on the SPE-GCS website, please contact:  
Pat Stone, Star-Lite Printing, Inc  
281-530-9711 / starlite1@sbcglobal.net**



SCALEGUARD

## Long-term scale inhibition: now built into every fracture

### SCALEGUARD proppant-delivered scale inhibition

SCALEGUARD® technology is an encapsulated ceramic proppant infused with scale-inhibiting chemicals to maintain optimum production and recovery rates from scale-prone wells, while reducing well costs and chemical usage.

SCALEGUARD technology features an engineered internal porosity and can be blended with any product from our high quality proppant portfolio, without compromising the high conductivity of the proppant pack. Scale-inhibiting chemicals infused within the proppant are released into the fracture only on contact with water to deliver highly efficient production assurance.

Now long-term scale prevention is available throughout your entire production system from a single, simple treatment while you frac.



[carboceramics.com/scaleguard](http://carboceramics.com/scaleguard)

Production. Enhanced.



NON-PROFIT  
ORGANIZATION  
U.S. POSTAGE  
PAID  
PERMIT NO. 6476  
HOUSTON, TX

### SOCIETY OF PETROLEUM ENGINEERS GULF COAST SECTION

10777 Westheimer Road  
Suite 1075  
Houston, TX 77042

# February CALENDAR

SUNDAY	MONDAY	TUESDAY	WEDNESDAY	THURSDAY	FRIDAY	SATURDAY
	<b>1</b>	<b>2</b>	PF&C Lecture 1 <b>3</b>	Research & Development <b>4</b>	<b>5</b>	<b>6</b>
<b>8</b>	<b>9</b>	Northside <b>10</b>	Drilling PF&C Lecture 2 <b>11</b>	General Meeting <b>12</b>	Auxiliary <b>13</b>	<b>14</b>
<b>15</b>	<b>16</b>	YP + HSSE Movie Night <b>17</b>	Completions & Production Westside PF&C Lecture 3 <b>18</b>	Reservoir Westside Social Event Board of Directors Meeting <b>19</b>	<b>20</b>	<b>21</b>
<b>22</b>	<b>23</b>	<b>24</b>	Business Development PF&C Lecture 4 <b>25</b>	<b>26</b>	<b>27</b>	<b>28</b>