



Gulf Coast Section

DECEMBER  
2014

# CONNECT

SPE GULF COAST SECTION NEWSLETTER



**THE MEXICAN ENERGY  
REFORM: WILL MEXICO  
BE COMPETITIVE?**

INTERNATIONAL P. 21

**PANEL DISCUSSION:  
FRONTIERS IN  
PRODUCTION CHEMISTRY**

RESEARCH & DEVELOPMENT P. 15

**REFRACTURING  
HORIZONTAL SHALES —  
RECAPTURING  
BYPASSED PAY**

WESTSIDE P. 23

**OPPORTUNITIES IN  
SOUTHEAST ASIA**

GENERAL MEETING P. 17

**SPE-GCS  
SCHOLARSHIP**

2015-2016 APPLICATION

P. 27

[SPEGCS.ORG](http://SPEGCS.ORG)

# CHAIR'S CORNER



**JEANNE PERDUE**  
2014-2015 SPE-GCS Chair

**M**any people spend a lot of time in the month of December thinking about gifts, whether for Christmas or Hanukkah or Kwanzaa or even making year-end charitable contributions to lower one's income taxes. I thought I would share some information with y'all about the many generous gifts the SPE Gulf Coast Section has made to our local community, and where all this money comes from.

First, let's look at how much our Section has spent over the past 7 years on Education, which is mainly college scholarships for local high school students planning to major in engineering, and Community Services, which are mostly STEM-related things like Science Fairs, Career Fairs and Energy Day events. Since 2007, we have invested more than \$2.5 million in the Houston area to develop the workforce (and SPE members) of the future!

COMMITTEE	2007-08	2008-09	2009-10	2010-11	2011-12	2012-13	2013-14	7-YR TOTAL
Comm. Servs.	\$120,508	\$224,506	\$57,279	\$36,839	\$35,491	\$86,501	\$115,590	\$676,715
Education	\$151,263	\$169,757	\$451,359*	\$302,223	\$283,784	\$291,650	\$190,992	\$1,841,027
<b>Both</b>	<b>\$271,771</b>	<b>\$394,263</b>	<b>\$508,638</b>	<b>\$339,062</b>	<b>\$319,275</b>	<b>\$378,151</b>	<b>\$306,582</b>	<b>\$2,517,742</b>

In 2009\*, the SPE Gulf Coast Section donated \$250,000 to the University of Houston for a professorship, which was used to help recruit faculty for the newly resurrected BS Petroleum Engineering program. This program has skyrocketed, so another such donation has been requested. If our biannual Digital Energy Conference and ESP Workshop events are successful in 2015, we just might be able to do so.

Where does all this money come from? According to a nice Spotfire analysis done by our Vice Treasurer, Alex McCoy, our newsletter advertising revenue accounts for the largest share of net income in the past 7 years. Pat Stone, our long-time ad sales lady, has almost reached an all-time record of \$500,000 in newsletter ad sales this year – Thanks, Pat! When she reaches that milestone, we plan to celebrate! Our Golf, Tennis, and Sporting Clays Tournaments also raise considerable funds for our scholarships and STEM activities, so many thanks to our sponsors of those events for their support.



L to R: HCC Board Members Dave Wilson and Eva Loredó; Madeline Burillo, Associate Vice Chancellor for Workforce Instruction; Dr. Joanna Kile, Energy Institute Exec. Director; Carme Williams, Executive Director of the HCC Foundation; SPE-GCS Chair Jeanne Perdue; SPE-GCS Education Chair Gabby Guerre; Dr. Margaret Ford Fischer, NE Campus President; HCC Chancellor Dr. Cesar Maldonado; and Beatrice Emanuel-Sims, Director of Development for the HCC Foundation.

This year, our biggest gift went to Houston Community College Foundation: \$100,000 in total, with \$65,000 slated to buy instructional equipment, a.k.a. “rope, soap and dope,” for the RigOne roustabout training center, \$25,000 for scholarships for that roustabout certificate training program, and \$10,000 to replenish the Petroleum Technology (PetroTech) scholarship fund at HCC’s Energy Institute at the Northeast Campus, now that our original \$20,000 of scholarships have all been awarded.

It was a great privilege to be able to sign that check and to present a huge, oversized check at the HCC Board Meeting along with Gabrielle Guerre, our Education Chair, as the TV cameras were rolling (see photo). Everybody in that boardroom was so grateful and appreciative of our Section’s donation!

*Love, Jeanne*

### Committee %

Newsletter	21%
Golf	13%
ESP Workshop	12%
Sporting Clays	9%
Digital Energy	8%
YPs	7%
Continuing Ed	6%
Membership	5%
Tennis Tourn	5%
Facilities SG	3%
Other	12%

# CONTENTS

## STUDY GROUPS

- 9** **Reservoir**  
12.02.14  
Operational Excellence in O&G Upstream: What Is It and How Do We Achieve It?
- 11** **Business Development**  
12.03.14  
Gastar Exploration – An Expanding Product (and Profit) Turnaround Story
- 13** **Drilling**  
12.04.2014  
Oilfield Markets in 2015: Joint Luncheon with AADE
- 15** **Research & Development**  
12.05.14  
Panel Discussion: Frontiers in Production Chemistry
- 17** **General Meeting**  
12.09.2014  
Opportunities in Southeast Asia
- 19** **Northside**  
12.09.14  
Addressing the Water Management Challenge through Commitment to “Fresh Water Neutral”
- 21** **International**  
12.10.14  
The Mexican Energy Reform: Will Mexico Be Competitive?

- 23** **Westside**  
12.17.14  
Refracturing Horizontal Shales – Recapturing Bypassed Pay

## COMMITTEES

- 25** **Young Professionals**  
12.07.14  
Volunteering at the Beacon
- Auxiliary**  
12.12.14
- SPE Student Chapters**  
2.04.15- 2.06.15  
University of Texas, Texas A&M University, and University of Oklahoma
- 27** **SPE-GCS Scholarship**  
2015-2016 Application
- SPE-GCS Scholarship Fundraiser**  
03.28.15  
1st Annual Poker Tournament
- 29** **Career Management**  
12.17.14  
Ethics Seminar
- Petro Challenge**  
04.10.15



## IN EVERY ISSUE

- 5** **SPE-GCS September Membership Report**
- Volunteer Spotlight**  
Kimberly Thames Padeletti
- 6** **Then & Now**  
Buddy Woodroof
- 31** **Event Recap**  
SPE-GCS & SWE-HA Section joint membership networking
- Permian Basin Study Group & Community Service Group
- 34** **SPE-GCS Directory**

## BOARD OF DIRECTORS MEETING THURSDAY DECEMBER 18TH / 7:30 AM TO 10:30 AM

*Location* **SPE HOUSTON OFFICE**

10777 Westheimer Rd., Suite 1075 , Houston, TX 77042

*Event Contact* **SHARON HARRIS**

713-457-6821 / 713-779-4216 FAX / sharris@spe.org

Trust your parachute?



# one reliable solution. Entero<sup>®</sup> MOSAIC<sup>™</sup>

With over ten years of continuous progress and innovation for corporate reserves and evaluations, Mosaic has the product stability and client responsiveness that E&P companies have come to expect. Discover what it's like to have a system and team you can depend on to achieve your end goal.

- Better Productivity
- Higher Efficiency
- Faster Speed
- Trusted Information

Expect More. Accomplish More. Learn More at [www.entero.com/mosaic](http://www.entero.com/mosaic)  
Contact Jill Wyatt at: (713) 446-4633

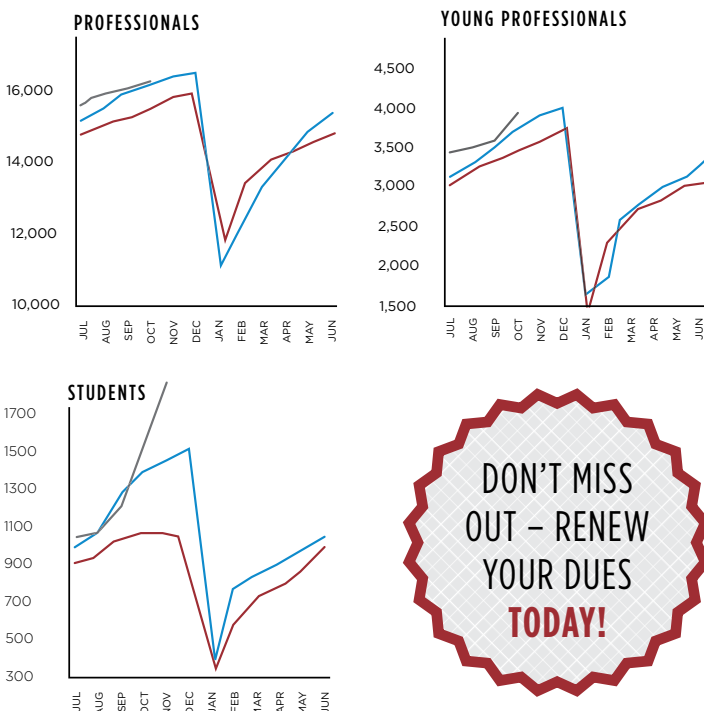
entero<sup>®</sup>  
energy software

# SPE-GCS MEMBERSHIP REPORT October 2014

**10.2014** | **09.2014**  
 TOTAL: **16,193** | TOTAL: **15,780**  
 YP: **3,763** | YP: **3,574**

	10.2014		09.2014	
SPE-GCS MEMBERS	TOTAL	YP	TOTAL	YP
New Members	232	114	112	51
Transferred to Section	1	1	9	6
<b>Unpaid</b>	<b>2,885</b>	<b>1,120</b>	<b>3,012</b>	<b>1,165</b>
STUDENT MEMBERS	PAID	UNPAID	PAID	UNPAID
Texas A&M	1,268	156	807	192
Rice	79	21	58	22
HCC	56	20	53	20
UH	470	163	341	170
<b>Total</b>	<b>1,873</b>	<b>360</b>	<b>1,259</b>	<b>404</b>
<b>Total Paid/Unpaid</b>	<b>18,066</b>	<b>3,245</b>	<b>17,039</b>	<b>3,416</b>
<b>% Paid</b>	<b>84.8%</b>		<b>83.3%</b>	

2011-2012    2012-2013    2013-2014



**DON'T MISS  
OUT – RENEW  
YOUR DUES  
TODAY!**



## VOLUNTEER SPOTLIGHT KIMBERLY THAMES PADELETTI



fter a brief hiatus from the Gulf Coast Section while she worked in Dubai and Milan, Kim Thames Padeletti has returned to Houston and has taken on the enjoyable task of resurrecting the Executive Breakfast, one of our Section goals for this year. She

has formed a committee, gotten the Past, Present, and Future SPE Presidents all to agree to attend, held several committee meetings, and networked with past organizers to glean best practices and lessons learned. Her SPE service before she went overseas included Community Service Chair on our section's YP Board and four years on SPEI's YP Advisory Board. She was also a panelist at SPE's ATCE in Florence, Italy, in 2010.

In her day job, Kim works on project risk management at BHP Billiton Petroleum. As a Project Risk Lead, she provides risk management guidance for all petroleum projects, including conventional deepwater, shale, and LNG, and she serves as a Functional Leader for the BHP Billiton Petroleum Investment Process. Prior to BHP Billiton, Kim worked for Occidental on the Iraq Zubair project, the Mukhaizna steamflood project, and the Elk Hills EOR field in Bakersfield. She was profiled as an "Extreme Engineer" by the Junior Engineering Technical Society. After earning a BS in Chemical Engineering from the University of Mississippi (Ole Miss – Hotty Toddy!), she served as a research assistant there working on NSF and DOE coal combustion thermal projects, and in 2013 she created a Mississippi School for Mathematics & Science engineering scholarship. During high school and university, she interned with the International Hydrographic Management and Engineering Program at the Naval Oceanographic Office at the John C. Stennis Space Center. Kim is also a member of EWB, SWE, DFS, and BHP Billiton's SPARK Business Knowledge Committee.

Kim is also spearheading efforts to start a new SPE-GCS study group focusing on shale technologies. "Considering Houston's proximity to Eagle Ford and that many Houston-based companies are investing in other shale plays, a dedicated group would provide a great opportunity to collaborate and learn how we can make shale more sustainable. This group will help disseminate information on new technologies, new services, best practices, benchmarking, lessons learned, safety, regulation, etc." she said. "The group aims to bring together the best shale expertise and ultimately become SPEI's leader in shale knowledge." If you are interested, contact Kim at [kim.thames@bhpbilliton.com](mailto:kim.thames@bhpbilliton.com) and have her add your name and member number to the petition.

# THEN & NOW

COLUMN BY BUDDY WOODROOF

## DECEMBER 1964

Drilling contractor Loffland Brothers reports plans to have the GOM's deepest jackup rig in service next month. The Oceanmaster I will work in 300 ft of water, 50 ft deeper than any existing jackup.

The Federal Power Commission forecasts nuclear energy grabbing 19% of the power generation market by 1980.

A five-ton double sphere underwater rest and observation station for underwater divers will soon be available to extend the ocean bottom operating time. The upper atmospheric pressure sphere will house two supervisory observers/engineers, while the lower pressurizable sphere will house two working divers who will enter and exit through a hatch in the bottom.

Smackover-Jurassic deep producers have the wildcatters scurrying for leases in Mississippi and Alabama.

**East Texas crude oil - \$3.10/bbl; U.S. active rig count - 1,576**

## DECEMBER 1989

The preliminary hearing for Exxon Valdez skipper Joseph Hazelwood, the principal focus following the massive Prince William Sound oil spill, opens in Anchorage.

The U.K. DOE approves Oxy's plans to redevelop the Piper field in the U.K. North Sea, approximately 800 m south of the site of the Piper Alpha platform explosion that took 167 lives in July, 1988.

Enron signs a letter of intent with the Fuel-Energy Complex of the U.S.S.R. Council of Ministers to jointly pursue E&P, design and construction of LNG plants, gas-fired cogeneration and cyclic electric generation projects, and enhancement of gas pipelines and natural gas liquids operations. (Questionable bedfellows for sure!)

BP reports plans to spend \$250 million to develop Mississippi Canyon blocks 109 and 110 with a 35-well platform in 1,053-ft water depth, just short of the existing record, at Shell's Bullwinkle platform.

**West Texas Intermediate crude oil - \$20.39/bbl; U.S. active rig count - 1,062**

## DECEMBER 2004

In a typical Hugo Chavez move, he chooses PDVSA's President Alf Rodriguez Araque to also serve as Venezuela's energy minister.

Meanwhile, a leaking tanker transporting 325,000 bbl of Venezuelan crude oil to a refinery in New Jersey creates a 20-mile oil slick on the Delaware River.

Shell's Nigerian operations at their Ekulama flow stations are shut down due to 200 protesting Nigerian youths converging on the stations to win compensation for exploration on their land, to secure jobs from Shell, and to seek remediation of an oil spill in the area.

Russia opens bidding for a Yukos subsidiary being auctioned off due to delinquent taxes. A \$1.7 billion deposit is required in order to bid, and the "reserve" is \$8.6 billion. (Too rich for my blood!)

**Light sweet crude oil - \$41.92/bbl;  
Natural gas - \$6.79/MMbtu;  
U.S. active rig count - 1,250**

## THE REST OF THE YARN

This month we begin a look back at the life and times of Andrew Carnegie

# T

his month we begin a look back at the life and times of industrialist Andrew Carnegie, the real "Man of Steel," who made a fortune and then gave it away.

Born in Scotland on November 25, 1835, the son of a weaver named William Carnegie and his wife Margaret

Morrison Carnegie, young Andy grew up surrounded by radical politics. His father was an advocate of Chartism, an important movement of the British working class that objected to the domination of Parliament by the aristocracy. "My childhood's desire," wrote Andrew, "was to get to be a man and kill a king." Chartism eventually collapsed, but some of its

themes would inform Carnegie's later life.

He was a feisty boy, ambitious and self-confident, seemingly capable of killing a king or two, but he never got the chance. In the late 1840's the elder Carnegie was left jobless by changes in the weaving industry. The family packed up and moved to America, settling in a poor section of the Pittsburgh area. Andy, age 12, quit school and plunged cheerfully into the world of work, finding employment in a cotton mill and in the telegraph industry. In 1859, at age 24, he was named divisional superintendent for the Pennsylvania Railroad. To each of his jobs he brought intelligence and imagination and the sort of relentless vigor that allowed him to get

a lot done and irritate the heck out of his staff. He wrote of his railroad days, "Never knowing fatigue myself, I overworked the men and was not careful enough in considering the limits of human endurance."

Next month, Andrew is bitten by the capitalism bug.

---

**THEN & NOW**  
D E C E M B E R  
**QUIZ**

How many active oilfields existed in Spain circa 1965: a) none, b) one, c) three, d) five, or e) eight?

**ANSWER TO  
NOVEMBER'S QUIZ**

*The first American multi-millionaire was John Jacob Astor (New York City real estate tycoon) and the first American billionaire was John D. Rockefeller (oil baron).*

**CONGRATULATIONS  
TO OCTOBER'S WINNER**

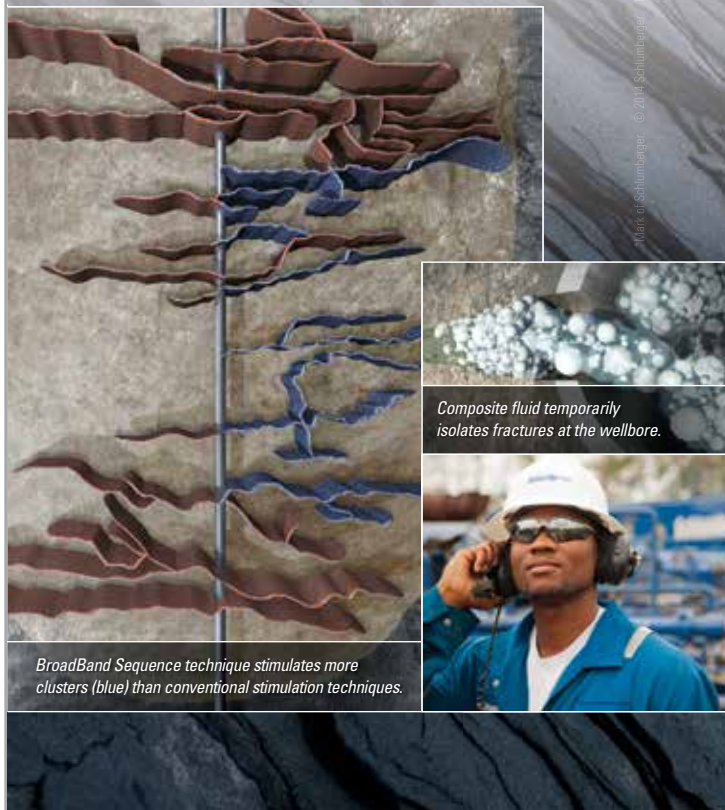
Scott Doyle with  
Anadarko Petroleum

---

If you would like to participate in this month's quiz, e-mail your answer to [contest@spe.org](mailto:contest@spe.org) by noon, December 15. The winner, who will be chosen randomly from all correct answers, will receive a \$50 gift card to a nice restaurant.

## BroadBand Sequence

FRACTURING TECHNIQUE



Composite fluid temporarily isolates fractures at the wellbore.

BroadBand Sequence technique stimulates more clusters (blue) than conventional stimulation techniques.

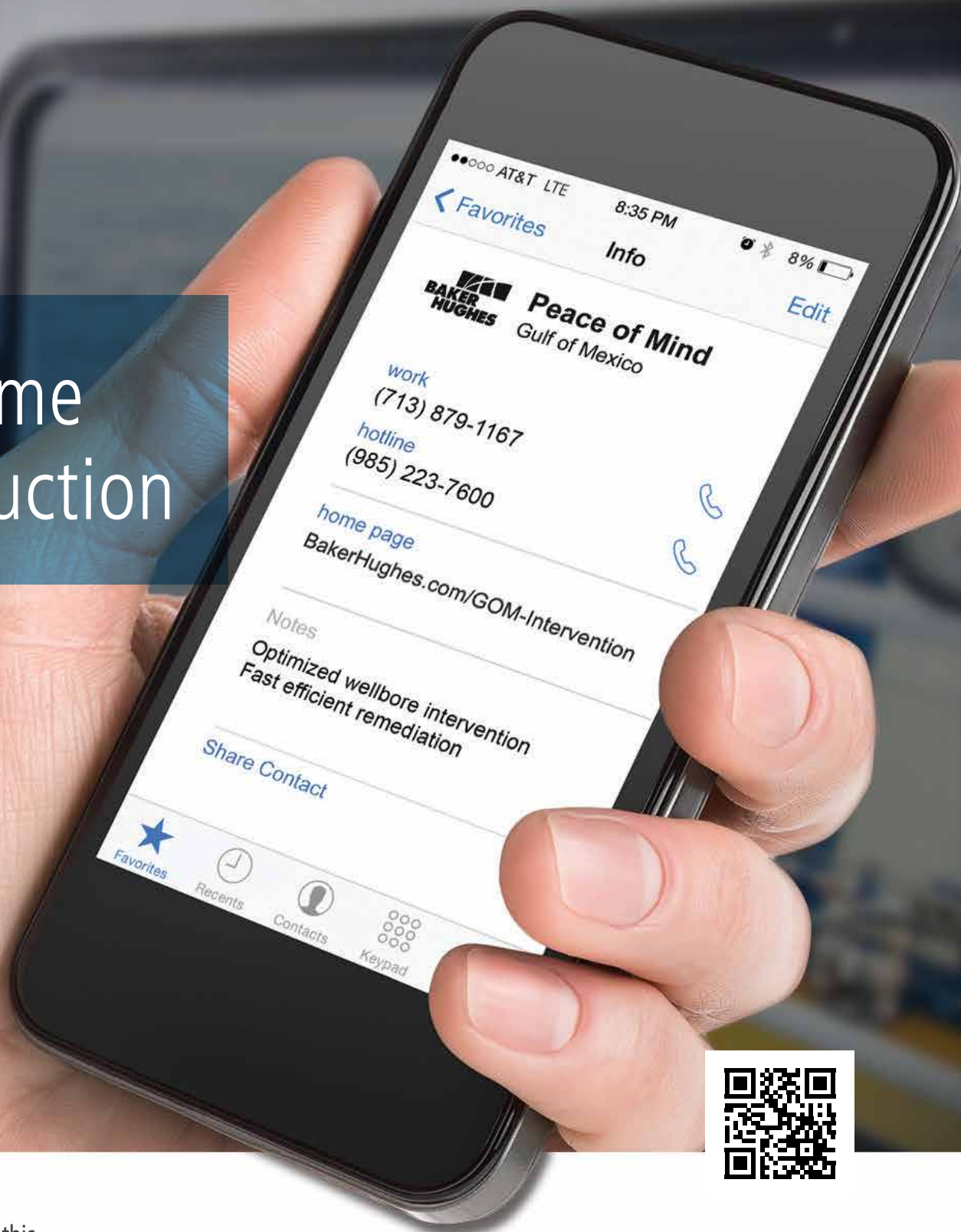
## Marathon Oil increases productivity in Eagle Ford Shale well by 21%.

The BroadBand Sequence\* fracturing technique effectively stimulated perforation clusters that would not have produced by conventional techniques. Enabled by a proprietary engineered composite fluid of degradable particles and fibers, the BroadBand Sequence technique increased production by 21% over 115 days.

Read the case study at  
[slb.com/BroadBand](http://slb.com/BroadBand)

**Schlumberger**

# Resume Production



You planned for this.

You have the experience and expertise of the global leader in wellbore intervention on speed dial to solve problems so production can resume.

Call us or visit [BakerHughes.com/GOM-Intervention](http://BakerHughes.com/GOM-Intervention) today for peace of mind tomorrow.





## RESERVOIR

# Operational Excellence in O&G Upstream: What Is It and How Do We Achieve It?

Operational Excellence (OE) is often, and inaccurately, used in the industry to refer to a variety of desirable attributes. Some executives use it to speak about high levels of operational integrity or safety, others to being top quartile in costs or efficiency, and yet others to the ability of continuously improving over time. All these attributes can be outcomes of achieving OE, but they hardly define it. Operational Excellence is a structured way of working that translates clear aspirations into systems that are repeatedly applied to achieve ever-improving performance. Anything short of a systematic way of working cannot translate into sustainable top results, period.

Some companies already have years of experience in applying systematic ways of working to different degrees of success. Furthermore, many companies run parts of their operations in this way, but have not managed to transfer these skills to other places. Others have tried to apply what works well in one place to another without recognizing that some practices are just not transferrable or that there is more than practices and procedures to changing ways of working. Whatever the starting point, chances are that there is still significant room to get better, to reach Operational Excellence.

In this session, Pedro Caruso, a partner at Bain & Company, will share experiences across the industry on improving performance and building systems to reach OE.

### PEDRO CARUSO



Pedro Caruso is a partner at Bain & Company, based in Houston, TX. He works with oil and gas industry executives to define their companies' strategies and transform their operating models and organizations to deliver on the expected benefits. In addition, he also helps industry executives find and capture performance improvement opportunities. Pedro has worked across the oil and gas value chain,

including seismic, upstream capital projects, refining, supply and trading, marketing and fuel retailing.

Apart from consulting, Pedro worked at Petroleos de Venezuela and Kuwait Petroleum Corporation, two of the largest National Oil Companies in the world. Pedro holds a MBA from Columbia Business School, a MS in Finance from IESA, and a BS in Chemical Engineering from the Universidad Simon Bolivar. He graduated with honors in all three instances. Pedro is originally from Venezuela, and has been living in the U.S. for over twelve years.



### EVENT INFO

Tuesday  
**12.02.14**

11:30 AM TO 1:00 PM

### SPEAKER

Pedro Caruso  
Partner  
Bain & Company

### LOCATION

Petroleum Club  
800 Bell St #4300  
Houston, TX 77002

### EVENT CONTACT

Rafael Barroeta  
281-701-6062  
Rafael\_barroeta@oxy.com

### MEMBERS

\$35/\$45 WALK-INS

### NON-MEMBERS

\$40/\$45 WALK-INS

# PHDWIN™

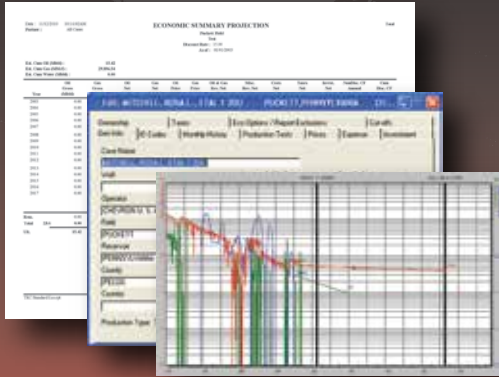
Integrated Economics & Decline Curve Analysis

NOW EVEN MORE POWERFUL WITH

# PHDRMS™

Reserves Management System

The *complete solution* for evaluating, managing, and reporting reserves and performance data.



Schedule an **online** presentation **TODAY!**

TRC Consultants, LC    888-248-8062    [www.phdwin.com](http://www.phdwin.com)

## WELLSITE GEOSCIENCE SERVICES



**When time is money,  
Wellsite Geoscience is  
money well spent.**

Whether you're exploring a basin, producing a well or completing a shale play, time is money. That's why Weatherford Laboratories brings a suite of formation evaluation technologies right to the wellsite. Utilizing mud gas and cuttings, these technologies provide detailed data on gas composition, organic richness, mineralogy and chemostratigraphy in near real time. As a result, operators now have an invaluable tool to assist with sweet spot identification, wellbore positioning, completion design and hydraulic fracturing. We call it Science At the Wellsite. You'll call it money well spent.

SCIENCE AT THE WELLSITE™  
[www.weatherfordlabs.com](http://www.weatherfordlabs.com)

Formation Evaluation | Well Construction | Completion | Production



©2013 Weatherford. All rights reserved.

A man with a beard is shown in profile, looking at a computer monitor. The monitor displays various data charts and graphs. A large, semi-transparent green circular graphic with a grid and numbers is overlaid on the background. The text 'no longer flying under the radar' is written across the middle of the image in white on a green background.

no longer flying under the radar

**Precision**  
Directional Services  
[precisiondrilling.com/directional](http://precisiondrilling.com/directional)

## BUSINESS DEVELOPMENT

## Gastar Exploration - An Expanding Product (and Profit) Turnaround Story

Join us at the Four Seasons Hotel as Russell Porter updates us on Gastar's recent transformation. Gastar has transformed from a company with 100% natural gas production in 2010, to one that receives over 70% of its revenues from liquids and possesses a solid portfolio offering one of the most attractive oil and gas investment opportunities in the US. This change was driven by management vision, disciplined leasing, opportunistic property acquisitions and operational execution. Mr. Porter will review the latest events around Gastar's position in Appalachia, both within the core Marcellus and its top notch rocks of the Utica / Point Pleasant formations. He will also fill us in on one of the most interesting organic growth stories in the MidContinent targeting the Hunton Limestone, a formation, together with the Woodford Shale and the Meramec, that is currently receiving a renewed focus due to its strong liquids-driven results.

### J. RUSSELL PORTER



J. Russell Porter has been a member of Gastar's Board and served as its President and Chief Executive Officer since February 2004. From August 2006 until January 2010, he also served as Chairman of the Board. From September 2000 to February 2004 he was the Chief Operating Officer of the company. Mr. Porter has an energy-focused background, with approximately 19 years of natural gas and oil exploration and production experience, and five years of banking and investment experience specializing in the energy sector. From April 1994 to September 2000, Mr. Porter served as an Executive Vice President of Forcenergy, Inc., a publicly traded exploration and production company, where he was responsible for the acquisition and financing of the majority of its assets across the United States and Australia. He currently is a director of Caza Oil & Gas, Inc., a publicly traded exploration and development company listed on the Toronto Stock Exchange and the London AIM exchange. He also is a member of the Board of Directors of Petrel Energy Ltd., a publicly traded Australian based E&P company with assets in Uruguay and Spain. Mr. Porter holds a Bachelor of Science degree in Petroleum Land Management from Louisiana State University and a MBA from the Kenan-Flagler School of Business at the University of North Carolina at Chapel Hill.



### EVENT INFO

*Wednesday*  
**12.03.14**

5:00 PM TO 7:00 PM

### SPEAKER

J. Russell Porter  
President and Chief  
Executive Officer  
Gastar Exploration

### LOCATION

Four Seasons Hotel  
1300 Lamar  
Houston, Texas 77010

### EVENT CONTACT

Matt Bormann  
281-345-8019  
mbormann@wwtco.co

### MEMBERS

\$40 in advance online  
\$50 at the door

### NON-MEMBERS

\$45 in advance online  
\$50 at the door

# CoolSet™

Curable Resin-Coated Proppant

## Prevent proppant flowback without activator

CoolSet proppant – frac fluid and breaker friendly – is your no-activator, low-temperature solution to enhance conductivity and increase hydrocarbon production.

Get more from your wells at [FairmountSantrol.com/CoolSet](http://FairmountSantrol.com/CoolSet)



For direct technical data  
CoolSet Product Director  
Taso Melisaris  
713.234.5450 x 42271  
[Technology@FairmountSantrol.com](mailto:Technology@FairmountSantrol.com)



**Still GROWING...**  
and revolutionizing Downhole Video Diagnostic services

See what others can only imagine! Experience reality with our patented LiteSabre® diffused lighting and up to 1000 lumens in an OptiGel™ clear window strategically displaced to the problem area downhole.

- E-line Down and Side View Video Surveillance
- 16 Hours of Slickline or CT-Deployed Memory Video
- 30 frames P/S, High-Definition Color Video Recording
- Shallow Work Video

Bringing new technology to the challenges of downhole image capture.



[www.abrado-intl.com](http://www.abrado-intl.com)  
Email us at: [info@abrado-intl.com](mailto:info@abrado-intl.com)



[www.top-co.ca](http://www.top-co.ca)  
1.832.300.3660



[topcosales@top-co.ca](mailto:topcosales@top-co.ca)

**Fit-for-Purpose Casing, Cementing, and Completion Solutions**

Ask our Petroleum Engineers how we can help you :

- Reach TD
- Achieve Zonal Isolation
- Ensure Wellbore Integrity

## DRILLING

# Oilfield Markets in 2015: Joint Luncheon with AADE

The global oilfield equipment and service market enjoyed record years in 2011, 2012, 2013 and 2014 while oil prices were stable to slightly declining. Some markets, like hydraulic fracturing and directional drilling, have almost doubled since the 2009 recession, while some markets, like geophysical, have fallen.

Richard Spears will present his firm's 2015 outlook for key oilfield service and equipment markets, along with a basin by basin overview of spending in the US shale plays.

### RICHARD SPEARS



With an engineering degree from Oklahoma State University and graduate work in industrial engineering, Richard Spears has worked for 35 years in the upstream oil and gas industry, starting as a field engineer for Halliburton. Today, Richard is one of the managing directors of Spears & Associates, an oilfield market research firm founded in 1965. The firm has over 400 clients worldwide. Richard has been with the firm since 1985 and leads the firm's mergers and acquisitions support practice.

Richard is a 30-year member of the Society of Petroleum Engineers (SPE 1141910) and was an SPE Distinguished Lecturer 2005-2006. He is also a 29-year member of the Association of Energy Service Companies.

Richard is on the board of directors of several oilfield service companies: Federal Flange, a subsea high-pressure connector manufacturer; Allied Horizontal Wireline, a wireline logging company that is commercializing GE's digital openhole logging technology; Abrado Wellbore Services, a deepwater wellbore cleanout and downhole video company; and W-Technology, a manufacturer of directional drilling components.



### EVENT INFO

*Thursday*

**12.04.14**

11:30 AM TO 1:00 PM

### SPEAKER

Richard Spears  
Managing Director  
Spears & Associates, Inc

### LOCATION

Petroleum Club  
800 Bell St.  
Houston TX 77002

### EVENT CONTACT

Tom Wick  
713-806-2631  
tom.wick@nov.com

### MEMBERS

\$35

### NON-MEMBERS

\$40

# THE MISSING PIECE TO MAXIMIZE YOUR PRODUCTION



You can't put together the puzzle without all the pieces. MicroSeismic's completions evaluation services and real-time microseismic monitoring help you fill in the blanks with recommendations on improved well spacing and stage length, frac coverage area, and analysis on how each well is completed. Our goal is to provide transparent results that you can rely on to maximize your production.



[MicroSeismic.com/GCSPE](http://MicroSeismic.com/GCSPE) | 866.593.0032

**PATENTED proNova™ by TDE**

## DRILLING PERFORMANCE

**CREW PERFORMANCE MEASUREMENTS**

**AUTOMATIC OPERATIONS DETECTION**

**INVISIBLE LOST TIME DETECTION**

281.755.7595  
[www.pronova-tde.com](http://www.pronova-tde.com)

## PREMIUM CONNECTIONS

Meeting your exacting requirements.

SealLock® | WedgeLock®  
TKC™ | TS™  
connection technology



[www.huntingplc.com](http://www.huntingplc.com)

© 2013 Hunting

## RESEARCH &amp; DEVELOPMENT

## Panel Discussion: Frontiers in Production Chemistry

The hardware and software technologies utilized in the oil & gas industry are a highly visible form of innovation enhancing the exploration of reserves. The application of chemical technologies throughout the upstream/downstream lifecycle are a less visible, but critical component in oilfield success. A major area of interest in oilfield chemistry is in the realm of production enhancing technologies having a direct impact on recovery, transport, refinement, etc. This panel discussion will focus on the chemical challenges facing the future needs of the oil and gas industry as it develops fields into the 21st century. Topics will be discussed such as asset integrity in extreme conditions, scale and deposit control in deep and ultra deep water applications, separation technology in heavy crudes, and paraffin control in high pour crudes.

### SPEAKERS

#### MIKE DEIGHTON

Director of Technology, Chemicals & Industrial Services - Upstream Chemicals  
Baker Hughes, Inc.

#### DAVID HORSUP, PH.D.

Vice President, Research, Development and Engineering, Nalco Champion

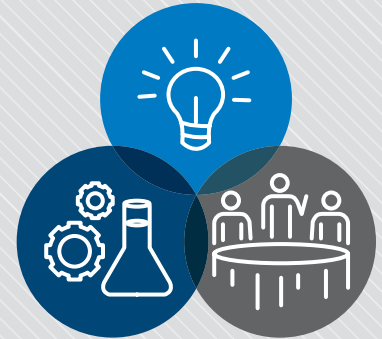
#### LEE MORGENTHALER, PH.D.

Senior Staff Production Chemist, Shell

#### WEI WEI, PH.D.

Technical Team Leader of Production Reliability and Fluid Optimization,  
Reservoir Production Engineering Department, Chevron

Please refer to the SPE Gulf Coast Section website for  
the biographical information on the panelists



### EVENT INFO

*Friday*

**12.05.14**

11:30 AM TO 1:00 PM

\*Please note this meeting is  
on Friday instead of our  
normal Thursday date.

### LOCATION

Westchase  
9990 Richmond Avenue  
Suite 102  
Houston, Texas 77042

### EVENT CONTACT

Skip Davis  
281-359-8556  
skdavis@  
technologyintermediaries.com

### MEMBERS

\$35

### NON-MEMBERS

\$40

**SIGNA ENGINEERING CORP.**

*Petroleum Engineering*  
*MPD, MudCap and UnderBalanced Drilling*  
*Well Construction*  
*Project Management*  
*Field Execution*  
*Custom Software Design*  
*Custom Training*

**Managed Pressure Drilling School**  
 Once per Quarter  
 Every Year

2 Northpoint Dr., Ste. 700  
 Houston, TX 77060  
 281.774.1000

**Experience Signature Performance**  
[www.signa.net](http://www.signa.net)

ORANGE IS THE NEW GREEN

Flotek's citrus-based, environmentally friendly **CnF<sup>®</sup>** fracturing additives will revolutionize the way the world thinks about fracturing and will improve your production.

For more information contact  
[cesimkt@flotekind.com](mailto:cesimkt@flotekind.com)  
 or call  
 832-308-CESI (2374)

**PetroSkills<sup>®</sup>**

To maximize convenience, PetroSkills will deliver our most popular courses multiple times in Houston for the first few months of 2015.

*Enroll soon to ensure your seat!*

- **Basic Petroleum Engineering Practices – BE:**  
 2-6 February, 20-24 April
- **Production Operations 1 – P01:**  
 16-27 March, 1-12 June
- **Applied Reservoir Engineering – RE:**  
 16-27 February, 20 Apr - 1 May, 1-12 June
- **Completions and Workovers – CAW:**  
 23-27 February, 9-13 March, 20-24 April, 18-22 May

For details on these or our other 250 sessions in the Gulf Coast, contact Patty Davis. (832) 426-1203 or [patty.davis@petroskills.com](mailto:patty.davis@petroskills.com), or see details and full selection at [www.petroskills.com](http://www.petroskills.com)

Did you get your copy of our 2014-15 Training Guide?  
 If not, sign up for free at [www.petroskills.com/contact](http://www.petroskills.com/contact)

**PathView**  
 Well Path Visualization Software

- 2D and 3D view
- Lithology
- Anti-collision
- and more ...

**RI** Pegasus Vertex, Inc.  
 (713)981-5558 | [sales@pvsoftware.com](mailto:sales@pvsoftware.com) | Houston, USA

**NSI Technologies Training**

In-house and industry-wide training for fracture design, analysis, and software led by industry experts.

Courses include:

- Hydraulic Fracturing
- Applied Fracturing Pressure Analysis
- Fracing for Non-Fracers
- Fracture Pressure Analysis
- Fracpacking for Sand Control
- StimPlan™ User Course
- StimPlan™ Fracture Theory and Design
- Acid Fracturing

For more info & to register visit: [www.nsitech.com](http://www.nsitech.com)



## GENERAL MEETING

# Opportunities in Southeast Asia

**Joint meeting of the SPE-GCS General Meeting and the Houston Chapter of the American Petroleum Institute (API)**

Our program will have two exceptional speakers who will address some very timely topics of primary interest to our oil and gas community in Southeast Asia. We will learn about the oil and gas equipment and services sector in Southeast Asia in general with a focus on Malaysia and Singapore. Investment and development opportunities in Southeast Asia will also be discussed.

### NURUL SHAMS RUSLI

Nurul Shams Rusli was appointed to his current role in June 2014. He is a certified public accountant and a registered member of Malaysian Institute of Accountants. Shams commenced working for MIDA as an Economic Executive in 2002. He served as Deputy Director of MIDA in Los Angeles from 2007 to 2010. Subsequently, he became the Deputy Director of the Foreign Investment Coordination Division, responsible for MIDA's Investment Promotion Strategies and Programs globally and domestically, overseeing US and Asian offices. Shams graduated from the University Utara Malaysia with a Bachelor of Accountancy (B.A. Honours) in 1997. MIDA is the government's principal agency for the promotion of the manufacturing and services sectors in Malaysia. MIDA assists companies intending to invest in the manufacturing and services sectors, as well as facilitates the implementation of their projects.

### JONATHAN YAP

Jonathan Yap is the current Center Director of EDB Houston and was appointed in February 2014. Jonathan is in charge of EDB's industry promotion efforts in Texas for the oil & gas and technology industries. Prior to his current appointment, Jonathan was part of the consumer electronics and upstream oil & gas sectors in Singapore, where he helped companies establish and expand their base of operations. Jonathan graduated with a Bachelor of Science in Engineering (Hons), Biomedical Engineering from the University of Michigan Ann Arbor, and subsequently, a Master of Science in Engineering, Biomedical Engineering from the University of Michigan Ann Arbor. EDB is the lead government agency for planning and executing strategies to enhance Singapore's position as a global business center. They dream, design and deliver solutions that create value for investors and companies in Singapore. Their mission is to create sustainable economic growth with vibrant business and good job opportunities for Singapore.



### EVENT INFO

*Tuesday*  
**12.09.14**

11:30 AM TO 1:00 PM

### SPEAKERS

Nurul Shams Rusli  
Director of MIDA Houston  
Malaysian Investment  
Development Authority (MIDA)

Jonathan Yap  
Center Director of EDB Houston  
Singapore Economic  
Development Board

### LOCATION

Petroleum Club  
800 Bell St.  
Houston TX 77002

### EVENT CONTACT

Barry Faulkner  
281-627-8790  
barryfaulknerf@earthlink.net

### MEMBERS

\$35

### NON-MEMBERS

\$40

# Take the Shock Out of Your Drilling Operations

Keep your drill bits running longer and deeper with the APS Active Vibration Damper™ system

- Adapt to a continuously changing environment
- Suppress undesired drilling dysfunctions
- Extend bit & drilling tool life
- Improve overall rate of penetration
- Significant cost/foot savings



For more information,  
visit [www.aps-tech.com](http://www.aps-tech.com)  
or call us at 281.847.3700



## Turnkey Services Turnkey Trust

We manage your drilling cost and execution risks with **all-inclusive, fixed-price contracts.**

For independent oil and gas producers focused on generating and bringing on prospects for their investors, turnkey services are an ideal way to manage cash and mitigate the risks associated with drilling and completing wells in their portfolio. Commander assumes risk under a fixed cost, turnkey basis, which means our clients can get to first oil safely and faster. Our strength lies in the depth of our engineering and operations. No other turnkey company has our range of Gulf Coast geological expertise—knowledge that comes from drilling and completing over 2,000 wells on the Gulf of Mexico shelf and Texas/Louisiana inland waters. **It all comes down to trust.**

[www.commanderdrilling.com](http://www.commanderdrilling.com)

Commander Drilling Technologies LLC  
10190 Katy Freeway, Suite 351  
Houston, Texas 77043



### ENGINEERS OF ALL DISCIPLINES

Want to get Professionally Registered  
But have not passed the FE Examination  
And have been out of college more than four years  
Then contact us to find out how to get prepared  
And pass the FE Exam the first time.  
The technique has a 98% + pass rate to date.

Next FE Exam Dates:  
April 18 and October 31, 2015

P: 405-822-6761 | E: [bingwines@cox.net](mailto:bingwines@cox.net)  
[winrockengineeringinc.com](http://winrockengineeringinc.com)

VIBRATION TECHNOLOGY  
LEADING THE INDUSTRY IN STUCK PIPE RECOVERY  
INNOVATIVE TECHNOLOGY FOR REMOVING STUCK TUBULARS

- + WORKOVER
- + COMPLETIONS
- + DRILLING



[www.layne.com](http://www.layne.com)



NORTHSIDE

# Addressing the Water Management Challenge through Commitment to “Fresh Water Neutral”

Water and Energy are two of the most important concerns of the world today. In early 2013, Southwestern Energy (SWN) committed to achieve ‘Fresh Water Neutral’ by 2016 and launched our ECH2O (Energy Conserving Water) initiative to address the many challenges our industry faces regarding our use of water in unconventional resource plays. This presentation will discuss how SWN will implement its ECH2O initiative for existing fields as well as new areas where we are just starting. Our focus has been directed at four key areas of water use and water management: protection, reduction, innovation, and conservation. An overview of each of these areas will highlight our projects that are directed at the protection of surface and groundwater resources, reduction of fresh water volumes and the use of alternatives to fresh water. The overview will also present innovative technology developments in water treatment and conservation efforts that improve water quality and availability in the communities where we work.

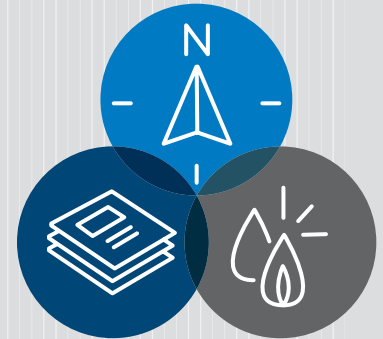
Engaging the creative energy of our industry with effective management of water resources, combined with attention to the water priorities of the communities where we work, will be vital to our future success.

## KAREN OLSON



Karen Olson is the Director of the Strategic Solutions Team, accountable for bringing Southwestern Energy (SWN) to Freshwater Neutral by 2016. She is also working with operations to develop operational opportunities that balance the economic and environmental impact of the operations. Prior to this, she was the Corporate Completion Engineering Chief and Completion Expert for SWN in Fayetteville, Texas. Previous work experiences include 10 years with BP as a Completion Team Leader in GOM Deep Water and the Stimulation Team Leader in the North Sea, and 14 years with Mobil. She has been a Completion/Reservoir Engineer for over 30 years with expertise in the design/modeling (both pre and post) and operational execution of hydraulic fracturing. She has a MS and a BS in Petroleum Engineering from Texas A&M and LSU, respectively.

Karen has been a committee member of numerous SPE forums, workshops and conferences related to hydraulic fracturing. For the last seven years, she has been a Guest Editor for the Deepwater and Hydraulic Fracturing section of the Journal of Petroleum Technology. In 2009, she was awarded the SPE Gulf Coast Section Region Production and Operations Award. She has been serving as the Chairperson for SPE Hydraulic Fracturing Conference since 2014.



### EVENT INFO

Tuesday  
**12.09.14**

12:00 PM TO 1:30 PM

### SPEAKER

Karen Olson  
Director of Strategic Solutions Team  
Southwestern Energy

### LOCATION

Greenspoint Club  
16925 Northchase Dr.  
Houston, Texas 77060

### EVENT CONTACT

Sumitra Mukhopadhyay  
281-784-5742  
smukhopadhyay  
@superiorenergy.com

### MEMBERS

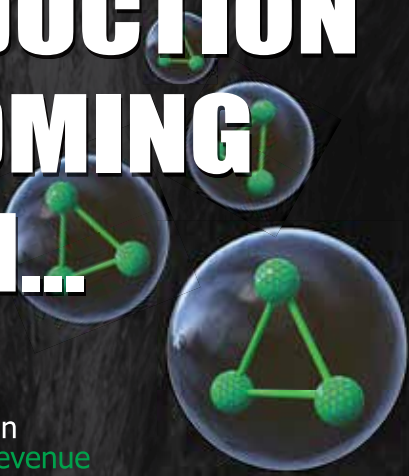
\$35/\$50 Walk-In

### NON-MEMBERS

\$40/\$50 Walk-In

# ProTechnics

# KNOW WHERE PRODUCTION IS COMING FROM...



Maximize Production  
+++ Increase Revenue

For more information on FlowProfiler, visit us at [www.corelab.com/protechnics](http://www.corelab.com/protechnics) or call us at 713-328-2320

FLOW  
PROFILER  
OIL



## Fluid Diagnostic Tracer

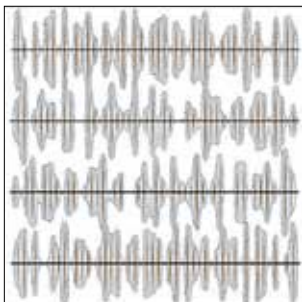
The industry's first comprehensive after-frac flow profile tracer technology that simultaneously evaluates both frac fluid clean-up and hydrocarbon production over time.

FLOWPROFILER provides critical information such as:

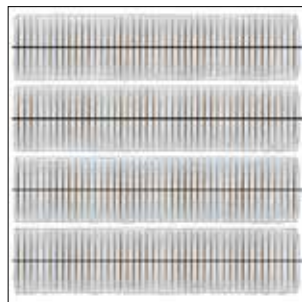
- Simultaneous Zonal Clean-Up & Production
- Hydrocarbon Production Indexed to Geologic Horizons
- Hydrocarbon Production Over Time
- Well Spacing Insights



The most efficient field frac network starts with predictable frac spacing and predictable frac volume.



Unpredictable



Predictable

Plug-and perf cannot deliver predictable, consistent frac results, and neither can open-hole completions. With Multistage Unlimited single-point injection, fracs initiate right where you plan them and proppant volume in every frac is exactly what you want. The result: an efficient field frac network for maximum reservoir connectivity.



[ncfrac.com](http://ncfrac.com)  
+1 281.453.2222  
[info@ncfrac.com](mailto:info@ncfrac.com)



©2014, NCS Energy Services, LLC. All rights reserved. Multistage Unlimited and "Leave nothing behind." are trademarks of NCS Energy Services, LLC. Patents pending.

## Integrated Energy Services, Inc.

Robert Barba  
Petrophysicist

Log Analysis  
Completion Optimization

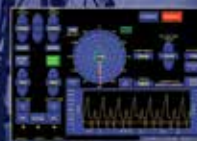
500 N. Capital of TX Hwy  
Building 4-150  
Austin, TX 78746  
C: (713) 823-8602  
F: (713) 583-9400  
[RBarba75@gmail.com](mailto:RBarba75@gmail.com)

[www.integrated-energy-services.com](http://www.integrated-energy-services.com)

## Slider

Automated Directional Drilling

### IMPROVE YOUR HORIZONTALS



- ON-BOTTOM TOOL FACE ORIENTATION
- INCREASED MOTOR LIFE
- INCREASED ROP & HORIZONTAL REACH CAPABILITY
- ELIMINATES ORIENTATION TIME LOSSES

[slb.com/Slider](http://slb.com/Slider)

## INTERNATIONAL

# The Mexican Energy Reform: Will Mexico Be Competitive?

Late last year, the Mexican government approved a constitutional change that opened the country's oil and gas industry to foreign investment, ending 76 years of state monopoly. With the first round of bidding planned for next year, Alan Cunningham, Technical Director at Gaffney, Cline & Associates, will seek to answer the question: "will Mexico be competitive?"

Alan's presentation will examine the three factors companies are likely to consider when evaluating investment opportunities in Mexico. These include: i) the nature of the resource potential, ii) the fiscal attributes of the new Mexican contract regimes, and, iii) non-technical risk factors that might impact investment decisions. Using these criteria, Alan will compare Mexico to its primary North and South American competitors for upstream investments.

### ALAN CUNNINGHAM



Alan Cunningham is currently the Technical Director of the energy industry consulting firm Gaffney, Cline & Associates. He has 40 years of experience in the petroleum industry, and has held a variety of executive roles.

Alan holds bachelor's degrees in Geology and Political Science from the University of Texas and a law degree from the South Texas College of Law. He began his career in geophysics prior to joining Union Texas Petroleum in 1981 to work in negotiations. He directed negotiations for international projects, joint-venture operations, and product sales before moving into senior executive roles for Union Texas Petroleum, in Jakarta and their Houston home office.

In 1998, he became the President of Entegriy Ventures International, and from 2002 to 2008 he served as the President and CEO of Swift Energy in New Zealand. Prior to joining Gaffney, Cline & Associates in 2013, he worked for the World Bank, providing the governments of Cambodia, Papua New Guinea, Bangladesh, and Nigeria, among others, with energy policy advice.

In his current role, Alan leverages his vast industry experience to advise clients on fiscal policy matters, licensing rounds, field development planning, reservoir performance analysis, and settlement of legal and arbitration disputes through expert witness reports and testimony.



### EVENT INFO

*Wednesday*  
**12.10.14**

11:30 AM TO 1:00 PM

### SPEAKER

Alan Cunningham  
Technical Director  
Gaffney, Cline & Associates

### LOCATION

The Petroleum Club  
Discovery Room  
800 Bell, 43rd Floor  
Houston, TX 77002

### EVENT CONTACT

Mark Sokolow  
281-286-9749  
mtsokolow@yahoo.com

### MEMBERS

\$35/\$40 Walk-Ins

### NON-MEMBERS

\$40

# A Better Way to Frac

Take a look at the Binder MM Hybrid Frac Polymers...Field tested with Excellent Results

Feature	MM 200	Slickwater FR	Guar	MM 301
Drag Reduction Dose <sup>(1)</sup>	<0.2 gpt <sup>(2)</sup>	0.6 gpt	NA	<0.2 gpt
Sand Suspension Dose	3-5 gpt	NA	6-9 gpt	3-5 gpt
Sand Loading/Stage <sup>(3)</sup>	120-140%	None	100% <sup>(3)</sup>	120-150%
Divalent/TDS <sup>(4)</sup>	Up to 10% TDS	Varied	Low	Unlimited
Crosslinkable <sup>(5)</sup>	Yes	No	Yes	Yes
Temperature Stability	275 F	275 F	200 F	300 F
Return Flow	Excellent	Good	Okay	Excellent
Shale Stability	Excellent	Good	Okay	Excellent
Other Chemicals <sup>(5)</sup>	None Required	None Required	Multiple	None Required
Truckload Lead Time	Immediate	60 days	Immediate	Immediate

(1) Dose at 67+ percent drag reduction; (2) Instantaneous drag reduction 40% better than standard FR's at one-third the dosage; (3) 100% for guar as reference value; (4) Including salts, acids, bases, crosslinker, shale stabilizers, etc.- excellent for coil; (5) Any breaker except sodium bromate.

9391 Grogans Mill Road, Suite A-1  
The Woodlands, TX 77380



(281) 419-9047 office  
(281) 362-5612 fax

## SPE LEADERSHIP ACADEMY

### Inspiring Your Path to Success

If you are like most early career professionals, you know that the technical skills that got you the job aren't the same skills you need to move up. The SPE Leadership Academy is the only nontechnical skills development course designed to reflect the actual E&P work setting. The curriculum enables you to learn the skills and work values needed to advance your leadership development.

For more information, visit [www.spe.org/training/courses/sla](http://www.spe.org/training/courses/sla).

Register Now  
Space is Limited!

2-4 December 2014  
0800-1700

One Westchase Center  
10777 Westheimer Road  
Suite 1075  
Houston, TX 77042

[spehou@spe.org](mailto:spehou@spe.org)

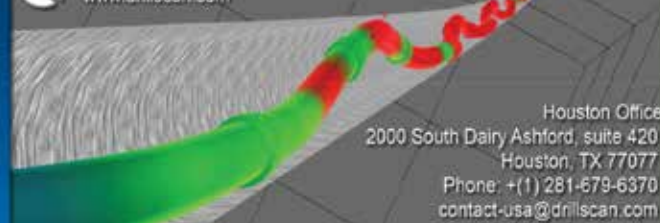
Tel. +1.713.779.9595

Tel. +1.877.750.2773  
(877.750.2SPE)  
toll-free in the  
USA and Canada



Society of Petroleum Engineers

## Advanced Drilling Mechanics Solutions



Houston Office  
2000 South Dairy Ashford, suite 420  
Houston, TX 77077  
Phone: +1) 281-679-6370  
[contact-usa@drillscan.com](mailto:contact-usa@drillscan.com)

Software, Expertise, Services, Training

Global  
Hydraulic  
Fracturing  
Expertise

281-630-4643

[www.elyfrac.com](http://www.elyfrac.com)

WESTSIDE

# Refracturing Horizontal Shales – Recapturing Bypassed Pay

Multi-stage horizontal well stimulation treatments have been the key completion approach that has driven the recent US shale revolution. This approach has transformed the industry, making it possible to economically stimulate reservoirs that were previously deemed uneconomic. In attempting to deploy such multi-stage fracturing treatments, several tools and processes have been employed during the completion phase. Most popular among these approaches has been the ‘plug and perf’ technique, which permits multiple treatments to be performed along a horizontal wellbore. This widespread approach has allowed these operations to be rapidly executed, but with the short elapsed time between stages and wells, it has become increasingly challenging for the completion engineer to effectively close the evaluation cycle.

As many of these plays have now become mature, it has become increasingly apparent that the majority of these wells have not been effectively stimulated. With fracture interference and cluster efficiency being among the key concerns with these types of treatments, high efficiency is rarely being achieved, along with only partial zonal coverage. In fulfilling the intent to complete these wells in the timeliest manner possible, there is likely a significant portion of unstimulated pay in a typical well. This presentation will not attempt to address the “optimized completion design” itself, but will instead explore techniques that can be used to recomplete some of these wells and recapture a portion of the previously bypassed pay.

## JAMES RODGERSON



James Rodgeron is a senior technical specialist in fracturing and stimulation completions in BP’s global wells organization. He has more than 30 years of experience in stimulation and more than 20 years of experience in horizontal completions. James started in the oilfield over 32 years ago with BJ Services and has been with BP since 2012. He has served in multiple engineering roles throughout his career, from field operations to region engineer, to R&D. James has a BS degree from the Texas A&M College of Engineering in Industrial Distribution.



### EVENT INFO

*Wednesday*  
**12.17.14**

11:30 AM TO 1:00 PM

### SPEAKER

James Rodgeron  
Sr. Technical Specialist  
Fracturing & Stimulation  
BP America

### LOCATION

Norris Center – Westchase  
9990 Richmond Ave., Ste. 102  
Houston, TX 77042

### EVENT CONTACT

Sandeep Pedam  
713-591-5738  
sandeep.pedam  
@conocophillips.com

### MEMBERS

\$40

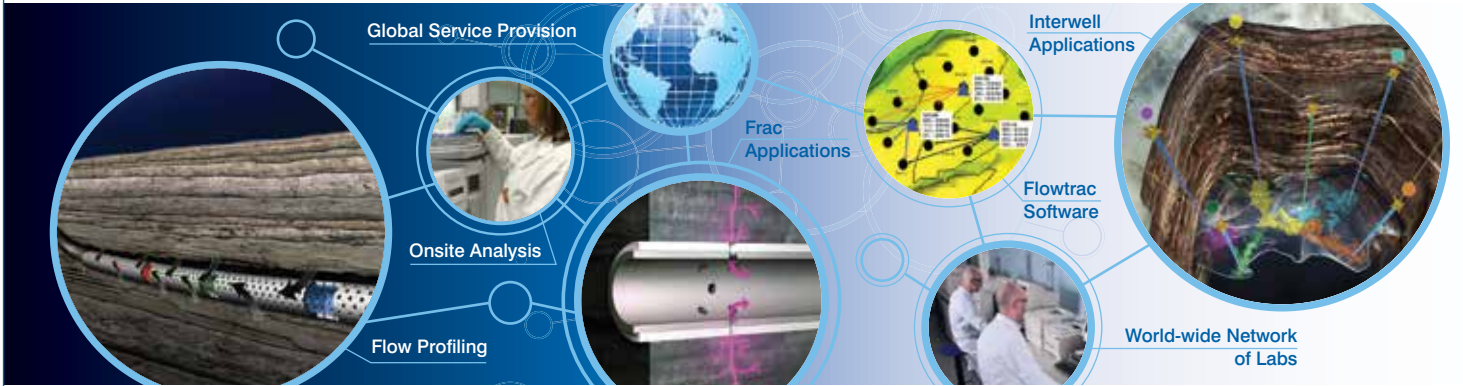
### NON-MEMBERS

\$45



Providing Insight Onsite

# Know Production. No Surprises.



## Reservoir Characterisation Using Tracer Technology

- Expertise in waterflood, injection gas, CO<sub>2</sub> and EOR chemical tracer applications
- Long term wellbore fluid inflow characterisation using no wires, fibres or well intervention
- Unconventional stage production measurement using Tracerco patented technology
- Global network of laboratories and operational capabilities providing local service provision to key oil and gas regions

Tracerco, 4106 New West Drive, Pasadena TX 77507 USA  
 Tel: +1 281 291 7769 Toll Free: 1 800 288 8970

[www.tracerco.com/reservoir-characterisation](http://www.tracerco.com/reservoir-characterisation)



## CORROSION-RESISTANT COMPOSITE PIPELINE SOLUTIONS

Flexpipe Systems' composite linepipe products are flexible, reliable and customizable. We are the answer to your next pipeline project.

ENERGY SERVICES • GLOBAL SOLUTIONS

A SHAWCOR COMPANY  
flexpipesystems.com

## DIRECTIONAL AND HORIZONTAL DRILLING SPECIALISTS

WWW.NOVADIRECTIONAL.COM

## Cardno PPI SEMS Compliance Services

- > Consultants and Clerks
- > Customized Documents
- > Software Solutions

920 Memorial City Way, Suite 900, Houston, TX 77024  
 Phone 713 464 2200 Email [usoilandgas@cardno.com](mailto:usoilandgas@cardno.com)  
[www.cardnoppi.com](http://www.cardnoppi.com)



## Volunteering at the Beacon

Please join SPE-GCS Young Professionals in their support of The Beacon, a nonprofit organization helping the poor and homeless populations of the Houston area. Since opening in 2007, the Beacon has grown from serving 80 clients per day to serving 600-800 clients daily in four core programs: The Beacon Day Center, Cathedral Clinic at The Beacon, Brigid's Hope at The Beacon, and Cathedral Justice Project at The Beacon. These four programs come together under one roof to provide meals, showers, laundry service, case management, medical and psychiatric care, pro bono legal services and pastoral care.

More than 85% of the services of The Beacon are operated by volunteers. On December 7th, it will be the SPE-GCS Young Professionals that answer the call to service. Please come and bring friends or family.

### EVENT INFO

SUNDAY

12.07

10:45 AM  
TO 2:00 PM

### LOCATION

The Beacon  
John S. Dunn Outreach Center  
1212 Prairie Street  
Houston, Texas 77002

### EVENT CONTACTS

Catalina Leal  
Catalina.Leal@bakerhughes.com

Leonard Johnson  
Leonard.Johnson  
@swiftenergy.com

Akhan Mukhanov  
AMukhanov@slb.com.

**TO LEARN MORE**  
beaconhomeless.org

## Auxiliary

### EVENT INFO

FRIDAY

12.12

### LOCATION

Fleming's Restaurant, Town and Country  
788 W. Sam Houston Pkwy. North  
Houston, TX 77024  
713-827-1120

### PROGRAM

Beautiful Christmas Harp Music  
Door Prizes and Raffle

### EVENT CONTACT

Evelyn Earlougher  
281-419-1328  
earlougher@comcast.net

## SPE Student Chapters

## The 2015 Student Summit:

Presented by the University of Texas, Texas A&M, and University of Oklahoma SPE Student Chapters

The SPE Student Chapters at the University of Texas, Texas A&M University, and the University of Oklahoma will be cohosting the fourth annual Student Summit for petroleum engineering students. The 2015 Student Summit will be held in Oklahoma City, Oklahoma from February 4-6. The three-day conference will gather 250 students from the United States and abroad. Lectures, panel sessions, exhibitions, and networking activities will enhance students' technical and soft skills, promoting greater interaction among students and the industry and strengthening SPE student chapters.

This year's theme for the conference is "From Wellhead to the World: Petroleum's Global Impact". Over 45 experts from industry and academia will address the notion that while petroleum is a local commodity, the innovations and resources created by exploration and production have a global impact. The 2015 keynote speakers, Allen Sinor, Baker Hughes VP of Global Accounts, and Tony Vaughn, Devon Energy VP of Exploration and Production, will be discussing their views and opinions on the current and future development of the petroleum industry with students.

For more information about the summit, please visit us at [2015StudentSummit.com](http://2015StudentSummit.com). If your company is interested in participating, please contact [mark.mcginley@pe.tamu.edu](mailto:mark.mcginley@pe.tamu.edu) for questions. Sponsorship opportunities are still available.

### EVENT INFO

WEDNESDAY-FRIDAY

2.04-2.06

### SPEAKERS

Allen Sinor  
VP of Global Accounts  
Baker Hughes

Tony Vaughn  
VP of Exploration & Production  
Devon Energy

### LOCATION

Devon Energy Center

### EVENT CONTACT

Mark McGinley  
[mark.mcginley@pe.tamu.edu](mailto:mark.mcginley@pe.tamu.edu)

### MEMBERS

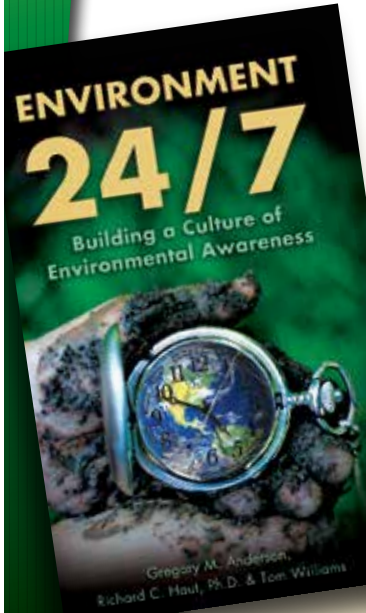
\$60

# ORDER TODAY!

## ENVIRONMENT 24/7

Building a Culture of Environmental Awareness

by Gregory M. Anderson,  
Richard C. Haut, PHD and  
Tom Williams



Learn more and  
order your copy  
today!



[www.environment247.org](http://www.environment247.org)

# SUBJECT MATTER EXPERTS

DESIGN  
ANALYSIS  
TESTING

**STRESS  
ENGINEERING  
SERVICES INC.**

281.955.2900  
[www.stress.com](http://www.stress.com)

HOUSTON • CINCINNATI • NEW ORLEANS • BATON ROUGE • CALGARY

# PRODUCTIONER

USED BY EVERYONE,  
FROM THE FIELD PUMPER

ALL THE WAY UP TO MANAGEMENT

What our customers are saying:  
"Productioner is a great data repository  
and analysis tool. Data entered in the field is  
immediately available to corporate office."

- FEATURES**
- FIELD DATA CAPTURE
  - ALLOCATIONS
  - REPORTS & GRAPHS
  - CUSTOMIZABLE TEMPLATES
  - FULLY MANAGED SERVICE

Mi4 Corporation  
Ph: (713) 401-9584  
[sales@productioner.com](mailto:sales@productioner.com)  
[www.productioner.com](http://www.productioner.com)



24/7 SUPPORT HOTLINE (866) 421-6665

## Reservoir to Refinery.

Innovative solutions  
for the life of your well.

- Resin Coated Proppants
- Performance Additives
- Production Chemicals

E-mail us at [oilfield@momentive.com](mailto:oilfield@momentive.com).

**MOMENTIVE**

# VIKING ENGINEERING, L.C.

- PETROLEUM CONSULTING
- HPHT WELL DESIGN
- APB ANALYSIS
- PROJECT MANAGEMENT
- FAILURE ANALYSIS
- TRAINING

CRITICAL  
WELL ENGINEERING  
CONSULTING SERVICES

VIKING'S TEAM OF HIGHLY TRAINED  
PETROLEUM PROFESSIONALS  
LEND THEIR EXPERIENCE TO  
CREATIVE WELL DESIGNS.

WE CAN HELP PLAN AND  
EXECUTE YOUR TOUGH WELLS.

VISIT OUR WEBSITE: [WWW.VIKINGENG.NET](http://WWW.VIKINGENG.NET)  
OR CALL: (281) 870-8455 IN HOUSTON

# 2015-2016 SPE-GCS Scholarship

Available to students who maintain a GPA of 3.0 or higher and are majoring in petroleum engineering, geology, or related discipline. Note: non-petroleum engineer or geology majors who complete an internship with a company in the Oil & Gas industry are also eligible.

## Requirements:

- Currently reside in Houston OR 29-county Gulf Coast area
- Enroll in an engineering or science program at a university in the Fall
- Currently be a high school senior
- Minimum SAT score of 1650
- Be a U. S. citizen
- Completely fill out the scholarship form and turn in by deadline
- High school transcripts
- Activities, awards and honors
- SAT and/or ACT score
- Professional Reference letters
- Financial need (if applicable, not required)
- Short essay (approx. 500 words)

## Process:

- Scholarship committee reviews each application
- Selected applicants are interviewed in the second round (04.15)
- After the interviews, the scholarship committee meets and collectively decides the 2015-16 scholarship recipients (05.15)



## DETAILS

Renewable yearly scholarship (\$2,000/semester, \$4,000/academic year) up to 4 years

### DEADLINE

02.13.15

### APPLICATION & QUESTIONS

[gcs-scholarship@spemail.org](mailto:gcs-scholarship@spemail.org)

### INSTRUCTIONS

<http://spegcs.org/scholarshipapplication-instructions>

### NOTE

Each 2015-16 first-time scholarship recipient may be eligible for a summer internship with an oil & gas company depending on availability.

# SPE-GCS 1st Annual Scholarship Fundraising Texas Hold 'Em Poker Tournament

## SAVE THE DATE 2015

SATURDAY

**3.28**

5:30 PM

### PLACE

HESS Club  
5430 Westheimer Rd  
Houston, TX 77056

### SPONSORSHIP OPPORTUNITIES:

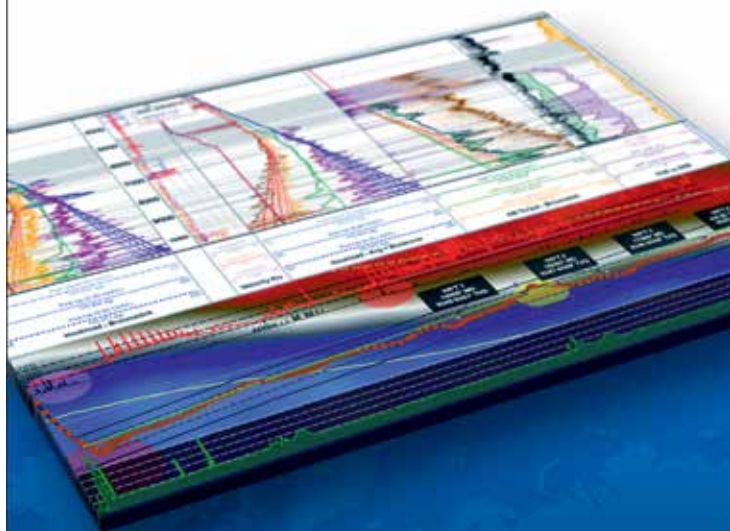
- Diamond Scholarship Sponsors \$5,000
- Platinum Scholarship Sponsors \$2,500
- Gold Scholarship Sponsors \$1,000
- Silver Scholarship Sponsors \$500

### EVENT CONTACT

Akhan Mukhanov  
(832)341-3733  
[akhan.mukhanov@gmail.com](mailto:akhan.mukhanov@gmail.com)



# Exceptional Solutions, Unconventional World.



Integrate. Collaborate. Consolidate.

[sales@petrolink.com](mailto:sales@petrolink.com)

[www.petrolink.com](http://www.petrolink.com)



# maxoil

PROCESS SOLUTIONS

MAXIMIZING PERFORMANCE THROUGH  
OPERATIONAL EXCELLENCE

- OPERATIONS ASSURANCE
- SUBSEA PRODUCTION REALIZATION
- FLOW ASSURANCE
- SEPARATION SYSTEMS
- GAS TREATMENT & TRANSPORT
- PRODUCED WATER MANAGEMENT
- SAND & SOLIDS MANAGEMENT
- CONTAMINANTS MANAGEMENT
- CHEMICAL MANAGEMENT
- PROCESS/PRODUCTION OPTIMIZATION
- PROCESS TROUBLESHOOTING
- OPERATIONS PERFORMANCE STRATEGY (OPS)
- SYSTEMS AWARENESS TECHNICAL TRAINING

WE ARE DEDICATED TO  
DELIVERING STRATEGIC  
VALUE FOR OUR CLIENTS.

Our highly skilled technical team understand the changing and challenging needs of the oil and gas industry and the importance of objective, innovative and cost effective solutions.

contact@maxoilsolutions.com • [www.maxoilsolutions.com](http://www.maxoilsolutions.com)  
ABERDEEN • LONDON • HOUSTON • STAVANGER • KUALA LUMPUR • PERTH

Why can Weatherford deliver more real time data at the wellsite than any other mudlogging company?

Tim has cabin fever.



Our Global Operations Manager for Surface Logging Systems, Tim, is all smiles these days. That's because he and his team recently designed a new state-of-the-art mudlogging cabin. The spacious interior makes room for more laboratory services at the wellsite. Now exploration companies have access to more data in real time, so they can make better decisions faster. It's one more way Weatherford Mudlogging is committed to Excellence from the Ground Up.

**EXCELLENCE  
FROM THE  
GROUND UP™**

**SURFACE LOGGING SYSTEMS**

[www.weatherford.com/surfacelogging](http://www.weatherford.com/surfacelogging)  
[mudlogging.services@weatherford.com](mailto:mudlogging.services@weatherford.com)



## Deepwater Drilling Training

**John Shaughnessy – SPE – Drilling Engr – presents learnings from 36 years of experience: equipment, procedures, potential problems. Classes -**

**Deepwater Drilling: 5 days**

**Accelerated Deepwater Drilling: 2 Days**

**HTHP Drilling: 3 Days**

**Basic Drilling: 1 Day**

**Customized and In-House Classes Available**

For info visit [shaughnessydrillingtraining.com](http://shaughnessydrillingtraining.com) or e-mail [johnshaughnessy@sbcglobal.net](mailto:johnshaughnessy@sbcglobal.net)

## Dyna-Drill

Manufacturers of  
Drilling Motor Components

- Mud Motor Power Sections (Sizes: 2 7/8" to 11 1/2")
- Matrix-3® Coated Bearings
- Coil Tubing Power Sections (Sizes: 1 11/16" to 3 3/4")
- Precision Machining

[www.dyna-drill.com](http://www.dyna-drill.com)

Power That Lasts™



## Ethics Seminar

The Society of Petroleum Engineers Gulf Coast Section will present a continuing education seminar, which will discuss ethics. This 1-hour seminar will qualify attendees for their annual ethics training requirement by the Texas Board of Professional Engineers.

Texas Board of Professional Engineers – Licensing Process/Ethics Covers the licensing requirements and applications process, as well as rule and legislative changes that affect the profession, and board issues/actions.

**VALARICA OLFERS** is an Investigator IV with the Compliance & Enforcement Department, Texas Board of Professional Engineers. She has over 16 years of experience as an investigator with the State of Texas; nine of those years are with the Board. As an investigator, she ensures that the TBPE Act and statute are being followed. She receives and reviews complaints filed with the Board regarding any violation of the rules and/or statute. Val served on active duty in the United States Air Force from 1980-1984. She has a Bachelor of Science Degree in Management-Human Resources from Park University, Austin, Texas.

### EVENT INFO

WEDNESDAY

**12.17**

11:30 AM - 12:30 PM

#### SPEAKER

Valarica Olfers  
Investigator IV  
Texas Board of Professional Engineers

#### LOCATION

SPE Houston Training Center  
10777 Westheimer, Suite 1075  
Houston, Texas 77042

#### EVENT CONTACT

Patty Davis  
patty.davis@petroskills.com

#### MEMBERS & NON-MEMBERS

\$40

### SAVE THE DATE

## Petro Challenge

SPE is kicking off a new annual scholarship fundraiser called the Petro Challenge, which features a fun-filled day of play using the OilSim software program graciously shared with SPE for this event by Schlumberger. Mark your calendars for April 10, 2015! We are seeking at least 8 teams of 4 participants for the event, so if you are interested in playing or sponsoring, please contact Kristi or Lindsey at 281-453-6037 to secure your spot! More information to come soon!

The OilSim upstream learning simulator takes users through the entire exploration and production business process – from acquiring a block through its development, production and abandonment. In this innovative and interactive training method, participants are divided into teams and challenge each other to achieve the best results based on strategy selection and decision making in a simulated business environment.

### EVENT INFO

FRIDAY

**4.10.15**

ALL DAY

#### EVENT CONTACT

Kristin Obenhaus and Lindsey Ferrell  
281-453-6037  
kobehaus@frontline-group.com

# SAFETHERM

INSULATING PACKER FLUID

## Combat heat loss where it counts

SAFETHERM<sup>†</sup> aqueous-base or water-miscible insulating packer fluid system is designed to minimize convective and conductive heat loss to assure flow in deepwater and other low temperature environments. The system is proven to control annular pressure build up and maximize produced fluid quality.

An operator in West Africa used SAFETHERM insulating packer fluid to slow the cooling of stationary crude in the production line. As a result they successfully tested four deepwater wells with zero installation problems or QHSE incidents.



[miswaco.com/completions](http://miswaco.com/completions)

**Mi SWACO**  
A Schlumberger Company

<sup>†</sup> Mark of M-I LLC

## Delivering Award-Winning, Technology-Driven Engineered Solutions to the Oil & Gas Industry



### World-Class Completions & Production Solutions

- Completion Fluids Products/Services
- Well Testing Equipment/Services
- Fluids Management



© 2014 TETRA and the TETRA logo are registered trademarks of TETRA Technologies, Inc. All rights reserved.

[tetratec.com](http://tetratec.com)

## Are documentation challenges biting you?

### Contact us about:

- ✓ Technical Writing
- ✓ Data Book Compilation
- ✓ Project Management
- ✓ Printing and Binding



281-298-1878

[www.zaetric.com](http://www.zaetric.com)

**ZAETRIC**<sup>®</sup>

## Reaching Deeper

With the largest fleet of deep, high-pressure coiled tubing, coupled with basin-specific expertise

## Going Further

To find solutions to our customers' wellsite challenges, safely and efficiently

## That's the IPS Advantage



Integrated Production Services

[www.ipsadvantage.com](http://www.ipsadvantage.com)

# EVENT RECAP

The SPE-Gulf Coast Section and the SWE-HA Section hosted a joint membership networking event called “Wear Something Pink” on Thursday, October 9th, 2014, at the Downtown Club at Houston Center. The purpose of the event was to promote membership growth and retention through networking. Food and beverage included hors d’oeuvres and wine tasting. The event theme of “Wear Something Pink” is in honor of Breast Cancer Awareness Month. Proceeds collected from registration fees will be donated to the Rose, a local breast cancer center in the Greater Houston Area. About 65 people were in attendance at the event. Thanks to our Event Sponsors, FUGRO and ASME, for making this a successful event!



Volunteers at registration table  
(Kathy MacLennan and Austin Gardner)



Group Photo of SPE-GCS and SWE-HA members



Ladies wearing something pink. Featuring Jennifer Palladina (on far left)



Membership Committee Members: Julia Clarke (also SWE-HA President) and Gary Reznicek



SPE-GCS YP Committee Members: Glenn Harris (on far left), Nii Nunoo (middle), and Fabian Vera (on the right)



SWE-HA Members



Door Prize Winners



Mikhail Alekseenko (SPE-GCS YP Rough Camp Chair, on far left), Xuan VandeBerg (SPE-GCS Membership Chair), Sergey Busygin (SPE-GCS YP Membership Program Coordinator)



[www.intertek.com](http://www.intertek.com)



**Upstream Services**

6700 Portwest Drive | Houston, TX 77024  
 713.479.8400  
[westportservices@intertek.com](mailto:westportservices@intertek.com)

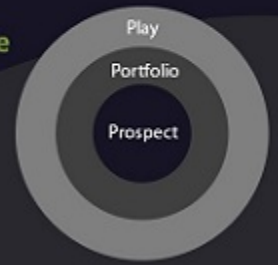
**Rose & Associates**

Courses Consulting Software

**Unconventional Resource Valuation and Assessment Course**  
 (3 to 5 days)

**UCRA Software**  
 To model, value and risk drilling in resource plays

[www.roseassoc.com](http://www.roseassoc.com)



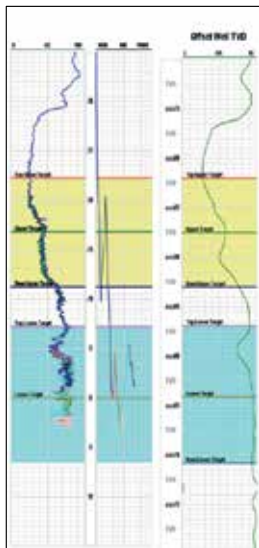
**Innovative Custom-Engineered Drilling and Completion Solutions**

Liner Hanger Systems  
 Expandable Systems  
 Completion Systems  
 Safety and Kelly Valves  
 Window Cutting Products  
 Rental Tools



*Serving the Oil and Gas Industry Since 1917*

Tel: 713-729-2110 Fax: 713-728-4767 [www.tiwttools.com](http://www.tiwttools.com)



**Geosteering Services**

Highly qualified personnel with 20+ years DD & LWD experience

24/7 Real-time monitoring or reports from LAS files

Proprietary software

**Geosteering Software**

TST interpretation for GR only measurements

Image displays / interpretation of azimuthal GR, resistivity or density measurements

Resistivity modelling / interpretation for LWD propagation resistivity

Software sales, training and technical support

[info@geosteering.com](mailto:info@geosteering.com)

Call 281 573 0500





# EVENT RECAP

Thanks to the Permian Basin Study Group & Community Service Group for providing photos of their latest events. We'd like to feature more photos from our section events and luncheons in the Connect. If your committee or study group has photos from your recent events, luncheons, dinners or conferences, please send the original high-resolution file to the Connect editor at [editor@spegcs.org](mailto:editor@spegcs.org).



# SPE GULF COAST SECTION DIRECTORY

YOUR GUIDE TO YOUR ORGANIZATION LEADERS

## Gulf Coast Section Officers – 2014-2015

### CHAIR

Jeanne Perdue, Occidental  
713-215-7348  
jeanne\_perdue@oxy.com

### VICE CHAIR

Ivor Ellul, RPS Knowledge Reservoir  
713-595-5100  
iellul@knowledge-reservoir.com

### SECRETARY

Sunil Lakshminarayanan, Occidental  
713-344-1249  
sunil.lakshminarayanan@gmail.com

### TREASURER

Lucy King, Miller & Lents  
713-308-0343  
lking@millerandlents.com

### VICE TREASURER

Alex McCoy, Occidental  
713-366-5653  
alexander\_mccoy@oxy.com

### CAREER MANAGEMENT

Patty Davis, PetroSkills  
832-426-1203  
patty.davis@petroskills.com

### COMMUNICATIONS

Subash Kannan, Anadarko  
832-636-7679  
subash.kannan@anadarko.com

### COMMUNITY SERVICES

Amy Timmons, Weatherford  
713-836-6563  
amy.timmons@weatherford.com

### EDUCATION

Gabrielle Guerre, Ryder Scott  
713-750-5491  
gabrielle\_guerre@ryderscott.com

### MEMBERSHIP

Xuan VandeBerg  
832-444-5143  
stem.fields@gmail.com

### PAST CHAIR

Mike Strathman, Trinity Group  
713-614-6227  
mike-strathman@att.net

### PROGRAMS

David Tumino, Murphy Oil  
281-717-5123  
tuminospe@hal-pc.org

### SOCIAL ACTIVITIES

Jim Sheridan, Baker Hughes  
281-432-9209  
jim.sheridan@bakerhughes.com

### TECHNOLOGY TRANSFER

Carol Piovesan, APO Offshore  
281-282-9291  
cpiovesan@apooftshore.com

### YOUNG PROFESSIONALS

Pavitra Timbalia, ExxonMobil  
832-624-0505  
pavitra.a.timbalia@exxonmobil.com

### DIRECTORS 2013-15

Trey Shaffer, ERM  
832-209-8790  
trey.shaffer@erm.com

John Lee, Univ. of Houston  
713-743-4877  
wjlee3@uh.edu

Deepak Gala, Shell  
281-544-2181  
deepak.gala@shell.com

### DIRECTORS 2014-16

Jenny Cronlund, BP Exploration  
281-366-8966  
jenny.cronlund@bp.com

Torrance Haggerty, Battelle Memorial Inst.  
713-260-9640  
haggertyt@battelle.org

Eric Kocian, ExxonMobil  
832-624-7962  
eric.m.kocian@exxonmobil.com

## SPE GULF COAST NORTH AMERICA REGIONAL DIRECTOR

Bryant Mueller, Halliburton  
281-818-5522  
bryant.mueller@halliburton.com

## Committee Chairs

### AWARDS

Jeremy Viscomi,  
Petroleum Technology Transfer Council  
785-864-7396  
jviscomi@pttc.org

### CONTINUING EDUCATION

Nii Ahele Nunoo, NOV  
507-304 5416  
Nii.Nunoo@nov.com

### ESP WORKSHOP

Noel Putscher, Newfield  
281-674-2871  
nputscher@newfield.com

### GOLF CO-CHAIRS

Cameron Conway, KB Machine  
281-217-0660  
cconway@kb-machine.com

Robin Smith, Insight Investments  
713-907-1694  
rsmith@insightinvestments.com

### INTERNSHIPS

Gabrielle Guerre, Ryder Scott  
713-750-5491  
gabrielle\_guerre@ryderscott.com

### NEWSLETTER

John Jackson, Unimin Energy  
832-247-0233  
jsjackson@unimin.com

### SCHOLARSHIP

Tanhee Galindo  
832-823-1511  
gcs-scholarship@spemail.org

### SPORTING CLAYS

Paul Conover, NOV  
713-346-7482  
paul.conover@natoil.com

### TENNIS

James Jackson, Halliburton  
713-366-5704  
james.jackson@halliburton.com

---

**WEB TECHNOLOGY**

Shivkumar Patil, Aker Solutions  
713-369-5352  
Shivkumar.Patil@akersolutions.com

---

**SECTION MANAGER**

Kathy MacLennan, SPE-GCS  
713-779-9595 x 813  
kmaclennan@spe.org

---

**Study Group Chairs****BUSINESS DEVELOPMENT**

Ricardo Concha, Credit Suisse  
713-890-1400  
ricardo.concha@credit-suisse.com

---

**COMPLETIONS & PRODUCTION**

Mark Chapman, CARBO Ceramics  
281-921-6522  
mark.chapman@carboceramics.com

---

**DIGITAL ENERGY**

Rick Morneau, Morneau Consulting  
281-315-9395  
RickMorneau@outlook.com

---

**DRILLING**

Ernie Prochaska, NOV Downhole  
832-714-3842  
ernie.prochaska@nov.com

---

**GENERAL MEETING**

Raja Chakraborty, Shell  
281-544-2148  
Raja.Chakraborty@shell.com

---

**HEALTH, SAFETY, SECURITY,  
ENVIRONMENT AND  
SOCIAL RESPONSIBILITY**

Trey Shaffer, ERM  
832-209-8790  
trey.shaffer@erm.com

---

**INTERNATIONAL**

Owen Jones, ExxonMobil  
Development Company  
832-624-2019  
owen.jones@exxonmobil.com

---

**NORTHSIDE**

Robert Estes, Baker Hughes  
713-879-4414  
robert.estes@bakerhughes.com

---

**PERMIAN BASIN**

Amy Timmons, Weatherford  
713-836-6563  
amy.timmons@weatherford.com

---

**PETRO-TECH**

Jessica Morgan, Blackstone Minerals  
713-929-1633  
jmorgan@blackstoneminerals.com

---

**PROJECTS, FACILITIES,  
CONSTRUCTION**

Chris Shaw, Shell  
281-544-6796  
C.Shaw@shell.com

---

**RESEARCH & DEVELOPMENT**

Skip Davis, Technology Intermediaries  
281-359-8556  
skdavis@technologyintermediaries.com

---

**RESERVOIR**

Rafael Barroeta, Occidental  
713-366-5356  
rafael\_barreta@oxy.com

---

**WATER & WASTE  
MANAGEMENT**

Kira Jones, Consultant  
kirarjones@gmail.com

---

**WESTSIDE**

Sandeep Pedam, ConocoPhillips  
(832) 486-2315  
sandeep.pedam@conocophillips.com

---

# CONNECT INFORMATION

**NEWSLETTER COMMITTEE**

**CHAIRMAN | John Jackson**  
editor@spegcs.org

**AD SALES | Pat Stone**  
starlite1@sbcglobal.net

**BOARD LIAISON | Subash Kannan**

**NEWSLETTER DESIGN | DesignGood Studio**  
designgoodstudio.com

**SPE HOUSTON OFFICE**

**GULF COAST SECTION MANAGER**  
Kathy MacLennan | kmaclennan@spe.org

**GCS ADMINISTRATIVE ASSISTANT**  
Sharon Harris | sharris@spe.org

**HOURS & LOCATION**

10777 Westheimer Road, Suite 1075  
Houston, Texas 77042  
P 713-779-9595 | F 713-779-4216  
Monday - Friday 8:30 a.m. to 5:00 p.m.

**PHOTO SUBMISSIONS**

We are looking for member photos to feature on the cover of upcoming issues! Photos must be at least 9" by 12" at 300 DPI. Email your high resolution picture submissions to: editor@spegcs.org

**CHANGE OF ADDRESS**

To report a change of address contact:  
Society of Petroleum Engineers  
Member Services Dept.  
P.O. Box 833836  
Richardson, Texas 75083-3836  
1.800.456.6863 | service@spe.org

**CONTACT**

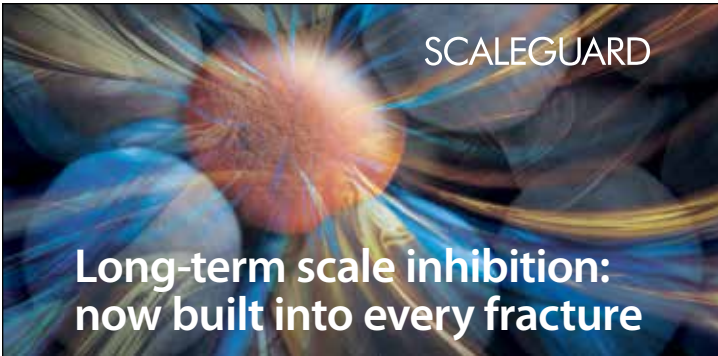
For comments, contributions, or delivery problems, contact editor@spegcs.org.

---

## ADVERTISE YOUR BUSINESS IN THE SPE-GCS NEWSLETTER OR ON THE SPE-GCS WEBSITE

*Connect* is printed 12 times per year and contains premium positions for advertisers wanting to reach some of the most influential oil & gas professionals in the world. We are now selling ads for the 2014-2015 program year, and our ad sizes have been updated. Please visit the SPEGCS website for more information regarding ad pricing and specifications.

**For information on advertising in this newsletter or on the SPE-GCS website, please contact:  
Pat Stone, Star-Lite Printing, Inc  
281-530-9711 / starlite1@sbcglobal.net**



SCALEGUARD

## Long-term scale inhibition: now built into every fracture

### SCALEGUARD proppant-delivered scale inhibition

SCALEGUARD® technology is an encapsulated ceramic proppant infused with scale-inhibiting chemicals to maintain optimum production and recovery rates from scale-prone wells, while reducing well costs and chemical usage.

SCALEGUARD technology features an engineered internal porosity and can be blended with any product from our high quality proppant portfolio, without compromising the high conductivity of the proppant pack. Scale-inhibiting chemicals infused within the proppant are released into the fracture only on contact with water to deliver highly efficient production assurance.

Now long-term scale prevention is available throughout your entire production system from a single, simple treatment while you frac.

[carboceramics.com/scaleguard](http://carboceramics.com/scaleguard)

**CARBO**

Production. Enhanced.



### SOCIETY OF PETROLEUM ENGINEERS GULF COAST SECTION

10777 Westheimer Road  
Suite 1075  
Houston, TX 77042

NON-PROFIT  
ORGANIZATION  
U.S. POSTAGE  
PAID  
PERMIT NO. 6476  
HOUSTON, TX

**12.2014**

# CALENDAR

SUNDAY	MONDAY	TUESDAY	WEDNESDAY	THURSDAY	FRIDAY	SATURDAY
		Reservoir	Business Development	Drilling	Research & Development	
	<b>1</b>	<b>2</b>	<b>3</b>	<b>4</b>	<b>5</b>	<b>6</b>
YP - Volunteering at the Beacon		General Meeting Northside YP Networking Event	International		Auxiliary	
<b>7</b>	<b>8</b>	<b>9</b>	<b>10</b>	<b>11</b>	<b>12</b>	<b>13</b>
			Westside Career Management Ethics Seminar	Board of Directors		
<b>14</b>	<b>15</b>	<b>16</b>	<b>17</b>	<b>18</b>	<b>19</b>	<b>20</b>
<b>21</b>	<b>22</b>	<b>23</b>	<b>24</b>	<b>25</b>	<b>26</b>	<b>26</b>
<b>28</b>	<b>29</b>	<b>30</b>	<b>31</b>			