



Gulf Coast Section

SEPTEMBER
2014

CONNECT

SPE GULF COAST SECTION NEWSLETTER

THE BOOM: WHAT I LEARNED FROM A DECADE COVERING FRACKING FOR THE WALL STREET JOURNAL

GENERAL MEETING P. 15

PETRO-TECHS, WHO WE ARE AND WHAT WE DO FOR YOU

PETRO-TECH P. 13

ENERVEST – THE PATH FORWARD

BUSINESS DEVELOPMENT P. 19

REDEFINE THE OPERATING WINDOW; HOW TO PROACTIVELY DESIGN FOR MECHANICAL WELLBORE STRENGTHENING

PERMIAN BASIN P. 17

SPE-GCS 31ST ANNUAL TENNIS TOURNAMENT

P. 23

CHAIR'S CORNER



JEANNE PERDUE
2014-2015 SPE-GCS Chair

Back in the early days of civilization, being a leader meant being tall and having a loud voice. That way, people could see you, hear you, and follow you easily.

Leadership today also involves being seen and heard; however, with so much technology at our fingertips, the focus is more on the quality of what is seen and heard before the decision is made to follow – or not. Your image, your facial expressions and body language, your tone of voice and word choice, and the frequency and consistency of being seen and heard all contribute to others' perceptions of you as a leader. These are “soft skills” that are not explicitly taught in any of the courses in the petroleum engineering degree curriculum. You have to learn these on your own.

When we did our Member Survey earlier this year, there were many suggestions for Soft Skills Workshops about leadership, coaching, mentoring, and social skills. Our Continuing Education Committee is planning several of these in upcoming months. Also, SPE International is going to pilot a new 3-day Leadership Academy for Young Professionals Dec. 2-4 at the SPE Houston Office training room. The catchy tagline is: “Your technical skills got you through the door. Your interpersonal skills will get you up the ladder.”

SPE has a myriad of opportunities to take on leadership positions and learn leadership skills firsthand. Consider serving as a Gulf Coast Section volunteer for on-the-job leadership training.

One of the leadership quotes I especially like is the following from John C. Maxwell, leadership coach, pastor, and author of more than 60 books on the subject: “A leader is one who knows the way, goes the way, and shows the way.” This means a leader has to have some knowledge about the terrain, take action, and coach and mentor others along the route.

“A leader is one who knows the way, goes the way, and shows the way, and shows the way.”

About 20 years ago, I had the opportunity to participate in a Leadership 20/20 program. During the opening weekend retreat, two dozen of us did a “ropes course,” which involved trusting your teammates while you tackled various obstacles. One of the challenges was to climb a telephone pole (which had metal foot rungs

all the way up), stand on top of said telephone pole (which is only 6 inches in diameter), and spring off to catch a trapeze several feet away. Of course, they had you all trussed up with ropes and pulleys and two teammates holding separate lines to catch you should you fall.

Now, I want you to know that I have this “thing” about heights. I’m OK in an airplane, but you won’t catch me anywhere near the windows at the Petroleum Club! I didn’t think I’d be able to get to the top of that telephone pole, especially since I froze halfway up a farm silo that

I tried to climb when I was 8 years old. Why? My little brother said “Don’t look down,” so I looked down. It took four people a half hour to talk me down from that silo.

Well, after watching several Leadership 20/20 team members climb up and fall and not get hurt because of the ropes, I mustered up the courage and determination to try it.



I did not look down; I kept my eyes on the top. When I neared the top, I ran out of rungs for my hands, whereas my feet still had a few more to go. So I held on to the ropes, got one foot on the top of that pole and lurched forward. I bruised my hand on the trapeze, but I missed and fell, the ropes catching me nicely.

One of my teammates took a photo of me at the top of that telephone pole, and to this day, whenever I am facing some daunting task, I can tell myself: “Jeanne Marie, you have stood on the top of a telephone pole; surely you can do this.”

To lead the huge Gulf Coast Section and accomplish our goals, I have to trust and rely on my “ropes,” those teammates who take their responsibility seriously, who hold their lines firmly, but with a little slack.

Will you be one of my ropes? Call me, email me, I’ll find a leadership role for you. Together, we will celebrate amazing achievements!

Love, Jeanne



Cover photograph
Tim Davis. Taken in the
Haynesville Shale.

CONTENTS

STUDY GROUPS

- 9** **Research & Development**
09.04.2014
Innovation with a Purpose

- 11** **Northside**
09.09.2014
Considerations for Infill Well Development in Low Permeability Reservoirs

- 13** **Petro-Tech**
09.09.2014
Petro-Techs, Who We Are and What We Do For You

- 14** **Drilling**
09.10.2014
Little Things Have Big Effects - Drilling Vibrations - From Source to Remediation

- 15** **General Meeting**
09.11.2014
The Boom: What I Learned From A Decade Covering Fracking for the Wall Street Journal

- 17** **Permian Basin**
09.15.2014
Redefine the Operating Window: How to Proactively Design for Mechanical Wellbore Strengthening

- 18** **Westside**
09.17.2014
A New Generation of Efficient Fracturing Fluids for High Total Dissolved Solids Applications



- 19** **Business Development**
09.24.2014
EnerVest - The Path Forward

- 20** **Completions & Production**
09.24.2014
Propped Height Validation in Liquids-Rich Organic Shales Using Recovery Factor Analysis

- 21** **Reservoir**
09.25.2014
Quasiglobal Multiphase Upscaling of Reservoir Models With Nonlocal Stratigraphic Heterogeneities

- COMMITTEES**
- 25** **Young Professionals Social Networking**
09.11.2014
Auxiliary Kick-Off Luncheon for 2014-2015
09.12.2014

- 29** **Membership Committee Networking Event**
10.09.2014

IN EVERY ISSUE

- 5** **SPE-GCS July Membership Report**

Spotlight
Lindsey Newsome

- 6** **Then & Now**
Buddy Woodroof

- 34** **SPE-GCS Directory**

- MORE**
- 31** **SPE Overview of Subsea Well Abandonment Training Course**
09.22.2014

- 33** **SPE Subsea Well Abandonment Workshop**
09.23.2014 - 09.24.2014

BOARD OF DIRECTORS MEETING

THURSDAY SEPTEMBER 11TH / 7:30 AM TO 10:30 AM

Location **SPE HOUSTON OFFICE**

10777 Westheimer Rd., Suite 1075 , Houston, TX 77042

Event Contact **SHARON HARRIS**

713-457-6821 EXT. 821 / 713-779-4216 FAX / sharris@spe.org



Trust your ride?

one reliable solution. Entero[®] MOSAIC[™]

With over ten years of continuous progress and innovation for corporate reserves and evaluations, Mosaic has the product stability and client responsiveness that E&P companies have come to expect. Discover what it's like to have a system and team you can depend on to achieve your end goal.

- Better Productivity
- Higher Efficiency
- Faster Speed
- Trusted Information

Expect More. Accomplish More. Learn More at www.entero.com/mosaic

entero[®]
energy software

SPE-GCS MEMBERSHIP REPORT July 2014

July 2014 | **June 2014**
 TOTAL: 15,361 | TOTAL: 14,798
 YP: 3,386 | YP: 3,208



MEET OUR NEW WEBMASTER

LINDSEY NEWSOME

JULY			JUNE	
SPE-GCS MEMBERS	TOTAL	YP	TOTAL	YP
New Members	130	63	60	26
Transferred to Section	4	1	4	1
Unpaid	3,159	1,214	3,146	1,203

STUDENT MEMBERS			PAID		UNPAID	
	PAID	UNPAID	PAID	UNPAID	PAID	UNPAID
Texas A&M	737	212	734	214		
Rice	40	24	38	25		
HCC	51	20	50	20		
UH	312	175	306	177		
Total	1,140	431	1,128	436		

Total Paid/Unpaid		16,501	3,590	15,726	3,582
% Paid		82.1%		81.6%	

P

lease welcome our new webmaster, Lindsey Newsome, who has been contracted to improve the Gulf Coast Section's website and send out our e-newsletter and email blasts to study groups.

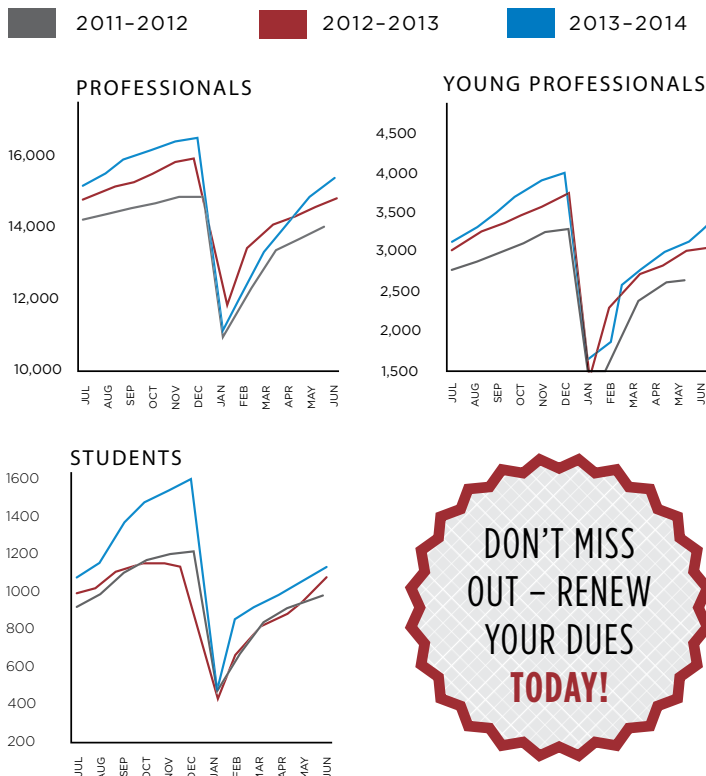
A graduate of Texas A&M with a degree in speech communication, Lindsey has served as website manager for Gurwitsch products and marketing communications manager for MicroSeismic. She is a whiz at email marketing and promotions, an expert at web page design and functionality, and passionate about using metrics to evaluate website effectiveness.

For example, at MicroSeismic Lindsey adjusted the website content such that page views increased by 27%, new visitors increased by 10%, and overall site visits increased 22% in just a few months! She is also good at producing, editing and launching online webinars and created a YouTube channel to expand brand awareness.

One of the things Lindsey is going to help us with is creating online tutorials on how to upload your study group event info on our website. We expect to see our Google Analytics reports rising off the charts due to Lindsey's efforts to improve our website!

Lindsey will be working from home, where she has a darling little girl, age 1. For fun, she likes to bake, swim, and travel.

If you ever have any website questions or want something uploaded to it, please feel free to contact Lindsey at webmaster@spgcs.org.



**DON'T MISS
OUT - RENEW
YOUR DUES
TODAY!**

Reservoir to Refinery.
 Innovative solutions for the life of your well.

- Resin Coated Proppants
- Performance Additives
- Production Chemicals

E-mail us at oilfield@momentive.com. **MOMENTIVE**

THEN & NOW

COLUMN BY BUDDY WOODROOF

SEPTEMBER
1964

The nation's most unusual and one of its most expensive exploration plays is being quietly explored in downtown LA, as the Los Angeles Basin play is extended from near City Hall almost to Santa Monica.

Atlantic Refining is in the process of setting an Eastern Hemisphere offshore water depth drilling record of 525 ft in the Gulf of Sirte off Libya.

The turbodrill that Dresser Industries designed for ultimate use in Project Mohole will undergo a shakedown test by drilling through a very high compressive strength basalt deposit 10 miles southeast of Uvalde, Texas.

17 new LNG storage caverns are under construction, which will bring the total number of these caverns excavated or leached out of hard rock or salt formations to over 450 in 24 states.

The development of a new directional-drilling tool is announced. This tool from Drilco Oil Tools anchors to one side of the hole and hydraulically bends the drill string in the opposite direction. (Directional drilling...What next?)

**East Texas crude oil - \$3.10/bbl;
U.S. active rig count - 1,530**

SEPTEMBER
1989

For the first time since Baker Hughes began keeping figures by segment, the number of domestic rigs drilling for gas exceeded the number of rigs drilling for oil. (My, how things have changed!)

Sources report that financial compensation for the families of the 167 victims of last year's Piper Alpha North Sea platform explosion and fire is expected to exceed \$157 million.

Meanwhile, Exxon's main contractor on the Exxon Valdez oil spill expects the spill cleanup and related costs to ultimately total as much as \$2 billion, excluding lawsuits.

While BP Canada shops its interest in the Wolf Lake in-situ oil sands project in Alberta, other Canadian and West German firms plan a \$700 million coal liquefaction/heavy oil upgrader project in the same province. (How about the German word for coal liquefaction... kohleverflüssigung!)

**WTI crude oil - \$19.37/bbl;
U.S. active rig count - 936**

SEPTEMBER
2004

The World Bank reports plans to dramatically change its lending practices for developing nations that request loans to expand their oil, gas, and mineral production. They indicate that they will focus more on gas projects and will consider expanding their alternate fuel portfolio to include more solar and wind projects.

The Minerals Management Service plans a workshop to outline an ocean-current monitoring program that will enable operators to curtail drilling operations before currents build to threatening levels.

Hurricane Frances forces nine companies to evacuate 16 platforms and 17 drilling ships in the Gulf of Mexico off New Orleans and Houma, Louisiana, thus shutting in approximately 60,000 BOPD for 5 days.

France reports plans to expand its annual biofuels production capacity to more than 1 billion tons.

**Light sweet crude oil - \$43.38/bbl;
Natural gas - \$4.66/MMbtu;
U.S. active rig count - 1,240**

THE REST OF THE YARN

This month we continue our look back at the life and times of Henry Ford.

H

enry's shining creative soul still surfaced now and then during the 1920's and 30's, most prominently in the mid-20's when he built what was at the time the world's greatest factory, the River Rouge plant, and developed an outstanding new car, the Model A. He allowed his softer side to emerge when he

played with the grandchildren and went camping with his hero Thomas Edison. But most of the time he conducted a grim exercise of power. Two key figures in his terrifying descent were his son Edsel, and a man named Harry Bennett.

Edsel, Henry's only child, became president of Ford Motor Company in 1918 at the age of 25 when Henry decided to simply be owner of the company. Edsel was an exceptionally competent auto executive, trained from birth to know and love cars, but unfortunately for him, he was also a reasonable man who was willing to listen to others' opinions. This attribute was viewed by Henry as a weakness. "The boy is too soft," he said. Henry decided to make Edsel tough by making life tough—a rationalization for letting his ego run amok.

Henry relentlessly badgered and bullied Edsel, spied on him, overturned his decisions, and encouraged other executives to subvert

his authority. Edsel could never work up the relentlessness to snarl back at his father and tell him to back off. He felt instead a profound loyalty to him, saying, "It's his business." The stress and tumult went on year after year, decade after decade, undoubtedly contributing to Edsel's string of health problems, which included serious ulcers. Edsel ultimately died of stomach cancer in 1943 at the age of 49. One author wrote that what Henry did to him was "very close to filicide"—murder of one's child.

Harry Bennett, whom Henry hired as a bodyguard in 1919, was a thug with ties to Detroit's underworld. The two men became buddies, and Bennett rose in the company until he controlled huge sections of it, including hiring and firing. When Henry wanted to humiliate Edsel, but didn't want to do it personally, he would often sic Bennett on him.

Next month, Bennett begins applying his skillset to the management of the company.

THEN & NOW
SEPTEMBER
QUIZ

What gas mixture were subsea divers breathing circa 1964 in order to be able to perform operations in 450 ft water depths?

ANSWER TO MAY'S QUIZ

The formal recognition of the art of drilling (or earth boring) in the United States, insofar as the Patent Office is concerned, involved two handwritten patents issued to Levi Disbrow, a New Yorker of all things, which were issued in 1825 and 1830, respectively.

May's winner will be announced in the October issue.

If you would like to participate in this month's quiz, e-mail your answer to contest@spe.org by noon, September 15. The winner, who will be chosen randomly from all correct answers, will receive a \$50 gift card to a nice restaurant.

Reaching Deeper
With the largest fleet of deep, high-pressure coiled tubing, coupled with basin-specific expertise

Going Further
To find solutions to our customers' wellsite challenges, safely and efficiently

That's the IPS Advantage 

Integrated Production Services www.ipsadvantage.com



BroadBand Sequence

FRACTURING TECHNIQUE



Composite fluid temporarily isolates fractures at the wellbore.

BroadBand Sequence technique stimulates more clusters (blue) than conventional stimulation techniques.



Marathon Oil increases productivity in Eagle Ford Shale well by 21%.

The BroadBand Sequence* fracturing technique effectively stimulated perforation clusters that would not have produced by conventional techniques. Enabled by a proprietary engineered composite fluid of degradable particles and fibers, the BroadBand Sequence technique increased production by 21% over 115 days.

Read the case study at slb.com/BroadBand

Schlumberger

Resume Production



You planned for this.

You have the experience and expertise of the global leader in wellbore intervention on speed dial to solve problems so production can resume.

Call us or visit BakerHughes.com/GOM today for peace of mind tomorrow.



RESEARCH & DEVELOPMENT

Innovation with a Purpose

Dr. Ruscev will share his perspectives on the important role that a Research and Development Organization has on enabling a company to achieve its stated purpose. He will also describe how the purpose of Baker Hughes motivates R&D personnel, guides the project selection process, and accelerates the development of innovative solutions to the challenges facing the industry. His talk will be followed by a dynamic question and answer session.

MARIO RUSCEV



Mario Ruscev is Chief Technology Officer of Baker Hughes Incorporated. Dr. Ruscev has more than three decades of technology and operations experience in the oilfield services industry. He joined Baker Hughes from leading Russian seismic company Geotech Seismic Services, where he served as Chief Executive Officer. He previously served as Chief Executive

Officer of FormFactor, a semiconductor testing equipment manufacturer that uses nanotechnology, and spent more than two decades with Schlumberger in a number of senior roles in France, the United Kingdom and Norway.

Early in his career, Dr. Ruscev formed a research team that developed imaging systems such as container imaging into gaseous sensors that provided images of container contents. This led to the development of the airport luggage screening system that remains in use today. He has led a number of teams whose work has significantly advanced the success of wireline logging tools, seismic resolution and measurement capabilities, and underground water management and carbon sequestration. Dr. Ruscev earned his doctorate in nuclear physics from the Pierre and Marie Curie University in Paris and his Ph.D. in nuclear physics from Yale University, and is a Director of the Global Carbon Capture and Storage Institute.



EVENT INFO

Thursday
09.04.14

11:30 AM TO 1:00 PM

SPEAKER

Mario Ruscev
Chief Technology Officer
Baker Hughes Incorporated

LOCATION

Norris Conference Center
Westchase
9990 Richmond Avenue
Suite 102
Houston TX 77042

EVENT CONTACT

Skip Davis
281-359-8556
skdavis@
technologyintermediaries.com

MEMBERS

\$35

NON-MEMBERS

\$40

Slider
Automated Directional Drilling

IMPROVE YOUR HORIZONTALS

- ON-BOTTOM TOOL FACE ORIENTATION
- INCREASED MOTOR LIFE
- INCREASED ROP & HORIZONTAL REACH CAPABILITY
- ELIMINATES ORIENTATION TIME LOSSES

slb.com/Slider

PHDWIN™

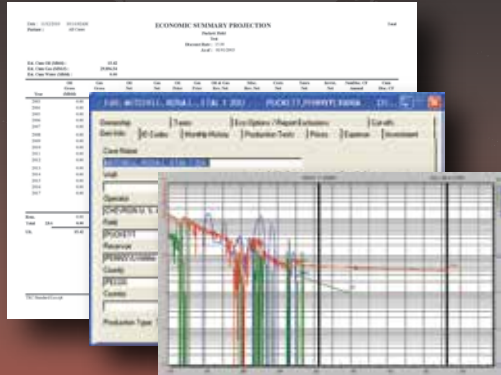
Integrated Economics & Decline Curve Analysis

NOW EVEN MORE POWERFUL WITH

PHDRMS™

Reserves Management System

The *complete solution* for evaluating, managing, and reporting reserves and performance data.



Schedule an **online** presentation **TODAY!**

TRC Consultants, LC 888-248-8062 www.phdwin.com

SIGNA ENGINEERING CORP.



Managed Pressure Drilling School

Once per Quarter
Every Year

- Petroleum Engineering
- MPD, MudCap and UnderBalanced Drilling
- Well Construction
- Project Management
- Field Execution
- Custom Software Design
- Custom Training

2 Northpoint Dr., Ste. 700
Houston, TX 77060
281.774.1000

Experience **Signature Performance**

www.signa.net



The advertisement shows a man in profile looking at a computer monitor. The monitor displays various data points and graphs. A large green circular graphic with a grid and numbers is overlaid on the background. A green banner across the middle contains the text 'no longer flying under the radar'. At the bottom right, there is a green box with the Precision logo and contact information.

no longer flying under the radar

Precision
Directional Services
precisiondrilling.com/directional

NORTHSIDE

Considerations for Infill Well Development in Low Permeability Reservoirs

As low permeability reservoir development matures in the US, operators are now contending with the issue of field development. Specifically, optimal well spacing and timing of infill drilling must be addressed. This is largely driven by the matrix perm and extent of the effective hydraulic fracture area. The structural setting largely dictates the dimensions of the hydraulic fracture system, both in height growth and lateral complexity. But depletion from parent wells can impact the dimensions of both the created frac system as well as the productive frac system on infill wells. Thus geologic structure and depletion need to be taken into account to determine not only where to place infill wells, but as importantly, when to place infill wells. Examples from the Bakken and Woodford Shales will be shown to demonstrate the workflow required to answer these field development questions.

GEORGE WATERS



George Waters is the Technical Manager of Unconventional Completions for Schlumberger. He has 29 years of hydraulic fracturing experience, including 14 years of stimulating organic shales. He is currently engaged in the evaluation and completion of organic shales outside of North America, having worked on shales in over 20 countries. He received a BS in Petroleum Engineering from

West Virginia University, an MS in Environmental Engineering from Oklahoma State University, and an MS in Petroleum Engineering from Institut Francais du Petrole. He was an SPE Distinguished Lecturer on Organic Shale Completions during the 2009 -2010 season.

Deepwater Drilling Training

John Shaughnessy – SPE – Drilling Engr – presents learnings from 36 years of experience: equipment, procedures, potential problems. Classes -

Deepwater Drilling: 5 days

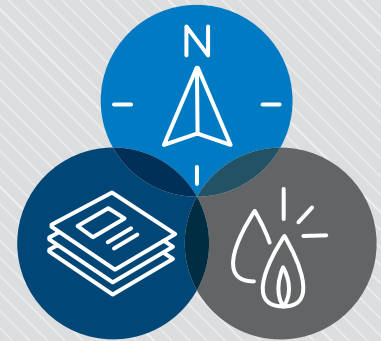
Accelerated Deepwater Drilling: 2 Days

HTHP Drilling: 3 Days

Basic Drilling: 1 Day

Customized and In-House Classes Available

For info visit shaughnessydrillingtraining.com or e-mail johnshaughnessy@sbcglobal.net



EVENT INFO

Tuesday

09.09.14

12:00 PM TO 1:00 PM

SPEAKER

George Waters
Technical Manager of
Unconventional Completions
Schlumberger

LOCATION

Greenspoint Club
16925 Northchase Dr.
Houston, Texas 77060

EVENT CONTACT

Sumitra Mukhopadhyay
281-784-5742
smukhopadhyay
@superiorenergy.com

MEMBERS

\$35

NON-MEMBERS

\$40

CoolSet™

Curable Resin-Coated Proppant

Prevent proppant flowback without activator

CoolSet proppant – frac fluid and breaker friendly – is your no-activator, low-temperature solution to enhance conductivity and increase hydrocarbon production.

Get more from your wells at Santrol.com/CoolSet



SANTROL
A Fairmount Minerals Company

For direct technical data
CoolSet Product Director
Taso Melisaris
713.234.5450 x 42271
Technology@FMSand.com




Still GROWING...
and revolutionizing Downhole Video Diagnostic services

See what others can only imagine! Experience reality with our patented LiteSabre® diffused lighting and up to 1000 lumens in an OptiGel™ clear window strategically displaced to the problem area downhole.

- E-line Down and Side View Video Surveillance
- 16 Hours of Slickline or CT-Deployed Memory Video
- 30 frames P/S, High-Definition Color Video Recording
- Shallow Work Video

Bringing new technology to the challenges of downhole image capture.

 **Abrado Wellbore Services**

www.abrado-intl.com
Email us at: info@abrado-intl.com



 **TOP-CO**

www.top-co.ca
1.832.300.3660

topcosales@top-co.ca

Fit-for-Purpose Casing, Cementing, and Completion Solutions

Ask our Petroleum Engineers how we can help you :

- Reach TD
- Achieve Zonal Isolation
- Ensure Wellbore Integrity

PETRO-TECH

Who We Are, and What We Do For You

We will present an overview of what the Petro-Tech Study Group has historically been, where we are now, and future plans. The 2014-2015 events will be unveiled, and new ideas will be presented for discussion and feedback. Please join us and learn what we have in store, as well as provide your ideas and feedback to help shape our group to better fit everyone's needs.

JESSICA MORGAN

Jessica is the 2014-2015 Chair of the Petro-Tech Study Group, having been with the board since 2011. She has facilitated the SPE-GCS salary survey for the last three years. Jessica has twelve years of experience in the industry, moving from admin to tech to technologist in quick succession. She has extensive experience in data analysis, reserves reporting, database administration, corporate compliance and reporting, and software development/troubleshooting.

Jessica has been a member of SPE for five years and has been employed at Black Stone Minerals as a Senior Engineering Technologist for the last four years.

DIRECTIONAL
AND
HORIZONTAL
DRILLING
SPECIALISTS



WWW.NOVADIRECTIONAL.COM

Integrated Energy Services, Inc.

Robert Barba
Petrophysicist

Log Analysis
Completion Optimization

500 N. Capital of TX Hwy
Building 4-150
Austin, TX 78746
C: (713) 823-8602
F: (713) 583-9400
RBarba75@gmail.com

www.integrated-energy-services.com



EVENT INFO

Tuesday

09.09.14

11:30 AM TO 12:30 PM

SPEAKER

Jessica Morgan
Chair, SPE GCS Petro-Tech
Study Group
Black Stone Minerals

LOCATION

Sheraton Houston
Brookhollow Hotel
3000 North Loop W
Houston TX 77092

EVENT CONTACT

Jessica Morgan
713-929-1633
jmorgan
@blackstoneminerals.com

MEMBERS

\$38 Pre-Registered
\$48 Walk-Ins

NON-MEMBERS

\$48



EVENT INFO

Wednesday
9.10.14

11:30 AM TO 1:00 PM

SPEAKER

Graham Mensa-Wilmot
Sr. Advisor, Drilling Engineering
Chevron

LOCATION

Greenspoint Club, Oak Room
16925 Northchase Dr.
Houston, Texas 77060

EVENT CONTACT

Tom Wick
713.806.2631
tom.wick@nov.com

MEMBERS

\$35

NON-MEMBERS

\$40

DRILLING

Little Things Have Big Effects - Drilling Vibrations - From Source to Remediation

Drilling vibrations continue to have drastic negative effects on operational success and project costs. In all instances, and as a requirement to facilitate development of appropriate solutions, sources of vibrations must always be identified. Vibrations mode identification, while important, has less significance in comparison to vibrations source identification. Source identification improves efficiency of remediation strategies.

The discussion will show why severe vibrations, which could not be resolved with the known remediation strategies, including bit selection, BHA modeling, drilling parameter changes, persisted over several different projects. Specifically, it will be shown that the dynamic conditions always worsened when the known strategies were executed, even when the specific vibrations modes were claimed to have been identified with downhole measurements.

Most importantly, the presentation will also show how re-focusing on the problems resulted in the identification of a new vibrations source. This was aided by extensive analysis of worn downhole tools and their failure patterns. The simplicity (little things) in the solution developed to address this new vibrations source, and the huge impact (big effects) the solutions continue to have on project success and cost savings in challenging environments will be presented.

GRAHAM MENSA-WILMOT

Graham Mensa-Wilmot is a Sr. Advisor, Drilling Engineering in Chevron's Energy Technology Company. Graham is the MAXDRILL (Performance Drilling) project leader. He has more than 28 years of experience in drilling applications research, downhole tool development, drilling vibrations identification and remediation, drilling dynamics, and drilling performance improvement. He has authored 41 technical papers and also holds 26 patents on the same disciplines.

Graham is a recognized industry leader on performance drilling, and serves on the SPE/IADC Drilling Conference Program Committee, and the SPE Drilling and Completions technical review committee. He previously served on the JPT Editorial committee, and was also a distinguished lecturer for the Petroleum Network Educational Courses series. He holds an MS degree in Drilling Engineering from Romania's University of Petroleum and Gas in Ploiesti.

PROFESSIONAL REGISTRATION REVIEW COURSES FOR PETROLEUM ENGINEERING

The courses cover the topics on the Texas State Board Petroleum Engineering Professional Examination.

HOUSTON COURSES:
(8:00 AM - 5:00 PM)

I SEPTEMBER 18 thru 22, 2014
II October 6 thru 10, 2014

P: 405-822-6761 | E: bingwines@cox.net
winrockengineeringinc.com

GENERAL MEETING

The Boom: What I Learned From A Decade Covering Fracking for the *Wall Street Journal*

Russell Gold, a brilliant and dogged investigative reporter at *The Wall Street Journal*, has spent more than a decade reporting on one of the biggest stories of our time: the spectacular, world-changing rise of “fracking.”

Mr. Gold will share the untold stories of the rise of this technology and insights from the frontlines of the “fracking” debate. It is a story with an incredible cast of tycoons and geologists, dreamers and drillers, speculators and skeptics; a story that answers a critical question of our time: Where will the energy come from to power our world—and what price will we have to pay for it?

“Fracking” has become a divisive political lightning rod. Opponents heap criticisms upon it without offering alternatives. Industry supporters all too often will rush to its defense without acknowledging its shortcomings.

The debate between this once obscure oilfield technology’s vociferous critics and fervent defenders has obscured the actual story: “Fracking” has become a fixture of the American landscape and the global economy. It has upended the business models of energy companies around the globe, and it has started to change geopolitics and global energy markets in profound ways.

RUSSELL GOLD



Russell Gold is an award-winning investigative journalist at *The Wall Street Journal*. His book, *The Boom: How Fracking Ignited the American Energy Revolution and Changed the World*, was published in April 2014.

He started his journalism career at the *Philadelphia Inquirer* and the *San Antonio Express-News*. In 2000, he joined *The Wall Street Journal* and covered Texas and economics, before switching to energy in 2002.

His reporting has taken him to five continents and above the Arctic Circle two times.

In 2010, he was part of the *Wall Street Journal* team that covered the Deepwater Horizon explosion and oil spill. *The Journal’s work* was awarded the Gerald Loeb Award for best business story of the year and was a finalist for the Pulitzer Prize in National Reporting.

He earned a B.A. in History from Columbia University in 1993. He lives in Austin with his wife and two children.

Copies of Mr. Gold’s book will be available for purchase at the meeting.

CEMLab—Cement Lab Data Management Software

- Web-based
- Test results
- Slurry design
- Search

Pegasus Vertex, Inc.
(713)981-5558 | sales@pvsoftware.com



EVENT INFO

Thursday
09.11.14

11:30 AM TO 1:00 PM

SPEAKER

Russell Gold
Senior Energy Reporter
The Wall Street Journal

LOCATION

Petroleum Club of Houston
800 Bell St.
Downtown Houston

EVENT CONTACT

Barry Faulkner
281-627-8790
barryfaulkner@earthlink.net

MEMBERS

\$35

NON-MEMBERS

\$40

STUDENTS

\$10

CORROSION-RESISTANT COMPOSITE PIPELINE SOLUTIONS



Flexpipe Systems' composite linepipe products are flexible, reliable and customizable. We are the answer to your next pipeline project.



flexpipesystems.com

WELLSITE GEOSCIENCE SERVICES



When time is money, Wellsite Geoscience is money well spent.

Whether you're exploring a basin, producing a well or completing a shale play, time is money. That's why Weatherford Laboratories brings a suite of formation evaluation technologies right to the wellsite. Utilizing mud gas and cuttings, these technologies provide detailed data on gas composition, organic richness, mineralogy and chemostratigraphy in near real time. As a result, operators now have an invaluable tool to assist with sweet spot identification, wellbore positioning, completion design and hydraulic fracturing. We call it Science At the Wellsite. You'll call it money well spent.

SCIENCE AT THE WELLSITE™
www.weatherfordlabs.com

Formation Evaluation | Well Construction | Completion | Production



©2013 Weatherford. All rights reserved.

PATENTED proNova™ by TDE

DRILLING PERFORMANCE

CREW PERFORMANCE MEASUREMENTS

AUTOMATIC OPERATIONS DETECTION

INVISIBLE LOST TIME DETECTION

281.755.7595
www.pronova-tde.com

PRODUCTIONER

USED BY EVERYONE, FROM THE FIELD PUMPERS ALL THE WAY UP TO MANAGEMENT

What our customers are saying:
"Productioner is a great data repository and analysis tool. Data entered in the field is immediately available to corporate office."

- FEATURES**
- FIELD DATA CAPTURE
 - ALLOCATIONS
 - REPORTS & GRAPHS
 - CUSTOMIZABLE TEMPLATES
 - FULLY MANAGED SERVICE



Mi4 Corporation
Ph: (713) 401-9584
sales@productioner.com
www.productioner.com



24/7 SUPPORT HOTLINE (866) 421-6665

PERMIAN BASIN

Redefine the Operating Window: How to Proactively Design for Mechanical Wellbore Strengthening

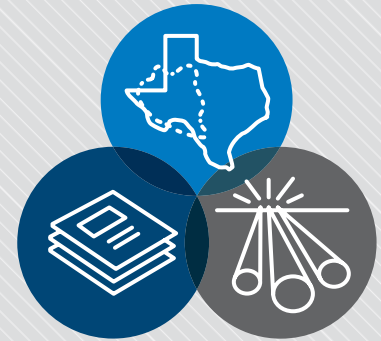
Casing while Drilling (drilling with casing or liner) is an enabling method that is believed to increase stability and fracture gradient in narrow pore-fracture pressure sedimentary basins and deep offshore applications (plastering effect). Although successful field applications of increasing wellbore integrity have been reported, uncertainties remain regarding the mechanisms and how to operationally capture the maximum attainable wellbore pressure. These uncertainties include the hydraulic complexities of fluids, role of Particle Size Distribution (PSD) and how it relates to the plastering effect, type of drilling fluids, borehole shape, role of lost circulation materials (LCM), variation of drilling parameters, and casing eccentricity. This presentation provides a proactive plastering effect design solution to decrease the interference of several unknowns.

MOJI KARIMI



Moji Karimi is Weatherford's North America Drilling-with-Casing (DwC™) Product Line Champion. Prior to joining Weatherford, Moji worked as Casing-Drilling Research Engineer at TESCO. Mr. Karimi is considered a subject matter expert in wellbore-strengthening applications that use casing while drilling technology. He has authored and coauthored more than 20 technical papers on various drilling subjects and holds two pending patent applications on Integrated

Wellbore Strengthening and Managed Pressure Wellbore Strengthening. Moji serves on several industry committees such as AADE Fluids Management Group and the IADC lead team tasked with writing the 12th edition of the IADC Drilling Manual. Mr. Karimi received the 2013 SPE Gulf Coast Regional Young Member Outstanding Service Award. He holds a Master of Science degree in Petroleum Engineering from University of Louisiana at Lafayette and Bachelor of Science degree in Drilling Engineering from University of Petroleum Technology.



EVENT INFO

Tuesday
09.15.14

11:30 AM TO 1:00 PM

SPEAKER

Moji Karimi
North America
Drilling-with-Casing
Product Line Champion
Weatherford

LOCATION

Norris Conference Center
Westchase
9990 Richmond Avenue
Suite 102
Houston TX 77042

EVENT CONTACT

Amy Timmons
713-836-6563
Amy.Timmons@Weatherford.com

MEMBERS

\$35 Pre-Registered
\$40 Walk-Ins

NON-MEMBERS

\$40 Pre-Registered
\$45 Walk-Ins

Rose & Associates
Courses Consulting Software

Unconventional Resource Valuation and Assessment Course
(3 to 5 days)

UCRA Software
To model, value and risk drilling in resource plays
www.roseassoc.com



EVENT INFO

Wednesday
09.17.14

11:30 AM TO 1:00 PM

SPEAKER

Gabriel Monreal
Principal Chemist
FTS International

LOCATION

Norris Conference Center
Westchase
9990 Richmond Avenue
Suite 102
Houston TX 77042

EVENT CONTACT

Sandeep Pedam
832-486-2315
sandeep.pedam
@conocophillips.com

MEMBERS

\$40

NON-MEMBERS

\$45

WESTSIDE

A New Generation of Efficient Fracturing Fluids for High Total Dissolved Solids Applications

As the stimulation of unconventional resources expands, a need has arisen for alternative fracturing fluids that offer advantages over traditional guar-based systems, particularly with regard to proppant pack cleanup and minimization of formation damage. Key parameters that would make a fluid system a preferable option over guar include the reduction of polymer necessary to achieve desired fluid stability, as well as the ability to viscosify diversified water sources, including produced water. Low-pH fracturing fluid systems which utilize a low residue polymer as the gelling agent have been developed to meet this need.

These new fluid systems are designed to accommodate hybrid fracturing designs, and to viscosify the variety of source waters employed in many locations. A linear gelling agent is utilized that provides rapid hydration rates in waters containing up to 110,000 mg/l total dissolved solids (TDS). Rapid hydration for the linear system occurs at a pH range of 5 to 11, eliminating the necessity for hydration buffers. The cross-linked system offers effective fluid stability at pH 5 with a temperature range of 125° to 250 °F, polymer loadings as low as 12 lbm/Mgal, and stability in produced waters containing 110,000 mg/l TDS. Linear gel systems offer hydration rates of less than 3 minutes at 40°F in 2% KCl brine. This minimizes the volume of fresh water required while maintaining the necessary frac fluid parameters. This presentation will discuss the technical and operational advantages of these fluid systems versus guar in various water sources, including produced water mixtures. The impact on productivity and formation compatibility relative to currently used fluid systems will also be covered.

GABRIEL MONREAL

Mr. Gabriel Monreal is a principal chemist in the Fluid Chemistry Laboratory Section of FTS International's Corporate Technology Center in Houston. Since joining FTS International in 2012, Mr. Monreal has worked on the development of new fracturing fluid systems and additives for use in unconventional reservoirs. His primary research focus is the development of efficient fracturing fluid systems that are suitable for use in produced and flowback water sources. Before joining FTS International, Mr. Monreal worked downstream as a refinery chemist for NuStar Energy, L.P., as well as an R&D chemist in hydraulic fracturing technologies and water treatment for Weatherford International Ltd. He holds a B.S. degree in chemistry from Baylor University and an M.S. in chemistry from Texas State University.

Advanced Drilling Mechanics Solutions

DrillScan
www.drillscan.com

Houston Office
2000 South Dairy Ashford, suite 420
Houston, TX 77077
Phone: +(1) 281-679-6370
contact-usa@drillscan.com

Software, Expertise, Services, Training

BUSINESS DEVELOPMENT

EnerVest - The Path Forward

Join us at the Four Seasons Hotel as EnerVest's Phil DeLozier presents an in-depth review of recent EnerVest activities to build their portfolio, their future A&D outlook, and the relationship between the various EnerVest entities.

The past 5 years have seen a steady flow of acquisitions for EnerVest, averaging over \$1B/yr. EnerVest added to its already formidable position in Barnett, while expanding operations in the Anadarko, San Juan and Uinta Basins. 2013 also saw divestitures in Permian and a partial sale/JV formation with FourPoint in western Oklahoma. EnerVest is also a leading producer in Ohio, where it has extensive land holdings in the Utica and an active JV with Chesapeake/Total. What is EnerVest targeting in 2014? Has it been sitting on the sidelines waiting for gas prices to subside from their peaks during our recent "ice age"? Will we see the formation of more JV relationships with non-operating parties? Are there any recent developments with their extensive Utica position?

Please join us for this informative discussion. The popular format of a Business & Social Networking hour, with complimentary hors d'oeuvres and a cash bar, followed by an hour and a half long program including a Q&A session, will begin at 5:00 pm in the Mezzanine.

PHIL DELOZIER



Phil DeLozier is Executive VP, Business Development of EnerVest, Ltd. Before joining EnerVest in 2006, he served as VP - Business Development of EOG Resources, Inc. Prior to his employment with EOG, DeLozier was Manager - BD of Tenneco Ventures Corp., VP - Land & Acquisitions of McCormick Resources, Inc. and held various leadership positions at Tenneco from 1979 to 1996. He served from 2007 to 2013 as Houston Regional Director and as a Board Member of the Independent Petroleum Association of America. In June 2005, he received the IPAA Leadership Award for his industry contributions. Additionally, DeLozier serves on the board of directors of the World Affairs Council of Houston, where he was Chairman in 2007, and the Palmer Drug Abuse Program. He is also an active member of AIPN, AAPL, TIPRO and the Texas Alliance of Energy Producers. DeLozier earned a Bachelor of Arts degree from Oklahoma State University.

Dyna-Drill
Manufacturers of Drilling Motor Components

- Mud Motor Power Sections (Sizes: 2 7/8" to 11 1/2")
- Matrix-3[®] Coated Bearings
- Coil Tubing Power Sections (Sizes: 1 11/16" to 3 3/4")
- Precision Machining

www.dyna-drill.com **Power That Lasts™**



EVENT INFO

Wednesday
09.24.14

5:00 PM TO 7:00 PM

SPEAKER

Phil C. DeLozier
Executive Vice President,
Business Development
EnerVest, Ltd

LOCATION

Four Seasons Hotel
1300 Lamar
Houston, TX 77010

EVENT CONTACT

Matt Bormann
281-345-8019
mbormann@wwtco.com

MEMBERS

\$40 Pre-Registered
\$50 Walk-Ins

NON-MEMBERS

\$45 Pre-Registered
\$50 Walk-Ins



EVENT INFO

Wednesday
09.24.14

11:30 AM TO 1:30 PM

SPEAKER

Robert Barba
President & CEO
Integrated Energy Services

LOCATION

Greenspoint Club
16925 Northchase Drive
Houston, TX 77060

EVENT CONTACT

Jonathan Godwin
281-921-6526
jgodwin@carboceramics.com

MEMBERS & NON-MEMBERS

\$35 Pre-Registered
\$40 Walk-Ins

COMPLETIONS & PRODUCTION

Propped Height Validation in Liquids-Rich Organic Shales Using Recovery Factor Analysis

Well performance evaluation in liquids-rich shales has received a lot of attention in the literature to date. While there are a variety of techniques available to estimate effective fracture lengths and areas, the simplest method so far involves a comparison of volumetric oil in place with estimated ultimate recovery from the wellbore. A hypothesis was proposed in a major West Texas project recently that suggested slickwater fracs were only developing 50 to 60 ft of effective propped height regardless of proppant volume pumped. This limited height was validated in several vertical pilot wells with radioactive proppant tracers. When the trajectory of the lateral was compared to the pilot well net pay distribution, it was observed that the wells that remained in the limited "sweet spot" had significantly higher recovery factors than those that did not. In addition, when a recovery factor analysis was made of the expected propped interval for 120-acre spacing recovery factors, the values were in the 8-10% range. When the analysis was done for the entire 300 ft gross pay column above and below the propped interval, the recovery factors dropped to 1-2%.

ROBERT BARBA

Bob spent 10 years with Schlumberger as an openhole field engineer, sales engineer, and product development manager. Since then he has spent 22 years consulting for over 175 companies on petrophysics and completion optimization. He has focused on the integration of petrophysics with completion designs in a variety of reservoirs in North America, conducting numerous field studies for operators evaluating the apparent frac length in over 2000 wells and providing "best practices" recommendations based on the study results (SPE 90483). He has been responsible for the petrophysical analysis of 40 major fields worldwide as part of integrated reservoir characterization studies identifying remaining mobile hydrocarbons. He has authored 33 technical papers on the integration of petrophysics with completion designs, horizontal wells, and reservoir characterization projects. Bob has a BS from the US Naval Academy and an MBA from the University of Florida. He is also a member of the SPE, SPWLA, and the AAPG.

VIBRATION TECHNOLOGY
LEADING THE INDUSTRY IN STUCK PIPE RECOVERY
INNOVATIVE TECHNOLOGY FOR REMOVING STUCK TUBULARS

+ WORKOVER
+ COMPLETIONS
+ DRILLING



www.layne.com

Vibration Technology

RESERVOIR Quasiglobal Multiphase Upscaling of Reservoir Models With Nonlocal Stratigraphic Heterogeneities

Representing the complete spectrum of fine-scale stratigraphic details in full-field dynamic models of geologically complex clastic reservoirs is beyond the limits of existing computational capabilities. A quasiglobal multiphase upscaling method—the Regional-scale Multiphase Upscaling (RMU) method—is developed, in which the dynamic effects of subgrid-scale (typically subseismic) nonlocal stratigraphic reservoir elements (e.g., channels, lobes, sand bars, and shale drapes) are captured by means of pseudofunctions for flow simulation. Unlike conventional dynamic multiphase upscaling methods, the RMU method does not require fine-resolution reservoir-scale simulations. Rather, it relies on intermediate-scale sector-model simulations for pseudoization. During the pseudoization process, dynamic multiphase flow responses of coarse regional-scale sector models are calibrated against those stemming from their corresponding fine-resolution parent models. Each regional-scale sector model is simulated only once at the fine geologic resolution.

The RMU method is evaluated in two proof-of-concept numerical examples involving a plethora of turbidite stratigraphic architectures. The method yields simulation results that are always more accurate than conventionally upscaled coarse-resolution-model predictions. Incorporating geologically based pseudofunctions into otherwise simple coarse-resolution full-field reservoir models reduces the simulation cycle time significantly and improves the accuracy of production forecasts.

FARUK O. ALPAK



Faruk O. Alpak is a senior research reservoir engineer in the Computation and Modeling Team of Shell International Exploration and Production Inc. He holds a Bachelor's degree in petroleum and natural gas engineering from the Middle East Technical University, Turkey, and Master's and Ph.D degree in petroleum engineering from The University of Texas at Austin. Before joining Shell in 2005,

Alpak worked at the Schlumberger-Doll Research Center as a visiting scientist on mathematical modeling and inversion projects and at The University of Texas at Austin as a research assistant. His specialization areas are reservoir simulation, subsurface thermal-reactive transport, upscaling, inverse problems, and computational electromagnetics. Alpak is an associate editor for the *SPE Journal*. He is the recipient of the SPE Journal Outstanding Associate Editor Award in 2008.



EVENT INFO

Thursday
09.25.14

11:30 AM TO 1:00 PM

SPEAKER

Faruk O. Alpak
Senior Research Reservoir
Engineer
Shell International Exploration
and Production Inc

LOCATION

Sullivan's Steakhouse
4608 Westheimer Rd.
Houston, TX 77027

EVENT CONTACT

Kishor (Kris) Pitta
832-803-8224
Pitta.Kris@gmail.com

MEMBERS

\$35

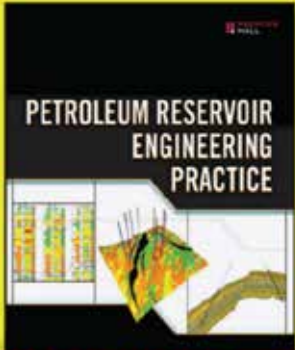
NON-MEMBERS

\$40

The Up-To-Date,
Practical Guide to Modern
Petroleum Reservoir
Engineering by
DR. NNAEMEKA EZEKWE

Available from Amazon.com,
informIT.com, and other
fine resellers.

PETROLEUM RESERVOIR
ENGINEERING
PRACTICE



PRENTICE HALL | informIT.com

An Answer to an Industry Need

ProTechnics

ProTechnics has provided the answer to an industry need.

Q: *How to manage the complexity of today's completions and the increased focus on completion optimization?*

A: *Regionally based multi-disciplined completion diagnostic technical experts.*

The Global Technology Team is a corporate commitment to strategically align ProTechnics' technical experts with client engineering teams.



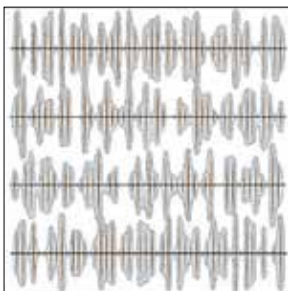
With more than 200 years of engineering experience the GTT's **Regional Engineering Advisors** bring crucial completion, regional play knowledge and expertise throughout all stages of a development project providing:

- **Pre-Job Strategic Design Expertise**
- **Post-Job Analysis & Evaluation**
- **Professional & Comprehensive Reports & Deliverables**
- **Comprehensive Project Wrap-Up Presentations**

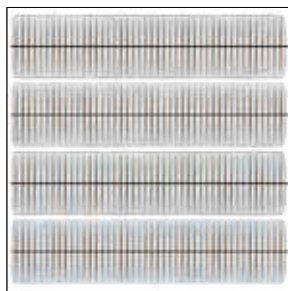
For more information about the Global Technology Team, go to www.corelab.com/protechnics or give us a call at 817-239-0817



The most efficient field frac network starts with predictable frac spacing and predictable frac volume.



Unpredictable



Predictable

Plug-and perf cannot deliver predictable, consistent frac results, and neither can open-hole completions. With Multistage Unlimited single-point injection, fracs initiate right where you plan them and proppant volume in every frac is exactly what you want. The result: an efficient field frac network for maximum reservoir connectivity.



ncfrac.com
+1 281.453.2222
info@ncfrac.com



©2014, NCS Energy Services, LLC. All rights reserved. Multistage Unlimited and "Leave nothing behind." are trademarks of NCS Energy Services, LLC. Patents pending.



Geosteering Solutions

Upstream Solutions That Tackle Your Data-Challenged Well



For more information visit www.petrolink.com/consulting

SPE-GCS 31st Annual Tennis Tournament

The 31st Annual Society of Petroleum Engineers Gulf Coast Section Tennis Tournament will be held on Thursday, November 6th & Friday, November 7th at The Houston Racquet Club located at 10709 Memorial Drive in Houston, Texas. Proceeds from the tournament benefit the SPE-GCS Scholarship Fund. In combination with other section functions, there have been 33 new scholarships for incoming college freshman studying petroleum engineering, math and sciences, and 70 renewed scholarships which include sophomores, juniors and seniors for their continued education in petroleum engineering. More than \$3 million dollars in scholarships have been awarded since 1963 to students through this program.

In 2013, we had a very successful tournament with over 115 players participating. Registrations and sponsorships raised \$55,000 in revenue. After tournament expenses, net proceeds of over \$39,600 dollars were contributed to the SPE-GCS Scholarship Fund.

Sponsors are a welcome and an essential part of making this event a success. All sponsors will be recognized in the tournament program and on the sponsorship billboard that is exhibited throughout the tournament. Please see the Sponsor Form for sponsorship levels. In-kind donations for ditty bags and door prizes are also accepted.

On behalf of the entire 2014 SPE-GCS Tennis Committee, we look forward to seeing everyone for two fun-filled days of tennis!

QUESTIONS

James Jackson
713-702-6795
James.Jackson
@Halliburton.com

LOCATION

The Houston Racquet Club
10709 Memorial Drive
Houston, TX 77024
713-464-4811
houstonracquetclub.com

START TIMES

Mixed Doubles
Begins Thursday
November 6th - 6:00 PM

Tournament Doubles
Begins Friday
November 7th - 9:00 AM

DEADLINE

October 31, 2014
Participation is limited!
Entries accepted on a
first-come, first-served basis.

Thursday / Friday
November 6 - 7

EVENT INFORMATION

There will be two flighted round robin events:
Mixed Doubles - Thursday evening, November 6th
Tournament Doubles - Friday, November 7th

The tournament doubles event is open to men and women and is a combined bracket. Partners may be of the same gender or mixed.

The committee will assist players who do not have a partner for any event.

FLIGHTING

Championship - Advanced Players
A - Regular & Advanced Players
B - Intermediate Players
C - Non-regular Players & Beginners

The SPE-GCS Tennis Committee reserves the right to allocate players to a different flight if necessary. Please rank yourself on the honor system.

WHAT TO EXPECT

Lots of tennis, meeting old friends and making new ones. Door prizes, T-shirts, awards, meals and beverages.

Thursday - Light dinner
Friday - Breakfast, lunch and snacks
Hit & Grab - Friday after lunch
Award presentations, door prizes & heavy appetizers - late Friday afternoon - 4PM

RULES OF ENTRY

The event is open to members, nonmembers, guests, and friends of SPE. The only restriction is that tennis professionals are not allowed.

REGISTRATION

Thursday, November 6th - 4:00 - 6:00 PM
Friday, November 7th - 8:30 - 9:00 AM

IMPORTANT NOTICE

All paid participants must wear their "Name Tags" during this event to have access to the food and drinks

ENTRY FEE INFORMATION

\$125.00 Per person - Fee covers Tournament and Mixed Doubles for an individual player.
\$50.00 for those only playing Mixed Doubles.
\$25.00 - Spouse/Guest (Not Playing)
Fees are due with entry form.

FOR REGISTRATION

www.spegcs.org/committees/tennis/

RPSEA ULTRA-DEEPWATER TECHNOLOGY CONFERENCE

September 3-4, 2014
Norris Conference Centers
Houston, Texas

Technical Presentations on Flow Assurance, Drilling, Cementing, Interventions, Subsea Systems, Dry Tree Structures, Safety, Met-ocean, Reservoirs, Floaters, and Pore Pressure Prediction.

Registration includes continental breakfast, lunch buffet, and a reception on September 3rd.

RPSEA members \$100, non-members \$500. View the full agenda and register at www.rpsea.org/events/453.



RESEARCH PARTNERSHIP TO SECURE ENERGY FOR AMERICA

1650 Highway 6, Suite 325,
Sugar Land, TX 77478
281.313.9555
www.RPSEA.org



PetroSkills®

October & November sessions in Houston



Introductory & Multi-Discipline

- Basic Drilling, Completion, & Workover Operations-BDC, Nov 3-7
- Basic Petroleum Engineering Practices - SE, Nov 17-21
- Basic Petroleum Technology - BPT, Oct 20-24
- Deepwater Drilling and Production Technology - DDt, Oct 7-9
- Overview of the Petroleum Industry - OVI, Oct 6-7

Well Construction / Drilling

- Basic Drilling Technology - BDT, Nov 10-14
- Cementing Practices - Cementing II, Oct 13-17
- Drilling Fluids Technology - DFT, Oct 6-8
- Primary Cementing - Cementing I - PCE, Oct 6-8
- Well Design and Engineering - WDE, Oct 13-14

Production & Completions Engineering

- Completions and Workovers - CAW, Nov 10-14
- Downhole Remediation Practices for Mature Oil & Gas Wells - DRP, Nov 10-14
- Remediation: Causes, Prevention, & Remediation - RD, Nov 17-21
- Production Operations I - POI, Oct 20-24
- Surface Water Management in Unconventional Resource Plays - SWM, Nov 17-19

Reservoir Engineering

- Applied Reservoir Engineering - ARE, Nov 30-21
- Basic Reservoir Engineering - BRE, Oct 6-10
- Chemical Enhanced Oil Recovery Fundamentals-CEORC, Nov 17-21
- History Matching and Reservoir Optimization-HMRO, Nov 10-14
- New Opportunities in Oil Fields - NOF, Oct 6-10
- Reservoir Engineering for Other Disciplines - REO, Oct 13-17

For details on these or our other 250 sessions in the Gulf Coast, contact Patty Davis, (832) 426-1203 or patty.davis@petroskills.com, or see details and full selection at www.petroskills.com



MELTDOWN?

Melted ice cream can ruin a day. You expected a frozen confection; instead you got a drippy mess. Extruded polymer components can ruin more than a day. You expected uninterrupted production; instead you got equipment failure and wasted time on costly repairs.

At Greene, Tweed, we understand the consequences of unexpected delays. That's why we developed Arlon® 3000 XT. With a glass transition temperature 35°F (20°C) higher than PEEK, Arlon 3000 XT delivers superior mechanical property retention above 350°F (177°C) and 15,000 psi. That means reliable HPHT components, reduced downtime, and a better day too.

Avoid meltdowns. Visit www.arlon3000xt.com.

Arlon® 3000 XT is patent pending
Arlon® 3000 XT by Greene, Tweed
based on VESTAKEEP®, an
Evonik product



*Arlon® 3000 XT High-Temperature
Thermoplastic Back-up Rings and
Seal-Connect® Connector*

Greene, Tweed – Oilfield
+1.281.765.4500
www.arlon3000xt.com



Social Networking with the Young Professionals

Come out and meet young professionals, Thursday, September 11th at Proof Bar Houston sponsored by Unimin Energy. Cash valet can be found in front of Proof Bar throughout the event.

EVENT INFO

THURSDAY

9.11

5:30 PM TO
7:30 PM

LOCATION

Proof Bar
600 Travis St,
Houston, TX 77006

ORGANIZER

Vivek Ghosh
832-794-6579
vivekghosh
@sbcglobal.net

COST

Free to Members/
Non-Members

SPONSOR



unimin
ENERGY DIVISION

PROPZONE.COM

Auxiliary 2014-2015 Kick-Off Luncheon

EVENT INFO

FRIDAY

9.12

11:00 AM

LOCATION

Masraff's
1753 Post Oak Blvd.,
77056
713-355-1975

EVENT CONTACT

Evelyn Earlougher
281-419-1328
earlougher
@comcast.net

THE MISSING PIECE TO MAXIMIZE YOUR PRODUCTION



You can't put together the puzzle without all the pieces. MicroSeismic's completions evaluation services and real-time microseismic monitoring help you fill in the blanks with recommendations on improved well spacing and stage length, frac coverage area, and analysis on how each well is completed. Our goal is to provide transparent results that you can rely on to maximize your production.

MicroSeismic

MicroSeismic.com/GCSPE | 866.593.0032

A Better Way to Frac

Take a look at the Binder MM Hybrid Frac Polymers...Field tested with Excellent Results

Feature	MM 200	Slickwater FR	Guar	MM 301
Drag Reduction Dose ⁽¹⁾	<0.2 gpt ⁽²⁾	0.6 gpt	NA	<0.2 gpt
Sand Suspension Dose	3-5 gpt	NA	6-9 gpt	3-5 gpt
Sand Loading/Stage ⁽³⁾	120-140%	None	100% ⁽³⁾	120-150%
Divalent/TDS ⁽⁴⁾	Up to 10% TDS	Varied	Low	Unlimited
Crosslinkable ⁽⁵⁾	Yes	No	Yes	Yes
Temperature Stability	275 F	275 F	200 F	300 F
Return Flow	Excellent	Good	Okay	Excellent
Shale Stability	Excellent	Good	Okay	Excellent
Other Chemicals ⁽⁵⁾	None Required	None Required	Multiple	None Required
Truckload Lead Time	Immediate	60 days	Immediate	Immediate

(1) Dose at 67+ percent drag reduction; (2) Instantaneous drag reduction 40% better than standard FR's at one-third the dosage; (3) 100% for guar as reference value; (4) Including salts, acids, bases, crosslinker, shale stabilizers, etc.- excellent for coil; (5) Any breaker except sodium bromate.

9391 Grogans Mill Road, Suite A-1
The Woodlands, TX 77380



(281) 419-9047 office
(281) 362-5612 fax



A Safe Biocide (Except for Bugs)



New from Universal Bacteria Specialist:
An environmentally friendly biocide with 1,450 ppm FACs.

ENVIROLYTE biocide offers you a safe, biodegradable alternative to toxic biocides for controlling bacteria in crude oil production and processing.

- 1,450 ppm free available chlorine and neutral 6.5 pH
- Can treat produced water before reuse
- Clears well of downhole micro-organisms
- Protects production equipment
- Eliminates microbial-induced corrosion

SAFE FOR PEOPLE. GOOD FOR PRODUCTION.



Find out more at
www.universalbacteria.com
or call 281.342.9555

E.P.A. Reg. No. 87636-2

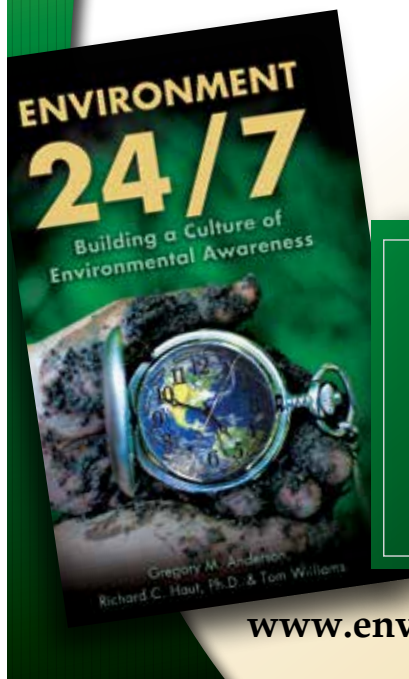
© 2014 Universal Bacteria Specialist (UCS1405/0614)

ORDER TODAY!

ENVIRONMENT 24/7

Building a Culture of
Environmental Awareness

by Gregory M. Anderson,
Richard C. Haut, PHD and
Tom Williams



Learn more and
order your copy
today!



www.environment247.org

EVENT RECAP

Over 250 young professionals were in attendance at this year's Roughneck Camp at Shell's Woodcreek facility. Thank you to all the speakers, volunteers, and attendees for contributing to another successful Roughneck Camp. We hope to see you all again next year.



RNC attendees during Ice Breakers



RNC attendees during Ice Breakers



Co-Chairs Jeff Rhea and Glenn Harris with RNC speaker, Mike Brown



YP Officers at RNC



YP Volunteers at RNC



ELY Global Hydraulic Fracturing Expertise

281-580-4646
www.elyfrac.com

Innovative Custom-Engineered Drilling and Completion Solutions

ENGINEERED TO FIT

- Liner Hanger Systems
- Expandable Systems
- Completion Systems
- Safety and Kelly Valves
- Window Cutting Products
- Rental Tools

TIW
A Pearce Industries Company

Serving the Oil and Gas Industry Since 1917
Tel: 713-729-2110 Fax: 713-728-4767 www.tiwttools.com

Drilling Optimization is a Lot Like Landing a Plane at Night

You shouldn't do either without the proper instruments

- Increased ROP
- Reduced Vibration
- Increased Bit Life
- Reduced Bit Trips



Real-time vibration data and SureDrill dashboard.



For more information, visit www.aps-tech.com/suredrill or call us at 281.847.3700

Turnkey Services Turnkey Trust

We manage your drilling cost and execution risks with **all-inclusive, fixed-price contracts.**

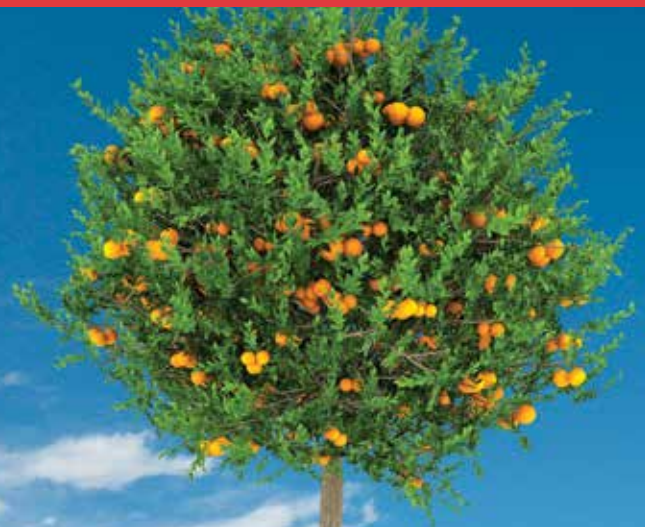
For independent oil and gas producers focused on generating and bringing on prospects for their investors, turnkey services are an ideal way to manage cash and mitigate the risks associated with drilling and completing wells in their portfolio. Commander assumes risk under a fixed cost, turnkey basis, which means our clients can get to first oil safely and faster. Our strength lies in the depth of our engineering and operations. No other turnkey company has our range of Gulf Coast geological expertise—knowledge that comes from drilling and completing over 2,000 wells on the Gulf of Mexico shelf and Texas/Louisiana inland waters. **It all comes down to trust.**

www.commanderdrilling.com

Commander Drilling Technologies LLC
10190 Katy Freeway, Suite 351
Houston, Texas 77043



ORANGE IS THE NEW GREEN



Flotek's citrus-based, environmentally friendly **CnF®** fracturing additives will revolutionize the way the world thinks about fracturing and will improve your production.



For more information contact
cesimkt@flotekind.com
or call
832-308-CESI (2374)

This year's Emerging Engineers Conference was a great success. It drew over 150 young professionals in the oil and gas industry. The Emerging Engineers Conference is an annual conference designed specifically for young professionals to provide a forum to explore topics that will shape and develop their careers. Thank you to all the speakers, sponsors, volunteers and attendees for contributing to another successful Emerging Engineers Conference. We hope to see you all next year!



Panel Discussion Emerging Innovative Technology



SPE-GCS YP Membership Coordinator



Panelists for "Redefining Your Career"



SPE-GCS YP BOD Vice President, Past President



SPE-GCS YP BOD EEC Chair



Poster Session and Competition



SPE-GCS YP Petro Bowl Chair and Communication Chair

SAVE THE DATE

Professional Networking Event

THURSDAY

10.09

6 PM TO 9 PM

Hosted by SPE-GCS and SWE-HA Section

THE DOWNTOWN CLUB HOUSTON CENTER

Wear Something Pink | Hors D'oeuvres and Wine Tasting

ONLINE REGISTRATION

\$35 by 09.30.14

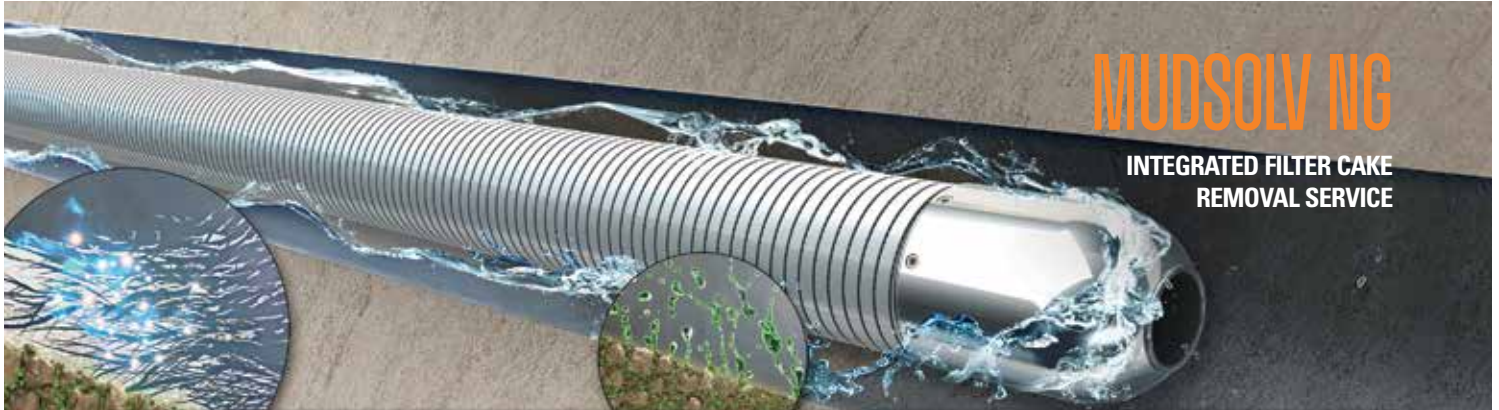
\$45 after 09.30.14

\$55 At Door

*Parking Validation Included in Pricing

CONTACT

Xuan VandeBerg
Membership Chair
stem.fields@gmail.com



MUDSOLV NG

INTEGRATED FILTER CAKE
REMOVAL SERVICE

Optimize well productivity with uniform filter cake removal



The MUDSOLV NG[†] filter cake removal service enables simultaneous gravel packing or standalone placement for complete filter cake removal to optimize well productivity. The service integrates analytical tools and novel breaker chemistries to deliver the uniform removal of the toughest filter cake and related flow restrictions.

The new generation oil- and water-base breakers within the service are non-corrosive to completion hardware and exhibit an exceptional HSE profile, making them ideally suited for sensitive offshore and onshore environments.

miswaco.com/completions



[†]Mark of M-I L.L.C.

Delivering Award-Winning, Technology-Driven Engineered Solutions to the Oil & Gas Industry



World-Class Completions & Production Solutions

- Completion Fluids Products/Services
- Well Testing Equipment/Services
- Fluids Management



tetrtec.com

© 2014 TETRA and the TETRA logo are registered trademarks of TETRA Technologies, Inc. All rights reserved.

Why can Weatherford deliver more real time data at the wellsite than any other mudlogging company?

Tim has cabin fever.



**EXCELLENCE
FROM THE
GROUND UP™**

Our Global Operations Manager for Surface Logging Systems, Tim, is all smiles these days. That's because he and his team recently designed a new state-of-the-art mudlogging cabin. The spacious interior makes room for more laboratory services at the wellsite. Now exploration companies have access to more data in real time, so they can make better decisions faster. It's one more way Weatherford Mudlogging is committed to Excellence from the Ground Up.

SURFACE LOGGING SYSTEMS
www.weatherford.com/surfacelogging
mudlogging.services@weatherford.com



SPE Overview of Subsea Well Abandonment Training Course

This training course will provide a high-level overview of how to perform subsea well abandonments. It will take the learner step by step through the regulations, guidelines and different subsea well tree configurations; review vessels and riser systems available to safely conduct subsea well abandonment operations; and discuss lower and upper wellbore abandonment best practices, different deployment methods and downhole tool selections.

COURSE OBJECTIVES:

- Understand the plug and abandonment guidelines for subsea wells
- Review the different floating vessels and riser systems available for subsea intervention
- Step by step understanding of subsea Well Plug & Abandonment methodology
- Understand the limitations of today's technologies

BART JOPPE, GLOBAL BUSINESS DEVELOPMENT MANAGER FOR WELL PLUG & ABANDONMENT, BAKER HUGHES

Bart Joppe is global business development manager for well plug & abandonment at Baker Hughes in Houston. He is responsible for technical, commercial and operational support for the company's well abandonment services. In his 16 years with Baker Hughes, Joppe has performed operational, technical sales and business development roles in Europe, the USA and the Middle East. His technical expertise includes fishing and milling services, thru-tubing intervention and wellbore isolation. He has served as a project manager for new technology development and as an instructor for wellbore intervention training programs.

DARIN HILTON, COMMERCIAL MANAGER FOR WELL OPS US HELIX ENERGY SOLUTIONS GROUP

Darin Hilton currently serves as commercial manager for well ops US and has worked for Helix Energy Solutions Group for over 5 years. He has over 18 years of experience in the offshore industry. Hilton earned his BS in nautical science with a minor in marine engineering from Maine Maritime Academy. He holds a USCG Master Unlimited Tonnage license with OIM unrestricted endorsement.

EVENT INFO

MONDAY

09.22

8:00 AM TO
5:00 PM

MEMBERS

\$750

NON-MEMBERS

\$950

EVENT CONTACT

Amy Chao, SPEI
972-952-9331
achao@spe.org

LOCATION

Houstonian Hotel
111 North Post Oak
Houston, TX
77024



Technical Documentation Development and Management Consulting



Documentation help = more available engineering time

Technical Writing

- + Develop content
- + Multiple authors – consistent voice
- + Formatting, grammar & readability
- + Develop / edit graphics

Management Consulting

- + Documentation & project management
- + Procedures, processes & workflow
- + RFPs, RFQs & contract management

*- Quick turnaround
- On-demand resource
- Turnkey publication*

ZAETRIC®
www.zaetric.com



VIKING ENGINEERING, L.C.

CRITICAL WELL ENGINEERING CONSULTING SERVICES

VIKING'S TEAM OF HIGHLY TRAINED PETROLEUM PROFESSIONALS LEND THEIR EXPERIENCE TO CREATIVE WELL DESIGNS.

WE CAN HELP PLAN AND EXECUTE YOUR TOUGH WELLS.

- PETROLEUM CONSULTING
- HPHT WELL DESIGN
- APB ANALYSIS
- PROJECT MANAGEMENT
- FAILURE ANALYSIS
- TRAINING

VISIT OUR WEBSITE: WWW.VIKINGENG.NET
OR CALL: (281) 870-8455 IN HOUSTON

www.intertek.com



Upstream Services

6700 Portwest Drive | Houston, TX 77024
713.479.8400
westportservices@intertek.com

PREMIUM CONNECTIONS

Meeting your exacting requirements.

SealLock® | WedgeLock®
TKC™ | TS™
connection technology



www.huntingplc.com

© 2013 Hunting

maxoil

PROCESS SOLUTIONS

MAXIMIZING PERFORMANCE THROUGH OPERATIONAL EXCELLENCE

- OPERATIONS ASSURANCE
- SUBSEA PRODUCTION REALIZATION
- FLOW ASSURANCE
- SEPARATION SYSTEMS
- GAS TREATMENT & TRANSPORT
- PRODUCED WATER MANAGEMENT
- SAND & SOLIDS MANAGEMENT
- CONTAMINANTS MANAGEMENT
- CHEMICAL MANAGEMENT
- PROCESS/PRODUCTION OPTIMIZATION
- PROCESS TROUBLESHOOTING
- OPERATIONS PERFORMANCE STRATEGY (OPS)
- SYSTEMS AWARENESS TECHNICAL TRAINING



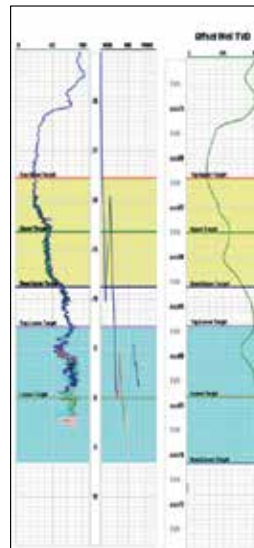
WE ARE DEDICATED TO DELIVERING STRATEGIC VALUE FOR OUR CLIENTS.

Our highly skilled technical team understand the changing and challenging needs of the oil and gas industry and the importance of objective, innovative and cost effective solutions.

contact@maxoilsolutions.com • www.maxoilsolutions.com
ABERDEEN • LONDON • HOUSTON • STAVANGER • KUALA LUMPUR • PERTH

GeoSteering llc

www.geosteering.com



Geosteering Services

Highly qualified personnel with 20+ years DD & LWD experience

24/7 Real-time monitoring or reports from LAS files

Proprietary software

Geosteering Software

TST interpretation for GR only measurements

Image displays / interpretation of azimuthal GR, resistivity or density measurements

Resistivity modelling / interpretation for LWD propagation resistivity

Software sales, training and technical support

info@geosteering.com

Call 281 573 0500

SPEI SPE SUBSEA WELL ABANDONMENT WORKSHOP

TUESDAY - WEDNESDAY
SEPTEMBER 23-24 7:00 AM - 4:00 PM

The permanent abandonment of subsea oil and gas wells around the world represents an increasingly significant challenge and liability for the E&P industry. Historically, wells have been designed, constructed and operated using methods, techniques and materials suitable for long-term production, with less emphasis and forethought to well abandonment operations.

This SPE workshop will be an open venue to discuss and learn about the technical, operational and liability challenges faced by the industry. As an informal gathering of operators, service providers and regulators, this workshop will provide a unique opportunity for the exchange of information, ideas and solutions that may be applicable today.

Location **THE HOUSTONIAN HOTEL**

111 North Post Oak Lane, Houston, TX 77024

Event Contact **AMY CHAO, SPEI**

972-952-9331 / achao@spe.org

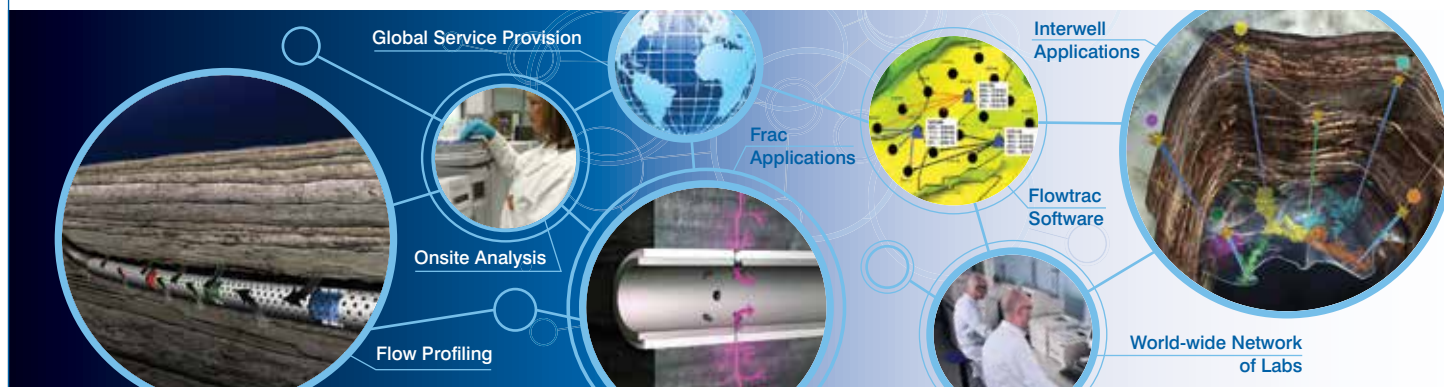
MEMBERS \$825 UNTIL AUG 22, THEN \$925

NON-MEMBERS \$1,025 UNTIL AUG 22, THEN \$1,125

Tracerco

Providing Insight Onsite

Know Production. No Surprises.



Reservoir Characterisation Using Tracer Technology

- Expertise in waterflood, injection gas, CO₂ and EOR chemical tracer applications
- Long term wellbore fluid inflow characterisation using no wires, fibres or well intervention
- Unconventional stage production measurement using Tracerco patented technology
- Global network of laboratories and operational capabilities providing local service provision to key oil and gas regions

Tracerco, 4106 New West Drive, Pasadena TX 77507 USA

Tel: +1 281 291 7769 Toll Free: 1 800 288 8970

www.tracerco.com/reservoir-characterisation

Reservoir
Technologies 

SPE GULF COAST SECTION DIRECTORY

YOUR GUIDE TO YOUR ORGANIZATION LEADERS

Gulf Coast Section Officers – 2014-2015

CHAIR

Jeanne Perdue, Occidental
713-215-7348
jeanne_perdue@oxy.com

VICE CHAIR

Ivor Ellul, RPS Knowledge Reservoir
713-595-5100
iellul@knowledge-reservoir.com

SECRETARY

Sunil Lakshminarayanan, Weatherford
713-849-1861
sunil.lakshminarayanan@weatherford.com

TREASURER

Lucy King, Miller & Lents
713-308-0343
lking@millerandlents.com

VICE TREASURER

Alex McCoy, Occidental
713-366-5653
alexander_mccoy@oxy.com

CAREER MANAGEMENT

Patty Davis, PetroSkills
832-426-1203
patty.davis@petroskills.com

COMMUNICATIONS

Subash Kannan, Anadarko
832-636-7679
subash.kannan@anadarko.com

COMMUNITY SERVICES

Amy Timmons, Weatherford
713-836-6563
amy.timmons@weatherford.com

EDUCATION

Gabrielle Guerre, Ryder Scott
713-750-5491
gabrielle_guerre@ryderscott.com

MEMBERSHIP

Xuan VandeBerg
832-444-5143
stem.fields@gmail.com

PAST CHAIR

Mike Strathman, Trinity Group
713-614-6227
mike-strathman@att.net

PROGRAMS

David Tumino, Murphy Oil
281-717-5123
tuminospe@hal-pc.org

SOCIAL ACTIVITIES

Jim Sheridan, Baker Hughes
281-432-9209
jim.sheridan@bakerhughes.com

TECHNOLOGY TRANSFER

Carol Piovesan, APO Offshore
281-282-9291
cpiovesan@apooftshore.com

YOUNG PROFESSIONALS

Pavitra Timbalia, ExxonMobil
832-624-0505
pavitra.a.timbalia@exxonmobil.com

DIRECTORS 2013-15

Trey Shaffer, ERM
832-209-8790
trey.shaffer@erm.com

John Lee, Univ. of Houston
713-743-4877
wjlee3@uh.edu

Deepak Gala, Shell
281-544-2181
deepak.gala@shell.com

DIRECTORS 2014-16

Jenny Cronlund, BP Exploration
281-366-8966
jenny.cronlund@bp.com

Torrance Haggerty, Battelle Memorial Inst.
713-260-9640
haggertyt@battelle.org

Eric Kocian, ExxonMobil
832-624-7962
eric.m.kocian@exxonmobil.com

SPE GULF COAST NORTH AMERICA REGIONAL DIRECTOR

Bryant Mueller, Halliburton
281-818-5522
bryant.mueller@halliburton.com

Committee Chairs

AWARDS

Jeremy Viscomi,
Petroleum Technology Transfer Council
785-864-7396
jviscomi@pttc.org

CONTINUING EDUCATION

Nii Ahele Nunoo, NOV
507-304 5416
Nii.Nunoo@nov.com

ESP WORKSHOP

Noel Putscher, Newfield
281-674-2871
nputscher@newfield.com

GOLF CO-CHAIRS

Cameron Conway, KB Machine
281-217-0660
cconway@kb-machine.com

Robin Smith, Insight Investments
713-907-1694
rsmith@insightinvestments.com

INTERNSHIPS

Gabrielle Guerre, Ryder Scott
713-750-5491
gabrielle_guerre@ryderscott.com

NEWSLETTER

John Jackson, Unimin Energy
832-247-0233
editor@spgcs.org

SCHOLARSHIP

Tanhee Galindo, Catalyst Oilfield Services
832-693-9010
gcs-scholarship@spemail.org

SPORTING CLAYS

Paul Conover, NOV
713-346-7482
paul.conover@natoil.com

TENNIS

James Jackson, Halliburton
713-366-5704
james.jackson@halliburton.com

WEB TECHNOLOGY

Shivkumar Patil, Aker Solutions
713-369-5352
Shivkumar.Patil@akersolutions.com

SECTION MANAGER

Kathy MacLennan, SPE-GCS
713-779-9595 x 813
kmaclennan@spe.org

Study Group Chairs BUSINESS DEVELOPMENT

Steve Mullican, Grenadier Energy Partners
281-907-4120
smullican@grenadierenergy.com

COMPLETIONS & PRODUCTION

Mark Chapman, CARBO Ceramics
281-921-6522
mark.chapman@carboceramics.com

DIGITAL ENERGY

Rick Morneau, Morneau Consulting
281-315-9395
RickMorneau@outlook.com

DRILLING

Ernie Prochaska, NOV Downhole
832-714-3842
ernie.prochaska@nov.com

GENERAL MEETING

Raja Chakraborty, Shell
281-544-2148
Raja.Chakraborty@shell.com

HEALTH, SAFETY, SECURITY, ENVIRONMENT AND SOCIAL RESPONSIBILITY

Trey Shaffer, ERM
832-209-8790
trey.shaffer@erm.com

INTERNATIONAL

Owen Jones, ExxonMobil
Development Company
832-624-2019
owen.jones@exxonmobil.com

NORTHSIDE

Robert Estes, Baker Hughes
713-879-4414
robert.estes@bakerhughes.com

PERMIAN BASIN

Amy Timmons, Weatherford
713-836-6563
amy.timmons@weatherford.com

PETRO-TECH

Jessica Morgan, Blackstone Minerals
713-929-1633
jmorgan@blackstoneminerals.com

PROJECTS, FACILITIES, CONSTRUCTION

Chris Shaw, Shell
281-544-6796
C.Shaw@shell.com

RESEARCH & DEVELOPMENT

Skip Davis, Technology Intermediaries
281-359-8556
skdavis@technologyintermediaries.com

RESERVOIR

Rafael Barroeta, Occidental
713-366-5356
rafael_barroeta@oxy.com

WATER & WASTE MANAGEMENT

Kira Jones, Consultant
kirarjones@gmail.com

WESTSIDE

Sandeep Pedam, ConocoPhillips
(832) 486-2315
sandeep.pedam@conocophillips.com

CONNECT INFORMATION

NEWSLETTER COMMITTEE

CHAIRMAN | John Jackson
editor@spegcs.org

AD SALES | Pat Stone
starlite1@sbcglobal.net

BOARD LIAISON | Subash Kannan

NEWSLETTER DESIGN | DesignGood
designgoodstudio.com

SPE HOUSTON OFFICE

GULF COAST SECTION MANAGER
Kathy MacLennan | kmaclennan@spe.org

GCS ADMINISTRATIVE ASSISTANT
Sharon Harris | sharris@spe.org

HOURS & LOCATION

10777 Westheimer Road, Suite 1075
Houston, Texas 77042
P 713-779-9595 | F 713-779-4216
Monday - Friday 8:30 a.m. to 5:00 p.m.

PHOTO SUBMISSIONS

We are looking for member photos to feature on the cover of upcoming issues! Photos must be at least 9" by 12" at 300 DPI. Email your high resolution picture submissions to: editor@spegcs.org

CHANGE OF ADDRESS

To report a change of address contact:
Society of Petroleum Engineers
Member Services Dept.
P.O. Box 833836
Richardson, Texas 75083-3836
1.800.456.6863 | service@spe.org

CONTACT

For comments, contributions, or delivery problems, contact editor@spegcs.org.

Cardno PPI SEMS Compliance Services

- > Consultants and Clerks
- > Customized Documents
- > Software Solutions

920 Memorial City Way, Suite 900, Houston, TX 77024
Phone 713 464 2200 Email usoilandgas@cardno.com
www.cardnoppi.com



SUBJECT MATTER EXPERTS

DESIGN
ANALYSIS
TESTING

STRESS ENGINEERING SERVICES INC.
281.955.2900
www.stress.com

HOUSTON • CINCINNATI • NEW ORLEANS • BATON ROUGE • CALGARY



NON-PROFIT ORGANIZATION
U.S. POSTAGE PAID
PERMIT NO. 6476
HOUSTON, TX

**SOCIETY OF PETROLEUM ENGINEERS
GULF COAST SECTION**

10777 Westheimer Road
Suite 1075
Houston, TX 77042

SEPTEMBER 2014
CALENDAR

SUNDAY	MONDAY	TUESDAY	WEDNESDAY	THURSDAY	FRIDAY	SATURDAY
	1	2	3	Research & Development 4	5	6
7	8	Northside Petro-Tech 9	Drilling 10	Board of Directors General Meeting Young Professionals 11	Auxiliary 12	13
14	Permian Basin 15	16	Westside 17	18	19	20
21	SPEI Subsea Well Abandonment Training Course 22	SPE Subsea Well Abandonment Workshop 23	Business Development Completions & Prod. SPE Subsea Well Abandonment Workshop 24	Reservoir 25	26	26
28	29	30				