



Gulf Coast Section

AUGUST
2014

CONNECT

SPE GULF COAST SECTION NEWSLETTER

SPE BUSINESS DEVELOPMENT STUDY GROUP AND SPE YOUNG PROFESSIONALS GROUP: 2014-15 SEASON SOCIAL KICKOFF

BUSINESS DEVELOPMENT P. 11

THE CHALLENGES AND
OPPORTUNITIES FACING
OPERATORS PLANNING
MAJOR CAPITAL
PROJECTS (MCPs) IN
TODAY'S OIL AND GAS
ENVIRONMENT

HEALTH SAFETY & ENVIRONMENT P. 9

SPE-GCS 31ST ANNUAL
TENNIS TOURNAMENT

P. 13

SPE SUBSEA WELL
ABANDONMENT
WORKSHOP

P. 25

2014-2015 SPE GULF
COAST SECTION
KICKOFF

BOARD OF DIRECTORS P. 16

SPEGCS.ORG

CHAIR'S CORNER



JEANNE PERDUE
2014-2015 SPE-GCS Chair

Welcome to the new program year for the SPE Gulf Coast Section – and a new face in the Chair's Corner. I haven't had the chance to write a regular monthly column for about five years, so I relish this opportunity to hop up on my soapbox and opine. I plan to use this bully pulpit to do all kinds of good things: inform, entertain, motivate, acknowledge, and maybe even inspire.

But first, let me share with you my personal motto: "Learning, Loving, Serving." I figure a life spent doing these three things is a life well spent. The reason I share this with y'all is that this motto fits so well with what SPE is all about.

Learning – SPE provides many ways to learn new things in our industry, from SPE papers and journals, to international and regional conferences and workshops, to local study group luncheons and continuing education classes. Plus, SPE has opportunities for members to help others learn, through Ambassador Lectures to the public, the SPE mentoring program, SPE Student Chapter support, scholarships and internships, and Energy4Me kits for schools. It's always good to learn something new every day, and one of my favorite expressions is: "Knowledge shared is knowledge squared."

Loving – This means treating other people like they are something special and helping them be happy, healthy, and successful. SPE focuses on developing its members, helping them be successful in their careers, not only by teaching them, but through networking. My mom always said: "It's not what you know, it's who you know," and while not grammatically correct, it is spot on in concept. In my 33 years of SPE membership, I have made so many friends that I can hardly get to any SPE papers at the Annual Meeting because I'm so busy catching up with people on the way. And you will notice that I sign my SPE emails and columns "Love, Jeanne" because I really, truly love people.

Serving – SPE offers so many ways to volunteer, even if you're a young, Yankee, female chemist like I was when I joined. And if you keep on volunteering, eventually they'll make you Chair – even if you're not a petroleum engineer and never drilled a well or been to an oilfield in your life. Not only does serving give you experience that you may not get at work, such as running a \$1.5 million organization with 18,000 members, but it brings you immense satisfaction to see the fruits of your labor and see others benefit from them. As with all aspects in life, "The more you put into it, the more you get out of it."

So my "Learning, Loving, Serving" motto dovetails nicely with my theme and goals for the 2014–15 year: "E-N-V = Education, Networking, Volunteering."

EDUCATION

Increase Study Group attendance and webinars and continuing education classes.

Increase scholarships (both number and amount) and internships.

Provide better Student Chapter support and encourage them to attend Study Groups.

Resurrect the CHASE program at U of H for master math teachers.

NETWORKING

Launch two new FUNdraisers for scholarships: the OilSim Challenge and the Poker Tournament.

Resurrect the quarterly Membership Networking Events and the Executive Breakfast.

Launch a new Legion of Honor Dinner so YPs can capture and document some of their stories.

Improve the Connect newsletter, the e-Newsletter, social media, and the SPEGCS.org website to communicate better with our members.

VOLUNTEERING

Create new volunteer positions of Publisher and Sponsorship Chair to offer special packages to companies wishing to support our Section's events and activities.

Update the Section Operations Manual (dated 2003) and consolidate our policies into a nice spreadsheet.

Conduct the biannual financial review and investigate better investment options.

Boost our volunteer recognition programs through awards, publicity, and gifts.

If we can accomplish all these things together, surely we will be the E-N-V (envy) of SPE Sections around the world! I cordially invite all current and would-be Section volunteers to attend our free Annual Kickoff Meeting on Friday, August 22, 1–4 pm at the Hilton Houston Westchase Hotel. Gifts, refreshments, exciting plans, new ideas, networking – what better excuse is there to leave the office early? I hope to see you there!

Love, Jeanne

CONTENTS



STUDY GROUPS

7 **Projects Facilities & Construction**
08.06.2014
Summer Series:
BuoyantTower™

9 **Health Safety & Environment**
08.21.2014
Major Capital Projects -
Increasing Safety Assurance
in Construction, Load out,
Transportation, Installation,
Hookup and Commissioning

11 **Business Development**
8.27.2014
SPE Business
Development Study Group
and SPE Young Professionals
Group: 2014-15 Season
Social Kickoff

COMMITTEES

13 **SPE-GCS**
31st Annual
Tennis Tournament
11.06.2014 - 11.07.2014

16 **2014-2015 SPE-GCS**
Kick Off Meeting
08.22.2014

17 **Young Professionals**
Volunteering
at the Beacon
08.03.2014

MORE

5 **Membership**
Extravaganza
08.28.2014

IN EVERY ISSUE

5 **SPE-GCS June**
Membership Report

19 **Event Recap**
Sporting Clays
Tournament

26 **SPE-GCS**
Directory

23 **SPE Overview of**
Subsea Well
Abandonment
Training Course
09.22.2014

25 **SPE SUBSEA WELL**
ABANDONMENT
WORKSHOP
09.23.2014 - 09.24.2014

BOARD OF DIRECTORS

MEETING

THURSDAY, AUGUST 14 / 7:30 AM TO 10:30 AM

Location **SPE HOUSTON OFFICE**

10777 Westheimer Rd., Suite 1075 , Houston, TX 77042

Event Contact **SHARON HARRIS**

713-457-6821 EXT. 821 / 713-779-4216 FAX / sharris@spe.org

Trust your harness?



one reliable solution. Entero[®] MOSAIC[™]

With over ten years of continuous progress and innovation for corporate reserves and evaluations, Mosaic has the product stability and client responsiveness that E&P companies have come to expect. Discover what it's like to have a system and team you can depend on to achieve your end goal.

- ◊ Better Productivity
- ◊ Higher Efficiency
- ◊ Faster Speed
- ◊ Trusted Information

Expect More. Accomplish More. Learn More at www.entero.com/mosaic
Contact Jill Wyatt at: (713) 446-4633



SPE-GCS MEMBERSHIP REPORT June 2014

June 2014
TOTAL: 14,789
YP: 3,208

May 2014
TOTAL: 14,519
YP: 3,051



SPE-GCS MEMBERSHIP EXTRAVAGANZA!

THURSDAY, AUGUST 28 6:30 - 9:30 PM

Come join us for a fun evening to help promote SPE membership growth and retention and to foster professional networking. Bowling, billiards, appetizers, and soft drinks included; cash bar available. New, old, transferred, and prospective members are invited.

Location **LUCKY STRIKE HOUSTON**

1201 San Jacinto, Suite 321 / Houston, TX 77002

Event Contact **XUAN VANDEBERG**

832-444-5143 / STEMfields@gmail.com

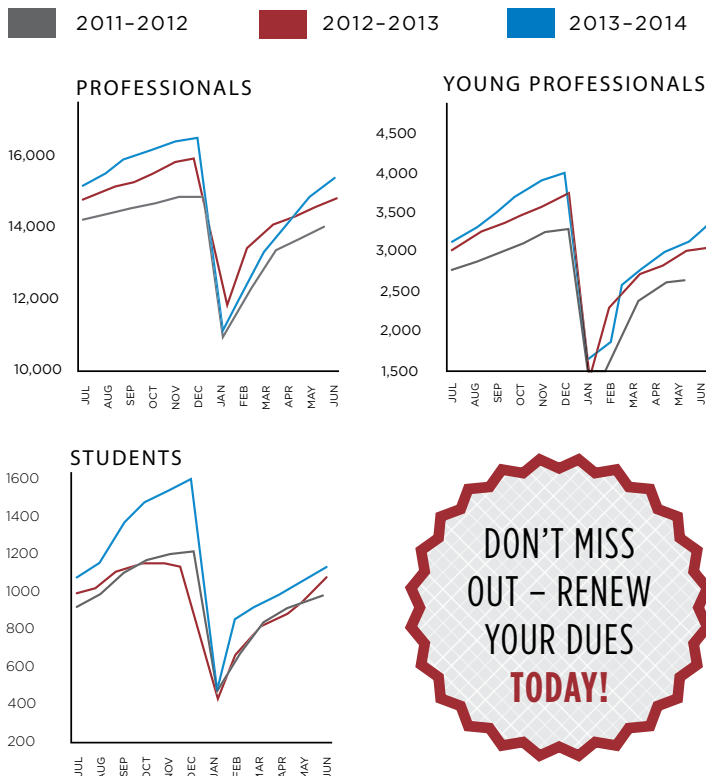
\$10 Online Registration / \$15 At Door

Event Sponsor **FUGRO**

SPE-GCS MEMBERS	JUNE		MAY	
	TOTAL	YP	TOTAL	YP
New Members	60	26	29	14
Transferred to Section	4	1	1	N/A
Unpaid	3,146	1,203	3,581	1,329

STUDENT MEMBERS	JUNE		MAY	
	PAID	UNPAID	PAID	UNPAID
Texas A&M	734	214	703	234
Rice	38	25	34	26
HCC	50	20	48	20
UH	306	177	479	191
Total	1,128	436	1,264	471

Total Paid/Unpaid	15,917	3,582	15,783	4,052
% Paid	81.6%		79.6%	



TEXAS A&M UNIVERSITY.

Congratulations! Texas A&M University Chapter is receiving a Gold Standard Student Chapter Award again this year at the ATCE in Amsterdam.

Reservoir to Refinery.

Innovative solutions for the life of your well.

- Resin Coated Proppants
- Performance Additives
- Production Chemicals

E-mail us at oilfield@momentive.com. **MOMENTIVE**

Resume Production



You planned for this.

You have the experience and expertise of the global leader in wellbore intervention on speed dial to solve problems so production can resume.

Call us or visit BakerHughes.com/GOM today for peace of mind tomorrow.



PROJECTS FACILITIES & CONSTRUCTION

BuoyantTower™

Session 6 of the Summer Series on “Floating Production Systems” presents the similarities and differences between Spars and the BuoyantTower™ and how each design met the challenges and delivered solutions to the clients.

The Spars have been a deepwater enabling technology in the offshore oil and gas industry. The first drilling and production classic spar, Neptune, was installed in the Gulf of Mexico. The design has evolved from the classic spar, to the truss spar and on to the cell spar, based on the Ed Horton portfolio of intellectual properties.

Today, the same group that brought the spar to market has now developed a self-installing shallow water compliant tower spar as a cost-effective, relocatable enabler, which can be favorably compared to a jacket for production and drilling. Named the BuoyantTower™, the unit is operating today offshore Peru, configured for drilling and production.

GREG NAVARRE



Mr. Greg Navarre has over 30 years of oil and gas experience. A Marine Engineering and Naval Architecture graduate of the United States Merchant Marine Academy, Greg has extensive experience in the design, engineering, and construction, of gravity-based platforms, jackups and floating drilling facilities.

Mr. Navarre is a member of the Society of Petroleum Engineers, the Marine Technology Society, and the American Association of Drilling Engineers. He holds a U.S.C.G. Unlimited Chief Engineer’s License and served for 20 years in the US Naval Reserve, attaining the rank of Lt. Cdr.

Rose & Associates
 Courses Consulting Software

Unconventional Resource Valuation and Assessment Course
 (3 to 5 days)

UCRA Software
 To model, value and risk drilling in resource plays

www.roseassoc.com



EVENT INFO

Wednesday
8.6.14

4:30 PM TO 6:30 PM

SPEAKER

Greg Navarre
President
Horton Wison Deepwater

LOCATION

Wood Group Mustang
Opus Building Events Room
17420 Katy Freeway
Houston, TX 77094

EVENT CONTACT

Gary Lamaire
713-407-7648
garrett.lemaire
@worleyparsons.com

MEMBERS

\$35

NON-MEMBERS

\$45

STUDENTS

\$15

PHDWIN™

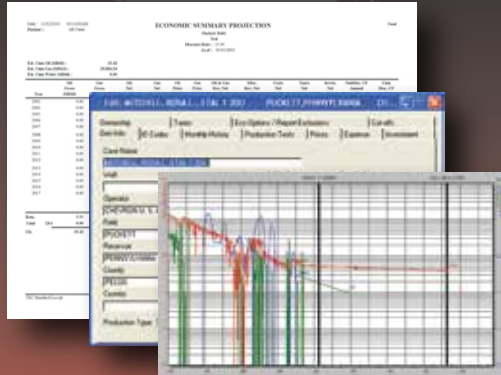
Integrated Economics & Decline Curve Analysis

NOW EVEN MORE POWERFUL WITH

PHDRMS™

Reserves Management System

The *complete solution* for evaluating, managing, and reporting reserves and performance data.



Schedule an **online** presentation **TODAY!**

TRC Consultants, LC 888-248-8062 www.phdwin.com

SIGNA ENGINEERING CORP.



Managed Pressure Drilling School

Once per Quarter
Every Year

- Petroleum Engineering
- MPD, MudCap and UnderBalanced Drilling
- Well Construction
- Project Management
- Field Execution
- Custom Software Design
- Custom Training

2 Northpoint Dr., Ste. 700
Houston, TX 77060
281.774.1000

Experience **Signature Performance**

www.signa.net



no longer flying under the radar

Precision
Directional Services
precisiondrilling.com/directional

HEALTH SAFETY & ENVIRONMENT

Major Capital Projects - Increasing Safety Assurance in Construction, Load out, Transportation, Installation, Hookup and Commissioning

The challenges and opportunities facing operators planning Major Capital Projects (MCPs) in today's oil and gas environment include turnkey contracting strategies, global supply chains, evolving technologies, increasingly stringent regulations, competition for scarce resources, and inflationary pressures, to name a few. These factors have the potential to impact personal and process safety performance, directly or indirectly, throughout the project's lifecycle. The implementation of a formal, stage gate project management system and decision quality process is critical in order to alleviate the project risks, assure operational excellence, and improve the constructability, operability and maintainability of the future asset. By way of example, this presentation will dwell on the Execute phase activities of an offshore MCP, from design and engineering to construction, installation, hookup and commissioning.

STEVE FRAMPTON



Steve Frampton is the Construction and Commissioning Manager for Marathon Oil's Global Projects Organization. His work experience spans over 30 years in international offshore developments and production operations. Steve joined Marathon Oil in 1981 and supported the design, engineering, construction, offshore hookup and commissioning of the three Brae North Sea platform complexes (5 years each), enabling an initial production rate of around 100k

BOPD from each platform. From the North Sea, Steve joined the design team in Houston for the Sakhalin 2 project (100k BPD) before relocating to South Korea for the construction and onshore commissioning phase. Steve eventually served as the Offshore Installation Manager on Sakhalin 2. Steve's next project in Equatorial Guinea involved the management of construction activities of the Marathon Equatorial Guinea Production Ltd (MEGPL) onshore gas facility (950 MMSCFD/70k BPD) on Bioko Island in Malabo. At the end of the construction phase, he stayed with the project, becoming the Operations Superintendent. In 2006, Steve relocated to Gabon as Operations Manager for Marathon's Tchatamba offshore assets. In 2010, he joined the Marathon Norway Operations group for a short time before moving back to Houston. In the last four years, Steve has been working on new projects for Kurdistan and Equatorial Guinea. His current assignment is the new Alba Compression Platform (950 MMCFD), offshore Bioko Island, which will be field-commissioned in 2016.

Steve graduated with a BSc. (Hons.) in Mechanical Engineering from Lanchester Polytechnic, Coventry and completed an indentured apprenticeship with Rolls Royce Limited (Aero division) in the UK.

Reaching Deeper
With the largest fleet of deep, high-pressure coiled tubing, coupled with basin-specific expertise

Going Further
To find solutions to our customers' wellsite challenges, safely and efficiently

That's the IPS Advantage

Integrated Production Services www.ipsadvantage.com



EVENT INFO

Thursday
8.21.14

11:00 AM TO 1:00 PM

SPEAKER

Steve Frampton
Major Projects - Construction
and Commissioning Manager
Marathon Oil Company

LOCATION

Petroleum Club of Houston
800 Bell St
Houston, TX 77401

EVENT CONTACT

Trey Shaffer
832-209-8790
trey.shaffer@erm.com

MEMBERS

\$40

NON-MEMBERS

\$50

CoolSet™

Curable Resin-Coated Proppant

Prevent proppant flowback without activator

CoolSet proppant – frac fluid and breaker friendly – is your no-activator, low-temperature solution to enhance conductivity and increase hydrocarbon production.

Get more from your wells at Santrol.com/CoolSet



SANTROL
A Fairmount Minerals Company

For direct technical data
CoolSet Product Director
Taso Melisaris
713.234.5450 x 42271
Technology@FMSand.com




Still GROWING...
and revolutionizing Downhole Video Diagnostic services

See what others can only imagine! Experience reality with our patented LiteSabre® diffused lighting and up to 1000 lumens in an OptiGel™ clear window strategically displaced to the problem area downhole.

- E-line Down and Side View Video Surveillance
- 16 Hours of Slickline or CT-Deployed Memory Video
- 30 frames P/S, High-Definition Color Video Recording
- Shallow Work Video

Bringing new technology to the challenges of downhole image capture.

 **Abrado Wellbore Services**

www.abrado-intl.com
Email us at: info@abrado-intl.com



 **TOP-CO**

www.top-co.ca
1.832.300.3660

topcosales@top-co.ca

Fit-for-Purpose Casing, Cementing, and Completion Solutions

Ask our Petroleum Engineers how we can help you :

- Reach TD
- Achieve Zonal Isolation
- Ensure Wellbore Integrity

BUSINESS DEVELOPMENT

Business Development and Young Professionals: 2014-15 Season Social Kickoff

The SPE Business Development Study Group and SPE Young Professionals Group are kicking off the 2014-15 season with a second annual joint social at Sambuca Restaurant downtown. Come out and hear what the groups have planned for the season. In addition to enjoying great food and company, we will be soliciting mentors and mentees to be a part of the SPE mentoring program. Whether you are starting off in the industry or are an experienced professional, this event is a chance to network with a diverse group in A&D, finance, engineering, geoscience and land.

This event is \$10 and is limited to the first 200 registered guests so register now to reserve your place. The registration fee includes food and entertainment. We hope to see you there!

SPE BD SEASON PASS

Don't forget to lock in savings and be automatically pre-registered for all nine 2014-2015 events, INCLUDING the Kickoff Social. Simply utilize the link below to a "faux" meeting and register as you would normally...and you are in for the entire season!

<http://www.spegcs.org/events/2593/>



CEMLab—Cement Lab Data Management Software

- Web-based
- Test results
- Slurry design
- Search

Pegasus Vertex, Inc.
(713)981-5558 | sales@pvisoftware.com



Cardno PPI
Quality Assurance Solution

Where On-Demand Technology Meets On-the-Ground Expertise

920 Memorial City Way, Suite 900, Houston, TX 77024
Phone 713 464 2200 · Email USOilandGas@cardno.com
www.cardnoppi.com

Cardno PPI



EVENT INFO

Wednesday
8.27.14

5:00 PM TO 7:30 PM

STUDY GROUPS

SPE Business Development Study Group and SPE Young Professionals Group

LOCATION

Sambuca Restaurant
909 Texas Ave
Houston, TX 77002

EVENT CONTACT

Connie Lin and Vivek Ghosh
Connie: 713-485-2295
Vivek: 832-794-6579
conli@statoil.com
Vivek.Ghosh@shell.com

MEMBERS & NON-MEMBERS

\$10
Limited to first
200 Pre-Registrants

Drilling Optimization is a Lot Like Landing a Plane at Night

You shouldn't do either without the proper instruments

- Increased ROP
- Reduced Vibration
- Increased Bit Life
- Reduced Bit Trips



Real-time vibration data and SureDrill dashboard.



For more information, visit www.aps-tech.com/suredrill or call us at 281.847.3700

Turnkey Services Turnkey Trust

We manage your drilling cost and execution risks with **all-inclusive, fixed-price contracts.**

For independent oil and gas producers focused on generating and bringing on prospects for their investors, turnkey services are an ideal way to manage cash and mitigate the risks associated with drilling and completing wells in their portfolio. Commander assumes risk under a fixed cost, turnkey basis, which means our clients can get to first oil safely and faster. Our strength lies in the depth of our engineering and operations. No other turnkey company has our range of Gulf Coast geological expertise—knowledge that comes from drilling and completing over 2,000 wells on the Gulf of Mexico shelf and Texas/Louisiana inland waters. **It all comes down to trust.**

www.commanderdrilling.com

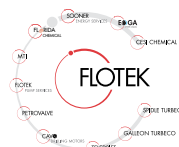
Commander Drilling Technologies LLC
10190 Katy Freeway, Suite 351
Houston, Texas 77043



ORANGE IS THE NEW GREEN



Flotek's citrus-based, environmentally friendly **CnF®** fracturing additives will revolutionize the way the world thinks about fracturing and will improve your production.



For more information contact
cesimkt@flotekind.com
or call
832-308-CESI (2374)

SPE-GCS 31st Annual Tennis Tournament

The 31st Annual Society of Petroleum Engineers Gulf Coast Section Tennis Tournament will be held on Thursday, November 6th & Friday, November 7th at The Houston Racquet Club located at 10709 Memorial Drive in Houston, Texas. Proceeds from the tournament benefit the SPE-GCS Scholarship Fund. In combination with other section functions, there have been 33 new scholarships for incoming college freshman studying petroleum engineering, math and sciences, and 70 renewed scholarships which include sophomores, juniors and seniors for their continued education in petroleum engineering. More than \$3 million dollars in scholarships have been awarded since 1963 to students through this program.

In 2013, we had a very successful tournament with over 115 players participating. Registrations and sponsorships raised \$55,000 in revenue. After tournament expenses, net proceeds of over \$39,600 dollars were contributed to the SPE-GCS Scholarship Fund.

Sponsors are a welcome and an essential part of making this event a success. All sponsors will be recognized in the tournament program and on the sponsorship billboard that is exhibited throughout the tournament. Please see the Sponsor Form for sponsorship levels. In-kind donations for ditty bags and door prizes are also accepted.

On behalf of the entire 2014 SPE-GCS Tennis Committee, we look forward to seeing everyone for two fun-filled days of tennis!

QUESTIONS

James Jackson
713-702-6795
James.Jackson
@Halliburton.com

LOCATION

The Houston Racquet Club
10709 Memorial Drive
Houston, TX 77024
713-464-4811
houstonracquetclub.com

START TIMES

Mixed Doubles
Begins Thursday
November 6th - 6:00 PM

Tournament Doubles
Begins Friday
November 7th - 9:00 AM

DEADLINE

October 31, 2014
Participation is limited!
Entries accepted on a
first-come, first-served basis.

Thursday / Friday
November 6 - 7

EVENT INFORMATION

There will be two flighted round robin events:
Mixed Doubles - Thursday evening, November 6th
Tournament Doubles - Friday, November 7th

The tournament doubles event is open to men and women and is a combined bracket. Partners may be of the same gender or mixed.

The committee will assist players who do not have a partner for any event.

FLIGHTING

Championship - Advanced Players
A - Regular & Advanced Players
B - Intermediate Players
C - Non-regular Players & Beginners

The SPE-GCS Tennis Committee reserves the right to allocate players to a different flight if necessary. Please rank yourself on the honor system.

WHAT TO EXPECT

Lots of tennis, meeting old friends and making new ones. Door prizes, T-shirts, awards, meals and beverages.

Thursday - Light dinner
Friday - Breakfast, lunch and snacks
Hit & Grab - Friday after lunch
Award presentations, door prizes & heavy appetizers - late Friday afternoon - 4PM

RULES OF ENTRY

The event is open to members, nonmembers, guests, and friends of SPE. The only restriction is that tennis professionals are not allowed.

REGISTRATION

Thursday, November 6th - 4:00 - 6:00 PM
Friday, November 7th - 8:30 - 9:00 AM

IMPORTANT NOTICE

All paid participants must wear their "Name Tags" during this event to have access to the food and drinks

ENTRY FEE INFORMATION

\$125.00 Per person - Fee covers Tournament and Mixed Doubles for an individual player.
\$50.00 for those only playing Mixed Doubles.
\$25.00 - Spouse/Guest (Not Playing)
Fees are due with entry form.

Entry Form can be found on page 14

SPE-GCS 31st Annual Tennis Tournament

ENTRY DEADLINE FRIDAY, OCTOBER 31, 2014

Name _____

Gender _____ Company _____

Address _____

City _____ State _____ Zip _____

Phone _____ Email _____

PLAYERS *(1 entry form per player)*

TOURNAMENT DOUBLES\$125 per person
 MIXED DOUBLES ONLY\$50 per person
 SPOUSE/GUEST/SPEAKER\$25 per person

YOUR RANK: Championship A B C

YOUR T-SHIRT SIZE: S M L XL XXL

FRIDAY TOURNAMENT DOUBLES

ARE YOU PLAYING TOURNAMENT DOUBLES?

Yes No

PARTNER'S NAME: _____

(Partner must send in own entry form)

PARTNER'S RANK: Championship A B C

DO YOU NEED A PARTNER? Yes No

THURSDAY MIXED DOUBLES

ARE YOU PLAYING IN MIXED DOUBLES?

Yes No

*(Additional \$50 if Mixed doubles partner is not playing in Tournament Doubles.
 \$50 MIXED ONLY)*

PARTNER'S NAME: _____

(Partner must send in own entry form)

PARTNER'S RANK: Championship A B C

METHOD OF PAYMENT

CHECK VISA MC AMEX DISC

Card Number _____ Expiration Date _____

(If paying with credit card please email entry to SPE-GCS Tennis c/o erin.chang@bp.com)

Name as it appears on card _____ Email Address _____

Name of sponsoring company *(If being sponsored)* _____ Email Address _____

Amount Enclosed/Amount to Charge *(Make checks payable to SPE-GCS Tennis)* _____

SPONSORS

Sponsors are a welcome and essential part of making this event a success. In recognition of their support, sponsors will be identified with special signage and privileges. 100% of the net proceeds raised by the tournament will be applied toward scholarships for the Society of Petroleum Engineers Gulf Coast Section College Scholarship Fund. All sponsors will have their company name on the tournament sponsor board and recognized in the tournament program according to sponsorship levels. Levels of available sponsorships are listed in the table below along with the number of players your company is entitled to register as part of your sponsorship. Separate entry forms are required for each player.

PLATINUM SPONSOR\$5,000
(Entitled to register 8 tournament players)

GOLD SPONSOR\$2,500
(Entitled to register 4 tournament players)

SILVER SPONSOR\$1,500
(Entitled to register 3 tournament players)

BRONZE SPONSOR\$1,000
(Entitled to register 2 tournament players)

COURT SPONSOR\$500
(Entitled to register 1 tournament player)

SPE-GCS also appreciates in-kind donations such as door prizes, gift certificates, ditty bag items, tennis balls, etc.

ProTechnics

After Frac Profile Technology

The industry's first after frac flow profile technology that simultaneously evaluates both frac clean-up and hydrocarbon production over time, providing critical information:

- Simultaneously Zonal Flowback
- Indexing Hydrocarbon Production to Geologic Horizons
- Evaluating Production Over Time
- Well Spacing Issues

From initial program design through analysis we will be there every step of the way lending the benefit of more than **200 years** of Completion and Reservoir Engineering experience to your project, ensuring you get timely and accurate results.

Optimize Production

FLOW PROFILERTM OIL

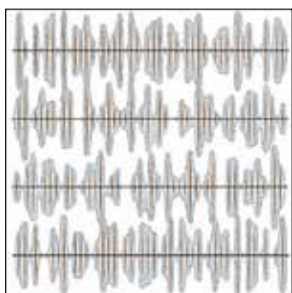


For more information about FlowProfiler, go to www.corelab.com/protechnics or give us a call at 713-328-2320

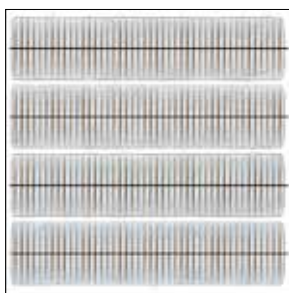
Maximize Production
+++ Increase Revenue



The most efficient field frac network starts with predictable frac spacing and predictable frac volume.



Unpredictable



Predictable

Plug-and-perf cannot deliver predictable, consistent frac results, and neither can open-hole completions. With Multistage Unlimited single-point injection, fracs initiate right where you plan them and proppant volume in every frac is exactly what you want. The result: an efficient field frac network for maximum reservoir connectivity.



ncfrac.com
+1 281.453.2222
info@ncfrac.com

NCS
energy services

©2014, NCS Energy Services, LLC. All rights reserved. Multistage Unlimited and "Leave nothing behind." are trademarks of NCS Energy Services, LLC. Patents pending.



Geosteering Solutions

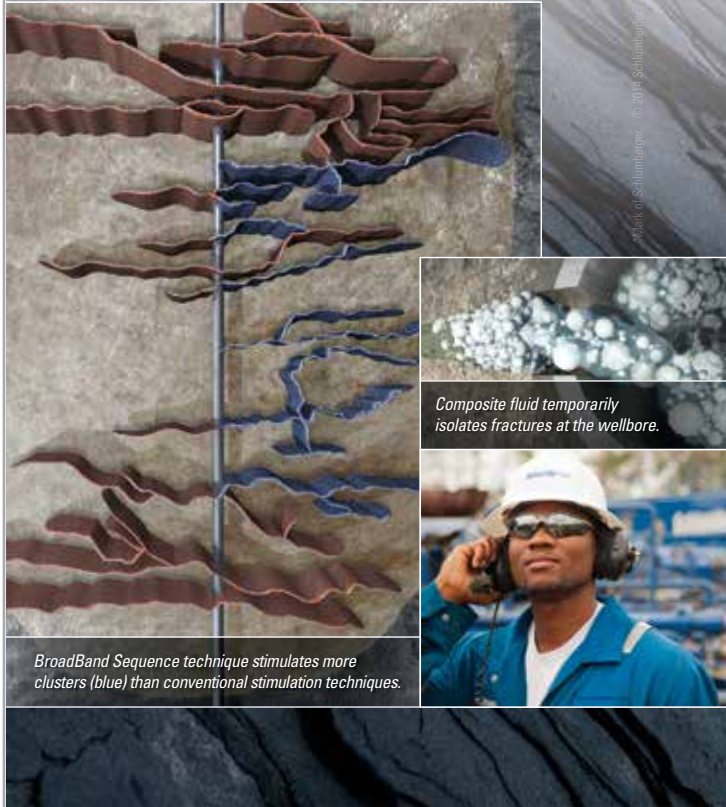
Upstream Solutions That Tackle Your Data-Challenged Well

petrolink

For more information visit www.petrolink.com/consulting

BroadBand Sequence

FRACTURING TECHNIQUE



Composite fluid temporarily isolates fractures at the wellbore.

BroadBand Sequence technique stimulates more clusters (blue) than conventional stimulation techniques.

Marathon Oil increases productivity in Eagle Ford Shale well by 21%.

The BroadBand Sequence* fracturing technique effectively stimulated perforation clusters that would not have produced by conventional techniques. Enabled by a proprietary engineered composite fluid of degradable particles and fibers, the BroadBand Sequence technique increased production by 21% over 115 days.

Read the case study at slb.com/BroadBand

Schlumberger

Committee

2014-2015 SPE Gulf Coast Section Kickoff

Our 2014-2015 SPE Gulf Coast Section Kickoff meeting will be held on Friday, August 22, 2014 at the Hilton Houston Westchase. This is an important opportunity to share contacts and best practices among our member volunteers and to learn from each other.

The "State of the Section" report will be given from 1-3 pm. Following that, special training will be held for the 2014-15 SPE-GCS Committee and Study Group Chairs, Vice-Chairs, Program Chairs, Publicity Chairs, Treasurers, and New Volunteers from 3 - 4 PM.

Please plan on joining us if possible. Everyone is welcome, and attendance is free of charge. Make sure to register as soon as possible so that we may arrange for participant materials and refreshments for all.

Here is a wonderful chance to learn about the SPE Gulf Coast Section activities for all of those who want to be involved and become contributors!

EVENT INFO

FRIDAY

8.22

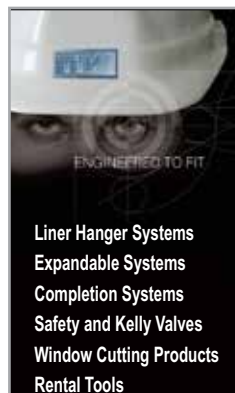
1:00 PM TO
4:00 PM

LOCATION

Hilton Houston
Westchase
9999 Westheimer
Houston, TX
77042

EVENT CONTACT

Kathy MacLennan
713-457-6813
kmaclennan
@spe.org



Innovative Custom-Engineered Drilling and Completion Solutions



A Pearce Industries Company

Serving the Oil and Gas Industry Since 1917

Tel: 713-729-2110 Fax: 713-728-4767 www.tiwttools.com

SPE Young Professionals - Volunteering at The Beacon

Please join SPE-GCS Young Professionals in their support of The Beacon, a nonprofit organization helping the poor and homeless populations of the Houston area. Since opening in 2007, The Beacon has grown from serving 80 clients per day to serving 600-800 clients daily in four core programs: The Beacon Day Center, Cathedral Clinic at The Beacon, Brigid's Hope at The Beacon, and Cathedral Justice Project at The Beacon. These four programs come together under one roof to provide meals, showers, laundry service, case management, medical and psychiatric care, pro bono legal services and pastoral care.

More than 85% of the services at The Beacon are operated by volunteers. On August 3rd, it'll be the SPE-GCS Young Professionals that answer the call to service. Please come and bring friends or family. For questions or inquiries, please contact Catalina Leal at Catalina.Leal@bakerhughes.com. To learn more about The Beacon, please visit www.Beaconhomeless.org.

EVENT INFO

SUNDAY

8.03

10:45 AM TO
2:00 PM

LOCATION

The Beacon
John S. Dunn
Outreach Center
1212 Prairie Street
Houston, Texas
77002

ORGANIZER

Catalina Leal

MORE

Free parking is
available at 500 San
Jacinto Street

THE MISSING PIECE TO MAXIMIZE YOUR PRODUCTION



You can't put together the puzzle without all the pieces. MicroSeismic's completions evaluation services and real-time microseismic monitoring help you fill in the blanks with recommendations on improved well spacing and stage length, frac coverage area, and analysis on how each well is completed. Our goal is to provide transparent results that you can rely on to maximize your production.

MicroSeismic

MicroSeismic.com/GCSPE | 866.593.0032

A Better Way to Frac

Take a look at the Binder MM Hybrid Frac Polymers...Field tested with Excellent Results

Feature	MM 200	Slickwater FR	Guar	MM 301
Drag Reduction Dose ⁽¹⁾	<0.2 gpt ⁽²⁾	0.6 gpt	NA	<0.2 gpt
Sand Suspension Dose	3-5 gpt	NA	6-9 gpt	3-5 gpt
Sand Loading/Stage ⁽³⁾	120-140%	None	100% ⁽³⁾	120-150%
Divalent/TDS ⁽⁴⁾	Up to 10% TDS	Varied	Low	Unlimited
Crosslinkable ⁽⁵⁾	Yes	No	Yes	Yes
Temperature Stability	275 F	275 F	200 F	300 F
Return Flow	Excellent	Good	Okay	Excellent
Shale Stability	Excellent	Good	Okay	Excellent
Other Chemicals ⁽⁵⁾	None Required	None Required	Multiple	None Required
Truckload Lead Time	Immediate	60 days	Immediate	Immediate

(1) Dose at 67+ percent drag reduction; (2) Instantaneous drag reduction 40% better than standard FR's at one-third the dosage; (3) 100% for guar as reference value; (4) Including salts, acids, bases, crosslinker, shale stabilizers, etc.- excellent for coil; (5) Any breaker except sodium bromate.

9391 Grogans Mill Road, Suite A-1
The Woodlands, TX 77380



(281) 419-9047 office
(281) 362-5612 fax



A Safe Biocide (Except for Bugs)



New from Universal Bacteria Specialist:
An environmentally friendly biocide with 1,450 ppm FACs.

ENVIROLYTE biocide offers you a safe, biodegradable alternative to toxic biocides for controlling bacteria in crude oil production and processing.

- 1,450 ppm free available chlorine and neutral 6.5 pH
- Can treat produced water before reuse
- Clears well of downhole micro-organisms
- Protects production equipment
- Eliminates microbial-induced corrosion

SAFE FOR PEOPLE. GOOD FOR PRODUCTION.



Find out more at
www.universalbacteria.com
or call 281.342.9555

E.P.A. Reg. No. 87636-2

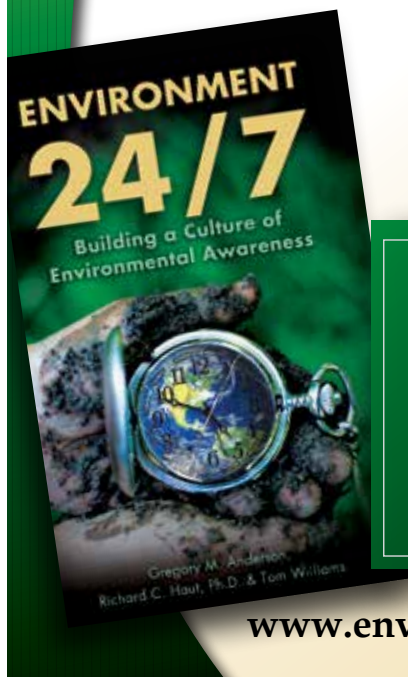
© 2014 Universal Bacteria Specialist (UCS1405/0614)

ORDER TODAY!

ENVIRONMENT 24/7

Building a Culture of
Environmental Awareness

by Gregory M. Anderson,
Richard C. Haut, PHD and
Tom Williams



Learn more and
order your copy
today!



www.environment247.org

EVENT RECAP

The 2014 SPE Sporting Clays Tournament was a great success with 120 teams participating. The event raised over \$50,000 for the SPE and Bright Light foundation. The new Cook Off Challenge met with rave reviews with Weatherford and Extreme Energy placing first and second. Plan to cook next year! Matt Jenkins, Noble Energy was the golf cart winner - Thanks Schlumberger. The winners this year received beautiful belt buckles - Thanks Boots & Coats. Last but not least I want to thank all the volunteers and committee members and the great sponsors that make this great event successful each and every year. [See you in June 2015 - Paul Conover](#)



Everyone was having fun



Caption for top of frame

Many Thanks to our Sponsors



Many thanks to United Rentals for keeping us cool



Just busting clays and loving it



CORROSION-RESISTANT COMPOSITE PIPELINE SOLUTIONS



Flexpipe Systems' composite linepipe products are flexible, reliable and customizable. We are the answer to your next pipeline project.



flexpipesystems.com

WELLSITE GEOSCIENCE SERVICES



**When time is money,
Wellsite Geoscience is
money well spent.**

Whether you're exploring a basin, producing a well or completing a shale play, time is money. That's why Weatherford Laboratories brings a suite of formation evaluation technologies right to the wellsite. Utilizing mud gas and cuttings, these technologies provide detailed data on gas composition, organic richness, mineralogy and chemostratigraphy in near real time. As a result, operators now have an invaluable tool to assist with sweet spot identification, wellbore positioning, completion design and hydraulic fracturing. We call it Science At the Wellsite. You'll call it money well spent.

SCIENCE AT THE WELLSITE™
www.weatherfordlabs.com

Formation Evaluation | Well Construction | Completion | Production



©2013 Weatherford. All rights reserved.

PATENTED **proNova**™ by TDE DRILLING PERFORMANCE

CREW PERFORMANCE MEASUREMENTS

AUTOMATIC OPERATIONS DETECTION

INVISIBLE LOST TIME DETECTION

281.755.7595
www.pronova-tde.com

VIBRATION TECHNOLOGY
LEADING THE INDUSTRY IN STUCK PIPE RECOVERY
INNOVATIVE TECHNOLOGY FOR REMOVING STUCK TUBULARS

- + WORKOVER
- + COMPLETIONS
- + DRILLING

Layne
Vibration Technology

www.layne.com

ELY

Global Hydraulic Fracturing Expertise

281-580-4616
www.elytrac.com

Integrated Energy Services ,Inc.

Robert Barba
Petrophysicist

Log Analysis
Completion Optimization

500 N. Capital of TX Hwy
Building 4-150
Austin, TX 78746
C: (713) 823-8602
F: (713) 583-9400
RBarba75@gmail.com

www.integrated-energy-services.com

Slider

Automated Directional Drilling

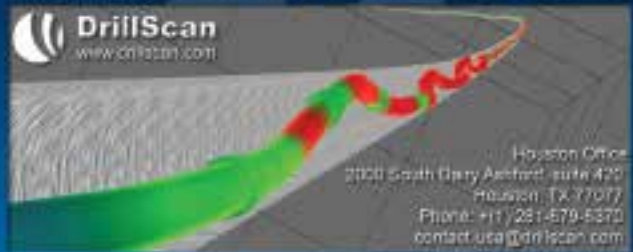
IMPROVE YOUR HORIZONTALS



- ON-BOTTOM TOOL FACE ORIENTATION
- INCREASED MOTOR LIFE
- INCREASED ROP & HORIZONTAL REACH CAPABILITY
- ELIMINATES ORIENTATION TIME LOSSES

slb.com/Slider

Advanced Drilling Mechanics Solutions



Software, Expertise, Services, Training

Deepwater Drilling Training

John Shaughnessy – SPE member – presents learnings from 36 years of experience: equipment, procedures, potential problems. Classes -

Deepwater Drilling: 5 days

Accelerated Deepwater Drilling: 2 Days

HTHP Drilling: 3 Days

Basic Drilling: 1 Day

Customized and In-House Classes Available

Class details at shaughnessydrillingtraining.com

PRODUCTIONER

USED BY EVERYONE,
FROM THE FIELD PUMPERS

ALL THE WAY UP TO MANAGEMENT

What our customers are saying:
"Productioner is a great data repository and analysis tool. Data entered in the field is immediately available to corporate office."

- FEATURES**
- FIELD DATA CAPTURE
 - ALLOCATIONS
 - REPORTS & GRAPHS
 - CUSTOMIZABLE TEMPLATES
 - FULLY MANAGED SERVICE

Mi4 Corporation
Ph: (713) 401-9584
sales@productioner.com
www.productioner.com



24/7 SUPPORT HOTLINE (866) 421-6665

PROFESSIONAL REGISTRATION REVIEW COURSES FOR PETROLEUM ENGINEERING

The Courses covers topics on the Texas State Board Petroleum Engineering Professional Examination.

HOUSTON COURSES:

(8:00 AM - 5:00 PM)

I August 18 thru 22, 2014

II October 6 thru 10, 2014

P: 405-822-6761 | E: bingwines@cox.net
winrockengineeringinc.com

DIRECTIONAL
AND
HORIZONTAL
DRILLING
SPECIALISTS



WWW.NOVADIRECTIONAL.COM



MUDSOLV NG

INTEGRATED FILTER CAKE
REMOVAL SERVICE

Optimize well productivity with uniform filter cake removal



The MUDSOLV NG[†] filter cake removal service enables simultaneous gravel packing or standalone placement for complete filter cake removal to optimize well productivity. The service integrates analytical tools and novel breaker chemistries to deliver the uniform removal of the toughest filter cake and related flow restrictions.

The new generation oil- and water-base breakers within the service are non-corrosive to completion hardware and exhibit an exceptional HSE profile, making them ideally suited for sensitive offshore and onshore environments.

miswaco.com/completions



[†]Mark of M-I L.L.C.

Delivering Award-Winning, Technology-Driven Engineered Solutions to the Oil & Gas Industry



World-Class Completions & Production Solutions

- Completion Fluids Products/Services
- Well Testing Equipment/Services
- Fluids Management



tetrtec.com

© 2014 TETRA and the TETRA logo are registered trademarks of TETRA Technologies, Inc. All rights reserved.

SUBJECT MATTER EXPERTS

DESIGN
ANALYSIS
TESTING



281.955.2900
www.stress.com

HOUSTON • CINCINNATI • NEW ORLEANS • BATON ROUGE • CALGARY

SPE Overview of Subsea Well Abandonment Training Course

This training course will provide a high-level overview of how to perform subsea well abandonments. It will take the learner step by step through the regulations, guidelines and different subsea well tree configurations; review vessels and riser systems available to safely conduct subsea well abandonment operations; and discuss lower and upper wellbore abandonment best practices, different deployment methods and downhole tool selections.

COURSE OBJECTIVES:

- Understand the plug and abandonment guidelines for subsea wells
- Review the different floating vessels and riser systems available for subsea intervention
- Step by step understanding of subsea Well Plug & Abandonment methodology
- Understand the limitations of today's technologies

BART JOPPE, GLOBAL BUSINESS DEVELOPMENT MANAGER FOR WELL PLUG & ABANDONMENT, BAKER HUGHES

Bart Joppe is global business development manager for well plug & abandonment at Baker Hughes in Houston. He is responsible for technical, commercial and operational support for the company's well abandonment services. In his 16 years with Baker Hughes, Joppe has performed operational, technical sales and business development roles in Europe, the USA and the Middle East. His technical expertise includes fishing and milling services, thru-tubing intervention and wellbore isolation. He has served as a project manager for new technology development and as an instructor for wellbore intervention training programs.

DARIN HILTON, COMMERCIAL MANAGER FOR WELL OPS US HELIX ENERGY SOLUTIONS GROUP

Darin Hilton currently serves as commercial manager for well ops US and has worked for Helix Energy Solutions Group for over 5 years. He has over 18 years of experience in the offshore industry. Hilton earned his BS in nautical science with a minor in marine engineering from Maine Maritime Academy. He holds a USCG Master Unlimited Tonnage license with OIM unrestricted endorsement.

EVENT INFO

MONDAY

09.22

8:00 AM TO
5:00 PM

MEMBERS

\$750

NON-MEMBERS

\$950

EVENT CONTACT

Amy Chao, SPEI
972-952-9331
achao@spe.org

LOCATION

Houstonian Hotel
111 North Post Oak
Houston, TX
77024



Technical Documentation Development and Management Consulting



Documentation help = more available engineering time

Technical Writing

- + Develop content
- + Multiple authors – consistent voice
- + Formatting, grammar & readability
- + Develop / edit graphics

Management Consulting

- + Documentation & project management
- + Procedures, processes & workflow
- + RFPs, RFQs & contract management

*- Quick turnaround
- On-demand resource
- Turnkey publication*

ZAETRIC®
www.zaetric.com



VIKING ENGINEERING, L.C.

CRITICAL WELL ENGINEERING CONSULTING SERVICES

VIKING'S TEAM OF HIGHLY TRAINED PETROLEUM PROFESSIONALS LEND THEIR EXPERIENCE TO CREATIVE WELL DESIGNS.

WE CAN HELP PLAN AND EXECUTE YOUR TOUGH WELLS.

- PETROLEUM CONSULTING
- HPHT WELL DESIGN
- APB ANALYSIS
- PROJECT MANAGEMENT
- FAILURE ANALYSIS
- TRAINING

VISIT OUR WEBSITE: WWW.VIKINGENG.NET
OR CALL: (281) 870-8455 IN HOUSTON

www.intertek.com



Upstream Services

6700 Portwest Drive | Houston, TX 77024

713.479.8400

westportservices@intertek.com

PREMIUM CONNECTIONS

Meeting your exacting requirements.

SealLock® | WedgeLock®
TKC™ | TS™
connection technology



HUNTING

www.huntingplc.com

© 2013 Hunting

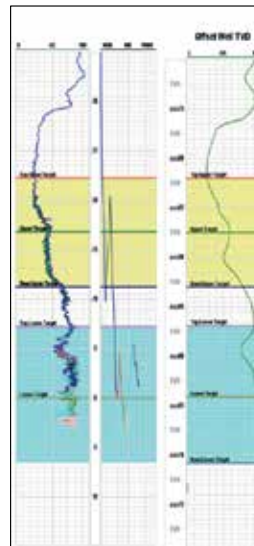
DEDICATED TO DELIVERING STRATEGIC VALUE FOR OUR CLIENTS.



We are an independent, multi-disciplined technical consultancy servicing the international oil and gas industry.

- OPERATIONS ASSURANCE
- SUBSEA PRODUCTION REALIZATION
- FLOW ASSURANCE
- SEPARATION SYSTEMS
- GAS TREATMENT & TRANSPORT
- PRODUCED WATER MANAGEMENT
- SAND & SOLIDS MANAGEMENT
- CONTAMINANTS MANAGEMENT
- CHEMICAL MANAGEMENT
- PROCESS/PRODUCTION OPTIMIZATION
- PROCESS TROUBLESHOOTING
- OPERATIONS PERFORMANCE STRATEGY (OPS)
- SYSTEMS AWARENESS TECHNICAL TRAINING

MAXIMIZING PERFORMANCE THROUGH OPERATIONAL EXCELLENCE
contact@maxoilsolutions.com • www.maxoilsolutions.com



Geosteering Services

Highly qualified personnel with 20+ years DD & LWD experience

24/7 Real-time monitoring or reports from LAS files

Proprietary software

Geosteering Software

TST interpretation for GR only measurements

Image displays / interpretation of azimuthal GR, resistivity or density measurements

Resistivity modelling / interpretation for LWD propagation resistivity

Software sales, training and technical support

info@geosteering.com

Call 281 573 0500

SPEI SPE SUBSEA WELL ABANDONMENT WORKSHOP

TUESDAY - WEDNESDAY
SEPTEMBER 23-24 7:00 AM - 4:00 PM

The permanent abandonment of subsea oil and gas wells around the world represents an increasingly significant challenge and liability for the E&P industry. Historically, wells have been designed, constructed and operated using methods, techniques and materials suitable for long-term production, with less emphasis and forethought to well abandonment operations.

This SPE workshop will be an open venue to discuss and learn about the technical, operational and liability challenges faced by the industry. As an informal gathering of operators, service providers and regulators, this workshop will provide a unique opportunity for the exchange of information, ideas and solutions that may be applicable today.

Location **THE HOUSTONIAN HOTEL**

111 North Post Oak Lane, Houston, TX 77024

Event Contact **AMY CHAO, SPEI**

972-952-9331 / achao@spe.org

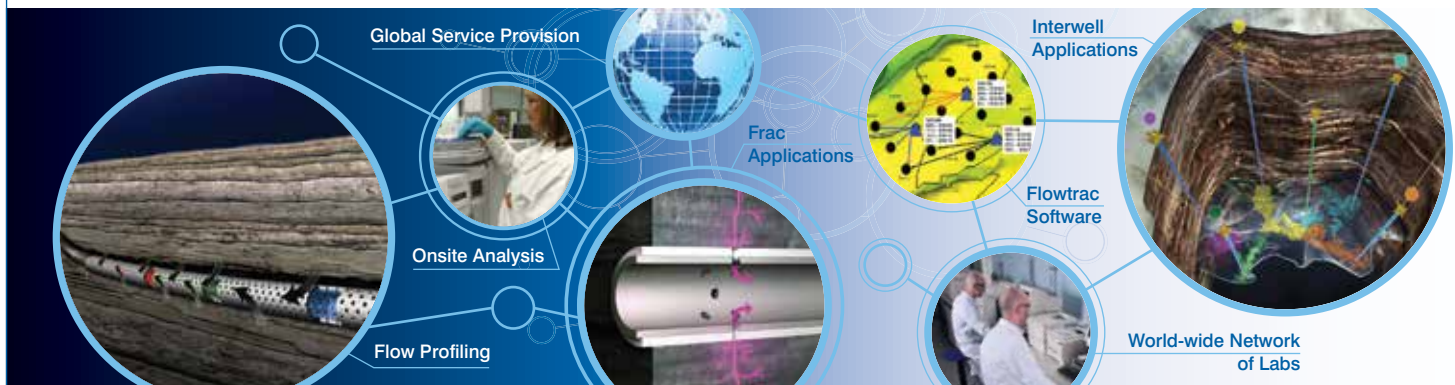
MEMBERS \$825 UNTIL AUG 22, THEN \$925

NON-MEMBERS \$1,025 UNTIL AUG 22, THEN \$1,125

Tracerco

Providing Insight Onsite

Know Production. No Surprises.



Reservoir Characterisation Using Tracer Technology

- Expertise in waterflood, injection gas, CO₂ and EOR chemical tracer applications
- Long term wellbore fluid inflow characterisation using no wires, fibres or well intervention
- Unconventional stage production measurement using Tracerco patented technology
- Global network of laboratories and operational capabilities providing local service provision to key oil and gas regions

Tracerco, 4106 New West Drive, Pasadena TX 77507 USA

Tel: +1 281 291 7769 Toll Free: 1 800 288 8970

www.tracerco.com/reservoir-characterisation

Reservoir
Technologies 

SPE GULF COAST SECTION DIRECTORY

YOUR GUIDE TO YOUR ORGANIZATION LEADERS

Gulf Coast Section Officers – 2014-2015

CHAIR

Jeanne Perdue, Occidental
713-215-7348
jeanne_perdue@oxy.com

VICE CHAIR

Ivor Ellul, RPS Knowledge Reservoir
713-595-5100
iellul@knowledge-reservoir.com

SECRETARY

Sunil Lakshminarayanan, Weatherford
713-849-1861
sunil.lakshminarayanan@weatherford.com

TREASURER

Lucy King, Miller & Lents
713-308-0343
lking@millerandlents.com

VICE TREASURER

Alex McCoy, Occidental
713-366-5653
alexander_mccoy@oxy.com

CAREER MANAGEMENT

Patty Davis, PetroSkills
832-426-1203
patty.davis@petroskills.com

COMMUNICATIONS

Subash Kannan, Anadarko
832-636-7679
subash.kannan@anadarko.com

COMMUNITY SERVICES

Amy Timmons, Weatherford
713-836-6563
amy.timmons@weatherford.com

EDUCATION

Gabrielle Guerre, Ryder Scott
713-750-5491
gabrielle_guerre@ryderscott.com

MEMBERSHIP

Xuan VandeBerg
832-444-5143
stem.fields@gmail.com

PAST CHAIR

Mike Strathman, Trinity Group
713-614-6227
mike-strathman@att.net

PROGRAMS

David Tumino, Murphy Oil
281-717-5123
tuminospe@hal-pc.org

SOCIAL ACTIVITIES

Jim Sheridan, Baker Hughes
281-432-9209
jim.sheridan@bakerhughes.com

TECHNOLOGY TRANSFER

Carol Piovesan, APO Offshore
281-282-9291
cpiovesan@apooffshore.com

YOUNG PROFESSIONALS

Pavitra Timbalia, ExxonMobil
832-624-0505
pavitra.a.timbalia@exxonmobil.com

DIRECTORS 2013-15

Trey Shaffer, ERM
281-600-1016
trey.shaffer@erm.com

John Lee, Univ. of Houston
713-743-4877
wjlee3@uh.edu

Deepak Gala, Shell
281-544-2181
deepak.gala@shell.com

DIRECTORS 2014-16

Jenny Cronlund, BP Exploration
281-366-8966
jenny.cronlund@bp.com

Torrance Haggerty, Battelle Memorial Inst.
713-260-9640
haggertyt@battelle.org

Eric Kocian, ExxonMobil
713-656-4271
eric.m.kocian@exxonmobil.com

SPE GULF COAST NORTH AMERICA REGIONAL DIRECTOR

Bryant Mueller, Halliburton
281-818-5522
bryant.mueller@halliburton.com

Committee Chairs

AWARDS

Jeremy Viscomi,
Petroleum Technology Transfer Council
785-864-7396
jviscomi@pttc.org

CONTINUING EDUCATION

Nii Ahele Nunoo, NOV
507-304 5416
Nii.Nunoo@nov.com

ESP WORKSHOP

Noel Putscher, Newfield
281-674-2871
nputscher@newfield.com

GOLF CO-CHAIRS

Cameron Conway, KB Machine
281-217-0660
cconway@kb-machine.com

Robin Smith, Insight Investments
713-907-1694
rsmith@insightinvestments.com

INTERNSHIPS

Gabrielle Guerre, Ryder Scott
713-750-5491
gabrielle_guerre@ryderscott.com

NEWSLETTER

John Jackson, Unimin Energy
713-998-3121
editor@spgcs.org

SCHOLARSHIP

Tanhee Galindo, Catalyst Oilfield Services
832-693-9010
gcs-scholarship@spemail.org

SPORTING CLAYS

Paul Conover, NOV
713-346-7482
paul.conover@natoil.com

TECHNOLOGY TRANSFER

Carol Piovesan,
APO Offshore
949-232-6353
cpiovesan@apooffshore.com

TENNIS

James Jackson, Halliburton
713-366-5704
james.jackson@halliburton.com

WEB TECHNOLOGY

Shivkumar Patil, Aker Solutions
713-369-5352
Shivkumar.Patil@akersolutions.com

SECTION MANAGER

Kathy MacLennan, SPE-GCS
713-779-9595 x 813
kmaclennan@spe.org

Study Group Chairs

BUSINESS DEVELOPMENT

Steve Mullican, Grenadier Energy Partners
281-907-4120
smullican@grenadierenergy.com

COMPLETIONS & PRODUCTION

Mark Chapman, CARBO Ceramics
281-921-6522
mark.chapman@carboceramics.com

DIGITAL ENERGY

Rick Morneau, Morneau Consulting
281-315-9395
RickMorneau@outlook.com

DRILLING

Ernie Prochaska, NOV Downhole
832-714-3842
ernie.prochaska@nov.com

GENERAL MEETING

Raja Chakraborty, Shell
281-544-2148
Raja.Chakraborty@shell.com

HEALTH, SAFETY, SECURITY, ENVIRONMENT AND SOCIAL RESPONSIBILITY

Trey Shaffer, ERM
281-600-1016
trey.shaffer@erm.com

INTERNATIONAL

Owen Jones, ExxonMobil
Development Company
832-624-2019
owen.jones@exxonmobil.com

NORTHSIDE

Robert Estes, Baker Hughes
713-879-4414
robert.estes@bakerhughes.com

PERMIAN BASIN

Amy Timmons, Weatherford
713-836-6563
amy.timmons@weatherford.com

PETRO-TECH

Jessica Morgan, Blackstone Minerals
713-929-1633
jmorgan@blackstoneminerals.com

PROJECTS, FACILITIES, CONSTRUCTION

Chris Shaw, Shell
281-544-6796
C.Shaw@shell.com

RESEARCH & DEVELOPMENT

Skip Davis, Technology Intermediaries
281-359-8556
skdavis@technologyintermediaries.com

RESERVOIR

Rafael Barroeta, Occidental
713-366-5356
rafael_barroeta@oxy.com

WATER & WASTE MANAGEMENT

Kira Jones, Consultant
kirarjones@gmail.com

WESTSIDE

Sandeep Pedam, ConocoPhillips
(832) 486-2315
sandeep.pedam@conocophillips.com

CONNECT INFORMATION

NEWSLETTER COMMITTEE

CHAIRMAN | John Jackson
editor@spegcs.org

AD SALES | Pat Stone
starlite1@sbcglobal.net

BOARD LIAISON | Subash Kannan

NEWSLETTER DESIGN | DesignGood
designgoodstudio.com

SPE HOUSTON OFFICE

GULF COAST SECTION MANAGER
Kathy MacLennan | kmaclennan@spe.org

GCS ADMINISTRATIVE ASSISTANT
Sharon Harris | sharris@spe.org

HOURS & LOCATION

10777 Westheimer Road, Suite 1075
Houston, Texas 77042
P 713-779-9595 | F 713-779-4216
Monday - Friday 8:30 a.m. to 5:00 p.m.

PHOTO SUBMISSIONS

We are looking for member photos to feature on the cover of upcoming issues! Photos must be at least 9" by 12" at 300 DPI. Email your high resolution picture submissions to: editor@spegcs.org

CHANGE OF ADDRESS

To report a change of address contact:
Society of Petroleum Engineers
Member Services Dept.
P.O. Box 833836
Richardson, Texas 75083-3836
1.800.456.6863 | service@spe.org

CONTACT

For comments, contributions, or delivery problems, contact editor@spegcs.org.



Dyna-Drill
Manufacturers of
Drilling Motor Components

- Mud Motor Power Sections (Sizes: 2 7/8" to 11 1/2")
- Matrix-3[®] Coated Bearings
- Coil Tubing Power Sections (Sizes: 1 11/16" to 3 3/4")
- Precision Machining

www.dyna-drill.com

Power That Lasts™ 

Why can Weatherford deliver more real time data at the wellsite than any other mudlogging company?



Tim has cabin fever.



**EXCELLENCE
FROM THE
GROUND UPSM**

Our Global Operations Manager for Surface Logging Systems, Tim, is all smiles these days. That's because he and his team recently designed a new state-of-the-art mudlogging cabin. The spacious interior makes room for more laboratory services at the wellsite. Now exploration companies have access to more data in real time, so they can make better decisions faster. It's one more way Weatherford Mudlogging is committed to Excellence from the Ground Up.

SURFACE LOGGING SYSTEMS

www.weatherford.com/surfacelogging
mudlogging.services@weatherford.com



NON-PROFIT
ORGANIZATION
U.S. POSTAGE
PAID
PERMIT NO. 6476
HOUSTON, TX

**SOCIETY OF PETROLEUM ENGINEERS
GULF COAST SECTION**

10777 Westheimer Road
Suite 1075
Houston, TX 77042

August 2014 CALENDAR

SUNDAY	MONDAY	TUESDAY	WEDNESDAY	THURSDAY	FRIDAY	SATURDAY
					1	2
Young Professionals Volunteer Event	3	4	Projects, Facilities & Construction Session 6	6	7	8
10	11	12	13	Board of Directors	15	16
17	Water & Waste Management	19	20	Health Safety & Environment	Board of Directors Kick-Off	23
24	25	26	Business Development	Membership Extravaganza	28	29
			27	28	29	30