



Gulf Coast Section

JULY
2014

CONNECT

SPE GULF COAST SECTION NEWSLETTER

2013-2014

SPE-GCS Annual Report Summary

P. 6 - 13

Awards Banquet Photos

EVENT RECAP P. 31 - 33

SUMMER LECTURE SERIES

PROJECTS FACILITIES & CONSTRUCTION P. 17 - 27

ROUGHNECK CAMP

YOUNG PROFESSIONALS P. 29

SPEGCS.ORG



CHAIR'S CORNER

MIKE STRATHMAN
2013-2014 SPE-GCS Chair

July is the end of the SPE-GCS 2013-2014 program year. I would personally like to thank the outgoing Board of Directors for their service. Each of them has made sacrifices and shared their expertise to keep our Section vibrant and beneficial to our members. I would also like to thank their companies for affording them the time from their “regular jobs” to serve the industry and the community through SPE.

OUTGOING DIRECTOR	COMPANY
Steve Baumgartner, Past Chair	Marathon Oil
David Flores, Secretary	Consultant
Kevin Renfro, At Large	Anadarko
Wolfgang Deeg, At Large	Shell
Valerie Walker, Communications	Anadarko

I would also like to thank the Study Groups and Committees for their leadership and service. This is where the technology sharing and community service really happens. It was a good year on many levels for the Section. We had more than 130 technology-related events, and more than 7000 people attended them. That in itself is good, but the content and delivery methods showed creativity and enthusiasm, which made for great results. Here are some key examples:

The Business Development Study Group actively engaged with the Young Professional Committee to start discussion with the financial community. They initiated a blog to exchange information on a more continuous basis.

The PF&C Study Group tried a new schedule for their events to make them more accessible to younger members and allow time for discussion and networking. They set up a series of events based on a common theme over several weeks.

The HSSE-SR Study Group joined with the Young Professional Committee to host the first ever movie night featuring a documentary on fracking and a panel of experts discussing it.

These new approaches are innovative means towards enhancing the main mission of SPE to transfer and share technology ideas about oil and gas.

Due to excellent leadership and planning, our social events featuring Tennis, Sporting Clays and Golf, continue to over-deliver and provide a wonderful experience for participants. Thanks to them and all who attended and sponsored these events.

In this issue of the Connect Newsletter are many facts from the GCS Annual Report submitted to SPE. Read them and give consideration to getting more involved. We are a volunteer organization and there is always room for energetic and creative people

The end of July marks the beginning of the new program year. We welcome the new Directors who will serve the Section in 2014-2015.

INCOMING DIRECTOR	COMPANY
Dr. Ivor Ellul, Vice Chair	RPS Knowledge Reservoir
Sunil Lakshminarayan	Weatherford International
Jenny Cronlund, At Large	BP
Eric Kocian, At Large	ExxonMobil
Torrance Haggerty, At Large	Battelle Memorial Institute
Subash Kannan, Communications	Anadarko

I officially pass the Chair's role to the very capable **Jeanne Perdue**. She will bring her considerable skills and experience to the mission of SPE-GCS. All the best, Jeanne!

THOUGHT YOU SHOULD KNOW

The Connect Newsletter for 2014-2015 has a goal of including more pictures of members, either working in the field/office or volunteering at GCS sponsored events. Our goal is to emphasize the personal touch of all that we do. You can help achieve that goal by contributing photos. Please identify the people, location and source (we do not want anything which may have copyright issues). Send them to editor@spegcs.org. Thanks for helping to improve our publication.

Thank you for being involved with the section's activities – it makes the GCS a better organization for all members. I personally welcome your comments and ideas to help the SPE Gulf Coast Section serve you and your career better. Please contact me at mike-strathman@att.net.

FEATURES

July 2014

ABOUT THIS ISSUE

Last year, we launched our first ever July Issue making our newsletter a full twelve issues each year. Because of SPE-Gulf Coast Section's expanding membership and the support the *Connect* has received from advertisers, readers and members, we will continue to provide you with this issue as a closing to our section's year. As many of our events wind down in the summer, the July issue is smaller. However, the content is still very important, as our main feature is presenting results from our Annual Report. We hope you will take the time to read through this valuable information and continue to provide feedback to your organization's leaders.

Thank you to all our advertisers who help make this publication possible. As we continue to grow the *Connect* Newsletter, we hope that you, our reader, will continue to support these businesses. A special thank you goes out to the many volunteers involved in the Gulf Coast Section: you exemplify the values of our section and help make our organization a leader in the industry.

Next month we look forward to launching an updated newsletter featuring a fresh new look; stay tuned!

STUDY GROUPS

PROJECTS FACILITIES
& CONSTRUCTION SUMMER
LECTURE SERIES

7/2/2014

Floating Production System Host Selection

P. 17

7/9/2014

Introduction to FPSOs

P. 19

7/16/2014

*Design and Construction of Tension
Leg Platforms*

P. 21

7/23/2014

Introduction to Spars

P. 23

7/30/2014

Semi-submersible FPS Design Considerations

P. 25

8/6/2014

Buoyant Tower™

P. 27

COMMITTEES

YOUNG PROFESSIONALS
ROUGHNECK CAMP

7/17/14

P. 29

2013-014 ANNUAL REPORT HIGHLIGHTS

P. 6-15

IN EVERY ISSUE

SPE-GCS MEMBERSHIP REPORT

P. 5

SPE-GCS DIRECTORY

P. 34-35

THU
July
10

7:30 AM TO 10:30 AM

BOARD OF DIRECTORS MEETING

LOCATION

SPE Houston Office
10777 Westheimer Rd.
Suite 1075
Houston, TX 77042

EVENT CONTACT

Sharon Harris
713-457-6821 EXT. 821
713-779-4216 FAX
sharris@spe.org

Trust your parachute?



one reliable solution. Entero[®] MOSAIC[™]

With over ten years of continuous progress and innovation for corporate reserves and evaluations, Mosaic has the product stability and client responsiveness that E&P companies have come to expect. Discover what it's like to have a system and team you can depend on to achieve your end goal.

- Better Productivity
- Higher Efficiency
- Faster Speed
- Trusted Information

Expect More. Accomplish More. Learn More at www.entero.com/mosaic
Contact Jill Wyatt at: (713) 446-4633

entero[®]
energy software

SPE-GCS MEMBERSHIP REPORT

May 2014

MAY 2014

Total: 14,519

YP: 4,380

APRIL 2014

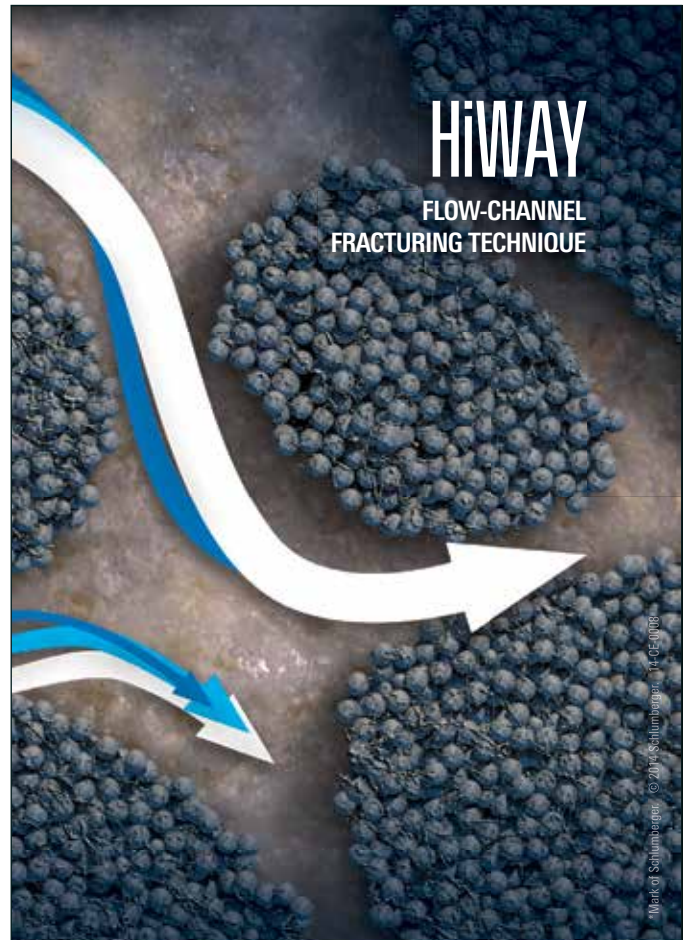
Total: 13,536

YP: 2,753

SPE-GCS Members	MAY		APRIL	
	Total	YP	Total	YP
New Members	29	14	50	N/A
Reinstated	N/A	N/A	N/A	N/A
Transferred to Section	1	N/A	9	1
Unpaid	3,581	1,329	3,656	1,332

Student Members	MAY		APRIL	
	Paid	Unpaid	Paid	Unpaid
Texas A&M	937	234	683	245
Rice	60	26	34	26
HCC	68	20	43	23
UH	479	191	275	197
Total	1,544	471	1,035	491

Total Paid/Unpaid	16,063	4,052	14,571	4,147
% Paid	79.9%		77.8%	



Increase production while saving water, proppant, and time.

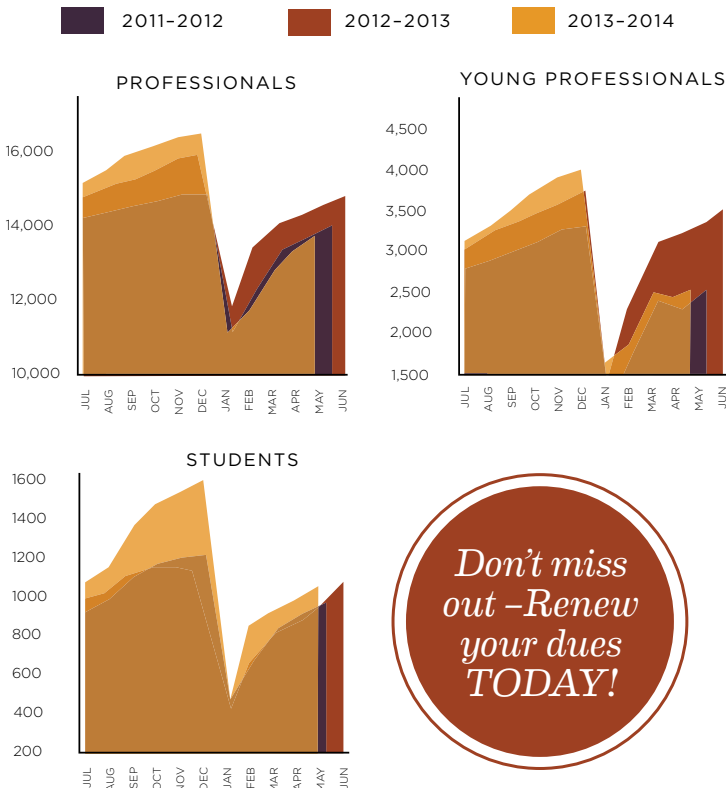
The HiWAY* flow-channel hydraulic fracturing technique creates infinitely conductive pathways within the proppant pack, enhancing productivity and operational efficiency. On average, jobs using the HiWAY technique increase production 20%, use 40% less water, and consume 60% less proppant.

To date, the HiWAY technique has been used in more than 21,000 stages. It has helped

- conserve over 900 million gallons of water
- save 2.8 billion pounds of proppant
- prevent more than 1,000 screenouts
- eliminate over 125,000 road journeys.

Find out more at
slb.com/HiWAY

Schlumberger



Don't miss out - Renew your dues TODAY!

2013-2014

ANNUAL REPORT SUMMARY

THE 2013-2014 ANNUAL REPORT HIGHLIGHTS THE MANY SUCCESSES THE SPE-GCS SECTION HAS SEEN THROUGHOUT THE YEAR. FROM INCREASING OUR MEMBERSHIP TO ENGAGING OUR MEMBERS MORE ACTIVELY IN STUDY GROUPS AND SECTION EVENTS, WE HAVE HAD A SUCCESSFUL YEAR BY ALL MEASURES. OUR SUCCESS IS A RESULT OF OUR MEMBERS' HARD WORK, DEDICATION TO THE INDUSTRY, AND WILLINGNESS TO EXPLORE NEW WAYS TO CONNECT AND SHARE KNOWLEDGE WITH EACH OTHER. THE OVERALL RESULT IS A PROFESSIONAL ORGANIZATION THAT CONTINUES TO EVOLVE TO RESPOND TO THE CHANGING NEEDS OF ITS MEMBERS AND THE OIL AND GAS INDUSTRY.

SPE-GCS MEETINGS BY THE NUMBERS

4

DISTINGUISHED LECTURERS

114

STUDY GROUP MEETINGS

10

TECHNICAL PRESENTATIONS

6

1-DAY WORKSHOPS

7,494

ATTENDEES

INNOVATIVE TECHNICAL DISSEMINATION

OVER THE LAST 12 MONTHS, OUR SECTION IMPLEMENTED A NUMBER OF NEW WAYS TO MOVE INFORMATION AND CONNECT OUR MEMBERSHIP.

1

BUSINESS DEVELOPMENT STUDY GROUP

Our mission is to encourage Young Professional participation in the Business Development Study Group and become the leading Study Group in participation and scholarship donations. This year we effectively increased interest and participation in our group; the average event attendance was up from 74 in 2012-13 to 115 in 2013-14. We also established a blog that will kick off in June 2014. The biggest challenge was to define the necessary liability protection to put the blog in place, given that there was no precedent. However, the section was very supportive in doing so. We established a Season Pass program (39 signed up 2013-14), initiated the Square Pay process to take credit card payments at the events, and increased scholarship donations from \$9,000 in the 2012-13 program year to \$13,500 this year. We have been sourcing new volunteers from our involvement in the Young Professional program to encourage their participation. We had a kick-off social with the YP's on August 28, 2013 in Houston at the beginning of the season to encourage their participation during the year. This event had 200 attendees. We also established a mentorship program with YPs that has over 20 participants, and now have four new YP members on our committee.

2

GENERAL MEETING STUDY GROUP

In addition to the section monthly hardcopy newsletter and the section monthly electronic newsletter, we also sent a monthly email about the General Meeting to all SPE members with a business address in the downtown Houston area (both ZIP codes). On several occasions, we sent email announcements about our meetings, using our "frequent attendees" list. Our events and registration details are posted to the SPE-GCS website. We have not used social media.

3

PERMIAN BASIN STUDY GROUP

Permian Basin Study Group's mission is to disseminate and exchange technology concerning the development of oil and gas resources specific to the Permian Basin. We provide opportunities for individuals to gain technical competence in the topic matter presented at our luncheon meetings. We will continue to educate and mentor high school students on STEM initiatives. This year we conducted our second annual SG meeting with high school students. Future speakers include a University professor and an SPE member presenting on Petroleum Engineering.

5

R&D STUDY GROUP

The R&D Study Group hosted a YP Career Panel for YPs in R&D, new technology and product development. We had 75 attendees. The panel consisted of four senior executives from operating companies. Comments were very positive for the group, and the event exceeded expectations. At the end of the panel discussion we asked the YPs in the room the following question: What do you need from the industry (companies and SPE) to be successful? The answers included:

- 1) A focus from their management on promoting additional schooling, industry education and entrepreneurship
- 2) The ability to own their own projects sooner rather than later
- 3) More open mentality concerning new innovations that can be introduced into the industry
- 4) Training for writing SPE abstracts, papers, etc.
- 5) More definition for the role of mentors

7

WATER AND WASTE MANAGEMENT STUDY GROUP

The Water and Waste Management Study Group worked to ensure succession for the positions on the board, especially chair, vice chair, and treasurer. The group expanded topics to address study group attendee requests and reached out to more women as both members and speakers. The group has four goals for 2014:

- 1) Host three technical sessions in 2014; George King on May 19, 2014 was the first
- 2) Fill all main positions on the study group board of directors
- 3) Improve attendance of study group luncheons
- 4) Address the dearth of female speakers on the speaking circuit

9

HSSE-SR STUDY GROUP

The HSSE-SR and Young Professionals co-hosted an Innovative Meeting: a Night at the Movies Featuring "FrackNation" followed by an expert panel. We are planning a similar event in 2015 and we are considering adding another study group to the collaboration.

4

PF&C STUDY GROUP

We successfully employed an after-work-hours Technical Session Series based around an overarching theme. The concept started in July 2013, continued in April 2014, and will be implemented again in July 2014. This schedule minimized disruption of potential attendees' work schedules. The goal is to attract more young professionals, and increase attendance and networking. One challenge to overcome is getting operator speakers due to legal reviews and releases to speak. The series forces us to plan further in advance and make that process easier for potential speakers. Advanced planning has made those approvals easier and we are getting higher quality speakers.

6

RESERVOIR STUDY GROUP

The Reservoir Study Group selected technical talks based on attendee feedback, including renowned speakers/distinguished lecturers. Additionally, the study group expanded the reservoir forum capacity to 225 attendees. The group also succeeded in obtaining nine corporate sponsors for the forum. The group also encouraged more student involvement by subsidizing pricing for lunch meetings and forums, and encouraging students to present posters at the forum.

8

DRILLING STUDY GROUP

The Drilling Study Group worked to improve proactive programs scheduling, leadership development, and progression plans. We plan to set new committee/group assignments before the end of June 2014. Current members are struggling to sign up or take on more responsibility next year as their industry activity is overloaded; each member is pressed to find time to volunteer. Venue selection at this time is split between the Petroleum Club and Greenspoint Club. Both of these venues have an uncertain future with the move of ExxonMobil. We will plan to adjust accordingly. Operator involvement has become very challenging. Having a panel during our symposium was successful; however, it has been difficult to find operators to present at our monthly luncheons. Paper approval to present appears to be the biggest issue. Without the operator community involved, our attendance is down as much as 50%.

10

WEB TECHNOLOGY

The Communication team has begun to utilize the SPEI eNewsletter tool to reach out to the member base in the Gulf Coast Section.

PLANNING

LONG-TERM GOALS:

1

NEWSLETTER

The Newsletter Committee helped lower the overall monthly cost to produce the newsletter by an average of \$4,000 a month. We also have reached out to each study group to help bring more attention to them in order to increase their attendance. We now offer a newsletter every month, as opposed to taking one month off in the summer. The Newsletter Committee would like every cover of the magazine to be a personal picture taken out in the field. We have had only one submission for the 2013-2014 calendar year.

2

YOUNG PROFESSIONALS

The Young Professional Committee plans to utilize the recently developed SPE-GCS YP Mobile Application to reach out to more YPs in our section and increase our 3,900+ YP members' awareness of YP events and activities through improved and more effective communication methods, including YP App, Social Media channels (Facebook, LinkedIn, Twitter, SPE Connect), and email blasts to our members.

3

COMMUNITY SERVICES

Community Services aims to provide SPE sponsorship to STEM initiatives in the Houston area.

5

WEB TECHNOLOGY

The Web Technology Committee aims to establish an effective eNewsletter tool for the Gulf Coast Section.

4

TECHNOLOGY TRANSFER

The Technology Transfer committee goal is to introduce technology from outside the oil and gas industry that will have a positive effect on the industry.

PLANNING

SHORT-TERM GOALS

1

NEWSLETTER

Our short term goal was to find a new printer for the magazine (achieved in December). We have increased our monthly page count from an average of 28-32 pages to an average of 36-40 pages. This is a result of more groups using the Newsletter as their primary way of getting out information to the Gulf Coast Section. We have also included an event recap (pictures of activities) in every edition of the newsletter to bring more attention to the Section's events.

2

YOUNG PROFESSIONALS

The Young Professionals' short terms goals included:
1) Establish YP Volunteer Program that would allow YPs to participate in more community outreach volunteer events
2) Enhance the Executive Club Program to recognize and encourage more University/ College student participation in YP activities and more recognition for companies supporting YP event participation
3) Encourage and organize joint events with other professional organizations and GCS Study Groups, including SWE, TYP, YPE, NSBE, GCS HSSE-SR, GCS R&D, among others

3

COMMUNITY SERVICES

The Community Services committee wants to increase SPE representation in STEM events around Houston.

5

WEB TECHNOLOGY

The Web Technology committee will contract a part-time webmaster to maintain the Section website and communicate with the member base effectively.

4

TECHNOLOGY TRANSFER

We would like to find interesting technology and presenters that will host luncheons or workshops around their technology and the use of it in the energy sector.



Still GROWING...
and revolutionizing Downhole Video Diagnostic services

See what others can only imagine! Experience reality with our patented LiteSabre® diffused lighting and up to 1000 lumens in an OptiGel™ clear window strategically displaced to the problem area downhole.

- E-line Down and Side View Video Surveillance
- 16 Hours of Slickline or CT-Deployed Memory Video
- 30 frames P/S, High-Definition Color Video Recording
- Shallow Work Video

Bringing new technology to the challenges of downhole image capture.



Abrado Wellbore Services

www.abrado-intl.com
Email us at: info@abrado-intl.com

MULTI-STAGE COMPLETIONS



You can do better than “good enough” when it comes to open hole packers.

Our RockSEAL® H2 dual element, hydraulic packers provide built in redundancy and every job is optimized for fracture control and reliability. Contact us today and let us help you maximize your assets.



DO IT ONCE. DO IT RIGHT.



Packers Plus
www.packersplus.com

SEE THE ENERGY
WITH TGS' DATA INTEGRATION SOLUTION

See and access all of your G&G data with Volant, TGS' geoscience data and application integration solution.

For more information contact TGS at:
Tel: +1 713 860 2100
Email: info@tgs.com



www.tgs.com
© 2012 TGS-NOPEC GEOPHYSICAL COMPANY ASA. ALL RIGHTS RESERVED.



We Make It Work Right The First Time.

Deeper and deeper water. Larger projects. More complex design challenges. More people with highly specialized skills. Fewer people who see the big picture.

GATE's full-service team takes a larger, systems view of the interactions and intricacies of the project as a whole. This enables us to develop solutions that cross many different disciplines and boundaries.

The result: smoother facility startups, higher up-time and reliability, less operating headaches and improved whole-life value for existing developments.

Materials & Corrosion
Subsea Engineering
Offshore Risk Management
Commissioning & Initial Startup
Chemical Systems Engineering
Flow Assurance
Water Injection

www.gateinc.com




INNOVATION IN SECTION OPERATIONS OR SUSTAINABILITY

MEMBERSHIP COMMITTEE

We resurrected membership quarterly networking events to personally welcome transfers, students and new members with booths to highlight study groups within the section, and allow immediate membership and volunteer registration during the hosted event. We recognized active volunteers with framed prints of their featured article from the monthly newsletter (“Connect”) and a SPE T-shirt/gift as appreciation for volunteering. We provided small gifts of appreciation to volunteers recognized by the Reservoir Study Group. Additionally, we prioritized and analyzed membership feedback received from a recent nine-question survey; 1,748 responses were received, and we utilized input to develop programs to increase engagement of membership.

NEWSLETTER

We tried to make the Study Groups stand out more by doing event recaps. Between the August and March issues, our event recap page has grown every month.

STUDENT CHAPTER SPONSORSHIPS

In addition to our normal financial support, we sponsored the Student Paper contest at University of Houston and the International Student Chapter Summit organized by Texas A&M University.

TECHNOLOGY TRANSFER

We initiated efforts to bring in speakers from outside the energy industry to share technology ideas. It is early in the process but has been gaining traction.

TENNIS

We sponsored two engineering students from the University of Houston to participate in the tournament in an effort to encourage more student participation in SPE activities and raise awareness of this event.

YOUNG PROFESSIONALS COMMITTEE Q&A

- DOES YOUR SECTION HAVE A FORMALIZED YOUNG PROFESSIONAL COMMITTEE?
 - Yes. Membership Chair acts as a liaison for the YP Committee and SPE-GCS Board of Directors.
- HOW DOES YOUR YP COMMITTEE ENGAGE WITH YOUR SECTION?
 - The SPE-GCS YP Committee Chair attends the SPE-GCS Board meetings and ensures the board is kept up-to-date on YP initiatives. The YP Committee also organizes joint events with the Section Study Groups and other committees to maintain engagement and collaboration. Community Services work in conjunction with the SPE-GCS YP Community Outreach Chair.
 - The Membership Chair provides guidance on documentation and assists with the elections for the incoming YP board, and attends the monthly YP Board meetings and social events.
- LIST AND DESCRIBE EFFORTS BY THE SECTION TO ENGAGE AND ORGANIZE YOUNG PROFESSIONALS.
 - The YP committee actively works to address the concerns of young professionals. It prepares an annual survey to gauge section YP’s interest and desire for events and topics to assist in its planning purposes. It uses these results to coordinate specific YP “Lunch and Learns”, distinguished lectures, technical discussions and networking events for young professionals.
 - “Movie Night” is a joint event hosted by HSSE-SR Study Group and YPs.
 - Business Development Study Group and YP hosted a networking event with the focused objective to initiate mentorship/mentee program.



**When time is money,
Wellsite Geoscience is
money well spent.**

Whether you're exploring a basin, producing a well or completing a shale play, time is money. That's why Weatherford Laboratories brings a suite of formation evaluation technologies right to the wellsite. Utilizing mud gas and cuttings, these technologies provide detailed data on gas composition, organic richness, mineralogy and chemostratigraphy in near real time. As a result, operators now have an invaluable tool to assist with sweet spot identification, wellbore positioning, completion design and hydraulic fracturing. We call it Science At the Wellsite. You'll call it money well spent.

SCIENCE AT THE WELLSITE™
www.weatherfordlabs.com

Formation Evaluation | Well Construction | Completion | Production



©2013 Weatherford. All rights reserved.

DEDICATED TO DELIVERING
STRATEGIC VALUE FOR
OUR CLIENTS.



We are an independent, multi-disciplined
technical consultancy servicing the international
oil and gas industry.

- OPERATIONS ASSURANCE
- SUBSEA PRODUCTION REALIZATION
- FLOW ASSURANCE
- SEPARATION SYSTEMS
- GAS TREATMENT & TRANSPORT
- PRODUCED WATER MANAGEMENT
- SAND & SOLIDS MANAGEMENT
- CONTAMINANTS MANAGEMENT
- CHEMICAL MANAGEMENT
- PROCESS/PRODUCTION OPTIMIZATION
- PROCESS TROUBLESHOOTING
- OPERATIONS PERFORMANCE STRATEGY (OPS)
- SYSTEMS AWARENESS TECHNICAL TRAINING

MAXIMIZING PERFORMANCE THROUGH OPERATIONAL EXCELLENCE

contact@maxoilsolutions.com • www.maxoilsolutions.com

KRYPTOSPHERE™

**More space
to flow™**

KRYPTOSPHERE ultra-conductive, ultra-high strength proppant technology

KRYPTOSPHERE provides twice the baseline conductivity of high-strength proppants at 20,000 psi closure stress. Precision-engineered, mono-sized proppant spheres with exceptional strength, durability and smoothness create more space to flow within your fractures. By maintaining increased conductivity for the life of your deepwater well **KRYPTOSPHERE** delivers higher production, increased EUR and greater ROI.

carboceramics.com/kryptosphere



Production. Enhanced.

STUDENT ACTIVITY

Q&A

• DO YOU INVITE STUDENT MEMBERS OR STUDENTS FROM YOUR STUDENT CHAPTER(S) TO ATTEND SECTION EVENTS?

- Yes. We offer them a student discount price of \$10, compared to \$35 to \$50 for members and non-members. We had a number of HCC Student Chapter members attend several of our PetroTech Study Group meetings.

• DESCRIBE WAYS IN WHICH YOUR SECTION MEMBERS ARE INVOLVED WITH YOUR STUDENT CHAPTERS AND/OR STUDENT MEMBERS.

- Through joint networking events and participation on local student chapter events like the annual SPE Student Summit, attending Student Chapter meetings, activities and Regional SPE Paper Contest hosted by UH. We encourage volunteerism at STEM events.
- Our Section provides \$3,000 in financial support for each of our four Student Chapters: HCC, U of Houston, Rice U, and Texas A&M. Our Membership Chair serves on the Industry Advisory Board for the HCC Energy Institute (Northwest Campus) and on the Petroleum Engineering Advisory Board for University of Houston. Our Young Professionals helped put together the SPE Student Summit and the PetroBowl competition for SPE Student Chapters at ATCE.
- The Membership Chair liaises with the four student chapters: Texas A&M, U of Houston, Rice U and Houston Community College. We have active dialogue with U of Houston Student Chapter President and Prof. John Lee at UH to discuss how to forge stronger bonds between the new UH PetE program and the Section. Last summer, the UH/Rice chapter successfully split into two separate student chapters with the help of our Vice Chair. The Vice Chair and Membership Chair are both active with the U of Houston and Rice Chapter meetings to help promote the students' involvement in the Gulf Coast Section. Our Vice Chair also organized and continues to support an industry advisory board meeting for the HCC PetroTech program.
- We invite SPE student chapter officers to the YP BOD monthly meetings to expose them to leadership skills and transition for future succession planning.
- Our members volunteer at events, including community service activities such as RT-H (Rebuilding Together Houston), ASME (American Society of Mechanical Engineers) and Halliburton-hosted "Industry Speed Networking" with engineering collegiate students.
- We provide monetary funding and exhibit for the SWE (Society of Women Engineers) Region Conference that supports collegiate female petroleum engineering and other engineering majors.
- Our committee subsidized female engineering students from Brazil attending U of Houston to expand STEM (science, technology, engineering and mathematics) initiatives for female middle/high school students in poverty-level communities in Brazil.
- Our members participate at the Houston Community College (HCC) annual symposium and other industry-related events.

• DESCRIBE WAYS IN WHICH YOUR SECTION ENGAGES STUDENT MEMBERS OUTSIDE OF CHAPTER ACTIVITIES.

- New student chapters - continue to work with Lamar University and Lone Star Community College to start their student chapters.
- Through dedicated events for student interns like the annual Roughneck Camp (RNC) and the Emerging Engineering Conference (EEC) Poster Competition.
- Our section offers students the opportunity to attend our Study Group luncheons for \$10, rather than the SPE member price of \$35 or more.

STUDENT Q&A CONTINUED

- The SPE-GCS offers an internship program to SPE-GCS scholarship winners, whether petroleum engineering students or not, in the petroleum industry each summer. The objective is to foster an understanding of the petroleum industry through on-the-job training. The Internship and Scholarship Chairs contact numerous operating and service companies to provide them with dossiers on this year's scholarship winners in case the companies need summer interns. The program is in progress for the 2014 summer period. Anadarko Petroleum Corp will be providing internship offers to the following nine individuals for the summer of 2014:

RECIPIENT/MAJOR/UNIVERSITY	HIGH SCHOOL	PRE-COLLEGE INTERNSHIP
Andrew Brown - Chemical Engineering U of Texas at Austin	Tomball Memorial	Anadarko
Nicholas Cutaia - Petroleum Engineering Texas A&M U	Conroe	Anadarko
Madison Jackson - Petroleum Engineering Texas A&M U	Westside	Anadarko
Ann Graff - Petroleum Engineering Texas A&M U	The Woodlands	Anadarko
Blake Hayes - Petroleum Engineering Texas A&M U	Cy-Fair	Anadarko
Henry Higginson - Chemical Engineering U of Texas at Austin	The Woodlands	Anadarko
Jeremy Martens - Petroleum Engineering U of Texas at Austin	Cy-Fair	Anadarko
Connor Sauer - Petroleum Engineering Texas A&M U	Cypress Creek	Anadarko
Haley Cole - Petroleum Engineering Colorado School of Mines	Cinco Ranch	Anadarko

The YPs have created a student liaison position to improve communications and facilitate increased interactions with local student chapters. We offer support to various local student groups as needed/requested. In addition, the YP has an annual Roughneck Camp that is a great vehicle to introduce student interns to local young professionals in their industry.

• DESCRIBE WAYS IN WHICH YOUR SECTION MEMBERS ARE EDUCATING PRE-UNIVERSITY STUDENTS ON THE PROFESSION AND THE INDUSTRY.

- The Permian Basin Study Group invited high school students to their 2nd annual professional luncheon event.
- The Reservoir Study Group coordinated an event for high school students.
- The Section funded and hosted a booth for a local STEM community annual event called "Energy Day" which educates Greater Houston Area residents, parents, young children and educators about energy.
- Section members engaged with middle school students, interacting with hands-on projects to expose them to potential engineering careers through making putty and erecting structures using marshmallows and spaghetti.
- The SPE Permian Basin Study Group's Ambassador Lecture Program gives members and non-members the opportunity to interact and educate pre-university students on topics that are directly related to science, engineering and the oil and gas industry. The study group annually holds one SPE luncheon where advanced level high school students are invited and sponsored.

INNOVATION IN MEMBERSHIP BENEFITS

We organized a survey of all section members to gain a better understanding of their interests. We had not done one for several years and we gained a lot of valuable insight. The results will be integrated into our annual budget and long-term planning.

We formed a Membership Subcommittee to host networking events for attendees to meet with study groups and community service leaders that will immediately sign-up volunteers for ongoing volunteer events and allow onsite membership registration/renewal. We continue to update our Volunteering webpage and educational opportunities are listed as they become available. A list of volunteers is sent to Membership Coordinator, Xuan VandeBerg from SPEI, and she places them in the appropriate volunteer positions, both at the Section and International levels.

We completed a YP Salary Survey and shared the summary of results with SPE-GCS members as one more benefit to our members.

We recruited a member who transferred to our Section to start up and champion a new program to link Legion of Honor members with YPs in a mentoring program. The older ones can share valuable experience and stories with the younger ones, who can help the elders with new tech gadgets and social networking. This program is still developing, but we now have a volunteer to lead it. Also, the YP's are incorporating investment seminars and career development lectures to meet the needs of the younger members.

OUTREACH + SHARING WITH OTHER TECHNICAL GROUPS

DESCRIBE RELATIONSHIPS WITH OTHER PROFESSIONAL SOCIETIES (NATIONAL OR INTERNATIONAL) THAT ARE ACTIVE IN PETROLEUM ENGINEERING OR RELATED AREAS.

Ongoing monetary and volunteer support, including joint efforts with affiliated industry and engineering related organizations such as SWE, ASME, AADE and API. This includes joint networking and social events: community outreach programs (Energy Day, GEMS, etc.); mentor/mentee programs; exchanging marketed communications to members through social media and newsletters of upcoming events and volunteer opportunities.

YOUNG PROFESSIONALS

Joint Professional Event with SWE, joint Networking event with SWE, joint Social event with TYP, joint Community Outreach event with YPE, and Joint Community Outreach event with NSBE-HAE. Work closely with SWE – Society of Women Engineers in Houston area.

HOW DOES SPE-GCS SHARE TECHNOLOGY WITH OTHER SECTIONS, THE SOCIETY, AND OTHER INDUSTRY GROUPS?

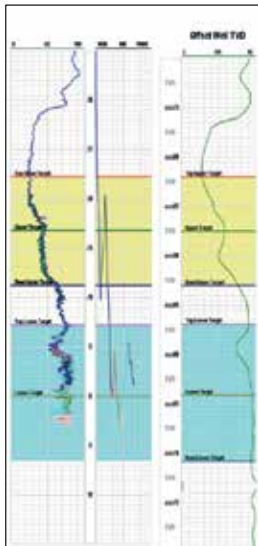
By organizing joint events with SWE, ASME, AADE and API

YOUNG PROFESSIONALS

By sharing our experience in developing and utilizing our SPE-GCS YP Mobile Application

INNOVATION IN SOCIETY AND COMMUNITY BENEFITS

The SPE-GCS YP committee established monthly discussion topics on our social media pages (Facebook, Linked In, Twitter) to encourage discussion on various topics relevant to YPs, including Continuing Education, Early Career Lessons Learned and International Assignments for YPS, etc. The SPE-GCS YP committee used the recently rolled out mobile application to communicate with the YP membership by sending push notifications to their phones to let them know about upcoming events.



Geosteering Services

Highly qualified personnel with 20+ years DD & LWD experience

24/7 Real-time monitoring or reports from LAS files

Proprietary software

Geosteering Software

TST interpretation for GR only measurements

Image displays / interpretation of azimuthal GR, resistivity or density measurements

Resistivity modelling / interpretation for LWD propagation resistivity

Software sales, training and technical support

info@geosteering.com

Call 281 573 0500

Reserves for Unconventional Reservoirs

July 14-15, 2014 | Houston, TX

Are You Handling an Unconventional Reservoir? Learn from the Best!

This course details the methods available to forecast production and estimate reserves in unconventional (shale, hydraulically fractured, low to ultra-low permeability) reservoirs. Learn the strengths and weaknesses of commonly used methods.

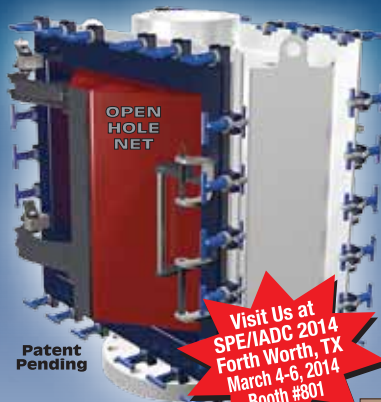
For more information visit:
www.petroleumetc.com
 or contact us via email at:
moreinfo@fracschool.com
 or call 832.833.2569

You drop it in the wellbore, we catch it!

Introducing ...

OPEN HOLE NET™

Protects the wellbore from metal dropped into and coming out of the wellbore!



Patent Pending

- **Installs over any API standard size annular preventer.**
- **Roughnecks rig it up; no operator needed.**
- **No power source needed.**
- **Operates 24/7/365. Never rests.**
- **Complete stainless steel construction.**
- **M.A.D.E.™ (Made, Assembled, Designed, Engineered) in USA.**

Visit Us at SPE/IADC 2014 Forth Worth, TX March 4-6, 2014 Booth #801

5D Oilfield Magnetics™

Premier Magnetic Applications in Drilling Completion and Production Operations
sales@5doilfieldmagnetics.com • 337.466.7400



www.5doilfieldmagnetics.com



Reach for the SUMMIT in ESP solutions

EASTERN AREA 918.392.7820
 SOUTHERN AREA 432.563.7040
 WESTERN AREA 307.764.6346

www.summitesp.com



The Independent Leader in Real-Time Solutions

Solutions for Drilling, Petrophysics, and Geological Analysis

- Real-Time & Unstructured Data Management Services
- Drilling & Data Management Consulting
- Active Drilling Surveillance



www.petrolink.com

Floating Production System Host Selection

Session 1 of the Summer Series on “Floating Production Systems” presents an operator’s view on key drivers for floating production systems concept selection. Technical aspects of the concept selection will be discussed via a demonstration of sizing a wet tree semi-submersible for a deepwater field in the GOM.

Deepwater will require a large portfolio of projects to be developed with floating production systems. While FPSO vessels are expected to dominate the concept selection primarily from lack of pipeline infrastructure, semi-submersibles, spars, and tension leg platforms are often candidates for fields where existing infrastructures are available. Many operators have a large portfolio of floating systems and continuously explore development opportunities that may require floating production systems to develop.

The summer sessions are perfect opportunities for either an introduction to Floating Production Systems for the engineer just starting in the industry, a refresher for the more seasoned individual, or just a great networking opportunity for those involved in this arena. Each session is scheduled as a 1-hour presentation followed by a 30-minute Q&A period.

Dr. Wei Ma

Dr. Wei Ma received his Ph.D. degree in Naval Architecture and Offshore Engineering from University of California at Berkeley in 1995. He started his professional career in the offshore industry at ABS, and then moved to Doris before joining Chevron in 2003. Wei has been working on a wide range of offshore projects and research problems. He was responsible for the Chevron Blind Faith hull and mooring delivery and has been involved in several other projects, including the Jack St. Malo hull concept selection.

Summer Series

SPEAKER

Dr. Wei Ma
Global Responses and
Concept Engineering Technical
Team Leader
Chevron Energy Technology
Company

LOCATION

Wood Group Mustang
Opus Building Events Room
17420 Katy Freeway
Houston, TX 77094

EVENT CONTACT

Gary Lemaire
713-407-7648
garett.lemaire@worleyparsons.com

MEMBERS

\$35

NON-MEMBERS

\$45

STUDENTS

\$15

VIBRATION TECHNOLOGY
LEADING THE INDUSTRY IN STUCK PIPE RECOVERY
INNOVATIVE TECHNOLOGY FOR REMOVING STUCK TUBULARS

+ WORKOVER
+ COMPLETIONS
+ DRILLING



Vibration Technology

www.layne.com

Broaden your expertise.

Petrel is a mark of Schlumberger.
© 2014 Schlumberger. All rights reserved.
10/10/14



NExT oil and gas training and competency development instructs more than 13,000 E&P professionals every year.

With hands-on mentoring and coaching, at a Schlumberger training facility or on the job, NExT training can help you expand your technical expertise.

To view our full list of courses, and to enroll, visit www.NExTtraining.com.

Featured Course

Fluvial and Deltaic Architecture
and Advanced Modeling Using Petrel
September 26–October 3, 2014
Colorado and Utah, USA



Don't send your frac down a river.

Let Geotrace show you how to save **money** and **water** on your frac programs by detecting subtle faults and fracture systems before drilling.



Geotrace
TECHNOLOGIES

www.geotrace.com

rock @glidem | sxc.zu, river @bigat01 | merquef@com, ozofes @Wendy Kaveney | Dreamstime.com

PREMIUM CONNECTIONS

Meeting your exacting requirements.

SealLock® | WedgeLock®
TKC™ | TS™
connection technology



www.huntingplc.com

© 2013 Hunting

Reaching Deeper

With the largest fleet of deep, high-pressure coiled tubing, coupled with basin-specific expertise

Going Further

To find solutions to our customers' wellsite challenges, safely and efficiently

That's the IPS Advantage



Integrated Production Services

www.ipsadvantage.com



Deepwater Drilling Training

John Shaughnessy – SPE member – presents learnings from 36 years of experience: equipment, procedures, potential problems. Classes -

Deepwater Drilling: 5 days

Accelerated Deepwater Drilling: 2 Days

HTHP Drilling: 3 Days

Basic Drilling: 1 Day

Customized and In-House Classes Available

Class details at shaughnessydrillingtraining.com

Introduction to FPSOs

Session 2 of the Summer Series on “Floating Production Systems” presents an overview of the development of FPSOs as a floating production system option and global distribution of FPSOs. The discussion will cover the drivers for selecting an FPSO, key components of the system, storage volume considerations, cargo offloading and metering, hull shapes, turret overview, mechanical handling and topsides layout considerations. New build versus conversion of an existing hull will be discussed. FLNG will be briefly discussed as well.

Bill Kinney

Mr. Bill Kinney has over 35 years of experience in offshore oil and gas development projects. Bill has been involved with all aspects of oil and gas production from the downhole completions through the production facilities, export pipelines and terminals. Bill has also been involved with construction and installation of fixed platforms and floating systems. His experience includes end of field life projects involving well plug and abandonment and platform removal planning. He has led projects in the Gulf of Mexico, North Sea, S.E. Asia, Alaska, West Africa and South America. Bill has been involved with several significant industry projects including the Kakap Field Development (first FPSO in Indonesia), Troika (long distance oil tie back), and Canyon Express (record water depth gas development).

Bill earned his Bachelor of Science degree in Ocean Engineering from Texas A&M University. Bill continues to be involved with the university as a Member of the Civil Engineering Advisory Committee at Texas A&M University and is the Chairman of the Ocean Engineering Advisory Board at Texas A&M University. Bill also occasionally presents lectures at Texas A&M.

Bill is the past chairman of the Projects, Facilities and Construction Study Group for the Society of Petroleum Engineers (SPE) Gulf Coast Section. Bill is also a member of the Society of Naval Architects and Marine Engineers (SNAME) and the Marine Technology Society (MTS).

Bill has been recognized as a Distinguished Graduate by the Zachry Department of Civil Engineering at Texas A&M University. He is also recognized as a Diplomat of Ocean Engineering by the ASCE - Academy of Coastal, Ocean, Ports and Navigation Engineers (ACOPNE).



Summer Series

SPEAKER

*William (Bill) Kinney
Vice President - Floating Systems,
Drilling & Wells
Wood Group Kenny*

LOCATION

*Wood Group Mustang
Opus Building Events Room
17420 Katy Freeway
Houston, TX 77094*

EVENT CONTACT

*Gary Lemaire
713-407-7648
garett.lemaire@worleyparsons.com*

MEMBERS

\$35

NON-MEMBERS

\$45

STUDENTS

\$15

PHDWIN™

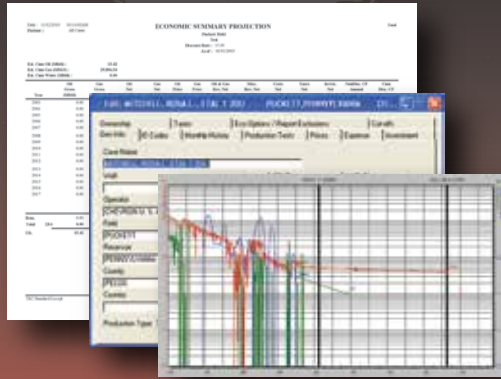
Integrated Economics & Decline Curve Analysis

NOW EVEN MORE POWERFUL WITH

PHDRMS™

Reserves Management System

The *complete solution* for evaluating, managing, and reporting reserves and performance data.



Schedule an **online** presentation
TODAY!

TRC Consultants, LC 888-248-8062 www.phdwin.com

CORROSION-RESISTANT COMPOSITE PIPELINE SOLUTIONS



Flexpipe Systems' composite linepipe products are flexible, reliable and customizable. We are the answer to your next pipeline project.



flexpipesystems.com

Slider

Automated Directional Drilling

IMPROVE YOUR HORIZONTALS



- ON-BOTTOM TOOL FACE ORIENTATION
- INCREASED MOTOR LIFE
- INCREASED ROP & HORIZONTAL REACH CAPABILITY
- ELIMINATES ORIENTATION TIME LOSSES

slb.com/Slider

ELY

Global
Hydraulic
Fracturing
Expertise

281-530-4010
www.elyfrac.com

Design and Construction of Tension Leg Platforms

Session 3 of the Summer Series on “Floating Production Systems” presents an overview of TLP production systems, what drives their design, and a bit of TLP History.

The design of an offshore production platform requires consideration of many factors which influence the design, including payload and performance requirements, the met-ocean and geotechnical environments, construction methodology and available facilities, installation methodology and available equipment, and schedule requirements. Steve will review the typical drivers in a TLP design, and discuss various design solutions. Steve has collected photos of most of the existing TLP platforms, and uses these to demonstrate the evolution of TLP designs over the 26 installed platforms.

Steve Leverette

Steve Leverette has over 37 years of experience in the offshore oil & gas industry. He has been involved in many deepwater developments and specifically Tension Leg Platforms (TLPs), and in fact, was on the design team for the world’s first TLP, the first Gulf of Mexico TLP, the first mini-TLP, and the world’s first DeepDraft Semi. Steve was in charge of the global sizing and analysis of the Hutton TLP project beginning in 1979, and has contributed significantly to the majority of the installed TLP designs since then. He has had a major role in establishing the design codes used in TLP design through chairmanship of the API RP2T workgroup. Steve’s career path has included 8 years with Gulf Oil Company, 10 years as head of a small deepwater engineering consulting firm, and 19 years with SBM Offshore. Steve’s current position includes leading a group of Technology Champions who are mentoring the next generation of offshore designers and providing technical oversight on challenging projects.



Summer Series

SPEAKER

Steve Leverette
Vice President - Technology
SBM Offshore USA

LOCATION

Wood Group Mustang
Opus Building Events Room
17420 Katy Freeway
Houston, TX 77094

EVENT CONTACT

Gary Lemaire
713-407-7648
garett.lemaire@worleyparsons.com

MEMBERS

\$35

NON-MEMBERS

\$45

STUDENTS

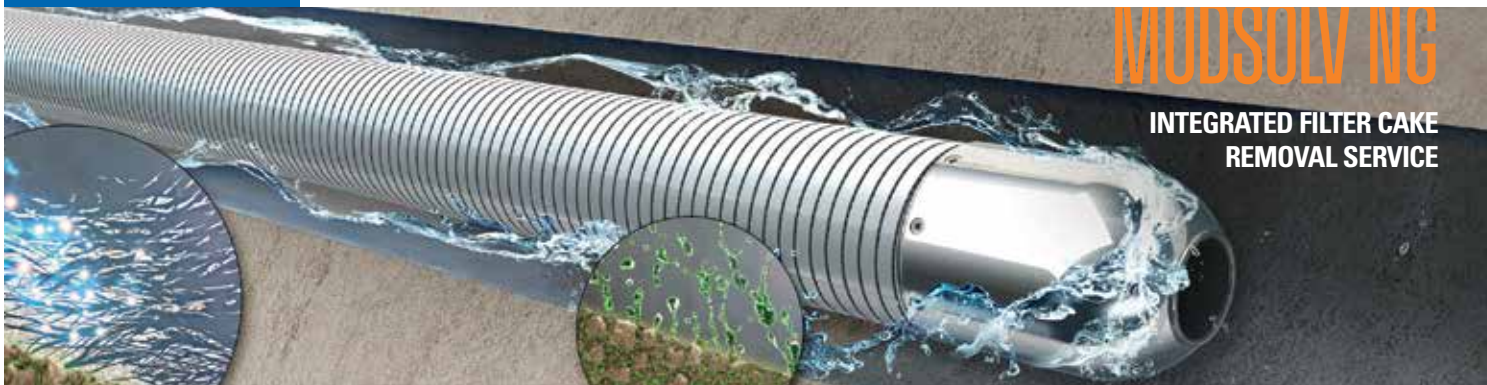
\$15

CEMLab—Cement Lab
Data Management Software

- ◆ Web-based ◆ Test results
- ◆ Slurry design ◆ Search



 Pegasus Vertex, Inc.
(713)981-5558 | sales@pvisoftware.com



Optimize well productivity with uniform filter cake removal



The MUDSOLV NG[†] filter cake removal service enables simultaneous gravel packing or standalone placement for complete filter cake removal to optimize well productivity. The service integrates analytical tools and novel breaker chemistries to deliver the uniform removal of the toughest filter cake and related flow restrictions.

The new generation oil- and water-base breakers within the service are non-corrosive to completion hardware and exhibit an exceptional HSE profile, making them ideally suited for sensitive offshore and onshore environments.

miswaco.com/completions



[†]Mark of M-I L.L.C.

PRODUCTIONEER

**USED BY EVERYONE,
FROM THE FIELD PUMPER
ALL THE WAY UP TO MANAGEMENT**

What our customers are saying:
"Productioneer is a great data repository and analysis tool. Data entered in the field is immediately available to corporate office."

FEATURES

- FIELD DATA CAPTURE
- ALLOCATIONS
- REPORTS & GRAPHS
- CUSTOMIZABLE TEMPLATES
- FULLY MANAGED SERVICE

Mi4 Corporation
Ph: (713) 401-9584
sales@productioneer.com
www.productioneer.com

24/7 SUPPORT HOTLINE (866) 421-6665

The SimpleStart™ toe sleeve

Simply pressure up and test the casing; the toe sleeve opens automatically for initial injection.

ncsfrac.com

© 2013 NCS Energy Services LLC. Multistage Unlimited, SimpleStart, and "Leave nothing behind" are trademarks of NCS Energy Services LLC.

Providing Engineered Solutions

281.955.2900
www.stress.com

STRESS ENGINEERING SERVICES INC.
DESIGN • ANALYSIS • TESTING

WED
July 23

4:30 PM TO 6:00 PM

Summer Series: Introduction to Spars

Session 4 of the Summer Series on “Floating Production Systems” presents the history of Spar development, design, construction method and installation methods. Stability, structure, and response characteristics of Spar design will be discussed. The presentation will conclude with a current summary of spar hulls delivered or under construction.

Jim O’Sullivan

Mr. Jim O’Sullivan has 40 years of experience in the oil & gas industry, covering technology development, engineering, project management, commercial project development and multiple business-related activities. He currently manages the Offshore Technology Services (OTS) Department, which provides advanced technical services to offshore projects and manages company research regarding floating systems. Jim is responsible for Technip’s floating facility products that include developing and launching new technologies, along with supporting established products. He received a BS in Mechanical Engineering from North Carolina State University, a Masters in Ocean Engineering from MIT, a Professional Ocean Engineers Degree from MIT and Woods Hole Oceanographic Institution, and an MBA from Rice University’s Jones Graduate School of Business.



Summer Series

SPEAKER

Jim O’Sullivan
Vice President and
Chief Technology Officer
Technip USA

LOCATION

Wood Group Mustang
Opus Building Events Room
17420 Katy Freeway
Houston, TX 77094

EVENT CONTACT

Gary Lemaire
713-407-7648
garett.lemaire@worleyparsons.com

MEMBERS

\$35

NON-MEMBERS

\$45

STUDENTS

\$15



**Reservoir
to Refinery.**
Innovative solutions
for the life of your well.

- Resin Coated Proppants
- Performance Additives
- Production Chemicals

E-mail us at oilfield@momentive.com. **MOMENTIVE**

Semi-Submersibles FPS Design Considerations

Session 5 of the Summer Series on “Floating Production Systems” presents design considerations for semi-submersible floating production systems.

Semisubmersible floating production systems fit a particular field development niche for platforms in moderate to harsh environments, capable of supporting large payloads and capable of being towed out with the topsides in place. This presentation will give an overview of the features of a semi-submersible platform, a review of the important design considerations in setting the hull configuration, and a review of the steps required to develop the design of the moorings, risers, hull structure and marine systems. The presentation will end with a discussion of current trends and new technology in the design of semi-submersibles.

Bill Greiner

Mr. Bill Greiner has more than 30 years of experience as a Naval Architect in mooring and global performance studies for numerous clients. Bill's project experience includes TLPs, semi-submersibles, classic spars, truss spars, FPSOs and a number of new hull concepts. Specific areas of expertise are in model testing and global performance analysis, concept studies, FEED and detailed design projects, design verification and brownfield studies. He has field experience in shipyards and in offshore installation. Bill's experience includes all aspects of naval architectural work including vessel sizing, weight estimation, stability assessment, mooring design, global performance analysis and structural design. Bill graduated from the University of Michigan with a degree in Naval Architecture and Marine Engineering.

Summer Series

SPEAKER

Bill Greiner
Naval Architecture Department
Manager
INTECSEA

LOCATION

Wood Group Mustang
Opus Building Events Room
17420 Katy Freeway
Houston, TX 77094

EVENT CONTACT

Gary Lemaire
713-407-7648
garett.lemaire@worleyparsons.com

MEMBERS

\$35

NON-MEMBERS

\$45

STUDENTS

\$15



**Innovative
Custom-Engineered
Drilling and Completion
Solutions**



A Pearce Industries Company

Liner Hanger Systems
Expandable Systems
Completion Systems
Safety and Kelly Valves
Window Cutting Products
Rental Tools

Serving the Oil and Gas Industry Since 1917

Tel: 713-729-2110 Fax: 713-728-4767 www.tiwttools.com

Directionally challenged?

If your directional drilling program is more challenging than you expected, maybe you need a new directional driller. Maybe you need Ryan Directional Services, Inc.

Ryan has experience in virtually every important oil and gas shale play. We know the potential roadblocks and how to address them before they cost you money. And that takes drilling to a new level of efficiency.

Call Ryan at 281.443.1414 and see how our directional drilling program will change your experience from challenging to rewarding.

www.nabors.com



Why can Weatherford deliver more real time data at the wellsite than any other mudlogging company?

Tim has cabin fever.



Our Global Operations Manager for Surface Logging Systems, Tim, is all smiles these days. That's because he and his team recently designed a new state-of-the-art mudlogging cabin. The spacious interior makes room for more laboratory services at the wellsite. Now exploration companies have access to more data in real time, so they can make better decisions faster. It's one more way Weatherford Mudlogging is committed to Excellence from the Ground Up.

**EXCELLENCE
FROM THE
GROUND UP™**

SURFACE LOGGING SYSTEMS
www.weatherford.com/surfacelogging
mudlogging.services@weatherford.com



Studio
E&P KNOWLEDGE
ENVIRONMENT

Make expertise more productive

Expert knowledge matters most when you are making critical decisions. The Studio® E&P knowledge environment lets experts capture and share knowledge in the context of the reservoir challenge at hand—enabling every team member to make the best possible decisions. Microsoft technologies combine with on-demand access to the information you need—so experts can contribute when you need them most.

Find out more at:
software.slb.com/Studio



®Mark of Schlumberger. © 2014 Schlumberger. 14-1S-0141
Other company, product, and service names are the properties of their respective owners.

PATENTED proNova™ by TDE

DRILLING PERFORMANCE

Drilling Tracking Report

Drilling System	Drilling Rate (ft/hr)	Drilling Cost (\$/ft)	Drilling Time (hr)
System A	100	10	1000
System B	120	12	1200
System C	150	15	1500
System D	180	18	1800
System E	200	20	2000

CREW PERFORMANCE MEASUREMENTS

AUTOMATIC OPERATIONS DETECTION

INVISIBLE LOST TIME DETECTION

281.755.7595
www.pronova-tde.com

Buoyant Tower™

Session 6 of the Summer Series on “Floating Production Systems” presents the similarities and differences between Spars and the Buoyant Tower™ and how each design met the challenges and delivered solutions to the clients.

The Spars have been a deepwater enabling technology in the offshore oil and gas industry. The first drilling and production classic spar, Neptune, was installed in the Gulf of Mexico. The design has evolved from the classic spar, to the truss spar and on to the cell spar, based on the Ed Horton portfolio of intellectual properties.

Today the same group that brought the spar to market has now developed a self-installing shallow water compliant tower spar as a cost-effective, relocatable enabler, which can be favorably compared to a jacket for production and drilling. Named the Buoyant Tower™, the unit is operating today offshore Peru, configured for drilling and production.

Greg Navarre

Mr. Greg Navarre has over 30 years of oil and gas experience. A Marine Engineering and Naval Architecture graduate of the United States Merchant Marine Academy, Greg has extensive experience in the design, engineering, and construction of gravity-based platforms, jackups and floating drilling facilities.

Mr. Navarre is a member of the Society of Petroleum Engineers, the Marine Technology Society, and the American Association of Drilling Engineers. He holds a U.S.C.G. Unlimited Chief Engineer's License and served for 20 years in the US Naval Reserve, attaining the rank of Lt. Cdr.



Summer Series

SPEAKER

Greg Navarre
President
Horton Wilson Deepwater

LOCATION

Wood Group Mustang
Opus Building Events Room
17420 Katy Freeway
Houston, TX 77094

EVENT CONTACT

Gary Lemaire
713-407-7648
garett.lemaire@worleyparsons.com

MEMBERS

\$35

NON-MEMBERS

\$45

STUDENTS

\$15



Measured Solutions from
The Completion Diagnostics Company

Fracture Performance?

With ProTechnics' combined spectral and production imaging services you can directly measure:

- Fracture Effectiveness
- Wellbore Connectivity
- Production Allocation
- Water Production Problems
- Stage Production Contribution
- After-Frac Production Baseline

COMPLETION[™]
PROFILER



ProTechnics
COMPLETION DIAGNOSTICS
a division of Core Laboratories



Learn more at www.corelab.com/protechnics or call us at 713-328-2320

2013 PROFESSIONAL ENGINEERING EXAM RESULTS FOR PETROLEUM ENGINEERING

First Timers 75%
Second+ Timers 53%
National Pass Rate 70% Est

Look next month for Winrock PE Course Results

PE Exam Application Deadline Date: July 1, 2014
Next Petroleum PE Exam Date: October 24, 2014

P: 405-822-6761 | E: bingwines@cox.net
winrockengineeringinc.com



CRITICAL
WELL ENGINEERING
CONSULTING SERVICES

VIKING'S TEAM OF HIGHLY TRAINED
PETROLEUM PROFESSIONALS
LEND THEIR EXPERIENCE TO
CREATIVE WELL DESIGNS.

WE CAN HELP PLAN AND
EXECUTE YOUR TOUGH WELLS.

- PETROLEUM CONSULTING
- (HPHT) WELL DESIGN
- APB ANALYSIS
- PROJECT MANAGEMENT
- FAILURE ANALYSIS
- TRAINING

VISIT OUR WEBSITE: WWW.VIKINGENG.NET
OR CALL: (281) 870-8455 IN HOUSTON



ULTERRA[™]

When Every Run Counts[™]



www.ulterra.com

+1 817 293 7555

Technical Documentation Development and Management Consulting



*Documentation help = more
available engineering time*

Technical Writing

- + Develop content
- + Multiple authors – consistent voice
- + Formatting, grammar & readability
- + Develop / edit graphics

Management Consulting

- + Documentation & project management
- + Procedures, processes & workflow
- + RFPs, RFQs & contract management

- Quick turnaround
- On-demand resource
- Turnkey publication

ZAETRIC[®]

www.zaetric.com



PPI
Technology
Services LLC

Your Total
Project Management
& Well Site Solution

ppitech.net

(713) 464-2200

Integrated Energy Services, Inc.

Robert Barba
Petrophysicist

Log Analysis
Completion Optimization

500 N. Capital of TX Hwy
Building 4-150
Austin, TX 78746
C: (713) 823-8602
F: (713) 583-9400
RBarba75@gmail.com

www.integrated-energy-services.com

Roughneck Camp

The Oil and Gas Supply Chain: From the Ground to the Pump

Roughneck Camp (RNC) is an annual one-day conference focused on welcoming students, interns, technical professionals and new members to the oil and gas industry. The conference will include career development sessions, presentations by industry Leaders and a technical & panel discussion. There will also be many networking opportunities throughout the event.

THU
July 17

8:00 AM TO 5:00 PM

TIME	TOPIC	SPEAKER /TITLE
7:00 AM	Check In (Shell Woodcreek, Building B)	
8:00 AM	Opening Remarks	Jeff Rhea, SPE RNC Co-Chair
8:10 AM	On Exploration	Sid Jones, New Ventures Team Lead, Chevron
8:50 AM	On the Development of Oil & Gas Projects	EMDC Speaker, ExxonMobil Development Co.
9:30 AM	On Oil and Gas Production	Bill Henry, VP of Int. Exploration & Production, Shell Oil Co.
10:10 AM	Ice Breakers 1	Hosted by PetroSkills
10:40 AM	On the Transportation of Oil and Gas	Amethyst Cavallaro, Corporate Strategic Development, Williams Co.
11:20 AM	On Liquefied Natural Gas	Chris Caswell, Director of LNG and FLNG, KBR
12:00 PM	Lunch	Provided by Shell and Petroskills
12:40 PM	Open Panel Discussion on a Career in the Oil and Gas Industry	Tray Black, Chief Investment Officer, Source Rock Energy Partners Brady Rodgers, EVP Engineering & Business Dev., GulfSlope Energy Amy Sullivan, Deep Water Project Support Manager, Shell Oil Co. David Nickerson, Deepwater Dev. Portfolio Manager, Shell Oil Co.
1:20 PM	On Refining	Mike Brown, VP Technology, Independence Oilfield Chemicals
2:00 PM	On Petrochemicals	Julio Perez, Fixed Equipment Maintenance Supervisor, Exxon Mobil Chemical Co.
2:40 PM	Ice Breakers 2	Hosted by PetroSkills
3:10 PM	On the Marketing of Petroleum Products	Michael Andrew, US Marketing, Phillips66
3:50 PM	Gas and Power Marketing	Mark Phan, Strategic Planning Advisor, ExxonMobil GAPM
4:30 PM	Closing Remarks	Glenn Harris, SPE RNC Co-Chair
5:30 PM	Social	Luke's Ice House on Washington Ave.

LOCATION
Shell Woodcreek Facility
200 N Dairy Ashford Rd.
Houston, TX 77079

RNC CO-CHAIRS
Glenn Harris
832-458-9801
Gharris@independenceoc.com

Jeffrey Rhea
580-512-3312
Jeffrey.t.rhea@exxonmobil.com

MEMBERS
\$50 before July 30, \$60 after

NON-MEMBERS
\$60 before July 30, \$70 after

REGISTRATION
[www.spegcs.org/
roughneck-camp/](http://www.spegcs.org/roughneck-camp/)

POST-RNC NETWORKING EVENT
5:30-7:30pm

LOCATION
Luke's Ice House

MEMBERS
Brittany Niles, Vivek Ghosh
281-782-8194, 832-794-6579
Brittany.Niles@Shell.com
Vivek.Ghosh@Shell.com

Thank you to Our RNC Sponsors:



PetroSkills®

RIGZONE®

ExxonMobil



Expect More

More **SYSTEMS**
More **SERVICES**
More **LOCATIONS**



Pump jacks with legendary quality and reliability have been the reputation of Lufkin for more than 100 years. In that same tradition, Lufkin now offers more artificial lift systems, more support services and more locations to serve operators around the world. These highly engineered solutions, supported by our experienced staff, deliver optimum production from your oil and gas wells.

Now, more systems and services to meet your requirements:

- **Automation**
- **Beam Pumping Units**
- **Hydraulic Pumping Units**
- **Reciprocating Pumps**
- **Progressing Cavity Pumps**
- **Production Optimization**
- **Well Monitoring**
- **Secure Scada**
- **Plunger Lift**
- **Gas Lift**
- **Completion Products**
- **Maintenance & Repair**
- **Training**

The Energy Flows Through Us®
 LUFKIN.COM

www.intertek.com



Upstream Services

6700 Portwest Drive | Houston, TX 77024
 713.479.8400
 westportservices@intertek.com

Delivering Testing Results in Every Phase

Production Testing Services

- Well Testing
- Well Cleanup
- Frac Flow Back
- Drillstem Testing
- Subsea Test Trees
- Extended Well Tests
- Early Production Facilities



© TETRA and the TETRA logo are registered trademarks of TETRA Technologies, Inc. All rights reserved.

tetrathec.com

EVENT RECAP

2014 Annual Awards Banquet



ARE YOU FEELING THE EFFECTS OF THE **Great Crew Change?**

Replenish your company men with competent personnel...

Signa's Wellsite Foreman Intern Training (WFIT) program does all the groundwork to provide operators with qualified company men. We screen, select and train optimal candidates, evaluating each of them throughout to ensure they're tailor-made for your company.

- Drilling or Completion
- Establish core skillsets
- Instill good habits
- Get quicker results
- Monitor progress



The WFIT program is a comprehensive 8-mo. training class utilized by large and small operators (As featured in *Offshore* magazine).

Signa Engineering Corp.
Houston, TX USA
www.signaengineering.com

Contact: Dave Roseland
281.774.1026
droseland@signa.net

WANT TO REACH OVER 16,000 SPE MEMBERS IN THE GREATER HOUSTON AREA?

Advertise your business in the SPE-GCS Newsletter

Connect is printed 12 times per year and contains premium positions for advertisers wanting to reach some of the most influential oil & gas professionals in the world. We are now selling ads for the 2014 -2015 program year, and our ad sizes have been updated. Please visit the SPEGCS website for more information regarding ad pricing and specifications.

IF YOU WOULD LIKE TO PLACE AN AD IN THE SPE-GCS NEWSLETTER OR WEBSITE PLEASE CONTACT:

Pat Stone, Star-Lite Printing, Inc
281-530-9711
starlite1@sbcglobal.net

RPS Knowledge Reservoir

Consulting
Technical Projects
Resourcing
Unconventional
Conventional
Deepwater
Production Solutions
Knowledge
Management

knowledge-reservoir.com

Rose & Associates

Courses Consulting Software
Improving E & P Effectiveness

Unconventional Resource Valuation Course (3 to 5 days)

UCRA Software
To model, value and risk drilling in resource plays

lisaward@roseassoc.com



Dyna-Drill

Manufacturers of Drilling Motor Components

- Mud Motor Power Sections (Sizes: 2 7/8" to 11 1/2")
- Matrix-3® Coated Bearings
- Coil Tubing Power Sections (Sizes: 1 11/16" to 3 3/4")
- Precision Machining

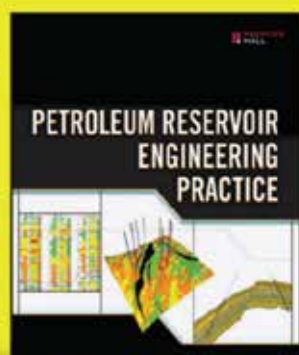
www.dyna-drill.com

Power That Lasts™

The Up-To-Date, Practical Guide to Modern Petroleum Reservoir Engineering by

DR. NNAEMEKA EZEKWE

Available from Amazon.com, informIT.com, and other fine resellers.



PRENTICE HALL

informIT.com



EVENT RECAP

We want to thank the Reservoir Study Group and the Annual Awards Committee for submitting their photos. If you would like your group to be recognized in the Connect with your wonderful photos, please send them in by the 25th of every month to the Connect editor at editor@spgcs.org.



SPE GULF COAST SECTION DIRECTORY

Your guide to your organization leaders

Officers

CHAIR

Mike Strathman, The Trinity Group, Inc.
713-614-6227
mike-strathman@att.net

VICE-CHAIR

Jeanne Perdue, Occidental Oil and Gas
713-215-7348
jeanne_perdue@oxy.com

SECRETARY

David Flores, Consultant
281-381-5828
david_p_flores@yahoo.com

TREASURER

Robert Bruant, Jr.,
Pioneer Natural Resources Company
972-969-4573
robert.bruant@pxd.com

VICE TREASURER

Lucy King, Miller and Lents, Ltd.
713-308-0343
lking@millerandlents.com

CAREER MANAGEMENT

Patty Davis, PetroSkills
832-426-1203
Patty.Davis@petroskills.com

COMMUNICATIONS

Valerie Walker, Anadarko
832-636-3196
Valerie.walker@anadarko.com

COMMUNITY SERVICES

Amy Timmons, Weatherford
713-836-6563
amy.timmons@weatherford.com

EDUCATION

Gabrielle Guerre, Ryder Scott
713-750-5491
gabrielle_guerre@ryderscott.com

MEMBERSHIP

Xuan (Sun) VandeBerg, Consultant
832-444-5143
stem.fields@gmail.com

PAST CHAIR

Steve Baumgartner, Marathon Oil Corp.
713-296-3190
sbaumgartner@marathonoil.com

PROGRAMS

David Tumino, Murphy Oil Corp.
281-717-5123
tuminospe@hal-pc.org

SOCIAL ACTIVITIES

Jim Sheridan, Baker Hughes
281-432-9209
jim.sheridan@bakerhughes.com

TECHNOLOGY TRANSFER

Carol Piovesan, APO Offshore
281-282-9291
cpiovesan@apooffshore.com

YOUNG PROFESSIONALS

Simeon Eburu, Chevron
simeon.eburu@chevron.com
806-544-0829

DIRECTOR 2012-14

Alex McCoy, Occidental Oil and Gas
713-366-5653
alexander_mccoy@oxy.com

Kevin Renfro, Anadarko

832-636-8613
kevin.renfro@anadarko.com

Wolfgang Deeg, Shell

281-544-8279
wjdeeg@spemail.org

DIRECTOR 2013-15

Trey Shaffer, ERM
281-600-1016
Trey.Shaffer@erm.com

John Lee, UH

713-743-4877
wjlee3@uh.edu

Deepak Gala, Shell

281-544-2181
deepak.gala@shell.com

SPE GULF COAST NORTH AMERICA REGIONAL DIRECTOR

Bryant Muller, Halliburton
281-818-5522
Bryant.Mueller@halliburton.com

Committee Chairs

AWARDS

James Rodgerson, BP
281-221-4085
james.rodgerson@bp.com

CONTINUING EDUCATION

Nii Ahele Nunoo, NOV
507-304 5416
Nii.Nunoo@nov.com

ESP WORKSHOP

Noel Putscher, Newfield
281-674-2871
nputscher@newfield.com

GOLF

Cameron Conway, KB Machine
281-217-0660
cconway@kb-machine.com

INTERNSHIPS

Gabrielle Guerre, Ryder Scott
713-750-5491
gabrielle_guerre@ryderscott.com

NEWSLETTER

John Jackson, Unimin Energy
832-247-0233
editor@spgcs.org

SCHOLARSHIP

Tanhee Galindo, Consultant
832-693-9010
gcs-scholarship@spemail.org

SPORTING CLAYS

Paul Conover, NOV
713-346-7482
paul.conover@natoil.com

TECHNOLOGY TRANSFER

Carol Piovesan, APO Offshore
949-232-6353
cpiovesan@apooffshore.com

TENNIS

James Jackson, Halliburton
713-366-5704
james.jackson@halliburton.com

WEB TECHNOLOGY

Shivkumar Patil, Aker Solutions
713-369-5352
Shivkumar.Patil@akersolutions.com

SECTION MANAGER

Kathy MacLennan, SPE-GCS
713-779-9595 x 813
kmaclennan@spe.org

Study Group Chairs

BUSINESS DEVELOPMENT

Steve Mullican, Grenadier Energy Partners
281-907-4120
smullican@grenadierenergy.com

COMPLETIONS & PRODUCTION

Mark Chapman, CARBO Ceramics
281-921-6522
mark.chapman@carboceramics.com

DIGITAL ENERGY

Rick Morneau, Morneau Consulting
281-315-9395
rickmorneau@outlook.com

DRILLING

Joe Tison, Greene Tweed
281-784-7805
wtison@gtweed.com

GENERAL MEETING

Raja Chakraborty, Shell
281-544-2148
Raja.Chakraborty@shell.com

HEALTH, SAFETY, SECURITY, ENVIRONMENT AND SOCIAL RESPONSIBILITY

Trey Shaffer, ERM
281-600-1016
trey.shaffer@erm.com

INTERNATIONAL

Owen Jones, ExxonMobil
Development Company
832-624-2019
owen.jones@exxonmobil.com

NORTHSIDE

Naval Goel
650-307-7267
navalgoel@hotmail.com

PERMIAN BASIN

Amy Timmons, Weatherford
713-836-6563
amy.timmons@weatherford.com

PETRO-TECH

Marci Nickerson, Consultant
713-446-3400
mnick52@sbcglobal.net

PROJECTS, FACILITIES, CONSTR.

Chris Shaw, Shell
281-544-6796
C.Shaw@shell.com

RESEARCH & DEVELOPMENT

Skip Davis, Technology Intermediaries
281-359-8556
skdavis@technologyintermediaries.com

RESERVOIR

Sunil Lakshminarayanan, Weatherford
713-849-1861
sunil.lakshminarayanan@weatherford.com

WATER & WASTE MANAGEMENT

Kira Jones, Momenive
281-646-2827
kira.jones@momenive.com

WESTSIDE

Andrea Hersey, Momenive
281-646-2805
andrea.hersey@momenive.com

CONNECT

Information

Newsletter Committee

CHAIRMAN | John Jackson
editor@spegcs.org

AD SALES | Pat Stone
starlite1@sbcglobal.net

BOARD LIAISON | Valerie Walker

NEWSLETTER DESIGN | DesignGood
designgood.com
designgoodstudio.com

SPE Houston Office

GULF COAST SECTION MANAGER

Kathy MacLennan | kmaclellan@spe.org

GCS ADMINISTRATIVE ASSISTANT

Sharon Harris | sharris@spe.org

HOURS & LOCATION

10777 Westheimer Road, Suite 1075

Houston, Texas 77042

P 713-779-9595

F 713-779-4216

Monday - Friday 8:30 a.m. to 5:00 p.m.

Photo Submissions

We are looking for member photos to feature on the cover of upcoming issues! Photos must be at least 9" by 12" at 300 DPI. Email your high resolution picture submissions to:
editor@spegcs.org

Change of Address

To report a change of address contact:

Society of Petroleum Engineers

Member Services Dept.

P.O. Box 833836

Richardson, Texas 75083-3836

1.800.456.6863

service@spe.org

Contact

For comments, contributions, or delivery problems, contact editor@spegcs.org.



DIRECTIONAL
AND
HORIZONTAL
DRILLING
SPECIALISTS

WWW.NOVADIRECTIONAL.COM

ULTIMATE EOR

The Ultimate Source for Enhanced Oil Recovery

Chemical EOR for the 21st Century

- Solid theoretical foundation built at UT Austin
- Robust chemical formulations, for any salinity and hardness
- Very low chemical retention
- Efficient chemicals at lower concentrations
- UTCHEM – leader in simulation
- Commercially Independent
- Integrated support from lab to field throughout project life
- Patented, proprietary chemical systems

ACCEPTING PROJECTS AT OUR NEW FACILITY IN AUSTIN.
 Contact Charles Christopher at Charles@ultimateeor.com or 713.502.3008 and let us engineer a successful project for you.



NON-PROFIT ORGANIZATION
 U.S. POSTAGE PAID
 PERMIT NO. 6476
 HOUSTON, TX

SOCIETY OF PETROLEUM ENGINEERS
 GULF COAST SECTION

10777 Westheimer Road
 Suite 1075
 Houston, TX 77042

CALENDAR

July 2014

Sunday	Monday	Tuesday	Wednesday	Thursday	Friday	Saturday
			Projects Facilities & Construction - Session 1 1	2	3	4 5
6	7	8	Projects Facilities & Construction - Session 2	Board Of Directors 9	10	11 12
13	14	15	Projects Facilities & Construction - Session 3	Young Professionals Roughneck Camp Post-RNC Networking Event 16	17	18 19
20	21	22	Projects Facilities & Construction - Session 4		24	25 26
27	28	29	Projects Facilities & Construction - Session 5	30	31	